

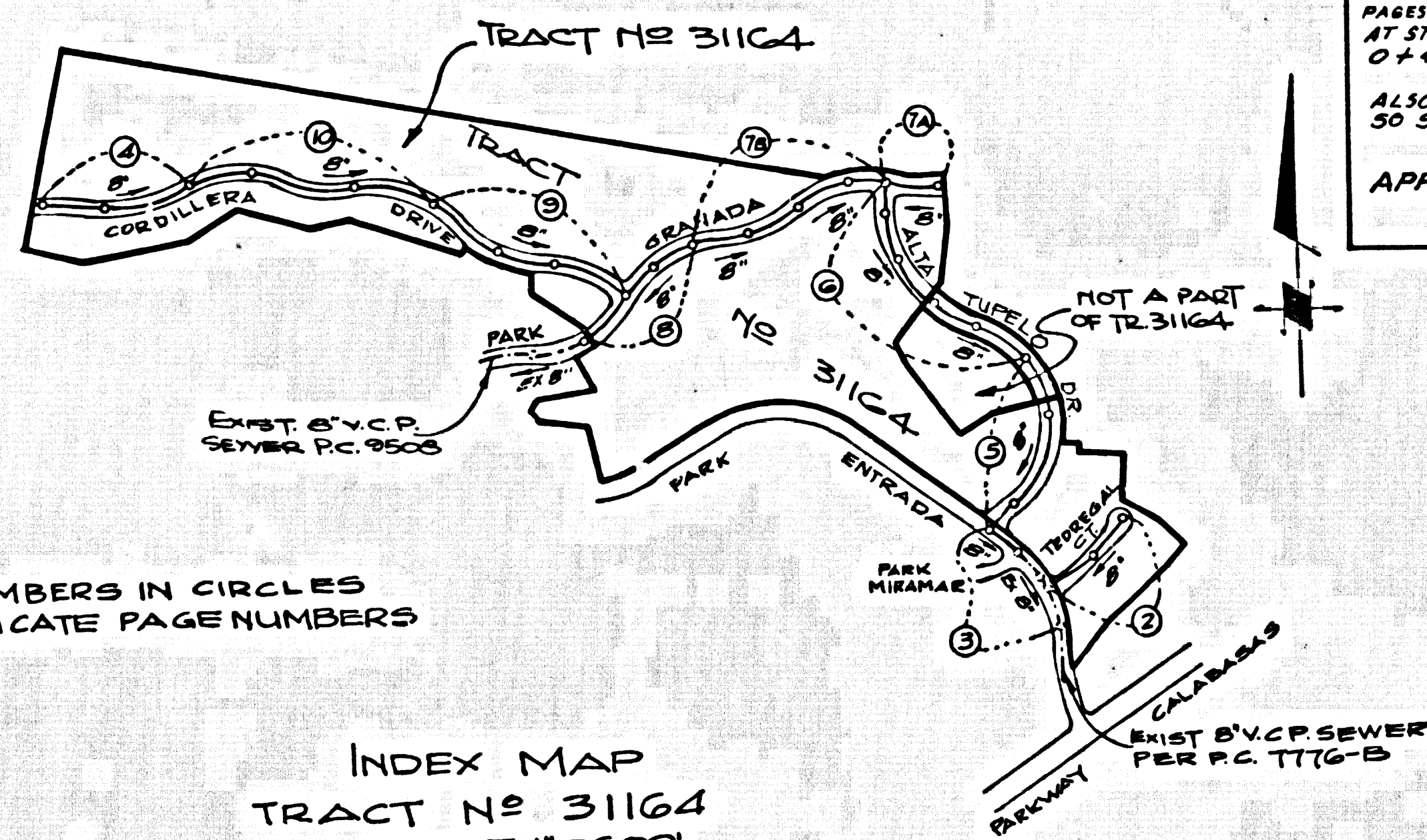
B.M. BY 7540A ELEV. 1135.571
 RD. ON TAG 3 END BRIDGE 531621
 OVER VENTURA FRWY @ NE COR
 CALABASAS RD + MUREAU RD 100FT
 N + 21 FT W. INT.
 MALIBU QUAD. 19 12

PRIVATE ENGINEERS NOTICE TO CONTRACTORS

The existence and location of any underground utility pipes or structures shown on these plans are obtained by search of the available records. To the best of our knowledge there are no existing utilities except as shown on these plans. The contractor is required to take due precautionary measures to protect the utility lines shown and any other lines not of record or not shown on these plans.

J. J. Lawrence
 Registered Engineer R.C.E.

REVISION NO. 1 DATE 8/22/79
 PAGE 5 & 6 TUPALO DR - ADDED 3 H.L.'S INSTEAD OF JUST WYES AT STATIONS 5+43 & 7+09 ON ELY. SIDE OF STREET OF PAGE 5 AND AT STATION 6+47 ON THE N. ELY. SIDE OF STREET OF PAGE 6.
 PAGE 7 & 8 PARK ENTRADA - ADDED 5 H.L.'S INSTEAD OF JUST WYES AT STATIONS 2+18, 2+82 & 1+55 PAGE 7A AND STATIONS 0+43 & 1+22 PAGE 7B, ALL ON THE N. SIDE OF STREET.
 ALSO ON PAGE 7A, REVISED 2 OF SEWER CURVE DATA SO SEWER E.C. ENDS AT M.H. STATION 2+08.54
 APPROVED *Ralph David Stewart* 8/22/79
 OFFICE OF COUNTY ENGINEER/R.E. NO. 16558



GENERAL NOTES:

- ELEVATIONS ARE IN FEET ABOVE U.S.C. & G.S. SEA LEVEL DATUM OF 1929.
- NO REVISIONS SHALL BE MADE IN THESE PLANS WITHOUT THE APPROVAL OF THE COUNTY ENGINEER.
- NO REPRESENTATIVE OF THE COUNTY ENGINEER WILL SURVEY OR LAY OUT ANY PORTION OF THE WORK.
- GRADES TO WHICH THIS IMPROVEMENT IS TO BE CONSTRUCTED ARE SHOWN ON PLANS AND PROFILES. GRADE POINTS FOR TOP OF CURBS, CENTER LINE OF STREETS, OR CENTER LINE OF ALLEYS ARE SHOWN BY CIRCLES OR POINTS. AT ALL POINTS BETWEEN DESIGNATED WATER POINTS THE GRADE SHALL BE ESTABLISHED SO AS TO COMFORM TO A STRAIGHT LINE DRAWN BETWEEN SAID DESIGNATED POINTS.
- THE PRIVATE ENGINEER SHALL FURNISH THE COUNTY ENGINEER WITH GRADE SHEETS AND STATIONING FOR ALL HOUSE LATERALS AND 12" OR 16" BRANCHES AND SHALL PROVIDE STAGES FOR THEM AT THEIR PROPER LOCATIONS WITH STATIONING PLAINLY MARKED. ALL HOUSE LATERALS SHALL BE CONSTRUCTED IN A STRAIGHT ALIGNMENT AT RIGHT ANGLES FROM THE MAIN LINE EXCEPT AS SHOWN ON THE PLANS. HOUSE LATERALS FROM CHIMNEYS SHALL NOT HAVE AN ANGLE OF LESS THAN 45° WITH THE MAIN LINE SEWER. ANY CHANGE IN ALIGNMENT SHALL BE REQUESTED IN WRITING BY THE PRIVATE ENGINEER.
- THE PRIVATE ENGINEER SHALL FURNISH THE HOUSE LATERAL DEPTH AT THE PROPERTY LINE BELOW THE TOP OF CURB ELEVATION FOR EACH HOUSE LATERAL ON THE GRADE SHEET.
- BEFORE WORK CAN BE STARTED, THE CONTRACTOR MUST OBTAIN A PERMIT TO EXCAVATE IN COUNTY STREETS FROM THE L.A. COUNTY ROAD DEPT., DISTRICT OFFICE NO. 25, AND PAY A FEE TO THE COUNTY ENGINEER. AT THE L.A. COUNTY REGIONAL OFFICE, TO COVER THE COST OF CONSTRUCTION INSPECTION AND RECORD PLANS.
- IF WORK IS TO BE DONE IN A STATE HIGHWAY, A PERMIT MUST BE OBTAINED FROM THE STATE OF CALIFORNIA, DIVISION OF HIGHWAYS, 120 SOUTH SPRING STREET, LOS ANGELES, CALIFORNIA.
- APPROVAL OF THIS PLAN BY THE COUNTY OF LOS ANGELES DOES NOT CONSTITUTE A REPRESENTATION AS TO THE ACCURACY OF THE LOCATION OF OR THE EXISTENCE OR NON-EXISTENCE OF ANY UNDERGROUND UTILITY PIPE, OR STRUCTURE WITHIN THE LIMITS OF THIS PROJECT. THIS NOTE APPLIES TO ALL PAGES.
- REFER TO SECTION 7164.1 OF THE STANDARD SPECIFICATIONS, REGARDING SAFETY SIGNS.
- BEFORE THIS IS SUBMITTED TO THE COUNTY ENGINEER THE CONTRACTOR SHALL OBTAIN A PERMIT TO EXCAVATE FROM THE STATE OF CALIFORNIA DIVISION OF INDUSTRIAL SAFETY.
- THE UNDERGROUND UTILITY COMPANIES WITHIN THE LIMITS OF THIS PROJECT ARE AS FOLLOWS:
 A. SOUTHERN CALIF. GAS
 B. SOUTHERN CALIF. EDISON
 C. PACIFIC TELEPHONE
 D. LAS VEGAS WATER DISTRICT
 E. SHELL OIL CO.

CONSTRUCTION NOTES:

- WORK SHALL BE CONSTRUCTED ACCORDING TO THE STANDARD SPECIFICATIONS FOR PUBLIC WORKS CONSTRUCTION (1976-EDITION) AND COUNTY ENGINEER SPECIAL PROVISIONS FOR THE CONSTRUCTION OF SANITARY SEWERS DATED SEP. 21, 1976 AND SHALL BE PROSECUTED ONLY IN THE PRESENCE OF THE COUNTY ENGINEER.
- THE CONTRACTOR SHALL NOTIFY THE DISTRICT ENGINEER BY TELEPHONE, (213) 674-7425, AT LEAST TWENTY-FOUR HOURS BEFORE STARTING ANY WORK UNDER THIS CONTRACT.
- HOUSE LATERALS TO BE CONSTRUCTED WITH INVERTS AT PROPERTY LINE & FEET BELOW CURB GRADE EXCEPT AS NOTED.
- WYE OR TEE BRANCHES MAY BE USED FOR CONNECTIONS TO MAINLINE SEWERS EXCEPT AS NOTED.
- ALL STRUCTURES SHALL BE EITHER BRICK MANHOLES PER 8-30 OR PRECAST CONCRETE MANHOLES PER 8-30, EXCEPT AS NOTED.
- PROVIDE STAGES ON THE PROPERTY LINE OR PROPERTY LINES PRODUCED AT RIGHT ANGLES TO THE SEWER LINE AT THE CENTER LINE OF EACH MANHOLE.
- MANHOLE TOPS IN UNIMPROVED RIGHTS OF WAY TO BE SIX INCHES ABOVE FINISHED GRADE.
- VITRIFIED CLAY PIPE JOINTS SHALL BE TYPE "B", "T", OR "O" PER STANDARD SPECIFICATIONS SECTION 208-2.
- IF A POWER POLE IS WITHIN THREE FEET OF THE SEWER, THE SEWER SHALL BE ENCASED, PER 8-30, CASE II, TWO FEET ON EACH SIDE FROM THE POINT OF INTERFERENCE.
- IF DURING THE COURSE OF CONSTRUCTION IT IS DETERMINED THAT THERE IS LESS THAN FOUR FEET OF COVER OVER THE TOP OF A MAIN LINE OR HOUSE LATERAL V.C.P. SEWER WHICH IS NOT INDICATED ON THE PLANS, THE PIPE SHALL BE ENCASED PER 8-30, CASE II UNLESS OTHERWISE APPROVED BY THE COUNTY ENGINEER.
- ALL JOINTS BETWEEN CAST IRON PIPE AND VITRIFIED CLAY PIPE SHALL BE MADE WITH A RUBBER GULF JOINT, TYPE "C" OR "B", WITHIN REACHING IF NECESSARY PER STANDARD SPECIFICATIONS, SECTION 208-2.
- SEWERS TO BE INSTALLED UNDER SECTION 208-21.6 OF THE STANDARD SPECIFICATIONS AND SPECIAL PROVISIONS.
- RESURFACE ALL TRENCHES WITHIN PAVED AREAS TO MEET L.A. COUNTY ROAD DEPT. OR CALIFORNIA STATE HIGHWAY REQUIREMENTS IN ACCORDANCE WITH PERMITS.
- FULL COMPLIANCE WITH SECTION 208-21.6 OF THE SPECIAL PROVISIONS WILL BE REQUIRED FOR BACKFILL IN STREETS. CERTIFICATION OF BACKFILL COMPACTION AND SAND EQUIVALENTS BY A CHALLENGED, REGISTERED TESTING LABORATORY SHALL BE PROVIDED BY THE PERMITTEE PRIOR TO THE ISSUANCE OF A CERTIFICATE OF PARTIAL ACCEPTANCE.

TRACT NO. 31164
 PRIVATE CONTRACT NO. 9468

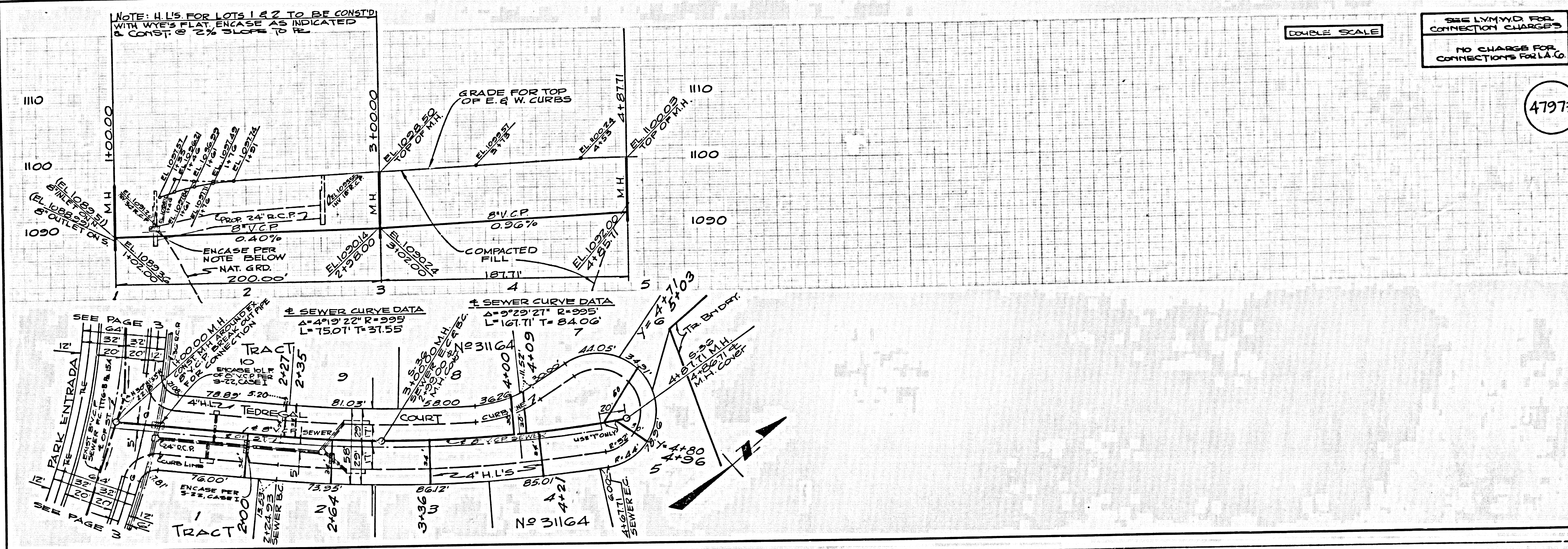
W.S. 60
 5 SHEETS, 10 PAGES
 SCALE: VERT. 1" = 6'
 HORIZ. 1" = 40'
 PREPARED IN THE OFFICES OF
 LIND & HILLERUD, INC.
 2025 HUNTINGTON DRIVE
 SAN MARINO, CALIF. 91088
 BY: *J. J. Lawrence*
 REG. C. E. NO. 12223

47972

THE FOLLOWING LATEST REVISED STANDARD PLANS ON FILE IN THE OFFICE OF THE COUNTY ENGINEER SHALL APPLY IN THE CONSTRUCTION OF THIS PROJECT.

LEGEND	8-1
MINIMUM PUBLIC SAFETY REQUIREMENTS	8-2
BRICK MANHOLE	8-3
STANDARD MANHOLE STE	8-4
SEWING FOR SEWER PIPE	8-5
CRADLING AND ENCASMENT	8-6
WYE OR TEE SUPPORT	8-7
ALLOWABLE TRENCH WIDTH	8-8
LOADING MANHOLE FRAME AND COVER	8-9
NON-REINFORCED PRECAST CONCRETE MANHOLE	8-10
SPECIAL SUPPORT & PROTECTION	8-11
SPECIAL HOUSE LATERALS	8-12

COUNTY OF LOS ANGELES, CALIFORNIA
 STEPHEN J. KOONCE COUNTY ENGINEER LAS VIRGENES MUNICIPAL WATER DISTRICT
 APPROVED *J. J. Lawrence* 8/15/79 APPROVED *H. W. Stokes* DATE: 8/27/79
 DISTRICT ENGINEER DISTRICT GENERAL MANAGER
 CHECKED *James C. Thomas* 8/15/79
 DISTRICT ENGINEER DISTRICT GENERAL MANAGER
 REG. C. E. NO. 13763
 CALABASAS BLDG. DIST. 21 I.N. 02500Z



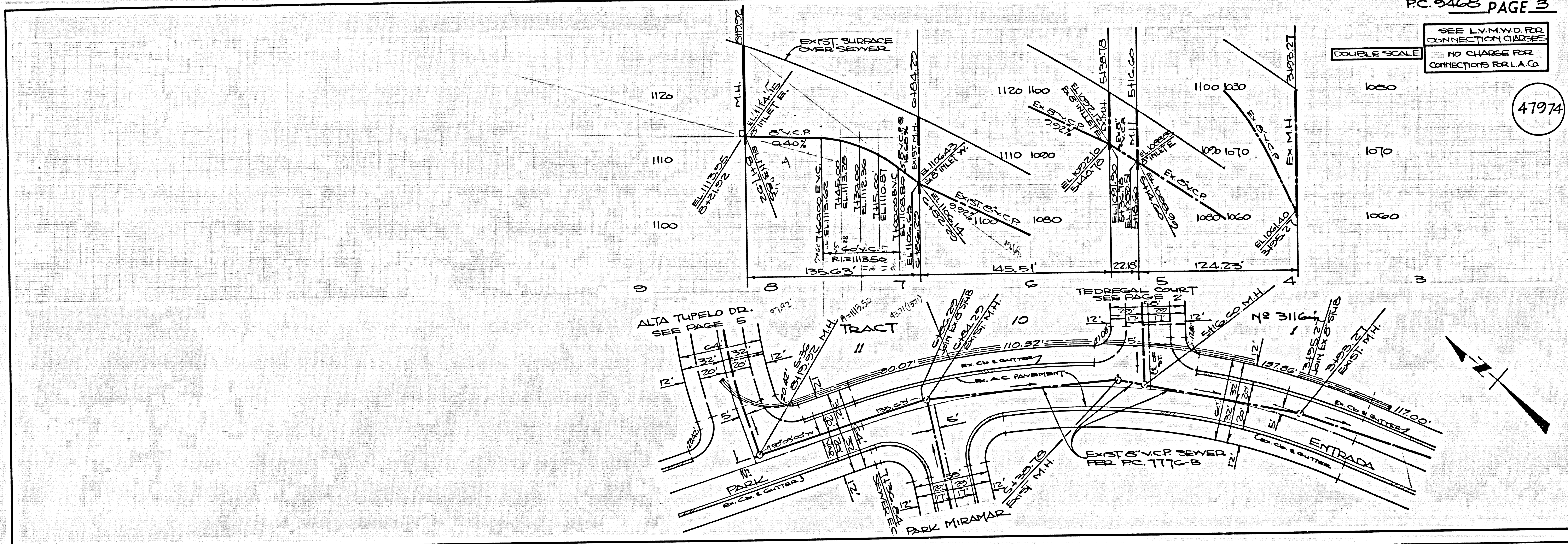
DOUBLE SCALE

SEE LISTING FOR CONNECTION CHARGES
 NO CHARGES FOR CONNECTIONS FOR L.A.C.

47973

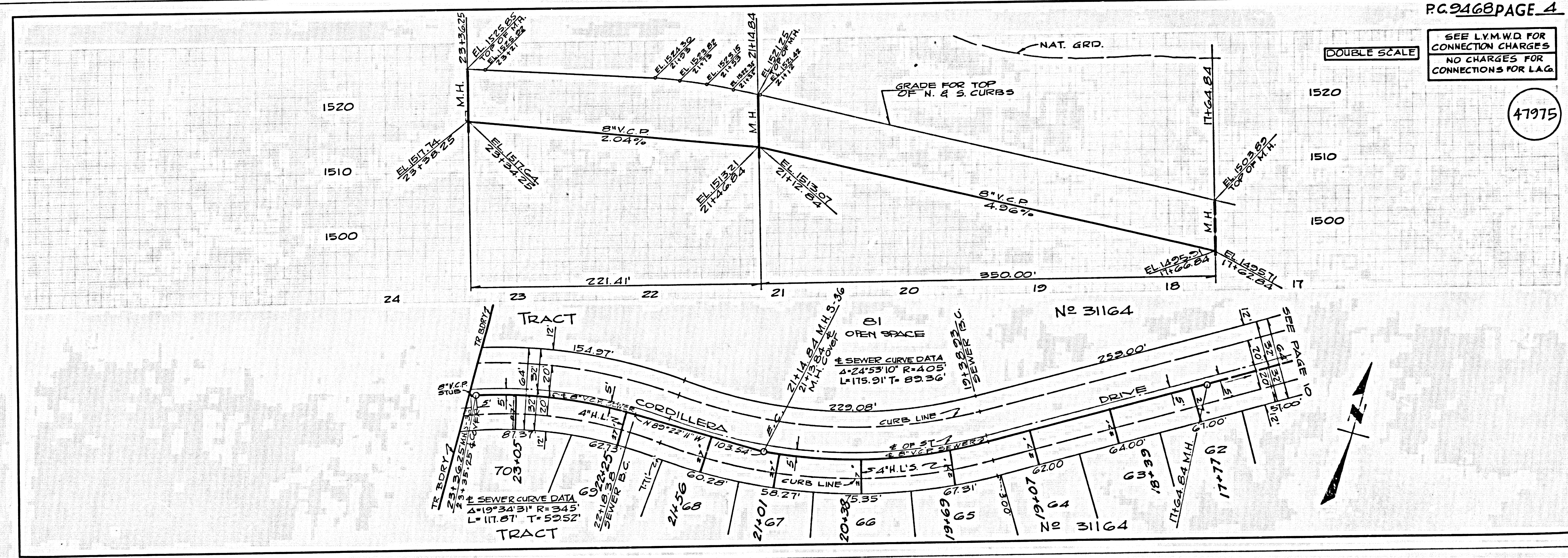
SEE L.V.M.W.D. FOR CONNECTION CHARGES
NO CHARGE FOR CONNECTIONS FOR L.A.G.

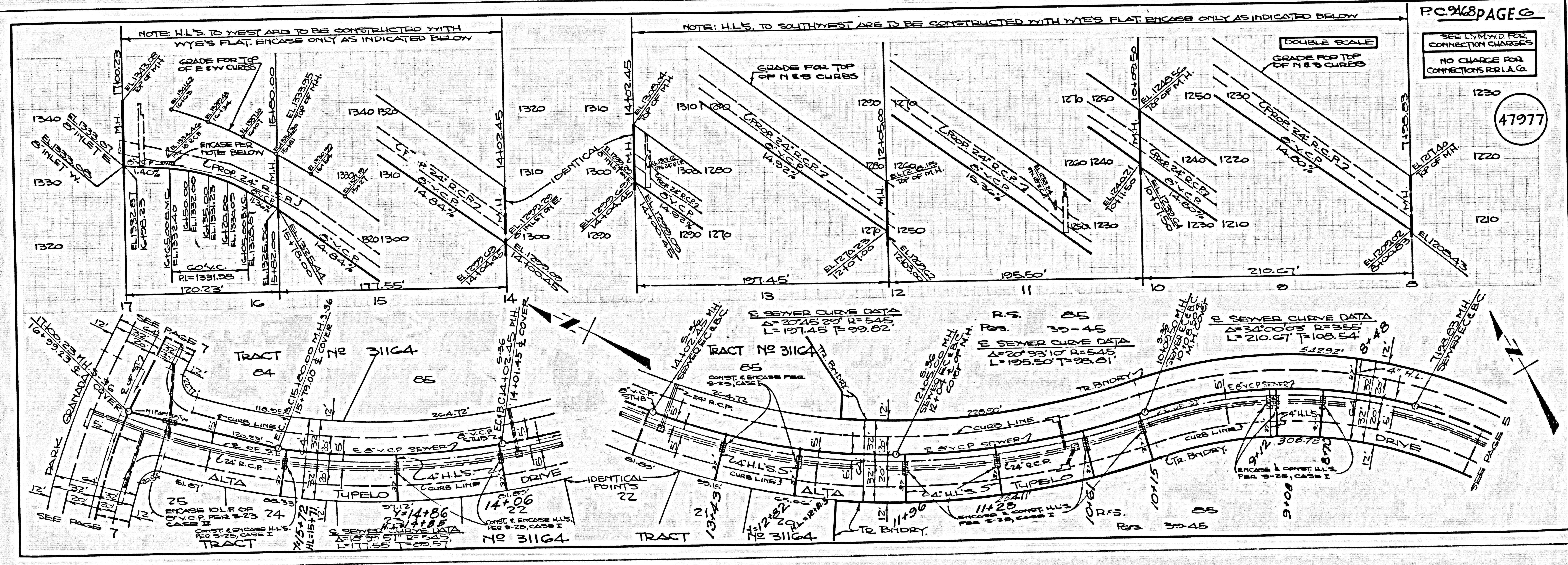
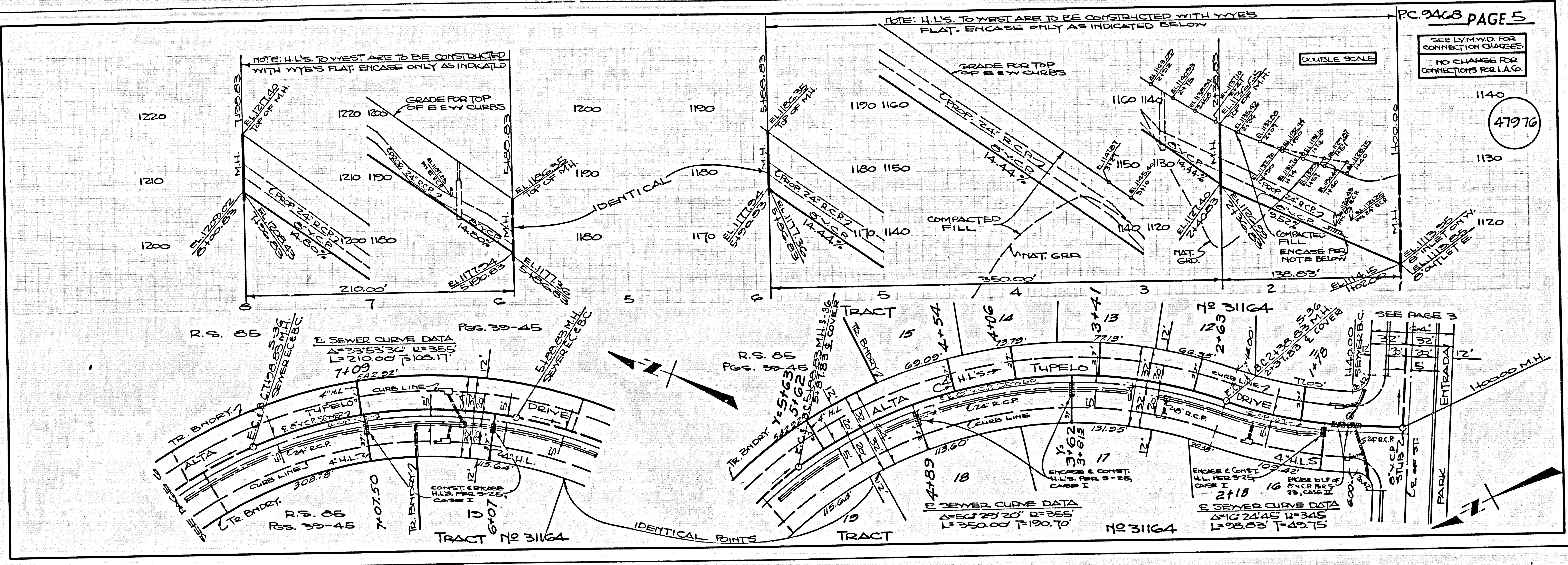
47974

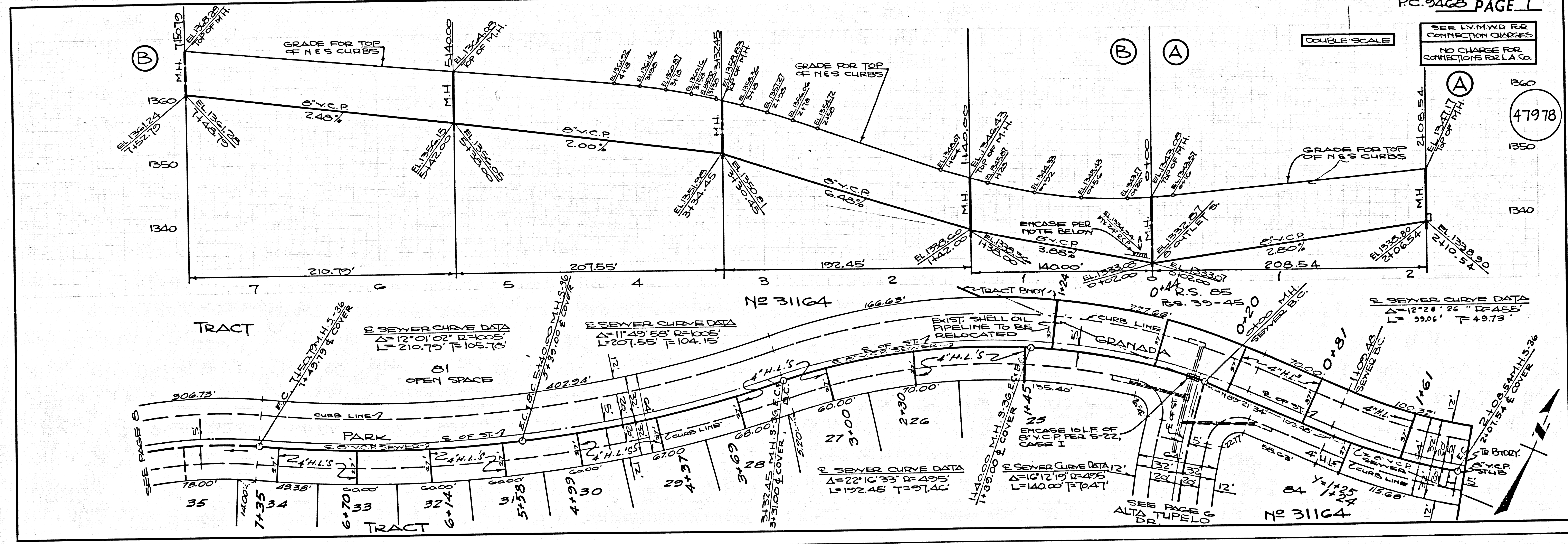


SEE L.V.M.W.D. FOR CONNECTION CHARGES
NO CHARGE FOR CONNECTIONS FOR L.A.G.

47975

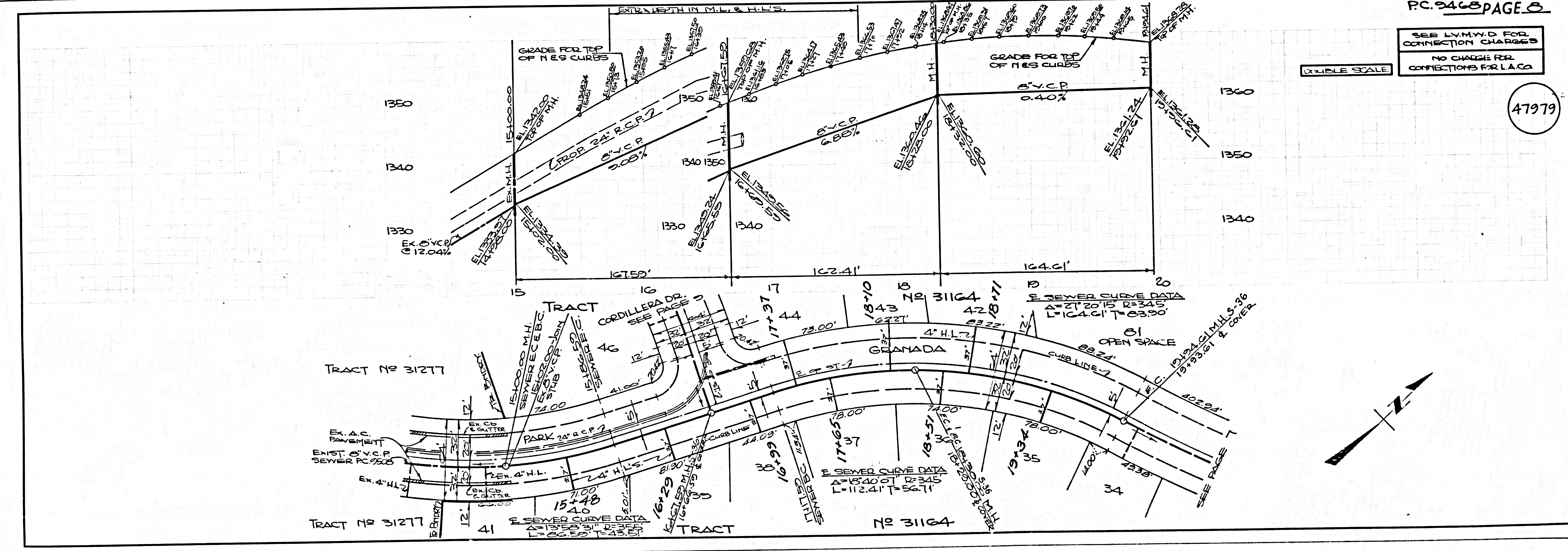






SEE LVMWD FOR CONNECTION CHARGES
NO CHARGE FOR CONNECTIONS FOR L.A. CO.

47978

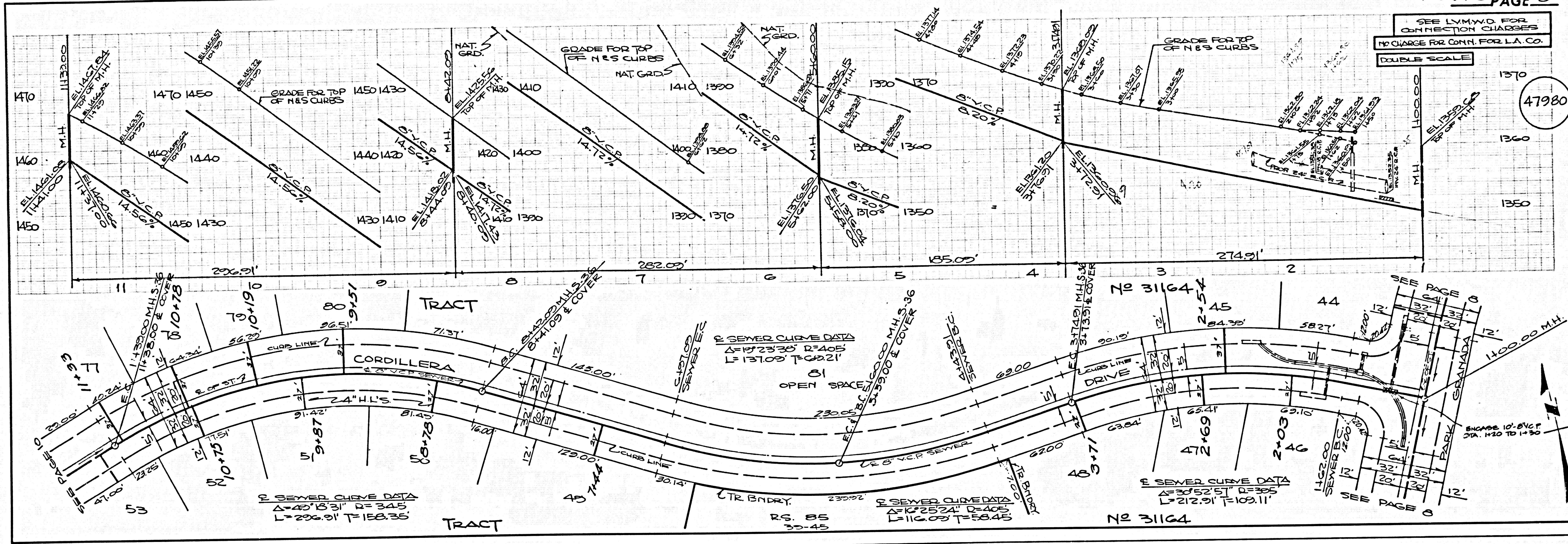


SEE LVMWD FOR CONNECTION CHARGES
NO CHARGE FOR CONNECTIONS FOR L.A. CO.

47979

SEE L.Y.M.W.D. FOR CONNECTION CHARGES
NO CHARGE FOR CONN. FOR L.A. CO.
DOUBLE SCALE

47980



SEE L.Y.M.W.D. FOR CONNECTION CHARGES
NO CHARGE FOR CONNECTIONS FOR L.A. CO.
DOUBLE SCALE

47981

