

PRIVATE CONTRACT NO. 9469

W.S. 24
 1 SHEET 2 PAGES
 SCALE: VERT. 1" = 4'
 HORIZ. 1" = 40'
 PREPARED IN THE OFFICES OF
 MARBLE & ASSOCIATES, INC.
 BY *J.M. Marble*
 REG. C. E. No. 74814

46,260

THE FOLLOWING LATEST REVISED STANDARD PLANS ON FILE IN THE OFFICE OF THE COUNTY ENGINEER SHALL APPLY IN THE CONSTRUCTION OF THIS PROJECT.

LEGEND	5-1
MINIMUM PUBLIC SAFETY REQUIREMENTS	5-1
BRICK MANHOLE	5-3
STANDARD MANHOLE STEP	5-7
REINFORCING FOR SEWER PIPE	5-21
CRACKING AND ENCASEMENT	5-23
WYE OR TEE SUPPORT	5-26
ALLOWABLE TRENCH WIDTHS	5-30
LOCKING MANHOLE FRAME AND COVER	5-33
NON-REINFORCED PRECAST CONCRETE MANHOLE	5-36

COUNTY OF LOS ANGELES, CALIFORNIA
 STEPHEN J. KOONCE, COUNTY ENGINEER
 JOHN D. PARKHURST, CHIEF ENGINEER
 APPROVED *Amos P. D. 1/10/78*
 REGIONAL ENGINEER
 CHECKED *Martin L. Murphy 1-10-78*
 REG. C. E. NO. 18,514
 LEWIS BLDG. DIST. 7 J.N. DEWOLFE

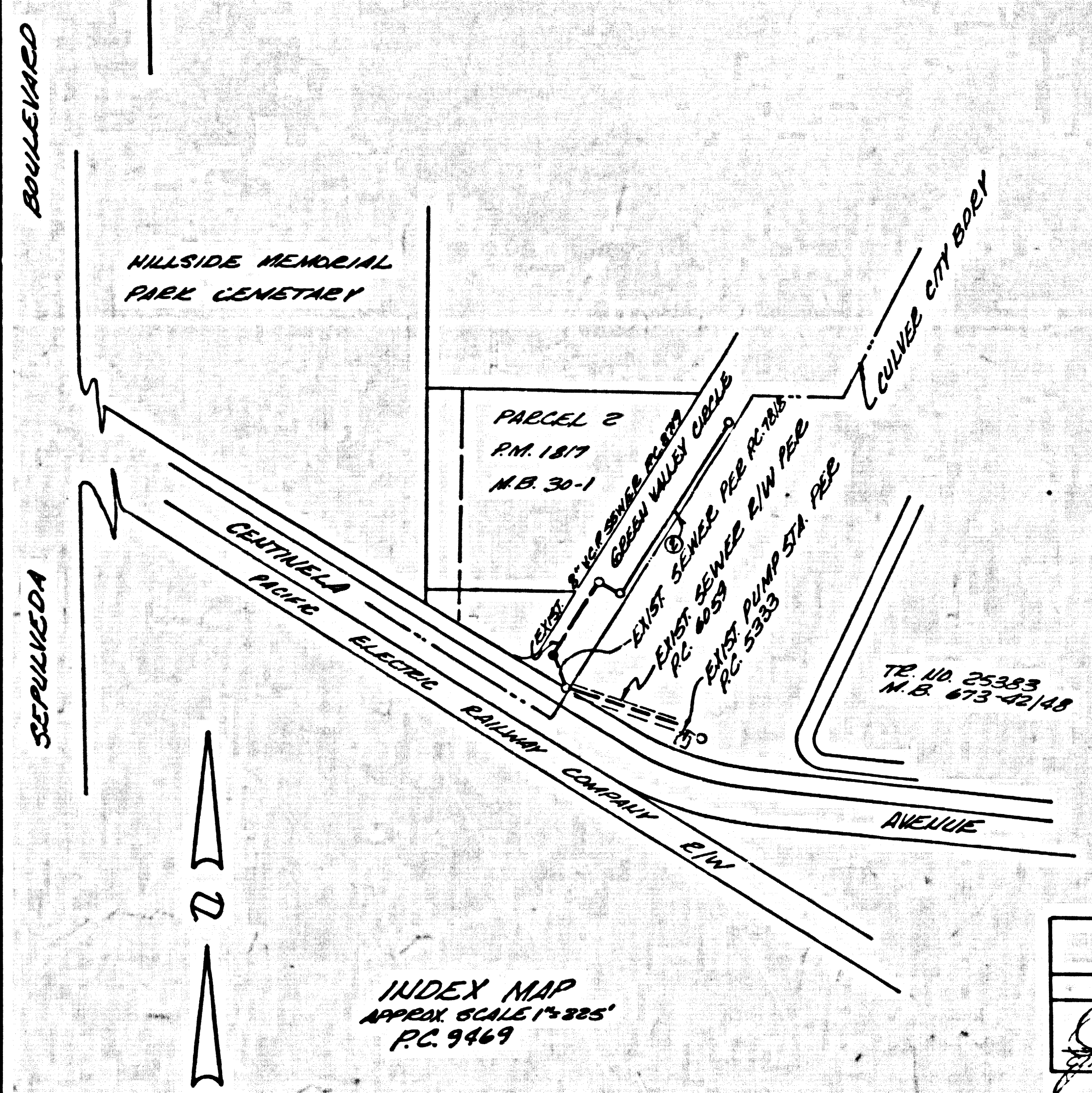
GENERAL NOTES:

- ELEVATIONS ARE IN FEET ABOVE U.S.C. & G.S. SEA LEVEL DATUM OF 1929.
- NO REVISIONS SHALL BE MADE IN THESE PLANS WITHOUT THE APPROVAL OF THE COUNTY ENGINEER & CULVER CITY ENGINEER.
- NO REPRESENTATIVE OF THE COUNTY ENGINEER WILL SURVEY OR LAY OUT ANY PORTION OF THE WORK.
- GRADES TO WHICH THIS IMPROVEMENT IS TO BE CONSTRUCTED ARE SHOWN ON PLANS AND PROFILES. GRADE POINTS FOR TOP OF CURB, CENTER LINE OF STREETS, OR CENTER LINE OF ALLEYS ARE SHOWN BY CIRCLES ON PROFILES. AT ALL POINTS BETWEEN DESIGNATED POINTS THE GRADE SHALL BE ESTABLISHED SO AS TO CONFORM TO A STRAIGHT LINE DRAWN BETWEEN SAID DESIGNATED POINTS.
- THE PRIVATE ENGINEER SHALL FURNISH THE COUNTY ENGINEER WITH GRADE SHEETS AND STATIONING FOR ALL HOUSE LATERALS AND "T" OR "Y" BRANCHES AND SHALL PROVIDE STAKES FOR THEM AT THEIR PROPER LOCATIONS WITH STATIONING PLAINLY MARKED. ALL HOUSE LATERALS SHALL BE CONSTRUCTED IN A STRAIGHT ALIGNMENT AT RIGHT ANGLES FROM THE MAIN LINE SEWER EXCEPT AS SHOWN ON THE PLANS. HOUSE LATERALS FROM CHIMNEYS SHALL NOT HAVE AN ANGLE OF LESS THAN 45° WITH THE MAIN LINE SEWER. ANY CHANGE IN ALIGNMENT SHALL BE REQUESTED IN WRITING BY THE PRIVATE ENGINEER.
- THE PRIVATE ENGINEER SHALL FURNISH THE HOUSE LATERAL DEPTH AT THE PROPERTY LINE BELOW THE TOP OF CURB ELEVATION FOR EACH HOUSE LATERAL ON THE GRADE SHEET.
- BEFORE WORK CAN BE STARTED, THE CONTRACTOR MUST OBTAIN A PERMIT TO EXCAVATE IN COUNTY STREETS FROM THE L.A. COUNTY ROAD DEPT., DISTRICT OFFICE NO. _____ AND PAY A FEE TO THE COUNTY ENGINEER, PALMS HEIGHTS: GREEN VALLEY REGIONAL OFFICE, TO COVER THE COST OF CONSTRUCTION INSPECTION AND RECORD PLANS.
- IF WORK IS TO BE DONE IN A STATE HIGHWAY, A PERMIT MUST BE OBTAINED FROM THE STATE OF CALIFORNIA, DIVISION OF HIGHWAYS, 120 SOUTH SPRING STREET, LOS ANGELES, CALIFORNIA.
- APPROVAL OF THIS PLAN BY THE COUNTY OF LOS ANGELES DOES NOT CONSTITUTE A REPRESENTATION AS TO THE ACCURACY OF THE LOCATION OF OR THE EXISTENCE OR NON-EXISTENCE OF ANY UNDERGROUND UTILITY PIPE, OR STRUCTURE WITHIN THE LIMITS OF THIS PROJECT. THIS NOTE APPLIES TO ALL GRADES.
- REFER TO SECTION 704.1 OF THE STANDARD SPECIFICATIONS, REGARDING SAFETY DEVICES.
- CONTRACTOR MUST OBTAIN EXCAVATION PERMIT FROM CITY OF CULVER CITY BEFORE ANY WORK DONE IN CITY STREETS.
- STREET PAVEMENT SHALL BE REPLACED IN ACCORDANCE TO THE CITY OF CULVER CITY STANDARDS AND SHALL CONSIST OF 6" THICK A.C. IMPROVEMENT PAVED ON A 4" THICK C.E.B. ALL EXCAVATION OF THE TRENCH SHALL BE COMPACTED TO A MIN. OF 98% OF CALIFORNIA COUNTY OR BACKFILL WITH SAID CURRY 1-1 SAND GRADENT PER CUBIC YARD.

CONSTRUCTION NOTES:

- WORK SHALL BE CONSTRUCTED ACCORDING TO THE STANDARD SPECIFICATIONS FOR PUBLIC WORKS CONSTRUCTION (1976 EDITION WITH 77 SUPPLEMENTS) AND COUNTY ENGINEER SPECIAL PROVISIONS FOR THE CONSTRUCTION OF SANITARY SEWERS DATED 12/22/76 AND SHALL BE PROSECUTED ONLY IN THE PRESENCE OF THE COUNTY ENGINEER, HIS ASSISTANT ENGINEER OR THE COUNTY ENGINEER'S DIVISION BY TELEPHONE 874-7425 TO 11:55 A.M. AT LEAST TWENTY FOUR HOURS BEFORE STARTING ANY WORK UNDER THIS CONTRACT, AND CITY OF CULVER CITY INACCURATE 127-524, 517 892.
- HOUSE LATERALS TO BE CONSTRUCTED WITH INVERTS AT PROPERTY LINE 6 FEET BELOW CURB GRADE EXCEPT AS NOTED.
- WYE OR TEE BRANCHES MAY BE USED FOR CONNECTIONS TO MAINLINE SEWERS EXCEPT AS NOTED.
- ALL STRUCTURES SHALL BE EITHER BRICK MANHOLES PER 5-3 OR PRECAST CONCRETE MANHOLES PER 5-26, EXCEPT AS NOTED.
- PROVIDE STAKES ON THE PROPERTY LINE OR PROPERTY LINES PRODUCED AT RIGHT ANGLES TO THE SEWER LINE AT THE CENTER LINE OF EACH MANHOLE.
- MANHOLE TOPS IN UNIMPROVED RIGHTS OF WAY TO BE SIX INCHES ABOVE FINISHED GRADE.
- VITRIFIED CLAY PIPE JOINTS SHALL BE TYPE "B", "T", OR "C" PER STANDARD SPECIFICATIONS SECTION 200-2.
- IF A POWER POLE IS WITHIN THREE FEET OF THE SEWER, THE SEWER SHALL BE ENCASED, PER 5-23, CASE 2, TWO FEET ON EACH SIDE FROM THE POINT OF INTERFERENCE.
- IF DURING THE COURSE OF CONSTRUCTION IT IS DETERMINED THAT THERE IS LESS THAN FOUR FEET OF COVER OVER THE TOP OF A MAIN LINE OR HOUSE LATERAL V.C.P. SEWER WHICH IS NOT INDICATED ON THE PLANS, THE PIPE SHALL BE ENCASED PER 5-23, CASE 2 UNLESS OTHERWISE APPROVED BY THE COUNTY ENGINEER.
- ALL JOINTS BETWEEN CAST IRON PIPE AND VITRIFIED CLAY PIPE SHALL BE MADE WITH A RUBBER SLEEVE JOINT, TYPE "C" OR "B", WITH RAINING IF NECESSARY PER STANDARD SPECIFICATIONS, SECTION 200-2.
- SEWERS TO BE TESTED FOR LEAKAGE PER SECTION 200-4 OF THE STANDARD SPECIFICATIONS AND SPECIAL PROVISIONS.
- RESURFACE ALL TRENCHES WITHIN PAVED AREAS TO MEET L.A. COUNTY ROAD DEPT. OR CALIFORNIA STATE HIGHWAY REQUIREMENTS IN ACCORDANCE WITH PERMITS.
- FULL COMPLIANCE WITH SECTION 200-1.02 OF THE SPECIAL PROVISIONS WILL BE REQUIRED FOR BACKFILL IN STREETS. CERTIFICATION OF BACKFILL COMPACTION AND SAND EQUIVALENTS BY A QUALIFIED, REGISTERED TESTING LABORATORY SHALL BE PROVIDED BY THE PERMITTEE PRIOR TO THE ISSUANCE OF A CERTIFICATE OF PARTIAL ACCEPTANCE.
- IN ADDITION TO ASSURANCE OF THE REQUIRED REMEDIAL CONSTRUCTION PERMIT BY THE COUNTY ENGINEER, THE PERMITTEE SHALL OBTAIN INSURANCE FROM THE STATE OF CALIFORNIA, DIVISION OF INDUSTRIAL SAFETY AND SHALL FILE A CERTIFICATE OF WORKERS COMPENSATION INSURANCE AND LIABILITY INSURANCE WITH THE COUNTY ENGINEER.

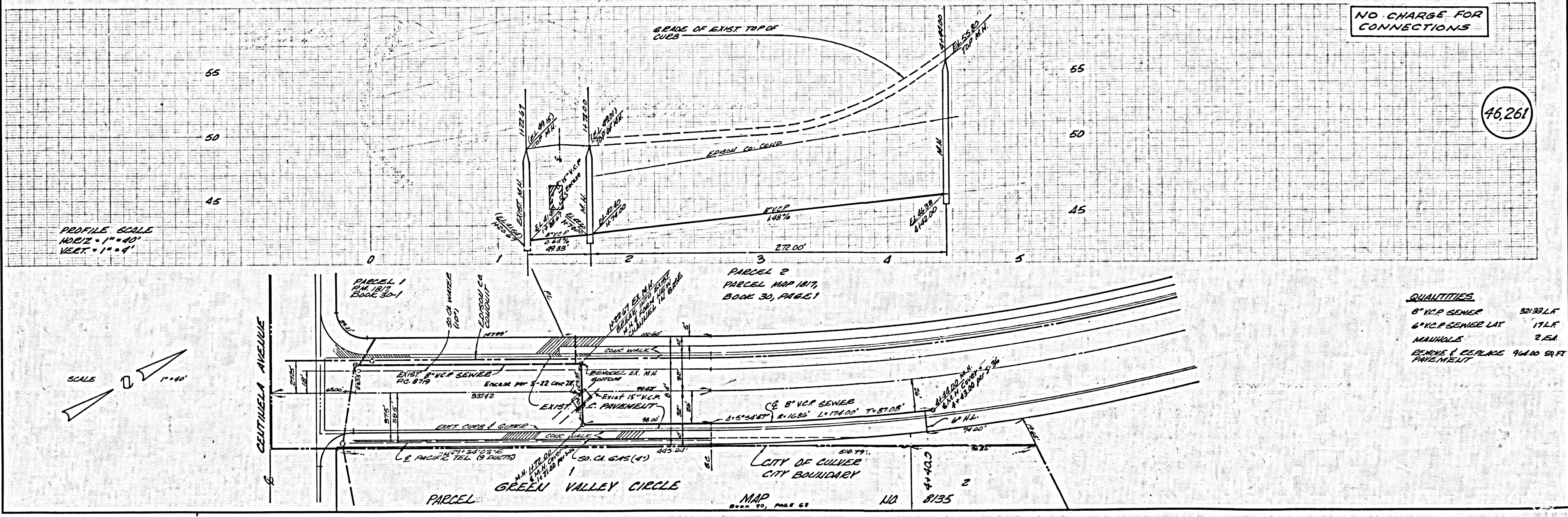
B.M. #7-0331 ELEV. 46.139
 WIDE SPACE IN LA COUNTY GREEN VALLEY
 1/10 W. END C.P. 811.00
 1/10 W. END C.P. 811.00
 210 SEPULVEDA
 QUAD. 19



CITY OF CULVER CITY
 APPROVED BY
John Lathrop 1-4-78
 CITY ENGINEER DATE

NO CONNECTION FOR THE DISPOSAL OF INDUSTRIAL WASTES SHALL BE MADE TO SEWERS SHOWN ON THESE DRAWINGS UNTIL A PERMIT FOR INDUSTRIAL WASTE WATER DISCHARGE HAS BEEN ISSUED BY THE SANITATION DISTRICTS FOR SAID CONNECTION.

BEFORE BREAKING INTO OR CONSTRUCTION ON A COUNTY SANITATION DISTRICT SEWER AND PRIOR TO FINAL ACCEPTANCE OF THE PROJECT SANITATION DISTRICT INSPECTOR SHALL BE NOTIFIED BY PHONE 626-1161.30 THAT REQUIRED INSPECTION CAN BE MADE.



NO CHARGE FOR CONNECTIONS

46,261

QUANTITIES

8" V.C.P. SEWER	3213.6 LF
6" V.C.P. SEWER LAY	17 LF
MANHOLE	2 EA
REMOVE & REPLACE	966.00 SQ FT PAVEMENT