

TO BE CONSTRUCTED IN
TRACT NO. 33890 & 32084

PRIVATE CONTRACT NO. 9470
 255 S 121 ; 258 S 121
 W.S. 62: A-3

7 SHEETS, 14 PAGES
 SCALE: VERT. 1"=4'
 HORIZ. 1"=40'
 JUNE 1978
 PREPARED IN THE OFFICES OF
SIMAND ENGINEERING ASSOCIATES
 13230 BURBANK BLVD. VAN NUYS
 CA. 91411 (818) 787-8350
 BY: *Xatohk C. Kambert*
 REG. C. E. No. 2893

46813

THE FOLLOWING LATEST REVISED STANDARD PLANS ON FILE IN THE OFFICE OF THE COUNTY ENGINEER SHALL APPLY IN THE CONSTRUCTION OF THIS PROJECT.

LEGEND	5-1
MINIMUM PUBLIC SAFETY REQUIREMENTS	5-2
BRICK MANHOLE	5-3
STANDARD MANHOLE RFP	5-7
BEDDING FOR SEWER PIPE	5-11
CRADLING AND ENCASUREMENT	5-12
WTE OR TEE SUPPORT	5-13
ALLOWABLE TRENCH WIDTHS	5-14
LOCKING MANHOLE FRAME AND COVER	5-16
NON-REINFORCED PRECAST CONCRETE MANHOLE	5-18
REINFORCED PRECAST CONCRETE MANHOLE	5-19
CAST CONC. SHALLOW MANHOLE	5-23

COUNTY OF LOS ANGELES, CALIFORNIA
 STEPHEN J. KOONCE COUNTY ENGINEER JOHN D. PARKHURST, CHIEF ENGINEER
 (SAN DIST. NO. 32)
 APPROVED *Sam H. Miller* 6-9-78 APPROVED *William C. Stuyf*
 REGIONAL ENGINEER (DATE) 2537, OFFICE ENGINEER
 CHECKED *London H. Martin* 6-9-78 (DATE)
 NO. C.E. NO. 13786
 SANTA CLARITA VALLEY BLDG. DIST. 02 1.N.0250.02

- GENERAL NOTES:**
- ELEVATIONS ARE IN FEET ABOVE U.S.C. & G.S. SEA LEVEL DATUM OF 1929.
 - NO REVISIONS SHALL BE MADE IN THESE PLANS WITHOUT THE APPROVAL OF THE COUNTY ENGINEER.
 - NO REPRESENTATIVE OF THE COUNTY ENGINEER WILL SURVEY OR LAY OUT ANY PORTION OF THE WORK.
 - GRADES TO WHICH THIS IMPROVEMENT IS TO BE CONSTRUCTED ARE SHOWN ON PLANS AND PROFILES. GRADE POINTS FOR TOP OF CURBS, CENTER LINE OF STREETS, OR CENTER LINE OF ALLEYS ARE SHOWN BY CIRCLES ON PROFILES. AT ALL POINTS BETWEEN DESIGNATED POINTS THE GRADE SHALL BE ESTABLISHED SO AS TO CONFORM TO A STRAIGHT LINE DRAWN BETWEEN SAID DESIGNATED POINTS.
 - THE PRIVATE ENGINEER SHALL FURNISH THE COUNTY ENGINEER WITH GRADE SHEETS AND STATIONING FOR ALL HOUSE LATERALS AND "T" OR "T" BRANCHES AND SHALL PROVIDE STAKES FOR THEM AT THEIR PROPER LOCATIONS WITH STATIONING PLAINLY MARKED. ALL HOUSE LATERALS SHALL BE CONSTRUCTED IN A STRAIGHT ALIGNMENT AT RIGHT ANGLES FROM THE MAIN LINE SEWER EXCEPT AS SHOWN ON THE PLANS. HOUSE LATERALS FROM CHIMNEYS SHALL NOT HAVE AN ANGLE OF LESS THAN 45° WITH THE MAIN LINE SEWER. ANY CHANGE IN ALIGNMENT SHALL BE REQUESTED IN WRITING BY THE PRIVATE ENGINEER.
 - THE PRIVATE ENGINEER SHALL FURNISH THE HOUSE LATERAL DEPTH AT THE PROPERTY LINE BELOW THE TOP OF CURB ELEVATION FOR EACH HOUSE LATERAL ON THE GRADE SHEET.
 - BEFORE WORK CAN BE STARTED, THE CONTRACTOR MUST OBTAIN A PERMIT TO EXCAVATE IN COUNTY STREETS FROM THE L.A. COUNTY ROAD DIST. DISTRICT OFFICE NO. 4 AND PAY A FEE TO THE COUNTY ENGINEER, SANTA CLARITA VALLEY REGIONAL OFFICE, TO COVER THE COST OF CONSTRUCTION INSPECTION AND RECORD PLANS.
 - IF WORK IS TO BE DONE IN A STATE HIGHWAY, A PERMIT MUST BE OBTAINED FROM THE STATE OF CALIFORNIA, DIVISION OF HIGHWAYS, 130 SOUTH SPRING STREET, LOS ANGELES, CALIFORNIA.
 - APPROVAL OF THIS PLAN BY THE COUNTY OF LOS ANGELES DOES NOT CONSTITUTE A REPRESENTATION AS TO THE ACCURACY OF THE LOCATION OF OR THE EXISTENCE OR NON-EXISTENCE OF ANY UNDERGROUND UTILITY PIPE, OR STRUCTURE WITHIN THE LIMITS OF THIS PROJECT. THIS NOTE APPLIES TO ALL PAGES.
 - REFER TO SECTION 710.4. OF THE STANDARD SPECIFICATIONS, REGARDING SAFETY ORDERS.
 - PRIOR TO THE ISSUANCE OF THE REQUIRED SEWER CONSTRUCTION PERMIT BY THE COUNTY ENGINEER, THE CONTRACTOR SHALL OBTAIN A "PERMIT TO EXCAVATE" FROM THE STATE OF CALIFORNIA, DIVISION OF INDUSTRIAL SAFETY.
 - PRIOR TO THE ISSUE OF THE REQUIRED SEWER CONSTRUCTION PERMIT BY THE COUNTY ENGINEER, THE CONTRACTOR SHALL OBTAIN A CERTIFICATE OF WORKERS COMPENSATION INSURANCE LISTING THE LOS ANGELES COUNTY ENGINEER, 23155 WEST VALENCIA BOULEVARD, VALENCIA, CALIFORNIA, 91355 AS THE CERTIFICATE HOLDER.

- CONSTRUCTION NOTES:**
- WORK SHALL BE CONSTRUCTED ACCORDING TO THE STANDARD SPECIFICATIONS FOR PUBLIC WORKS CONSTRUCTION (1116 EDITION) AND COUNTY ENGINEER SPECIAL PROVISIONS FOR THE CONSTRUCTION OF SANITARY SEWERS DATED SEPT. 24, 1976 AND SHALL BE PROSECUTED UNDER THE PRESENCE OF THE COUNTY ENGINEER.
 - THE CONTRACTOR SHALL NOTIFY THE DESIGN DIVISION BY TELEPHONE, (818) 974-7283, AT LEAST TWENTY-FOUR HOURS BEFORE STARTING ANY WORK UNDER THIS CONTRACT.
 - HOUSE LATERALS TO BE CONSTRUCTED WITH INVERTS AT PROPERTY LINE & FEET BELOW CURB GRADE EXCEPT AS NOTED.
 - WYE OR TEE BRANCHES MAY BE USED FOR CONNECTIONS TO EXISTING SEWERS EXCEPT AS NOTED.
 - ALL STRUCTURES SHALL BE EITHER BRICK MANHOLES PER 5-3 OR PRECAST CONCRETE MANHOLES PER 5-16, EXCEPT AS NOTED.
 - PROVIDE STAKES ON THE PROPERTY LINE OR PROPERTY LINES PRECISELY AT RIGHT ANGLES TO THE SEWER LINE AT THE CENTER LINE OF EACH MANHOLE.
 - MANHOLE TOPS IN UNIMPROVED RIGHTS OF WAY TO BE SIX INCHES ABOVE FINISHED GRADE.
 - VITRIFIED CLAY PIPE JOINTS SHALL BE TYPE "B", "F", OR "G" PER STANDARD SPECIFICATIONS SECTION 200-2.
 - IF A POWER POLE IS WITHIN THREE FEET OF THE SEWER, THE SEWER SHALL BE ENCASED, PER 3-23, CASE II, TWO FEET ON EACH SIDE FROM THE POINT OF INTERFERENCE.
 - IF DURING THE COURSE OF CONSTRUCTION IT IS DETERMINED THAT THERE IS LESS THAN FOUR FEET OF COVER OVER THE TOP OF A MAIN LINE OR HOUSE LATERAL V.C.P. SEWER WHICH IS NOT INDICATED ON THE PLANS, THE PIPE SHALL BE ENCASED PER 3-23, CASE II UNLESS OTHERWISE APPROVED BY THE COUNTY ENGINEER.
 - ALL JOINTS BETWEEN CAST IRON PIPE AND VITRIFIED CLAY PIPE SHALL BE MADE WITH A RUBBER SLEEVE JOINT, TYPE "C" OR "D", (WITH BUSHING IF NECESSARY) PER STANDARD SPECIFICATIONS, SECTION 200-2.
 - SEWERS TO BE TESTED FOR LEAKAGE PER SECTION 206-1.6 OF THE STANDARD SPECIFICATIONS AND SPECIAL PROVISIONS.
 - RESURFACE ALL TRENCHES WITHIN PAVED AREAS TO MEET L.A. COUNTY ROAD DEPT. OR CALIFORNIA STATE HIGHWAY REQUIREMENTS IN ACCORDANCE WITH PERMITS.
 - FULL COMPLIANCE WITH SECTION 206-1.3.5 OF THE SPECIAL PROVISIONS WILL BE REQUIRED FOR BACKFILL IN STREETS. CERTIFICATION OF BACKFILL COMPACTNESS AND SAND EQUIVALENTS BY A QUALIFIED, REGISTERED TESTING LABORATORY SHALL BE PROVIDED BY THE PERMITTEE PRIOR TO THE ISSUANCE OF A CERTIFICATE OF PARTIAL ACCEPTANCE.

SPECIAL BACKFILL IN EASEMENT CONSTRUCTION
 a. BACKFILL TRENCH AND REPLACE OTHER EARTH SO AS TO ACHIEVE THE NATURAL OR FINISHED GRADES AND SLOPES SHOWN ON THE GRADING PLAN APPROVED FOR THIS DEVELOPMENT BY THE BUILDING AND SAFETY DIVISION.
 b. ALL BACKFILL AND EARTH REPLACED SHALL BE COMPACTED TO A MINIMUM OF 90% OF MAXIMUM DENSITY PER A.S.T.M. STANDARD METHOD OF TEST D-698-57T AS MODIFIED. ACCEPTABLE CERTIFICATION OF SUCH COMPACTNESS SHALL BE SUBMITTED TO THE DESIGN DIVISION.

BEFORE BREAKING INTO OR CONSTRUCTION ON A COUNTY SANITATION DISTRICT SEWER AND PRIOR TO FINAL ACCEPTANCE OF THE PROJECT SANITATION DISTRICT INSPECTION SHALL BE NOTIFIED BY PHONE 962-8600, SO THAT REQUIRED INSPECTION CAN BE MADE.

NO CONNECTION FOR THE DISPOSAL OF INDUSTRIAL WASTES SHALL BE MADE TO SEWERS SHOWN ON THESE DRAWINGS UNTIL A PERMIT FOR INDUSTRIAL WASTE WATER DISCHARGE HAS BEEN ISSUED BY THE SANITATION DISTRICTS FOR SAID CONNECTION.

REVISION 5-20-78
 REPLACED 5-26 M.H. WITH 5-32 M.H. @ STA. 1+79.23 ON PAGE 14 D TO MISS EXIST. UTILITIES.
 ALSO MINOR ALIGNMENT CHANGE BETWEEN STA. 0+50 AND STA. 3+42.47 ON PAGE 14 D. ON PAGE 14 C ADJUSTED M.H. LOCATION @ STA. 0+29.50
 APPROVED: *M. J. ...* 10653
 4/18/78 OFFICE OF COUNTY ENGINEER R.C.E. NO.

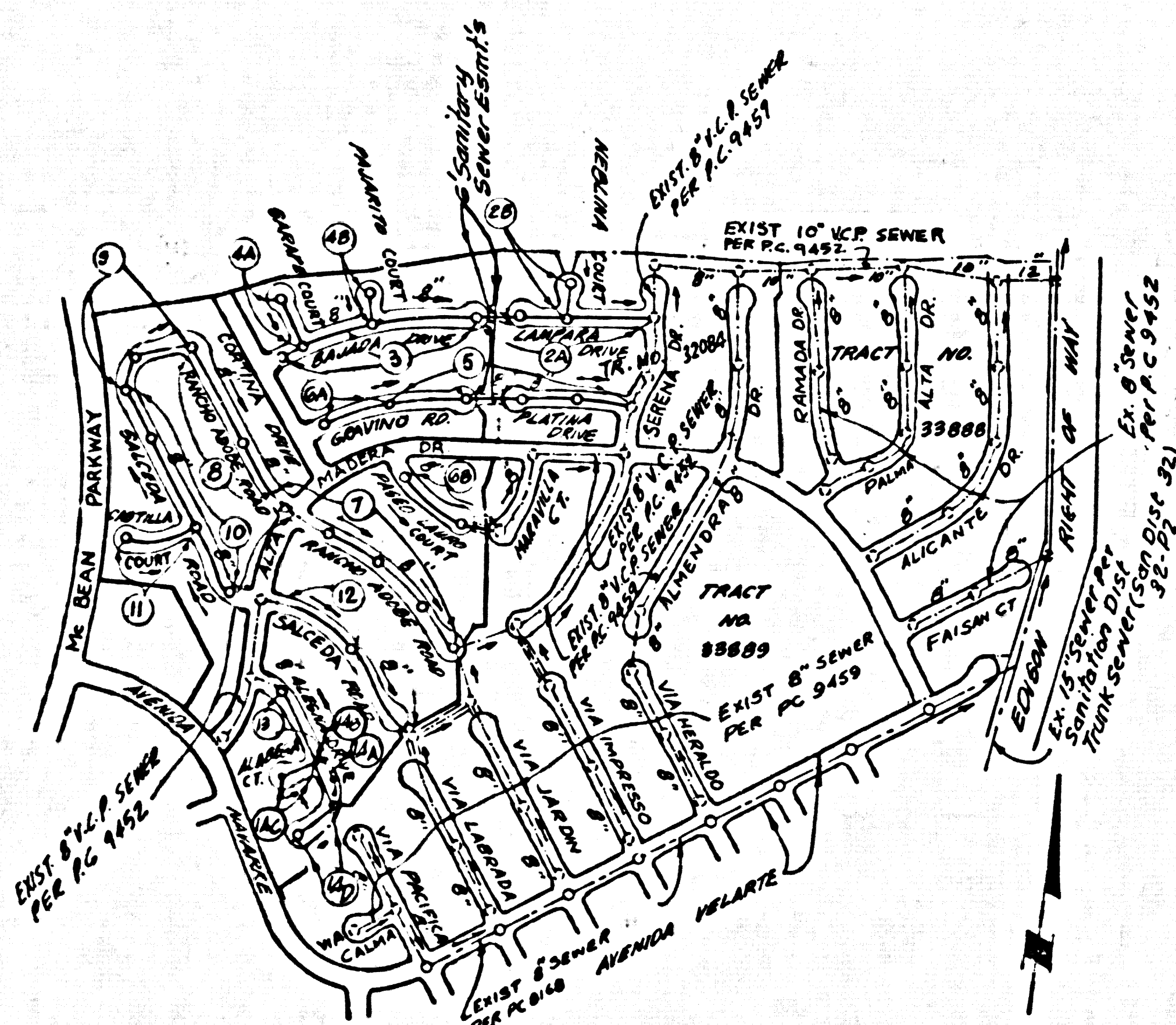
LOTS 190 TO 192 OF TRACT NO. 33890 & LOT 91 OF TRACT NO. 32084 ARE NOT TO BE SERVED (THIS ONLY)

LOTS 13 TO 19 & 78 OF TRACT NO. 33890 TO BE SERVED BY P.C. 9452

LOTS 31 TO 48 OF TRACT NO. 32084 ARE SERVED BY P.C. 9459

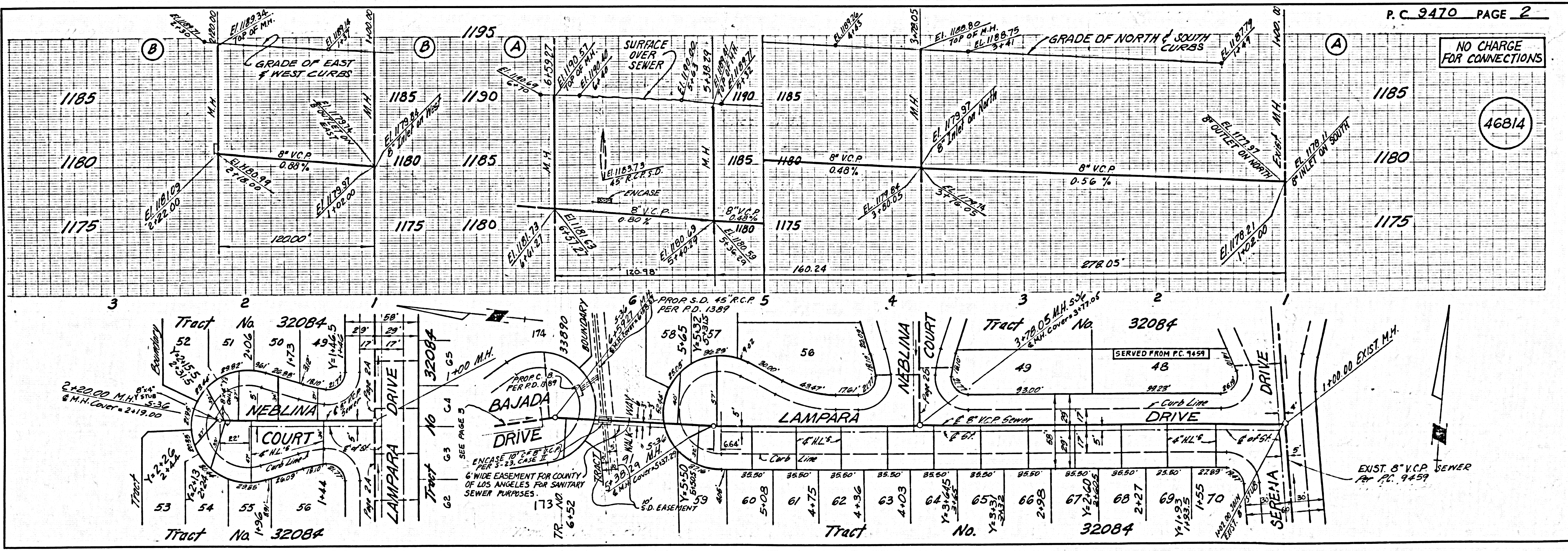
ISSUE NO PERMITS UNTIL R.C. 9452 & P.C. 9459 ARE ACCEPTED.

B.M. 01.4236 ELEV. 1211.232
 RD. 0.87 TAB N.C.B. AVENIDA NAVARRA
 77 E. + 30 1/2 INT. MEDIAN P.W.Y.
 N.E. COR.
 NEWHALL QUAD. 19.72



INDEX MAP
 Scale: 1"=500'

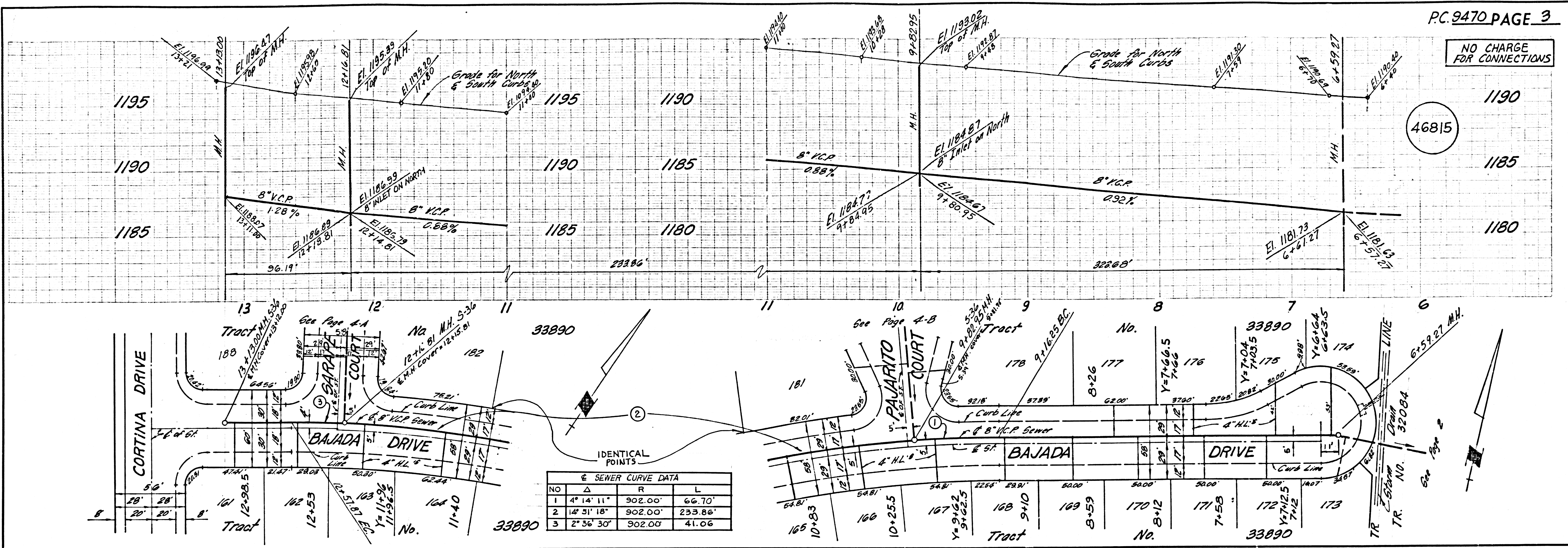
Note: Numbers in circle indicate page number



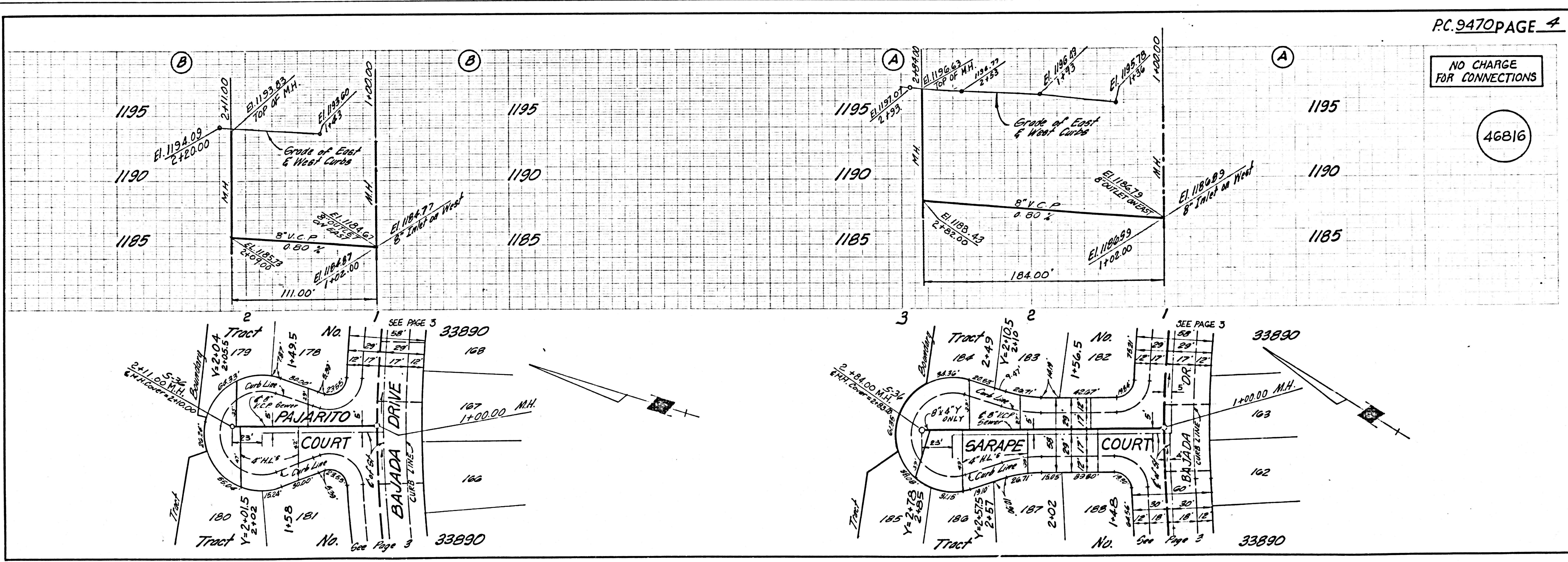
NO CHARGE FOR CONNECTIONS

46814

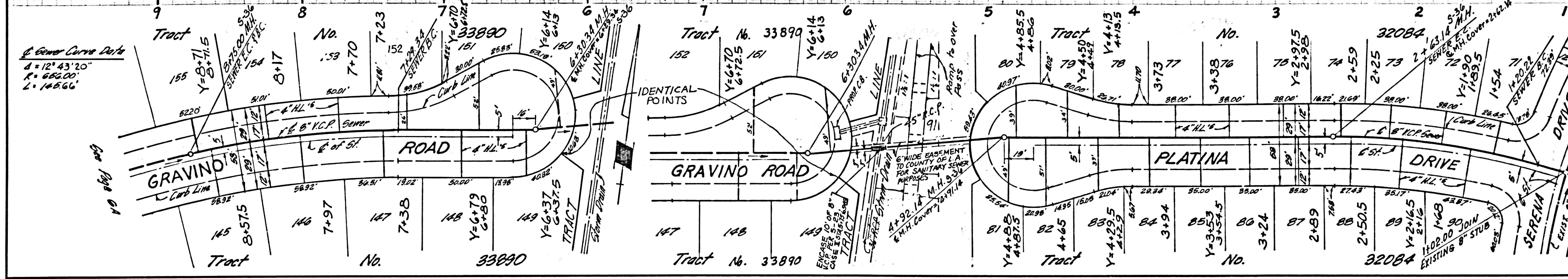
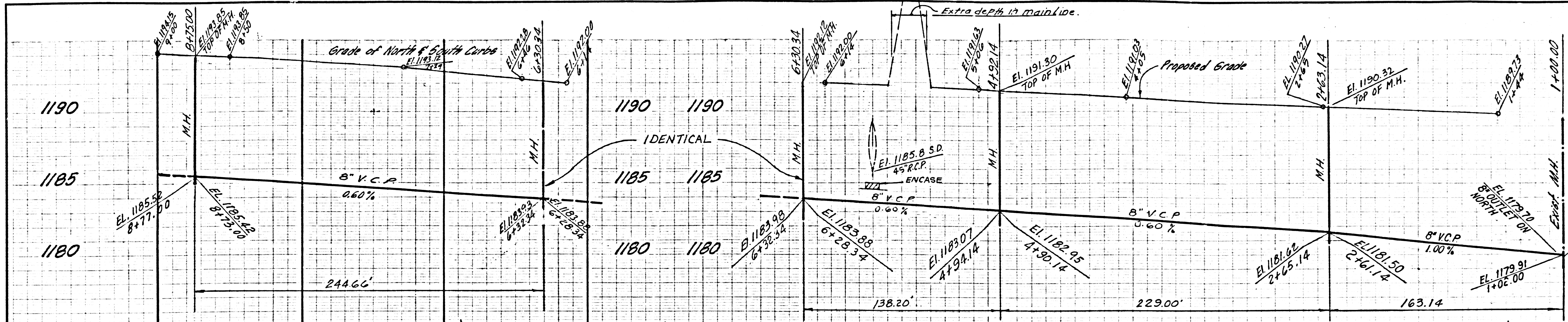
NO CHARGE FOR CONNECTIONS



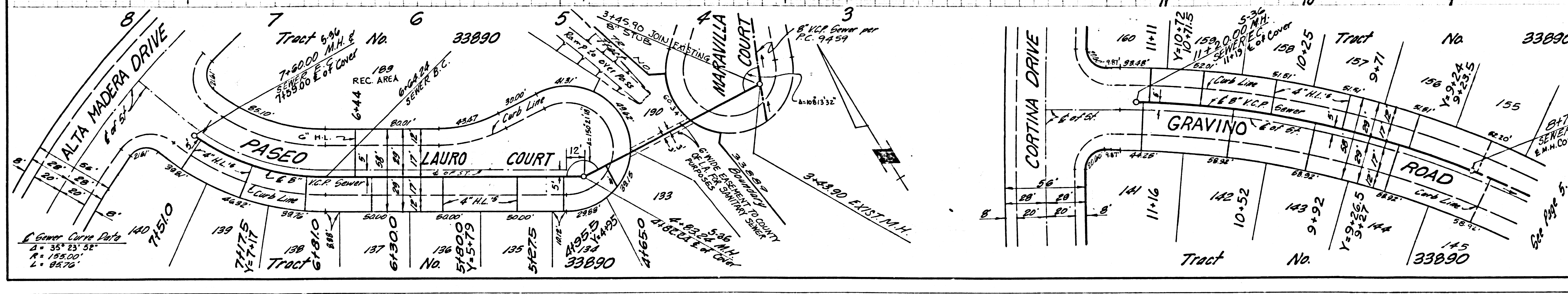
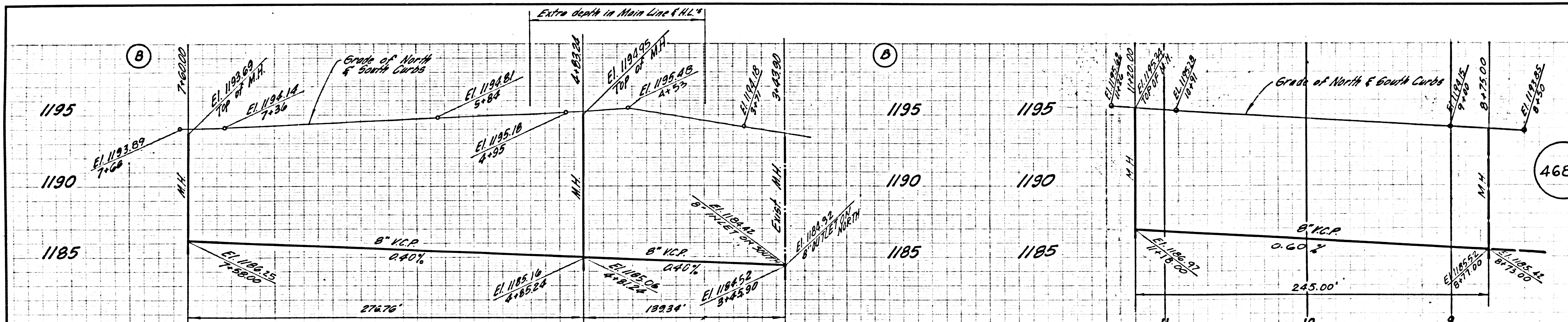
NO CHARGE FOR CONNECTIONS

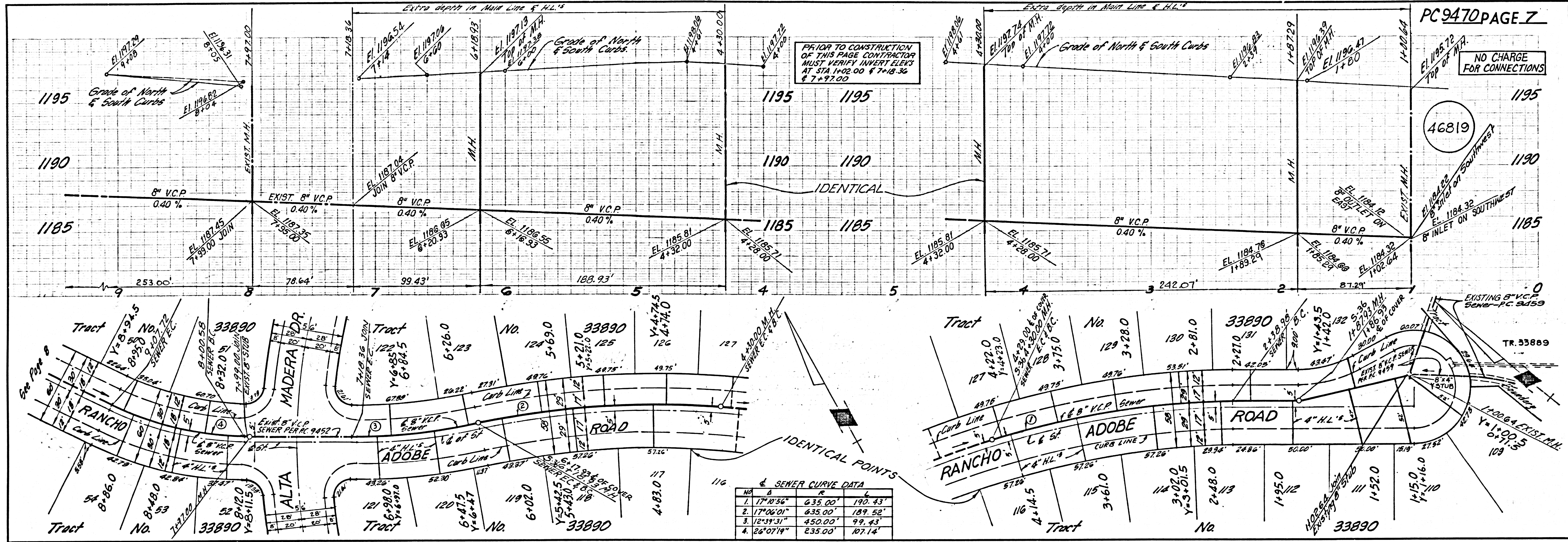


NO CHARGE FOR CONNECTIONS



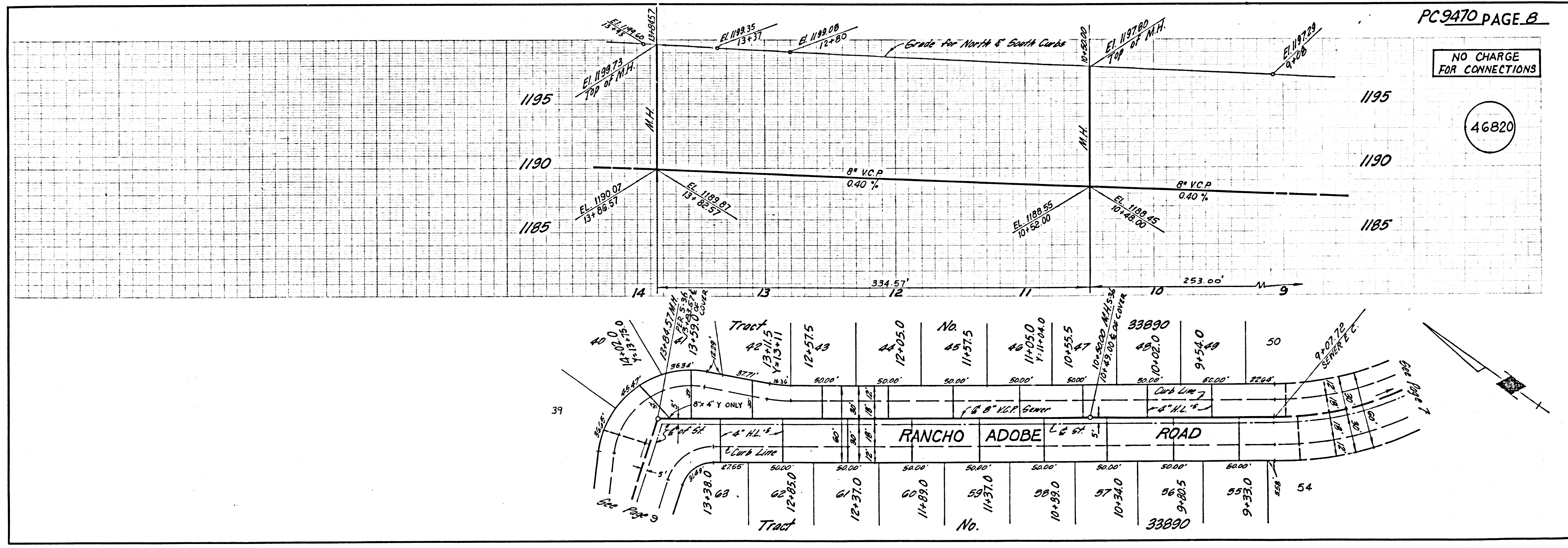
NO CHARGE FOR CONNECTIONS





SEWER CURVE DATA

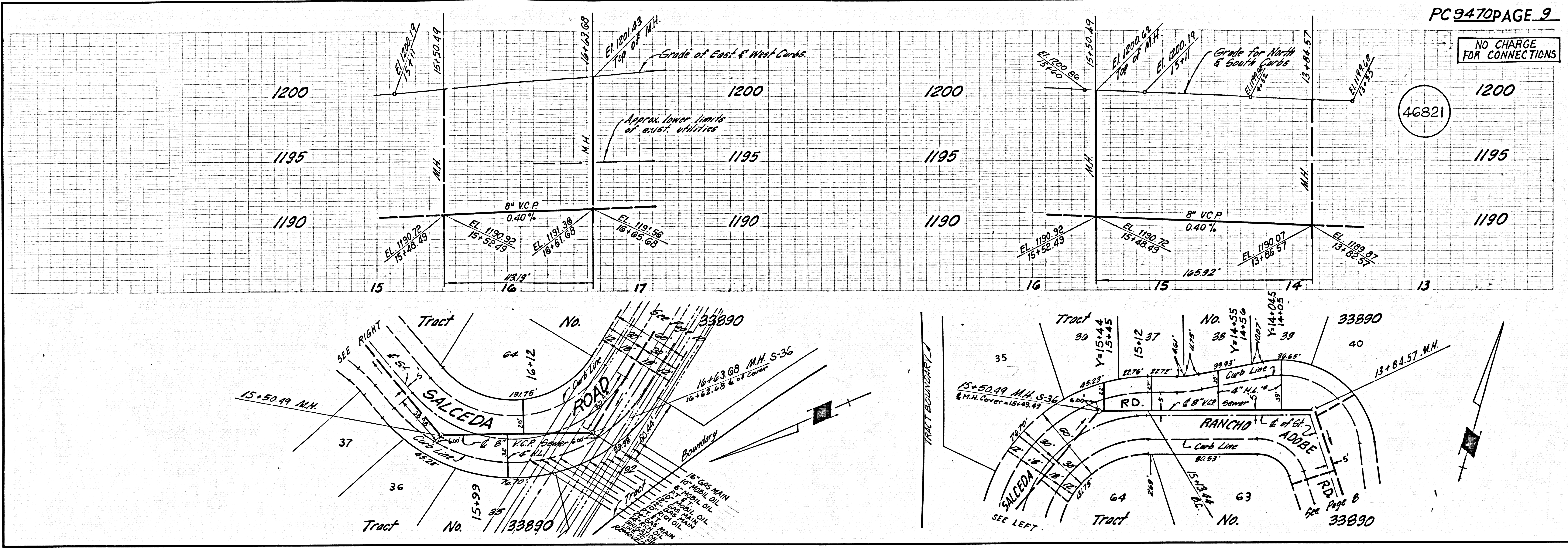
NO.	Δ	Δ	Δ
1	17°10'56"	235.00'	190.43'
2	17°06'01"	435.00'	189.52'
3	12°39'31"	450.00'	99.43'
4	26°07'14"	235.00'	107.14'



PC 9470

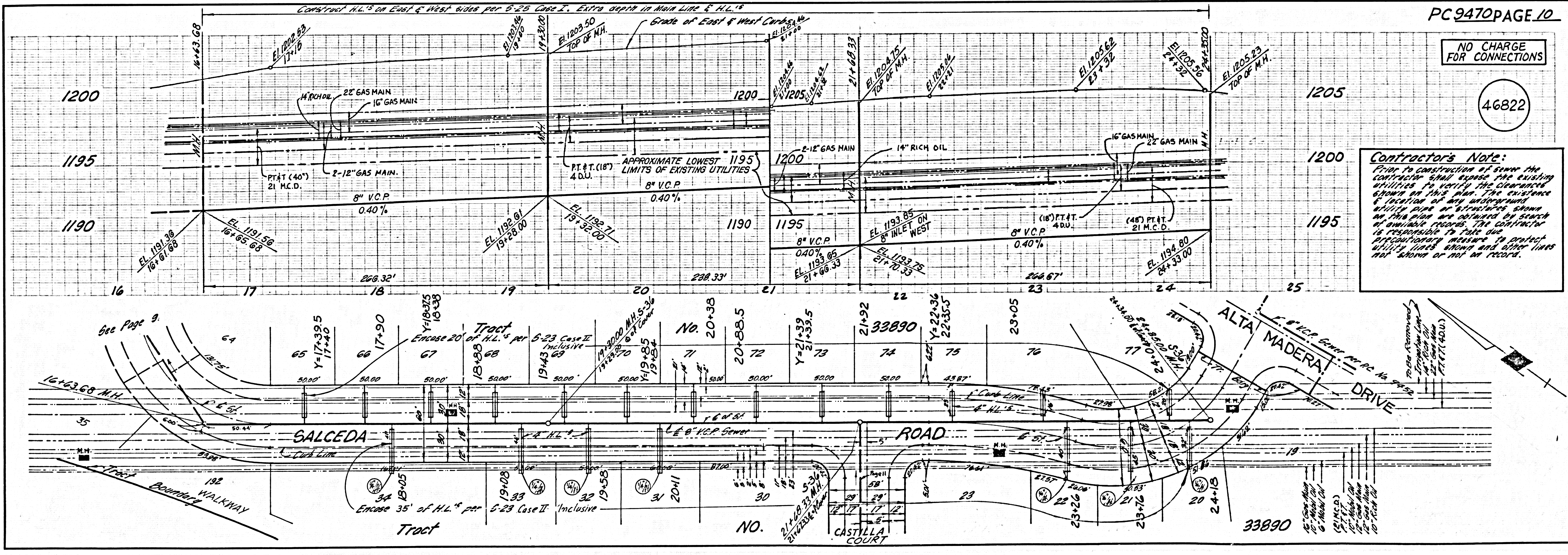
NO CHARGE FOR CONNECTIONS

46821



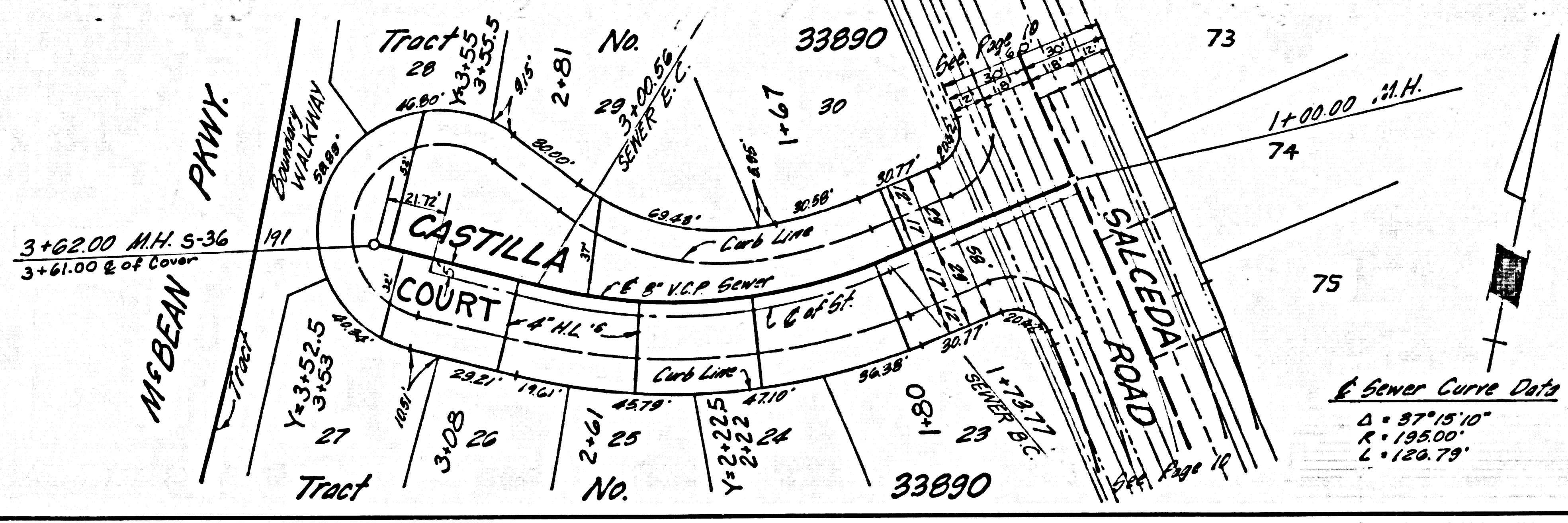
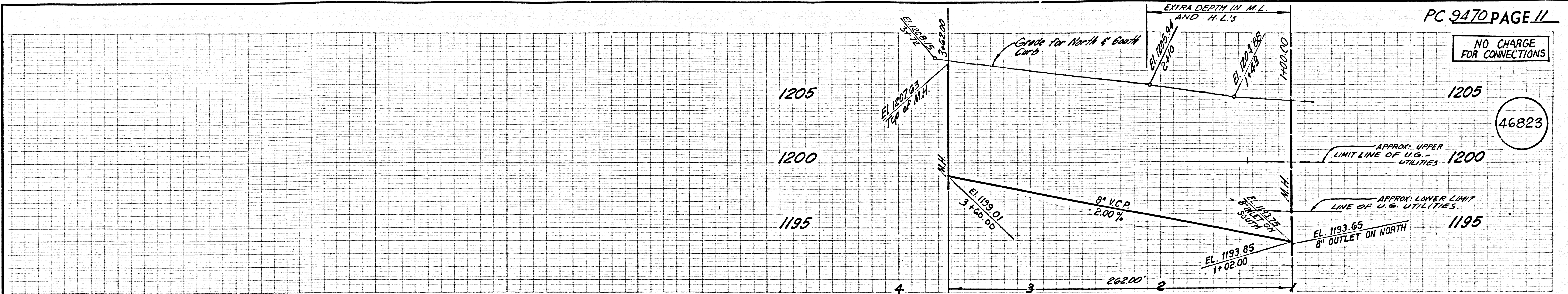
NO CHARGE FOR CONNECTIONS

46822



NO CHARGE FOR CONNECTIONS

46823



NO CHARGE FOR CONNECTIONS

46824

