

B.M. BY 9059 ELEV. 1282.901

RDBM TAG IN NLY END ROCK & CONC. HDWL 15 FT. N & 28 FT. E INT. MULLHOLLAND HWY. & CANYON DRIVE MALIBU QUAD. 19 12.

PRIOR TO ISSUANCE OF A PLUMBING PERMIT SEE L.V.M.W.D. FOR SEWER CONNECTION CHARGES.

DOUBLE SCALE

PROFILE, AUG. '61 'T AND GRADE OF

SANITARY SEWERS

PAGE 1

TO BE CONSTRUCTED IN

MULLHOLLAND HWY. ET AL

PRIVATE CONTRACT NO. 9480

W.S. 89 ; 41

3 SHEETS, 6 PAGES

47503

SCALE: VERT. 1"=6' HORIZ. 1"=40'

NOVEMBER, 1977

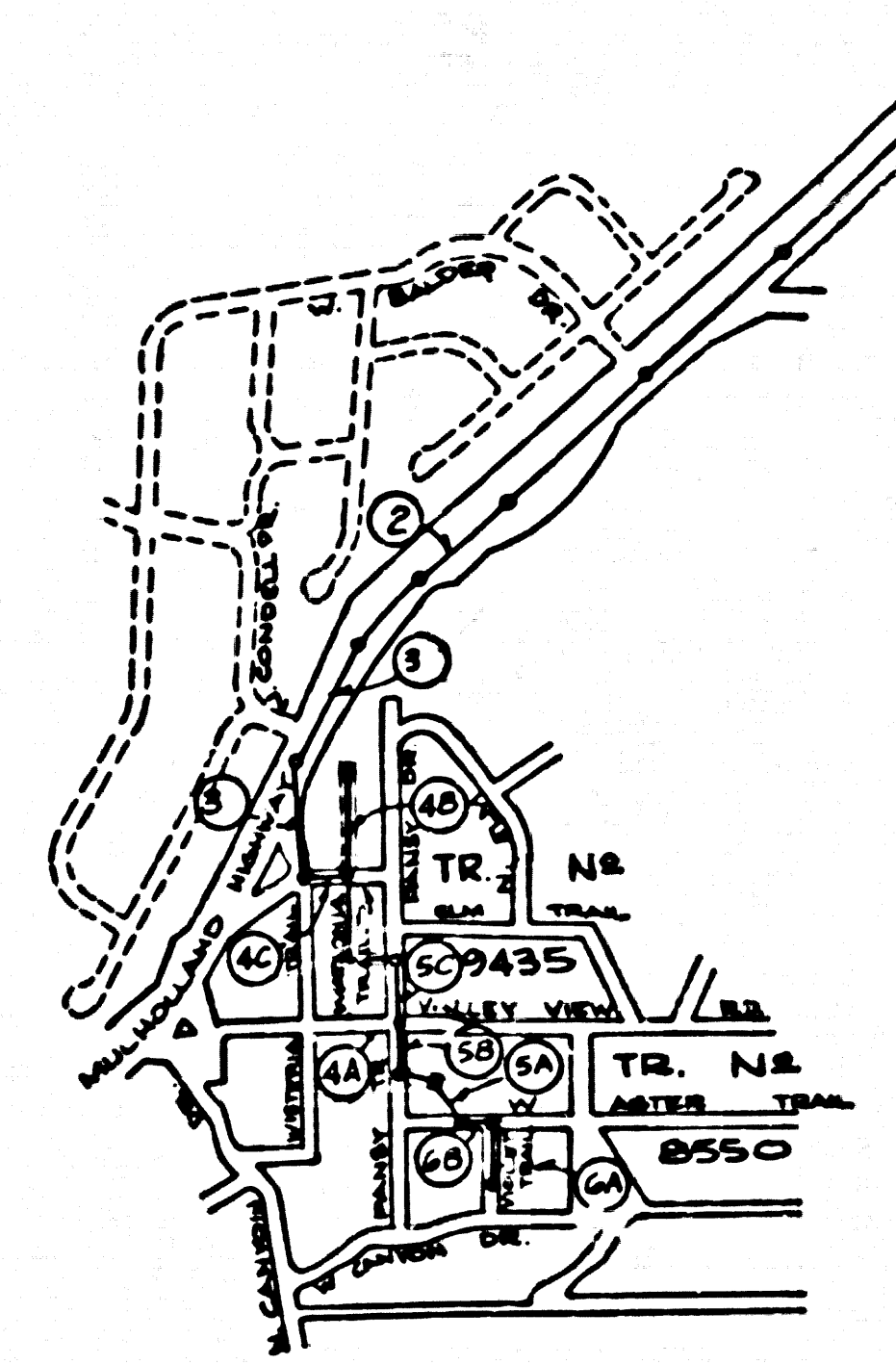
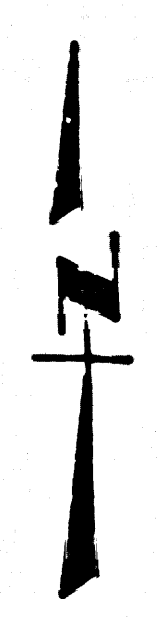
PREPARED IN THE OFFICES OF

BOYD BEASTROM & ASSOCIATES

NO. 238 WILSON BLVD., WOODLAND HILLS, CALIF. 91364

BY: Boyd Beastron

REG. C. E. No. 12672



NOTE: NUMBERS IN CIRCLES INDICATE PAGE NUMBERS

INDEX MAP SCALE: 1"=500' P.C. 9480

| REV. | DATE | DESCRIPTION |
|------|---------|--|
| 1 | 3-8-79 | BETWEEN STA. 0+00.00 AND STA. 3+78.00 ON PG. 5; AND BETWEEN STA. 0+00.00 AND STA. 0+96.00 LINE "B" ON PG. 6. RAISED SEWER GRADES DUE TO ADDITIONAL BUILDING. |
| | | APPROVED: Ralph Grand Simard DATE: 3/14/79 R.E. No. 16883 |
| 2 | 4-26-79 | BETWEEN STA. 0+00 AND STA. 10+33.99 ON PG. 2; AND BETWEEN STA. 10+33.99 AND STA. 16+92.86 ON PG. 3; AND STIPPLED LINE ON PG. 4 & 3 AT; AND FINISHED ELEVATIONS AND STATIONS FOR ALL HOUSE LATERALS AND "T" (AS CONSTRUCTED) ON ALL SHEETS. |
| | | APPROVED: Ralph Grand Simard DATE: 5/3/79 R.E. No. 17183 |

GENERAL NOTES:

- ELEVATIONS ARE IN FEET ABOVE U.S.C. & G.S. SEA LEVEL DATUM OF 1929.
- NO REVISIONS SHALL BE MADE IN THESE PLANS WITHOUT THE APPROVAL OF THE COUNTY ENGINEER.
- NO REPRESENTATIVE OF THE COUNTY ENGINEER WILL SURVEY OR LAY OUT ANY PORTION OF THE WORK.
- GRADES TO WHICH THIS IMPROVEMENT IS TO BE CONSTRUCTED ARE SHOWN ON PLANS AND PROFILES. GRADE POINTS FOR TOP OF CURB, CENTER LINE OF STREETS, OR CENTER LINE OF ALLEYS ARE SHOWN BY CIRCLES ON PROFILES. AT ALL POINTS BETWEEN DESIGNATED POINTS THE GRADE SHALL BE ESTABLISHED SO AS TO CONFORM TO A STRAIGHT LINE DRAWN BETWEEN SAID DESIGNATED POINTS.
- THE PRIVATE ENGINEER SHALL FURNISH THE COUNTY ENGINEER WITH GRADE SHEETS AND STATIONING FOR ALL HOUSE LATERALS AND "T" OR "Y" BRANCHES AND SHALL PROVIDE STAKES FOR THEM AT THEIR PROPER LOCATIONS WITH STATIONING PLAINLY MARKED. ALL HOUSE LATERALS SHALL BE CONSTRUCTED IN A STRAIGHT LINE ALIGNMENT AT RIGHT ANGLES FROM THE MAIN LINE SEWER EXCEPT AS SHOWN ON THE PLANS. HOUSE LATERALS FROM CHIMNEYS SHALL NOT HAVE AN ANGLE OF LESS THAN 45° WITH THE MAIN LINE SEWER. ANY CHANGE IN ALIGNMENT SHALL BE REQUESTED IN WRITING BY THE PRIVATE ENGINEER.
- THE PRIVATE ENGINEER SHALL FURNISH THE HOUSE LATERAL DEPTH AT THE PROPERTY LINE BELOW THE TOP OF CURB ELEVATION FOR EACH HOUSE LATERAL ON THE GRADE SHEET.
- BEFORE WORK CAN BE STARTED, THE CONTRACTOR MUST OBTAIN A PERMIT TO EXCAVATE IN COUNTY STREETS FROM THE L.A. COUNTY ROAD DEPT., DISTRICT OFFICE NO. 3, AND PAY A FEE TO THE COUNTY ENGINEER, REG. C. E. NO. 12672, IN THE AMOUNT OF \$200.00 TO COVER THE COST OF CONSTRUCTION INSPECTION AND RECORD PLANS.
- IF WORK IS TO BE DONE IN A STATE HIGHWAY, A PERMIT MUST BE OBTAINED FROM THE STATE OF CALIFORNIA, DIVISION OF HIGHWAYS, 130 SOUTH SPRING STREET, LOS ANGELES, CALIFORNIA.
- APPROVAL OF THIS PLAN BY THE COUNTY OF LOS ANGELES DOES NOT CONSTITUTE A REPRESENTATION AS TO THE ACCURACY OF THE LOCATION OF OR THE EXISTENCE OR NON-EXISTENCE OF ANY UNDERGROUND UTILITY PIPE, OR STRUCTURE WITHIN THE LIMITS OF THIS PROJECT. THE NOTE APPLIES TO ALL PAGES.
- REFER TO SECTION 7-16.4.J OF THE STANDARD SPECIFICATIONS, REGARDING SAFETY ORDERS.
- THE UNDERGROUND UTILITY COMPANIES WITHIN THE LIMIT OF THIS PROJECT ARE AS FOLLOWS:
 - SOUTHERN CALIFORNIA GAS COMPANY
 - LAS VIRGINAS MUNICIPAL WATER DISTRICT
- PRIOR TO ASSUMING THE OBLIGATIONS OF THE PROPOSED SEWER CONSTRUCTION PERMIT BY THE COUNTY ENGINEER THE CONTRACTOR SHALL OBTAIN A PERMIT TO EXCAVATE FROM THE STATE OF CALIFORNIA DIVISION OF INDUSTRIAL SAFETY AND SHALL FILE A CERTIFICATE OF WORKERS COMPENSATION INSURANCE AND LIABILITY INSURANCE WITH THE COUNTY ENGINEER.

CONSTRUCTION NOTES:

- WORK SHALL BE CONSTRUCTED ACCORDING TO THE STANDARD SPECIFICATIONS FOR PUBLIC WORKS CONSTRUCTION (1976 EDITION) WITH 77-B SUPPLEMENTS AND COUNTY ENGINEER SPECIAL PROVISIONS FOR THE CONSTRUCTION OF SANITARY SEWERS DATED SECT. 8-12-76 AND SHALL BE PROSECUTED ONLY IN THE PRESENCE OF THE COUNTY ENGINEER.
- THE CONTRACTOR SHALL NOTIFY THE M.V. DEPT. DIVISION BY TELEPHONE, (818) 974-7283, AT LEAST TWENTY-FOUR HOURS BEFORE STARTING ANY WORK UNDER THIS CONTRACT.
- HOUSE LATERALS TO BE CONSTRUCTED WITH INVERTS AT PROPERTY LINE 6 FEET BELOW CURB GRADE EXCEPT AS NOTED.
- WYE OR TEE BRANCHES MAY BE USED FOR CONNECTIONS TO MAINLINE SPWERS EXCEPT AS NOTED.
- ALL STRUCTURES SHALL BE EITHER BRICK MANHOLES PER S-3 OR PRECAST CONCRETE MANHOLES PER S-34, CASE II, TWO FEET ON EACH SIDE FROM THE POINT OF INTERFERENCE.
- PROVIDE STAKES ON THE PROPERTY LINE OR PROPERTY LINES PRODUCE AT RIGHT ANGLES TO THE SEWER LINE AT THE CENTER LINE OF EACH MANHOLE.
- MANHOLE TOPS IN UNIMPROVED RIGHTS OF WAY TO BE SIX INCHES ABOVE FINISHED GRADE.
- VITRIFIED CLAY PIPE JOINTS SHALL BE TYPE "D", "F", OR "G" PER STANDARD SPECIFICATIONS SECTION 308-2.
- IF A POWER POLE IS WITHIN THREE FEET OF THE SEWER, THE SEWER SHALL BE ENCASED, PER S-23, CASE II, TWO FEET ON EACH SIDE FROM THE POINT OF INTERFERENCE.
- IF DURING THE COURSE OF CONSTRUCTION IT IS DETERMINED THAT THERE IS LESS THAN FOUR FEET OF COVER OVER THE TOP OF A MAIN LINE OR HOUSE LATERAL V.C.P. SEWER WHICH IS NOT INDICATED ON THE PLANS, THE PIPE SHALL BE ENCASED PER S-23, CASE II UNLESS OTHERWISE APPROVED BY THE COUNTY ENGINEER.
- ALL JOINTS BETWEEN CAST IRON PIPE AND VITRIFIED CLAY PIPE SHALL BE MADE WITH A RUBBER SLEEVE JOINT, TYPE "C" OR "B", WITHIN MEETING IF NECESSARY PER STANDARD SPECIFICATIONS, SECTION 308-2.
- SEWERAGE TO BE INSTALLED TO SLOPE PER SECTION 308-4 OF THE STANDARD SPECIFICATIONS AND SPECIAL PROVISIONS.
- RESURFACE ALL TRENCHES WITHIN PAVED AREAS TO MEET L.A. COUNTY ROAD DEPT. OR CALIFORNIA STATE HIGHWAY REQUIREMENTS IN ACCORDANCE WITH PERMITS.
- FULL COMPLIANCE WITH SECTION 308-6.6 OF THE SPECIAL PROVISIONS WILL BE REQUIRED FOR BACKFILL IN STREETS. CERTIFICATION OF BACKFILL COMPACTION AND SAND EQUIVALENTS BY A QUALIFIED, REGISTERED TESTING LABORATORY SHALL BE PROVIDED BY THE PERMITTEE PRIOR TO THE ISSUANCE OF A CERTIFICATE OF PARTIAL ACCEPTANCE.
- THE CONTRACTOR SHALL NOTIFY L.V.M.W.D. 26 HOURS PRIOR TO MAKING CONNECTION TO EXIST. TRUNK SEWER.

THE FOLLOWING LATEST REVISED STANDARD PLANS ON FILE IN THE OFFICE OF THE COUNTY ENGINEER SHALL APPLY IN THE CONSTRUCTION OF THIS PROJECT:

| SECTION | DESCRIPTION |
|---------|---|
| S-1 | LEGEND |
| S-2 | MINIMUM PUBLIC SAFETY REQUIREMENTS |
| S-3 | BRICK MANHOLE |
| S-7 | STANDARD MANHOLE STEP |
| S-17 | BEDDING FOR SEWER PIPE |
| S-28 | CLADDING AND ENCASEMENT |
| S-29 | WYE OR TEE SUPPORT |
| S-30 | ALLOWABLE TRENCH WIDTHS |
| S-31 | LOCKING MANHOLE FRAME AND COVER |
| S-32 | NON-REINFORCED PRECAST CONCRETE MANHOLE |
| S-34 | ANCHOR BLOCKS |
| S-35 | EROSION PROTECTION IN STEEP SLOPES |
| S-37 | CHIMNEY PIPE & BASE |

COUNTY OF LOS ANGELES, CALIFORNIA

STEPHEN J. KOONCE COUNTY ENGR. LAS VIRGINAS MUNICIPAL WATER DISTRICT

APPROVED: [Signature] DATE: 4-18-79 APPROVED: [Signature] DATE: 12/10/78

REG. C. E. NO. 12653 DATE: 4/15/74

CHECKED: [Signature] DATE: 4/15/74

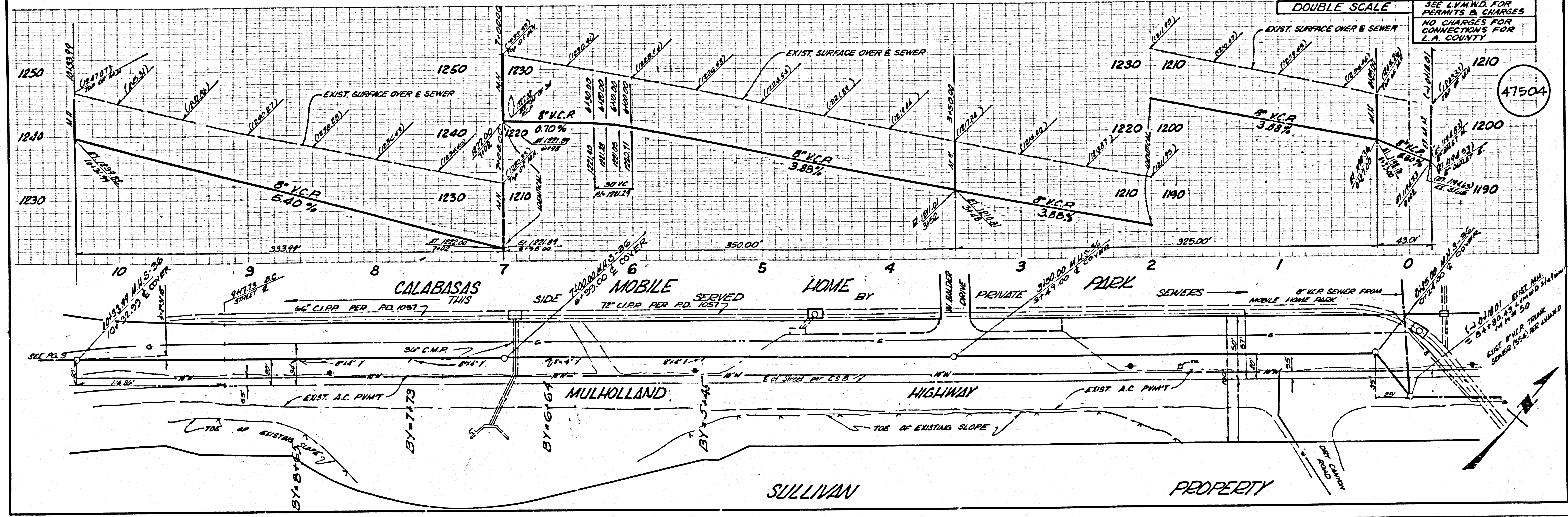
CALABASAS BLDG. DIST. 91 I.N.0358.01

PRIOR TO ISSUANCE OF A PLUMBING PERMIT, SEE L.V.M.W.D. FOR SEWER CONNECTION CHARGES.

P.C. 9480 PAGE 2

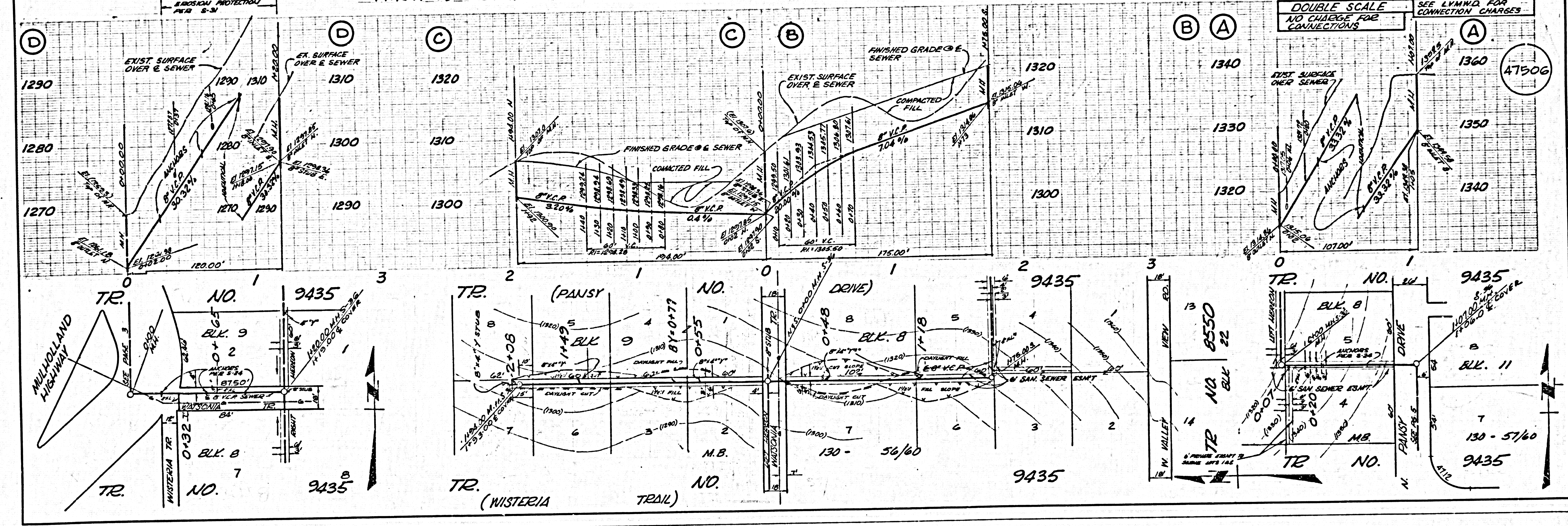
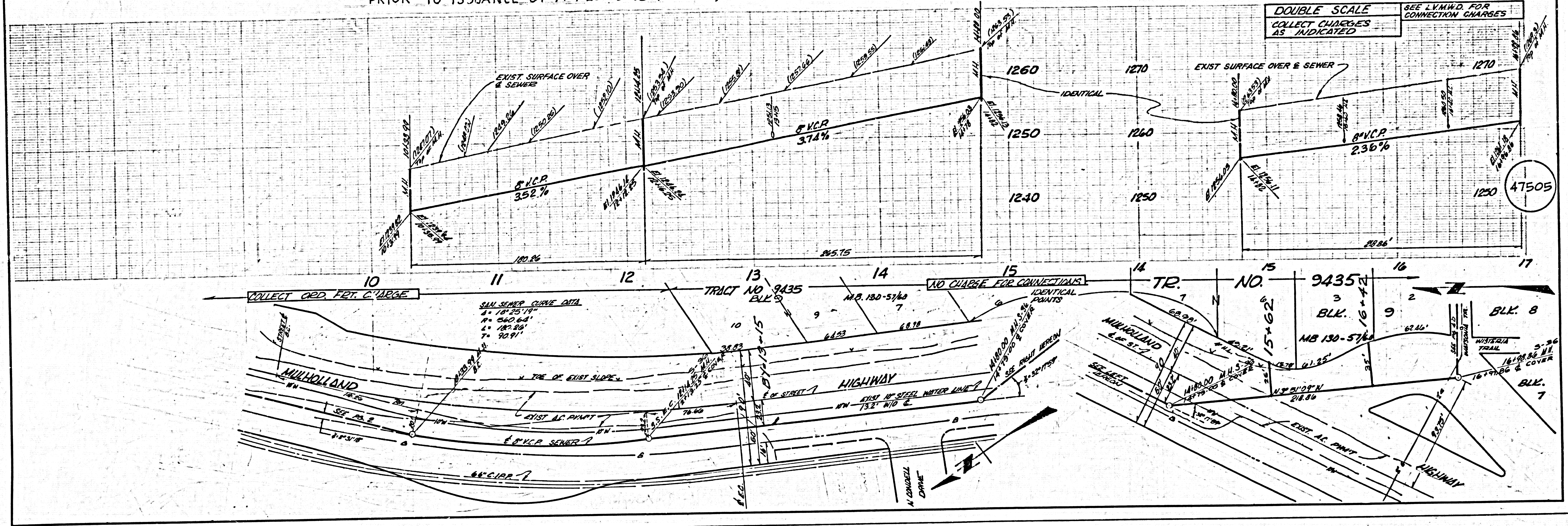
DOUBLE SCALE

SEE L.V.M.W.D. FOR PERMITS & CHARGES NO CHARGES FOR CONNECTIONS FOR L.A. COUNTY



47504

w/0 297-106

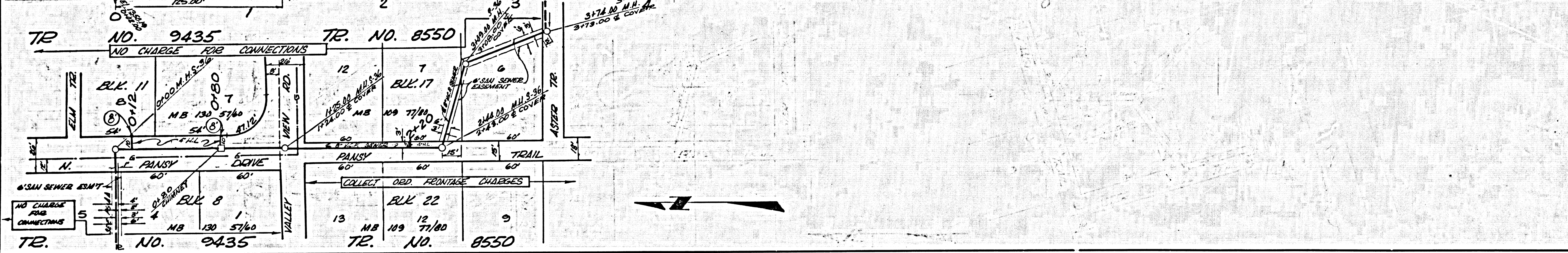
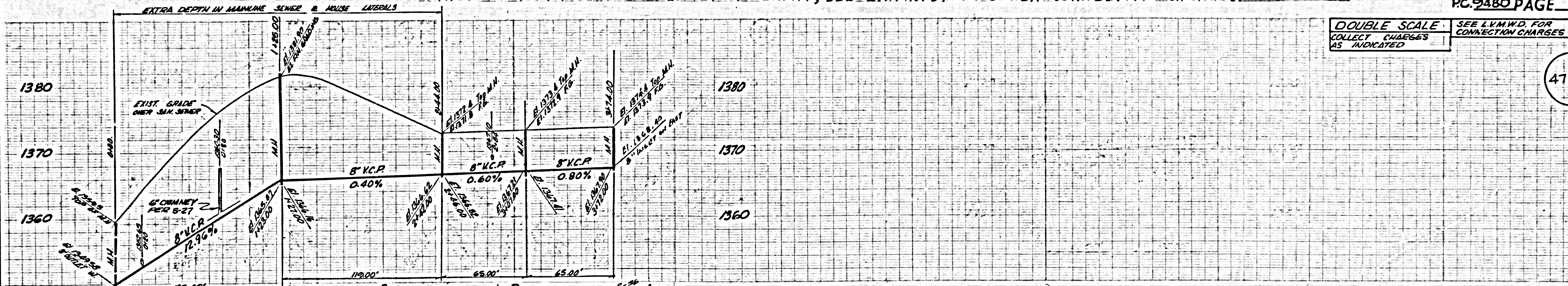


PRIOR TO ISSUANCE OF A PLUMBING PERMIT, SEE L.V.M.W.D. FOR SEWER CONNECTION CHARGES.

PC 9480 PAGE 5

DOUBLE SCALE
COLLECT CHARGES AS INDICATED
SEE L.V.M.W.D. FOR CONNECTION CHARGES

47507



PRIOR TO ISSUANCE OF A PLUMBING PERMIT, SEE L.V.M.W.D. FOR SEWER CONNECTION CHARGES.

PC 9480 PAGE 6

DOUBLE SCALE
NO CHARGE FOR CONNECTIONS
SEE L.V.M.W.D. FOR CONNECTION CHARGES

47508

