

B.M. BY 1554 ELEV. 928.207
 ROAD DEPARTMENT BENCHMARK TAG C SOUTH
 OF CURVE AT SOUTHEAST CORNER
 RIGGS, ADJACENT ROAD OVER CROSSING WEST
 BOUND ON-OFF RAMP VENTURA HWY. 40' 50" W
 MALIBU QUAD. 1972. EAST OF A
 INTERSECTION

NOTE:
 DUE TO EXTREMELY SHALLOW SEWERS IN
 PORTIONS OF THIS PROJECT, A CONSTRUCTION
 PERMIT WILL NOT BE ISSUED UNTIL SANITATION
 DIVISION HAS REVIEWED THE FINAL APPROVED
 ROAD PLANS.

GENERAL NOTES:
 1. SEWERAGE IS TO BE ABOVE U.S.C. & G.S. 81.5 GRADE BATHS OF 1965.
 2. NO SEWERAGE SHALL BE MADE ON THESE PLANS WITHOUT THE APPROVAL OF THE COUNTY ENGINEER.
 3. THE SEWERAGE PART OF THE COUNTY ENGINEER'S REVIEW IS LIMITED TO THE SEWERAGE PART OF THE PLANS.
 4. GRADES TO WHICH THIS IMPROVEMENT IS TO BE CONSTRUCTED ARE SHOWN ON THESE PLANS AND PROPOSED GRADE POINTS FOR TOP OF CURVE, CENTER LINE OF STREET, OR CENTER LINE OF ALLEY OR CURVES OR POINTS AT ALL POINTS BETWEEN BENCH MARK POINTS THE GRADE SHALL BE ESTABLISHED SO AS TO CONFORM TO A STRAIGHT LINE BETWEEN SAID BENCHMARK POINTS.
 5. THE PRIVATE ENGINEER SHALL PROVIDE THE COUNTY ENGINEER WITH GRAB SAMPLES AND STATIONING FOR ALL HOUSE LATERALS AND "T" OR "Y" BRANCHES AND SHALL PROVIDE GRADE FOR THEM AT THESE PROPER LOCATIONS WITH STATIONING PLANNED THEREON. ALL HOUSE LATERALS SHALL BE CONSTRUCTED AS A STRAIGHT ALIGNMENT AT POINT ANGLES FROM THE MAIN LINE SEWER EXCEPT AS SHOWN ON THESE PLANS. HOUSE LATERALS FROM CHIMNEYS SHALL HAVE AN ANGLE OF 45° FROM THE MAIN LINE SEWER AND CHIMNEYS OR ANCHORS SHALL BE PROVIDED IN ACCORDANCE WITH THE PRIVATE ENGINEER'S DESIGN.
 6. THE PRIVATE ENGINEER SHALL FURNISH THE HOUSE LATERAL BENCH MARK AT THE PROPERTY LINE SHOWING THE TOP OF CURB REPAIR FOR EACH HOUSE LATERAL ON THE GRADE SHEET.
 7. BEFORE WORK CAN BE STARTED, THE CONTRACTOR MUST OBTAIN A PERMIT TO EXCAVATE IN COUNTY STREETS FROM THE L.A. COUNTY ROAD DEPT. DISTRICT OFFICE AND A PERMIT TO EXCAVATE IN PRIVATE PROPERTY FROM THE COUNTY ENGINEER.
 8. IF WORK IS TO BE DONE BY A STATE CONTRACTOR, A PERMIT MUST BE OBTAINED FROM THE STATE OF CALIFORNIA, DIVISION OF HIGHWAYS, THE BOARD OF SUPERVISORS, LOS ANGELES, CALIFORNIA.
 9. APPROVAL OF THESE PLANS BY THE COUNTY OF LOS ANGELES DOES NOT CONSTITUTE A REPRESENTATION AS TO THE ACCURACY OF THE LOCATION OF OR THE EXISTENCE OR NON-EXISTENCE OF ANY UNDERGROUND UTILITY PIPE, OR STRUCTURE WITHIN THE LIMITS OF THIS PROJECT. THIS NOTE APPLIES TO ALL PAGES.
 10. REFER TO SECTION 1-6.1 OF THE STANDARD SPECIFICATIONS, BRIDGING DIVISION.
 11. THE UNDERGROUND UTILITY COMPANIES WITHIN THE LIMITS OF THIS PROJECT ARE AS FOLLOWS:
 NONE
 12. PRIOR TO RESUMPTION OF THE APPROVED SEWER CONSTRUCTION PERMIT BY THE COUNTY ENGINEER, THE CONTRACTOR SHALL OBTAIN A PERMIT TO EXCAVATE FROM THE STATE OF CALIFORNIA DIVISION OF INDUSTRIAL SAFETY.

PROFILE, ALIGNMENT AND GRADE OF
SANITARY SEWERS PAGE 1

TO BE CONSTRUCTED IN
 TRACT NO. 33255
 PRIVATE CONTRACT NO. 9481

W.S. 93 D-1
 4 SHEETS, 7 PAGES
 SCALE: HORIZ. 1" = 40' VERT. 1" = 4'
 DECEMBER, 1977
 PREPARED IN THE OFFICES OF
 STEPHEN J. RODRIGUE & ASSOCIATES
 11250 BOULDER BLVD., 48061788
 VAN NUYS, CALIFORNIA 91411
 BY: *Stephen J. Rodrigue*
 REG. C.E. No. 41233

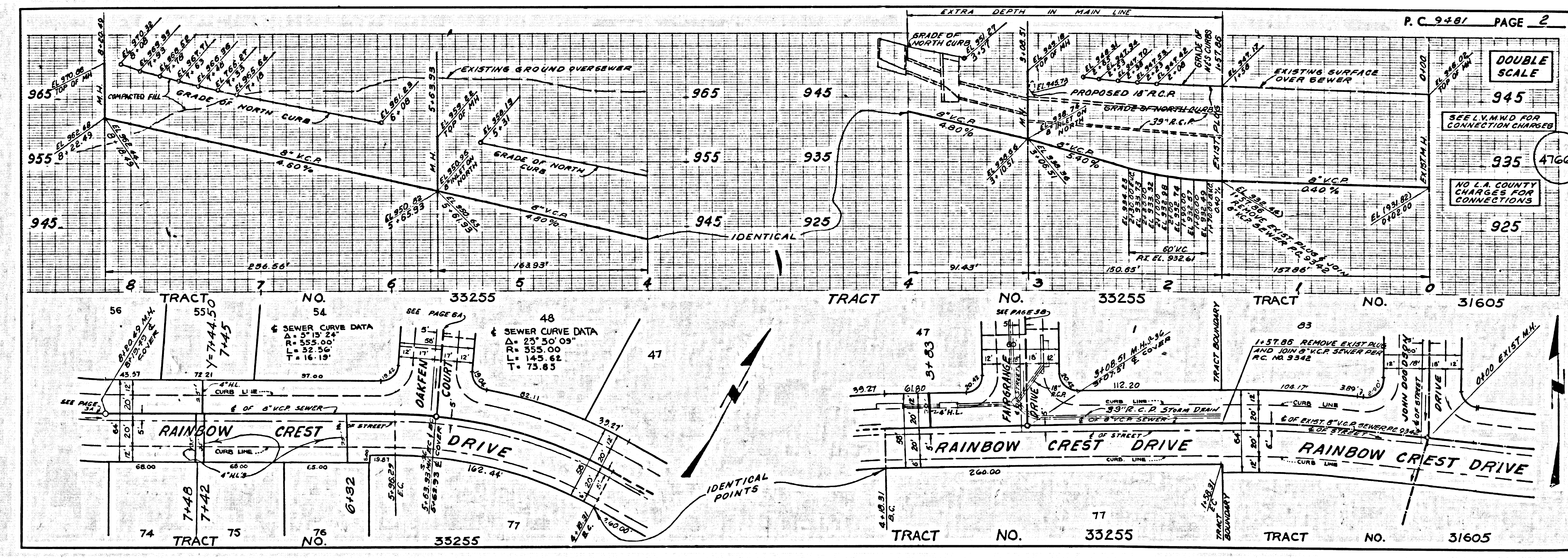
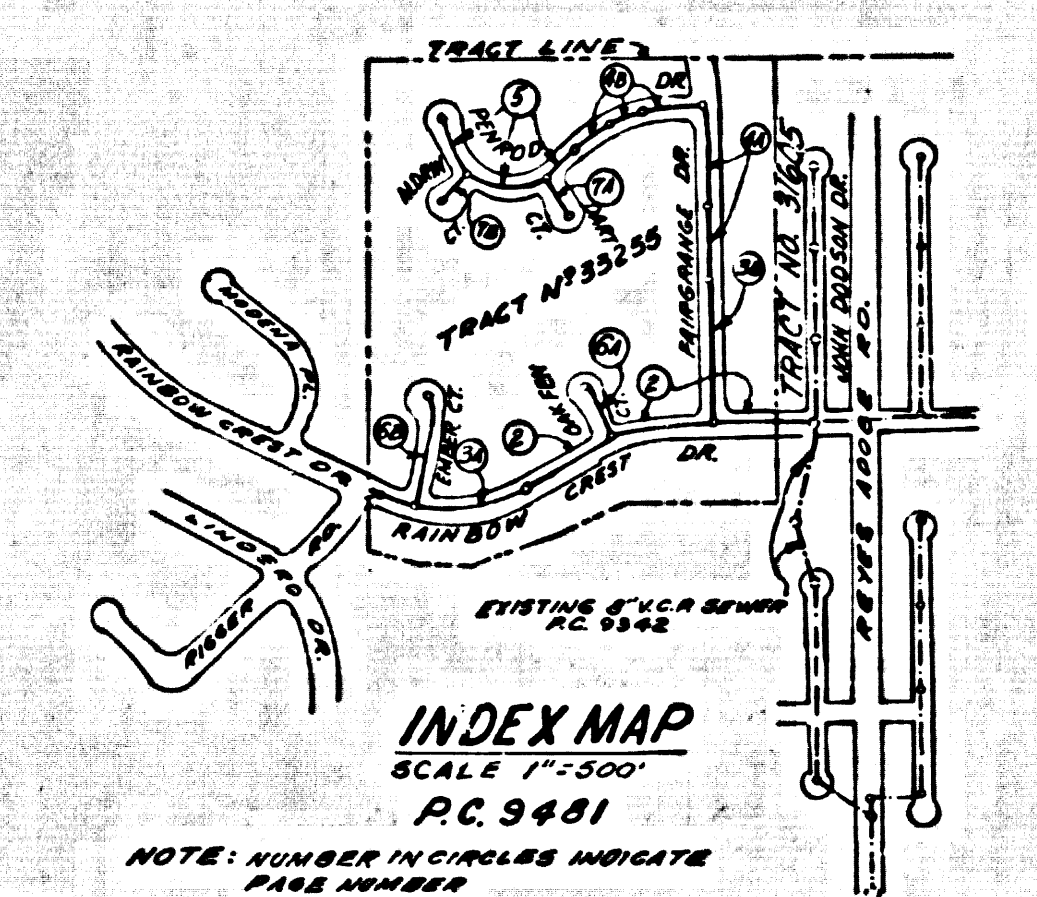
THE FOLLOWING LISTS SET FORTH STANDARD PLANS ON FILE IN THE OFFICE OF THE COUNTY ENGINEER SHALL APPLY IN THE CONSTRUCTION OF THIS PROJECT:

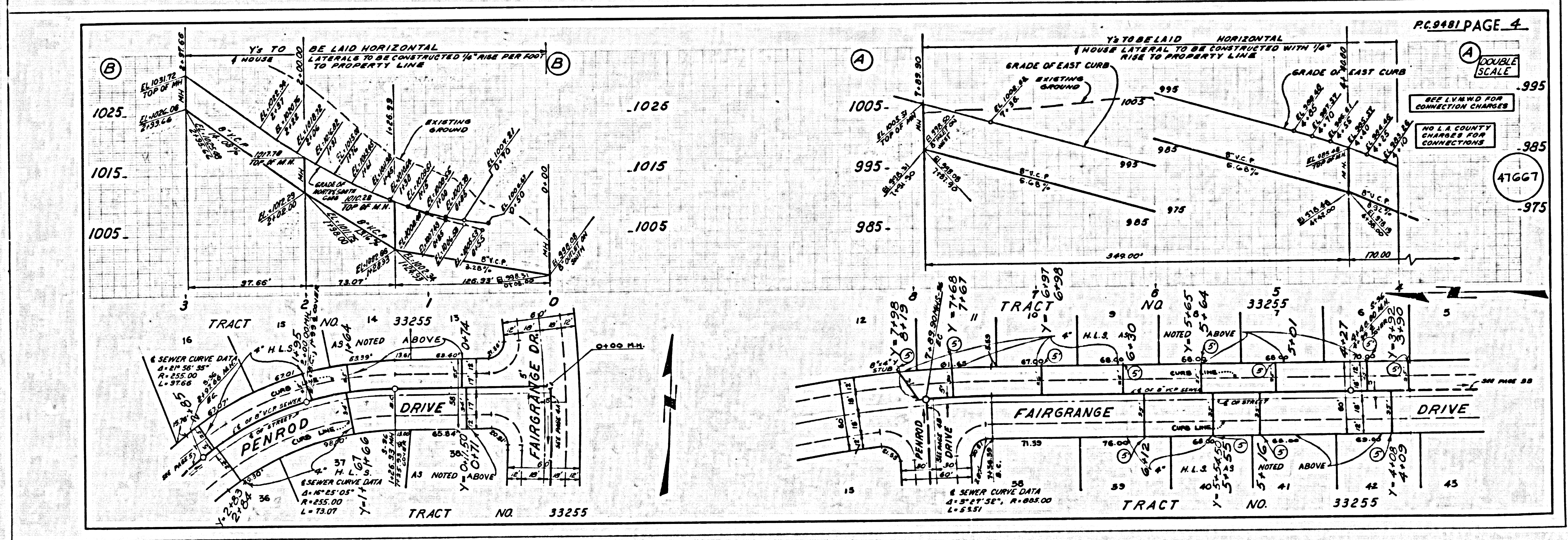
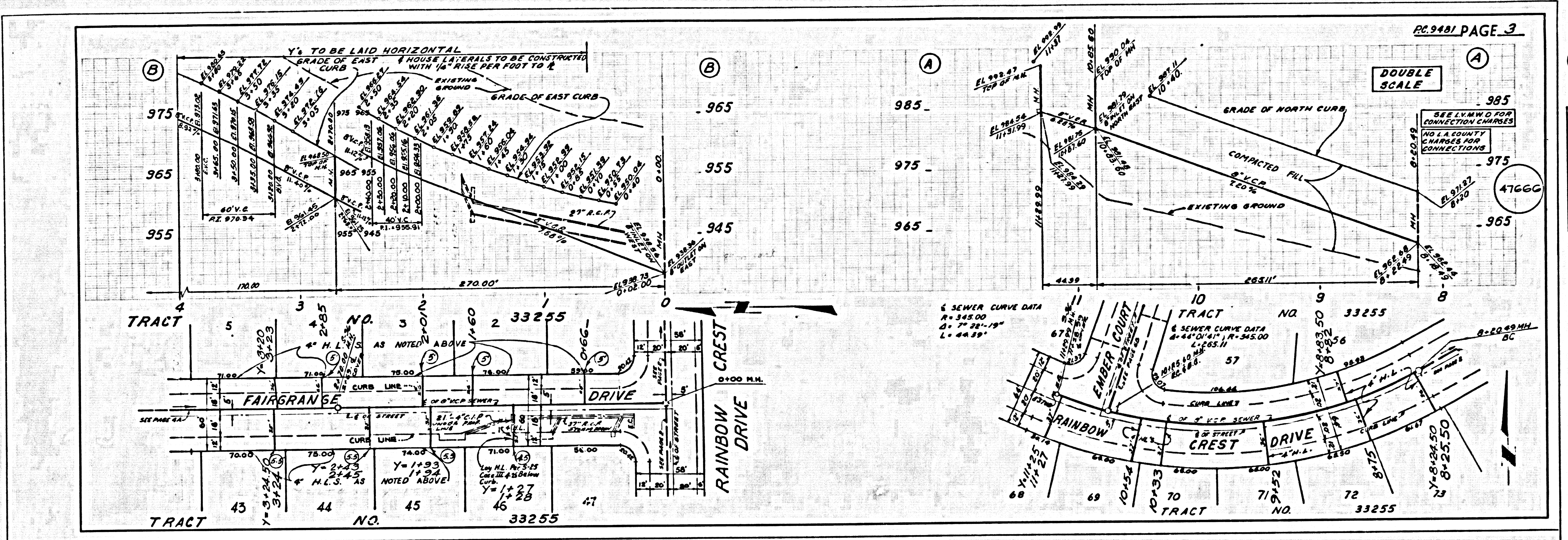
SEWER	1.00
SEWERAGE PUBLIC SAFETY REQUIREMENTS	1.00
BRICK MANHOLE	1.00
STANDARD MANHOLE RING	1.00
CHANGING AND BRICKWORK	1.00
WPT ON THE SURFACE	1.00
ALLOWABLE TRUNCATION	1.00
SEWER MANHOLE PLANS AND COVERS	1.00
NON-STRUCTURED PRECAST CONCRETE MANHOLE	1.00

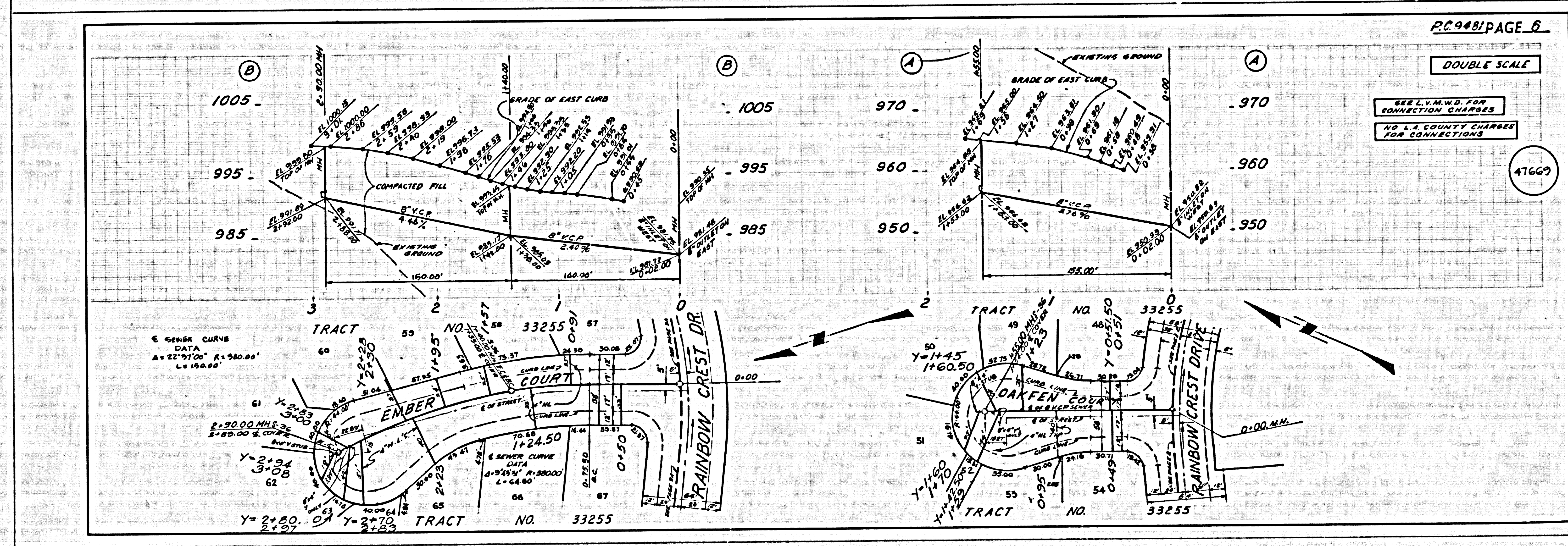
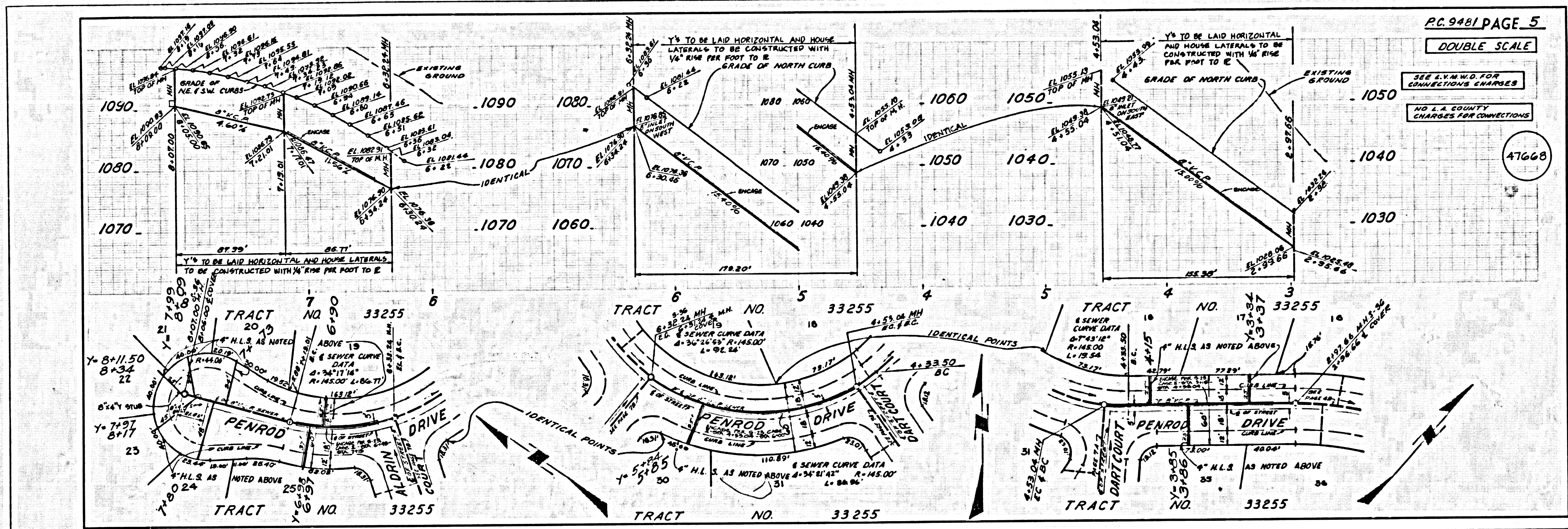
COUNTY OF LOS ANGELES, CALIFORNIA
 STEPHEN J. RODRIGUE, COUNTY ENGINEER, LINE VENDOR'S ANNUAL WATER DISTRICT
 APPROVED: *Stephen J. Rodrigue* DATE: 12/11/77
 CHECKED: *John C. Kelly* DATE: 12/11/77
 CALADABAR BLDG. DIST. 51 J.N. 0750.02

REVISION NO. 1 DATE: July 31, 1977
 PAGE 2: (1) ADDED STORM DRAIN IN PLAN & PROFILE
 (2) ADDED "T" FOR LOT 47.
 PAGE 3: (1) DELETED H.L. FOR LOT 47 ADDED STORM
 DRAIN IN PLAN & PROFILE. MOVE H.L. FOR
 LOT 46 & 47 ADDED NOTE FOR H.L. FOR LOT 46.
 APPROVED: *Ralph Davis* DATE: 7/31/77 16883
 OFFICE OF COUNTY ENGINEER I.E. NO.

REVISION NO. 2 DATE: 9/10/77
 PAGE 3: (1) LOWER SEWER LINE APPROX. 1.0' ON
 PURCHASE DRIVE FROM STA. 2100.00 TO
 STA. 4900.00
 PAGE 4: (1) LOWER SEWER LINE APPROX. 1.0' ON PURCHASE
 DRIVE FROM STA. 4900.00 TO STA. 7189.90
 (2) LOWER SEWER LINE APPROX. 1.0' TO 0.0'
 ON PENROD DRIVE FROM STA. 0100 TO STA. 1126.99
 APPROVED: *Ralph Davis* DATE: 9/10/77 16883
 OFFICE OF COUNTY ENGINEER I.E. NO.



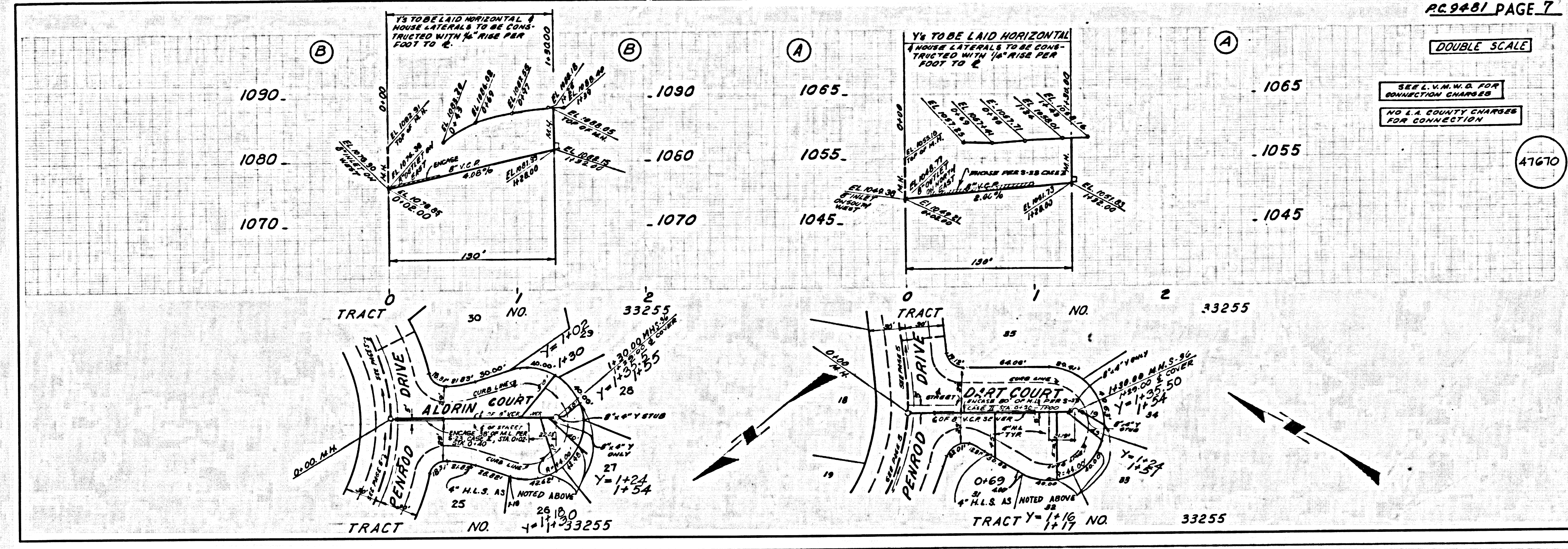




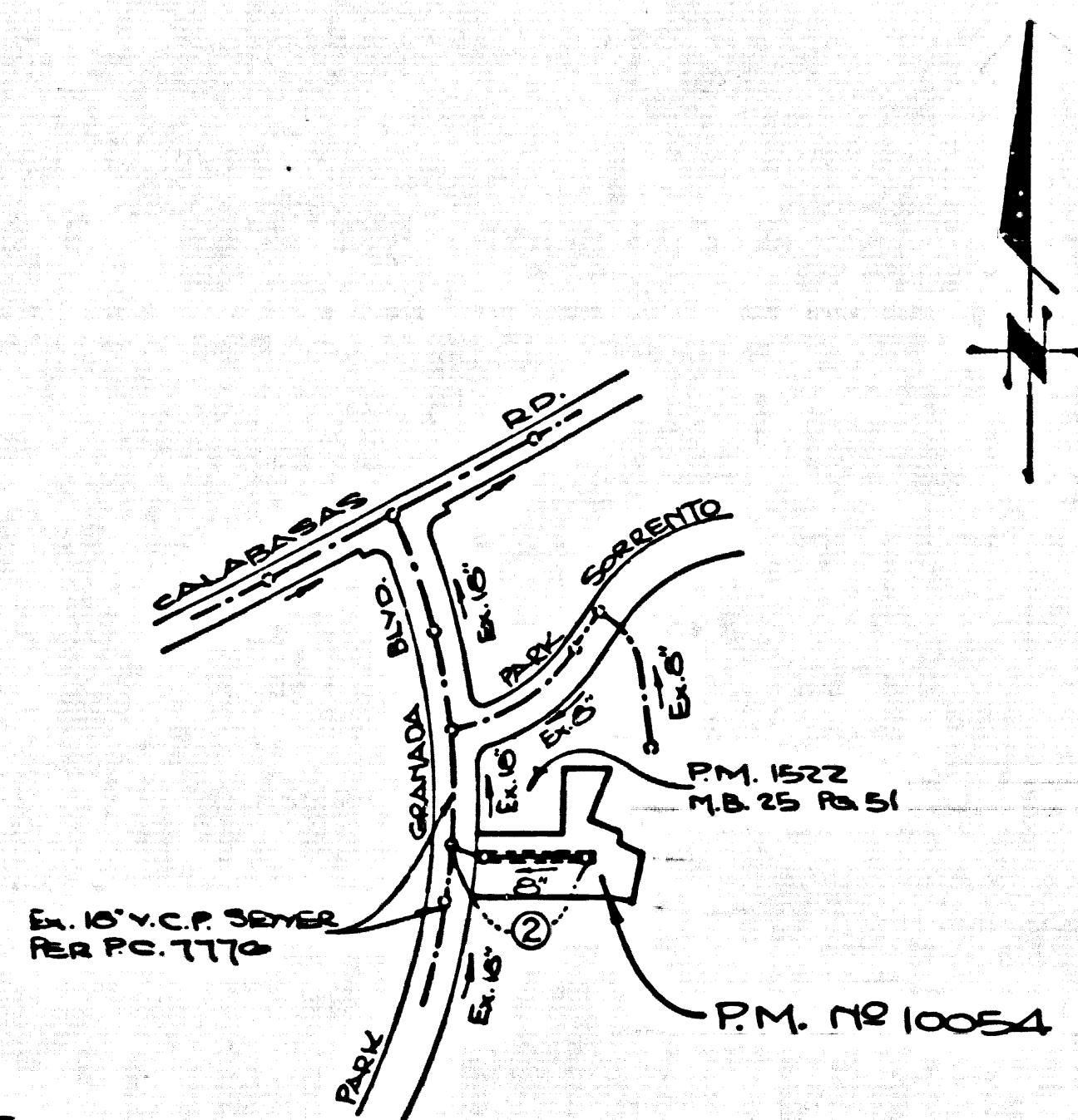
DOUBLE SCALE

SEE L.V.M.W.D. FOR CONNECTION CHARGES
NO L.A. EQUITY CHARGES FOR CONNECTION

47670



B.M. BY 1540A ELEV. 1135.511
 RD BY TAG 3 END BRIDGE 531681
 OVER VENTURA FRY @ NE COR
 CALABASAS RD + MUREAU RD 60 FT
 N+21 FT E 2 INT
 MALIBU QUAD. 1972



NOTE: NUMBER IN CIRCLE
 INDICATES PAGE NUMBER.

INDEX MAP
 SCALE: 1"=600'
 P.C. 9482

PRIVATE ENGINEERS NOTICE TO CONTRACTORS

The existence and location of any underground utility pipes or structures shown on these plans are obtained by search of the available records. To the best of our knowledge there are no existing utilities except as shown on these plans. The contractor is required to take due precautionary measures to protect the utility lines shown and any other lines not of record or not shown on these plans.

John Lawrence
 Registered Engineer R.C.E.

GENERAL NOTES:

- ELEVATIONS ARE IN FEET ABOVE U.S.C. & G.S. SEA LEVEL DATUM OF 1929.
- NO REVISIONS SHALL BE MADE IN THESE PLANS WITHOUT THE APPROVAL OF THE COUNTY ENGINEER.
- NO REPRESENTATIVE OF THE COUNTY ENGINEER WILL SURVEY OR LAY OUT ANY PORTION OF THE WORK.
- GRADES TO WHICH THIS IMPROVEMENT IS TO BE CONSTRUCTED ARE SHOWN ON PLANS AND PROFILES. GRADE POINTS FOR TOP OF CURBS, CENTER LINE OF STREETS, OR CENTER LINE OF ALLEYS ARE SHOWN BY CIRCLES ON PROFILES. AT ALL POINTS BETWEEN DESIGNATED POINTS THE GRADE SHALL BE ESTABLISHED SO AS TO CONFORM TO A STRAIGHT LINE DRAWN BETWEEN SAID DESIGNATED POINTS.
- THE PRIVATE ENGINEER SHALL FURNISH THE COUNTY ENGINEER WITH GRADE SHEETS AND STATIONING FOR ALL HOUSE LATERALS AND "T" OR "Y" BRANCHES AND SHALL PROVIDE STAKES FOR THEM AT THESE PROPER LOCATIONS WITH STATIONING PLAINLY MARKED. ALL HOUSE LATERALS SHALL BE CONSTRUCTED IN A STRAIGHT ALIGNMENT AT RIGHT ANGLES FROM THE MAIN LINE SEWER EXCEPT AS SHOWN ON THE PLANS. HOUSE LATERALS FROM CHIMNEYS SHALL NOT HAVE AN ANGLE OF LESS THAN 45° WITH THE MAIN LINE SEWER. ANY CHANGE IN ALIGNMENT SHALL BE REQUESTED IN WRITING BY THE PRIVATE ENGINEER.
- THE PRIVATE ENGINEER SHALL FURNISH THE HOUSE LATERAL DEPTH AT THE PROPERTY LINE BELOW THE TOP OF CURB ELEVATION FOR EACH HOUSE LATERAL ON THE GRADE SHEET.
- BEFORE WORK CAN BE STARTED, THE CONTRACTOR MUST OBTAIN A PERMIT TO EXCAVATE IN COUNTY STREETS FROM THE L.A. COUNTY ROAD DEPT., DISTRICT OFFICE NO. 2, AND PAY A FEE TO THE COUNTY ENGINEER, AT THE MALIBU REGIONAL OFFICE, TO COVER THE COST OF CONSTRUCTION INSPECTION AND RECORD PLANS.
- IF WORK IS TO BE DONE IN A STATE HIGHWAY, A PERMIT MUST BE OBTAINED FROM THE STATE OF CALIFORNIA, DIVISION OF HIGHWAYS, 128 SOUTH SPRING STREET, LOS ANGELES, CALIFORNIA.
- APPROVAL OF THIS PLAN BY THE COUNTY OF LOS ANGELES DOES NOT CONSTITUTE A REPRESENTATION AS TO THE ACCURACY OF THE LOCATION OF OR THE EXISTENCE OR NON-EXISTENCE OF ANY UNDERGROUND UTILITY PIPE, OR STRUCTURE WITHIN THE LIMITS OF THIS PROJECT. THIS NOTE APPLIES TO ALL PAGES.
- REFER TO SECTION 7.18.4.1 OF THE STANDARD SPECIFICATIONS, REGARDING SAFETY ORDERS.
- PRIOR TO ISSUANCE OF THE DESIRED SEWER CONSTRUCTION PERMIT BY THE COUNTY ENGINEER, THE CONTRACTOR SHALL OBTAIN A PERMIT TO EXCAVATE FROM THE "OFFICE OF CALIFORNIA DIVISION OF INDUSTRIAL SAFETY."
- THE UNDERGROUND UTILITY COMPANIES WITHIN THE LIMIT OF THIS PROJECT ARE AS FOLLOWS:
 1. S. CALIF. EDISON 000-3036
 2. PACIFIC TELEPHONE 000-0000
 3. LAS VIRGENES MUN. WATER DIST. 000-4110
 4. S. CALIF. GAS 003-0208

CONSTRUCTION NOTES:

- WORK SHALL BE CONSTRUCTED ACCORDING TO THE STANDARD SPECIFICATIONS FOR PUBLIC WORKS CONSTRUCTION (1976 EDITION) AND COUNTY ENGINEER SPECIAL PROVISIONS FOR THE CONSTRUCTION OF SANITARY SEWERS DATED SEPT. 21, 1975 AND SHALL BE PROSECUTED ONLY IN THE PRESENCE OF THE COUNTY ENGINEER.
- THE CONTRACTOR SHALL NOTIFY THE CHIEF OF DIVISION BY TELEPHONE (213) 974-7255 AT LEAST TWENTY-FOUR HOURS BEFORE STARTING ANY WORK UNDER THIS CONTRACT.
- HOUSE LATERALS TO BE CONSTRUCTED WITH INVERTS AT PROPERTY LINE 6 FEET BELOW CURB GRADE EXCEPT AS NOTED.
- WYE OR TEE BRANCHES MAY BE USED FOR CONNECTIONS TO MAINLINE SEWERS EXCEPT AS NOTED.
- ALL STRUCTURES SHALL BE EITHER BRICK MANHOLES PER S-3 OR PRECAST CONCRETE MANHOLES PER S-36, EXCEPT AS NOTED.
- PROVIDE STAKES ON THE PROPERTY LINE OR PROPERTY LINES PRODUCE AT RIGHT ANGLES TO THE SEWER LINE AT THE CENTER LINE OF EACH MANHOLE.
- MANHOLE TOPS IN IMPROVED RIGHTS OF WAY TO BE 15" MIN. WITH FINISHED GRADE.
- VITRIFIED CLAY PIPE JOINTS SHALL BE TYPE "B", "F", OR "G" PER STANDARD SPECIFICATIONS SECTION 200-2.
- IF A POWER POLE IS WITHIN THREE FEET OF THE SEWER, THE SEWER SHALL BE ENCASED, PER S-23, CASE II, TWO FEET ON EACH SIDE FROM THE POINT OF INTERFERENCE.
- IF DURING THE COURSE OF CONSTRUCTION IT IS DETERMINED THAT THERE IS LESS THAN FOUR FEET OF COVER OVER THE TOP OF A MAIN LINE OR HOUSE LATERAL V.C.P. SEWER WHICH IS NOT INDICATED ON THE PLANS, THE PIPE SHALL BE ENCASED PER S-23, CASE II UNLESS OTHERWISE APPROVED BY THE COUNTY ENGINEER.
- ALL JOINTS BETWEEN CAST IRON PIPE AND VITRIFIED CLAY PIPE SHALL BE MADE WITH A RUBBER SLEEVE JOINT, TYPE "C" OR "D", WITH BUSHING IF NECESSARY PER STANDARD SPECIFICATIONS, SECTION 200-2.
- SEWERS TO BE TESTED FOR LEAKAGE PER SECTION 206-L-4 OF THE STANDARD SPECIFICATIONS AND SPECIAL PROVISIONS.
- RESURFACE ALL TRENCHES WITHIN PAVED AREAS TO MEET L.A. COUNTY ROAD DEPT. OR CALIFORNIA STATE HIGHWAY REQUIREMENTS IN ACCORDANCE WITH PERMITS.
- FULL COMPLIANCE WITH SECTION 206-L-5 OF THE SPECIAL PROVISIONS WILL BE REQUIRED FOR BACKFILL IN STREETS. CERTIFICATION OF BACKFILL COMPACTION AND SAND EQUIVALENTS BY A QUALIFIED, REGISTERED TESTING LABORATORY SHALL BE PROVIDED BY THE PERMITTEE PRIOR TO THE ISSUANCE OF A CERTIFICATE OF PARTIAL ACCEPTANCE.

DOUBLE SCALE

P.M. No 10054
PRIVATE CONTRACT NO. 9482

W.S. 60, B-4
 1 SHEET, 2 PAGES

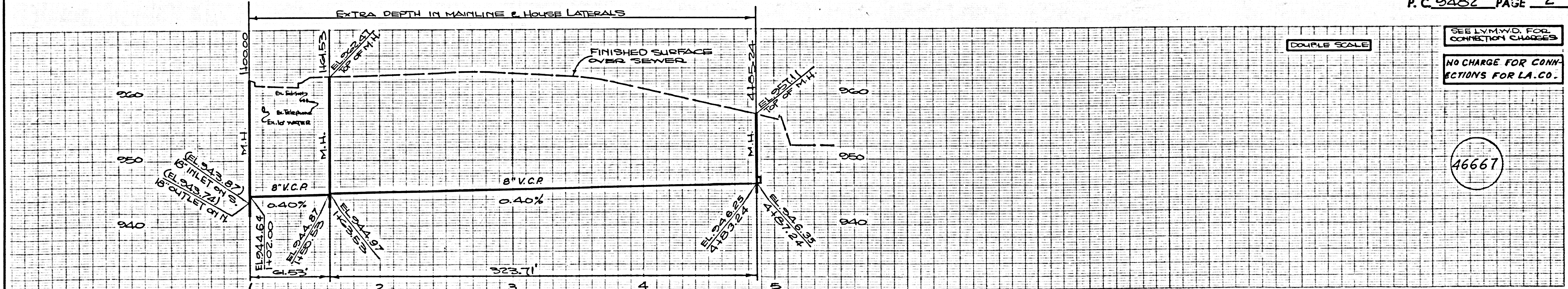
SCALE: VERT. 1"=6'
 HORIZ. 1"=60'
 NOVEMBER, 1977
 PREPARED IN THE OFFICES OF
 LIND & HILLEBRAND, INC.
 2025 HUNTINGTON DR.
 SAN MARINO, CALIF. 91088
 BY: *John Lawrence*
 REG. C.E. No. 12235

46666

THE FOLLOWING LATEST REVISED STANDARD PLANS ON FILE IN THE OFFICE OF THE COUNTY ENGINEER SHALL APPLY IN THE CONSTRUCTION OF THIS PROJECT.

LEGEND	S-1
MINIMUM PUBLIC SAFETY REQUIREMENTS	S-2
BRICK MANHOLE	S-3
STANDARD MANHOLE STOP	S-17
BEDDING FOR SEWER PIPE	S-21
CRADLING AND ENCASEMENT	S-23
WYE OR TEE SUPPORT	S-26
ALLOWABLE TRENCH WIDTHS	S-28
LOADING MANHOLE FRAME AND COVER	S-35
NON-REINFORCED PRECAST CONCRETE MANHOLE	S-36

COUNTY OF LOS ANGELES, CALIFORNIA
 STEPHEN J. KOONCE, ACTING COUNTY ENGINEER LAS VIRGENES MUNICIPAL WATER DISTRICT
 APPROVED *John Lawrence* 1/29/78 REGIONAL ENGINEER (DATE)
 APPROVED *Steve Stokes* 3/13/78 GENERAL MANAGER, CHIEF ENGINEER (DATE)
 CHECKED *James C. Thompson* 1/29/78 (DATE)
 REG. C.E. NO. 19763
 CALABASAS BLDG. DIST. 21 I.N. 025005



DOUBLE SCALE

SEE LVM.V.D. FOR CONNECTION CHARGES
 NO CHARGE FOR CONNECTIONS FOR L.A. CO.

46667

*NOTE: PRIOR TO CONSTRUCTION, PARK GRANADA BLVD. SURVEYOR TO NOTIFY ENGINEER IF ANY PART OF PROPOSED M.I.C. STA. 100 FALLS OUTSIDE OF MEDIAN ONTO CURB OR GUTTER

