

B.M. BL 3032 ELEV. 1151.280
USC + GS MON SW COR BRIDGE IS 710 18 FT
W C/L LAKE HUGHES RD + 0.2 MI N CASTAIC RD
HND (S 470 146 4)
NEWHALL QUAD. 1972

REVISION No. 1 Date 10-20-78
PAGE 3, REVISE PROFILE GRADE FROM STA. 12+89.62
TO STA 16+36.71, ADD SPECIAL SUPPORT AT STORM
DRAIN CROSSING BETWEEN STA. 14+46.30 TO 14+57.30
APPROVED *Maxine C. Murphy* 10/23/78
Office of County Engineer R.E. No. 18,574

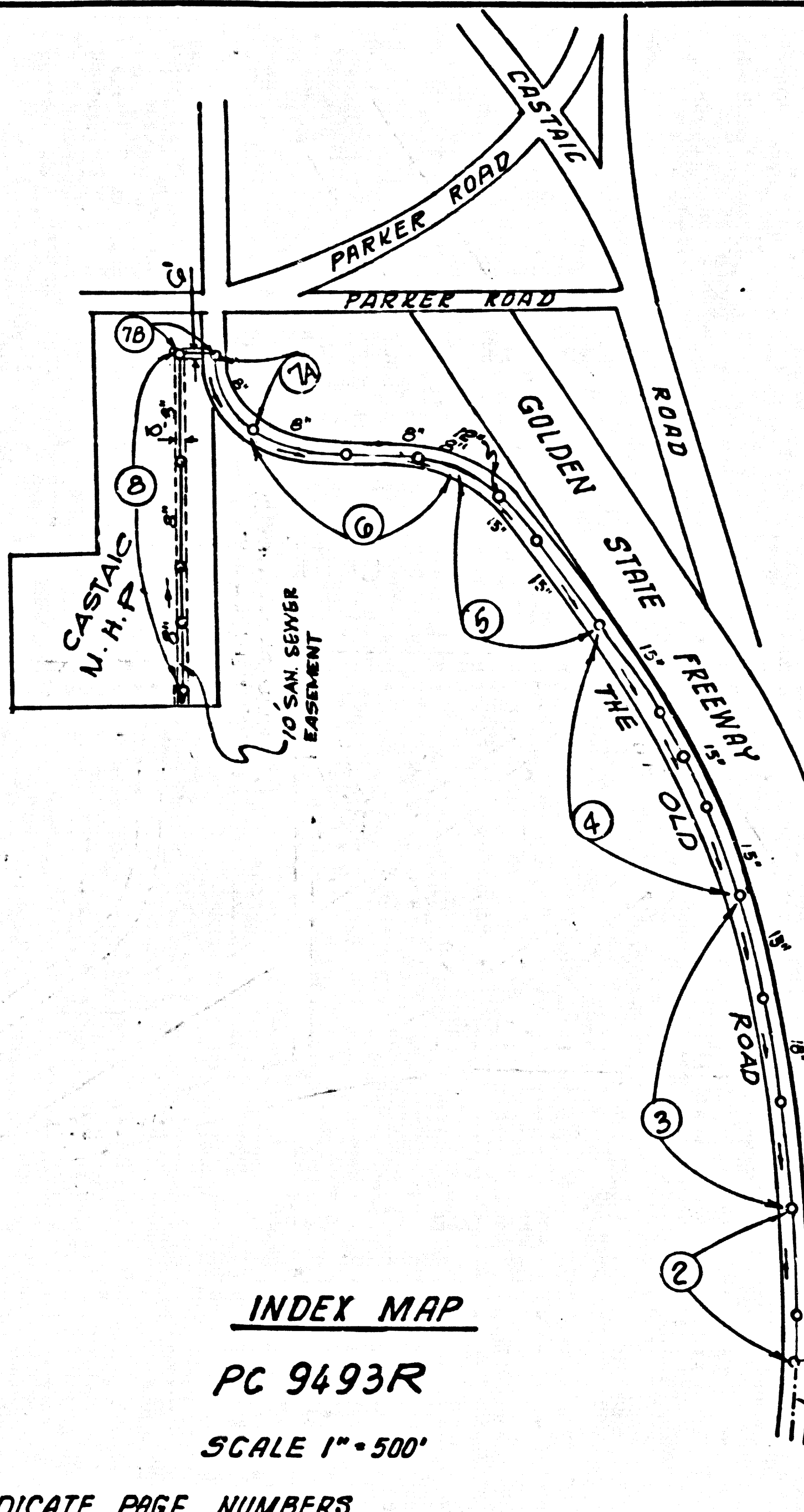
NO CONNECTION FOR THE DISPOSAL OF INDUSTRIAL WASTES
SHALL BE MADE TO SEWERS SHOWN ON THESE DRAWINGS UNTIL
A PERMIT FOR INDUSTRIAL WASTE WATER DISCHARGE HAS BEEN
ISSUED BY THE SANITATION DISTRICTS FOR SAID CONNECTION.

BEFORE BREAKING INTO OR CONSTRUCTION ON A COUNTY
SANITATION DISTRICT SEWER AND PRIOR TO FINAL ACCEPTANCE
OF THE PROJECT SANITATION DISTRICT HAS TO BE
NOTIFIED BY PHONE 932-3605 SJ THAT REQUIRED INSPECTION
CAN BE MADE.

PRIVATE ENGINEER'S
NOTICE TO CONTRACTOR

EXISTENCE AND LOCATION OF ANY UNDERGROUND UTILITY PIPES
STRUCTURES SHOWN ON THESE PLANS ARE OBTAINED BY A SEARCH
IN THE AVAILABLE RECORDS TO THE BEST OF OUR KNOWLEDGE THESE
ARE NOT EXISTING UTILITIES EXCEPT AS SHOWN ON THIS PLAN.
THE CONTRACTOR IS REQUIRED TO TAKE PRECAUTIONARY MEASURES
TO PROTECT THE UTILITY LINES SHOWN AND ANY OTHER LINES NOT
SHOWN OR NOT SHOWN ON THIS DRAWING.

NOTE: NUMBERS IN CIRCLES INDICATE PAGE NUMBERS



INDEX MAP

PC 9493R

SCALE 1" = 500'

NOTE:
THE CONTRACTOR SHALL START AND COMPLETE
THE CONSTRUCTION OF SEWER SHOWN ON PAGES
7-B AND 8 IN THE SHORTEST POSSIBLE TIME.
THE CONTRACTOR SHALL HAVE THE PRIVILEGE
OF STARTING OTHER WORK ON THIS PROJECT
IF THAT WORK DOES NOT INTERFERE WITH OR
DELAY THE WORK SHOWN ON PAGES 7-B AND 8.

A. NO CONSTRUCTION ON PAGES
7-B & 8 UNTIL SANITARY SEWER
EASEMENT IS CLEARED
B. ALLOW NO CONNECTIONS UNTIL
SANITARY SEWER EASEMENT
IS ACCEPTED FOR PUBLIC USE

EXIST. 15" VCP
CASTAIC TRUNK
SEWER SECTION 4
SAN. DIST. No 32

GENERAL NOTES:

- ELEVATIONS ARE IN FEET ABOVE U.S.C. & G.S. SEA LEVEL DATUM OF 1929.
- NO REVISIONS SHALL BE MADE IN THESE PLANS WITHOUT THE APPROVAL OF THE COUNTY ENGINEER.
- NO REPRESENTATIVE OF THE COUNTY ENGINEER WILL SURVEY OR LAY OUT ANY PORTION OF THE WORK.
- GRADES TO WHICH THIS IMPROVEMENT IS TO BE CONSTRUCTED ARE SHOWN ON PLANS AND PROFILES. GRADE POINTS FOR TOP OF CURBS, CENTER LINE OF STREETS, OR CENTER LINE C" ALLEYS ARE SHOWN BY CIRCLES ON PROFILES. AT ALL POINTS BETWEEN DESIGNATED POINTS THE GRADE SHALL BE ESTABLISHED AS TO CONFORM TO A STRAIGHT LINE DRAWN BETWEEN SAID DESIGNATED POINTS.
- THE PRIVATE ENGINEER SHALL FURNISH THE COUNTY ENGINEER WITH GRADE SHEETS AND STATIONING FOR ALL HOUSE LATERALS AND "T" OR "Y" BRANCHES AND SHALL PROVIDE STAKES FOR THEM AT THEIR PROPER LOCATIONS WITH STATIONING PLAINLY MARKED. ALL HOUSE LATERALS SHALL BE CONSTRUCTED IN A STRAIGHT ALIGNMENT AT RIGHT ANGLES FROM THE MAIN LINE SEWER EXCEPT AS SHOWN ON THE PLANS. HOUSE LATERALS FROM CHIMNEYS SHALL NOT HAVE AN ANGLE OF LESS THAN 45° WITH THE MAIN LINE SEWER. ANY CHANGE IN ALIGNMENT SHALL BE REQUESTED IN WRITING BY THE PRIVATE ENGINEER.
- THE PRIVATE ENGINEER SHALL FURNISH THE HOUSE LATERAL DEPTH AT THE PROPERTY LINE BELOW THE TOP OF CURB ELEVATION FOR EACH HOUSE LATERAL ON THE GRADE SHEET.
- BEFORE WORK CAN BE STARTED, THE CONTRACTOR MUST OBTAIN A PERMIT TO EXCAVATE IN CITY STREETS FROM THE L.A. COUNTY ROAD DEPT., DISTRICT OFFICE NO. 46 ... AND PAY A FEE TO THE COUNTY ENGINEER, SANTA CLARITA VALLEY REGIONAL OFFICE, TO COVER THE COST OF CONSTRUCTION INSPECTION AND RECORD PLANS.
- IF WORK IS TO BE DONE IN A STATE HIGHWAY, A PERMIT MUST BE OBTAINED FROM THE STATE OF CALIFORNIA, DIVISION OF HIGHWAYS, 130 SOUTH SPRING STREET, LOS ANGELES, CALIFORNIA.
- APPROVAL OF THIS PLAN BY THE COUNTY OF LOS ANGELES DOES NOT CONSTITUTE A REPRESENTATION AS TO THE ACCURACY OF THE LOCATION OF OR THE EXISTENCE OR NON-EXISTENCE OF ANY UNDERGROUND UTILITY PIPE, OR STRUCTURE WITHIN THE LIMITS OF THIS PROJECT. THIS NOTE APPLIES TO ALL PAGES.
- REFER TO SECTION 7-10.4.3 OF THE STANDARD SPECIFICATIONS, REGARDING SAFETY ORDERS.
- PRIOR TO ISSUANCE OF THE REQUIRED SEWER CONSTRUCTION PERMIT BY COUNTY ENGINEER, THE CONTRACTOR SHALL OBTAIN A PERMIT TO EXCAVATE FROM THE STATE OF CALIFORNIA, DIVISION OF INDUSTRIAL SAFETY.
- PRIOR TO THE ISSUANCE OF THE REQUIRED SEWER CONSTRUCTION PERMIT BY THE COUNTY ENGINEER, THE CONTRACTOR SHALL OBTAIN A CERTIFICATE OF WORKER'S COMPENSATION INSURANCE LISTING THE LOS ANGELES COUNTY ENGINEER, 83151 MET VALLENCIA BOULEVARD, VALLENCIA, CALIFORNIA 91355 AS THE CERTIFICATE HOLDER.

CONSTRUCTION NOTES:

- WORK SHALL BE CONSTRUCTED ACCORDING TO THE STANDARD SPECIFICATIONS FOR PUBLIC WORKS CONSTRUCTION 1976 EDITION WITH 1977 SUPPLEMENT AND COUNTY ENGINEER SPECIAL PROVISIONS FOR THE CONSTRUCTION OF SANITARY SEWERS DATED SEPTEMBER 21, 1976 AND SHALL BE PROSECUTED ONLY IN THE PRESENCE OF THE COUNTY ENGINEER.
- THE CONTRACTOR SHALL NOTIFY THE COUNTY ENGINEER BY TELEPHONE, (213) 974-7283 AT LEAST TWENTY-FOUR HOURS BEFORE STARTING ANY WORK UNDER THIS CONTRACT.
- HOUSE LATERALS TO BE CONSTRUCTED WITH INVERTS AT PROPERTY LINE 4 FEET BELOW CURB GRADE EXCEPT AS NOTED.
- WYE OR TEE BRANCHES MAY BE USED FOR CONNECTIONS TO MAINLINE SEWERS EXCEPT AS NOTED.
- ALL STRUCTURES SHALL BE EITHER BRICK MANHOLES PER S-3 OR PRECAST CONCRETE MANHOLES PER S-36, EXCEPT AS NOTED.
- PROVIDE STAKES ON THE PROPERTY LINE OR PROPERTY LINES PRODUCED AT RIGHT ANGLES TO THE SEWER LINE AT THE CENTER LINE OF EACH MANHOLE.
- MANHOLE TOPS IN UNIMPROVED RIGHTS OF WAY TO BE SIX INCHES ABOVE FINISHED GRADE.
- VERTIFIED CLAY PIPE SHALL BE TYPE "S", "T", OR "C" PER STANDARD SPECIFICATIONS SECTION 200-2.
- IF A POWER POLE IS WITHIN THREE FEET OF THE SEWER, THE SEWER SHALL BE ENCASED, PER S-23, CASE II, TWO FEET ON EACH SIDE FROM THE POINT OF INTERFERENCE.
- IF DURING THE COURSE OF CONSTRUCTION IT IS DETERMINED THAT THERE IS LESS THAN FOUR FEET OF COVER OVER THE TOP OF A MAIN LINE OR HOUSE LATERAL V.C.P. SEWER WHICH IS NOT INDICATED ON THE PLANS, THE PIPE SHALL BE ENCASED PER S-23, CASE II UNLESS OTHERWISE APPROVED BY THE COUNTY ENGINEER.
- ALL JOINTS BETWEEN CAST IRON PIPE AND VERTIFIED CLAY PIPE SHALL BE MADE WITH A RUBBER SLEEVE JOINT, TYPE "C" OR "D", (WITH BUSHING IF NECESSARY) PER STANDARD SPECIFICATIONS, SECTION 200-2.
- SEWERS TO BE TESTED FOR LEAKAGE PER SECTION 306-4.6 OF THE STANDARD SPECIFICATIONS AND SPECIAL PROVISIONS.
- RESURFACE ALL TRENCHES WITHIN PAVED AREAS TO MEET L.A. COUNTY ROAD DEPT. OR CALIFORNIA STATE HIGHWAY REQUIREMENTS IN ACCORDANCE WITH PERMITS.
- FULL COMPLIANCE WITH SECTION 306-4.5 OF THE SPECIAL PROVISIONS WILL BE REQUIRED FOR BACKFILL IN STREETS. CERTIFICATION OF BACKFILL COMPACTION AND SAND EQUIVALENTS BY A QUALIFIED, REGISTERED TESTING LABORATORY SHALL BE PROVIDED BY THE PERMITTEE PRIOR TO THE ISSUANCE OF A CERTIFICATE OF PARTIAL ACCEPTANCE.

TO BE CONSTRUCTED IN
THE OLD ROAD
FOR CASTAIC MOBILE HOME PARK
PRIVATE CONTRACT NO. 9493R
INDEX 2885097
W.S. 77-A,5
4 SHEETS, 2 PAGES

SCALE: VERT. 1" = 6'
HORIZ. 1" = 20' MAY, 1978
PREPARED IN THE OFFICES OF
ERVIN ENGINEERING
621 So. WESTMORELAND AVE. LOS ANGELES
BY: *Robert J. Johnson*
REG. C.E. No. 13562

46877

THE FOLLOWING LATEST REVISED STANDARD PLANS ON FILE IN THE OFFICE OF THE COUNTY ENGINEER SHALL APPLY IN THE CONSTRUCTION OF THIS PROJECT.

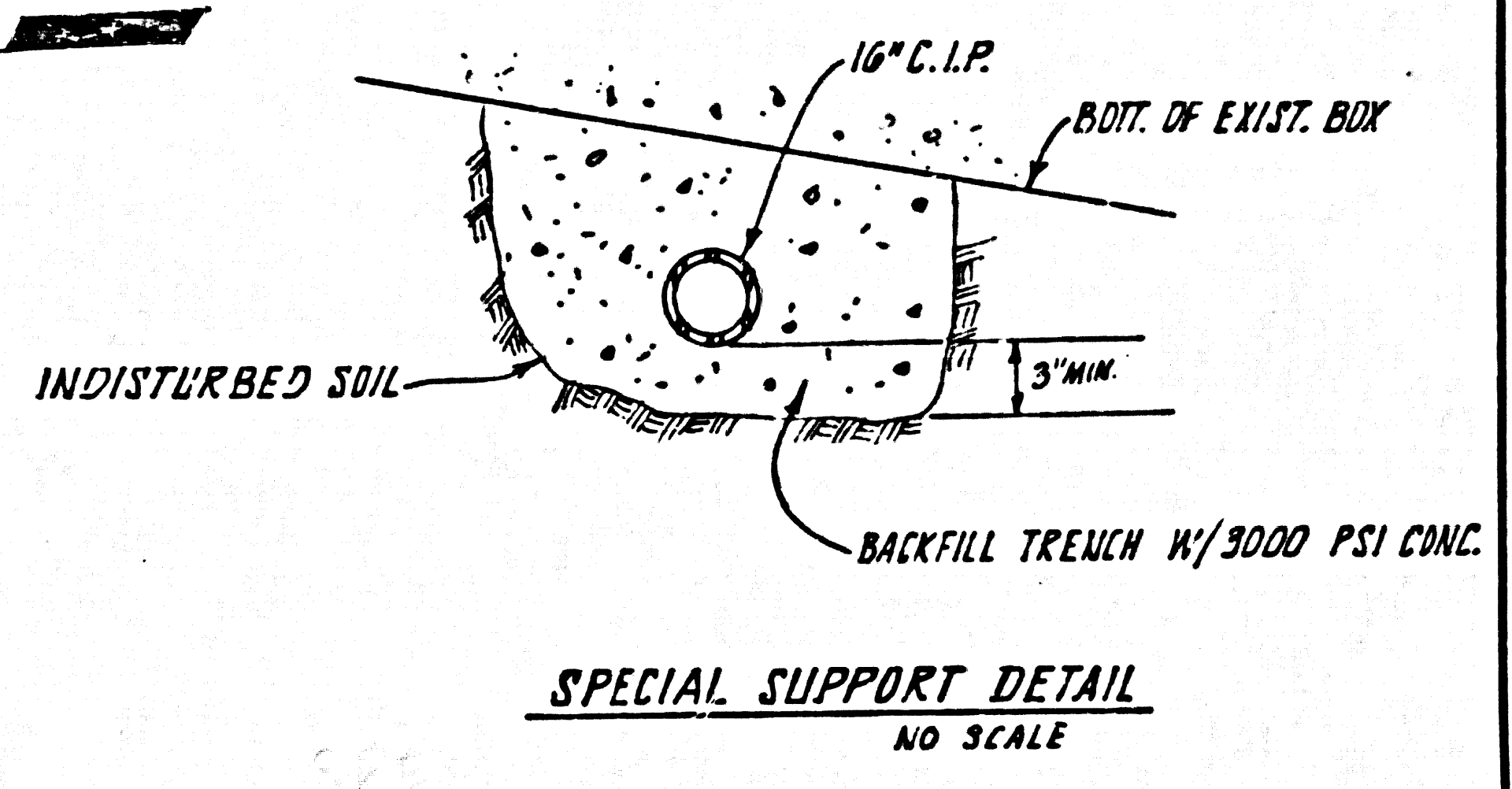
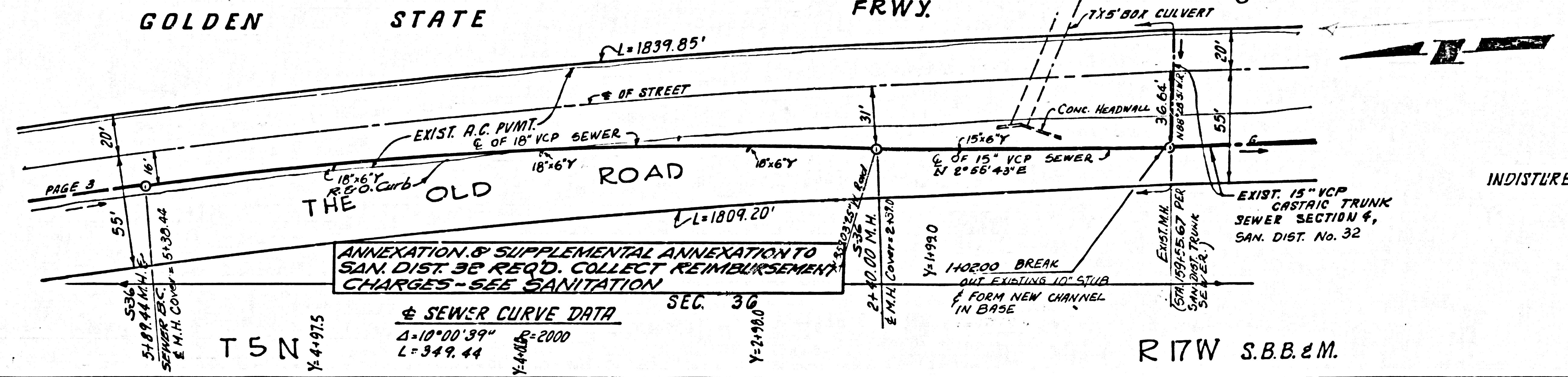
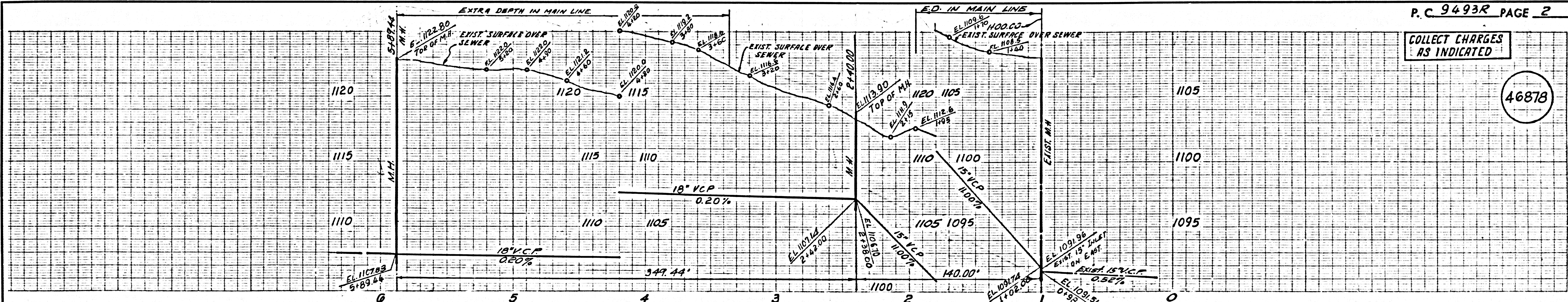
LEGEND	S-1
MINIMUM PUBLIC SAFETY REQUIREMENTS	S-2
BRICK MANHOLE	S-3
STANDARD MANHOLE STEP	S-17
BEDDING FOR SEWER PIPE	S-21
CRADLING AND ENCASEMENT	S-22
WYE OR TEE SUPPORT	S-26
ALLOWABLE TRENCH WIDTHS	S-28
LOCKING MANHOLE FRAME AND COVER	S-29
NON-REINFORCED PRECAST CONCRETE MANHOLE	S-36

COUNTY OF LOS ANGELES, CALIFORNIA
STEPHEN J. KANE COUNTY ENGINEER JOHN D. PARKHURST, CHIEF ENGINEER
APPROVED *John J. Miles* REGIONAL ENGINEER APPROVED *Frank R. ...* OFFICE ENGINEER
CHECKED *Robert H. Meier* 5-29-78
REG. C.E. No. 13786
SANTA CLARITA VALLEY BLDG. DIST. 8.2 I.N. 0958.01

P.C. 9493R PAGE 2

COLLECT CHARGES
AS INDICATED

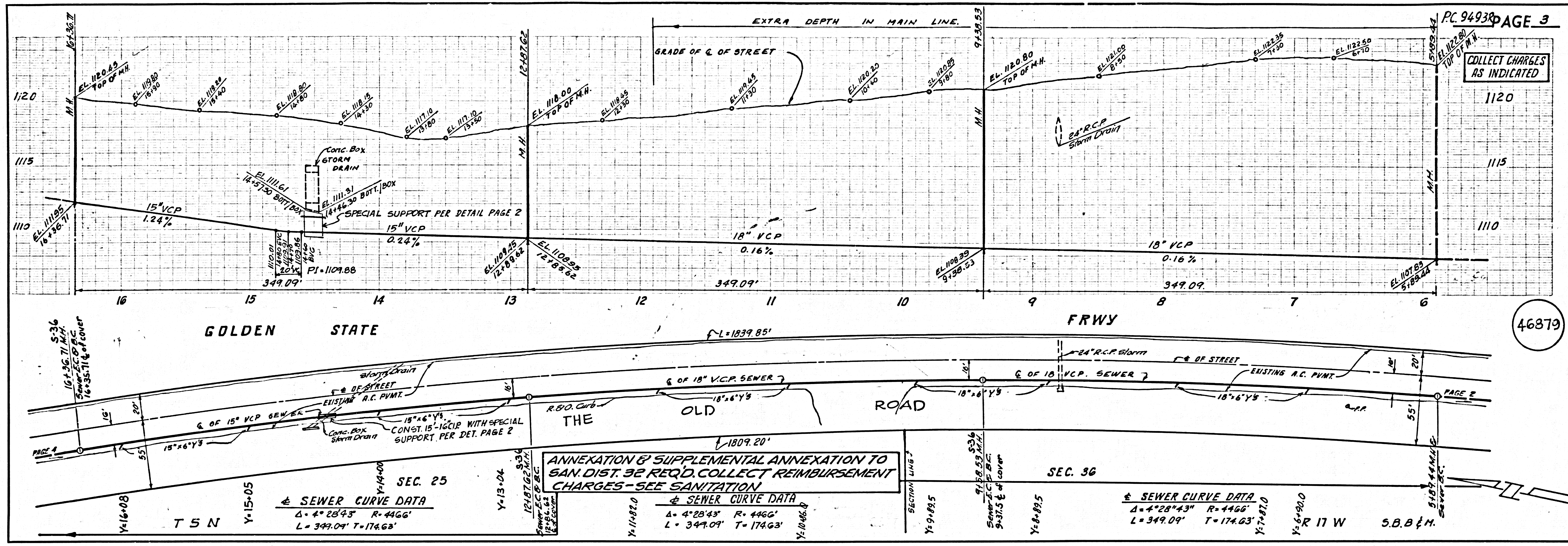
46878



ANNEXATION & SUPPLEMENTAL ANNEXATION TO
SAN. DIST. 32 REG. Q. COLLECT REIMBURSEMENT
CHARGES - SEE SANITATION

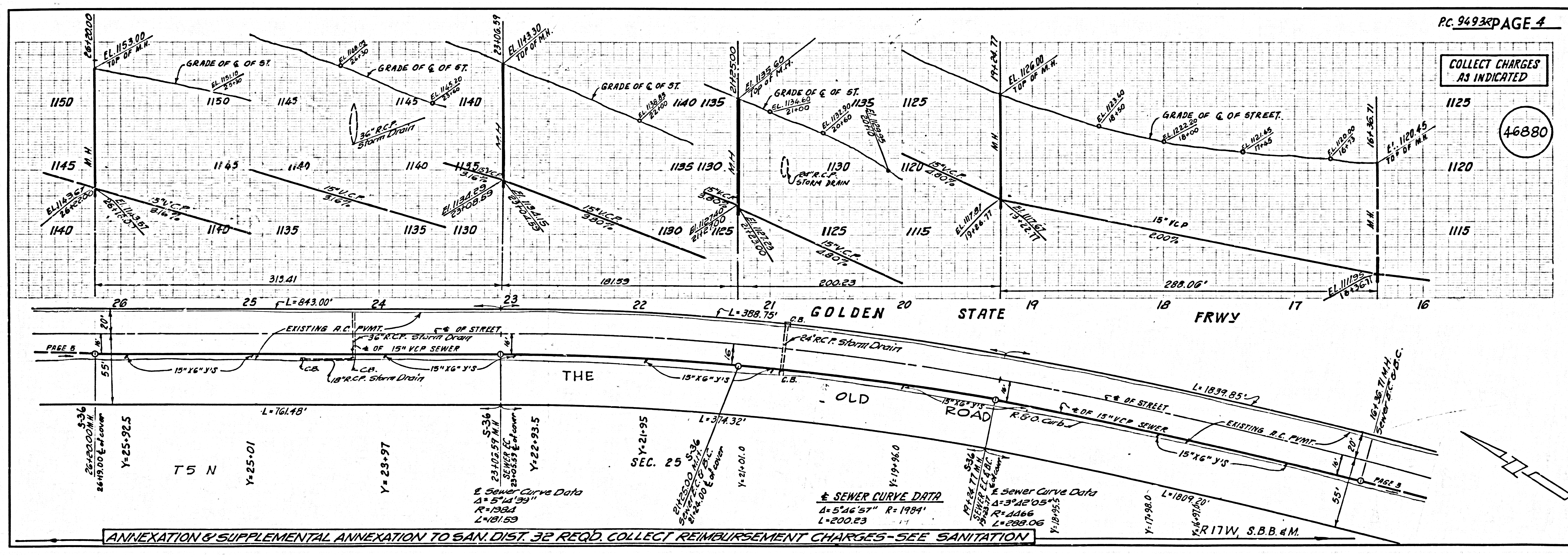
SEWER CURVE DATA SEC. 30
Δ=10°00'39"
L=349.44
Y=2+98.0

R 17W S.B.B. & M.



COLLECT CHARGES AS INDICATED

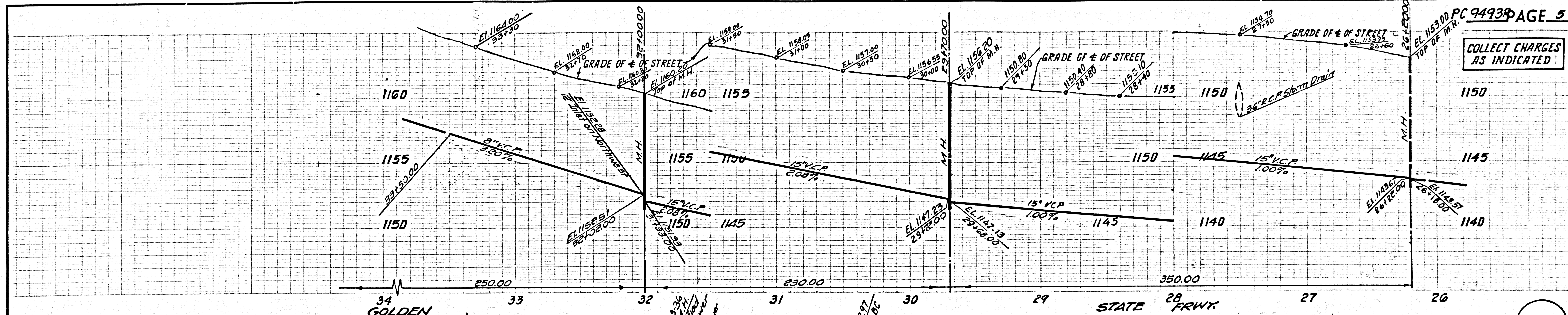
46879



COLLECT CHARGES AS INDICATED

46880

COLLECT CHARGES AS INDICATED



46881

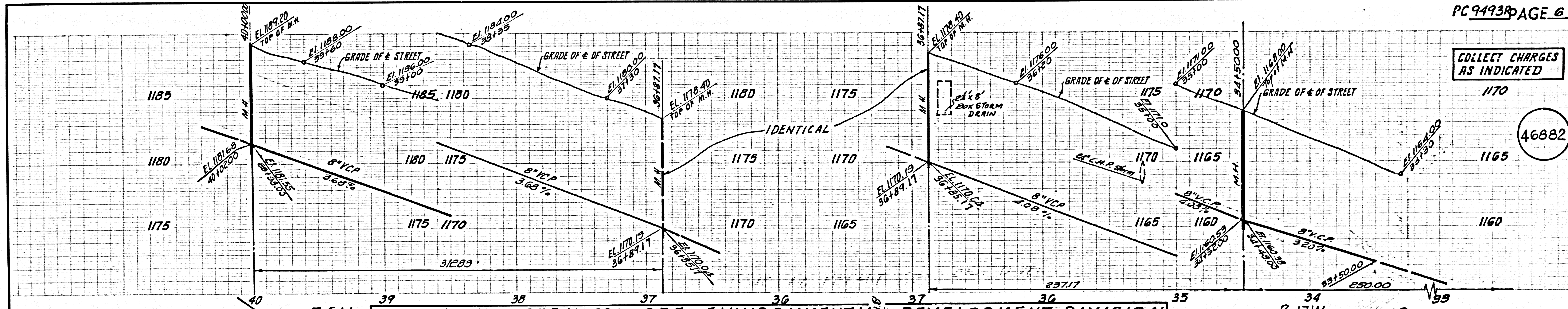
ISSUE NO PERMITS SEE ENV. DEV. DIV.

SEWER CURVE DATA
 $\Delta = 22^\circ 35' 35''$
 $R = 634$
 $L = 250.00$

SEWER CURVE DATA
 $\Delta = 13^\circ 17' 15''$ $R = 634$
 $L = 147.03$

ANNEXATION & SUPPLEMENTAL ANNEXATION TO SAN. DIST. 32 REQD. COLLECT REIMBURSEMENT CHARGES-SEE SANITATION

COLLECT CHARGES AS INDICATED



46882

ISSUE NO PERMITS SEE ENVIRONMENTAL DEVELOPMENT DIVISION SEC. 25

SEWER CURVE DATA
 $\Delta = 25^\circ 04' 27''$ $R = 316$
 $L = 138.29$

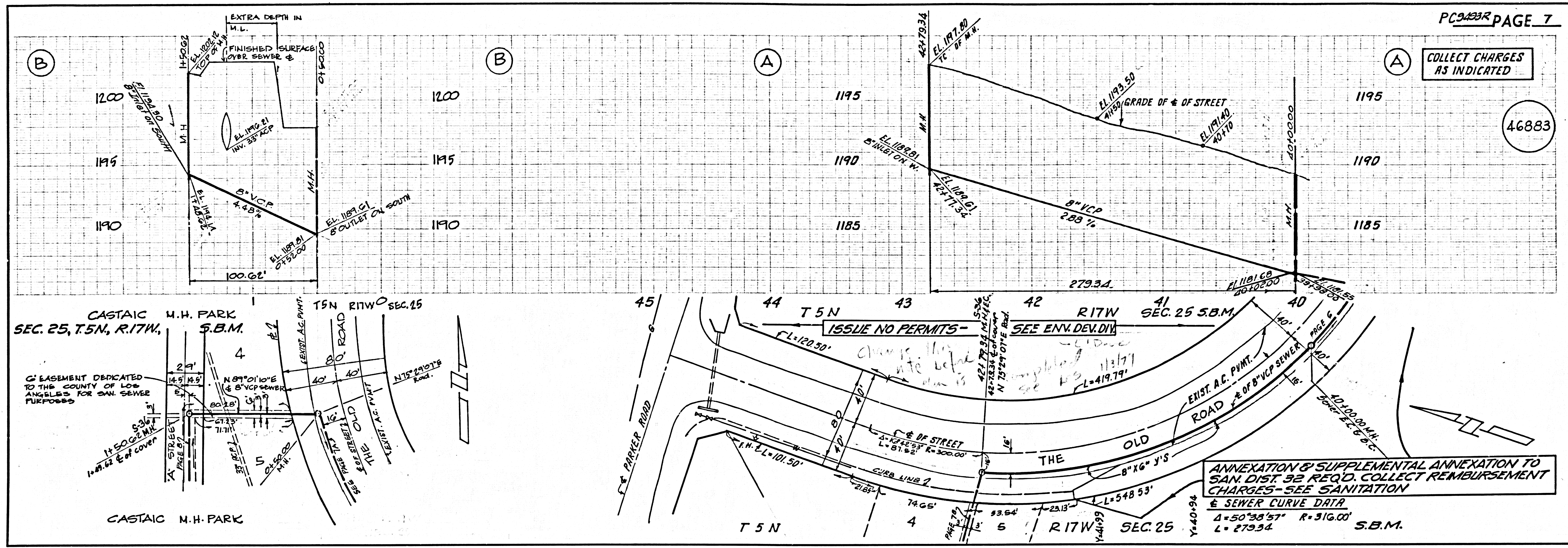
SEWER CURVE DATA
 $\Delta = 21^\circ 42' 01''$ $R = 634$
 $L = 237.17$

SEWER CURVE DATA
 $\Delta = 22^\circ 35' 35''$ $R = 634$
 $L = 250.00$

ANNEXATION & SUPPLEMENTAL ANNEXATION TO SAN. DIST. 32 REQD. COLLECT REIMBURSEMENT CHARGES-SEE SANITATION

COLLECT CHARGES AS INDICATED

46883



NO CHARGE FOR CONNECTION

46884

