

SANITARY SEWERS

CONSTRUCTED IN TRACT NO. 34160

PRIVATE CONTRACT NO. 9497

W.S. 39-85 3 SHEETS, 6 PAGES

4731G

SCALE: VERT. 1"=8' HORIZ. 1"=40' JANUARY, 1978 PREPARED IN THE OFFICES OF V.T.N. CONSOLIDATED INC. 2301 CAMPUS DRIVE IRVINE, CA. 92614 (714) 833-2450 BY: [Signature] REG. C. E. No. 23462

THE FOLLOWING LATEST REVISED STANDARD PLANS ON FILE IN THE OFFICE OF THE COUNTY ENGINEER SHALL APPLY IN THE CONSTRUCTION OF THIS PROJECT.

LEGEND table with items: MINIMUM PUBLIC SAFETY REQUIREMENTS, BRICK MANHOLE, STANDARD MANHOLE STEP, BEDDING FOR SEWER PIPE, CRADLING AND ENCASEMENT, WYE OR THE SUPPORT, ALLOWABLE TRENCH WIDTHS, LOCKING MANHOLE FRAME AND COVER, NON-REINFORCED PRECAST CONCRETE MANHOLE.

COUNTY OF LOS ANGELES, CALIFORNIA STEPHEN J. KOONCE COUNTY ENGINEER JOHN D. PARKURST, CHIEF ENGINEER APPROVED [Signature] 9/10/78 APPROVED [Signature] 8/11/78 SAN DIMAS REGIONAL ENGINEER OFFICE ENGINEER CHECKED [Signature] 8/11/78 NO. C.E. NO. 10653 SAN DIMAS BLDG. DIST. 10 I.N. 0250.02

REVISION NO. 1 DATE: 10-20-78 ON AMBUSHERS STREET; ADDED M.H. AT STA. 7+50.00 ON PAGE #4, LOWERED SEWER MAIN FROM STA. 7+50.00 TO STA. 13+00.00 OF PAGES #9 & 4. AND CHANGED LOCATION OF SEWER HOUSE LATERALS OF LOT# 2-10 & 11, ON HONEY BROOK LANE; LOWERED SEWER MAIN FROM STA. 0+00.00 TO STA. 1+00.00 OF PAGE #2 APPROVED Martin L. Murphy 10-24-78 OFFICE OF COUNTY ENGINEER REG. #18594

DOUBLE SCALE

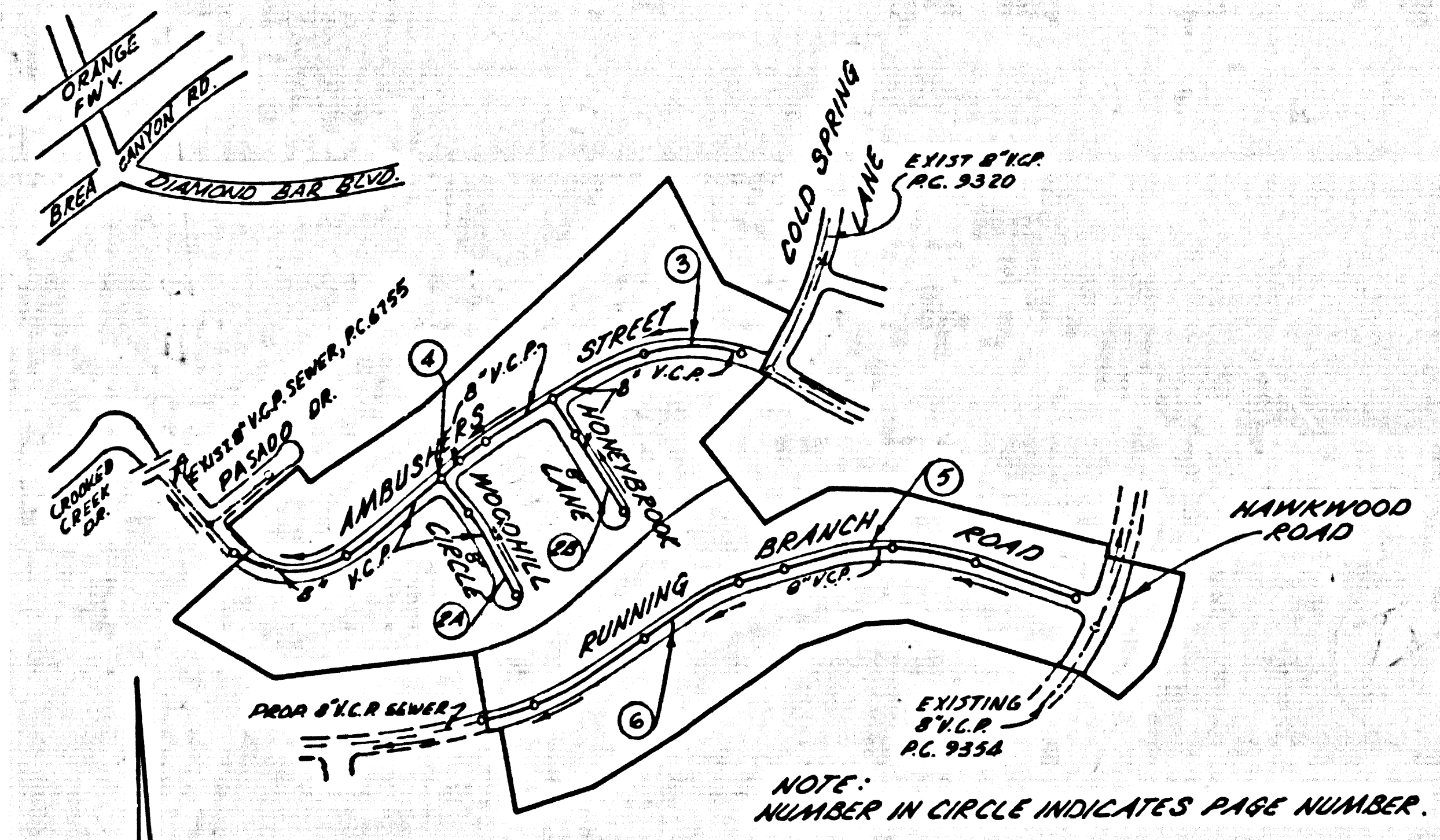
GENERAL NOTES:

- 1. ELEVATIONS ARE IN FEET ABOVE M.S.C. & U.S. SEA LEVEL DATUM OF 1929.
2. NO IMPROVEMENTS SHALL BE MADE IN THESE PLANS WITHOUT THE APPROVAL OF THE COUNTY ENGINEER.
3. NO REPRESENTATIVE OF THE COUNTY ENGINEER WILL SURVEY OR LAY OUT ANY PORTION OF THE WORK.
4. GRADES TO WHICH THIS IMPROVEMENT IS TO BE CONSTRUCTED ARE SHOWN ON PLANS AND PROFILES. GRADE POINTS FOR TOP OF CURBS, CENTER LINE OF STREETS, OR CENTER LINE OF ALLEYS ARE SHOWN BY CIRCLES ON PROFILES. AT ALL POINTS BETWEEN DESIGNATED POINTS THE GRADE SHALL BE ESTABLISHED SO AS TO CONFORM TO A STRAIGHT LINE DRAWN BETWEEN SAID DESIGNATED POINTS.
5. THE PRIVATE ENGINEER SHALL FURNISH THE COUNTY ENGINEER WITH GRADE SHEETS AND STATIONING FOR ALL HOUSE LATERALS AND "T" OR "Y" BRANCHES AND SHALL PROVIDE STAKES FOR THEM AT THEIR PROPER LOCATIONS WITH STATIONING PLAINLY MARKED. ALL HOUSE LATERALS SHALL BE CONSTRUCTED IN A STRAIGHT ALIGNMENT AT RIGHT ANGLES FROM THE MAIN LINE SEWER EXCEPT AS SHOWN ON THE PLANS. HOUSE LATERALS FROM CHIMNEYS SHALL NOT HAVE AN ANGLE OF LESS THAN 45° WITH THE MAIN LINE SEWER. ANY CHANGE IN ALIGNMENT SHALL BE REQUESTED IN WRITING BY THE PRIVATE ENGINEER.
6. THE PRIVATE ENGINEER SHALL FURNISH THE HOUSE LATERAL DEPTH AT THE PROPERTY LINE BELOW THE TOP OF CURB ELEVATION FOR EACH HOUSE LATERAL ON THE GRADE SHEET.
7. BEFORE WORK CAN BE STARTED, THE CONTRACTOR MUST OBTAIN A PERMIT TO EXCAVATE IN COUNTY STREETS FROM THE L.A. COUNTY ROAD DEPT., DISTRICT OFFICE NO. 1, AND PAY A FEE TO THE COUNTY ENGINEER, 201 E. BOWTIE AVE., SAN DIMAS REGIONAL OFFICE, TO COVER THE COST OF CONSTRUCTION INSPECTION AND RECORD PLANS.
8. IF WORK IS TO BE DONE IN A STATE HIGHWAY, A PERMIT MUST BE OBTAINED FROM THE STATE OF CALIFORNIA, DIVISION OF HIGHWAYS, 120 SOUTH SPRING STREET, LOS ANGELES, CALIFORNIA.
9. APPROVAL OF THIS PLAN BY THE COUNTY OF LOS ANGELES DOES NOT CONSTITUTE A REPRESENTATION AS TO THE ACCURACY OF THE LOCATION OF OR THE EXISTENCE OR NON-EXISTENCE OF ANY UNDERGROUND UTILITY PIPE, OR STRUCTURE WITHIN THE LIMITS OF THIS PROJECT. THIS NOTE APPLIES TO ALL PAGES.
10. REFER TO SECTION 7-10.4.3 OF THE STANDARD SPECIFICATIONS, REGARDING SAFETY ORDERS.
11. PRIOR TO ISSUANCE OF THE SEWER CONSTRUCTION PERMIT BY THE COUNTY ENGINEER, THE CONTRACTOR SHALL OBTAIN A PERMIT TO EXCAVATE FROM THE STATE OF CALIFORNIA, DEPARTMENT OF INDUSTRIAL RELATIONS, DIVISION OF INDUSTRIAL SAFETY AND SHALL FILE A CERTIFICATE OF WORKERS COMPENSATION INSURANCE AND LIABILITY INSURANCE WITH THE COUNTY ENGINEER.
12. 1/4" = 1' INDICATES H.L. TO BE CONSTRUCTED AT GRADE OF 1/4" PER FOOT TO PROPERTY LINE.

CONSTRUCTION NOTES:

- 1. WORK SHALL BE CONSTRUCTED ACCORDING TO THE STANDARD SPECIFICATIONS FOR PUBLIC WORKS CONSTRUCTION (1976 EDITION) AND COUNTY ENGINEER SPECIAL PROVISIONS FOR THE CONSTRUCTION OF SANITARY SEWERS DATED SEPTEMBER 24, 1976 AND SHALL BE PROSECUTED ONLY IN THE PRESENCE OF THE COUNTY ENGINEER.
2. THE CONTRACTOR SHALL NOTIFY THE SUPERVISOR, DEPARTMENT OF PUBLIC WORKS, 201 E. BOWTIE AVE., SAN DIMAS REGIONAL OFFICE, AT LEAST TWENTY-FOUR HOURS BEFORE STARTING ANY WORK UNDER THIS CONTRACT.
3. HOUSE LATERALS TO BE CONSTRUCTED WITH INVERTS AT PROPERTY LINE 4 FEET BELOW CURB GRADE EXCEPT AS NOTED.
4. WYE OR TEE BRANCHES MAY BE USED FOR CONNECTIONS TO MAINLINE SEWERS EXCEPT AS NOTED.
5. ALL STRUCTURES SHALL BE EITHER BRICK MANHOLES PER S-3 OR PRECAST CONCRETE MANHOLES PER S-36, EXCEPT AS NOTED.
6. PROVIDE STAKES ON THE PROPERTY LINE OR PROPERTY LINES PRODUCED AT RIGHT ANGLES TO THE SEWER LINE AT THE CENTER LINE OF EACH MANHOLE.
7. MANHOLE TOPS IN UNIMPROVED SIGHTS OF WAY TO BE SIX INCHES ABOVE FINISHED GRADE.
8. VITRIFIED CLAY PIPE JOINTS SHALL BE TYPE "B", "T", OR "C" PER STANDARD SPECIFICATIONS SECTION 308-2.
9. IF A POWER POLE IS WITHIN THREE FEET OF THE SEWER, THE SEWER SHALL BE ENCASED, PER S-23, CASE II, TWO FEET ON EACH SIDE FROM THE POINT OF INTERFERENCE.
10. IF DURING THE COURSE OF CONSTRUCTION IT IS DETERMINED THAT THERE IS LESS THAN FOUR FEET OF COVER OVER THE TOP OF A MAIN LINE OR HOUSE LATERAL Y.C.P. SEWER WHICH IS NOT INDICATED ON THE PLANS, THE PIPE SHALL BE ENCASED PER S-23, CASE II UNLESS OTHERWISE APPROVED BY THE COUNTY ENGINEER.
11. ALL JOINTS BETWEEN CAST IRON PIPE AND VITRIFIED CLAY PIPE SHALL BE MADE WITH A RUBBER SLEEVE JOINT, TYPE "C" OR "D", (WITH BUSHING IF NECESSARY) PER STANDARD SPECIFICATIONS, SECTION 308-2.
12. SEWERS TO BE TESTED FOR LEAKAGE PER SECTION 306-4.1 OF THE STANDARD SPECIFICATIONS AND SPECIAL PROVISIONS.
13. REINFORCE ALL TRENCHES WITHIN PAVED AREAS TO MEET L.A. COUNTY ROAD DEPT. OR CALIFORNIA STATE HIGHWAY REQUIREMENTS IN ACCORDANCE WITH PERMITS.
14. FULL COMPLIANCE WITH SECTION 306.4.2 OF THE SPECIAL PROVISIONS WILL BE REQUIRED FOR BACKFILL IN STREETS. CERTIFICATION OF BACKFILL COMPACTION AND SAME EQUIVALENTS BY A QUALIFIED, REGISTERED TESTING LABORATORY SHALL BE PROVIDED BY THE PERMITTEE PRIOR TO THE ISSUANCE OF A CERTIFICATE OF PARTIAL ACCEPTANCE.

B.M. CG 3907 ELEV. 744.625 ROOM TAG IN CB 38' N.W. 1/4 AC. 37.75' W. 1/2 40' W. 1/2 S.W. 1/4 DIAMOND BAR BLVD. & COLD SPRING LANE OTERBIEN QUAD. 19 25



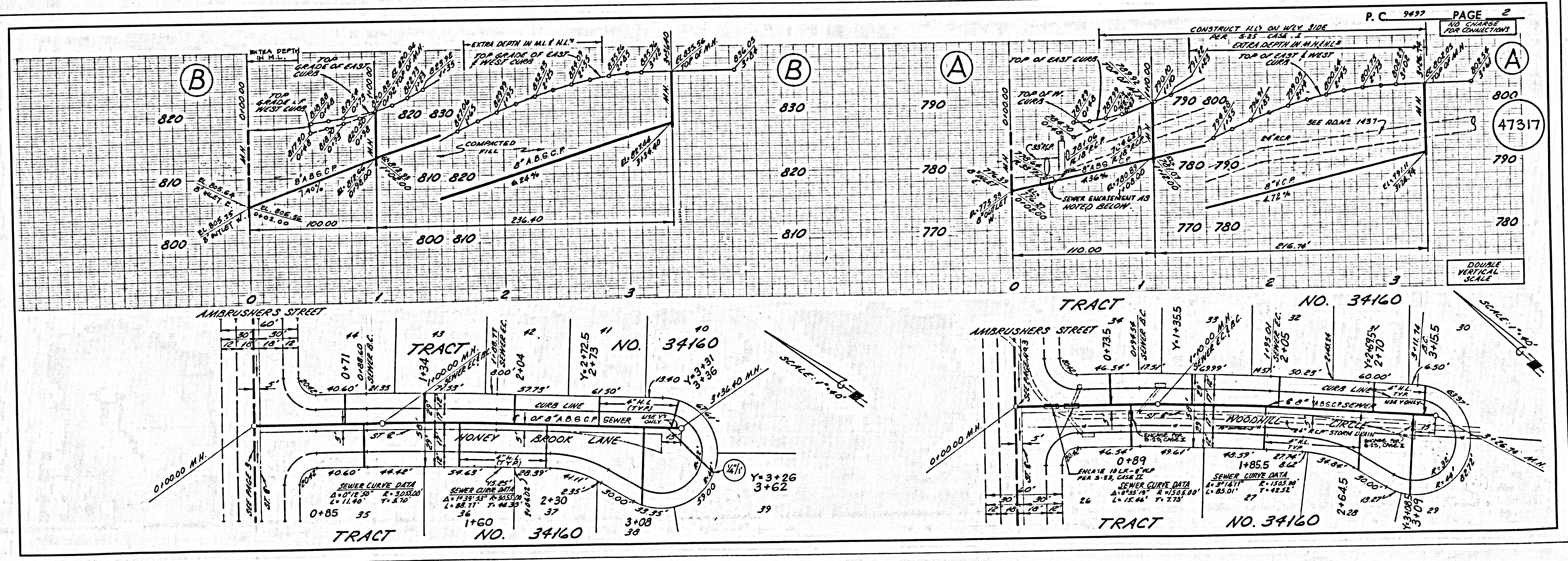
NOTE: NUMBER IN CIRCLE INDICATES PAGE NUMBER.

INDEX MAP SCALE: 1"=400' TRACT NO. 34160 P.C. 9497

BEFORE BREAKING INTO OR CONSTRUCTION ON A COUNTY SANITATION DISTRICT SEWER AND PRIOR TO FINAL ACCEPTANCE OF THE PROJECT SANITATION DISTRICT INSPECTOR SHALL BE NOTIFIED BY PHONE 962-8665, SO THAT REQUIRED INSPECTION CAN BE MADE.

NO CONNECTION FOR THE DISPOSAL OF INDUSTRIAL WASTES SHALL BE MADE TO SEWERS SHOWN ON THESE DRAWINGS UNTIL A PERMIT FOR INDUSTRIAL WASTE WATER DISCHARGE HAS BEEN ISSUED BY THE SANITATION DISTRICTS FOR SAID CONNECTION.

ISSUE NO PERMITS IN RUNNING BRANCH ROAD UNTIL PROPOSED OUTLET SEWER IS ACCEPTED.

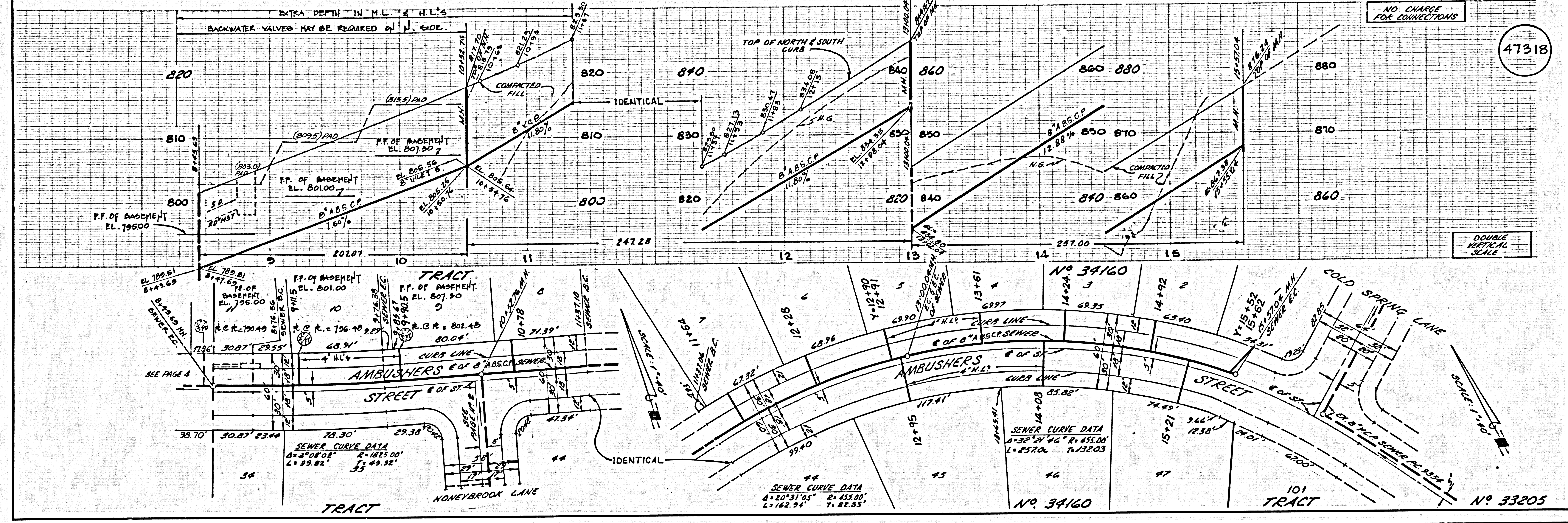




NO CHARGE FOR CONNECTIONS

47318

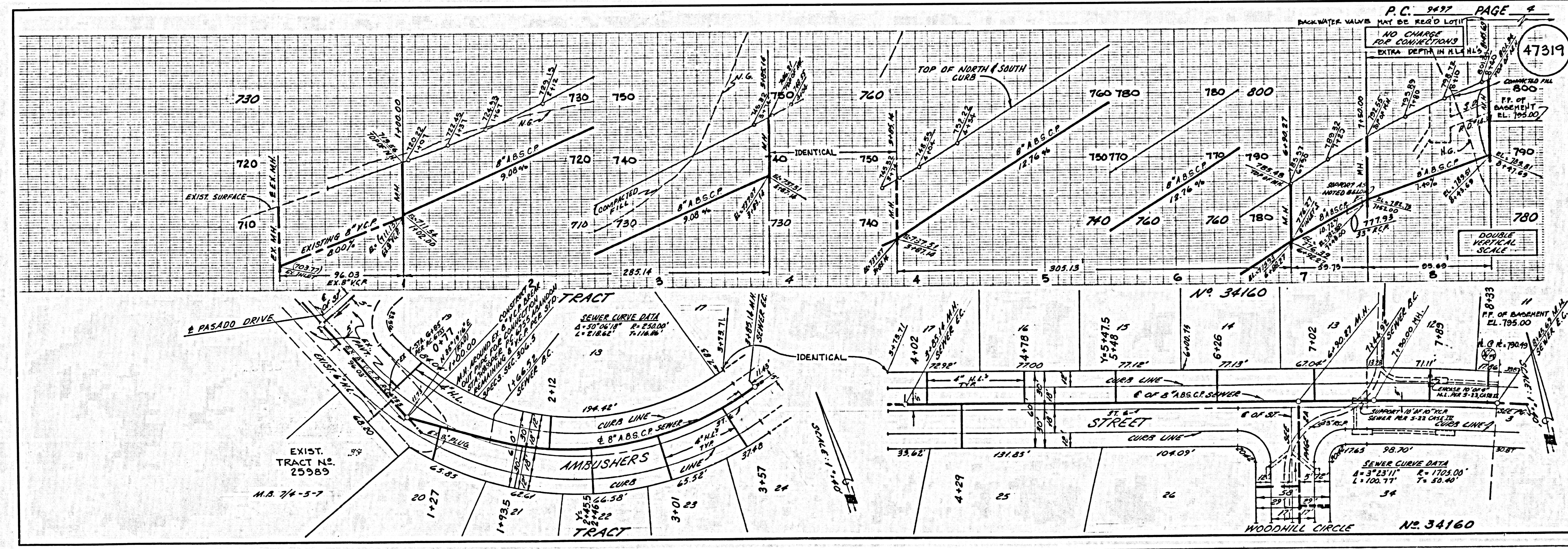
DOUBLE VERTICAL SCALE



NO CHARGE FOR CONNECTIONS

47319

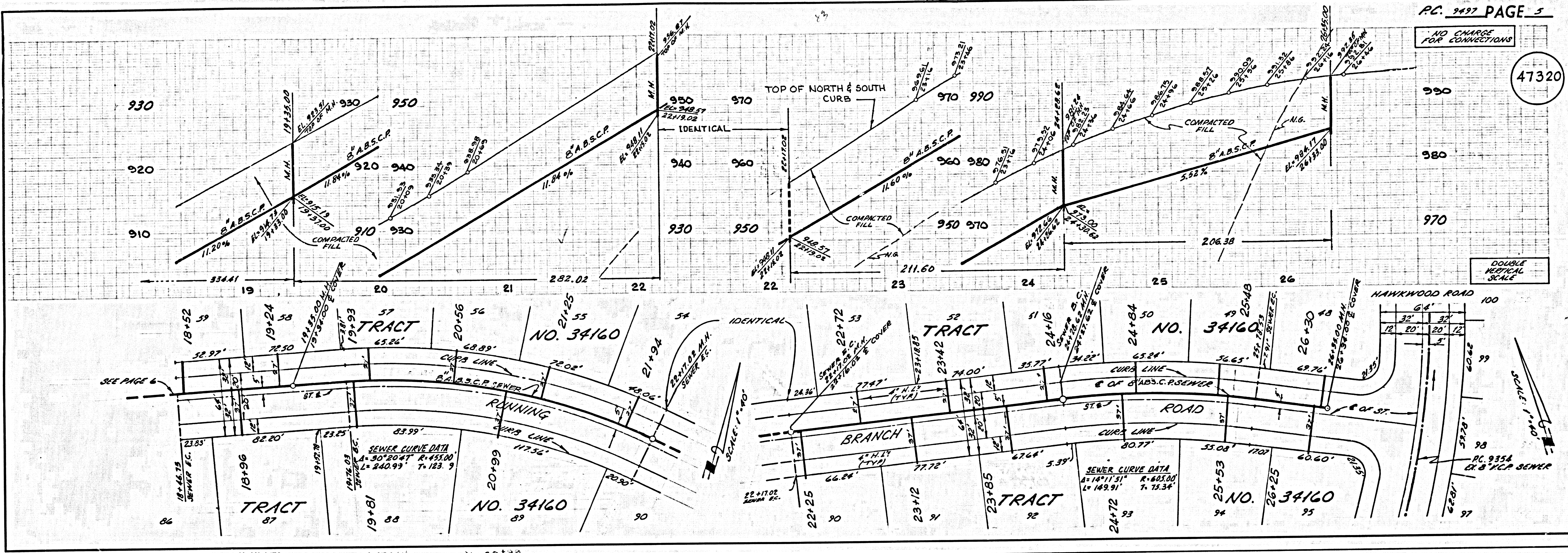
DOUBLE VERTICAL SCALE





NO CHARGE FOR CONNECTIONS

47320



NO CHARGE FOR CONNECTIONS

47321

