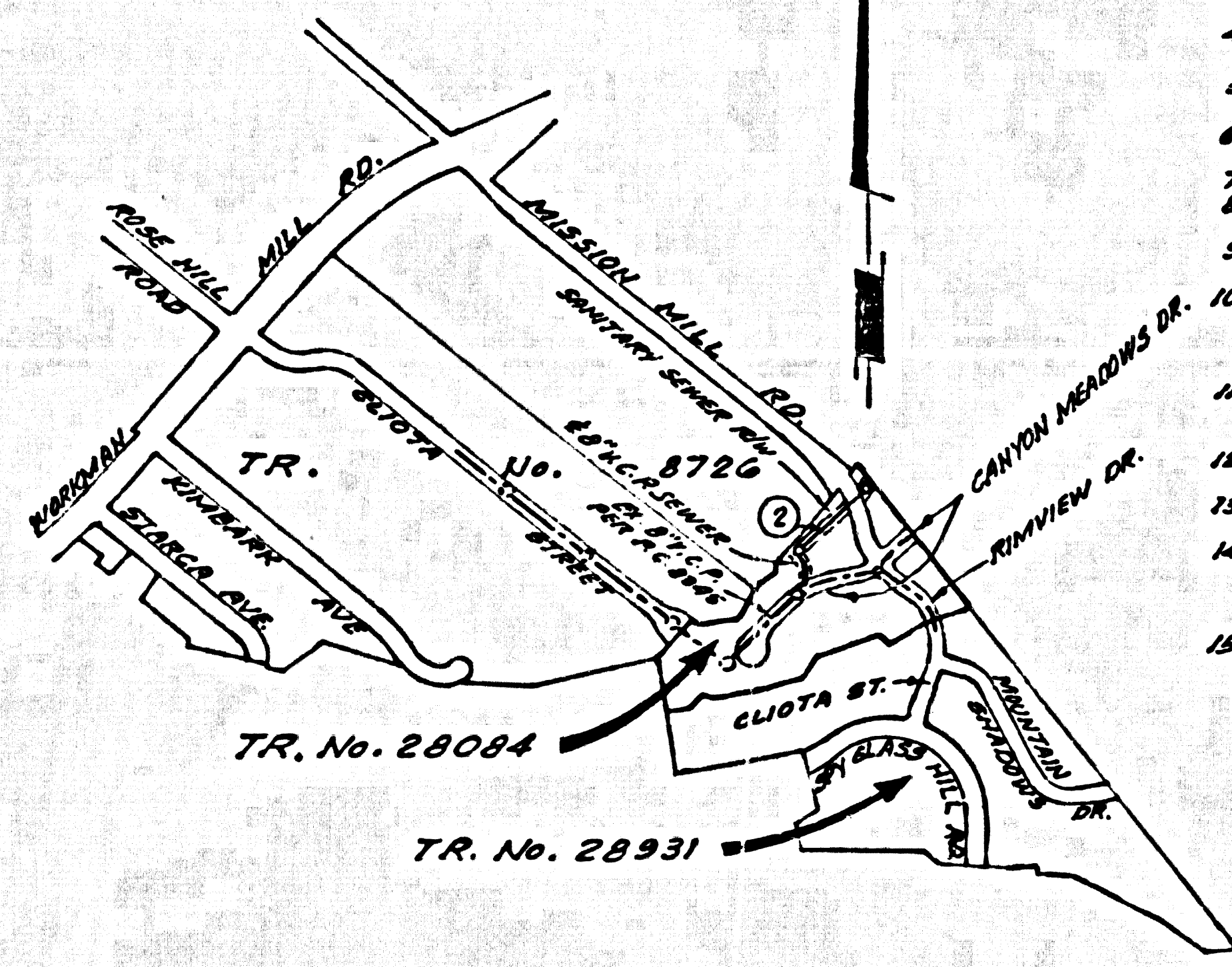


B.M. C.Y. 6638 ELEV. 225.672
 GREAT SPIKE & LEAD 2.4' W/O E. END OF CONC.
 HEADWALL OF DRAIN @ INT. STR. JOE+30
 25' WEST & 28' SOUTH & INT. WARRIMAN MILL
 ROAD & SPY GLASS HILL ROAD
 WHITTIER QUAD. 1975 ADJ.



INDEX MAP
 P.C. No. 3498
 EASEMENT
 SCALE: 1"=600'

- CONSTRUCTION NOTES:**
1. WORK SHALL BE CONSTRUCTED ACCORDING TO THE STANDARD SPECIFICATIONS FOR PUBLIC WORKS CONSTRUCTION 1976 EDITION AND COUNTY ENGINEER SPECIAL PROVISIONS FOR THE CONSTRUCTION OF SANITARY SEWERS DATED MARCH 1978 AND SHALL BE PROSECUTED ONLY IN THE PRESENCE OF THE COUNTY ENGINEER.
 2. THE CONTRACTOR SHALL NOTIFY THE DESIGN DIVISION BY TELEPHONE, 968-7411, EXT. 250 AT LEAST TWENTY-FOUR HOURS BEFORE STARTING ANY WORK UNDER THIS CONTRACT.
 3. HOUSE LATERALS TO BE CONSTRUCTED WITH INVERTS AT THE EXISTING GRADE UNLESS OTHERWISE SPECIFIED AS NOTED.
 4. USE OF THE BRANCHES MAY BE USED FOR CONNECTIONS TO MAINLINE SEWERS EXCEPT AS NOTED.
 5. ALL STRUCTURES SHALL BE EITHER BRICK MANHOLES PER S-3 OR PRECAST CONCRETE MANHOLES PER S-16, EXCEPT AS NOTED.
 6. PROVIDE STAKES ON THE PROPERTY LINE OR NEAREST PROPERTY LINE PRODUCED AT RIGHT ANGLES TO THE SEWER LINE AT THE CENTER LINE OF EACH MANHOLE.
 7. MANHOLES TO BE CONSTRUCTED WITH INVERTS TO BE SIX INCHES ABOVE FINISHED GRADE.
 8. VITRIFIED CLAY PIPE UNITS SHALL BE TYPE "D", "E" OR "F" PER STANDARD SPECIFICATIONS SECTION 208-2.
 9. IF A HOUSE LATERAL IS WITHIN THE FEET OF THE SEWER, THE SEWER SHALL BE ENCASED PER S-25, CASE II, TWO FEET ON EACH SIDE FROM THE POINT OF INTERFERENCE.
 10. IF DURING THE COURSE OF CONSTRUCTION IT IS DETERMINED THAT THERE IS LESS THAN FOUR FEET OF COVER OVER THE TOP OF A MAIN LINE OF HOUSE LATERAL V.C.P. SEWER WHICH IS NOT INDICATED ON THE PLANS, THE PIPE SHALL BE ENCASED PER S-25, CASE II UNLESS OTHERWISE APPROVED BY THE COUNTY ENGINEER.
 11. ALL JOISTS BETWEEN CURB WITH PINE AND VITRIFIED CLAY PIPE SHALL BE MADE WITH A RUBBER BLEND JOIST, TYPE "C" OR "D" WITH BUSHING IF NECESSARY PER STANDARD SPECIFICATIONS, SECTION 208-2.
 12. SEWERS TO BE TESTED FOR LEAKAGE PER SECTION 306-1.4 OF THE STANDARD SPECIFICATIONS AND SPECIAL PROVISIONS.
 13. RESURFACE ALL TROTTLES WITHIN PAVED AREAS TO MEET L.A. COUNTY DEPT. OF CALIFORNIA STATE HIGHWAY REQUIREMENTS IN ACCORDANCE WITH PERMITS.
 14. FULL COMPLIANCE WITH SECTION 306-1.3.5 OF THE SPECIAL PROVISIONS WILL BE REQUIRED THROUGHOUT THE PROJECT. THE CONTRACTOR SHALL BE RESPONSIBLE FOR OBTAINING ALL NECESSARY PERMITS FROM THE SANITATION DISTRICTS FOR SAID CONNECTION.
 15. SPECIAL BACKFILL REQUIREMENTS:
 - a. BACKFILL TRENCH AND REPLACE OTHER EARTH REMOVED SO AS TO ACHIEVE THE NATURAL OR FINISHED GRADES AND SLOPES SHOWN ON THE GRADING PLAN APPROVED FOR THIS TRACT BY THE ENGINEER AND COUNTY ENGINEER.
 - b. ALL BACKFILL AND EARTH REPLACED SHALL BE COMPACTED TO A MINIMUM OF 90% OF MAXIMUM DENSITY PER A S.T.M. STA. METHOD OF TEST D58 - 57 AS REQUIRED. ACCEPTABLE CERTIFICATION OF SUCH COMPACTION SHALL BE SUBMITTED TO THE DESIGN DIVISION.

NO CONNECTION FOR THE DISPOSAL OF INDUSTRIAL WASTES SHALL BE MADE TO SEWERS SHOWN ON THESE DRAWINGS UNTIL A PERMIT FOR INDUSTRIAL WASTE WATER DISCHARGE HAS BEEN ISSUED BY THE SANITATION DISTRICTS FOR SAID CONNECTION.

BEFORE BREAKING INTO OR CONSTRUCTION ON A COUNTY SANITATION DISTRICT SEWER AND PRIOR TO FINAL ACCEPTANCE OF THE PROJECT SANITATION DISTRICT INSPECTOR NOTIFIED BY PHONE 962-0040 SO THAT REQUIRED INSPECTION CAN BE MADE.

COLLECT CHARGES AS INDICATED

NOTICE TO CONTRACTOR

The existence and location of any underground utility pipes or structures shown on these plans are obtained by a search of the available records. To the best of my knowledge there are no existing utilities except as shown on these plans. The contractor is required to take due precautionary measures to protect the utility lines shown and any other lines not of record or not shown on these plans.

Ludwig J. Gumpel
 REG. C.E. NO. 17532

DOUBLE SCALE VERTICAL WHITTIER BLDG. DIST. NO. 11

PROFILE ALIGNMENT AND GRADE OF
SANITARY SEWERS PAGE 1

R/W, NW/MISSION MILL ROAD
 AND CANYON MEADOWS DRIVE
 PRIVATE CONTRACT NO. 9498

W.S. 37
 1 SHEET OF 2 PAGES
 SCALE: VERT. 1"=8'
 HORIZ. 1"=40'
 JAN., 1978.
 PREPARED IN THE OFFICES OF
E.L. PEARSON AND ASSOCIATES

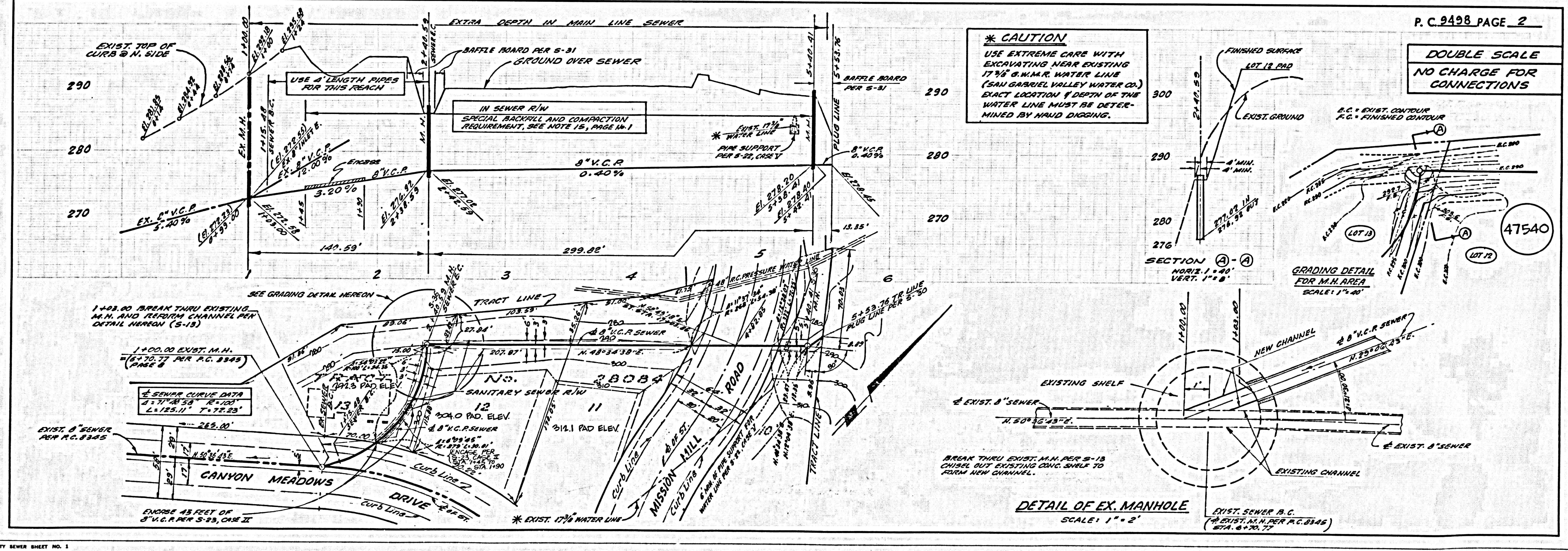
47539

THE FOLLOWING LATEST REVISED STANDARD PLANS ON FILE IN THE OFFICE OF THE COUNTY ENGINEER SHALL APPLY IN THE CONSTRUCTION OF THIS PROJECT.

LEGEND	5-1
MINIMUM PUBLIC SAFETY REQUIREMENTS	5-2
SEWER MANHOLE	5-3
STANDARD MANHOLE STEP	5-17
BEDDING FOR SEWER PIPE	5-21
GRADING AND EMBANKMENT	5-22
W/P AT THE SURFACE	5-28
ALLOWABLE TRENCH WIDTHS	5-33
LOCKING MANHOLE FRAME & COVER	5-35
MANHOLE REINFORCED PRECAST CONCRETE MANHOLE	5-36
CONNECTION TO EXISTING MANHOLE	5-13
STOPPING	5-30
RAILROAD DETAIL	5-11

COUNTY OF LOS ANGELES, CALIFORNIA
 STEPHEN J. KODICE, ACTING CH. ENGINEER
 J. D. PARKHURST, CHIEF ENGINEER
 APPROVED BY: *Quinn E. McCallum* REG. ENGINEER
 APPROVED BY: *Frank R. DeWitt* 3/8/78 OFFICE ENGINEER
 CHECKED BY: *Ralph David Smith* 2/16/78
 REG. C.E. NO. 16992

WHITTIER BLDG. DIST. 11
 J.N. 0358.01



*** CAUTION**
 USE EXTREME CARE WITH EXCAVATING NEAR EXISTING 17 1/2" S.W.M.R. WATER LINE (SAN GABRIEL VALLEY WATER CO.) EXACT LOCATION & DEPTH OF THE WATER LINE MUST BE DETERMINED BY HAND DIGGING.

P.C. 9498 PAGE 2

DOUBLE SCALE NO CHARGE FOR CONNECTIONS

47540

DETAIL OF EX. MANHOLE
 SCALE: 1"=2'