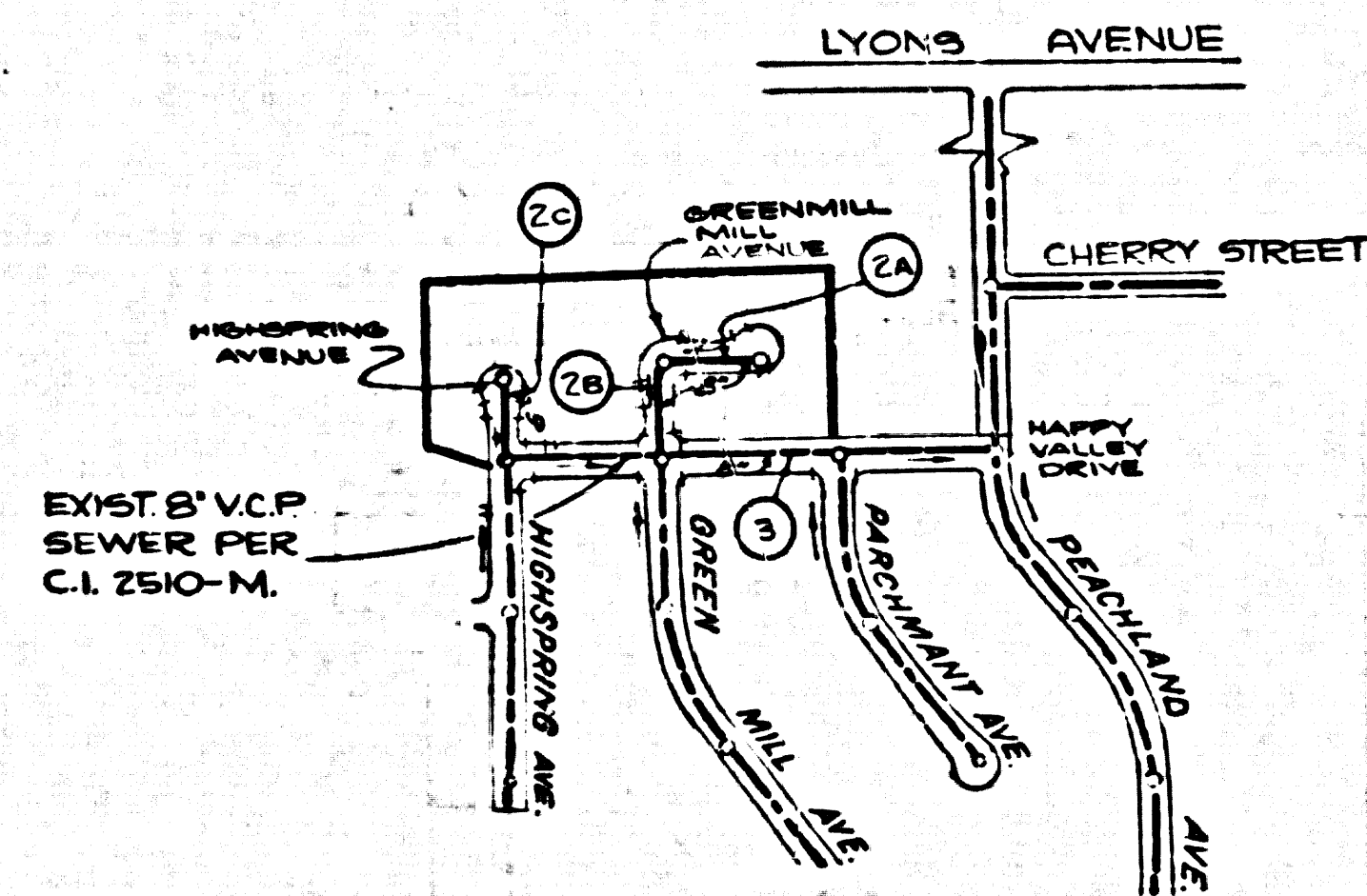


B.M. P.L. 3957 ELEV. 1247.207
 L+T IN N.C.S. LYONS AVE. ON C/L PROD.
 PEACHLAND AVE. 42 FT. N. C/L INT.

NEWHALL QUAD. 19.72



NOTE:
 NUMBERS IN CIRCLES
 INDICATE PAGE NUMBERS.

INDEX MAP
 SCALE: 1"=500'
 TRACT NO. 32272
 P.C. 9501

THE FOLLOWING LATEST REVISED STANDARD PLANS ON FILE IN THE OFFICE OF THE COUNTY ENGINEER SHALL APPLY IN THE CONSTRUCTION OF THIS PROJECT:

LEGEND	
MINIMUM PUBLIC SAFETY REQUIREMENTS	S-1
STANDARD MANHOLE STEPS	S-2
BEDDING FOR SEWER PIPE	S-17
CRADLING AND ENCASUREMENT	S-23
SPECIAL HOUSE LATERALS	S-25
ALLOWABLE TRENCH WIDTHS	S-33
SADDLES FOR HOUSE LATERALS	S-28
BRICK MANHOLE	S-3
WYE OR TEE SUPPORT	S-26
LOCKING MANHOLE FRAME AND COVER	S-36
NON-REINFORCED PRECAST CONCRETE MANHOLE	S-36

SANTA CLARITA VALLEY BLDG. DIST. NO. 8.2

- NOTES
- PROVIDE STAKES ON THE PROPERTY LINE OR PROPERTY LINES PRODUCED AT RIGHT ANGLES TO THE SEWER LINE AT THE CENTER LINE OF EACH MANHOLE.
 - NO REPRESENTATIVE OF THE COUNTY ENGINEER WILL SUEVEY OR LAY OUT ANY PORTION OF THE WORK.
 - THE PRIVATE ENGINEER SHALL FURNISH THE COUNTY ENGINEER WITH GRADE SHEETS AND STATIONING FOR ALL HOUSE LATERALS AND "T" BRANCHES AND SHALL PROVIDE STAKES FOR THEM AT THEIR PROPER LOCATIONS WITH STATIONING PLAINLY MARKED. ALL HOUSE LATERALS SHALL BE CONSTRUCTED IN A STRAIGHT ALIGNMENT AT RIGHT ANGLES FROM THE MAIN LINE SEWER EXCEPT AS SHOWN ON THE PLANS. HOUSE LATERALS FROM CHIMNEYS SHALL NOT HAVE AN ANGLE OF LESS THAN 45° WITH THE MAIN LINE SEWER. ANY CHANGE IN ALIGNMENT SHALL BE REQUESTED IN WRITING BY THE PRIVATE ENGINEER.
 - THE PRIVATE ENGINEER SHALL FURNISH THE HOUSE LATERAL DEPTH AT THE PROPERTY LINE BELOW THE TOP OF CURB ELEVATION FOR EACH HOUSE LATERAL ON THE GRADE SHEET.
 - NO REVISIONS SHALL BE MADE IN THESE PLANS WITHOUT THE APPROVAL OF THE COUNTY ENGINEER.
 - THE CONTRACTOR SHALL NOTIFY THE DIVISION BY TELEPHONE, 215-714-7233, AT LEAST TWENTY-FOUR HOURS BEFORE STARTING ANY WORK UNDER THIS CONTRACT.
 - ALL STRUCTURES SHALL BE EITHER BRICK MANHOLES PER S-3 OR PRE-CAST CONCRETE MANHOLES PER S-36, AS INDICATED.
 - ALL STRUCTURES SHALL BE EITHER BRICK OR PRE-CAST CONCRETE MANHOLES PER S-3 OR S-36, AS INDICATED.
 - MANHOLE TOPS IN UNIMPROVED RIGHTS-OF-WAY TO BE SIX INCHES ABOVE FINISHED GRADE.
 - USE EXTRA STRENGTH PIPE. ALL PIPE IS STANDARD DEPTH EXCEPT AS NOTED.
 - VERTIFIED CLAY PIPE JOINTS SHALL BE TYPE "OT" OR "OF" PER STANDARD SPECIFICATIONS, SEC. 208-2.
 - IF A POWER POLE IS WITHIN THREE FEET OF THE SEWER, THE SEWER SHALL BE ENCASED, PER S-23, CASE II TWO FEET ON EACH SIDE FROM THE POINT OF INTERFERENCE.
 - IF DURING THE COURSE OF CONSTRUCTION IT IS DETERMINED THAT THERE IS LESS THAN FOUR FEET OF COVER OVER THE TOP OF A MAIN LINE OR HOUSE LATERAL V.C.P. SEWER WHICH IS NOT INDICATED ON THE PLANS, THE PIPE SHALL BE ENCASED PER S-23, CASE II UNLESS OTHERWISE APPROVED BY THE COUNTY ENGINEER.
 - HOUSE LATERALS TO BE CONSTRUCTED WITH INVERTS AT PROPERTY LINE 6 FEET BELOW CURB GRADE EXCEPT AS NOTED.
 - RESURFACE ALL TRENCHES WITHIN PAVED AREAS TO MEET L.A. COUNTY ROAD DEPT. OR CALIFORNIA STATE HIGHWAY REQUIREMENTS IN ACCORDANCE WITH PERMITS.
 - SEWERS TO BE TESTED FOR LEAKAGE PER SEC. 208-14 OF STANDARD SPEC'S & SPECIAL PROVISIONS.
 - TEE OR WYE BRANCHES MAY BE USED FOR CONNECTIONS TO MAINLINE SEWER EXCEPT AS NOTED.
 - REFER TO SEC. 110-1.1 OF THE STANDARD SPEC. REGARDING SAFETY ORDERS.
 - FULL COMPLIANCE WITH SEC. 208-1.3.8 OF THE SPECIAL PROVISIONS WILL BE REQUIRED FOR BACKFILL IN STREETS. CERTIFICATION OF BACKFILL COMPLETION AND SAND EQUIVALENTS BY A QUALIFIED REGISTERED TESTING LABORATORY SHALL BE PROVIDED BY THE PERMITTEE PRIOR TO THE ISSUANCE OF A CERTIFICATE OF FINAL ACCEPTANCE.
 - PRIOR TO THE ISSUANCE OF THE REQUIRED SEWER CONSTRUCTION PERMIT BY THE COUNTY ENGINEER, THE CONTRACTOR SHALL OBTAIN A PERMIT TO EXCAVATE FROM THE STATE OF CALIFORNIA, DIVISION OF INDUSTRIAL SAFETY.
 - PRIOR TO THE ISSUANCE OF THE REQUIRED SEWER CONSTRUCTION PERMIT BY THE COUNTY ENGINEER, THE CONTRACTOR SHALL OBTAIN A CERTIFICATE OF WORKER'S COMPENSATION INSURANCE LISTING THE LOS ANGELES COUNTY ENGINEER, 23791 WEST VALENCIA BOULEVARD, VALENCIA, CALIFORNIA, 91355 AS THE CERTIFICATE HOLDER.

BEFORE BREAKING INTO OR CONSTRUCTION ON A COUNTY SANITATION DISTRICT SEWER AND PRIOR TO FINAL ACCEPTANCE OF THE EXISTING SANITATION DISTRICT PERMITS, SHALL BE NOTIFIED BY PHONE 362-8245 SO THAT REQUIRED INSPECTION CAN BE MADE.

NO CONNECTION FOR THE DISPOSAL OF INDUSTRIAL WASTES SHALL BE MADE TO SEWERS SHOWN ON THESE DRAWINGS UNTIL A PERMIT FOR INDUSTRIAL WASTE WATER DISCHARGE HAS BEEN ISSUED BY THE SANITATION DISTRICTS FOR SAID CONNECTION.

TRACT NO. 32272

PRIVATE CONTRACT NO. 9501

INDEX 249 S 121
 W.S. 62-A,3

2 SHEETS, 3 PAGES
 SCALE: VERT. 1"=4' HORIZ. 1"=40'
 JANUARY, 1978

PREPARED IN THE OFFICES OF
 V.T.N. LOS ANGELES
 5719 VAN NUYS BLVD. VAN NUYS, CALIF.

BY: *W.D. Koonce*
 REG. C.E. NO. 17988

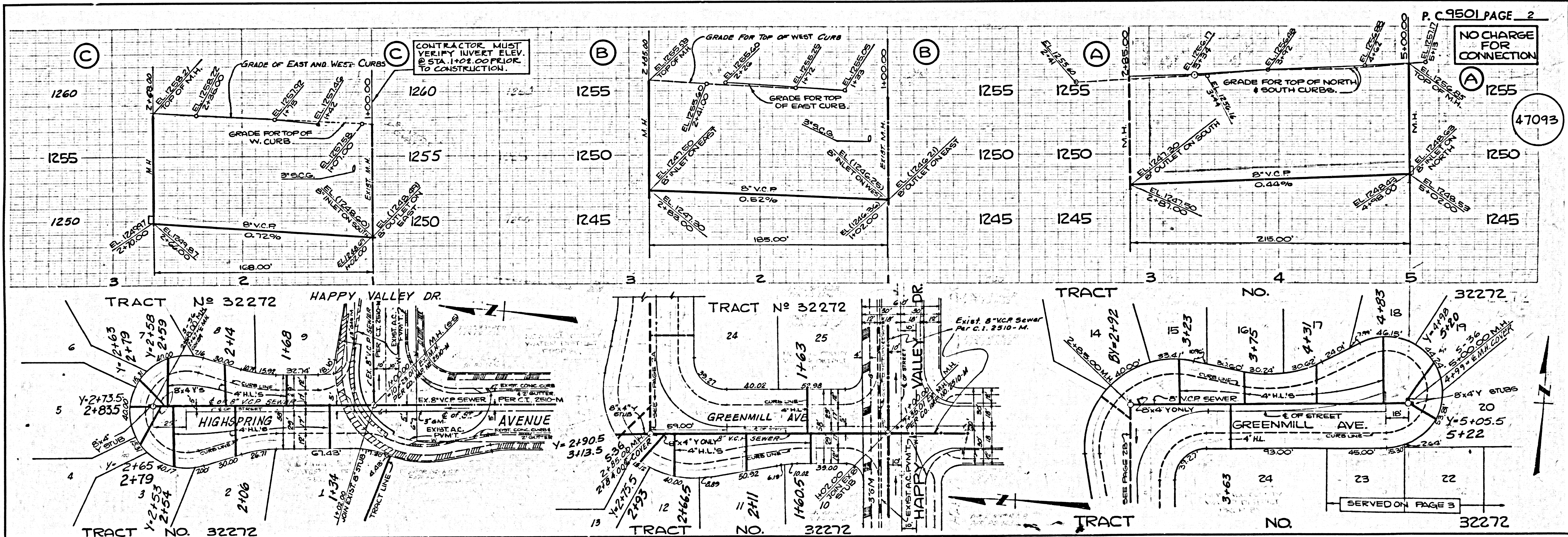
FOR LEGEND SEE PLAN NO. S-1

NOTE:
 GRADES TO WHICH THIS IMPROVEMENT IS TO BE CONSTRUCTED ARE SHOWN ON PLANS AND PROFILES. GRADE POINTS FOR TOP OF CURBS, CENTER LINE OF STREETS, OR CENTER LINE OF ALLEYS ARE SHOWN BY CIRCLES ON PROFILES. AT ALL POINTS BETWEEN DESIGNATED POINTS THE GRADE SHALL BE ESTABLISHED SO AS TO CONFORM TO A STRAIGHT LINE DRAWN BETWEEN SAID DESIGNATED POINTS. ELEVATIONS ARE IN FEET ABOVE U.S.C. & G.S. SEA LEVEL DATUM OF 1929. THIS DRAWING AND THE DATA HEREON ARE HEREBY MADE A PART OF THE SPECIFICATIONS. WORK SHALL BE CONSTRUCTED ACCORDING TO STANDARD SPECIFICATIONS DATED "SEPTEMBER 2, 1976" ON FILE IN THE OFFICE OF THE COUNTY ENGINEER AND SHALL BE PROSECUTED ONLY IN THE PRESENCE OF THE COUNTY ENGINEER. BEFORE WORK CAN BE STARTED, THE CONTRACTOR MUST OBTAIN A PERMIT TO EXCAVATE IN COUNTY STREETS FROM THE L.A. COUNTY ROAD DEPT., DISTRICT OFFICE NO. 2500 S. VAN NUYS BLVD. VAN NUYS, CALIF. 91311. SUFFICIENT TO COVER THE COST OF CONSTRUCTION INSPECTION AND RECORD PLANS. APPROVAL OF THIS PLAN BY THE COUNTY OF LOS ANGELES DOES NOT CONSTITUTE A REPRESENTATION AS TO THE ACCURACY OF THE LOCATION OF OR THE EXISTENCE OR NON-EXISTENCE OF ANY UNDERGROUND UTILITY PIPE, OR STRUCTURE WITHIN THE LIMITS OF THIS PROJECT. THIS NOTE APPLIES TO ALL PAGES. IF WORK IS TO BE DONE IN A STATE HIGHWAY, A PERMIT MUST BE OBTAINED FROM THE STATE OF CALIFORNIA, DIVISION OF HIGHWAYS, 126 SOUTH SPRING STREET, LOS ANGELES, CALIFORNIA.

COUNTY OF LOS ANGELES, CALIFORNIA
 STEPHEN J. KOONCE COUNTY ENGINEER J. D. PARKHURST, CHIEF ENGINEER
 CO. SAN. DIST. NO. 8.2
 APPROVED BY: *Stephen J. Koonce* 2/1/78 DATE APPROVED BY: *J. D. Parkhurst*
 DATE 2/1/78 OFFICE ENGINEER

SUBMITTED BY: *Bernard J. Valery*
 CHECKED BY: *Bernard J. Valery* 2/1/78 DATE
 REG. C.E. NO. 10652

J.N. 035802



NO CHARGE FOR CONNECTION

47093

SERVED ON PAGE 3

NO CHARGE FOR CONNECTIONS

47094

