

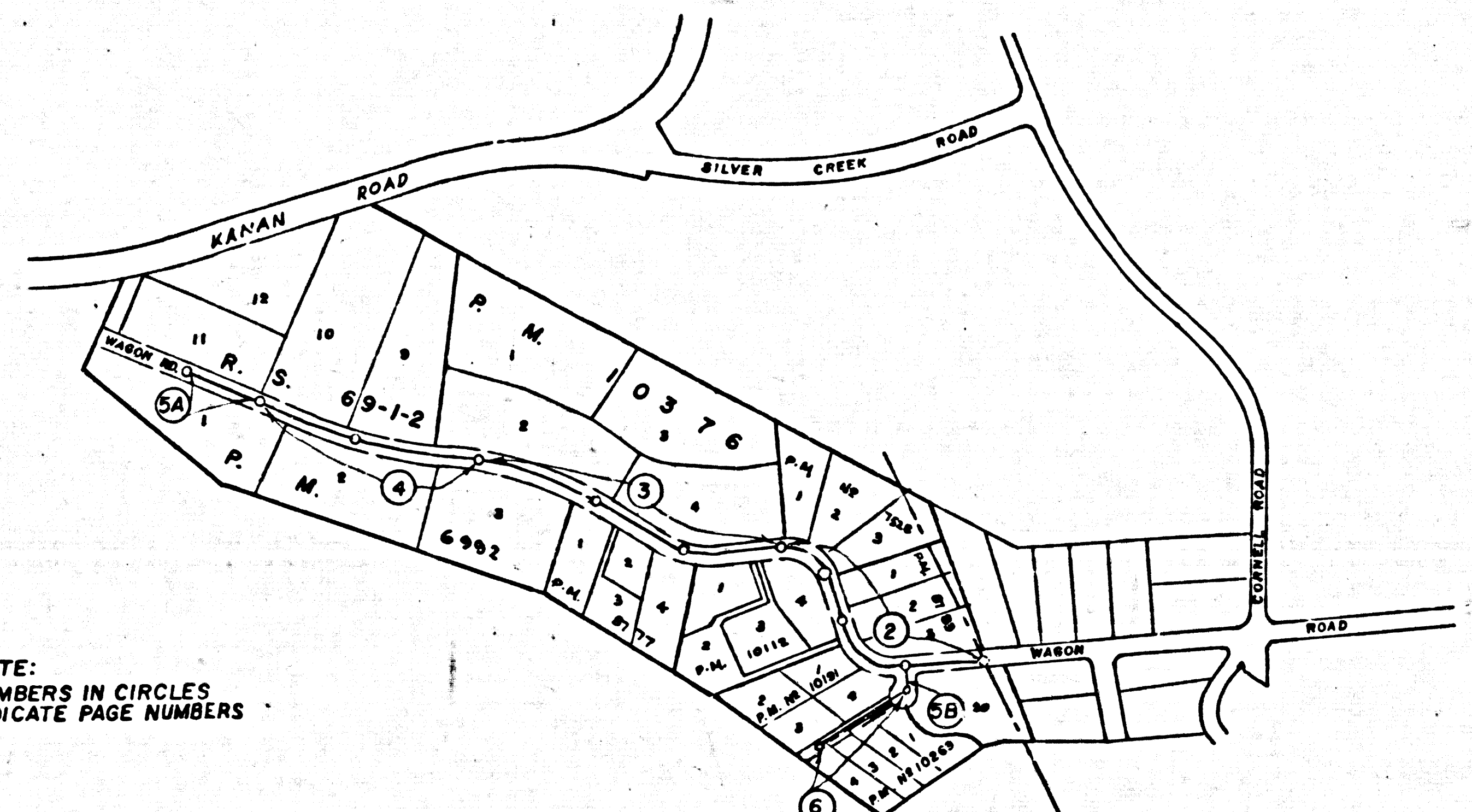
Martin L. Murphy, R.C.E. 18,594
Approved 12-14-78

PRIVATE CONTRACT NO. 9504

W.S. 90, A-3
3 SHEETS, 6 PAGES

47030

SCALE: VERT. 1"=4'
HORIZ. 1"=40'
JANUARY 22, 1978
PREPARED IN THE OFFICES OF
HARMAN RASNOW & ASSOCIATES
POST OFFICE BOX 190
AGOURA, CALIF. 91301
BY: *Terence R. O'Hall*
REG. C. E. No. 28,148



NOTE:
NUMBERS IN CIRCLES
INDICATE PAGE NUMBERS

INDEX MAP
SCALE 1"=500'
P.C. 9504

EXISTING 30" TRUNK SEWER
L.V.M.W.D. U-1 (542 C)

- MAIN LINE SEWER, ANY CHANGE IN ALIGNMENT SHALL BE REQUESTED IN WRITING BY THE PRIVATE ENGINEER.
- THE PRIVATE ENGINEER SHALL FURNISH THE HOUSE LATERAL DEPTH AT THE PROPERTY LINE BELOW THE TOP OF CURB ELEVATION FOR EACH HOUSE LATERAL ON THE GRADE SHEET.
- BEFORE WORK CAN BE STARTED, THE CONTRACTOR MUST OBTAIN A PERMIT TO EXCAVATE IN COUNTY STREETS FROM THE L.A. COUNTY ROAD DEPT., DISTRICT OFFICE NO. 3, AND PAY A FEE TO THE COUNTY ENGINEER, \$60.00 PER 140' OF STREETS.
- APPROVAL OF THIS PLAN BY THE COUNTY OF LOS ANGELES DOES NOT CONSTITUTE A REPRESENTATION AS TO THE ACCURACY OF THE LOCATION OR THE EXISTENCE OR NON-EXISTENCE OF ANY UNDERGROUND UTILITY PIPE, OR STRUCTURE WITHIN THE LIMITS OF THIS PROJECT. THIS NOTE APPLIES TO ALL PAGES.
- REFER TO SECTION 7-10.4.1 OF THE STANDARD SPECIFICATIONS, REGARDING SAFETY ORDERS.
- PRIOR TO ISSUING THE REQUIRED SEWER CONSTRUCTION PERMIT BY THE COUNTY ENGINEER, THE CONTRACTOR SHALL OBTAIN A PERMIT TO EXCAVATE FROM THE STATE OF CALIFORNIA, DIVISION OF INDUSTRIAL SAFETY.
- UNDERGROUND UTILITIES WITHIN THE PROJECT ARE:
A. LAS VIRGENES MUNICIPAL WATER DIST.
B. THE CONTRACTOR SHALL FURNISH A CERTIFICATE OF WORKERS COMPENSATION INSURANCE WITH THE COUNTY ENGINEER.

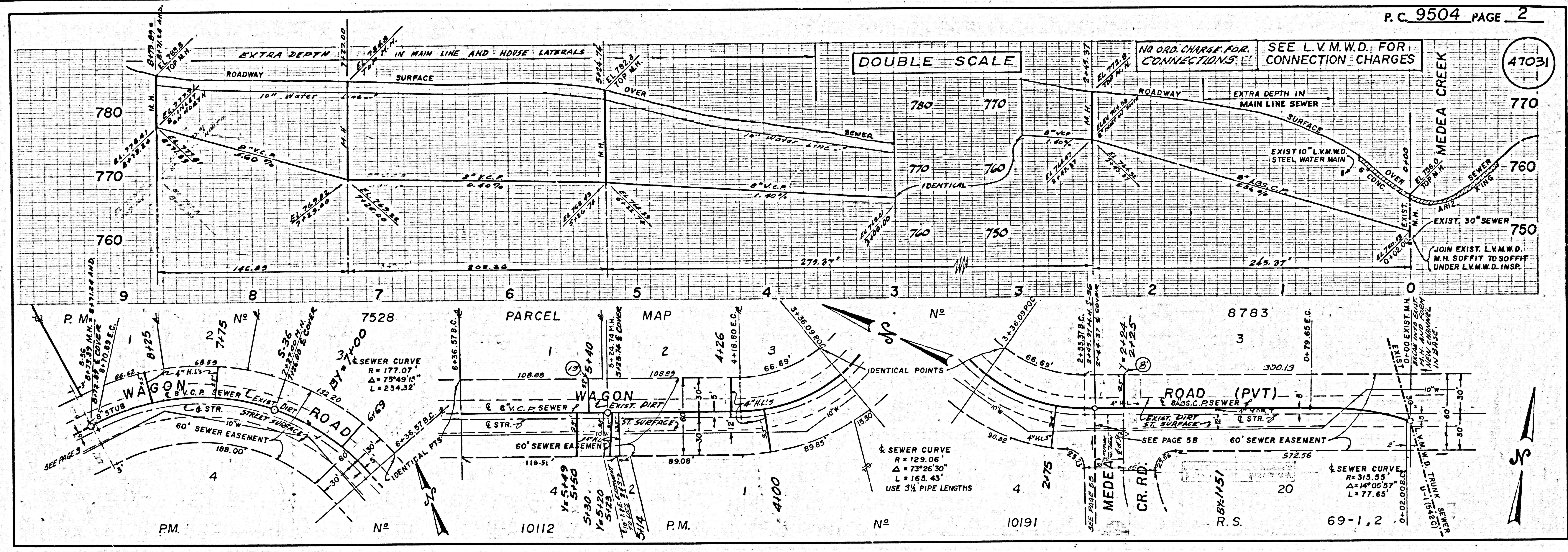
CONSTRUCTION NOTES:

- WORK SHALL BE CONSTRUCTED ACCORDING TO THE STANDARD SPECIFICATIONS FOR PUBLIC WORKS CONSTRUCTION (1976 EDITION) WITH '77', 78 & '79. THE COUNTY ENGINEER'S SPECIAL PROVISIONS FOR THE CONSTRUCTION OF SANITARY SEWERS DATED SEPTEMBER 21, 1978, AND SHALL BE PROSECUTED ONLY IN THE PRESENCE OF THE COUNTY ENGINEER.
- THE CONTRACTOR SHALL NOTIFY THE DESIGN DIVISION BY TELEPHONE, (818) 974-7288, AT LEAST TWENTY-FOUR HOURS BEFORE STARTING ANY WORK UNDER THE CONTRACT.
- HOUSE LATERALS TO BE CONSTRUCTED WITHIN PROPERTY LINE 4 FEET BELOW CURB GRADE EXCEPT AS NOTED.
- WYE OR TEE BRANCHES MAY BE USED FOR CONNECTIONS TO MAINLINE SEWERS EXCEPT AS NOTED.
- ALL STRUCTURES SHALL BE EITHER BRICK MANHOLES PER S-3 OR PRECAST CONCRETE MANHOLES PER S-36, EXCEPT AS NOTED.
- PROVIDE STAKES ON THE PROPERTY LINE OR PROPERTY LINES PRODUCED AT RIGHT ANGLES TO THE SEWER LINE AT THE CENTER LINE OF EACH MANHOLE.
- MANHOLE TOPS IN UNIMPROVED RIGHTS OF WAY TO BE SIX INCHES ABOVE FINISHED GRADE.
- VITRIFIED CLAY PIPE JOINTS SHALL BE TYPE "D", "E", OR "G" PER STANDARD SPECIFICATIONS SECTION 208-2.
- IF A POWER POLE IS WITHIN THREE FEET OF THE SEWER, THE SEWER SHALL BE "CASED", PER S-23, CASE II, TWO FEET ON EACH SIDE FROM THE POINT OF INTERFERENCE.
- IF DURING THE COURSE OF CONSTRUCTION IT IS DETERMINED THAT THERE IS LESS THAN FOUR FEET OF COVER OVER THE TOP OF A MAIN LINE OR HOUSE LATERAL V.C.P. SEWER WHICH IS NOT INDICATED ON THE PLANS, THE PIPE SHALL BE ENCASED PER S-23, CASE II UNLESS OTHERWISE APPROVED BY THE COUNTY ENGINEER.
- ALL JOINTS BETWEEN CAST IRON PIPE AND VITRIFIED CLAY PIPE SHALL BE MADE WITH A RUBBER SLEEVE JOINT, TYPE "C" OR "D", (WITH BUSHING IF NECESSARY) PER STANDARD SPECIFICATIONS, SECTION 208-2.
- SEWERS TO BE TESTED FOR LEAKAGE PER SECTION 206-1.4 OF THE STANDARD SPECIFICATIONS AND SPECIAL PROVISIONS.
- RESURFACE ALL TRENCHES WITHIN PAVED AREAS TO MEET L.A. COUNTY ROAD DEPT. OR CALIFORNIA STATE HIGHWAY REQUIREMENTS IN ACCORDANCE WITH PERMITS.
- FULL COMPLIANCE WITH SECTION 206-1.3.B OF THE SPECIAL PROVISIONS WILL BE REQUIRED FOR BACKFILL IN STREETS. CERTIFICATION OF BACKFILL COMPACTION AND SAND EQUIVALENTS BY A QUALIFIED, REGISTERED TESTING LABORATORY SHALL BE PROVIDED BY THE PERMITTEE PRIOR TO THE ISSUANCE OF A CERTIFICATE OF PARTIAL ACCEPTANCE.

THE FOLLOWING LATEST REVISED STANDARD PLANS ON FILE IN THE OFFICE OF THE COUNTY ENGINEER SHALL APPLY IN THE CONSTRUCTION OF THIS PROJECT:

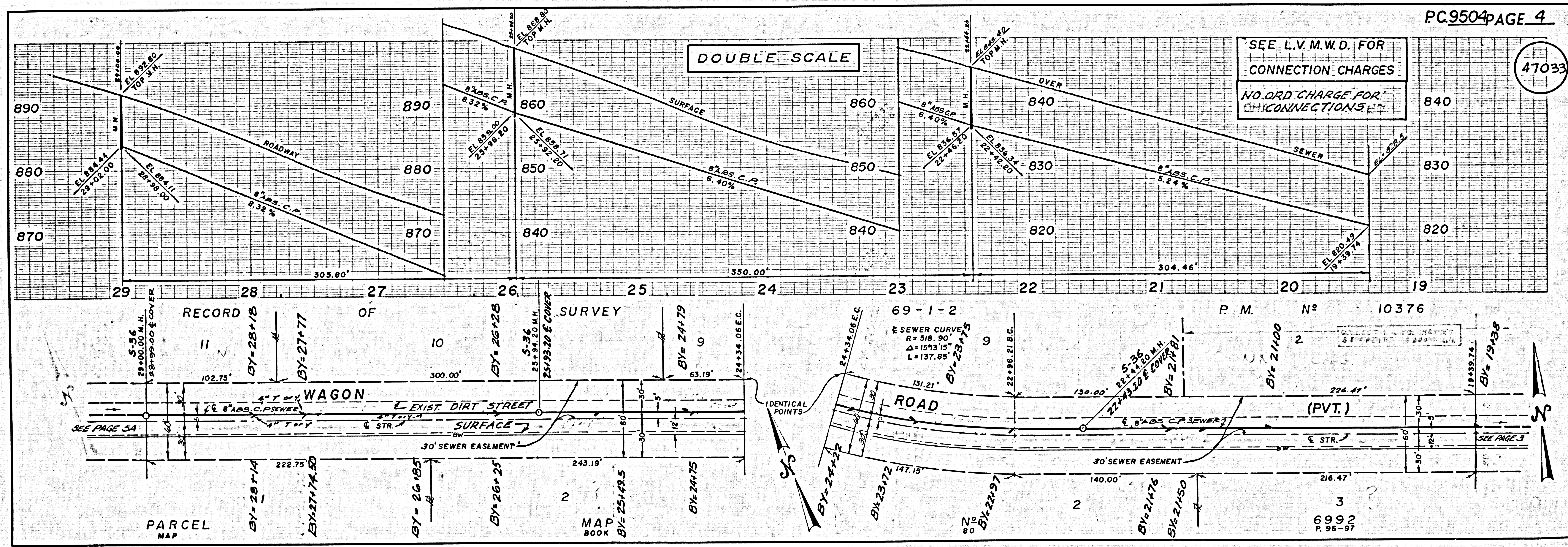
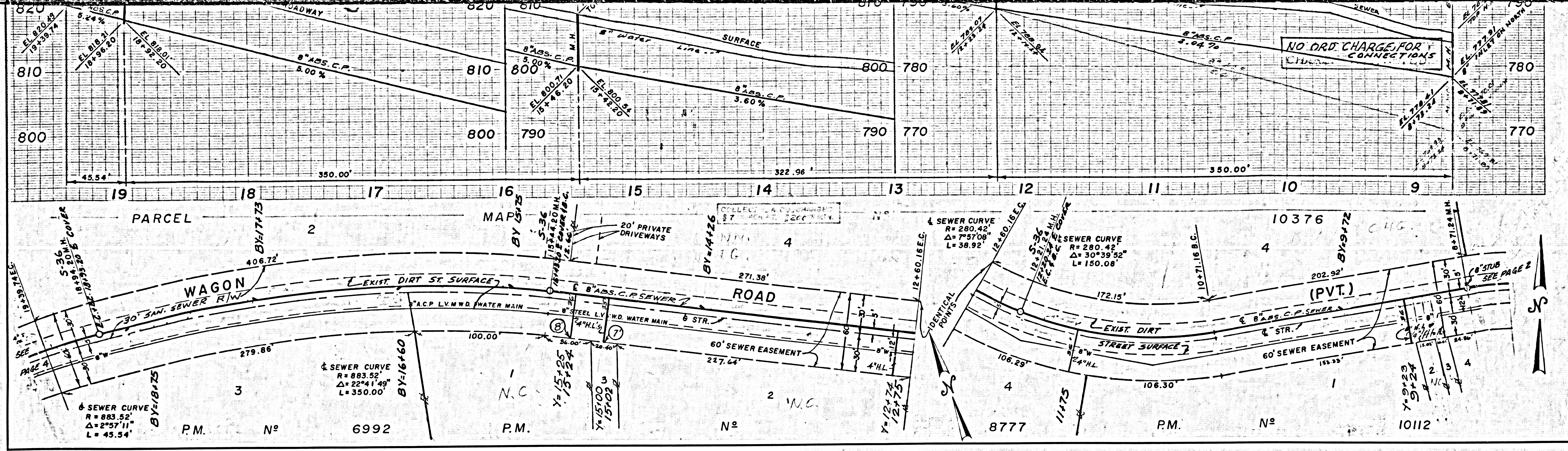
LEGEND	SECTION
MINIMUM PUBLIC SAFETY REQUIREMENTS	S-3
BRICK MANHOLE	S-3
STANDARD MANHOLE STEP	S-17
SEWING FOR SEWER PIPE	S-37
GRADING AND ENCASING	S-26
WYE OR TEE SUPPORT	S-36
ALLOWABLE TRENCH WIDTHS	S-23
LOCKING MANHOLE FRAME AND COVER	S-38
NON-REINFORCED PRECAST CONCRETE MANHOLE	S-36

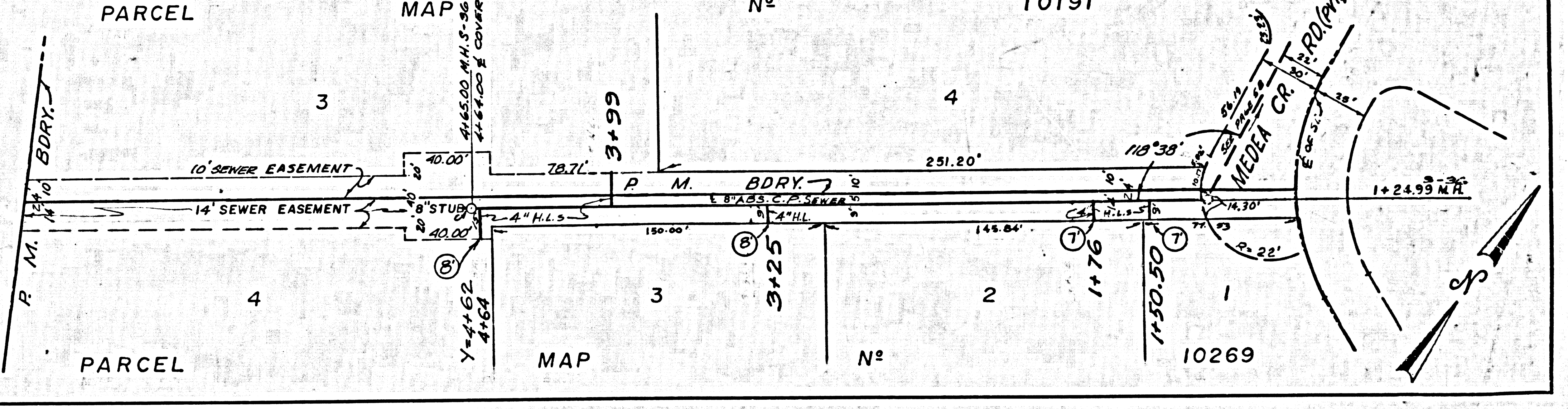
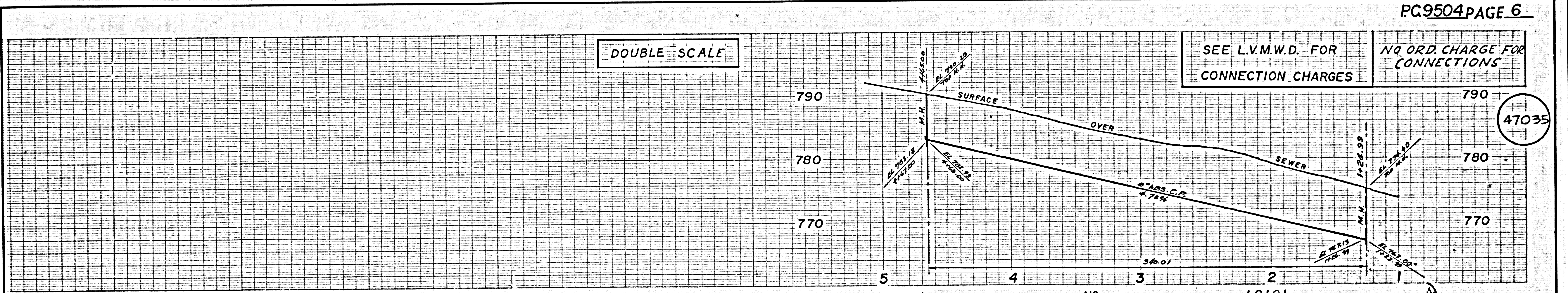
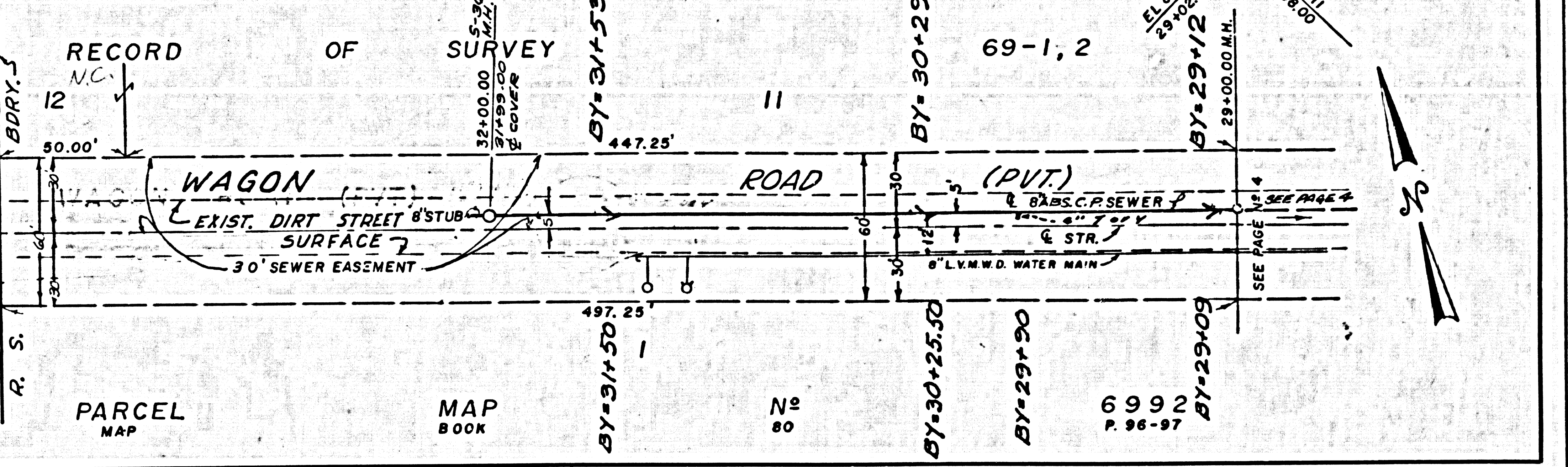
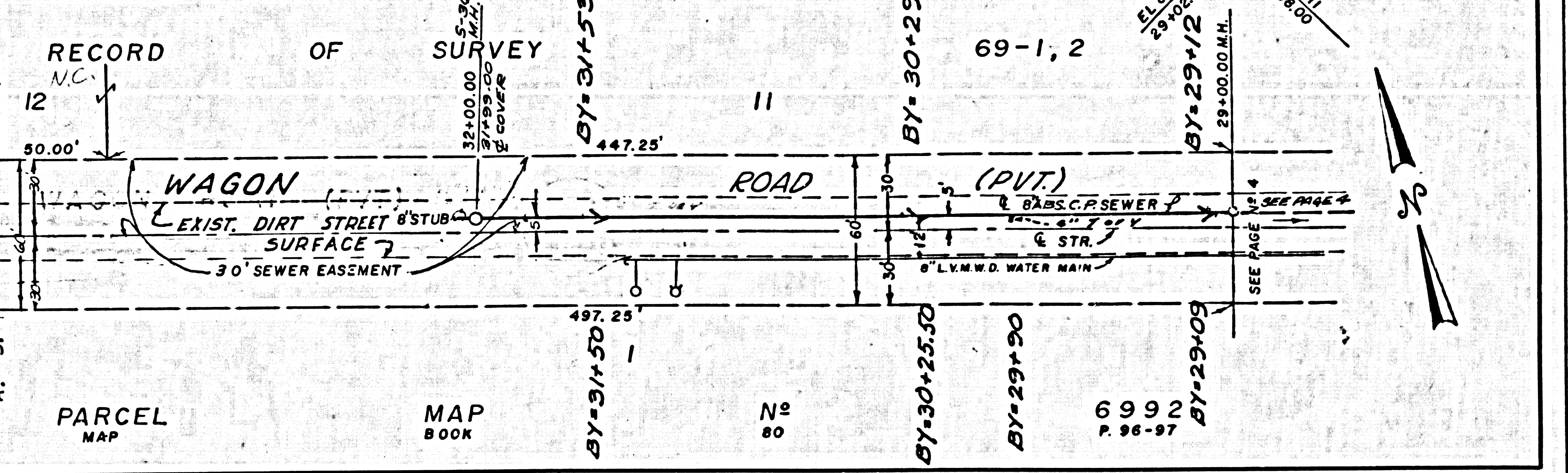
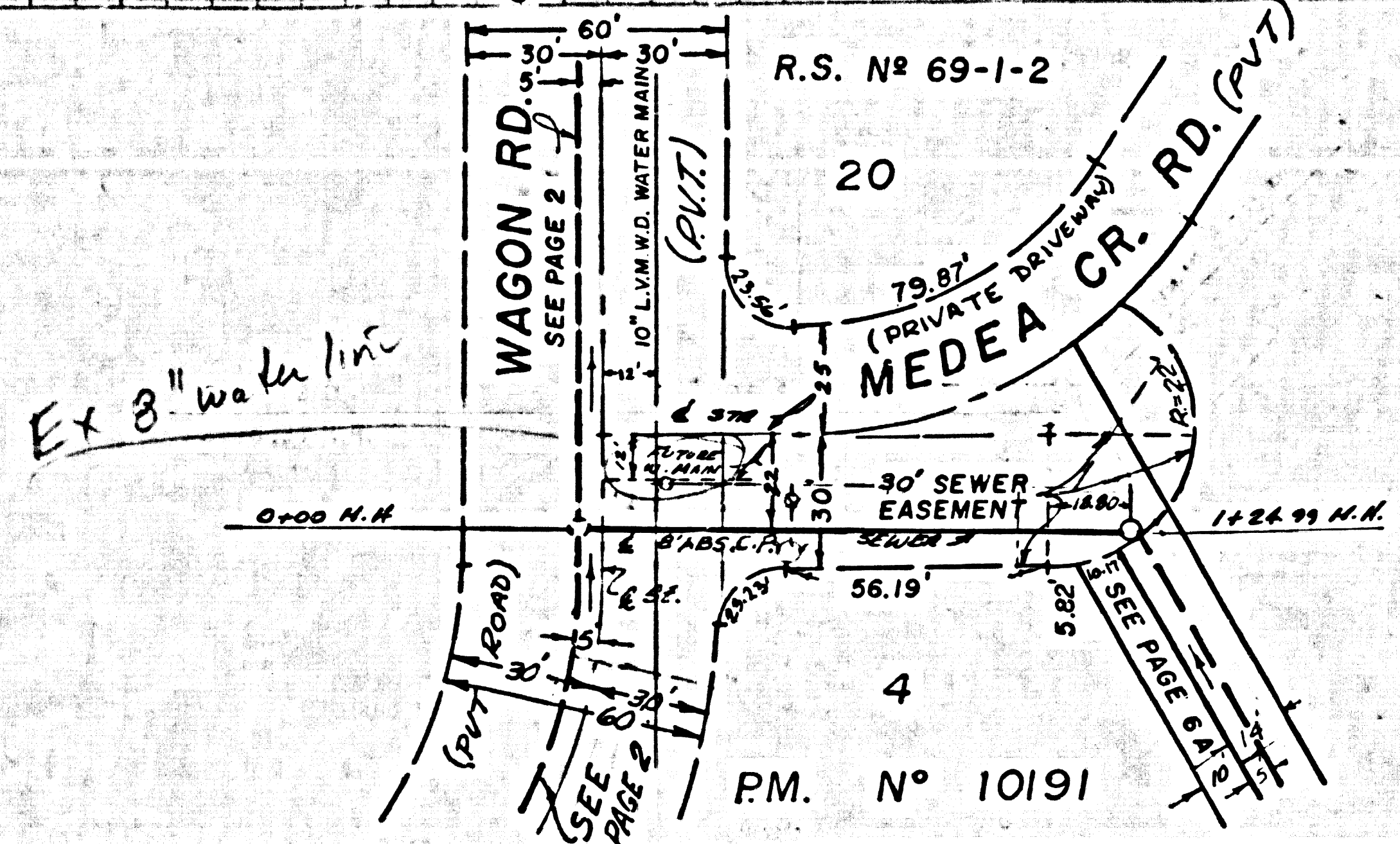
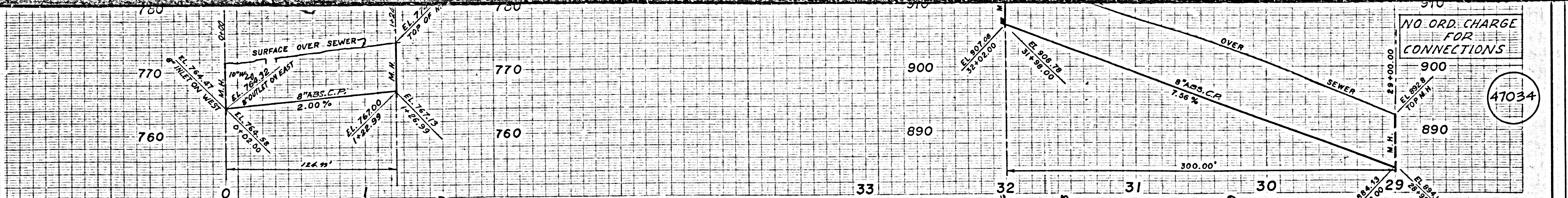
COUNTY OF LOS ANGELES, CALIFORNIA
STEVEN J. KOONCE, COUNTY ENGINEER
LAS VIRGENES MUNICIPAL WATER DIST.
APPROVED: *Charles W. Knapp* 11-14-78
R.C.E. No. 11,100
CHECKED: *Barbara J. V. ...* 11/14/78
REG. C.E. No. 30,653
DATE: 11-17-78
REV: 12-10-78
CALABASAS BLDG. DIST. 9.1 J.N. 0358.01



P.C. 9504 PAGE 2

47031





L.A. COUNTY SEWER SHEET NO. 8 SOUTHERN CALIFORNIA BLUEPRINT CO. 11-77