

TRACT No. 34362  
PRIVATE CONTRACT No. 9506

W.S. 38-C4  
Co SHEETS; 12 PAGES  
SCALE: VERT. 1"=8'  
HORIZ. 1"=40'  
JANUARY, 1978  
PREPARED IN THE OFFICES OF  
**KEMMERER ENGINEERING CO., INC.**  
6100 S. PAINTER AVE. WHITTIER, CA. 90608  
BY: *Robert K. Finner*  
REG. C. E. No. 11247

47098

THE FOLLOWING LATEST REVISED STANDARD PLANS ON FILE IN THE OFFICE OF THE COUNTY ENGINEER SHALL APPLY IN THE CONSTRUCTION OF THIS PROJECT:

|   |      |
|---|------|
| MINIMUM PUBLIC SAFETY REQUIREMENTS      | 5-1  |
| BRICK MANHOLE                           | 5-2  |
| STANDARD MANHOLE STEP                   | 5-17 |
| BEDDING FOR SEWER PIPE                  | 5-21 |
| CRADLING AND ENCASEMENT                 | 5-23 |
| WYE OR TEE SUPPORT                      | 5-26 |
| ALLOWABLE TRENCH WIDTHS                 | 5-28 |
| ENCASING MANHOLE FRAME AND COVER        | 5-28 |
| NON-REINFORCED PRECAST CONCRETE MANHOLE | 5-36 |
| PRECAST CONCRETE SHALLOW MANHOLE        | 5-38 |
| CHIMNEY PIPE AND BASE                   | 5-27 |

COUNTY OF LOS ANGELES, CALIFORNIA  
STEPHEN J. KOONCE COUNTY ENGINEER  
JOHN D. PARKHURST, CHIEF ENGINEER  
APPROVED *John D. Parkhurst* 8/1/78  
APPROVED *Robert K. Finner* 8/1/78  
OFFICE ENGINEER  
CHECKED *Thom S. Hand* 7/10/78 DATE  
REG. C. E. NO. 11516  
LA PLACENTE BLDG. DIST. 2 J.N. 0230.02

**GENERAL NOTES: DOUBLE SCALE**

- ELEVATIONS ARE IN FEET ABOVE U.S.C. & G.S. SEA LEVEL DATUM OF 1929.
- NO INTERSECTIONS SHALL BE MADE IN THESE PLANS WITHOUT THE APPROVAL OF THE COUNTY ENGINEER.
- NO REPRESENTATIVE OF THE COUNTY ENGINEER WILL SURVEY OR LAY OUT ANY PORTION OF THE WORK.
- GRADES TO WHICH THIS IMPROVEMENT IS TO BE CONSTRUCTED ARE SHOWN ON PLANS AND PROFILES. GRADE POINTS FOR TOP OF CURBS, CENTER LINE OF STREETS, OR CENTER LINE OF ALLEYS ARE SHOWN BY CIRCLES ON PROFILES. AT ALL POINTS BETWEEN DESIGNATED POINTS THE GRADE SHALL BE ESTABLISHED SO AS TO CONFORM TO A STRAIGHT LINE DRAWN BETWEEN SAID DESIGNATED POINTS.
- THE PRIVATE ENGINEER SHALL FURNISH THE COUNTY ENGINEER WITH GRADE SHEETS AND STATIONING FOR ALL HOUSE LATERALS AND "T" OR "Y" BRANCHES AND SHALL PROVIDE STAKES FOR THEM AT THEIR PROPER LOCATIONS WITH STATIONING PLAINLY MARKED. ALL HOUSE LATERALS SHALL BE CONSTRUCTED IN A STRAIGHT ALIGNMENT AT RIGHT ANGLES FROM THE MAIN LINE SEWER EXCEPT AS SHOWN ON THE PLANS. HOUSE LATERALS FROM CHIMNEYS SHALL NOT HAVE AN ANGLE OF LESS THAN 45° WITH THE MAIN LINE SEWER. ANY CHANGE IN ALIGNMENT SHALL BE REQUESTED IN WRITING BY THE PRIVATE ENGINEER.
- THE PRIVATE ENGINEER SHALL FURNISH THE HOUSE LATERAL DEPTH AT THE PROPERTY LINE BELOW THE TOP OF CURB ELEVATION FOR EACH HOUSE LATERAL ON THE GRADE SHEET.
- BEFORE WORK CAN BE STARTED, THE CONTRACTOR MUST OBTAIN A PERMIT TO EXCAVATE IN COUNTY STREETS FROM THE L.A. COUNTY ROAD DEPT., DISTRICT OFFICE NO. 1, AND PAY A FEE TO THE COUNTY ENGINEER, 200 E. DOWNTOWN AVE., 5TH FLOOR, REGIONAL OFFICE, TO COVER THE COST OF CONSTRUCTION INSPECTION AND RECORD PLANS.
- IF WORK IS TO BE DONE IN A STATE HIGHWAY, A PERMIT MUST BE OBTAINED FROM THE STATE OF CALIFORNIA, DIVISION OF HIGHWAYS, 120 SOUTH SPRING STREET, LOS ANGELES, CALIFORNIA.
- APPROVAL OF THIS PLAN BY THE COUNTY OF LOS ANGELES DOES NOT CONSTITUTE A REPRESENTATION AS TO THE ACCURACY OF THE LOCATION OF OR THE EXISTENCE OR NON-EXISTENCE OF ANY UNDERGROUND UTILITY PIPE, OR STRUCTURE WITHIN THE LIMITS OF THIS PROJECT. THE NOTE APPLIES TO ALL PAGES.
- REFER TO SECTION 104.01 OF THE STANDARD SPECIFICATIONS, REGARDING SAFETY ORDERS.
- PLACE TO THE INSURANCE OF THE EMPLOYER'S SERVICE COMPENSATION FURNISHED BY THE COUNTY ENGINEER, THE CONTRACTOR SHALL OBTAIN A PERMIT TO EXCAVATE FROM THE DEPT. OF CALIFORNIA DIVISION OF INDUSTRIAL SAFETY AND SHALL FILE A CERTIFICATE OF APPLICABLE COMPENSATION INSURANCE WITH THE COUNTY ENGINEER.
- (1/4") INDICATES HOUSE LATERALS TO BE CONSTRUCTED WITH A GRADE OF 1/4" PER FOOT TO PROPERTY LINE.
- (1/2") INDICATES HOUSE LATERAL NOT TO BE CONSTRUCTED UPSTREAM OF THAT STATION.

**CONSTRUCTION NOTES:**

- WORK SHALL BE CONSTRUCTED ACCORDING TO THE STANDARD SPECIFICATIONS FOR PUBLIC WORKS CONSTRUCTION (1976 EDITION) AND COUNTY ENGINEER SPECIAL PROVISIONS FOR THE CONSTRUCTION OF SANITARY SEWERS DATED SEPTEMBER 21, 1976. AND SHALL BE PROSECUTED ONLY IN THE PRESENCE OF THE COUNTY ENGINEER.
- THE CONTRACTOR SHALL NOTIFY THE ENVIRONMENTAL DEVELOPMENT DIVISION, PHONE (213) 974-7153, AT LEAST TWENTY-FOUR HOURS BEFORE STARTING ANY WORK UNDER THIS CONTRACT.
- HOUSE LATERALS TO BE CONSTRUCTED WITH INVERTS AT PROPERTY LINE & FEET BELOW CURB GRADE EXCEPT AS NOTED.
- WYE OR TEE BRANCHES MAY BE USED FOR CONNECTIONS TO MAINLINE SEWERS EXCEPT AS NOTED.
- ALL STRUCTURES SHALL BE EITHER BRICK MANHOLES PER S-3 OR PRECAST CONCRETE MANHOLES PER S-36, EXCEPT AS NOTED.
- PROVIDE STAKES ON THE PROPERTY LINE OR PROPERTY LINES PRODUCED AT RIGHT ANGLES TO THE SEWER LINE AT THE CENTER LINE OF EACH MANHOLE.
- MANHOLE TOPS IN UNIMPROVED RIGHTS OF WAY TO BE SIX INCHES ABOVE FINISHED GRADE.
- VITRIFIED CLAY PIPE JOINTS SHALL BE TYPE "B", "P", OR "T" PER STANDARD SPECIFICATIONS SECTION 306-2.
- IF A POWER POLE IS WITHIN THREE FEET OF THE SEWER, THE SEWER SHALL BE ENCASED, PER S-23, CASE II, TWO FEET ON EACH SIDE FROM THE POINT OF INTERFERENCE.
- IF DURING THE COURSE OF CONSTRUCTION IT IS DETERMINED THAT THERE IS LESS THAN FOUR FEET OF COVER OVER THE TOP OF A MAIN LINE OR HOUSE LATERAL V.C.P. SEWER WHICH IS NOT INDICATED ON THE PLANS, THE PIPE SHALL BE ENCASED PER S-23, CASE II UNLESS OTHERWISE APPROVED BY THE COUNTY ENGINEER.
- ALL JOINTS BETWEEN CAST IRON PIPE AND VITRIFIED CLAY PIPE SHALL BE MADE WITH A RUBBER SLEEVE JOINT, TYPE "C" OR "D", WITH GASKETING IF NECESSARY PER STANDARD SPECIFICATIONS SECTION 306-3.
- SEWERS TO BE TESTED FOR LEAKAGE PER SECTION 306-1.6. OF THE STANDARD SPECIFICATIONS AND SPECIAL PROVISIONS.
- RESURFACE ALL TRENCHES WITHIN PAVED AREAS TO MEET L.A. COUNTY ROAD DEPT. OR CALIFORNIA STATE HIGHWAY REQUIREMENTS IN ACCORDANCE WITH PERMITS.
- FULL COMPLIANCE WITH SECTION 306-1.5.B OF THE SPECIAL PROVISIONS WILL BE REQUIRED FOR BACKFILL IN STREETS. CERTIFICATION OF BACKFILL COMPACTION AND SAND EQUIVALENTS BY A QUALIFIED, REGISTERED TESTING LABORATORY SHALL BE PROVIDED BY THE PERMITTEE PRIOR TO THE ISSUANCE OF A CERTIFICATE OF PARTIAL ACCEPTANCE.
- SPECIAL BACKFILL IN DESIGNATED AREAS:  
A. BACKFILL TRENCH AND REPLACE OTHER EARTH REMOVED SO AS TO ACHIEVE THE NATURAL OR FINISHED GRADES AND SLOPES SHOWN ON THE ORIGINAL PLANS APPROVED FOR THIS TRACT BY THE BUILDING AND SAFETY DIVISION.  
B. ALL BACKFILL AND EARTH REPLACED SHALL BE COMPACTED TO A MINIMUM OF 90% MAXIMUM DENSITY PER A.S.T.M. STANDARD METHOD OF TESTS D-1557-67 AS APPROVED. ACCEPTABLE CERTIFICATION OF EACH COMPACTION SHALL BE SUBMITTED TO THE ENVIRONMENTAL DEVELOPMENT DIVISION.

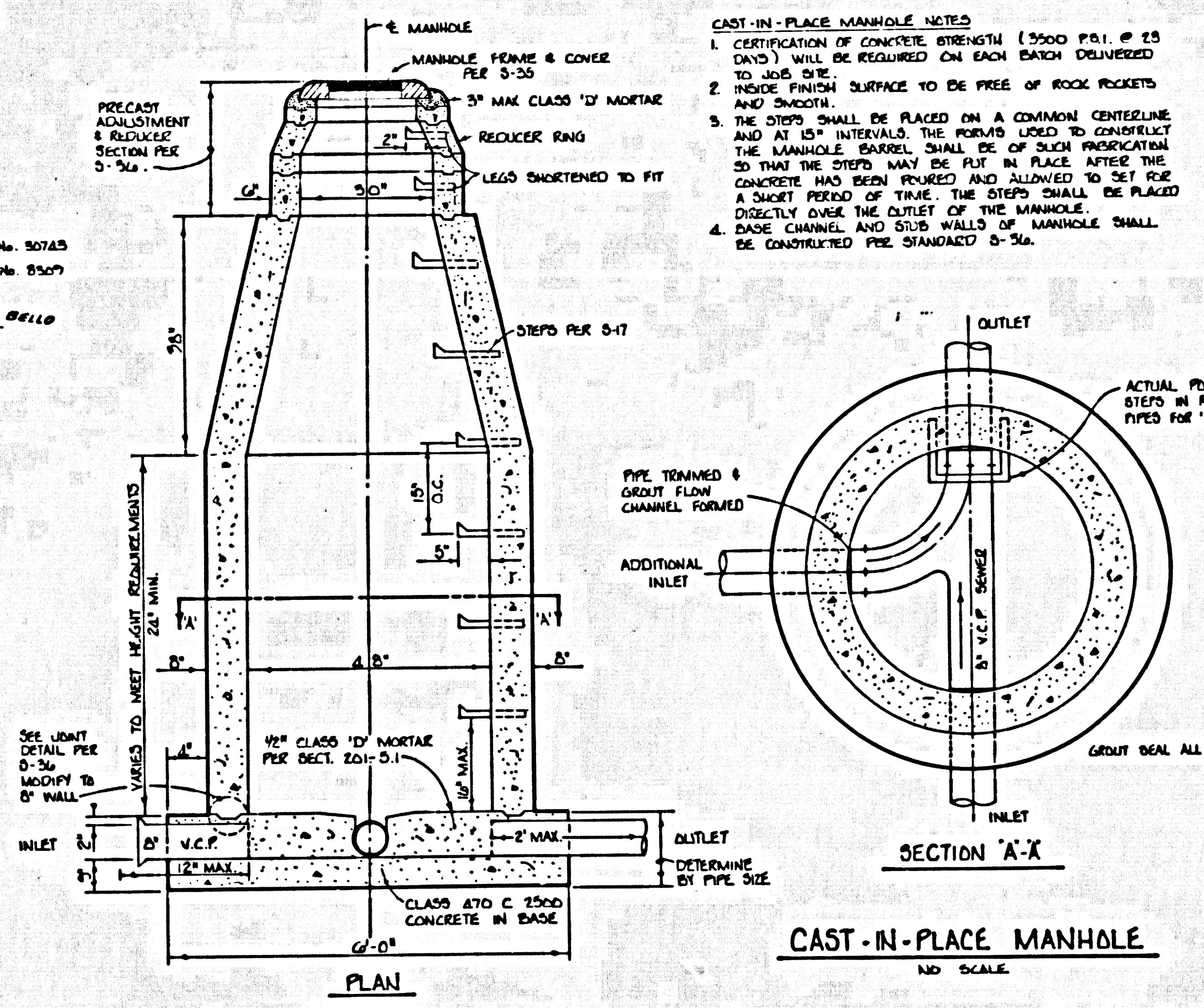
**PRIVATE ENGINEERS NOTICE TO CONTRACTORS**

THE EXISTENCE AND APPROXIMATE LOCATIONS OF UNDERGROUND UTILITIES OR STRUCTURES SHOWN ON THESE PLANS WERE DETERMINED BY A SEARCH OF AVAILABLE PUBLIC RECORDS TO THE BEST OF OUR KNOWLEDGE THERE ARE NO EXISTING UNDERGROUND UTILITIES OR STRUCTURES EXCEPT AS SHOWN ON THESE PLANS. THE CONTRACTOR IS REQUIRED TO TAKE DUE PRECAUTIONARY MEASURES TO PROTECT THE UTILITIES OR STRUCTURES SHOWN AND ANY OTHER UTILITIES OR STRUCTURES NOT OF RECORD OR NOT SHOWN ON THESE PLANS.

*Robert K. Finner* 11540  
ROBERT K. FINNER E.C.E. No. DATE

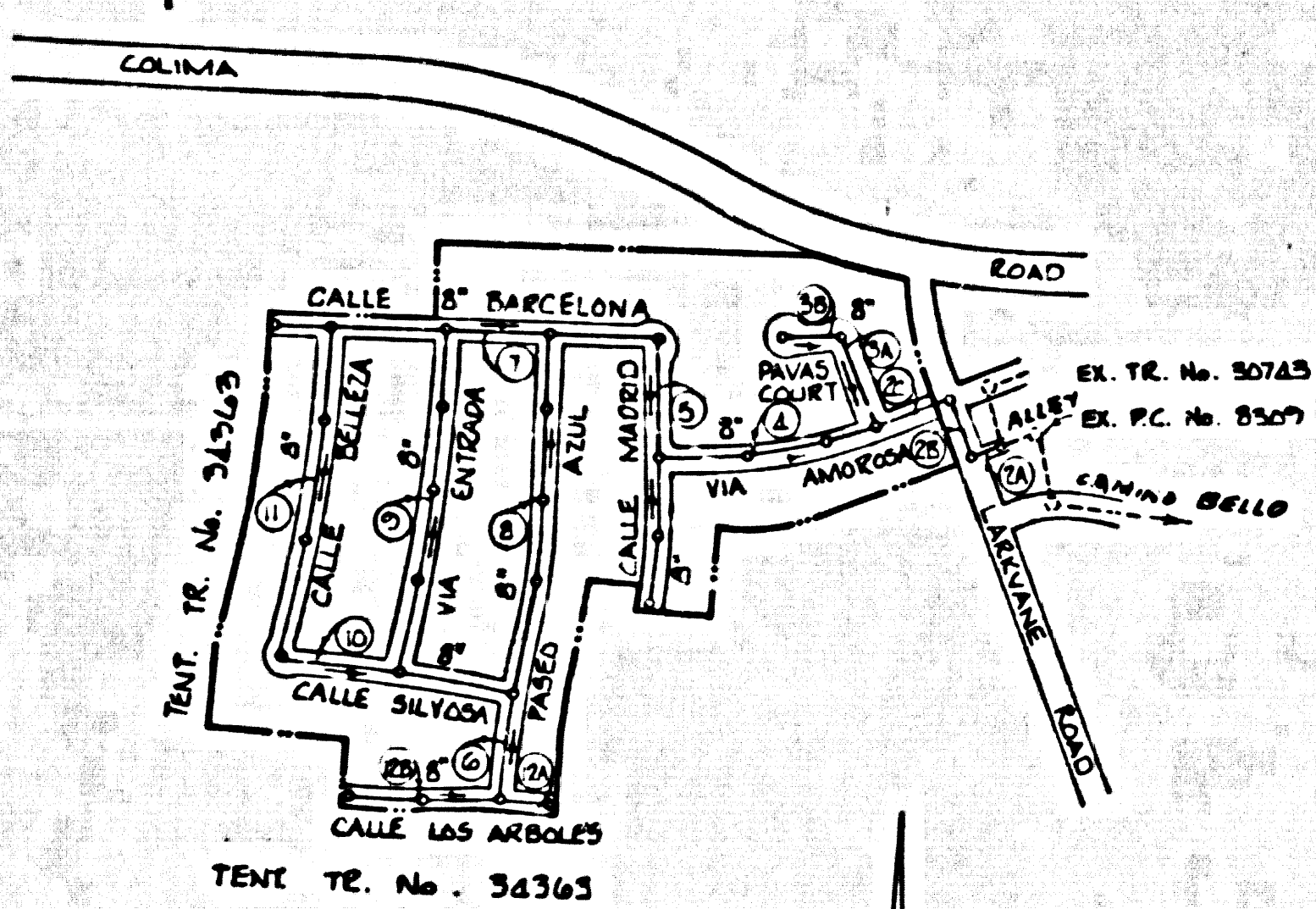
**CAST-IN-PLACE MANHOLE NOTES**

- CERTIFICATION OF CONCRETE STRENGTH (3500 P.S.I. # 25 DAYS) WILL BE REQUIRED ON EACH BATCH DELIVERED TO JOB SITE.
- INSIDE FINISH SURFACE TO BE FREE OF ROCK POCKETS AND BUBBLES.
- THE STEPS SHALL BE PLACED ON A COMMON CENTERLINE AND AT 15" INTERVALS. THE FORMS USED TO CONSTRUCT THE MANHOLE BARREL SHALL BE OF SUCH DIMENSIONAL SO THAT THE STEPS MAY BE PUT IN PLACE AFTER THE CONCRETE HAS BEEN PLACED AND ALLOWED TO SET FOR A SHORT PERIOD OF TIME. THE STEPS SHALL BE PLACED DIRECTLY OVER THE OUTLET OF THE MANHOLE.
- BASE CHANNEL AND SIDE WALLS OF MANHOLE SHALL BE CONSTRUCTED PER STANDARD S-36.

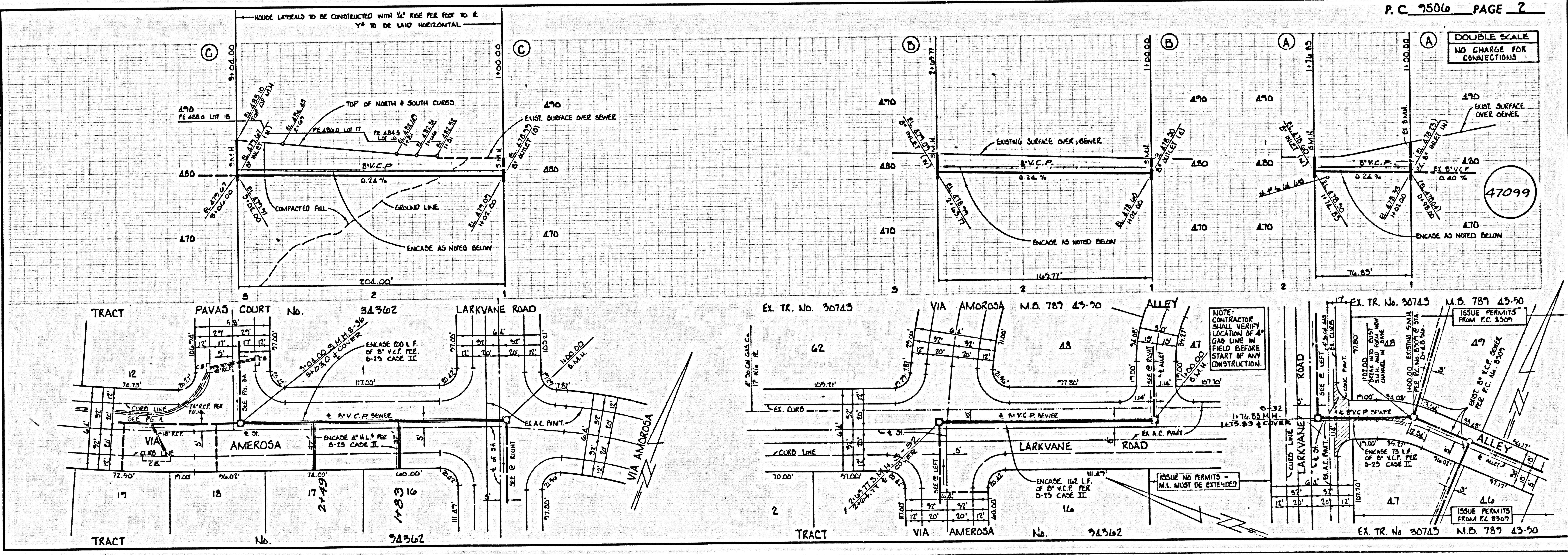


**CAST-IN-PLACE MANHOLE**  
NO SCALE

B.M. C.G. 4040 ELEV. 487.016  
RD. D.M. TAG 2' E/D B.C.R. C.S.E. COR.  
COLUMA ROAD & LARKVANE RD. 44' E.  
& 43' S/D & INT.  
OTTERBEIN QUAD. 1975



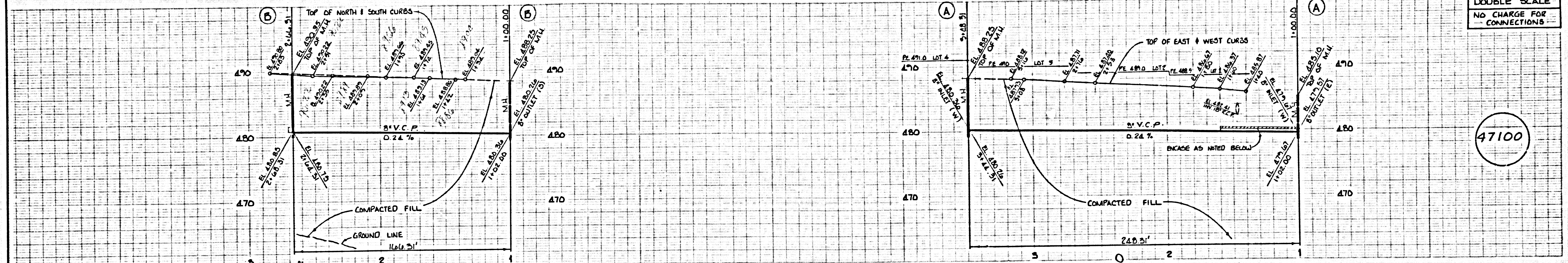
**INDEX MAP**  
TRACT No. 34362  
P.C. No. 9506  
SCALE: 1"=400'



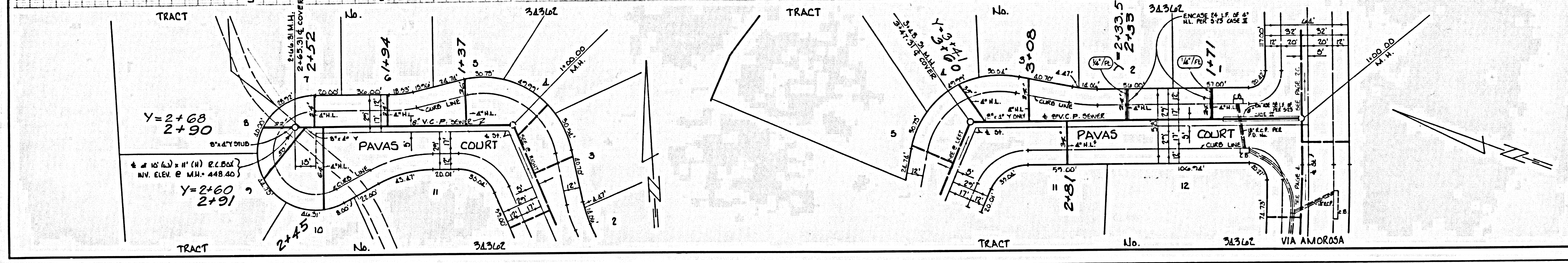
DOUBLE SCALE  
NO CHARGE FOR CONNECTIONS

47099

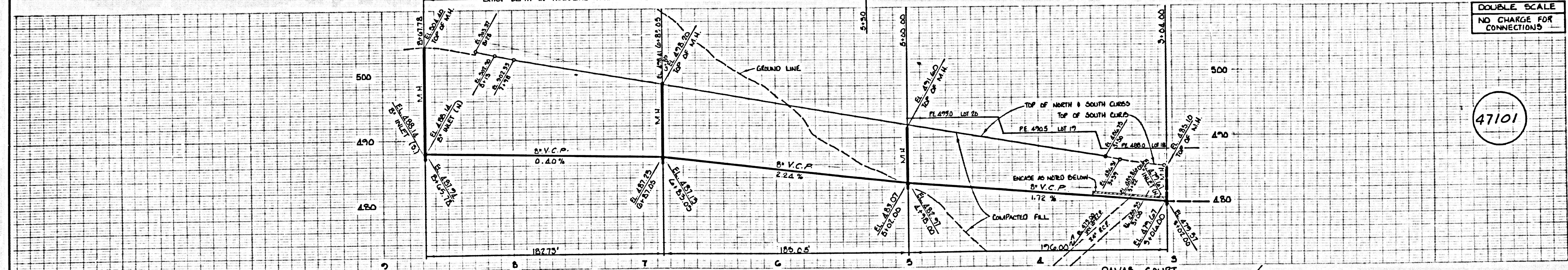
DOUBLE SCALE  
NO CHARGE FOR CONNECTIONS



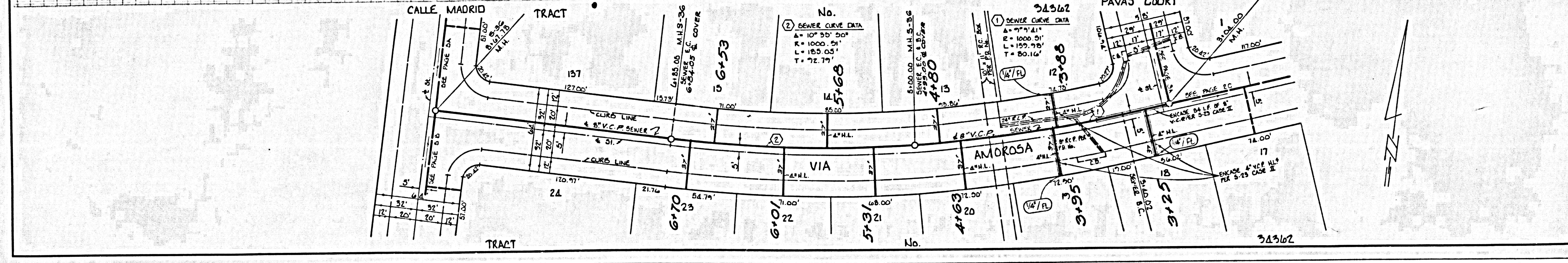
47100



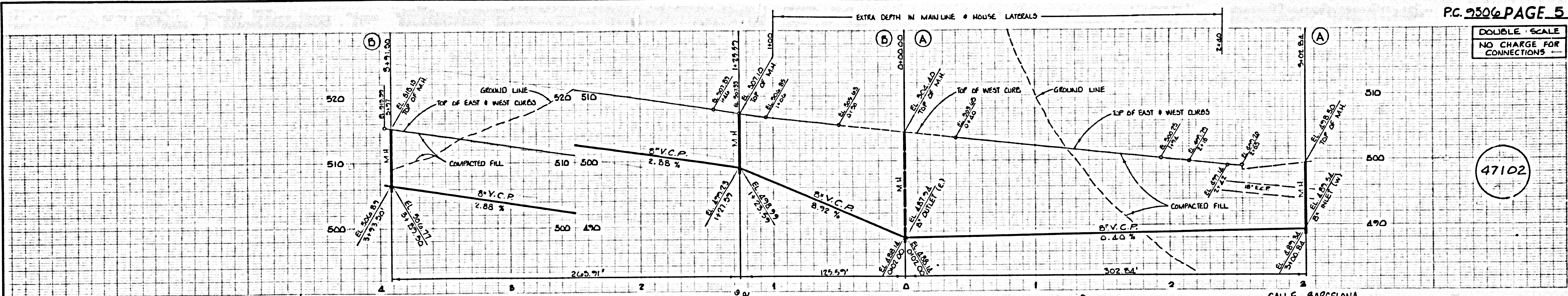
DOUBLE SCALE  
NO CHARGE FOR CONNECTIONS



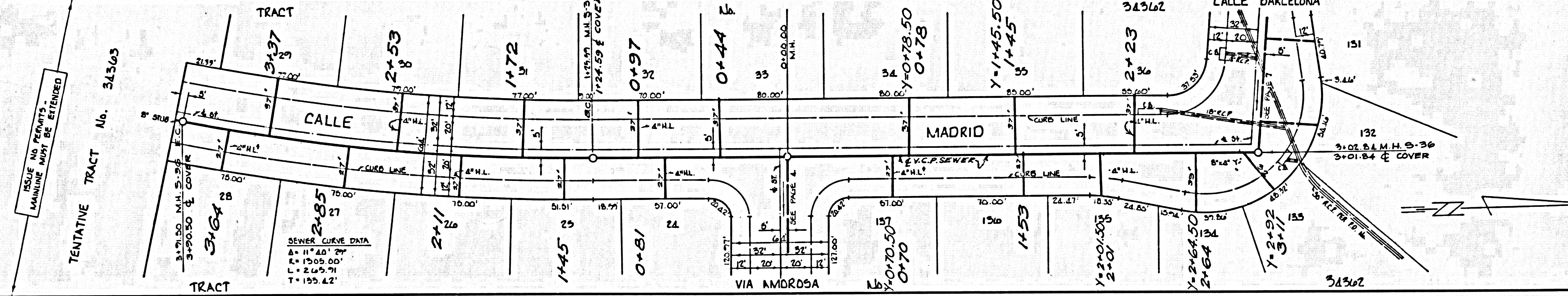
47101



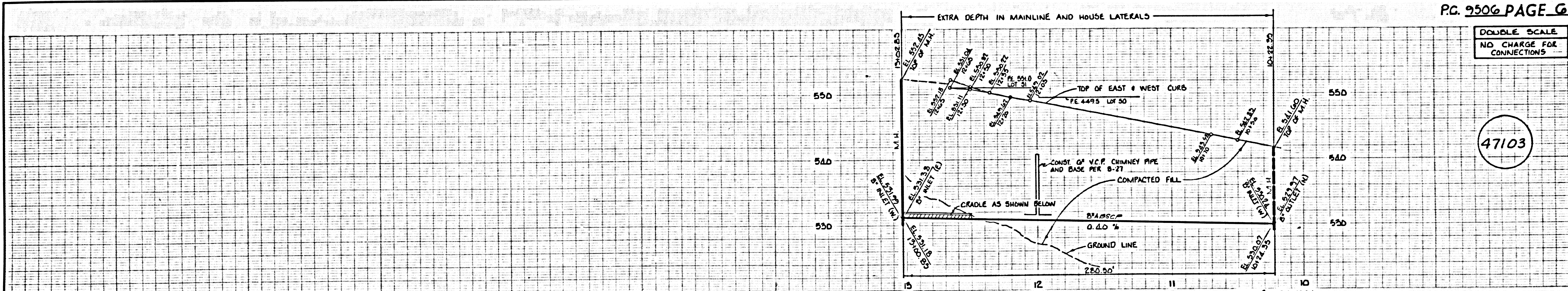
DOUBLE SCALE  
NO CHARGE FOR  
CONNECTIONS



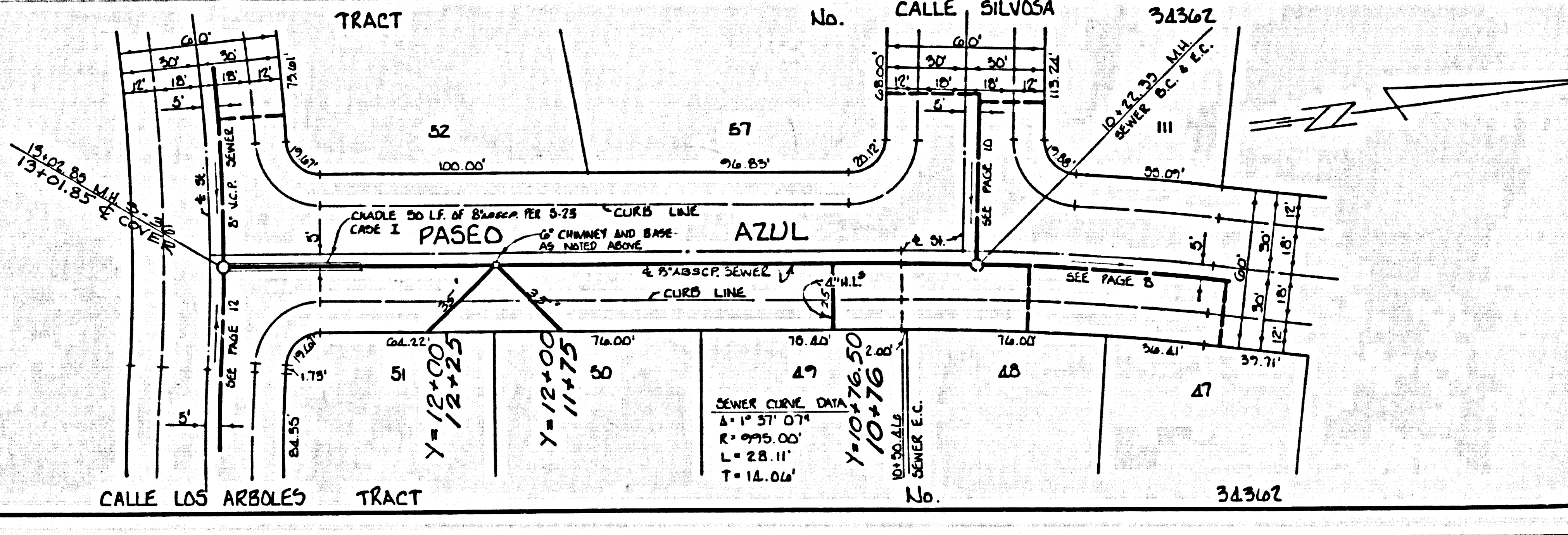
47102



DOUBLE SCALE  
NO CHARGE FOR  
CONNECTIONS

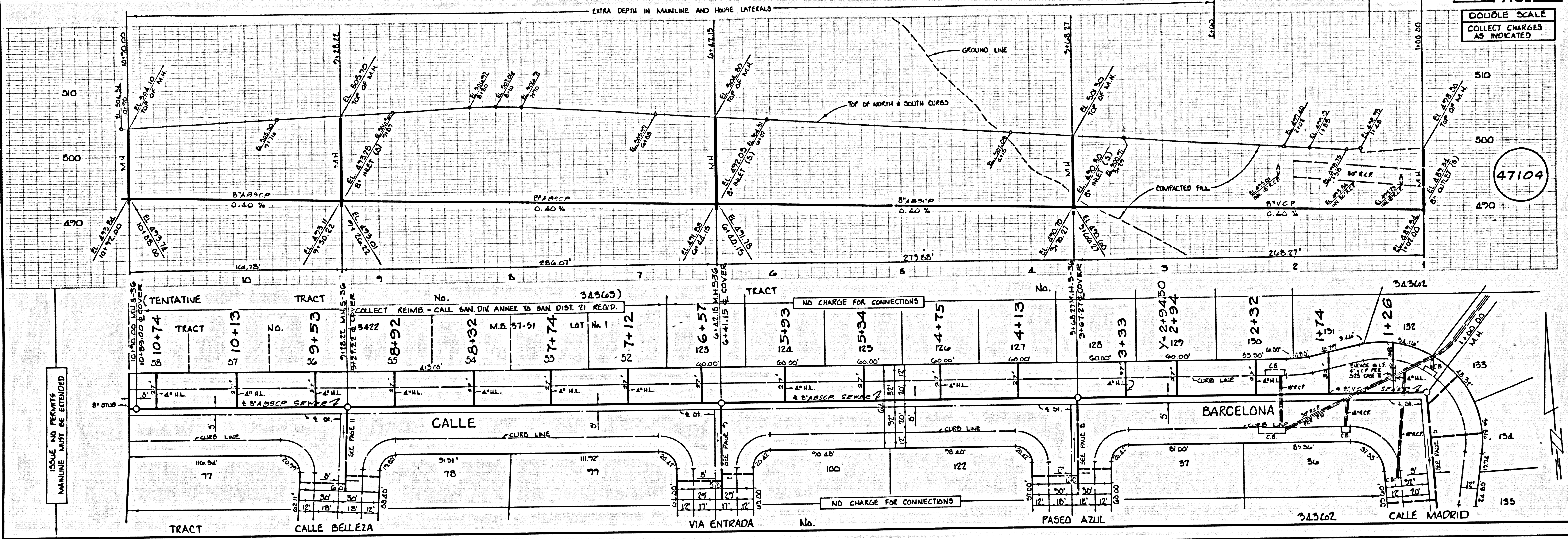


47103



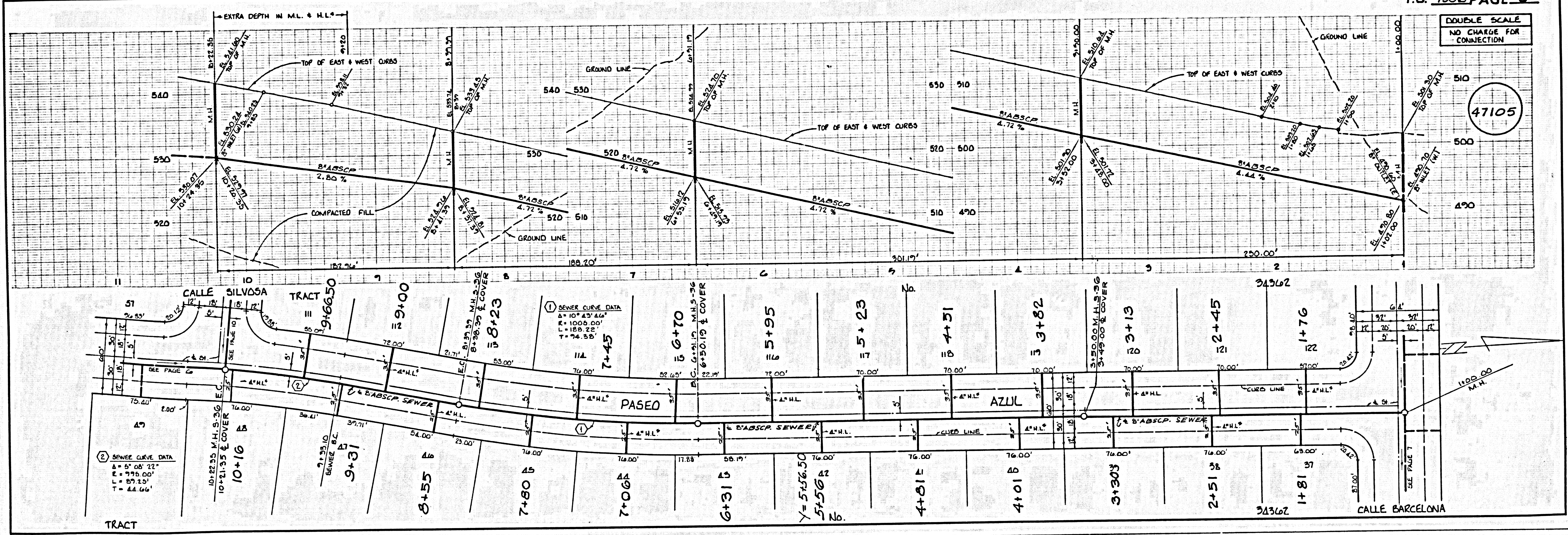
DOUBLE SCALE  
COLLECT CHARGES  
AS INDICATED

47104

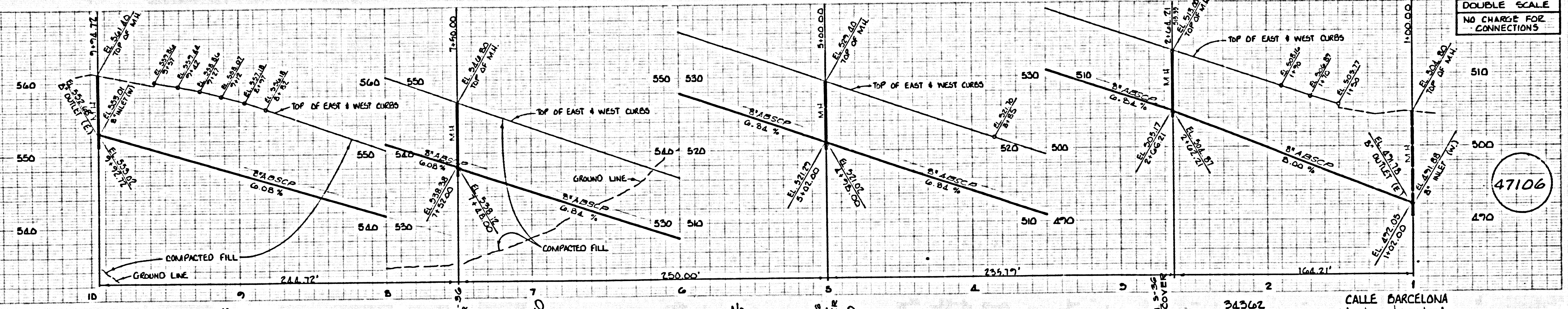


DOUBLE SCALE  
NO CHARGE FOR  
CONNECTION

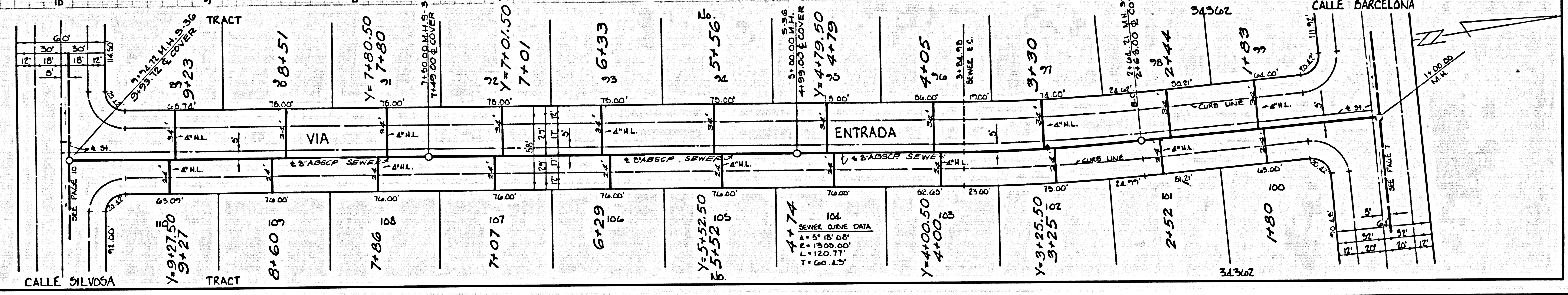
47105



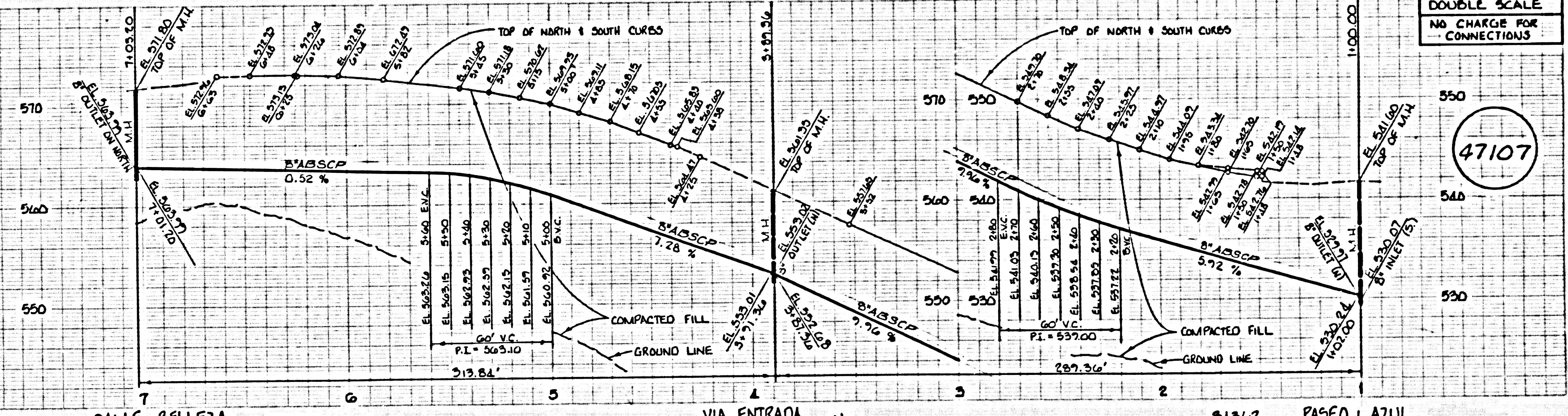
DOUBLE SCALE  
NO CHARGE FOR  
CONNECTIONS



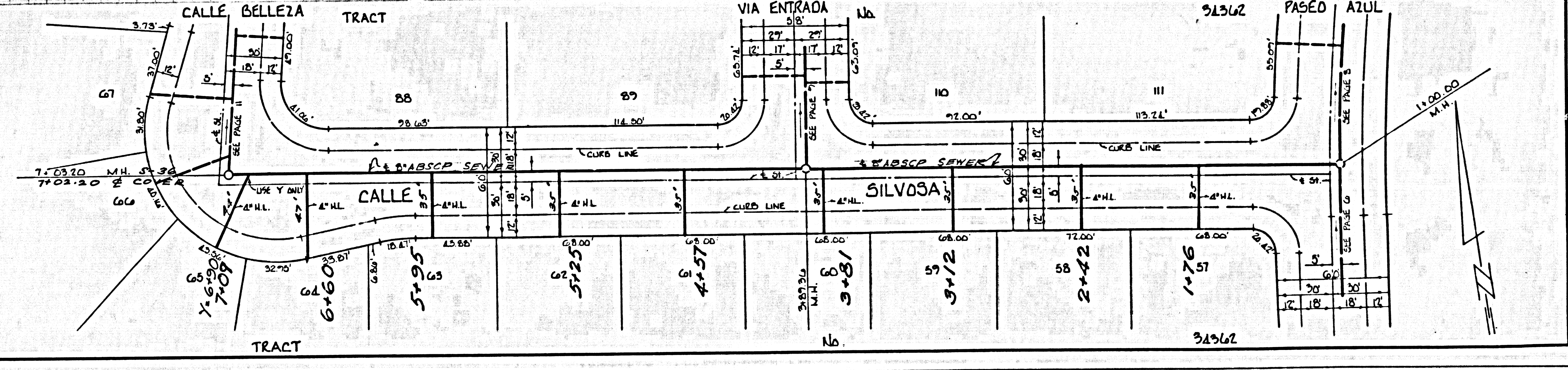
47106



DOUBLE SCALE  
NO CHARGE FOR  
CONNECTIONS

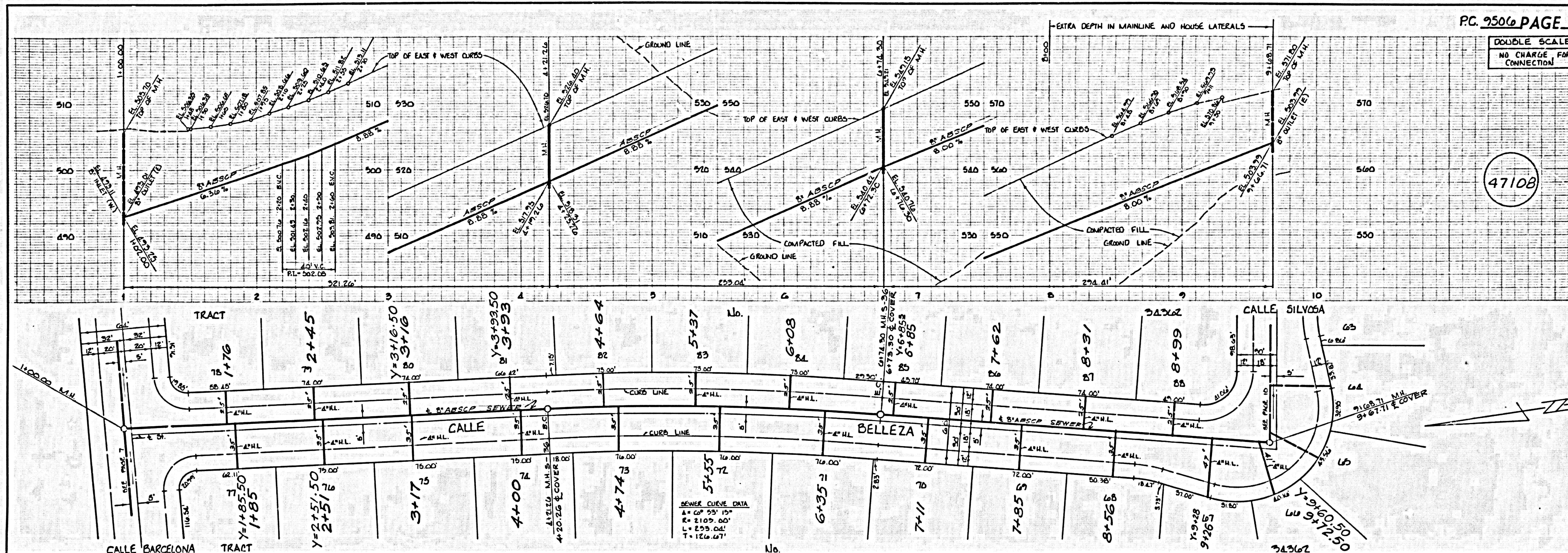


47107



DOUBLE SCALE  
NO CHARGE FOR CONNECTION

47108



DOUBLE SCALE  
COLLECT CHARGES AS INDICATED

47109

