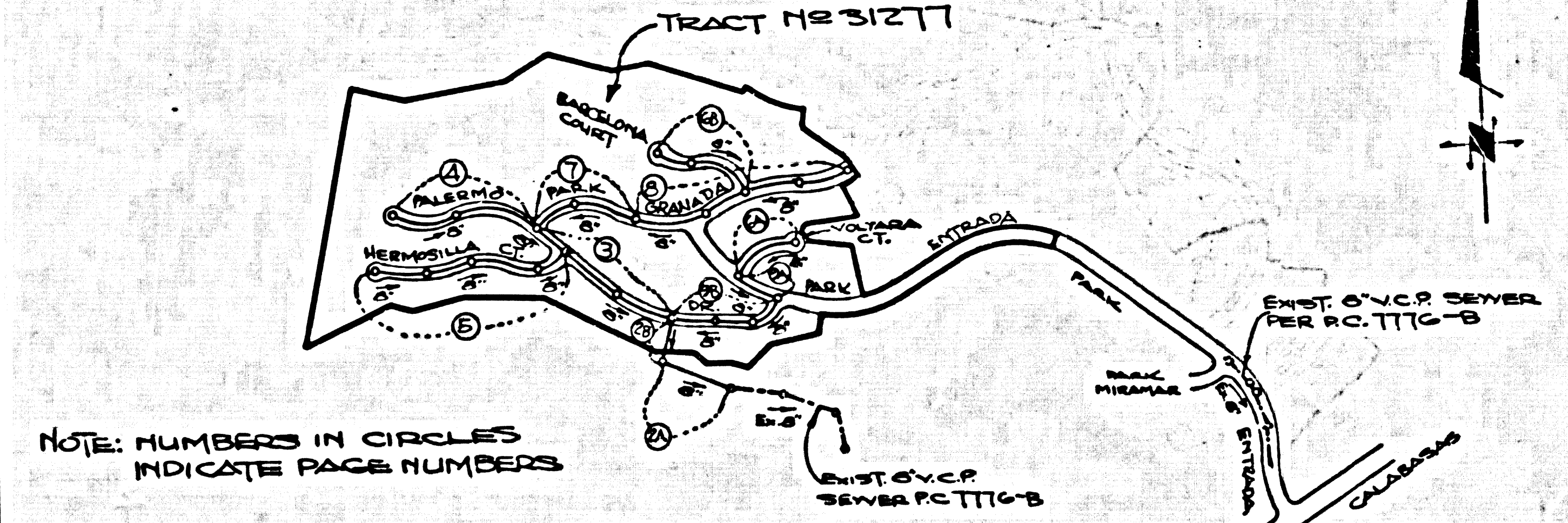


B.M. BY 7540A ELEV. 1135.511
 RD 13M TAG 3 END BRIDGE 53-1681
 OVER VENTURA FRWY @ NE COR
 CALABASAS RD + MUREAU RD 100 FT
 N + 21 FT E INT
 MALIBU QUAD. 19.12

PRIVATE ENGINEERS NOTICE TO CONTRACTORS

The existence and location of any underground utility pipes or structures shown on these plans are obtained by search of the available records. To the best of our knowledge there are no existing utilities except as shown on these plans. The contractor is required to take due precautionary measures to protect the utility lines shown and any other lines not of record or not shown on these plans.

John Lawrence
 Registered Engineer R.C.E. 19233



NOTE: NUMBERS IN CIRCLES INDICATE PAGE NUMBERS

INDEX MAP
 TRACT NO 31277
 SCALE: 1"=600'
 P.C. NO 9508

REVISION	
1	REVISE VERTICAL ALIGNMENT OF SEWER MAINLINE TO ACCOMMODATE STORM DRAIN CHANGES. LIMITS OF REVISIONS AS FOLLOWS: PAGE 2B STA. 1143.57 TO 2049.00 PAGE 3 STA. 1100 TO 2146.10; STA. 2146.10 TO 2134.10 PAGE 4 STA. 1134.10 TO 1047.00 PAGE 6A STA. 1100 TO 4110.00; PAGE 6B STA. 1100 TO 2146.10 PAGE 7 STA. 1100 TO 2100.00 PAGE 8 STA. 0150.00 TO 1247.22 PAGE 9A STA. 1100 TO 2105.25

APPROVED BY:
Walter L. Murphy
 L.A. COUNTY ENGINEER
 11-16-77
 DATE

GENERAL NOTES: DOUBLE SCALE

- ELEVATIONS ARE IN FEET ABOVE U.S.C. & G.S. SEA LEVEL DATUM OF 1929.
- NO REVISIONS SHALL BE MADE IN THESE PLANS WITHOUT THE APPROVAL OF THE COUNTY ENGINEER.
- NO REPRESENTATIVE OF THE COUNTY ENGINEER WILL SURVEY OR LAY OUT ANY PORTION OF THE WORK.
- GRADES TO WHICH THIS IMPROVEMENT IS TO BE CONSTRUCTED ARE SHOWN ON PLANS AND PROFILES. GRADE POINTS FOR TOP OF CURBS, CENTER LINE OF STREETS, OR CENTER LINE OF ALLEYS ARE SHOWN BY CIRCLES ON PROFILES. AT ALL POINTS BETWEEN DESIGNATED POINTS THE GRADE SHALL BE ESTABLISHED SO AS TO CONFORM TO A STRAIGHT LINE DRAWN BETWEEN SAID DESIGNATED POINTS.
- THE PRIVATE ENGINEER SHALL FURNISH THE COUNTY ENGINEER WITH GRADE SHEETS AND STATIONING FOR ALL 10' LATERALS AND "T" OR "Y" BRANCHES AND SHALL PROVIDE STAKES FOR THEM AT THEIR PROPER LOCATIONS WITH STATIONING PLAINLY MARKED. ALL HOUSE LATERALS SHALL BE CONSTRUCTED IN A STRAIGHT ALIGNMENT AT RIGHT ANGLES FROM THE MAIN LINE SEWER EXCEPT AS SHOWN ON THE PLANS. HOUSE LATERALS FROM CHIMNEYS SHALL NOT HAVE AN ANGLE OF LESS THAN 45° WITH THE MAIN LINE SEWER. ANY CHANGE IN ALIGNMENT SHALL BE REQUESTED IN WRITING BY THE PRIVATE ENGINEER.
- THE PRIVATE ENGINEER SHALL FURNISH THE HOUSE LATERAL DEPTH AT THE PROPERTY LINE BELOW THE TOP OF CURB ELEVATION FOR EACH HOUSE LATERAL ON THE GRADE SHEET.
- BEFORE WORK CAN BE STARTED, THE CONTRACTOR MUST OBTAIN A PERMIT TO EXCAVATE IN COUNTY STREETS FROM THE L.A. COUNTY ROAD DEPT., DISTRICT OFFICE NO. 3, AND PAY A FEE TO THE COUNTY ENGINEER, DISTRICT OFFICE NO. 3, 2005 HUNTINGTON DRIVE, SANTA MONICA, CALIF. 91060 TO COVER THE COST OF CONSTRUCTION INSPECTION AND RECORD PLANS.
- IF WORK IS TO BE DONE IN A STATE HIGHWAY, A PERMIT MUST BE OBTAINED FROM THE STATE OF CALIFORNIA, DIVISION OF HIGHWAYS, 138 SOUTH SPRING STREET, LOS ANGELES, CALIFORNIA.
- APPROVAL OF THIS PLAN BY THE COUNTY OF LOS ANGELES DOES NOT CONSTITUTE A REPRESENTATION AS TO THE ACCURACY OF THE LOCATION OF OR THE EXISTENCE OR NON-EXISTENCE OF ANY UNDERGROUND UTILITY PIPE, OR STRUCTURE WITHIN THE LIMITS OF THIS PROJECT. THIS NOTE APPLIES TO ALL PAGES.
- PREFER TO SECTION 716.6.1 OF THE STANDARD SPECIFICATIONS, REGARDING SAFETY ORDERS.
- BEFORE THE ISSUANCE OF THE REQUIRED SEWER CONSTRUCTION PERMIT BY THE COUNTY ENGINEER THE CONTRACTOR SHALL OBTAIN A PERMIT TO EXCAVATE FROM THE STATE OF CALIFORNIA DIVISION OF INDUSTRIAL SAFETY.
- THE UNDERGROUND UTILITY COMPANIES WITHIN THE LIMIT OF THIS PROJECT ARE AS FOLLOWS:
 a. SOUTHERN CALIF. GAS
 b. SOUTHERN CALIF. EDISON
 c. PACIFIC TELEPHONE
 d. L.A.S. WATERWORKS WATER DISTRICT
 e. SHELL OIL CO.

CONSTRUCTION NOTES:

- WORK SHALL BE CONSTRUCTED ACCORDING TO THE STANDARD SPECIFICATIONS FOR PUBLIC WORKS CONSTRUCTION (1976 EDITION) AND COUNTY ENGINEER SPECIAL PROVISIONS FOR THE CONSTRUCTION OF SANITARY SEWERS DATED 5-28-73, AND SHALL BE PROSECUTED ONLY IN THE PRESENCE OF THE COUNTY ENGINEER.
- THE CONTRACTOR SHALL NOTIFY THE DISTRICT ENGINEER IN TELEPHONE, (213) 514-7253, AT LEAST TWENTY-FOUR HOURS BEFORE STARTING ANY WORK UNDER THIS CONTRACT.
- HOUSE LATERALS TO BE CONSTRUCTED WITH INVERTS AT PROPERTY LINE 4 FEET BELOW CURB GRADE EXCEPT AS NOTED.
- WYS OR THE BRANCHES MAY BE USED FOR CONNECTIONS TO MAINLINE SEWERS EXCEPT AS NOTED.
- ALL STRUCTURES SHALL BE EITHER BRICK MANHOLES PER 5-3 OR PRECAST CONCRETE MANHOLES PER 5-36, EXCEPT AS NOTED.
- PROVIDE STAKES ON THE PROPERTY LINE OR PROPERTY LINE PRODUCE AT RIGHT ANGLES TO THE SEWER LINE AT THE CENTER LINE OF EACH MANHOLE.
- MANHOLE TOPS IN IMPROVED RIGHTS OF WAY TO BE LEVEL WITH FINISHED GRADE.
- VITRIFIED CLAY PIPE JOINTS SHALL BE TYPE "B", "T", OR "D" PER STANDARD SPECIFICATIONS SECTION 206-2.
- IF A POWER POLE IS WITHIN THREE FEET OF THE SEWER, THE SEWER SHALL BE ENCASED, PER 5-23, CASE 3, TWO FEET ON EACH SIDE FROM THE POWER OF INTERFERENCE.
- IF DURING THE COURSE OF CONSTRUCTION IT IS DETERMINED THAT THERE IS LESS THAN FOUR FEET OF COVER OVER THE TOP OF A MAIN LINE OR HOUSE LATERAL V.C.P. SEWER WHICH IS NOT INDICATED ON THE PLANS, THE PIPE SHALL BE ENCASED PER 5-23, CASE 3 UNLESS OTHERWISE APPROVED BY THE COUNTY ENGINEER.
- ALL JOINTS BETWEEN CAST IRON PIPE AND VITRIFIED CLAY PIPE SHALL BE MADE WITH A RUBBER SLEEVE JOINT, TYPE "C" OR "D", WITH GASKETING BY HICKEYLIP PER STANDARD SPECIFICATIONS SECTION 206-2.
- SEWERS TO BE TESTED FOR LEAKAGE PER SECTION 206-1.4 OF THE STANDARD SPECIFICATIONS AND SPECIAL PROVISIONS.
- RESURFACE ALL TRENCHES WITHIN PAVED AREAS TO MEET L.A. COUNTY ROAD DEPT. OR CALIFORNIA STATE HIGHWAY REQUIREMENTS IN ACCORDANCE WITH PERMITS.
- FULL COMPLIANCE WITH SECTION 206-1.5.5 OF THE SPECIAL PROVISIONS WILL BE REQUIRED FOR BACKFILL IN STREETS. CERTIFICATION OF BACKFILL COMPACTION AND SAND EQUIVALENT BY A QUALIFIED, REGISTERED TESTING LABORATORY SHALL BE PROVIDED BY THE PERMITTEE PRIOR TO THE ISSUANCE OF A CERTIFICATE OF PARTIAL ACCEPTANCE.

TO BE CONSTRUCTED IN
TRACT NO 31277
 PRIVATE CONTRACT NO. 9508

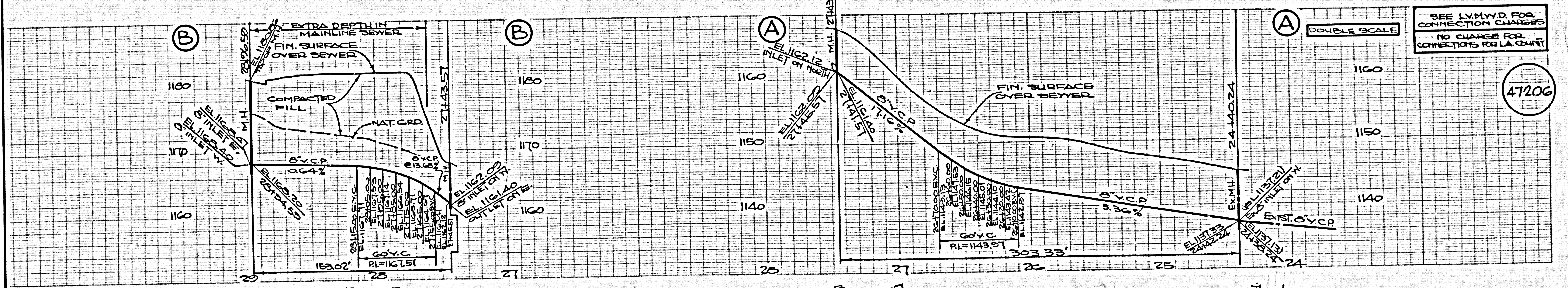
W.S. 60
 5 SHEETS, 2 PAGES
 SCALE: VERT. 1"=4' HORIZ. 1"=40'
 FEBRUARY, 1978
 PREPARED IN THE OFFICES OF
 LIND & HILLEBRUD, INC.
 2005 HUNTINGTON DRIVE
 SANTA MONICA, CALIF. 91060
 BY: *John Lawrence*
 REG. C. E. No. 19233

47205

THE FOLLOWING LATEST REVISED STANDARD PLANS ON FILE IN THE OFFICE OF THE COUNTY ENGINEER SHALL APPLY IN THE CONSTRUCTION OF THIS PROJECT:

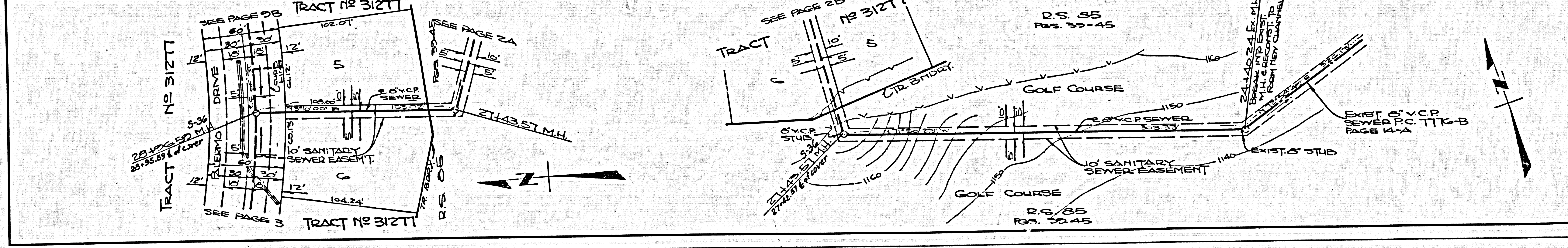
LEGEND	
MINIMUM PUBLIC SAFETY REQUIREMENTS	5-3
BRICK MANHOLE	5-3
STANDARD MANHOLE STEP	5-17
BEDDING FOR SEWER PIPE	5-31
GRADING AND ENCASUREMENT	5-28
WYS OR THE SUPPORT	5-26
ADJUSTABLE TRENCH WIDTHS	5-28
LOADING MANHOLE FRAME AND COVER	5-38
NON-REINFORCED PRECAST CONCRETE MANHOLE	5-38
SPECIAL SUPPORT & PROTECTION	5-22
SPECIAL HOUSE LATERALS	5-25

COUNTY OF LOS ANGELES, CALIFORNIA
 STEPHEN J. KOONCE COUNTY ENGINEER LAS VIRGENES MUNICIPAL WATER DISTRICT
 APPROVED *John Lawrence* 5/15/78 DATE APPROVED *W.L. Stokes* DATE 5/15/78
 GENERAL MANAGER & CHIEF ENGINEER
 CHECKED *Gene C. Thompson* 5/15/78 DATE
 R.C.E. NO. 13763
 CALABASAS BLDG. DIST. 21 I.N. 0250.02



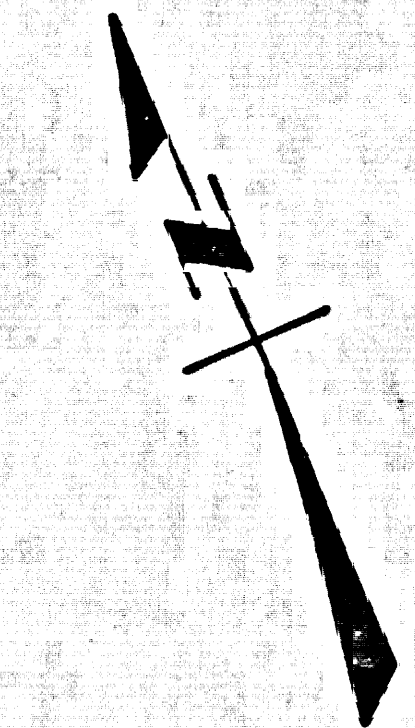
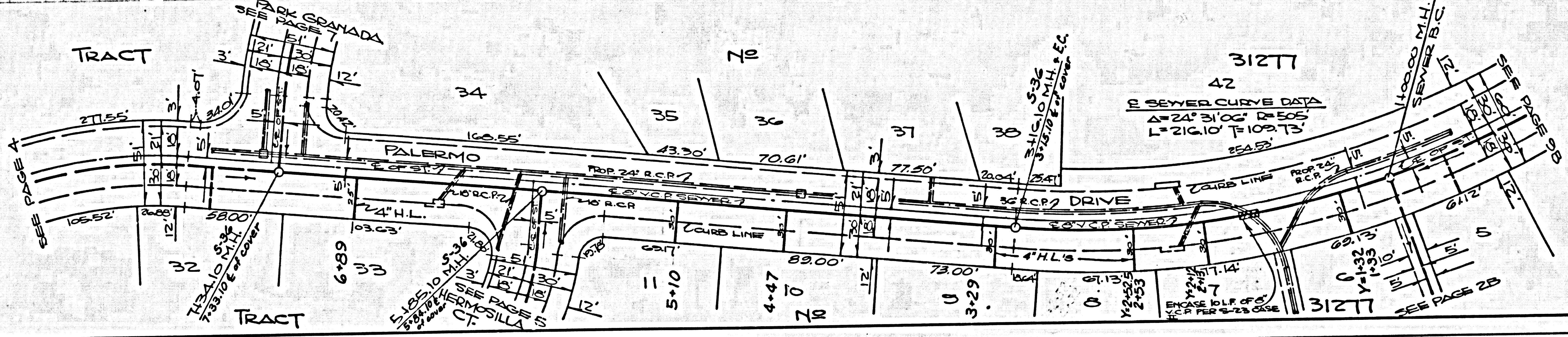
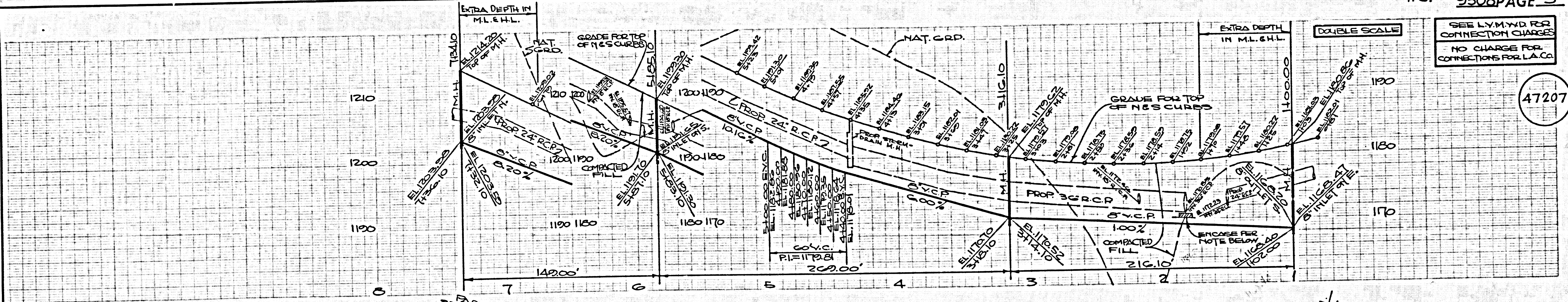
SEE L.V.M.W.D. FOR CONNECTION CHARGES
 NO CHARGE FOR CONNECTIONS FOR L.A. COUNTY

47206



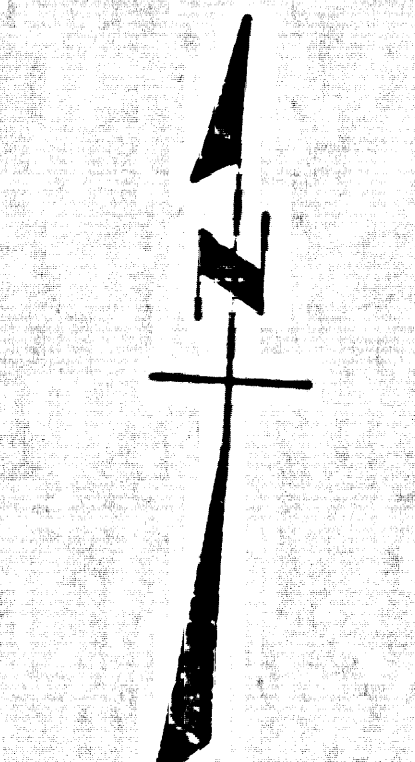
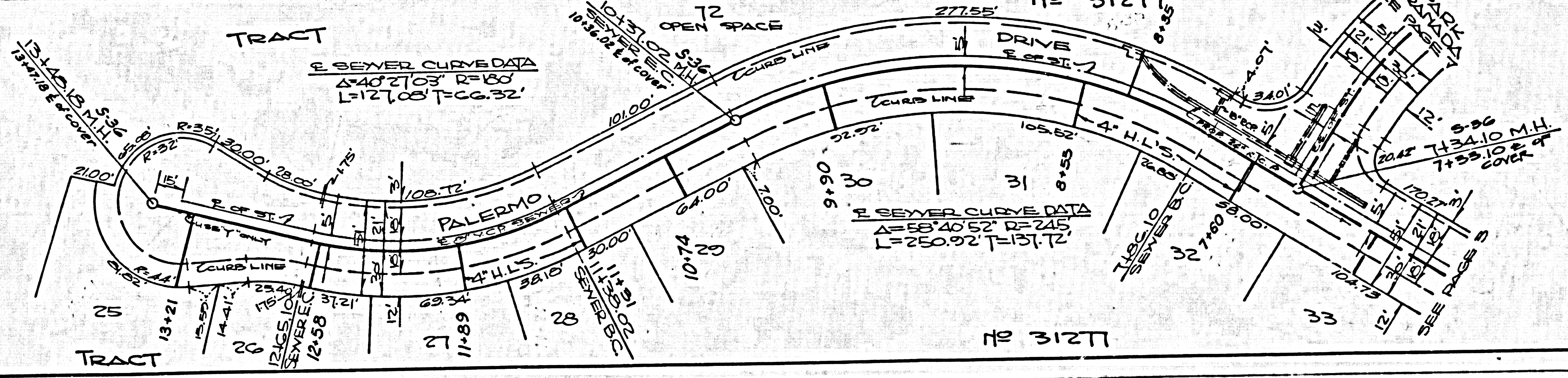
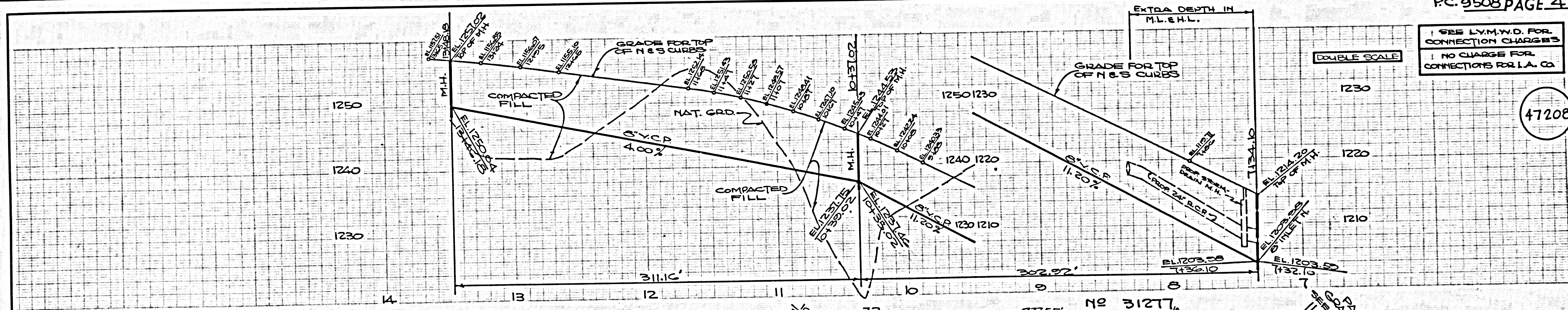
SEE L.Y.M.W.D. FOR CONNECTION CHARGES
NO CHARGE FOR CONNECTIONS FOR L.A. CO.

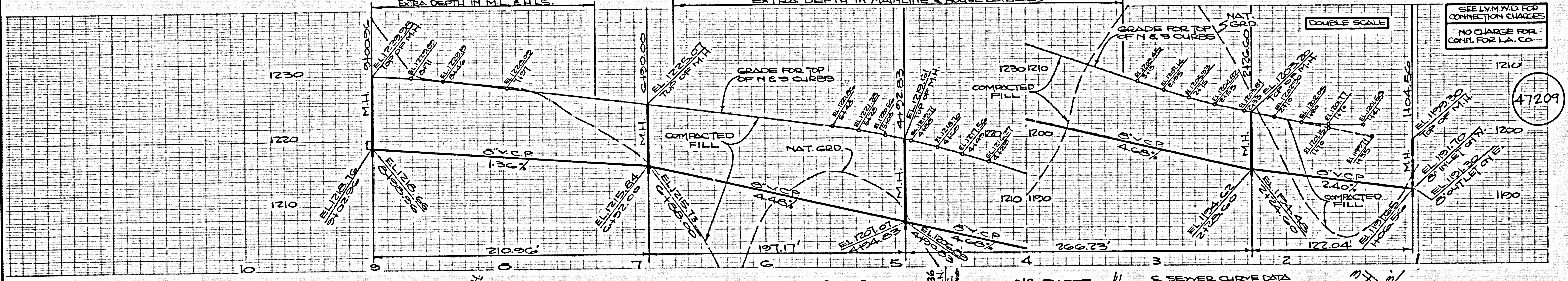
47207



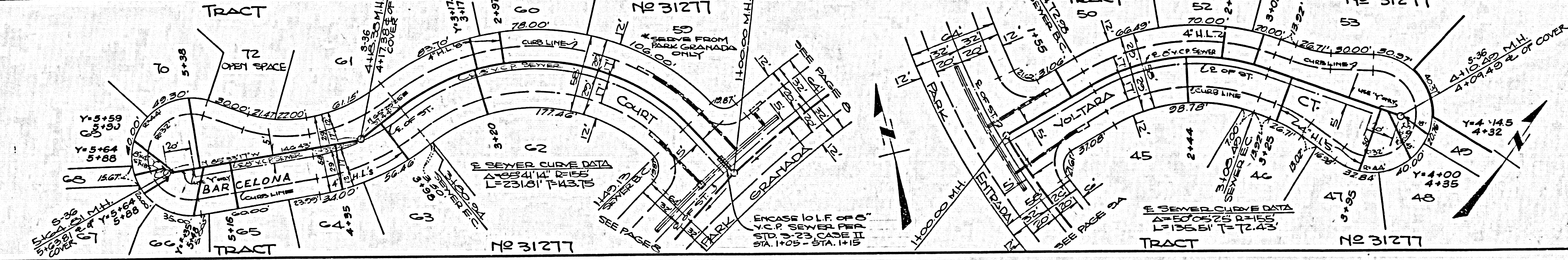
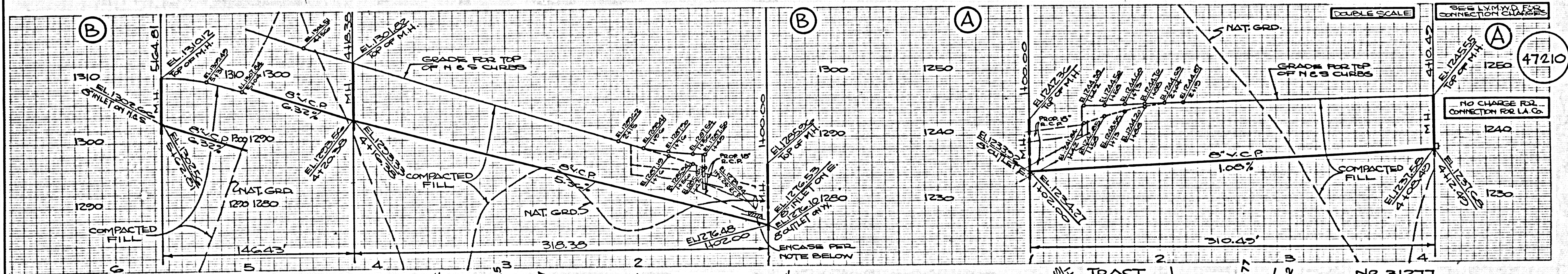
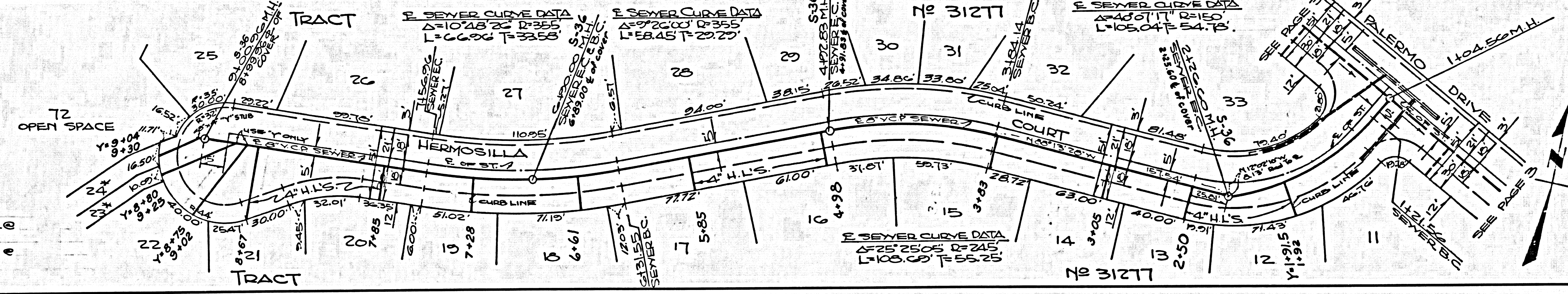
SEE L.Y.M.W.D. FOR CONNECTION CHARGES
NO CHARGE FOR CONNECTIONS FOR L.A. CO.

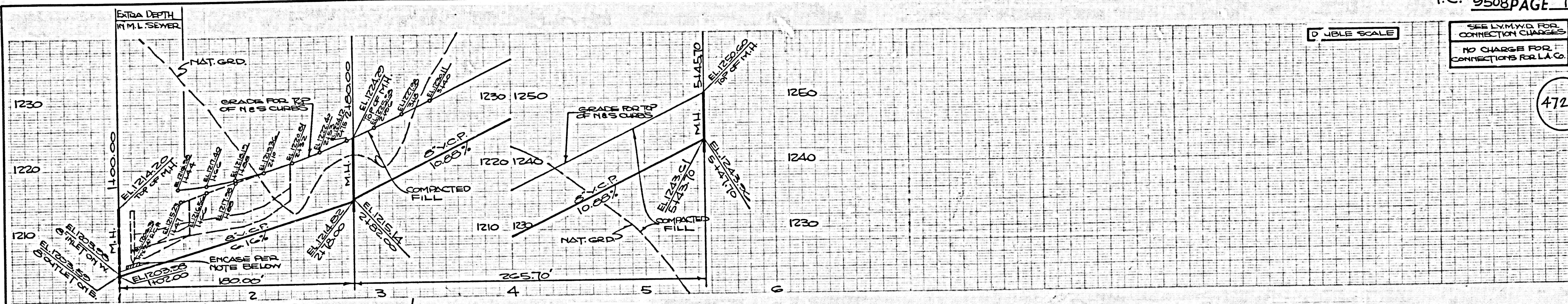
47208





*SURVEYOR'S NOTE:
 INVERT ELEV. OF H.L.F. LOT 24 @
 T.C. TO BE SET @ 1220.20
 INVERT ELEV. OF H.L.F. LOT 23 @
 T.C. TO BE SET @ 1220.35

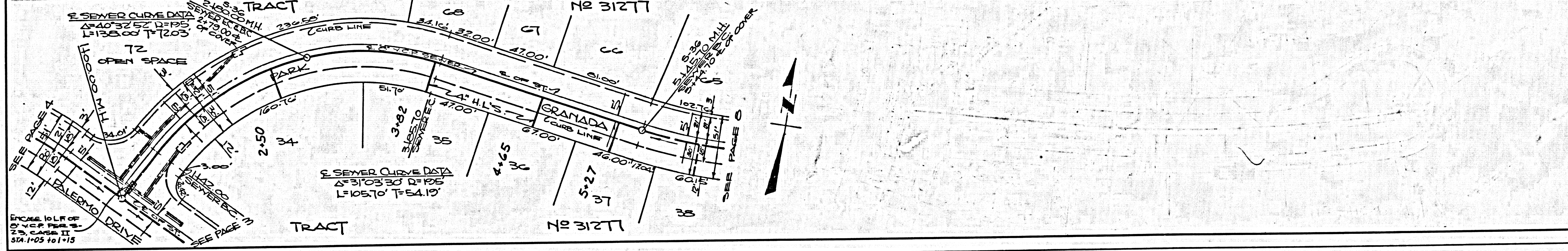




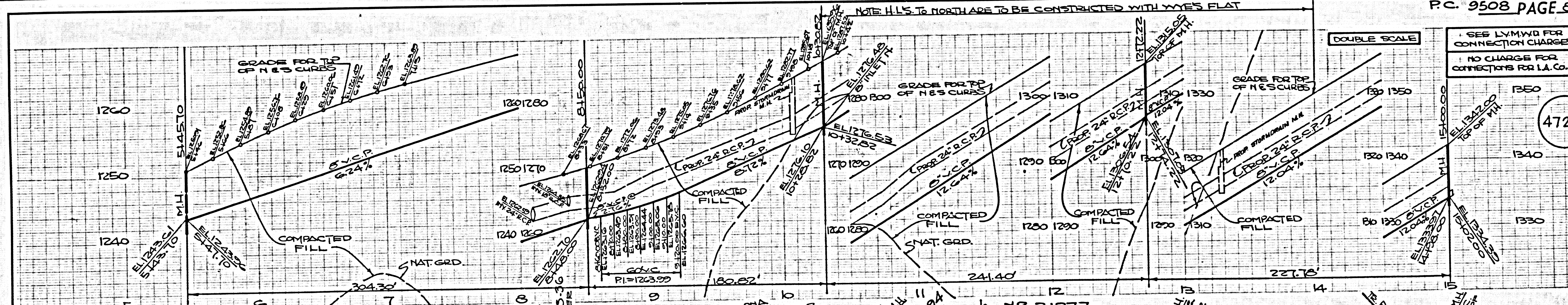
DOUBLE SCALE

SEE LVMWD FOR CONNECTION CHARGES
NO CHARGE FOR CONNECTIONS FOR L.A. CO.

47211



ENCASE 10 LF OF 6" VCP PER 12" CASE II SM. NOS 101-115



DOUBLE SCALE

SEE LVMWD FOR CONNECTION CHARGES
NO CHARGE FOR CONNECTIONS FOR L.A. CO.

47212

