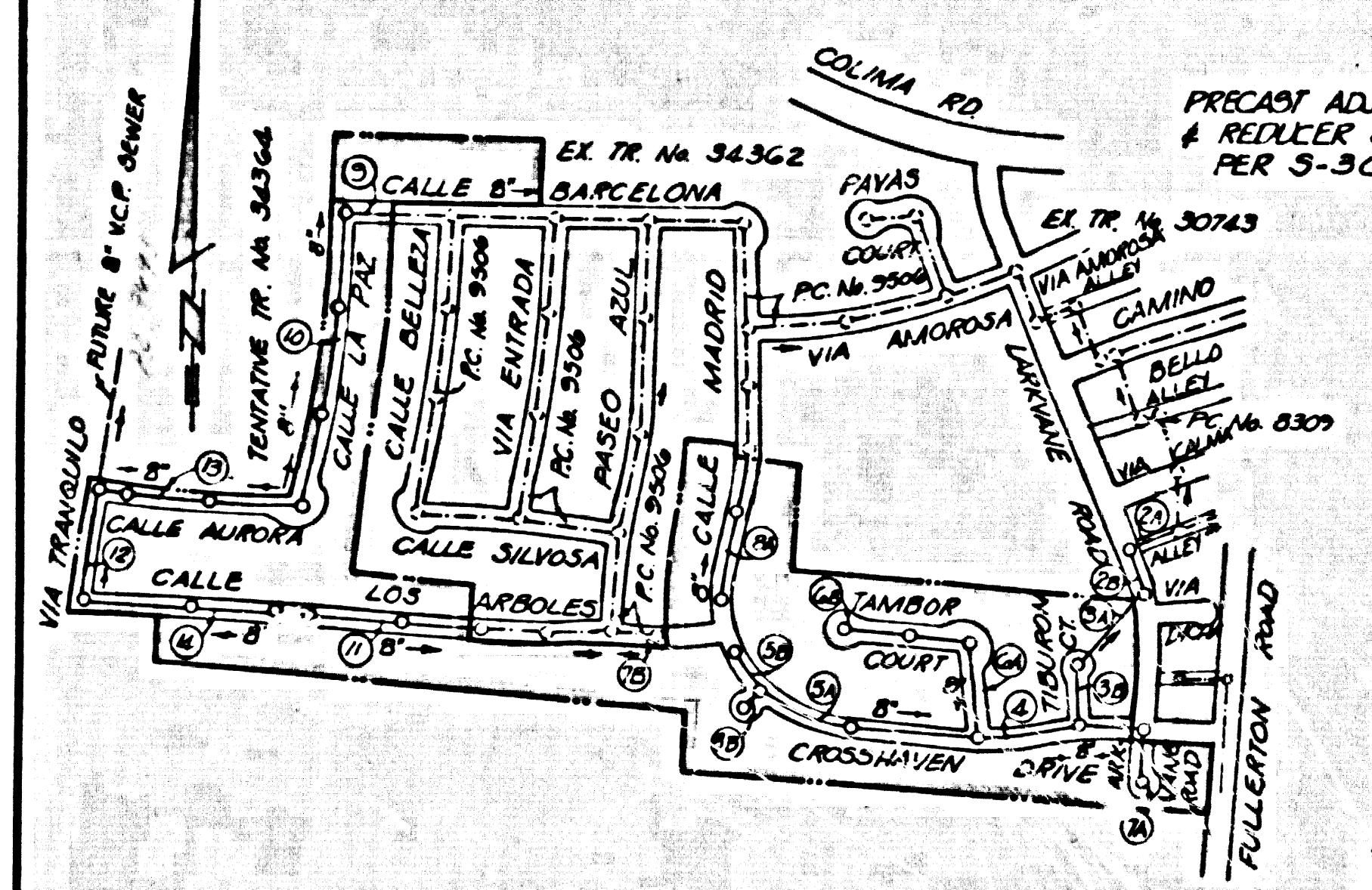


B.M. C.G. 4046 ELEV. 487.016
R.D. B.M. TAG 2' E6 B.C.R. @ S.E.
COR. COLUMA ROAD & LARKVANE RD.
46' E & 45' S & INT.
OTTERBEIN QUAD. 1975

PRIVATE ENGINEERS NOTICE TO CONTRACTORS:
THE EXISTENCE AND APPROXIMATE LOCATIONS OF UNDERGROUND UTILITIES OR STRUCTURES EXCEPT AS SHOWN ON THESE PLANS WERE DETERMINED BY A SEARCH OF AVAILABLE PUBLIC RECORDS TO THE BEST OF OUR KNOWLEDGE. THERE ARE NO EXISTING UNDERGROUND UTILITIES OR STRUCTURES EXCEPT AS SHOWN ON THESE PLANS.
THE CONTRACTOR IS REQUIRED TO TAKE DUE PRECAUTIONARY MEASURES TO PROTECT THE UTILITIES OR STRUCTURES SHOWN AND ANY OTHER UTILITIES OR STRUCTURES NOT OF RECORD OR NOT SHOWN ON THESE PLANS.

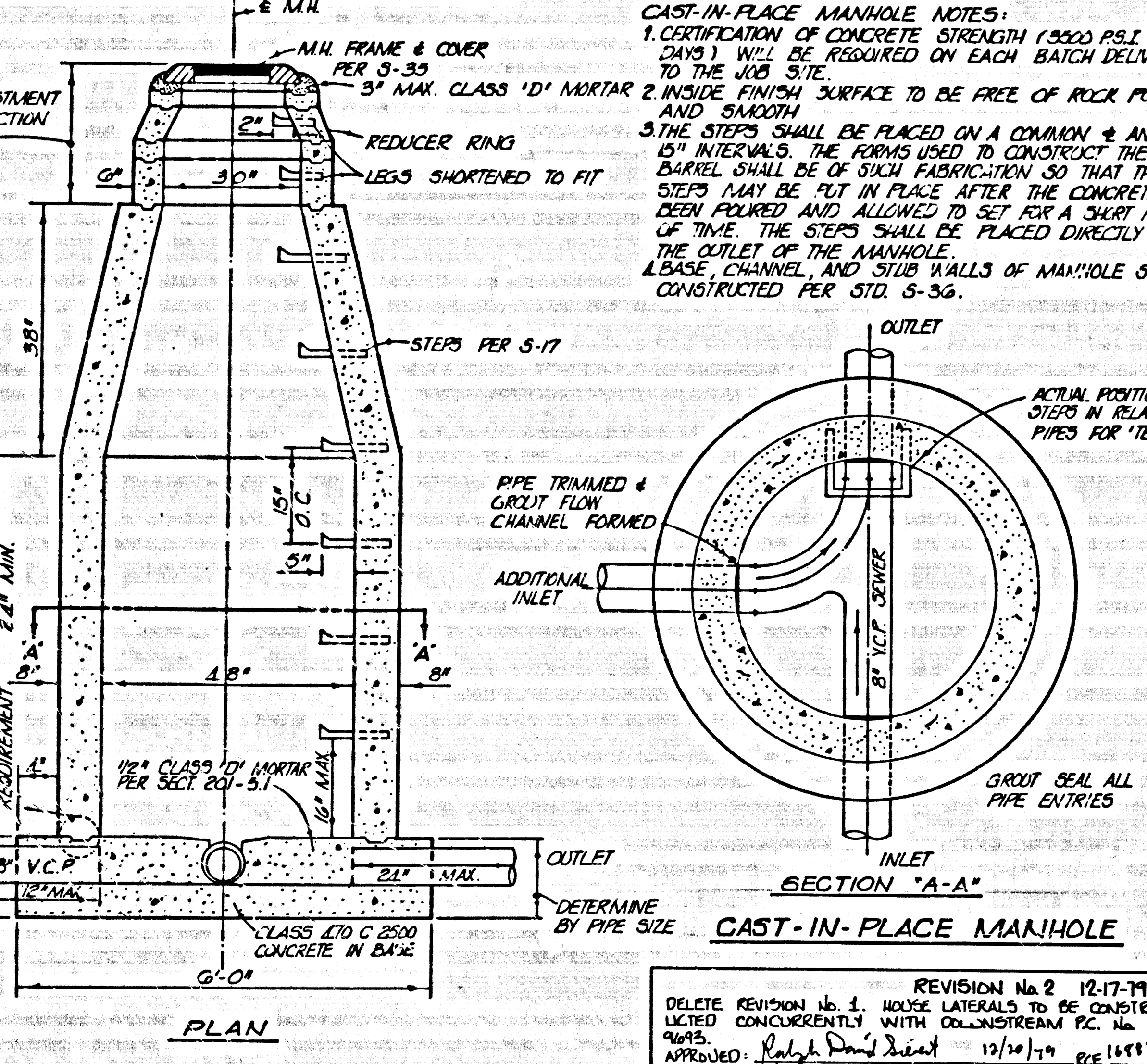
REVISION No. 1 12-24-79
DELETED HOUSE LATERALS FROM NORTH SIDE OF
CALLE ARORA, PAGE 19. 4" UNITS WERE CONSTRUCTED
APPROVED [Signature] 12/24/79 R.C.E. No. 11829

Robert R. Flores 11829
ROBERT R. FLORES R.C.E. No. DATE



NOTE:
NO PERMITS ARE TO BE ISSUED ON LOT NUMBERS 73-87 INCLUSIVE AND 97-101 INCLUSIVE UNTIL FUTURE DOWNSTREAM PC, FROM TENTATIVE TRACT NO. 34364, IS ACCEPTED.

NOTE:
NO PERMITS ARE TO BE ISSUED ON LOT NUMBERS 37-72 INCLUSIVE, 70-76 INCLUSIVE, AND 107-117 INCLUSIVE UNTIL PC No. 9500, FROM TRACT No. 34362, IS ACCEPTED.



GENERAL NOTES: **DOUBLE SCALE**
1. ELEVATIONS ARE IN FEET ABOVE U.S.C. & G.S. MEAN LEVEL DATUM OF 1929.
2. NO REVISIONS SHALL BE MADE IN THESE PLANS WITHOUT THE APPROVAL OF THE COUNTY ENGINEER.
3. NO REPRESENTATIVE OF THE COUNTY ENGINEER WILL SURVEY OR LAY OUT ANY PORTION OF THE WORK.
4. GRADES TO WHICH THIS IMPROVEMENT IS TO BE CONSTRUCTED ARE SHOWN ON PLANS AND PROFILES. GRADE POINTS FOR TOP OF CURBS, CENTER LINE OF STREETS, OR CENTER LINE OF ALLEYS ARE SHOWN BY CIRCLES ON PROFILES. AT ALL POINTS BETWEEN DESIGNATED POINTS THE GRADE SHALL BE ESTABLISHED SO AS TO CONFORM TO A STRAIGHT LINE DRAWN BETWEEN SAID DESIGNATED POINTS.
5. THE PRIVATE ENGINEER SHALL FURNISH THE COUNTY ENGINEER WITH GRADE SHEETS AND STATIONING FOR ALL HOUSE LATERALS AND "T" OR "Y" BRANCHES AND SHALL PROVIDE STAKES FOR THEM AT THEIR PROPER LOCATIONS WITH STATIONING PLAINLY MARKED. ALL HOUSE LATERALS SHALL BE CONSTRUCTED IN A STRAIGHT ALIGNMENT AT RIGHT ANGLES FROM THE MAIN LINE SEWER EXCEPT AS SHOWN ON THE PLANS. HOUSE LATERALS FROM CHIMNEYS SHALL HAVE AN ANGLE OF LESS THAN 45° WITH THE MAIN LINE SEWER. ANY CHANGE IN ALIGNMENT SHALL BE REQUESTED IN WRITING BY THE PRIVATE ENGINEER.
6. THE PRIVATE ENGINEER SHALL FURNISH THE HOUSE LATERAL DEPTH AT THE PROPERTY LINE BELOW THE TOP OF CURB ELEVATION FOR EACH HOUSE LATERAL ON THE GRADE SHEET.
7. BEFORE WORK CAN BE STARTED, THE CONTRACTOR MUST OBTAIN A PERMIT TO EXCAVATE IN COUNTY STREETS FROM THE L.A. COUNTY ROAD DEPT., DISTRICT OFFICE NO. 7, AND PAY A FEE TO THE COUNTY ENGINEER, 201 E. BONITA AVE., SAN DIMAS REGIONAL OFFICE TO COVER THE COST OF CONSTRUCTION INSPECTION AND RECORD PLANS.
8. IF WORK IS TO BE DONE IN A STATE HIGHWAY, A PERMIT MUST BE OBTAINED FROM THE STATE OF CALIFORNIA, DIVISION OF HIGHWAYS, 128 SOUTH SPRING STREET, LOS ANGELES, CALIFORNIA.
9. APPROVAL OF THIS PLAN BY THE COUNTY OF LOS ANGELES DOES NOT CONSTITUTE A REPRESENTATION AS TO THE ACCURACY OF THE LOCATION OF OR THE EXISTENCE OR NON-EXISTENCE OF ANY UNDERGROUND UTILITY PIPE, OR STRUCTURE WITHIN THE LIMITS OF THIS PROJECT. THIS NOTE APPLIES TO ALL PAGES.
10. REFER TO SECTION 7-16.11 OF THE STANDARD SPECIFICATIONS, REGARDING SAFETY OBSTRUCTIONS.
11. PRIOR TO THE ISSUANCE OF THE REQUIRED SEWER CONSTRUCTION PERMIT BY THE COUNTY ENGINEER THE CONTRACTOR SHALL OBTAIN A PERMIT TO EXCAVATE FROM THE STATE OF CALIFORNIA, DIVISION OF INDUSTRIAL SAFETY, AND SHALL FILE A CERTIFICATE OF WORKERS COMPENSATION INSURANCE AND LIABILITY INSURANCE WITH THE CO. ENGR.

CONSTRUCTION NOTES:
1. WORK SHALL BE CONSTRUCTED ACCORDING TO THE STANDARD SPECIFICATIONS FOR PUBLIC WORKS CONSTRUCTION (1978 EDITION) AND COUNTY ENGINEER SPECIAL PROVISIONS FOR THE CONSTRUCTION OF SANITARY SEWERS DATED **SEPT. 26, 1976** AND SHALL BE PROSECUTED ONLY IN THE PRESENCE OF THE COUNTY ENGINEER.
2. THE CONTRACTOR SHALL NOTIFY THE ENVIRONMENTAL DEVELOPMENT DIVISION, PHONE 213-974-7223, AT LEAST TWENTY-FOUR HOURS BEFORE STARTING ANY WORK UNDER THIS CONTRACT.
3. HOUSE LATERALS TO BE CONSTRUCTED WITH INVERTS AT PROPERTY LINE 6 FEET BELOW CURB GRADE EXCEPT AS NOTED.
4. "T" OR "Y" BRANCHES MAY BE USED FOR CONNECTIONS TO MAINTAIN SEWERS EXCEPT AS NOTED.
5. ALL STRUCTURES SHALL BE EITHER BRICK MANHOLES PER S-33 OR PRECAST CONCRETE MANHOLES PER S-36, EXCEPT AS NOTED.
6. PROVIDE STAKES ON THE PROPERTY LINE OR PROPERTY LINES PRODUCED AT RIGHT ANGLES TO THE SEWER LINE AT THE CENTER LINE OF EACH MANHOLE.
7. MANHOLE TOPS IN UNIMPROVED RIGHTS OF WAY TO BE SIX INCHES ABOVE FINISHED GRADE.
8. VITRIFIED CLAY PIPE JOINTS SHALL BE TYPE "D", "F", OR "G" PER STANDARD SPECIFICATIONS SECTION 308-2.
9. IF A POWER POLE IS WITHIN THREE FEET OF THE SEWER, THE SEWER SHALL BE ENCASED, PER S-23, CASE II, TWO FEET ON EACH SIDE FROM THE POINT OF INTERFERENCE.
10. IF DURING THE COURSE OF CONSTRUCTION IT IS DETERMINED THAT THERE IS LESS THAN FOUR FEET OF COVER OVER THE TOP OF A MAIN LINE OR HOUSE LATERAL V.C.P. SEWER WHICH IS NOT INDICATED ON THE PLANS, THE PIPE SHALL BE ENCASED PER S-23, CASE II UNLESS OTHERWISE APPROVED BY THE COUNTY ENGINEER.
11. ALL JOINTS BETWEEN CAST IRON PIPE AND VITRIFIED CLAY PIPE SHALL BE MADE WITH A RUBBER SLEEVE JOINT, TYPE "C" OR "D", WITH BUSHING IF NECESSARY PER STANDARD SPECIFICATIONS, SECTION 308-2.
12. SEWERS TO BE TESTED FOR LEAKAGE PER SECTION 306-1.4 OF THE STANDARD SPECIFICATIONS AND SPECIAL PROVISIONS.
13. RESURFACE ALL TRENCHES WITHIN PAVED AREAS TO MEET L.A. COUNTY ROAD DEPT. OR CALIFORNIA STATE HIGHWAY REQUIREMENTS IN ACCORDANCE WITH PERMITS.
14. FULL COMPLIANCE WITH SECTION 306-1.5 OF THE SPECIAL PROVISIONS WILL BE REQUIRED FOR BACKFILL IN STREETS. CERTIFICATION OF BACKFILL COMPACTION AND SAND EQUIVALENTS BY A QUALIFIED, REGISTERED TESTING LABORATORY SHALL BE PROVIDED BY THE PERMITTEE PRIOR TO THE ISSUANCE OF A CERTIFICATE OF PARTIAL ACCEPTANCE.
15. SPECIAL BACKFILL IN DESIGNATED AREAS:
A. BACKFILL TRENCH AND REPLACE OTHER EXISTING REMOVED SO AS TO ACHIEVE THE MATERIAL OF FINISHED GRADES AND SLOPES SHOWN ON GRADING PLAN APPROVED FOR THIS TRACT BY BUILDING AND SAFETY DIVISION.
B. ALL BACKFILL AND SOILS REPLACED SHALL BE COMPACTED TO A MINIMUM OF 90% MAXIMUM DENSITY PER A.S.T.M. STANDARD METHOD OF TESTING D-1557-57T AS INDICATED. ACCEPTABLE CERTIFICATION OF SUCH COMPACTION SHALL BE SUBMITTED TO THE ENVIRONMENTAL DEVELOPMENT DIVISION.

PROFILE, ALIGNMENT AND GRADE OF
SANITARY SEWERS PAGE 1
TO BE CONSTRUCTED IN

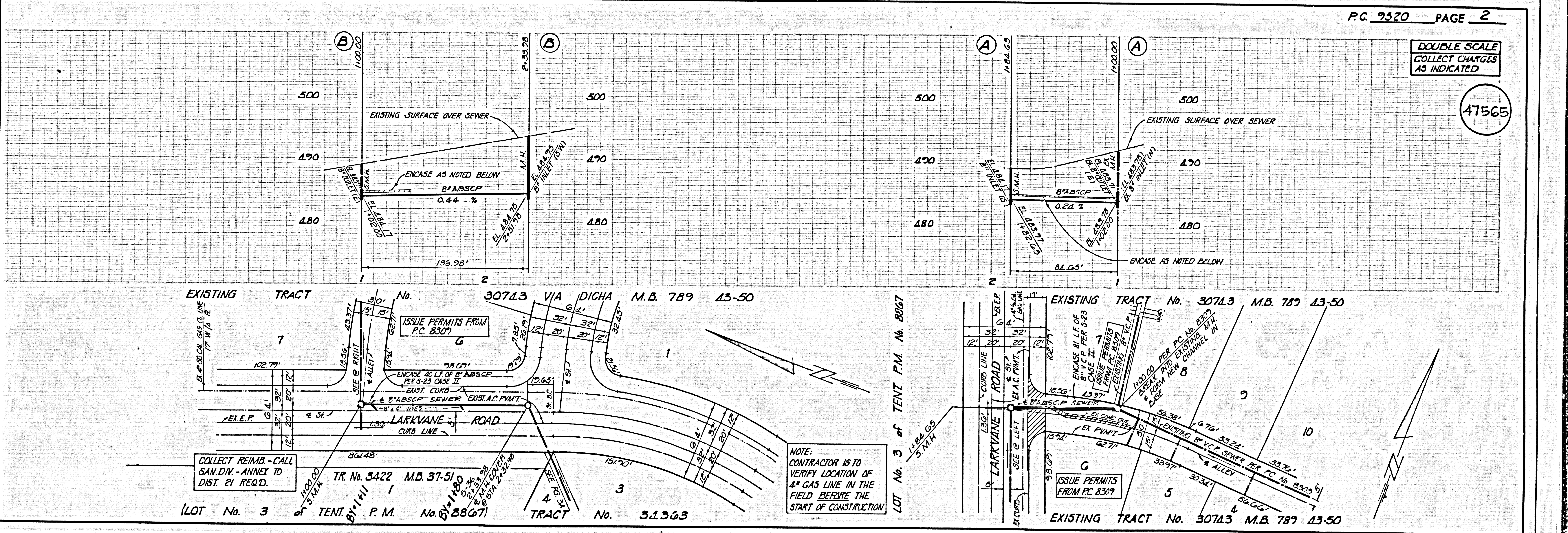
TRACT No. 34363
PRIVATE CONTRACT NO. 9520

W.S. 35-C4
1 SHEETS, 14 PAGES (47564)
SCALE: VERT. 1"=4'
HORIZ. 1"=40'
MARCH 3, 1978
PREPARED IN THE OFFICES OF
KEMMERER ENGINEERING Co. Inc.
6705 So. PANITER AVE. WHITTIER, CA. 90608
By: Robert R. Flores (213) 678-0771
REG. C.E. No. 11829

THE FOLLOWING LATEST REVISED STANDARD PLANS ON FILE IN THE OFFICE OF THE COUNTY ENGINEER SHALL APPLY IN THE CONSTRUCTION OF THIS PROJECT.

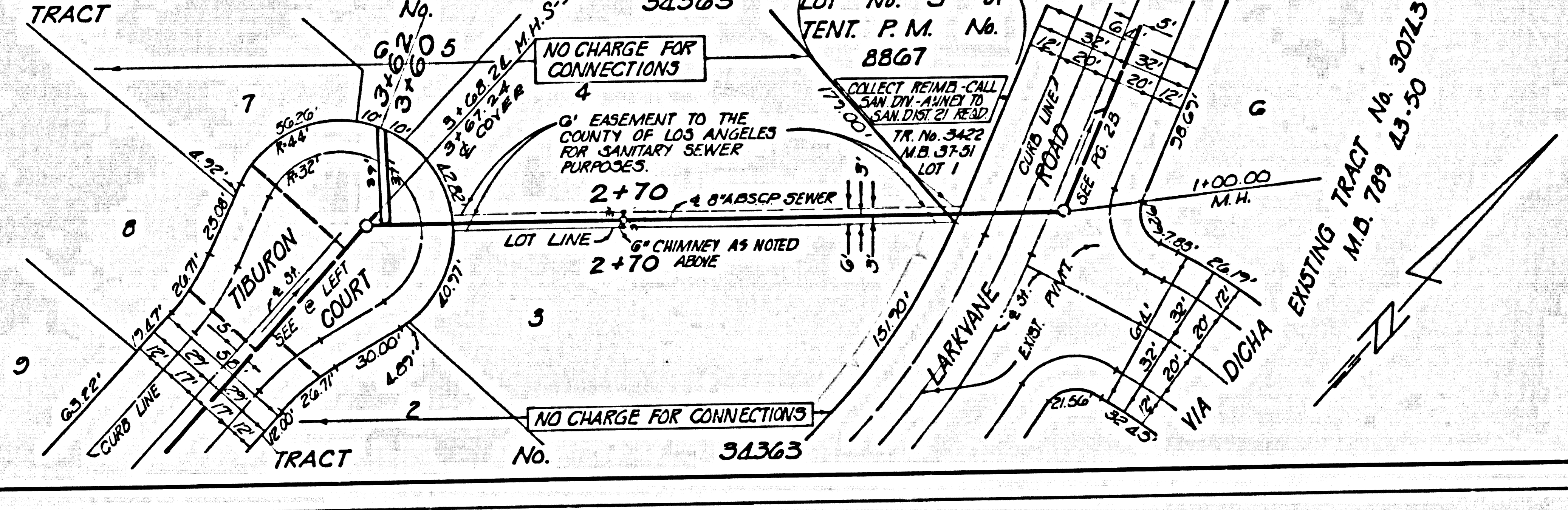
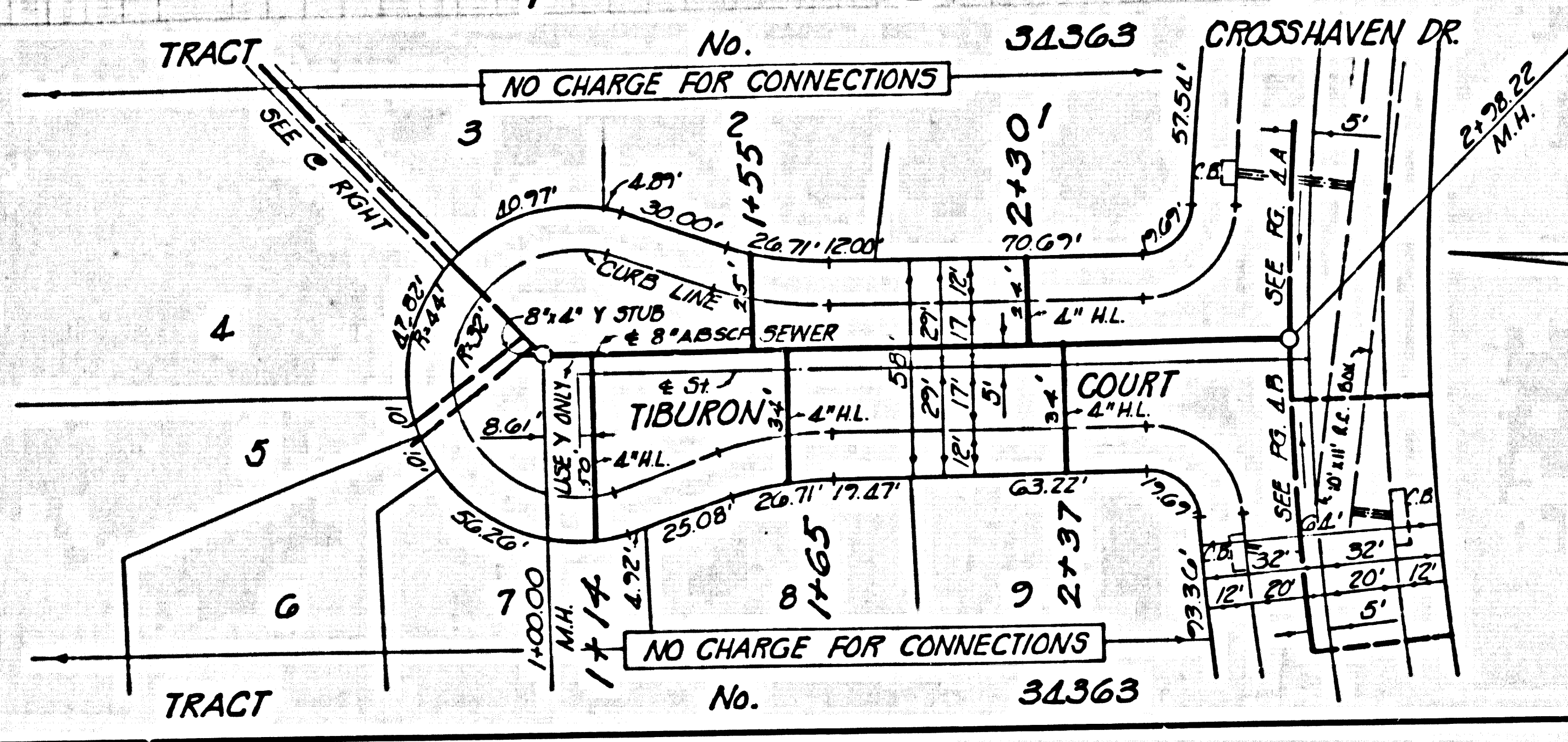
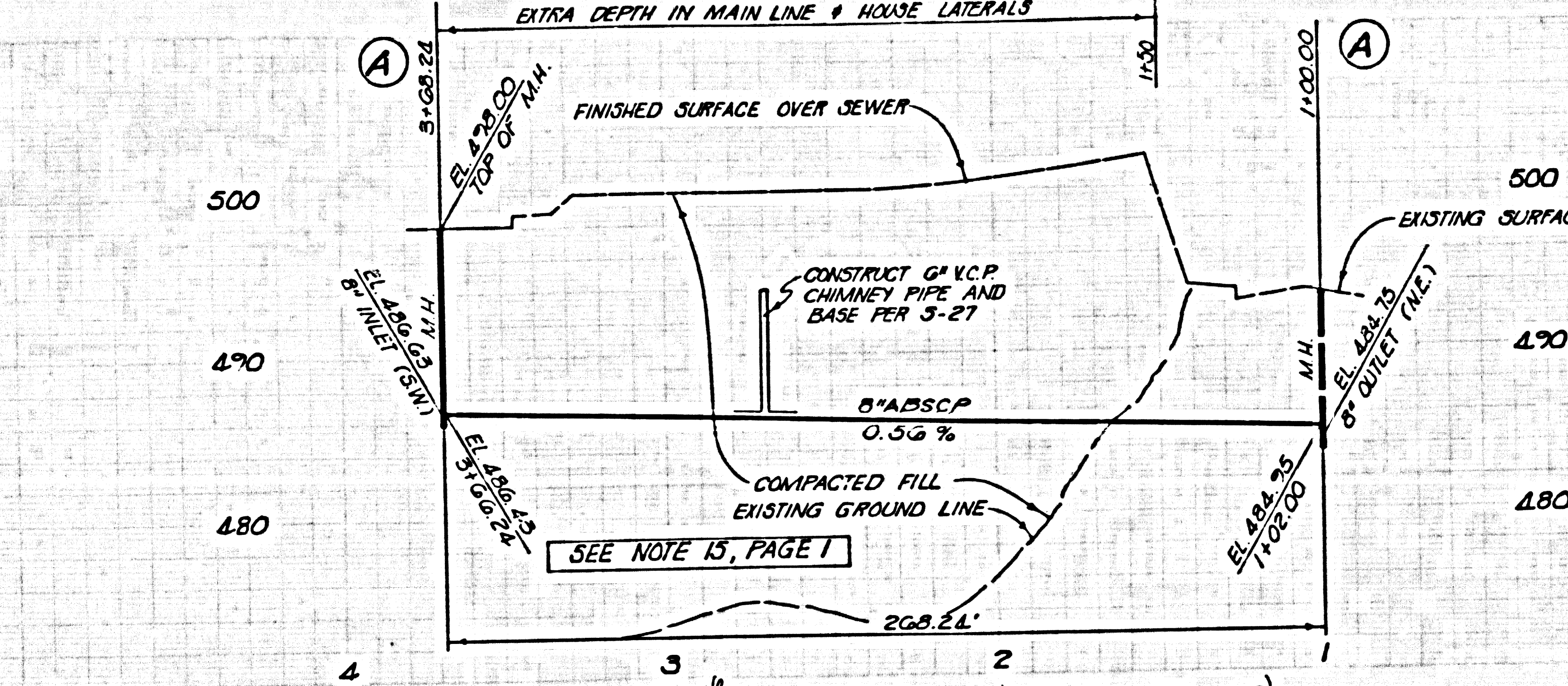
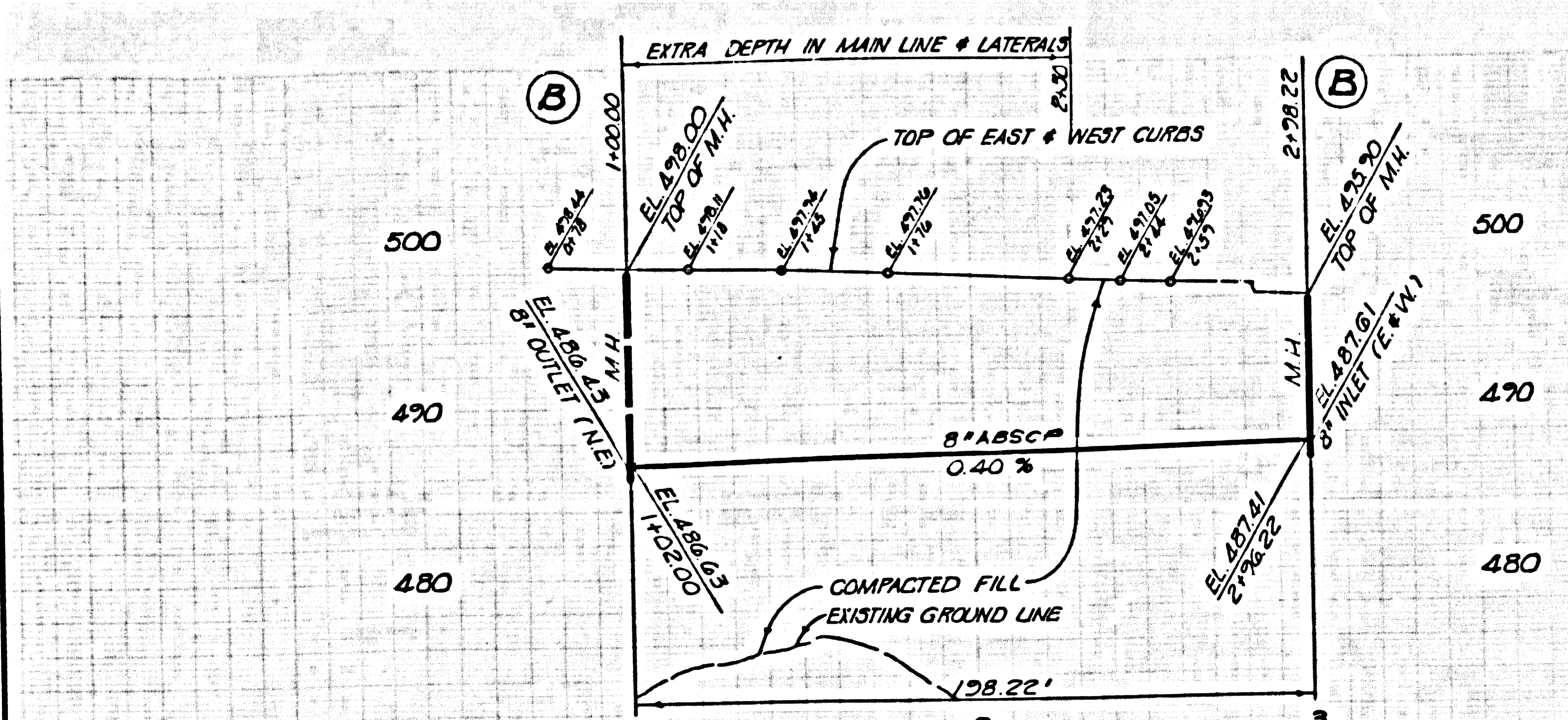
LEGEND	6-1
MINIMUM PUBLIC SAFETY REQUIREMENTS	6-2
BRICK MANHOLE	6-3
STANDARD MANHOLE STEP	6-7
BEDDING FOR SEWER PIPE	6-8
CRABBING AND ENCASING	6-9
WYS OR THE SUPPORT	6-20
ALLOWABLE TRENCH WIDTHS	6-20
LOCKING MANHOLE FRAME AND COVER	6-20
NON-REINFORCED PRECAST CONCRETE MANHOLE	6-26
PRECAST CONCRETE SHALLOW MANHOLE	6-27
CHIMNEY PIPE AND BASE	6-27

COUNTY OF LOS ANGELES, CALIFORNIA
STEPHEN J. KOONKE, COUNTY ENGINEER
JOHN D. PARKHURST, CHIEF ENGINEER
APPROVED [Signature] 2/21/78 REGIONAL ENGINEER
APPROVED [Signature] 2/21/78 OFFICE ENGINEER
CHECKED [Signature] 7/24/78
REG. C.E. No. 18156
LA PUENTE BLDG. DIST. 2
J.N. 0250.02



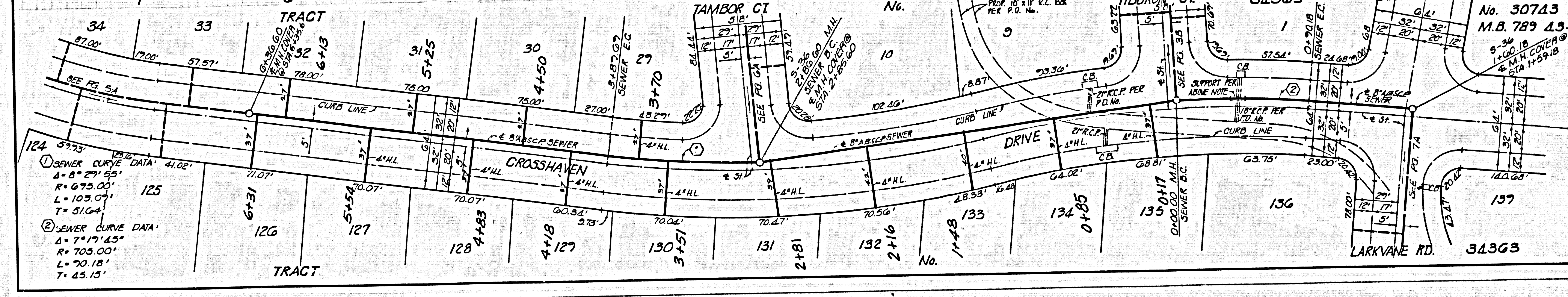
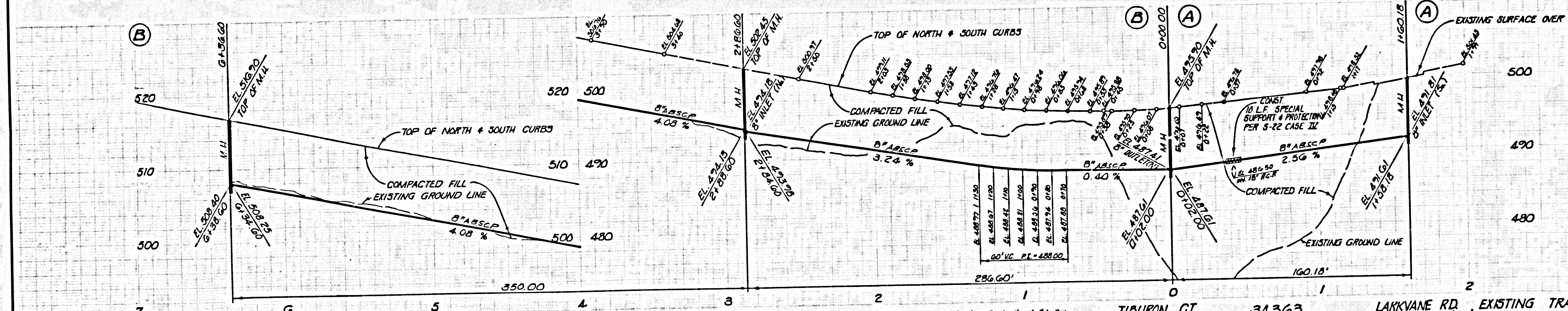
DOUBLE SCALE
COLLECT CHARGES
AS INDICATED

47566



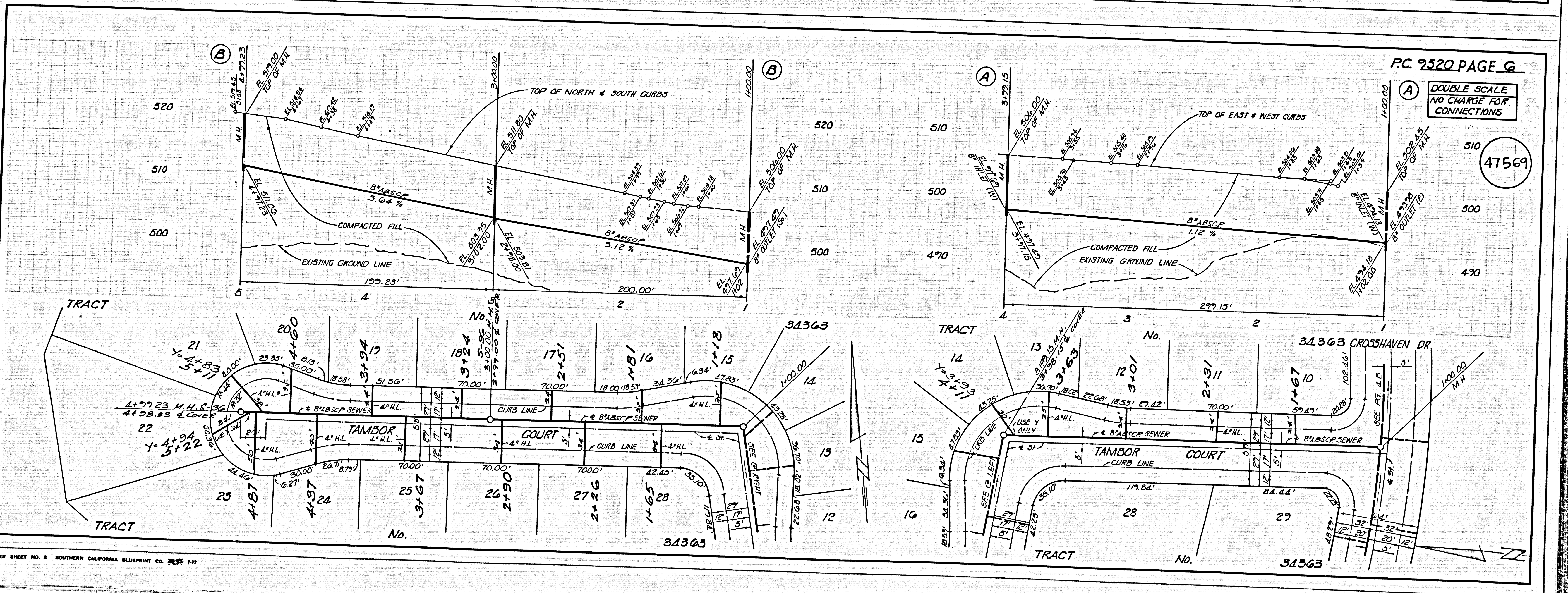
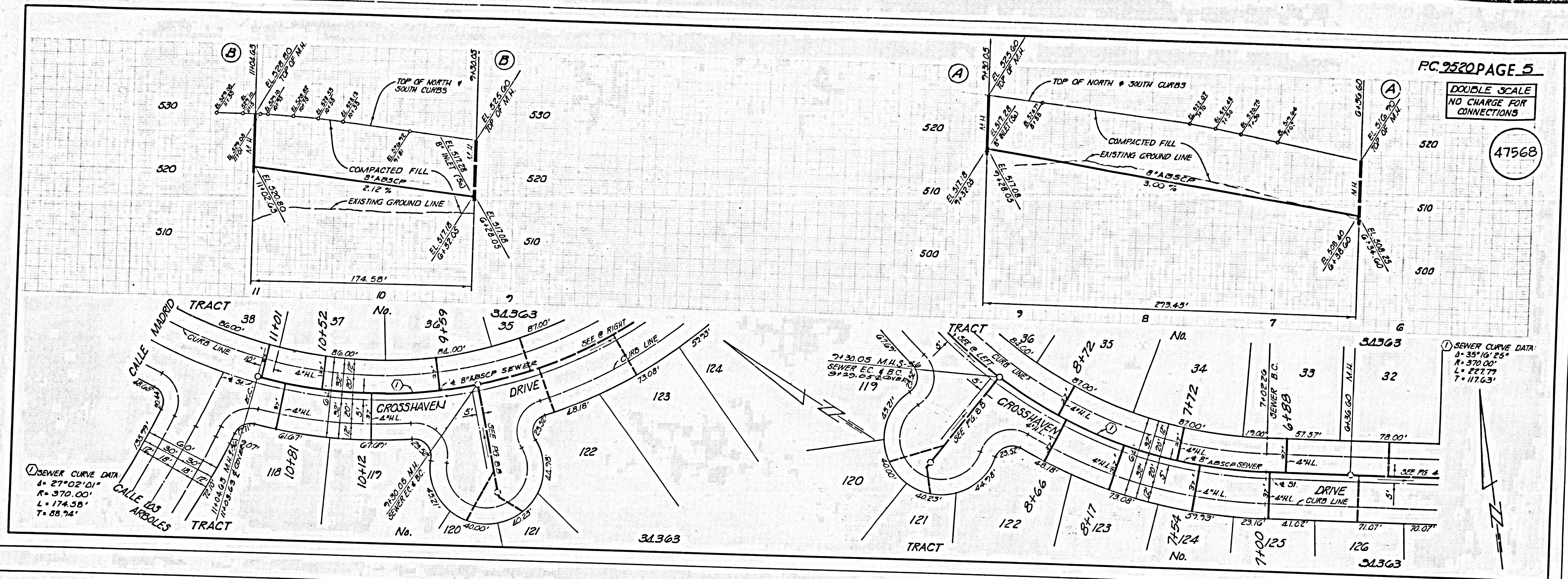
DOUBLE SCALE
NO CHARGE FOR
CONNECTIONS

47567

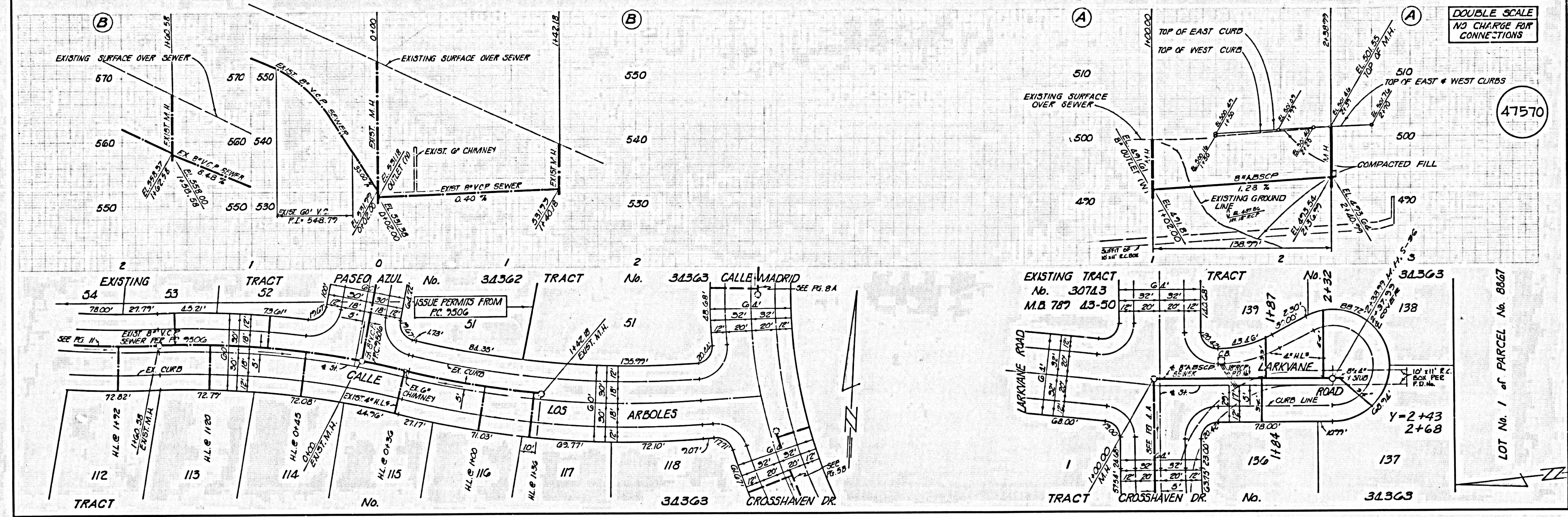


SEWER CURVE DATA
 Δ = 8° 29' 55"
 R = 675.00'
 L = 103.07'
 T = 51.64'

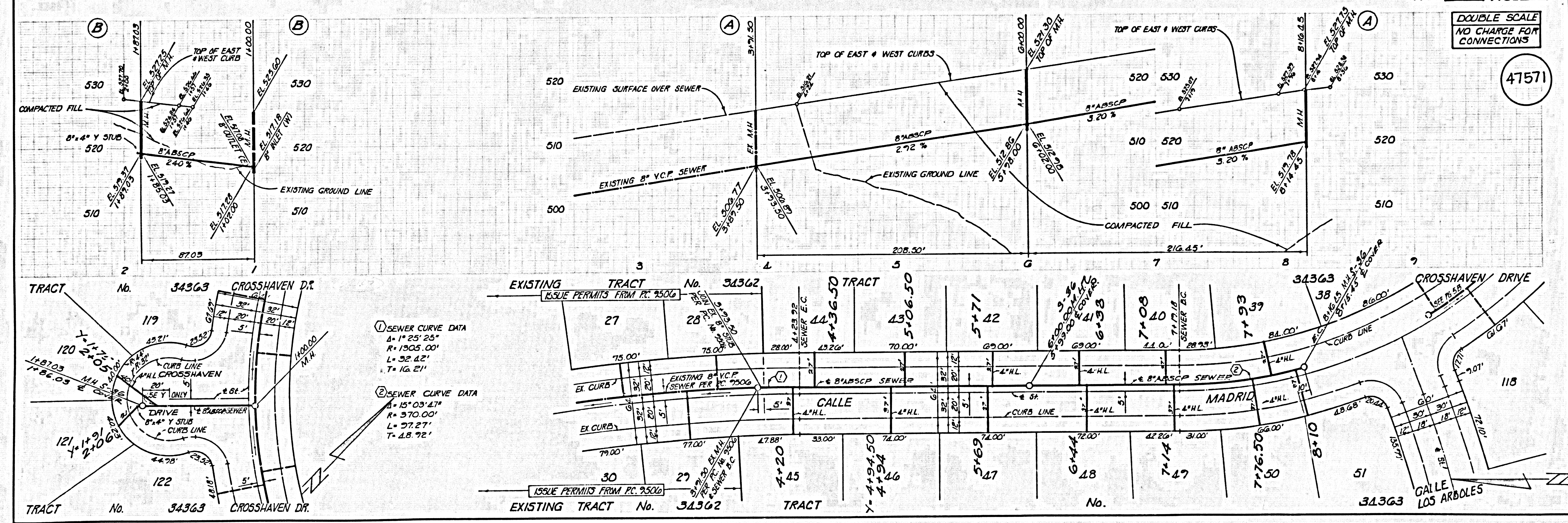
SEWER CURVE DATA
 Δ = 7° 17' 45"
 R = 705.00'
 L = 70.18'
 T = 45.13'



DOUBLE SCALE
NO CHARGE FOR
CONNECTIONS



DOUBLE SCALE
NO CHARGE FOR
CONNECTIONS

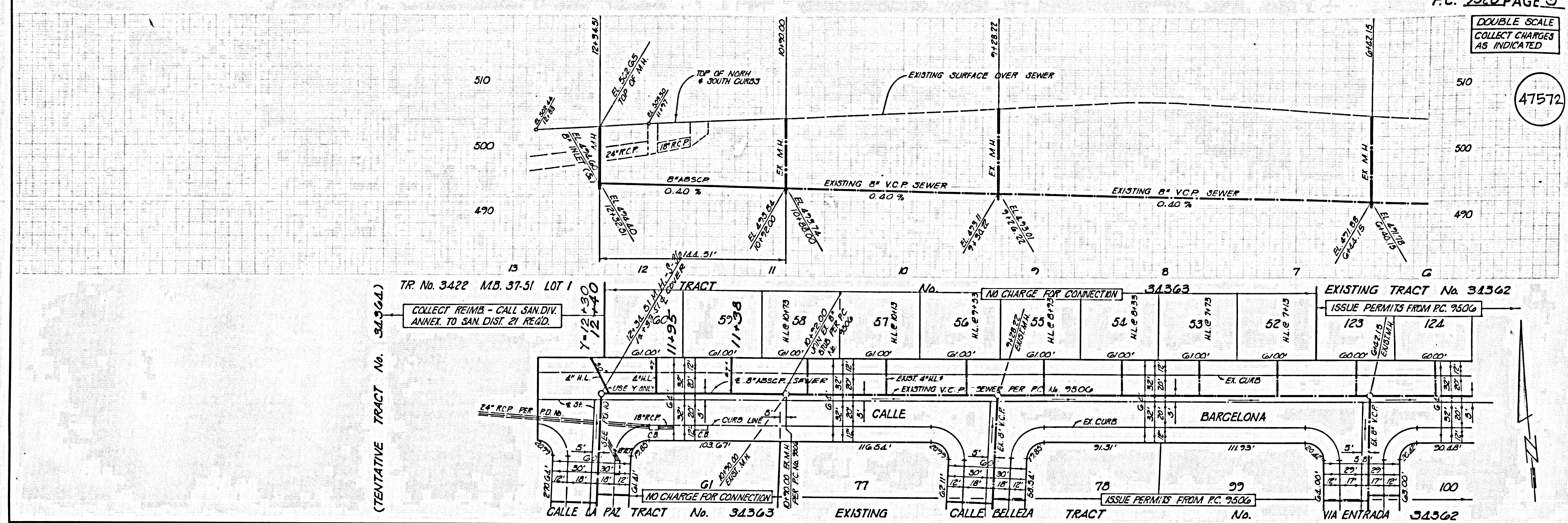


① SEWER CURVE DATA
 $\Delta = 1^\circ 25' 25''$
 $R = 1303.00'$
 $L = 32.42'$
 $T = 16.21'$

② SEWER CURVE DATA
 $\Delta = 15^\circ 03' 47''$
 $R = 370.00'$
 $L = 77.27'$
 $T = 48.72'$

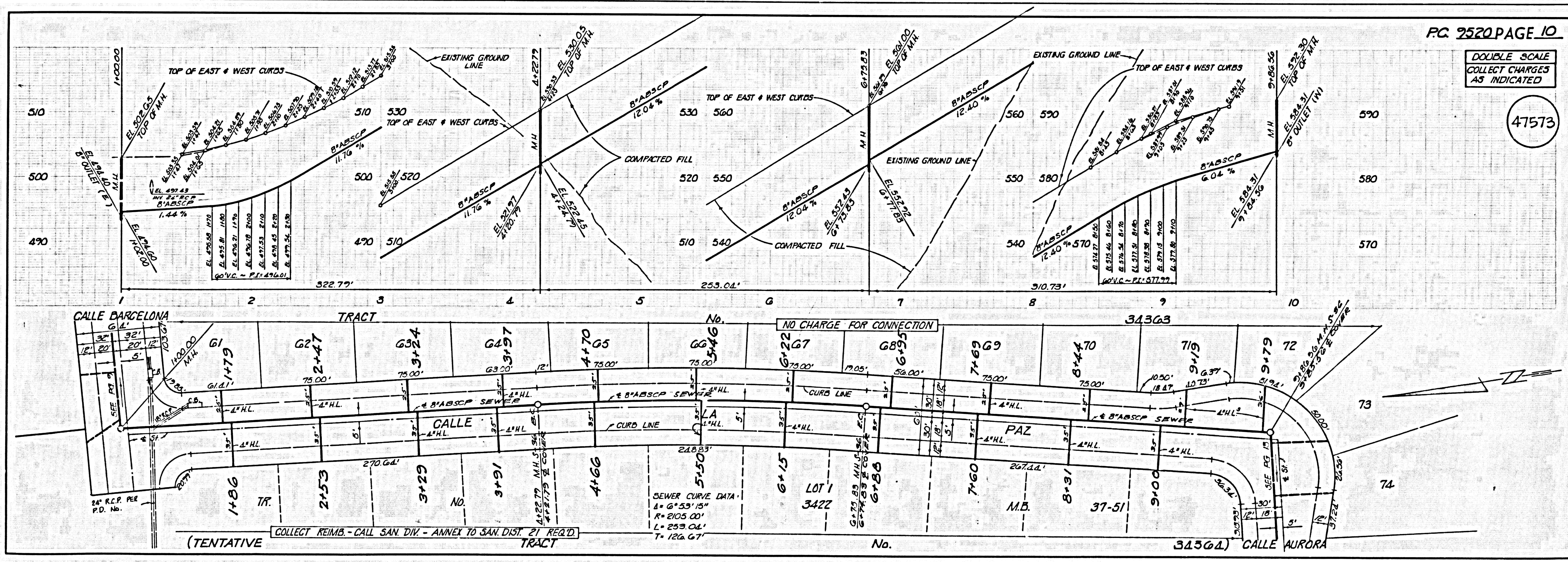
DOUBLE SCALE
COLLECT CHARGES
AS INDICATED

47572



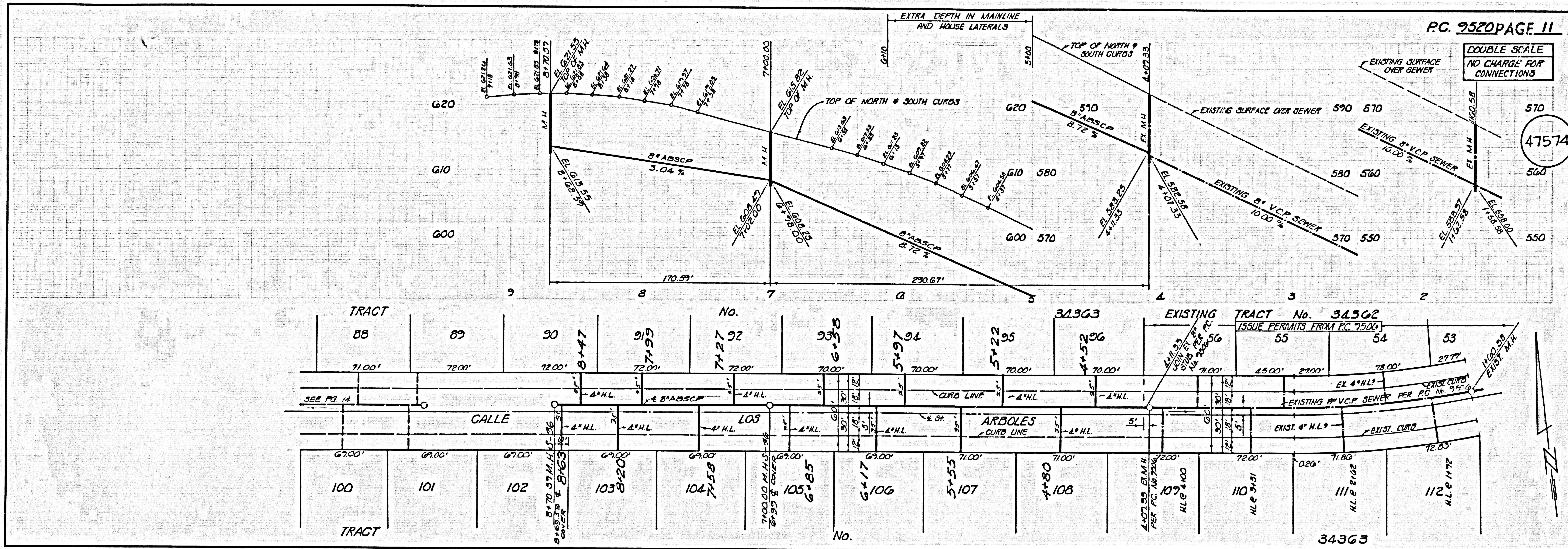
DOUBLE SCALE
COLLECT CHARGES
AS INDICATED

47573



DOUBLE SCALE
NO CHARGE FOR CONNECTIONS

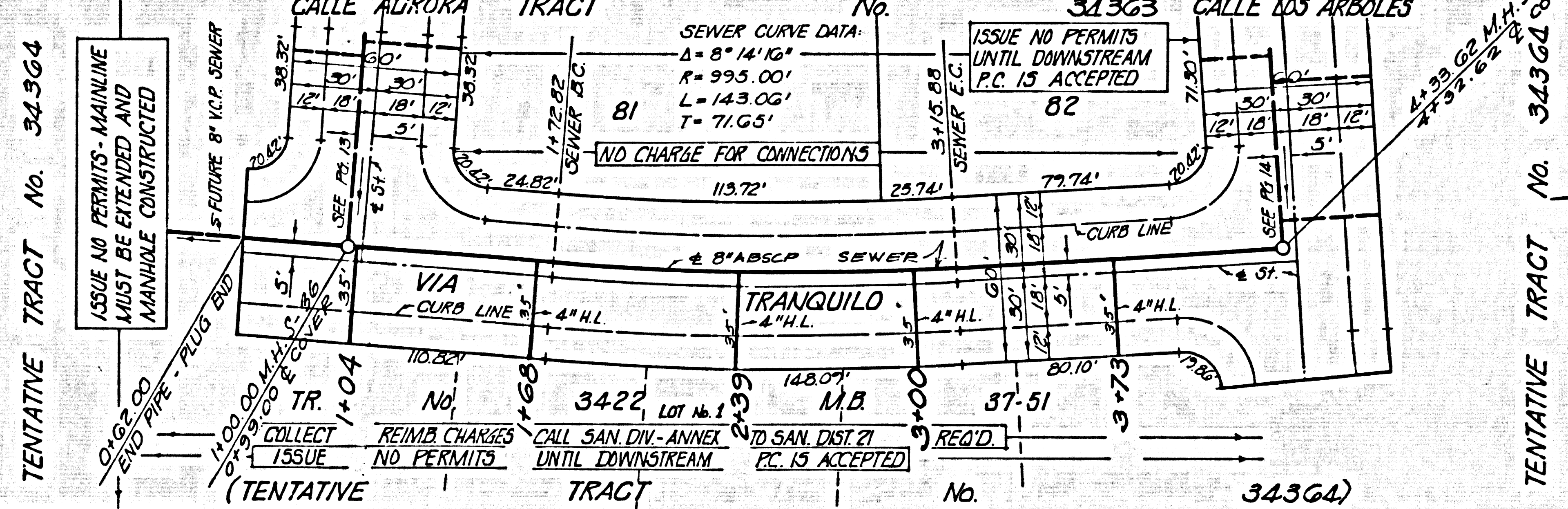
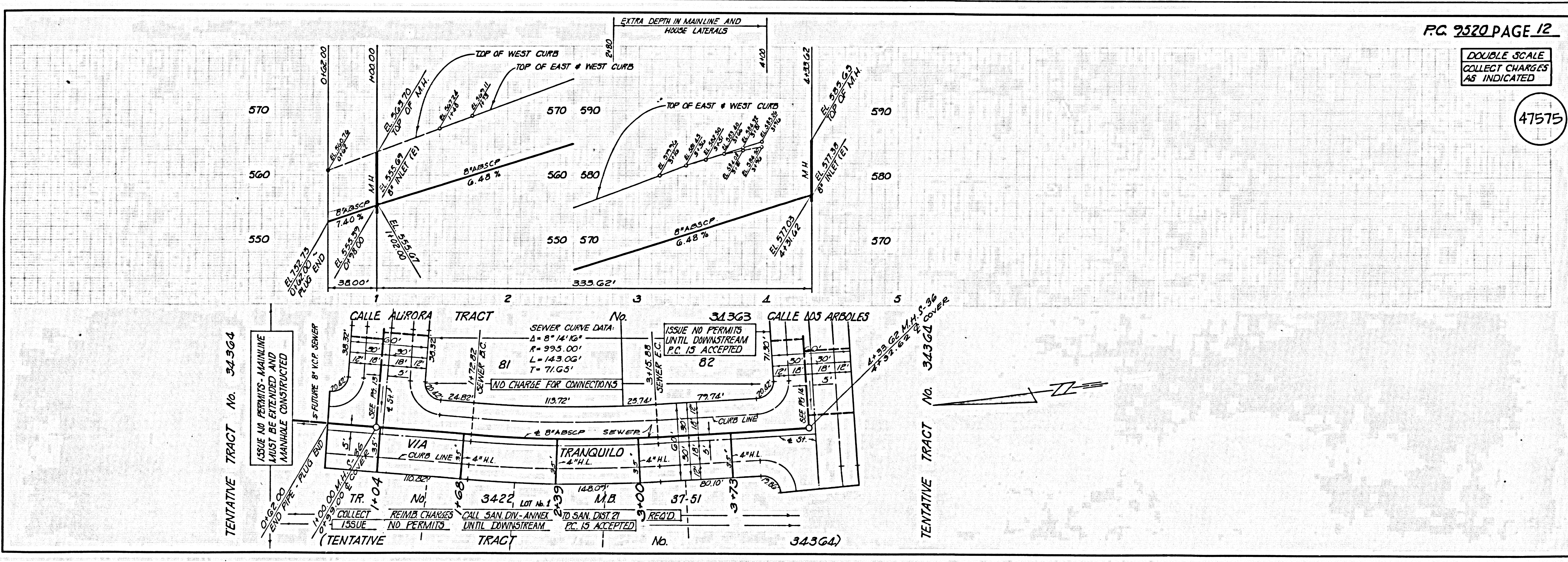
47574



TRACT	88	89	90	91	92	93	94	95	96	97	98	99	100	101	102	103	104	105	106	107	108	109	110	111	112
Width	71.00'	72.00'	72.00'	72.00'	72.00'	72.00'	70.00'	70.00'	70.00'	70.00'	70.00'	70.00'	70.00'	70.00'	70.00'	70.00'	70.00'	70.00'	70.00'	70.00'	70.00'	70.00'	70.00'	70.00'	70.00'
Depth	11.00'	12.00'	12.00'	12.00'	12.00'	12.00'	12.00'	12.00'	12.00'	12.00'	12.00'	12.00'	12.00'	12.00'	12.00'	12.00'	12.00'	12.00'	12.00'	12.00'	12.00'	12.00'	12.00'	12.00'	12.00'

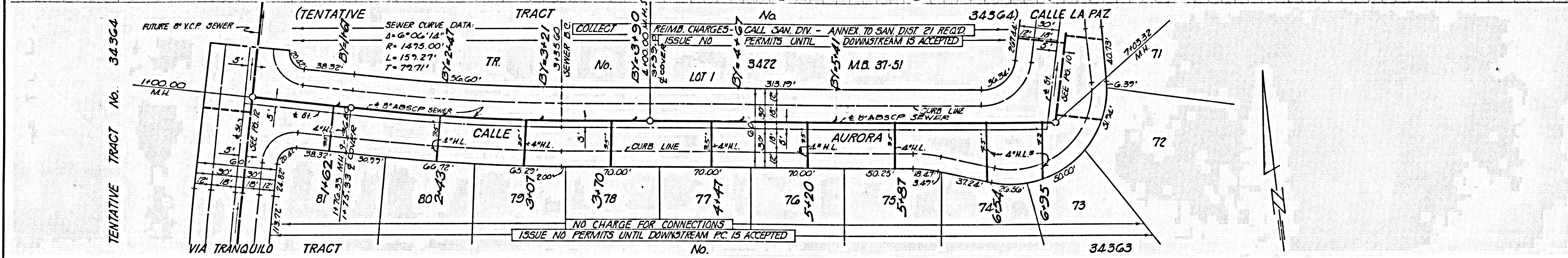
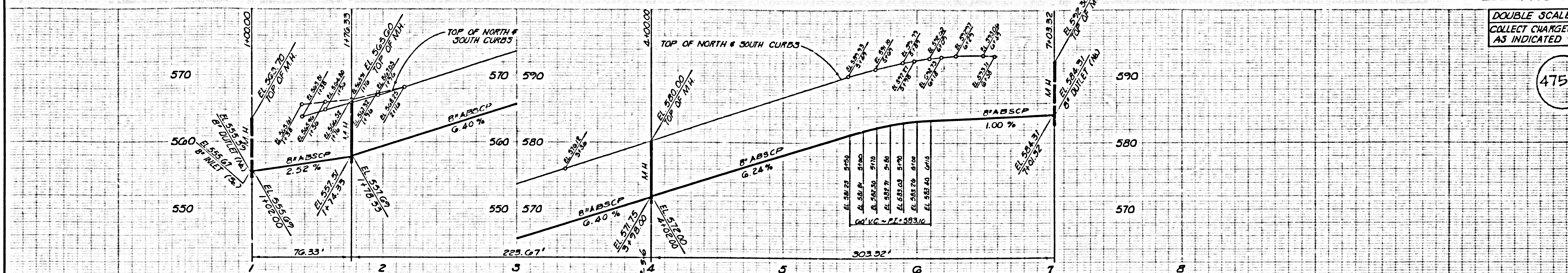
DOUBLE SCALE
COLLECT CHARGES AS INDICATED

47575



DOUBLE SCALE
COLLECT CHARGES
AS INDICATED

47576



DOUBLE SCALE
COLLECT CHARGES
AS INDICATED

47577

