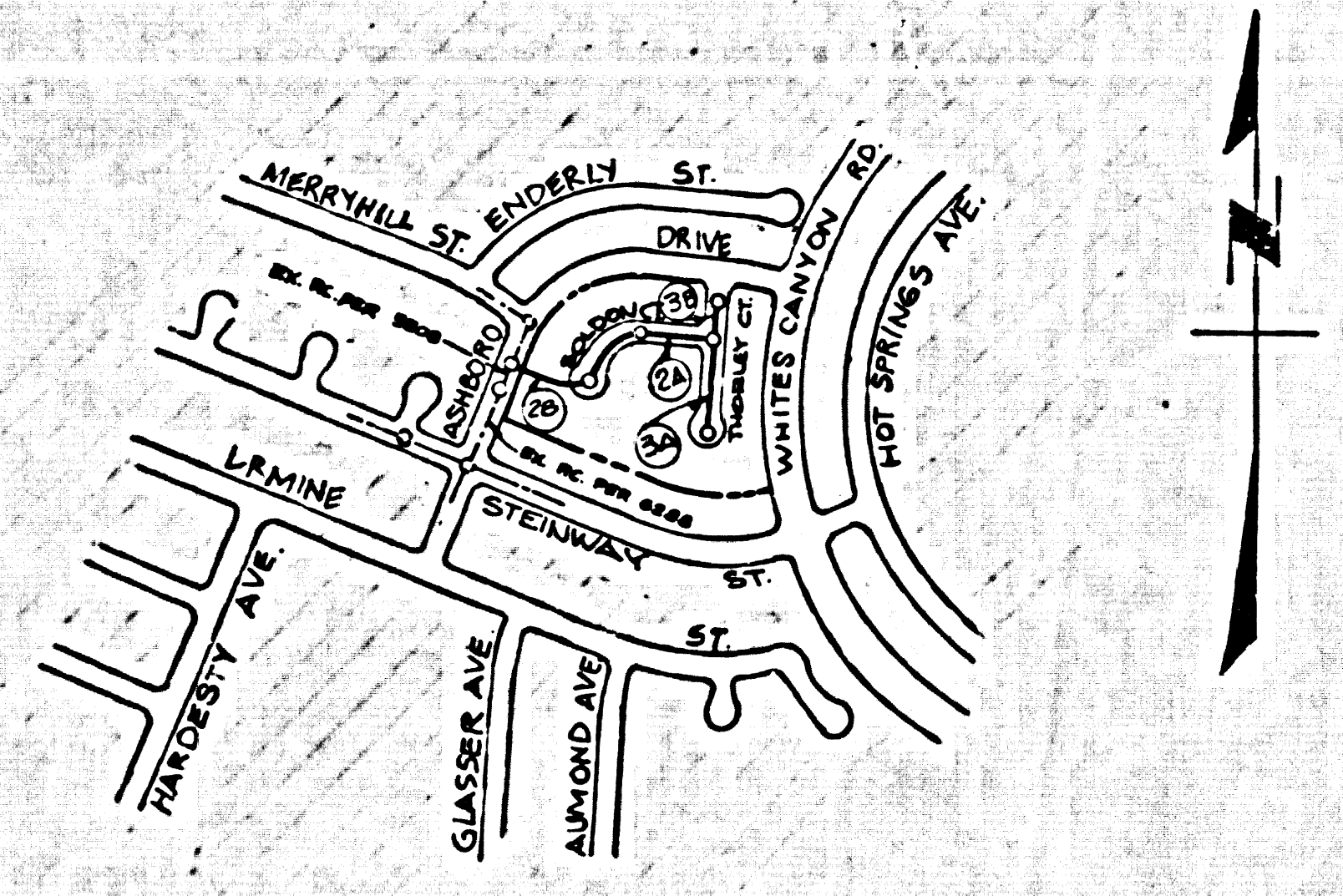


B.M. BL 3990 ELEV. 1368.37
 L & T IN C.B. 15 FT S BCR 95 FT S
 4.48 FT W CL INT. SOLEDAD CT. RD.
 & WHITES CT. RD.
 QUAD. NEWHALL 19 72



INDEX MAP
 SCALE: 1" = 600'
PC. 9523

NOTE:
 NUMBERS IN CIRCLES
 INDICATE PAGE NUMBERS

NO CONNECTION FOR THE DISPOSAL OF INDUSTRIAL WASTES
 SHALL BE MADE TO SEWERS SHOWN ON THESE DRAWINGS UNTIL
 A PERMIT FOR INDUSTRIAL WASTE WATER DISCHARGE HAS BEEN
 ISSUED BY THE SANITATION DISTRICTS FOR SAID CONNECTION.
 BEFORE BREAKING INTO OR CONSTRUCTION ON A COUNTY
 SANITATION DISTRICT SEWER AND PRIOR TO FINAL ACCEPTANCE
 OF THE PROJECT SANITATION DISTRICT INSPECTOR SHALL BE
 NOTIFIED BY PHONE 962-8600. SU THAT REQUIRED INSPECTION
 CAN BE MADE.

- GENERAL NOTES:**
- ELEVATIONS ARE IN FEET ABOVE U.S.C. & G.S. SEA LEVEL DATUM OF 1929.
 - NO REVISIONS SHALL BE MADE IN THESE PLANS WITHOUT THE APPROVAL OF THE COUNTY ENGINEER.
 - NO REPRESENTATIVE OF THE COUNTY ENGINEER WILL SURVEY OR LAY OUT ANY PORTION OF THE WORK.
 - GRADES TO WHICH THIS IMPROVEMENT IS TO BE CONSTRUCTED ARE SHOWN ON PLANS AND PROFILES. GRADE POINTS FOR TOP OF CURB, CENTER LINE OF STREETS, OR CENTER LINE OF ALLEYS ARE SHOWN BY CIRCLES ON PROFILES. AT ALL POINTS BETWEEN DESIGNATED POINTS THE GRADE SHALL BE ESTABLISHED SO AS TO CONFORM TO A STRAIGHT LINE DRAWN BETWEEN SAID DESIGNATED POINTS.
 - THE PRIVATE ENGINEER SHALL FURNISH THE COUNTY ENGINEER WITH GRADE SHEETS AND STATIONING FOR ALL HOUSE LATERALS AND 12" OR 18" BRANCHES AND SHALL PROVIDE STAKES FOR THEM AT THEIR PROPER LOCATIONS WITH STATIONING PLAINLY MARKED. ALL HOUSE LATERALS SHALL BE CONSTRUCTED ON A STRAIGHT ALIGNMENT AT RIGHT ANGLES FROM THE MAIN LINE SEWER EXCEPT AS SHOWN ON THE PLANS. HOUSE LATERALS FROM CHIMNEYS SHALL NOT HAVE AN ANGLE OF LESS THAN 45° WITH THE MAIN LINE SEWER. ANY CHANGE IN ALIGNMENT SHALL BE REQUESTED IN WRITING BY THE PRIVATE ENGINEER.
 - THE PRIVATE ENGINEER SHALL FURNISH THE HOUSE LATERAL DEPTH AT THE PROPERTY LINE BELOW THE TOP OF CURB ELEVATION FOR EACH HOUSE LATERAL ON THE GRADE SHEET.
 - BEFORE WORK CAN BE STARTED, THE CONTRACTOR MUST OBTAIN A PERMIT TO EXCAVATE IN COUNTY STREETS FROM THE L.A. COUNTY ROAD DEPT., DISTRICT OFFICE NO. 4, AND PAY A FEE TO THE COUNTY ENGINEER, SANTA CLARITA VALLEY REGIONAL OFFICE, TO COVER THE COST OF CONSTRUCTION INSPECTION AND RECORD PLANS.
 - NO WORK IS TO BE DONE IN A STATE HIGHWAY. A PERMIT MUST BE OBTAINED FROM THE STATE OF CALIFORNIA, DIVISION OF HIGHWAYS, 130 SOUTH SPRING STREET, LOS ANGELES, CALIFORNIA.
 - APPROVAL OF THIS PLAN BY THE COUNTY OF LOS ANGELES DOES NOT CONSTITUTE A REPRESENTATION AS TO THE ACCURACY OF THE LOCATION OF OR THE EXISTENCE OR NON-EXISTENCE OF ANY UNDERGROUND UTILITY PIPE, OR STRUCTURE WITHIN THE LIMITS OF THIS PROJECT. THIS NOTE APPLIES TO ALL PAGES.
 - REFER TO SECTION 7-10.4.1 OF THE STANDARD SPECIFICATIONS, REGARDING SAFETY ORDERS.
 - PRIOR TO THE ISSUANCE OF THE REQUIRED SEWER CONSTRUCTION PERMIT BY THE COUNTY ENGINEER THE CONTRACTOR SHALL OBTAIN A PERMIT TO EXCAVATE FROM THE STATE OF CALIFORNIA, DIVISION OF INDUSTRIAL SAFETY.
 - PRIOR TO THE ISSUANCE OF THE REQUIRED SEWER CONSTRUCTION PERMIT BY THE COUNTY ENGINEER THE CONTRACTOR SHALL OBTAIN A CERTIFICATE OF WORKERS COMPENSATION INSURANCE, LISTING LOS ANGELES COUNTY ENGINEER, 23757 W. VALENCIA BLVD., VALENCIA CALIFORNIA 91355 AS THE CERTIFICATE HOLDER.

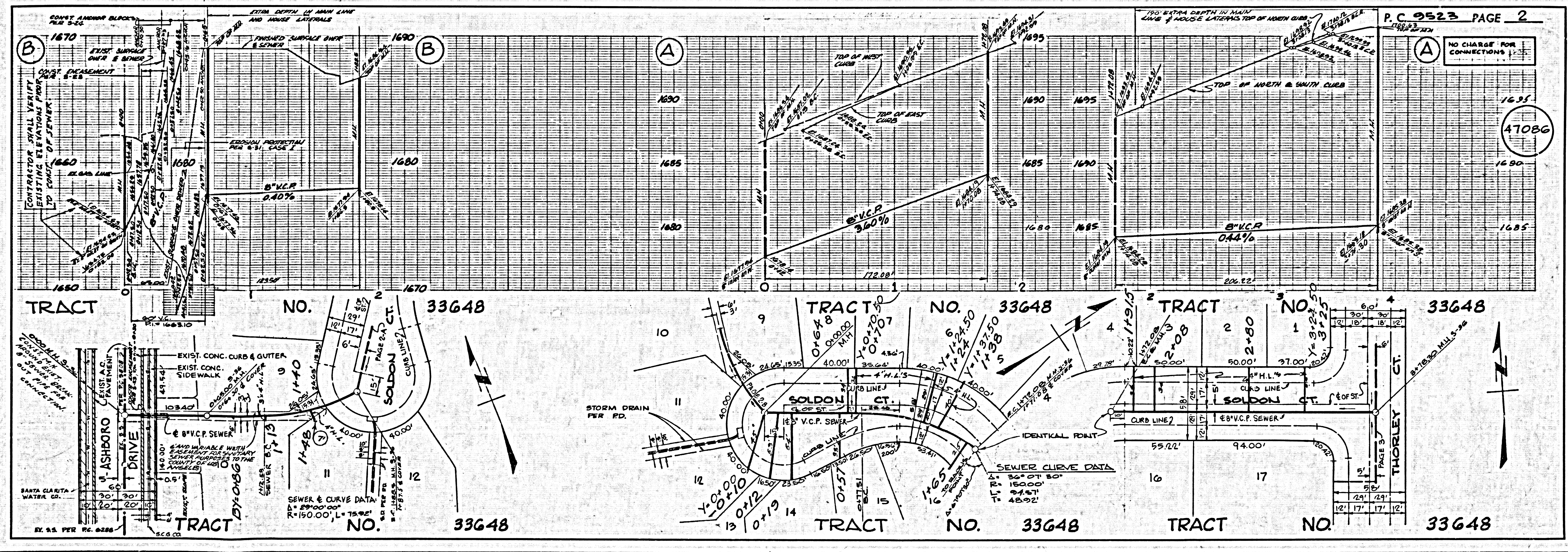
- CONSTRUCTION NOTES:**
- WORK SHALL BE CONSTRUCTED ACCORDING TO THE STANDARD SPECIFICATIONS FOR PUBLIC WORKS CONSTRUCTION (1976 EDITION) AND COUNTY ENGINEER SPECIAL PROVISIONS FOR THE CONSTRUCTION OF SANITARY SEWERS DATED SEPTEMBER 1974. THIS SHALL BE PROSECUTED IN THE PRESENCE OF THE COUNTY ENGINEER.
 - THE CONTRACTOR SHALL NOTIFY THE SANITATION DISTRICT BY TELEPHONE (213) 946-7283 AT LEAST TWENTY-FOUR HOURS BEFORE STARTING ANY WORK UNDER THIS CONTRACT.
 - HOUSE LATERALS TO BE CONSTRUCTED WITH INVERTS AT PROPERTY LINE 4 FEET BELOW CURB GRADE EXCEPT AS NOTED.
 - WYE OR TEE BRANCHES MAY BE USED FOR CONNECTIONS TO MAINLINE SEWERS EXCEPT AS NOTED.
 - ALL STRUCTURES SHALL BE EITHER BRICK MANHOLES PER S-3.0 PRECAST CONCRETE MANHOLES PER S-3.6, EXCEPT AS NOTED.
 - PROVIDE STAKES ON THE PROPERTY LINE OR PROPERTY LINES PRODUCED AT RIGHT ANGLES TO THE SEWER LINE AT THE CENTER LINE OF EACH MANHOLE.
 - MANHOLE TOPS IN UNIMPROVED RIGHTS OF WAY TO BE SIX INCHES ABOVE FINISHED GRADE.
 - VERIFIED CLAY PIPE JOINTS SHALL BE TYPE "D", "T", OR "O" PER STANDARD SPECIFICATIONS SECTION 306-2.
 - IF A POWER POLE IS WITHIN THREE FEET OF THE SEWER, THE SEWER SHALL BE ENCASED, PER S-3.3, CASE II, TWO FEET ON EACH SIDE FROM THE POINT OF INTERFERENCE.
 - IF DURING THE COURSE OF CONSTRUCTION IT IS DETERMINED THAT THERE IS LESS THAN FOUR FEET OF COVER OVER THE TOP OF A MAIN LINE OR HOUSE LATERAL V.C.P. SEWER WHICH IS NOT INDICATED ON THE PLANS, THE PIPE SHALL BE ENCASED PER S-2.3, CASE II UNLESS OTHERWISE APPROVED BY THE COUNTY ENGINEER.
 - ALL JOINTS BETWEEN CAST IRON PIPE AND VERIFIED CLAY PIPE SHALL BE MADE WITH A RUBBER SLEEVE JOINT, TYPE "C" OR "D", WITH BUSHING IF NECESSARY PER STANDARD SPECIFICATIONS SECTION 306-2.
 - SEWERS TO BE TESTED FOR LEAKAGE PER SECTION 306.1.6 OF THE STANDARD SPECIFICATIONS AND SPECIAL PROVISIONS.
 - RESURFACE ALL TRENCHES WITHIN PAVED AREAS TO MEET L.A. COUNTY ROAD DEPT. OR CALIFORNIA STATE HIGHWAY REQUIREMENTS IN ACCORDANCE WITH PERMITS.
 - FULL COMPLIANCE WITH SECTION 306-1.8.5 OF THE SPECIAL PROVISIONS WILL BE REQUIRED FOR BACKFILL IN STREETS. CERTIFICATION OF BACKFILL COMPACTION AND SAND EQUIVALENTS BY A QUALIFIED, REGISTERED TESTING LABORATORY SHALL BE PROVIDED BY THE PERMITTEE PRIOR TO THE ISSUANCE OF A CERTIFICATE OF PARTIAL ACCEPTANCE.

TO BE CONSTRUCTED IN
TRACT NO. 33648
PRIVATE CONTRACT NO. 9523
 W.S.
 2 SHEETS, 3 PAGES (47085)
 SCALE: VERT. 1" = 4' HORIZ. 1" = 40'
 JULY, 1978
 PREPARED IN THE OFFICES OF
BOYD BEASTROM & ASSOC.
 114 ESB WARDNER PLAZA, PITT RIVERWAY BLDG.
 WOODLAND HILLS, CALIF. 91364 (818) 985-9689
 BY: Boyd Beastron
 REG. C.E. No. 15674

THE FOLLOWING LATEST REVISED STANDARD PLANS ON FILE IN THE OFFICE OF THE COUNTY ENGINEER SHALL APPLY IN THE CONSTRUCTION OF THIS PROJECT.

LEGEND	8-1
MINIMUM PUBLIC SAFETY REQUIREMENTS	8-2
BRICK MANHOLE	8-3
STANDARD MANHOLE STEP	8-7
BEDDING FOR SEWER PIPE	8-21
CRADLING AND ENCASEMENT	8-23
WYE OR TEE SUPPORT	8-26
ALLOWABLE TRENCH WIDTHS	8-30
LOCKING MANHOLE FRAME AND COVER	8-33
NON-REINFORCED PRECAST CONCRETE MANHOLE	8-36
BRICK PROTECTION IN STREET OPENINGS	8-38
ANCHOR BLOCKS	8-39

COUNTY OF LOS ANGELES, CALIFORNIA
STEPHEN J. KRONCE COUNTY ENGINEER
JOHN D. PARKHURST, CHIEF ENGINEER
 APPROVED Samy K. Hida (DATE) APPROVED John D. Parkhurst 8/22/78
 CHECKED Barbara Wilhelmy 8/21/78 (DATE)
 REG. C.E. NO. 10673
 SANTA CLARITA VALLEY BLDG. DIST. 02 J.N. 036802



NO CHARGE FOR CONNECTIONS

47087

