

TO BE CONSTRUCTED IN
TRACT NO. 30893
 PRIVATE CONTRACT NO. 9526

W.S. 39-83
 3 SHEETS, 6 PAGES
 SCALE: VERT. 1"=8' FEBRUARY, 1978
 HORIZ. 1"=40'
 PREPARED IN THE OFFICES OF
TOUPS CORPORATION
 972 TOWN & COUNTRY ROAD, SUITE 200, OAKLAND, CALIF. 94612
 BY: *James W. Troup*
 REG. C. E. No. 28807

47983

- GENERAL NOTES: DOUBLE SCALE**
1. ELEVATIONS ARE BY THE BENCH U.S.C. & G.S. MEAN LEVEL DATUM OF 1929.
 2. NO REVISIONS SHALL BE MADE IN THESE PLANS WITHOUT THE APPROVAL OF THE COUNTY ENGINEER.
 3. NO REPRESENTATIVE OF THE COUNTY ENGINEER WILL SURVEY OR LAY OUT ANY PORTION OF THE WORK.
 4. GRADES TO WHICH THIS IMPROVEMENT IS TO BE CONSTRUCTED ARE SHOWN ON PLANS AND PROFILES. GRADE POINTS FOR TOP OF CURBS, CENTER LINE OF STREETS, OR CENTER LINE OF ALLEYS ARE SHOWN BY CIRCLES ON PROFILES. AT ALL POINTS BETWEEN DESIGNATED POINTS THE GRADE SHALL BE ESTABLISHED SO AS TO CONFORM TO A STRAIGHT LINE DRAWN BETWEEN SAID DESIGNATED POINTS.
 5. THE PRIVATE ENGINEER SHALL FURNISH THE COUNTY ENGINEER WITH GRADE SHEETS AND STATIONING FOR ALL HOUSE LATERALS AND "Y" OR "T" BRANCHES AND SHALL PROVIDE STAKES FOR THEM AT THESE PROPER LOCATIONS WITH STATIONING PLAINLY MARKED. ALL HOUSE LATERALS SHALL BE CONSTRUCTED IN A STRAIGHT ALIGNMENT AT RIGHT ANGLES FROM THE MAIN LINE SEWER EXCEPT AS SHOWN ON THE PLANS. HOUSE LATERALS FROM CHIMNEYS SHALL NOT HAVE AN ANGLE OF LESS THAN 45° WITH THE MAIN LINE SEWER. ANY CHANGE IN ALIGNMENT SHALL BE REQUESTED IN WRITING BY THE PRIVATE ENGINEER.
 6. THE PRIVATE ENGINEER SHALL FURNISH THE HOUSE LATERAL DEPTH AT THE PROPERTY LINE BELOW THE TOP OF CURB ELEVATION FOR EACH HOUSE LATERAL ON THE GRADE SHEET.
7. BEFORE WORK CAN BE STARTED, THE CONTRACTOR MUST OBTAIN A PERMIT TO EXCAVATE IN COUNTY STREETS FROM THE L.A. COUNTY ROAD DEPT., DISTRICT OFFICE NO. 1, AND PAY A FEE TO THE COUNTY ENGINEER, 200 E. BROADWAY, 4TH FL., S.F. 94104.
 8. REGIONAL OFFICE TO COVER THE COST OF CONSTRUCTION INSPECTION AND RECORD PLANS.
 9. IF WORK IS TO BE DONE IN A STATE HIGHWAY, A PERMIT MUST BE OBTAINED FROM THE STATE OF CALIFORNIA, DIVISION OF HIGHWAYS, 120 SOUTH SPRING STREET, LOS ANGELES, CALIFORNIA.
 10. APPROVAL OF THESE PLANS BY THE COUNTY OF LOS ANGELES DOES NOT CONSTITUTE A REPRESENTATION AS TO THE ACCURACY OF THE LOCATION OF OR THE EXISTENCE OR NON-EXISTENCE OF ANY UNDERGROUND UTILITY PIPE, OR STRUCTURE WITHIN THE LIMITS OF THIS PROJECT. THIS NOTE APPLIES TO ALL PAGES.
 11. REFER TO SECTION 7-16.4.3 OF THE STANDARD SPECIFICATIONS, REGARDING SAFETY SIGNS.
 12. PRIOR TO ISSUANCE OF REQUIRED SEWER CONSTRUCTION PERMIT BY THE COUNTY ENGINEER, THE CONTRACTOR SHALL OBTAIN A PERMIT TO EXCAVATE FROM THE STATE OF CALIFORNIA, DEPARTMENT OF INDUSTRIAL RELATIONS, DIVISION OF INDUSTRIAL SAFETY, AND SHALL FILE A CERTIFICATE OF WORKERS' COMPENSATION WITH THE COUNTY ENGINEER.

- CONSTRUCTION NOTES:**
1. WORK SHALL BE CONSTRUCTED ACCORDING TO THE STANDARD SPECIFICATIONS FOR PUBLIC WORKS CONSTRUCTION 1976 EDITION WITH 1977 & 1978 SUPPLEMENTS AND COUNTY ENGINEER SPECIAL PROVISIONS FOR THE CONSTRUCTION OF SANITARY SEWERS DATED SEPTEMBER 21, 1974 AND SHALL BE PROTECTED ONLY IN THE PRESENCE OF THE COUNTY ENGINEER.
 2. THE CONTRACTOR SHALL NOTIFY THE ENVIRONMENTAL DEVELOPMENT DIVISION - PHONE (213) 286-8156, AT LEAST THIRTY (30) DAYS BEFORE STARTING ANY WORK UNDER THIS CONTRACT.
 3. HOUSE LATERALS TO BE CONSTRUCTED WITH INVERTS AT PROPERTY LINE 4 FEET BELOW CURB GRADE EXCEPT AS NOTED.
 4. WYE OR TEE BRANCHES MAY BE USED FOR CONNECTIONS TO MAINLINE SEWERS EXCEPT AS NOTED.
 5. ALL STRUCTURES SHALL BE EITHER BRICK MANHOLES PER 3-3 OR PRECAST CONCRETE MANHOLES PER 3-3A, EXCEPT AS NOTED.
 6. PROVIDE STAKES ON THE PROPERTY LINE OR PROPERTY LINES PRODUCED AT RIGHT ANGLES TO THE SEWER LINE AT THE CENTER LINE OF EACH MANHOLE.
 7. MANHOLE TOPS IN UNIMPROVED RIGHTS OF WAY TO BE SIX INCHES ABOVE FINISHED GRADE.
 8. VITRIFIED CLAY PIPE JOINTS SHALL BE TYPE "B", "T", OR "W" PER STANDARD SPECIFICATIONS SECTION 300-3.
 9. IF A POWER POLE IS WITHIN THREE FEET OF THE SEWER, THE SEWER SHALL BE ENCASED, PER 3-23, CASE X, TWO FEET ON EACH SIDE FROM THE POINT OF INTERFERENCE.
 10. IF DURING THE COURSE OF CONSTRUCTION IT IS DETERMINED THAT THERE IS LESS THAN FOUR FEET OF COVER OVER THE TOP OF A MAIN LINE OR HOUSE LATERAL V.C.P. SEWER WHICH IS NOT INDICATED ON THE PLANS, THE PIPE SHALL BE ENCASED PER 3-23, CASE "D" UNLESS OTHERWISE APPROVED BY THE COUNTY ENGINEER.
 11. ALL JOINTS BETWEEN CAST IRON PIPE AND VITRIFIED CLAY PIPE SHALL BE MADE WITH A RUBBER SLEEVE JOINT, TYPE "C" OR "D", WITH RUBBERING IF NECESSARY PER STANDARD SPECIFICATIONS, SECTION 300-3.
 12. SEWERS TO BE TESTED FOR LEAKAGE PER SECTION 306-4 OF THE STANDARD SPECIFICATIONS AND SPECIAL PROVISIONS.
 13. REINFORCE ALL TRENCHES WITHIN PAVED AREAS TO MEET L.A. COUNTY ROAD DEPT. OR CALIFORNIA STATE HIGHWAY REQUIREMENTS IN ACCORDANCE WITH PERMITS.
 14. FULL COMPLIANCE WITH SECTION 306-1.5-20 OF THE SPECIAL PROVISIONS WILL BE REQUIRED FOR SUCCESSFUL 5" WTE CERTIFICATION OF BACKFILL COMPACTION AND SAND EQUIVALENTS BY A QUALIFIED, REGISTERED TESTING LABORATORY SHALL BE PROVIDED BY THE PERMITTEE PRIOR TO THE ISSUANCE OF A CERTIFICATE OF PARTIAL ACCEPTANCE.

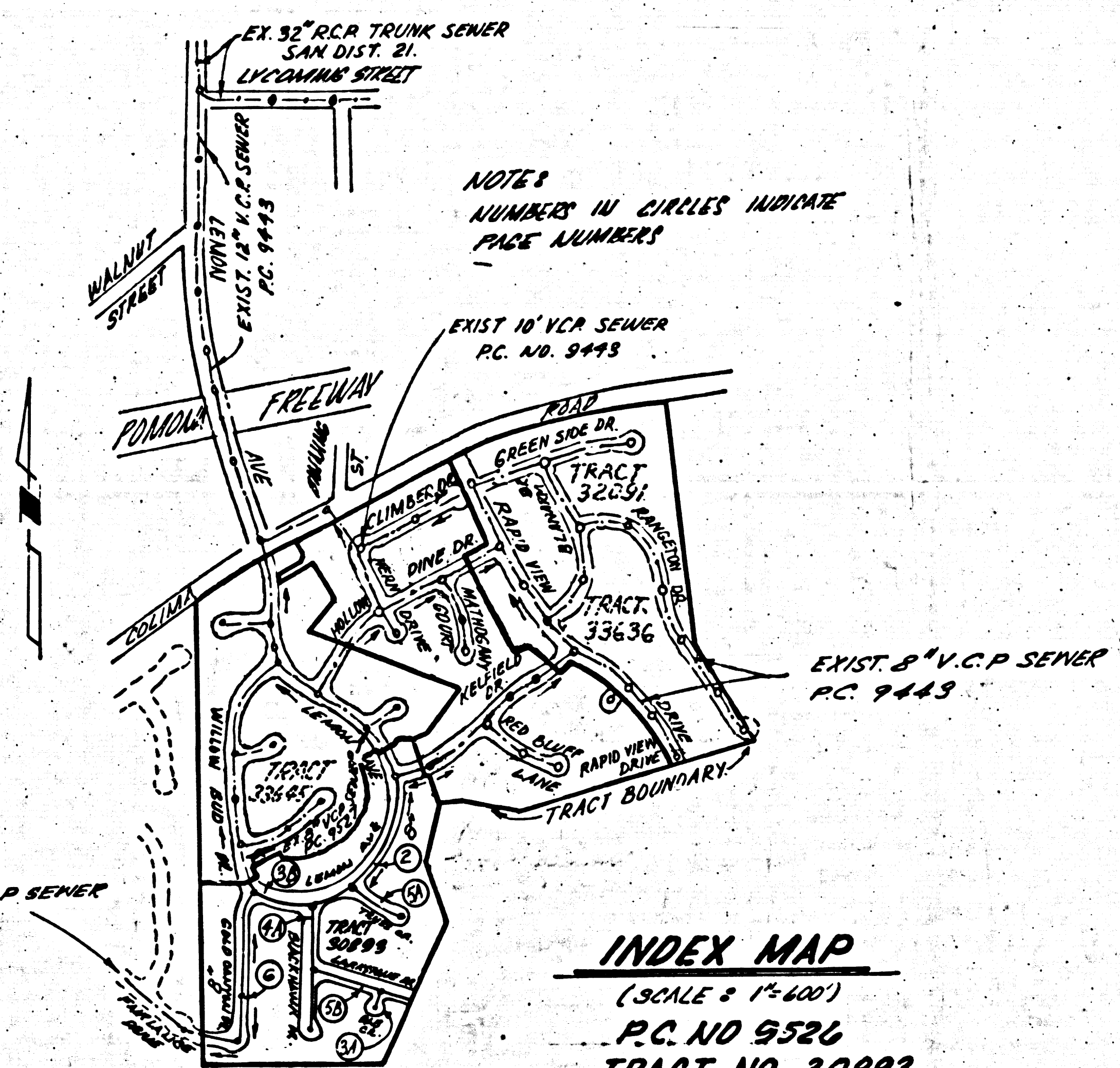
THE FOLLOWING LATEST REVISION STANDARDS PLANS ON FILE IN THE OFFICE OF THE COUNTY ENGINEER SHALL APPLY IN THE CONSTRUCTION OF THIS PROJECT:

LEGEND

- MINIMUM PUBLIC SAFETY REQUIREMENTS 3-4
- BRICK MANHOLES 3-3
- STANDARD MANHOLE STEP 3-17
- BRICKING FOR SEWER PIPE 3-21
- CRACKING AND REINFORCEMENT 3-22
- WYE OR TEE BRANCHES 3-23
- ALLOWABLE TRENCH WIDTHS 3-24
- LOCKING MANHOLE FRAME AND COVER 3-25
- NON-REINFORCED PRECAST CONCRETE MANHOLE 3-26

COUNTY OF LOS ANGELES, CALIFORNIA
 COUNTY ENGINEER: *WALTER E. GARRISON, CHIEF ENGINEER*
 SUPERVISOR: *James W. Troup* APPROVED: *James W. Troup* 7/19/78
 CIVIL ENGINEER
 CHECKED: *Robert David Root* 6/23/78
 DATE
 REG. C. E. NO. 16883
 LA COUNTY BLDG. DIST. 2-0
 I.N. 035802

B.M. 20365 ELEV. 54.8791
 I + I.S. TAG NO. 5054 IN C.B. 111
 IN FUTURE S.C.R. 47' N & 54' E INT.
 CALIMA ROAD & ARKLEY DRIVE
 OYSTERBAY QUAD. 19.25

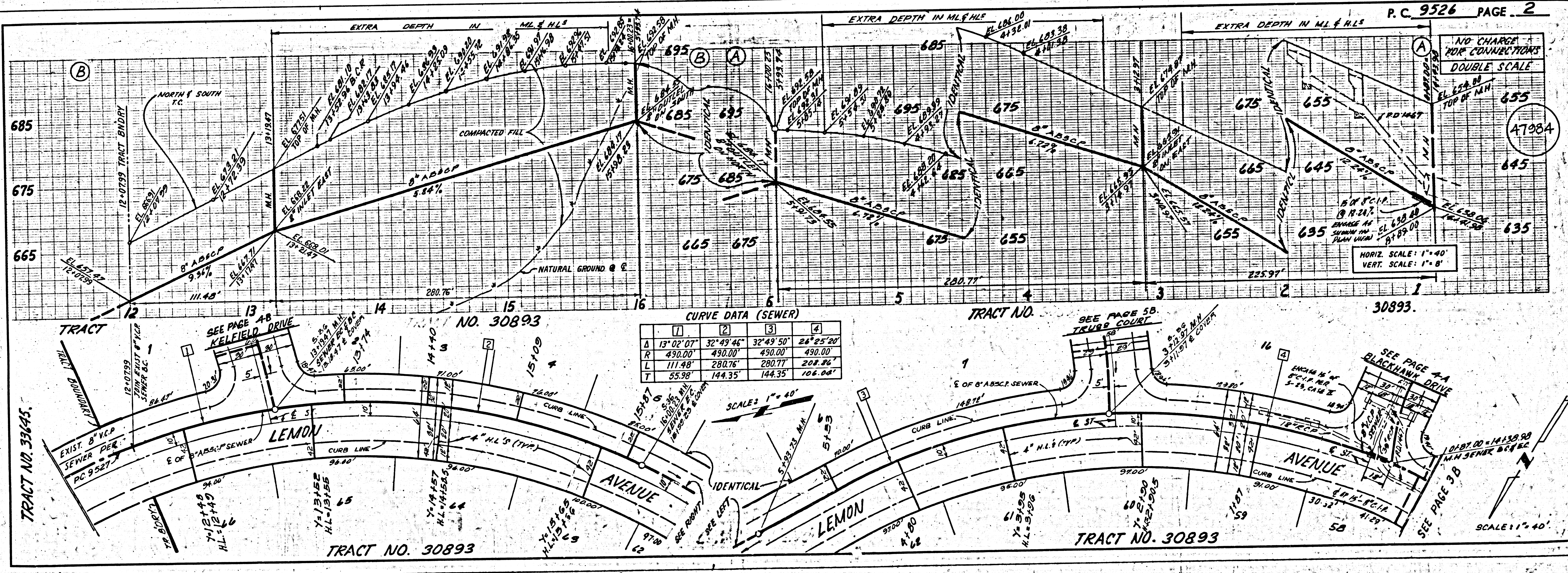


INDEX MAP
 (SCALE = 1"=400')
 P.C. NO. 9526
 TRACT NO. 30893

ISSUE NO PERMIT FOR PORTIONS
 OUTLETING THEM P.C. 9443, 9512
 & 9527 UNTIL THEY ARE ACCEPTED

NOTICE: SPECIFIED BEFORE CONSTRUCTION OF A COUNTY
 SANITATION DISTRICT SEWER AND PRIOR TO FINAL ACCEPTANCE
 OF THE PROJECT SANITATION DISTRICT INSPECTOR SHALL BE
 NOTIFIED BY PHONE 962-8600, SO THAT REQUIRED INSPECTION
 CAN BE MADE.

NO CONNECTION FOR THE DISCHARGE OF INDUSTRIAL WASTES
 SHALL BE MADE TO SEWERS SHOWN ON THESE DRAWINGS UNTIL
 A PERMIT FOR INDUSTRIAL WASTE WATER DISCHARGE HAS BEEN
 ISSUED BY THE SANITATION DISTRICTS AND SAID CONNECTION.



BC 202 29
 20802
 ON TRACT

