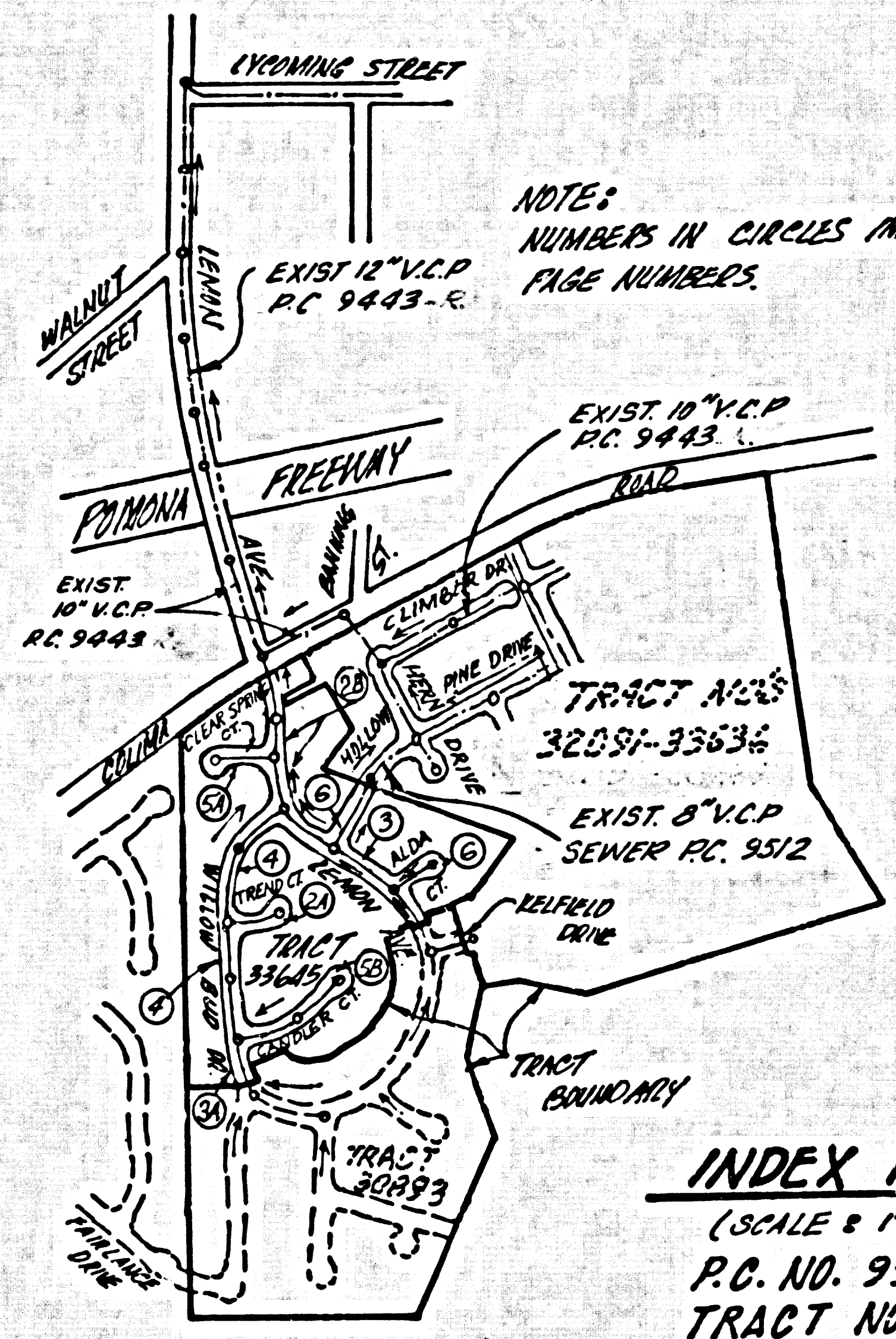


TO BE CONSTRUCTED IN
TRACT NO. 33645
PRIVATE CONTRACT NO. 9527

W.S. 39-B-3
 3 SHEETS, 6 PAGES
 SCALE: VERT. 1"=6' HORIZ. 1"=40' JANUARY, 1978
 PREPARED IN THE OFFICES OF
TOURS CORPORATION
 972 TOWN & COUNTRY ROAD, ORANGE, CALIF. 92668
 BY: *James W. Stewart*
 REG. C. E. No. 25207

47293

B.M. 80 2065 ELEV. 568.791
 2+1.5. T&G NO. 3054 IN C.B. 172
 N. FUTURE B.C.P. 42' N & 54' E INT.
 COLIMA ROAD & ARLEY DRIVE.
 OTHER SEEN QUAD. 19 75.



NOTES:
 NUMBERS IN CIRCLES INDICATE
 PAGE NUMBERS.

INDEX MAP
 (SCALE 1"=600')
P.C. NO. 9527
TRACT NO. 33645

ISSUE NO PERMITS FOR PORTIONS
 OUTLETING THRU P.C. 9443 AND
 9512 UNTIL THEY ARE ACCEPTED

SPECIAL NOTE
 THE 30" GAS LINE SHOWN HEREON IS A HIGH
 PRESSURE LINE. THE CONTRACTOR IS TO USE
 EXTREME CAUTION DURING CONSTRUCTION
 AND SHALL VERIFY ALL LOCATIONS AND
 ELEVATIONS BY HAND EXCAVATIONS PRIOR
 TO CONSTRUCTION. THE CONTRACTOR SHALL
 GIVE NOTICE TO SOUTHERN CALIF. GAS CO.
 IN AREA 714-589-8889 AT LEAST 48 HOURS
 BEFORE STARTING WORK IN THE VICINITY
 OF THE 30" GAS LINE.

NO CONNECTION FOR THE DISPOSAL OF INDUSTRIAL WASTES
 SHALL BE MADE TO SEWERS SHOWN ON THESE DRAWINGS UNTIL
 A PERMIT FOR INDUSTRIAL WASTE WATER DISCHARGE HAS BEEN
 ISSUED BY THE SANITATION DISTRICTS FOR SAID CONNECTION.

BEFORE BREAKING INTO OR CONSTRUCTION ON A COUNTY
 SANITATION DISTRICT SEWER AND PRIOR TO FINAL ACCEPTANCE
 OF THE PROJECT SANITATION DISTRICT INSPECTOR SHALL BE
 NOTIFIED BY PHONE 962-3655, SO THAT REQUIRED INSPECTION
 CAN BE MADE.

- DOUBLE SCALE**
GENERAL NOTES:
- ELEVATIONS ARE IN FEET ABOVE U.S.C. & G.S. SEA LEVEL DATUM OF 1929.
 - NO REVISIONS SHALL BE MADE IN THESE PLANS WITHOUT THE APPROVAL OF THE COUNTY ENGINEER.
 - NO REPRESENTATIVE OF THE COUNTY ENGINEER WILL SURVEY OR LAY OUT ANY PORTION OF THE WORK.
 - GRADE TO WHICH THIS IMPROVEMENT IS TO BE CONSTRUCTED ARE SHOWN ON PLANS AND PROFILES. GRADE POINTS FOR TOP OF CURBS, CENTER LINE OF STREETS, OR CENTER LINE OF ALLEYS ARE SHOWN BY CIRCLES AT POINTS BETWEEN DESIGNATED POINTS THE GRADE SHALL BE ESTABLISHED SO AS TO CONFORM TO A STRAIGHT LINE DRAWN BETWEEN SAID DESIGNATED POINTS.
 - THE PRIVATE ENGINEER SHALL FURNISH THE COUNTY ENGINEER WITH GRADE SHEETS AND STATIONING FOR ALL HOUSE LATERALS AND "T" OR "Y" BRANCHES AND SHALL PROVIDE STAKES FOR THEM AT THESE PROPER LOCATIONS WITH STATIONING PLAINLY MARKED. ALL HOUSE LATERALS SHALL BE CONSTRUCTED IN A STRAIGHT ALIGNMENT AT RIGHT ANGLES FROM THE MAIN LINE SEWER EXCEPT AS SHOWN ON THE PLANS. HOUSE LATERALS FROM CHIMNEYS SHALL NOT HAVE AN ANGLE OF LESS THAN 45° WITH THE MAIN LINE SEWER. ANY CHANGE IN ALIGNMENT SHALL BE REQUESTED IN WRITING BY THE PRIVATE ENGINEER.
 - THE PRIVATE ENGINEER SHALL FURNISH THE HOUSE LATERAL DEPTH AT THE PROPERTY LINE BELOW THE TOP OF CURB ELEVATION FOR EACH HOUSE LATERAL ON THE GRADE SHEET.
 - BEFORE WORK CAN BE STARTED, THE CONTRACTOR MUST OBTAIN A PERMIT TO EXCAVATE IN COUNTY STREETS FROM THE L.A. COUNTY ROAD DEPT., DISTRICT OFFICE NO. 1, AND PAY A FEE TO THE COUNTY ENGINEER, 201 E. BONITA AVE., SAN DIMAS REGIONAL OFFICE TO COVER THE COST OF CONSTRUCTION INSPECTION AND RECORD PLANS.
 - IF WORK IS TO BE DONE IN A STATE HIGHWAY, A PERMIT MUST BE OBTAINED FROM THE STATE OF CALIFORNIA, DIVISION OF HIGHWAYS, 130 SOUTH SPRING STREET, LOS ANGELES, CALIFORNIA.
 - APPROVAL OF THIS PLAN BY THE COUNTY OF LOS ANGELES DOES NOT CONSTITUTE A REPRESENTATION AS TO THE ACCURACY OF THE LOCATION OF OR THE EXISTENCE OR NON-EXISTENCE OF ANY UNDERGROUND UTILITY PIPE, OR STRUCTURE WITHIN THE LIMITS OF THIS PROJECT. THIS NOTE APPLIES TO ALL PAGES.
 - REFER TO SECTION 7-10.4.3 OF THE STANDARD SPECIFICATIONS, REGARDING SAFETY ORDERS.
 - PRIOR TO ISSUANCE OF THE REQUIRED SEWER CONSTRUCTION PERMIT BY THE COUNTY ENGINEER THE CONTRACTOR SHALL OBTAIN A PERMIT TO EXCAVATE FROM THE STATE OF CALIFORNIA, DEPARTMENT OF INDUSTRIAL RELATIONS, DIVISION OF INDUSTRIAL SAFETY, AND SHALL FILE A CERTIFICATE OF WORKERS COMPENSATION INSURANCE WITH THE COUNTY ENGINEER.

- CONSTRUCTION NOTES:**
- WORK SHALL BE CONSTRUCTED ACCORDING TO THE STANDARD SPECIFICATIONS FOR PUBLIC WORKS CONSTRUCTION (1976 EDITION) AND COUNTY ENGINEER SPECIAL PROVISIONS FOR THE CONSTRUCTION OF SANITARY SEWERS DATED SEPTEMBER 21, 1976 AND SHALL BE PROSECUTED ONLY IN THE PRESENCE OF THE COUNTY ENGINEER.
 - THE CONTRACTOR SHALL NOTIFY THE ENVIRONMENTAL DEVELOPMENT DIVISION (215) 574-7239 AT LEAST TWENTY FOUR HOURS BEFORE STARTING ANY WORK UNDER THIS CONTRACT.
 - HOUSE LATERALS TO BE CONSTRUCTED WITH INVERTS AT PROPERTY LINE 4 FEET BELOW CURB GRADE EXCEPT AS NOTED.
 - WYE OR TEE BRANCHES MAY BE USED FOR CONNECTIONS TO MANHOLE SEWERS EXCEPT AS NOTED.
 - ALL STRUCTURES SHALL BE EITHER BRICK MANHOLES PER 8-36 OR PERCENT CONCRETE MANHOLES PER 8-36, EXCEPT AS NOTED.
 - PROPER STAKES ON THE PROPERTY LINE OR PROPERTY LINES PRODUCED AT RIGHT ANGLES TO THE SEWER LINE AT THE CENTER LINE OF EACH MANHOLE.
 - MANHOLE TOPS IN UNIMPROVED RIGHTS OF WAY TO BE SIX INCHES ABOVE FINISHED GRADE.
 - VITRIFIED CLAY PIPE JOINTS SHALL BE TYPE "B", "P", OR "D" PER STANDARD SPECIFICATIONS SECTION 308-2.
 - IF A POWER POLE IS WITHIN THREE FEET OF THE SEWER, THE SEWER SHALL BE ENCASED, PER 8-32, CASE II, TWO FEET ON EACH SIDE FROM THE POINT OF INTERFERENCE.
 - IF DURING THE COURSE OF CONSTRUCTION IT IS DETERMINED THAT THERE IS LESS THAN FOUR FEET OF COVER OVER THE TOP OF A MAIN LINE OR HOUSE LATERAL V.C.P. SEWER WHICH IS NOT INDICATED ON THE PLANS, THE PIPE SHALL BE ENCASED PER 8-32, CASE II UNLESS OTHERWISE APPROVED BY THE COUNTY ENGINEER.
 - ALL JOINTS BETWEEN CLAY PIPE AND VITRIFIED CLAY PIPE SHALL BE MADE WITH A RUBBER SLAVE JOINT, TYPE "C" OR "D", WITH BEARING IF NECESSARY PER STANDARD SPECIFICATIONS, SECTION 308-2.
 - SEWERS TO BE TESTED FOR LEAKAGE PER SECTION 306-1-8 OF THE STANDARD SPECIFICATIONS AND SPECIAL PROVISIONS.
 - REPAIRS ALL TRENCHES WITHIN PAVED AREAS TO MEET L.A. COUNTY ROAD DEPT. OR CALIFORNIA STATE HIGHWAY REQUIREMENTS IN ACCORDANCE WITH PERMITS.
 - FULL COMPLIANCE WITH SECTION 306-13.5 OF THE SPECIAL PROVISIONS WILL BE REQUIRED FOR BACKFILL IN STREETS. CERTIFICATION OF BACKFILL COMPACTION AND SAND EQUIVALENTS BY A QUALIFIED, REGISTERED TESTING LABORATORY SHALL BE PROVIDED BY THE PERMITEE PRIOR TO THE ISSUANCE OF A CERTIFICATE OF PARTIAL ACCEPTANCE.

THE FOLLOWING LATEST REVISED STANDARD PLANS ON FILE IN THE OFFICE OF THE COUNTY ENGINEER SHALL APPLY IN THE CONSTRUCTION OF THIS PROJECT.

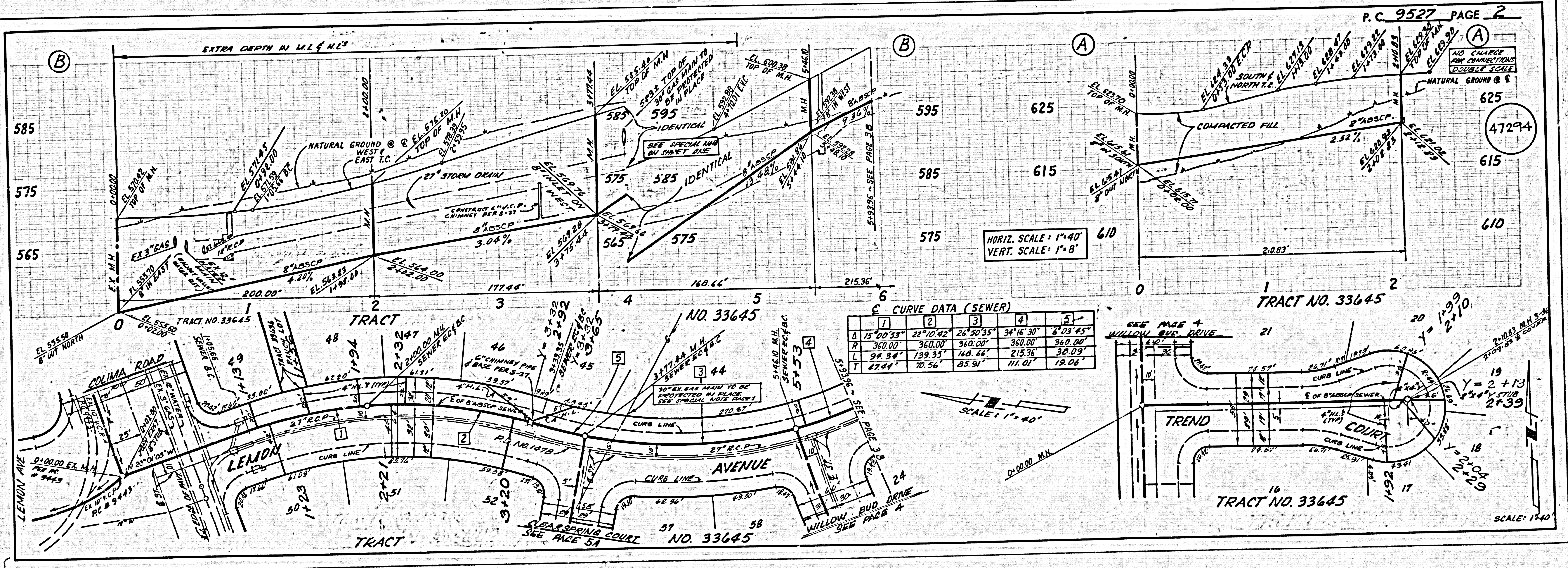
LEGEND 8-1
 MINIMUM PUBLIC SAFETY REQUIREMENTS 8-2
 BRICK MANHOLE 8-7
 STANDARD MANHOLE STEP 8-8
 HOODING FOR SEWER PIPE 8-31
 CASING AND ENCASEMENT 8-32
 WYE OR TEE SUPPORT 8-33
 ALLOWABLE TRENCH WIDTHS 8-34
 LOCKING MANHOLE FRAMES AND COVER 8-35
 NON-REINFORCED PRECAST CONCRETE MANHOLE 8-36
 CHIMNEY PIPE AND BASE 8-37

COUNTY OF LOS ANGELES, CALIFORNIA
 COUNTY ENGINEER JOHN D. PARKHURST, CHIEF ENGINEER
 STEPHEN J. KRONCE COUNTY ENGINEER JOHN D. PARKHURST, CHIEF ENGINEER

APPROVED *James W. Stewart* 1-3-78 APPROVED *Frank D. Das* 1-4-78
 SAN DIMAS REGIONAL ENGINEER OFFICE ENGINEER

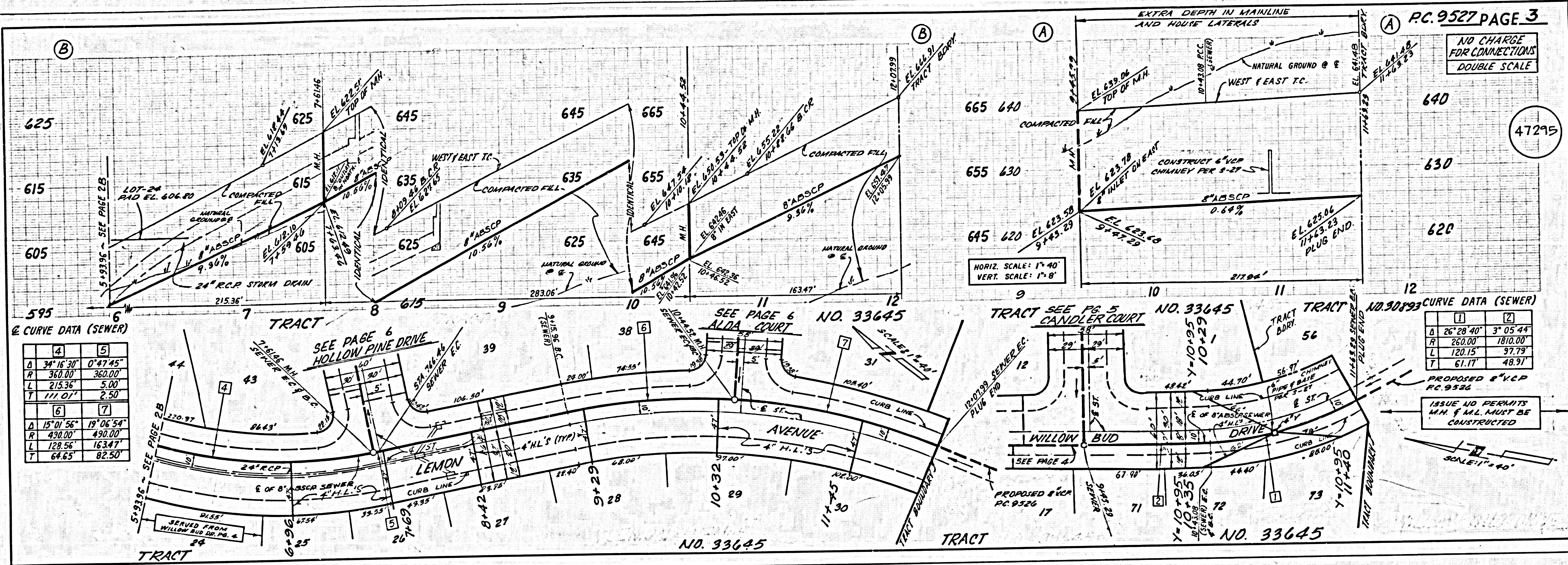
CHECKED *James W. Stewart* 1-3-78
 DATE

NO. C.E. NO. 10653
 LA 2412 BLDG. DIST. 80 I.N. 025202



CURVE DATA (SEWER)

[1]	[2]	[3]	[4]	[5]
Δ 15°00'53"	22°10'42"	24°50'35"	34°16'30"	8°03'45"
R 360.00'	360.00'	340.00'	360.00'	340.00'
L 94.34'	139.35'	148.44'	215.36'	32.09'
T 47.44'	70.56'	85.91'	111.01'	19.06'



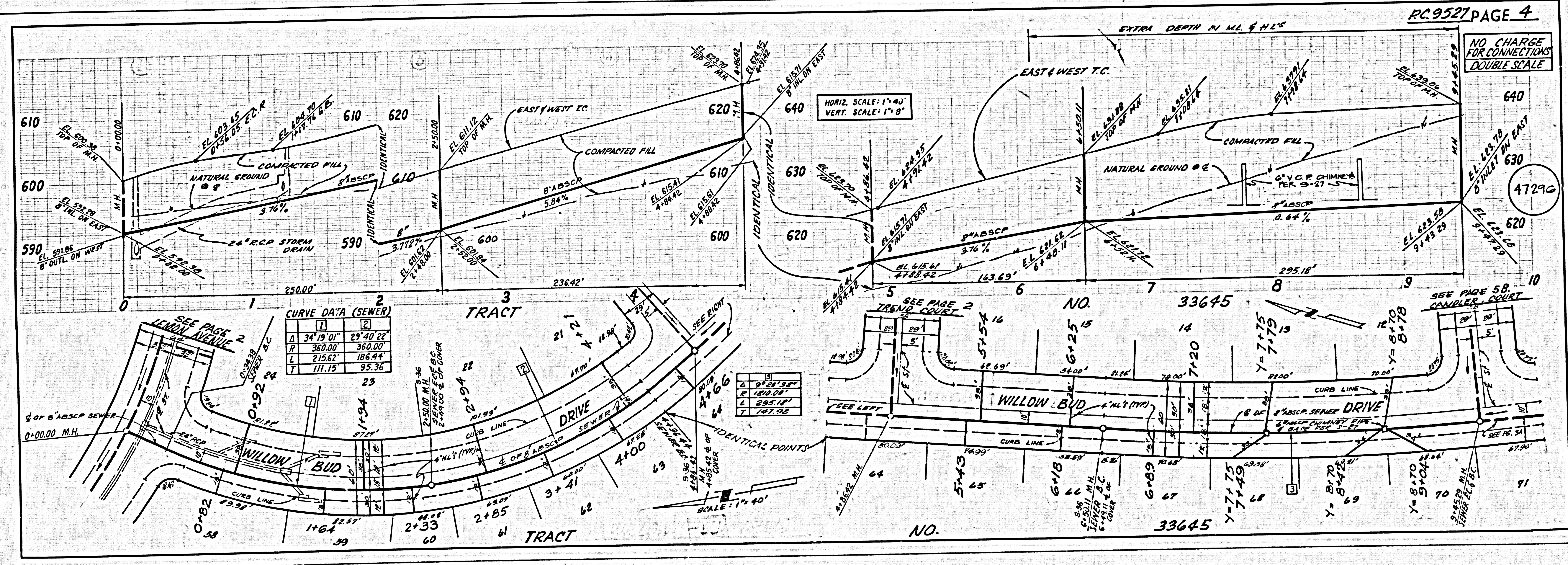
② CURVE DATA (SEWER)

Δ	4	5
R	360.00	360.00
L	215.36	5.00
T	171.07	2.50

Δ	6	7
R	430.00	430.00
L	128.56	16.347
T	64.65	82.50

③ CURVE DATA (SEWER)

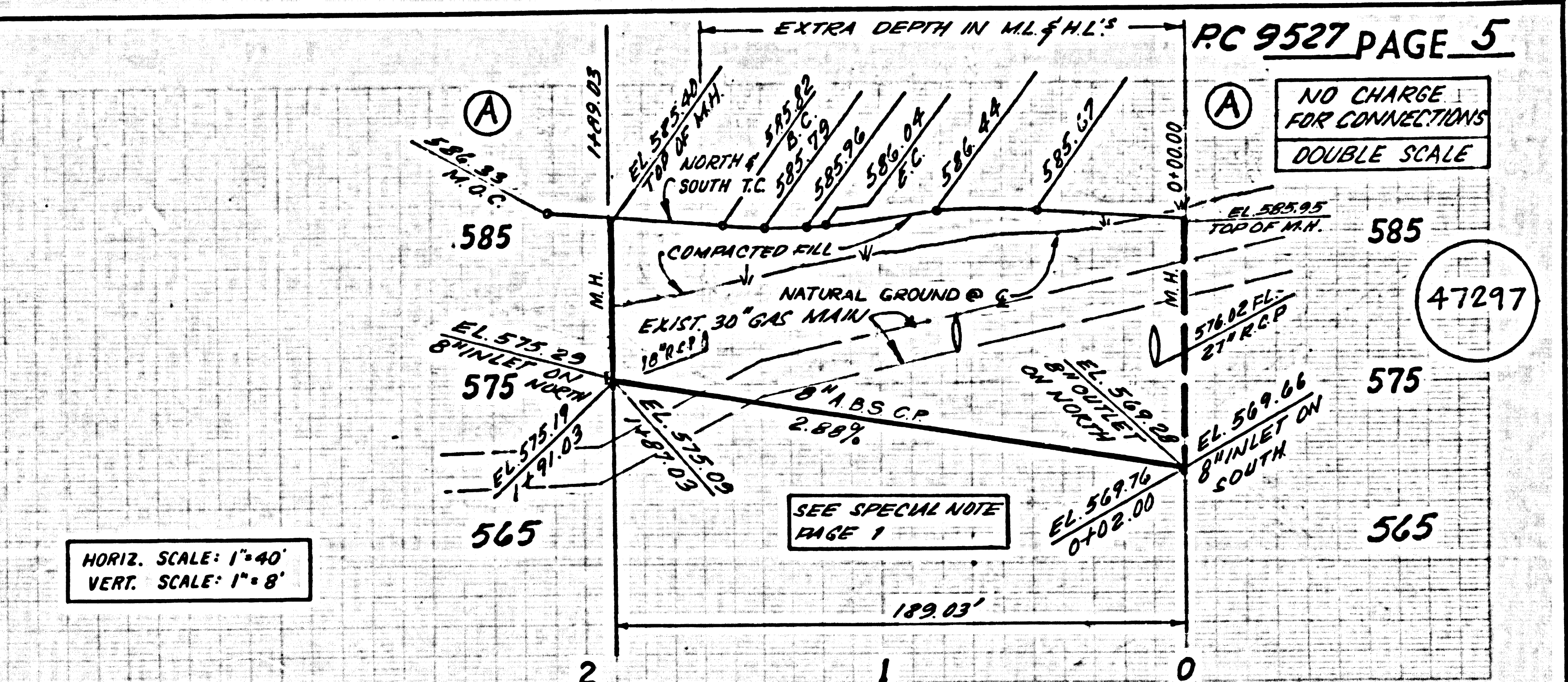
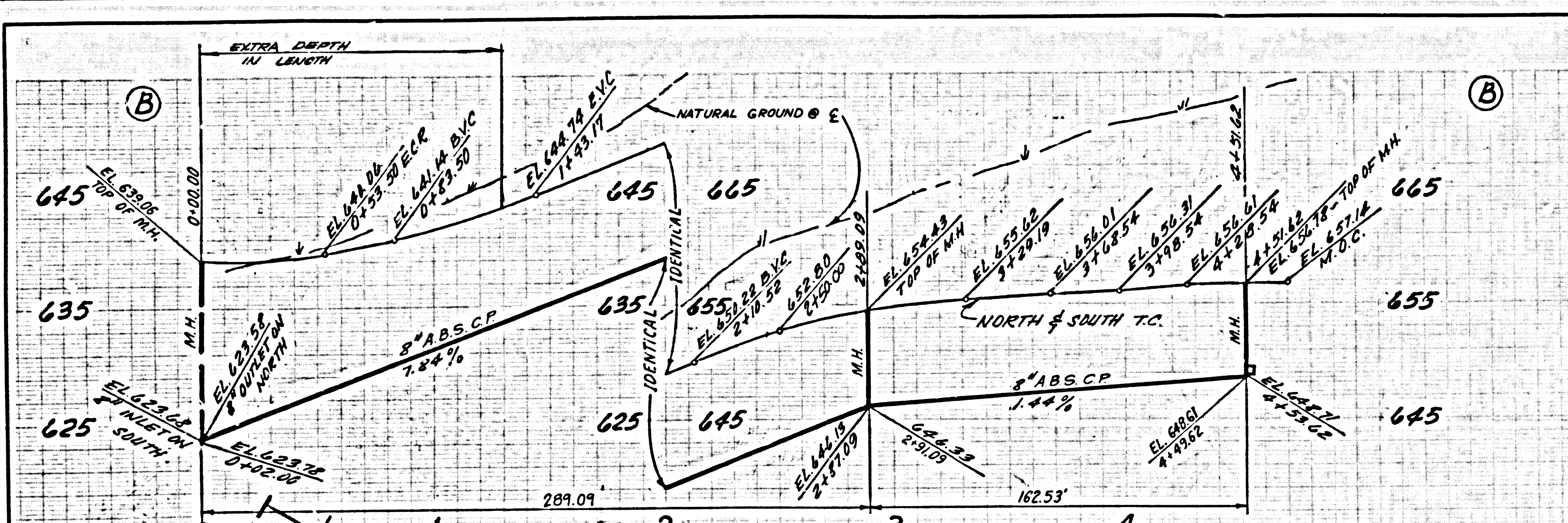
Δ	1	2
R	260.00	180.00
L	120.15	37.79
T	61.17	48.91



④ CURVE DATA (SEWER)

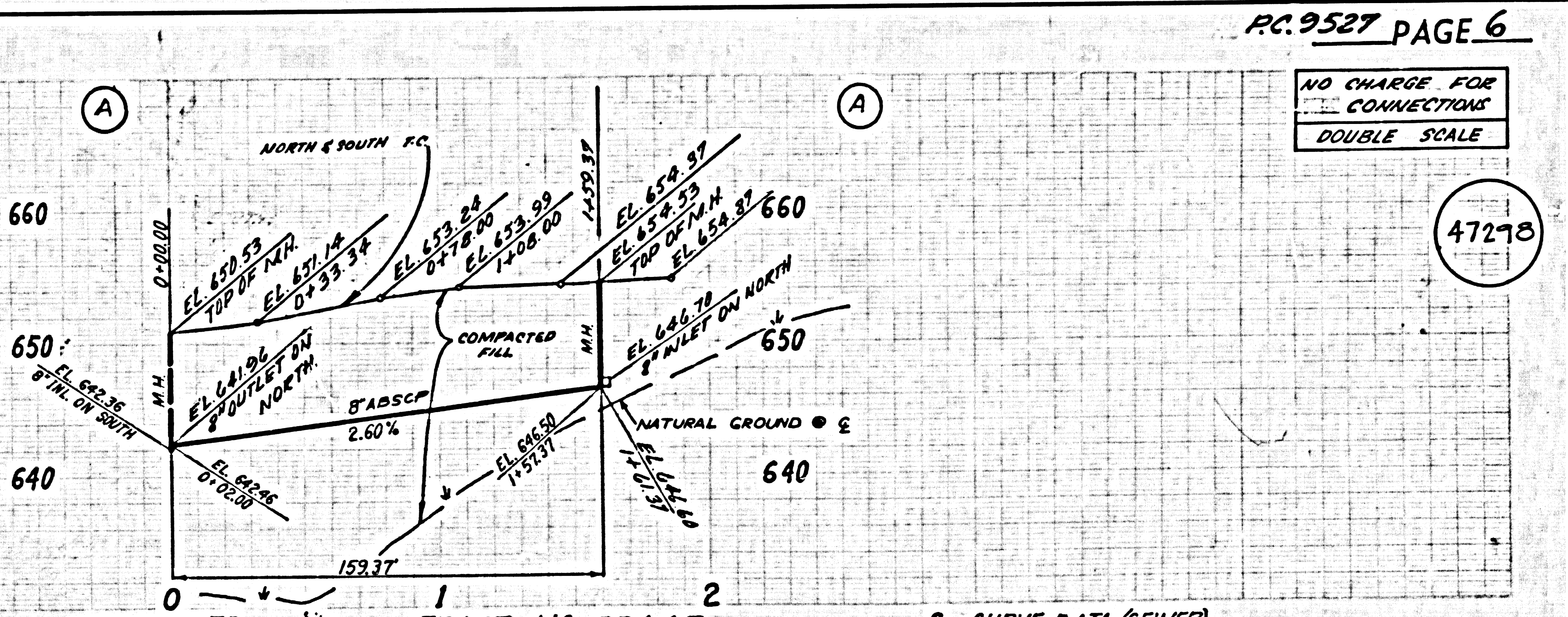
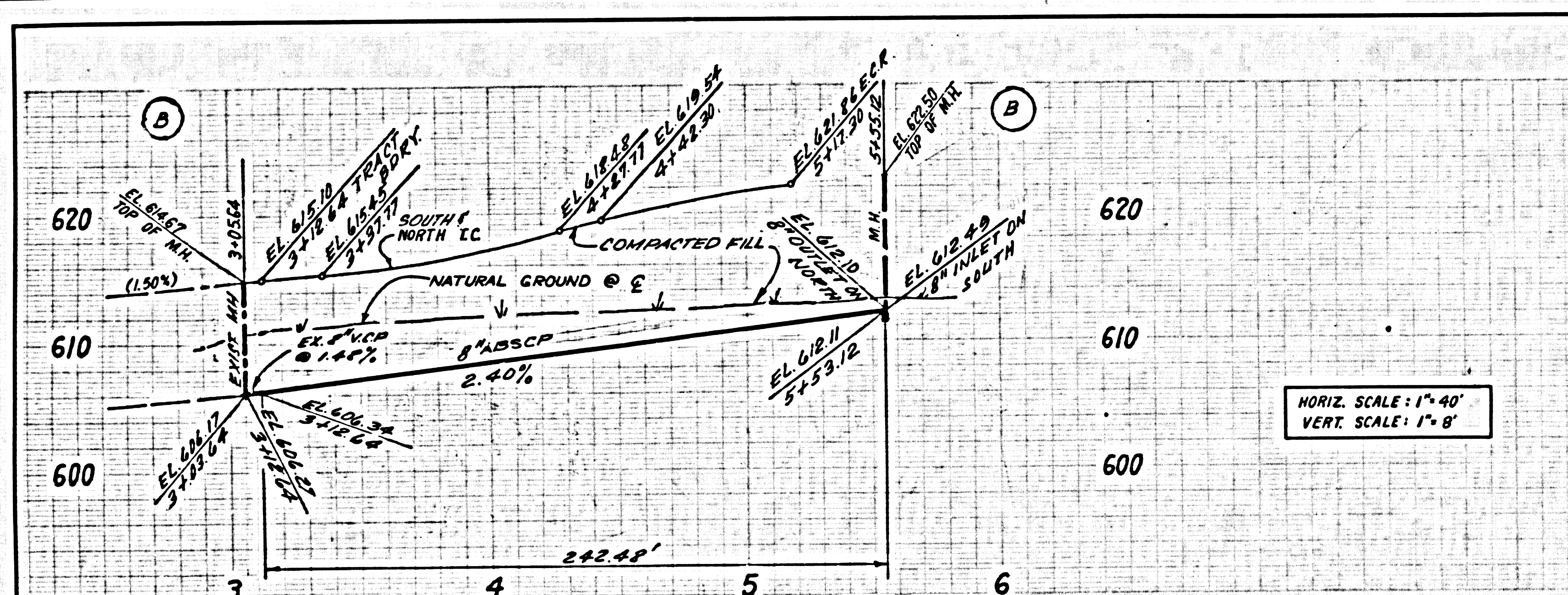
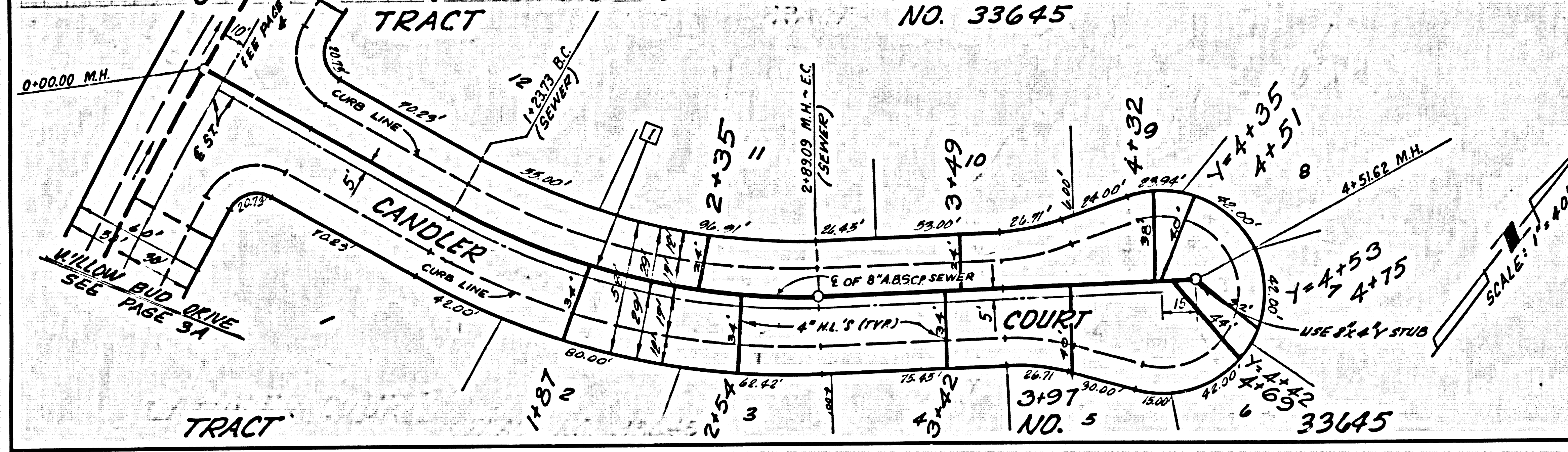
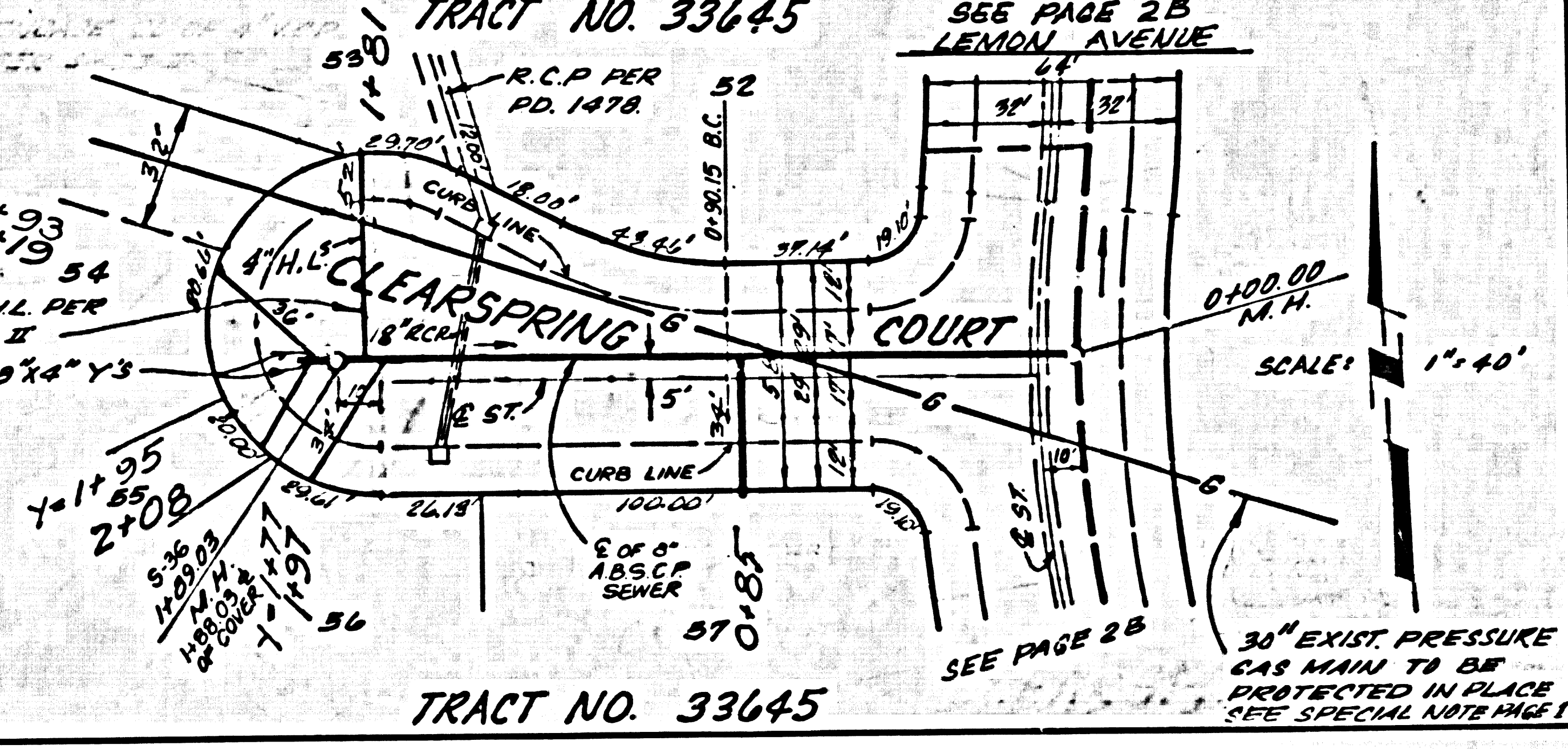
Δ	1	2
R	360.00	360.00
L	215.62	186.44
T	111.15	95.36

Δ	9° 21' 38"
R	180.00
L	295.18
T	147.92



SEWER CURVE DATA

Δ	32°07'03"
R	235.00'
L	165.36'
T	84.92'



SEWER CURVE DATA

Δ	21°12'19"
R	276.52'
L	102.34'
T	51.76'

