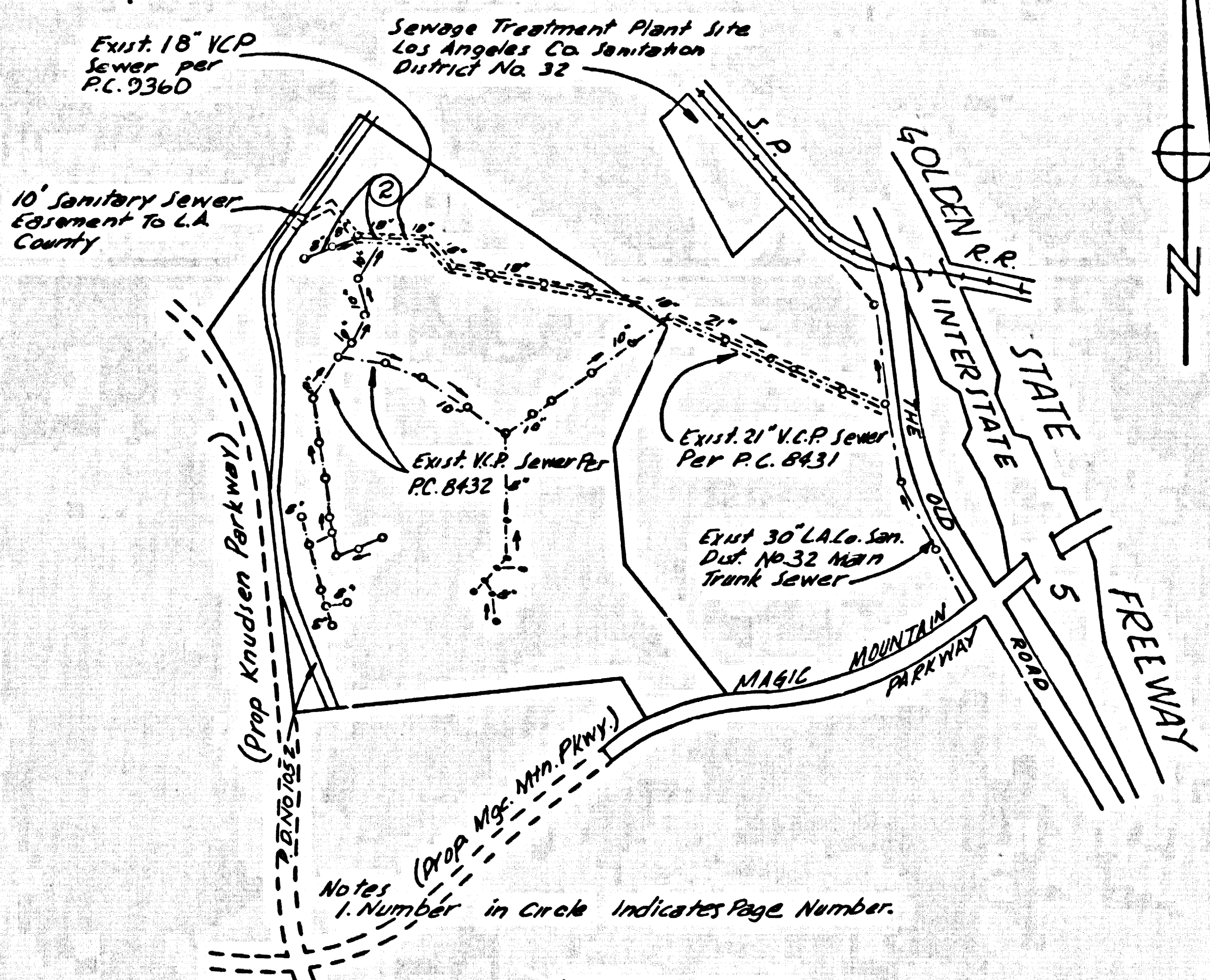


B.M. B.L. #1774 ELEV. 1078.072
 Road B.M. 189 - So. Curb of Traffic
 Island 15' N. of E. To Roadway of
 Magic Mtn. Pkwy. E. To W. of Golden Gate Fwy.
 Bridge (B 53 1625)
 NEWHALL QUAD. 19.65



INDEX MAP
 Scale: 1"=1000'
 P.C. 9530
 (FOR PRIVATE SEWER)

15. Contractor Shall Replace in Kind All Conduit, Lights, Walls, Stairs, Sidewalks, Irrigation Lines, Valves, Fences, Electrical Facilities, Except Landscaping, That Are Removed or Damaged. Magic Mountain Personnel Will Remove and Replace All Landscaping Such As Bushes, Trees, and Shrubs; The Contractor Shall Reconstruct Fences, Barbed Wire, Magic Mountain.
16. All Trench Backfill To Comply With Standard Spec. 306-1.3.6. Except As Noted.
17. Backfill May Be Jetted or Mechanically Compacted in Accordance With Section 306-1.3 of the Standard Specifications.
18. The Contractor Shall Assume Sole and Complete Responsibility For Job Site Conditions During the Course of Construction of This Project, Including Safety of All Persons, and Property, and This Requirement Shall Apply Continuously and Not Be Limited to Normal Working Hours.
19. Assumes No Responsibility to Provide Design and Construction Review Services Relating to the Contractors Safety Precautions, or to Means, Techniques, Sequences or Procedures Required For the Contractor to Perform His Work.
20. The Location and Existence of or Also Existence of Underground Utilities Has Been Determined To the Best of the Engineer's Ability But it Shall Be the Sole Responsibility of the Contractor to Determine the Location of Any Existing Utilities, and To Take All Necessary Precautions to Avoid Damage to These Utilities. The Contractor Shall Assume Sole Responsibility For Any Damage Done to Existing Utilities During Construction.
21. Special Backfill in Designated Areas. All Backfill and Earth Replaced Shall Be Compacted To a Minimum of 90% of Maximum Density Per A.S.T.M. Standard Method of Test D698-57T As Modified, Acceptable Certification of Such Compaction Shall Be Submitted To the Design Division.

NO CONNECTION FOR THE DISPOSAL OF INDUSTRIAL WASTES SHALL BE MADE TO SEWERS SHOWN ON THESE DRAWINGS UNTIL A PERMIT FOR INDUSTRIAL WASTE WATER DISCHARGE HAS BEEN ISSUED BY THE SANITATION DISTRICTS FOR SAID CONNECTION.

BEFORE BREAKING INTO OR CONSTRUCTION ON A COUNTY SANITATION DISTRICT SEWER AND PRIOR TO FINAL ACCEPTANCE OF THE PROJECT SANITATION DISTRICT INSPECTOR SHALL BE NOTIFIED BY PHONE 362-8605. SO THAT REQUIRED INSPECTION CAN BE MADE.

GENERAL NOTES:

1. ELEVATIONS ARE IN FEET ABOVE U.S.C. & G.S. SEA LEVEL DATUM OF 1929.
2. NO REVISIONS SHALL BE MADE IN THESE PLANS WITHOUT THE APPROVAL OF THE COUNTY ENGINEER.
3. NO REPRESENTATIVE OF THE COUNTY ENGINEER WILL SURVEY OR LAY OUT ANY PORTION OF THE WORK.
4. GRADES TO WHICH THIS MOVEMENT IS TO BE CONSTRUCTED ARE SHOWN ON PLANS AND PROFILES. GRADE POINTS FOR TOP OF CURBS, CENTER LINE OF STREETS, OR CENTER LINE OF ALLEYS ARE SHOWN BY CIRCLES ON PROFILES. AT ALL POINTS BETWEEN DESIGNATED POINTS THE GRADE SHALL BE ESTABLISHED SO AS TO CONFORM TO A STRAIGHT LINE DRAWN BETWEEN SAID DESIGNATED POINTS.
5. THE PRIVATE ENGINEER SHALL FURNISH THE COUNTY ENGINEER WITH GRADE SHEETS AND STATIONING FOR ALL HOUSE LATERALS AND "T" OR "Y" BRANCHES AND SHALL PROVIDE STAKES FOR THEM AT THEIR PROPER LOCATIONS WITH STATIONING PLAINLY MARKED. ALL HOUSE LATERALS SHALL BE CONSTRUCTED IN A STRAIGHT ALIGNMENT AT RIGHT ANGLES FROM THE MAIN LINE SEWER EXCEPT AS SHOWN ON THE PLANS. HOUSE LATERALS FROM CHIMNEYS SHALL NOT HAVE AN ANGLE OF LESS THAN 45° WITH THE MAIN LINE SEWER. ANY CHANGE IN ALIGNMENT SHALL BE REQUESTED BY THE PRIVATE ENGINEER.
6. THE PRIVATE ENGINEER SHALL FURNISH THE HOUSE LATERAL DEPTH AT THE PROPERTY LINE BELOW THE TOP OF CURB ELEVATION FOR EACH HOUSE LATERAL ON THE GRADE SHEET.
7. BEFORE WORK CAN BE STARTED, THE CONTRACTOR MUST OBTAIN A PERMIT TO EXCAVATE IN COUNTY STREETS FROM THE L.A. COUNTY ROAD DEPT., DISTRICT OFFICE NO. 4, AND PAY A FEE TO THE COUNTY ENGINEER, SANTA CLARITA VALLEY REGIONAL OFFICE, TO COVER THE COST OF CONSTRUCTION INSPECTION AND RECORD PLANS.
8. IF WORK IS TO BE DONE ON A STATE HIGHWAY, A PERMIT MUST BE OBTAINED FROM THE STATE OF CALIFORNIA, DIVISION OF HIGHWAYS, 120 SOUTH SPRING STREET, LOS ANGELES, CALIFORNIA.
9. APPROVAL OF THIS PLAN BY THE COUNTY OF LOS ANGELES DOES NOT CONSTITUTE A REPRESENTATION AS TO THE ACCURACY OF THE LOCATION OF OR THE EXISTENCE OR NON-EXISTENCE OF ANY UNDERGROUND UTILITY PIPE, OR STRUCTURE WITHIN THE LIMITS OF THIS PROJECT. THIS NOTE APPLIES TO ALL PAGES.
10. REFER TO SECTION 714.03 OF THE STANDARD SPECIFICATIONS, REGARDING SAFETY ORDERS.
11. PRIOR TO ISSUANCE OF THE REQUIRED SEWER CONSTRUCTION PERMIT BY THE COUNTY ENGINEER, THE CONTRACTOR SHALL OBTAIN A PERMIT TO EXCAVATE FROM THE STATE OF CALIFORNIA, DIVISION OF INDUSTRIAL SAFETY.
12. PRIOR TO ISSUANCE OF THE REQUIRED SEWER CONSTRUCTION PERMIT BY THE COUNTY ENGINEER, THE CONTRACTOR SHALL OBTAIN A CERTIFICATE OF WORKERS COMPENSATION INSURANCE LISTING THE LOS ANGELES COUNTY ENGINEER, 8325 WEST VALENCIA BOULEVARD, VALENCIA, CALIFORNIA 91355 AS THE CERTIFICATE HOLDER.

CONSTRUCTION NOTES:

1. WORK SHALL BE CONSTRUCTED ACCORDING TO THE STANDARD SPECIFICATIONS FOR PUBLIC WORKS CONSTRUCTION (1974 EDITION) WITH 1977 SUPPLEMENTS AND COUNTY ENGINEER SPECIAL PROVISIONS FOR THE CONSTRUCTION OF SANITARY SEWERS DATED 10/21/76 AND SHALL BE PROSECUTED ONLY IN THE PRESENCE OF THE COUNTY ENGINEER.
2. THE CONTRACTOR SHALL NOTIFY THE APPROVED DESIGNER, CIVIL ENGINEER, BY TELEPHONE, (818) 994-7283, AT LEAST TWENTY-FOUR HOURS BEFORE STARTING ANY WORK UNDER THIS CONTRACT.
3. HOUSE LATERALS TO BE CONSTRUCTED WITH "Y" FITS AT PROPERTY LINE 4 FEET BELOW CURB GRADE EXCEPT AS NOTED.
4. WYE OR TEE BRANCHES MAY BE USED FOR CONNECTIONS TO MAINLINE SEWERS EXCEPT AS NOTED.
5. ALL STRUCTURES SHALL BE EITHER BRICK MANHOLES PER S-3 OR PRECAST CONCRETE MANHOLES PER S-36, EXCEPT AS NOTED.
6. PROVIDE STAKES ON THE PROPERTY LINE OR PROPERTY LINES PRODUCED AT RIGHT ANGLES TO THE SEWER LINE AT THE CENTER LINE OF EACH MANHOLE.
7. MANHOLES TOPS IN UNIMPROVED RIGHTS OF WAY TO BE SIX INCHES ABOVE FINISHED GRADE.
8. VITRIFIED CLAY PIPE JOINTS SHALL BE TYPE "T", "P", OR "C" PER STANDARD SPECIFICATIONS SECTION 300-3.
9. IF A POWER POLE IS WITHIN THREE FEET OF THE SEWER, THE SEWER SHALL BE ENCASED, PER S-22, CASE II, TWO FEET ON EACH SIDE FROM THE POINT OF INTERFERENCE.
10. IF DURING THE COURSE OF CONSTRUCTION IT IS DETERMINED THAT THERE IS LESS THAN FOUR FEET OF COVER OVER THE TOP OF A MAIN LINE OR HOUSE LATERAL V.C.P. SEWER WHICH IS NOT INDICATED ON THE PLANS, THE PIPE SHALL BE ENCASED PER S-22, CASE II, UNLESS OTHERWISE APPROVED BY THE COUNTY ENGINEER.
11. ALL JOINTS BETWEEN CAST IRON PIPE AND VITRIFIED CLAY PIPE SHALL BE MADE WITH A RUBBER SLEEVE JOINT, TYPE "C" OR "B", (WITH BURNING IF NECESSARY) PER STANDARD SPECIFICATIONS, SECTION 300-3.
12. SEWERS TO BE TESTED FOR LEAKAGE PER SECTION 300-1.8 OF THE STANDARD SPECIFICATIONS AND SPECIAL PROVISIONS.
13. REPAIR ALL TRENCHES WITHIN PAVED AREAS TO MEET L.A. COUNTY ROAD DEPT. OR CALIFORNIA STATE HIGHWAY REQUIREMENTS IN ACCORDANCE WITH PERMITS.
14. FULL COMPLIANCE WITH SECTION 306-1.3.6 OF THE SPECIAL PROVISIONS WILL BE REQUIRED FOR BACKFILL IN STREETS. CERTIFICATION OF BACKFILL COMPACTION AND SAND EQUIVALENTS BY A QUALIFIED, REGISTERED TESTING LABORATORY SHALL BE PROVIDED BY THE PERMITTEE PRIOR TO THE ISSUANCE OF A CERTIFICATE OF PARTIAL ACCEPTANCE.

TO BE CONSTRUCTED IN
 MAGIC MOUNTAIN PARK
 FOR MAGIC MOUNTAIN WAREHOUSE
 (FOR PRIVATE SEWER)
 PRIVATE CONTRACT NO. 9530
 INDEX 267 S105
 W.S. 63

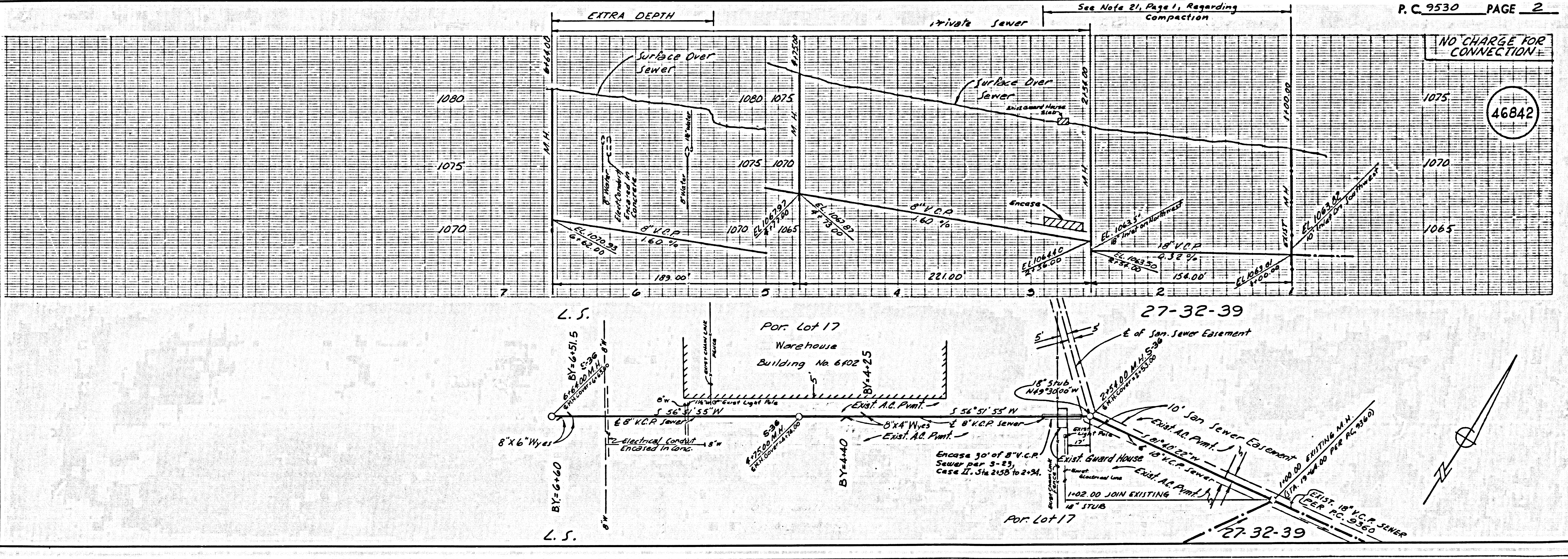
1 SHEETS; 2 PAGES
 SCALE: VERT. 1"=4'
 HORIZ. 1"=40'
 APRIL, 1978
 PREPARED IN THE OFFICES OF
 VAL CON. INC.
 1425 THOUSAND OAKS BLVD.
 THOUSAND OAKS, CALIF. 91320
 REG. C. E. No. 13696

46841

THE FOLLOWING LATEST REVISED STANDARD PLANS ON FILE IN THE OFFICE OF THE COUNTY ENGINEER SHALL APPLY IN THE CONSTRUCTION OF THIS PROJECT.

LEGEND	S-1
MINIMUM PUBLIC SAFETY REQUIREMENTS	S-3
BRICK MANHOLE	S-36
STANDARD MANHOLE STEP	S-17
BEDDING FOR SEWER PIPE	S-21
GRADING AND ENCASEMENT	S-26
WYE OR TEE SUPPORT	S-28
ALLOWABLE TRENCH WIDTHS	S-28
LOCKING MANHOLE FRAME AND COVER	S-28
NON-REINFORCED PRECAST CONCRETE MANHOLE	S-26

COUNTY OF LOS ANGELES, CALIFORNIA
 STEPHEN A. KANAK, COUNTY ENGINEER JOHN D. PARKHURST, CHIEF ENGINEER
 APPROVED: Sam H. Miller 7/18/78 APPROVED: Frank R. ... 7/24/78
 REGIONAL ENGINEER (DATED) OFFICE ENGINEER (DATED)
 CHECKED: Linda H. Martin 7-18-78
 (DATED)
 REG. C.E. NO. 13786
 SANTA CLARITA VALLEY BLDG. DIST. 32 I.N. 0358.01



NO CHARGE FOR CONNECTION
 46842

D-5-1