

TO BE CONSTRUCTED IN

HUMMING BIRD WAY 47162

PRIVATE CONTRACT NO. 9541

THOS. 13, A-4
W.S. 60, B-5

1 SHEET, 2 PAGES

SCALE: VERT. 1"=4'
HORIZ. 1"=40'

MAY 1978
PREPARED IN THE OFFICES OF
VANTAGE ENGINEERING CO.
825 1/2 FALLBROOK AVENUE
CANOGA PARK, CALIF. 91307
BY: Vincent A. Moran
REG. C. E. No. MB15

THE FOLLOWING LATEST REVISED STANDARD PLANS ON FILE IN THE OFFICE OF THE COUNTY ENGINEER SHALL APPLY IN THE CONSTRUCTION OF THIS PROJECT:

| | |
|---|------|
| LEGEND | 5-1 |
| MINIMUM PUBLIC SAFETY REQUIREMENTS | 5-2 |
| SMALL MANHOLE | 5-3 |
| STANDARD MANHOLE STEP | 5-7 |
| BRIDGING FOR SEWER PIPE | 5-21 |
| CRADLING AND INCASEMENT | 5-22 |
| WYE OR TEE SUPPORT | 5-23 |
| ALLOWABLE TRENCH WIDTHS | 5-24 |
| LOCKING MANHOLE FRAME AND COVER | 5-25 |
| NON-REINFORCED PRECAST CONCRETE MANHOLE | 5-26 |

COUNTY OF LOS ANGELES, CALIFORNIA

STEPHEN J. KOONCE, COUNTY ENGINEER LAS VIRGENES MUNICIPAL WATER DISTRICT

APPROVED: *John W. Keigel* 4-4-79 APPROVED: *W. H. Stokes* 5/2/79
GENERAL MANAGER

CHECKED: *Ralph David Siant* 4/4/79
DATE

REC. NO. 16883

CALABASAS BLDG. DIST. 91

I. N. 2538.13

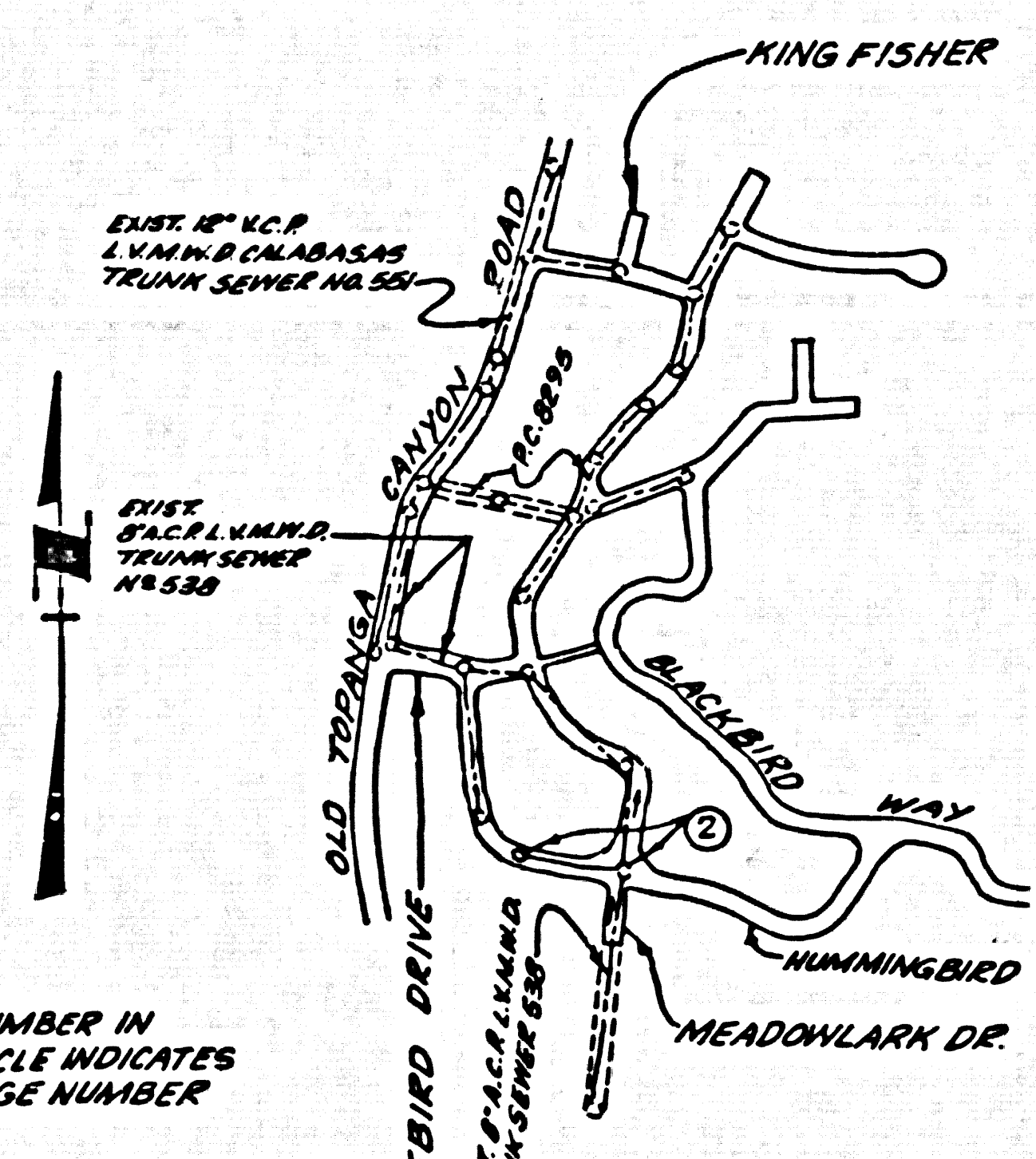
GENERAL NOTES:

- ELEVATIONS ARE IN FEET ABOVE U.S.C. & G.S. SEA LEVEL DATUM OF 1929.
- NO REVISIONS SHALL BE MADE IN THESE PLANS WITHOUT THE APPROVAL OF THE COUNTY ENGINEER.
- NO REVISIONS SHALL BE MADE IN THESE PLANS WITHOUT THE APPROVAL OF THE COUNTY ENGINEER.
- GRADES TO WHICH THIS IMPROVEMENT IS TO BE CONSTRUCTED ARE SHOWN ON PLANS AND PROFILES. GRADE POINTS FOR TOP OF CURBS, CENTER LINE OF STREETS, OR CENTER LINE OF ALLEYS ARE SHOWN BY CIRCLES ON PROFILES. AT ALL POINTS BETWEEN DESIGNATED POINTS THE GRADE SHALL BE ESTABLISHED SO AS TO CONFORM TO A STRAIGHT LINE BETWEEN SAID DESIGNATED POINTS.
- THE PRIVATE ENGINEER SHALL FURNISH THE COUNTY ENGINEER WITH GRADE SHEETS AND STATIONING FOR ALL HOUSE LATERALS AND "T" OR "Y" BRANCHES AND SHALL PROVIDE STAKES FOR THEM AT THESE PROPER LOCATIONS WITH STATIONING MEASUREMENTS. ALL HOUSE LATERALS SHALL BE CONSTRUCTED AT A RIGHT ANGLE TO THE MAIN LINE SEWER EXCEPT AS SHOWN ON THE PLANS. HOUSE LATERALS FROM CHIMNEYS SHALL NOT HAVE AN ANGLE OF LESS THAN 45° WITH THE MAIN LINE SEWER. ANY CHANGE IN ALIGNMENT SHALL BE REQUESTED IN WRITING BY THE PRIVATE ENGINEER.
- THE PRIVATE ENGINEER SHALL FURNISH THE HOUSE LATERAL DEPTH AT THE PROPERTY LINE BELOW THE TOP OF CURB ELEVATION FOR EACH HOUSE LATERAL ON THE GRADE SHEET.
- BEFORE WORK CAN BE STARTED, THE CONTRACTOR MUST OBTAIN A PERMIT TO EXCAVATE IN COUNTY STREETS FROM THE L.A. COUNTY ROAD DEPT., DISTRICT OFFICE NO. 3 AND PAY A FEE TO THE COUNTY ENGINEER, 850 S. VERMONT, LOS ANGELES, CALIF., REGIONAL OFFICE, TO COVER THE COST OF CONSTRUCTION INSPECTION AND RECORD PLANS.
- IF WORK IS TO BE DONE IN A STATE HIGHWAY, A PERMIT MUST BE OBTAINED FROM THE STATE OF CALIFORNIA, DIVISION OF HIGHWAYS, 110 SOUTH SPRING STREET, LOS ANGELES, CALIFORNIA.
- APPROVAL OF THIS PLAN BY THE COUNTY OF LOS ANGELES DOES NOT CONSTITUTE A REPRESENTATION AS TO THE ACCURACY OF THE LOCATION OF OR THE EXISTENCE OR NON-EXISTENCE OF ANY UNDERGROUND UTILITY PIPE OR STRUCTURE WITHIN THE LIMITS OF THIS PROJECT. THIS NOTE APPLIES TO ALL PAGES.
- REFER TO SECTION 7.1.1.1.1 OF THE STANDARD SPECIFICATIONS, REGARDING SAFETY DEVICES.
- THE UNDERGROUND UTILITY COMPANIES WITHIN THE LIMIT OF THIS PROJECT ARE AS FOLLOWS:
1. GAS: SOUTHERN CALIFORNIA GAS CO.
2. ELECTRIC: SOUTHERN CALIFORNIA EDISON CO.
3. WATER: LAS VIRGENES MUNICIPAL WATER DISTRICT
4. TELEPHONE: PACIFIC TELEPHONE CO.
- BEFORE THE BEGINNING OF CONSTRUCTION, PERMITS THE CONTRACTOR SHALL OBTAIN AND FEE TO THE COUNTY OF LOS ANGELES, DIVISION OF HIGHWAYS, 110 SOUTH SPRING STREET, LOS ANGELES, CALIFORNIA. IN ADDITION TO THE COUNTY OF LOS ANGELES, A PERMIT FOR EXCAVATIONS AND TRENCHES FROM THE STATE OF CALIFORNIA, DIVISION OF INDUSTRIAL SAFETY AND A CERTIFICATE OF WORKING CONDITIONS FROM THE CALIFORNIA DIVISION OF INDUSTRIAL SAFETY AND A CERTIFICATE OF WORKING CONDITIONS FROM THE CALIFORNIA DIVISION OF INDUSTRIAL SAFETY MUST BE OBTAINED AND FEE TO THE COUNTY OF LOS ANGELES, DIVISION OF HIGHWAYS, 110 SOUTH SPRING STREET, LOS ANGELES, CALIFORNIA.

CONSTRUCTION NOTES:

- WORK SHALL BE CONSTRUCTED ACCORDING TO THE STANDARD SPECIFICATIONS FOR PUBLIC WORKS CONSTRUCTION 1976 EDITION AND COUNTY ENGINEER SPECIAL PROVISIONS FOR THE CONSTRUCTION OF SANITARY SEWERS DATED SEPT. 24, 1976 AND SHALL BE PROSECUTED ONLY IN THE PRESENCE OF THE COUNTY ENGINEER.
- THE CONTRACTOR SHALL NOTIFY THE SUPERVISOR OF THE DIVISION BY TELEPHONE, (213) 974-7229, AT LEAST TWENTY-FOUR HOURS BEFORE STARTING ANY WORK UNDER THE CONTRACT.
- HOUSE LATERALS TO BE CONSTRUCTED WITH INVERTS AT PROPERTY LINE 4 FEET BELOW CURB GRADE EXCEPT AS NOTED.
- WYE OR TEE BRANCHES MAY BE USED FOR CONNECTIONS TO MAINLINE SEWERS EXCEPT AS NOTED.
- ALL STRUCTURES SHALL BE EITHER BRICK MANHOLES PER S-3 OR PRECAST CONCRETE MANHOLES PER S-26, EXCEPT AS NOTED.
- PROVIDE STAKES ON THE PROPERTY LINE OR PROPERTY LINES PRODUCED AT RIGHT ANGLES TO THE SEWER LINE AT THE CENTER LINE OF EACH MANHOLE.
- MANHOLE TOPS IN UNIMPROVED RIGHTS OF WAY SHALL BE SIX INCHES ABOVE FINISHED GRADE.
- VITRIFIED CLAY PIPE JOINTS SHALL BE TYPE "B", "T", OR "C" PER STANDARD SPECIFICATIONS SECTION 306-3.
- IF A POWER POLE IS WITHIN THREE FEET OF THE SEWER, THE SEWER SHALL BE ENCASED, PER S-25, CASE II, TWO FEET ON EACH SIDE FROM THE POINT OF INTERFERENCE.
- IF DURING THE COURSE OF CONSTRUCTION IT IS DETERMINED THAT THERE IS LESS THAN FOUR FEET OF COVER OVER THE TOP OF A MAIN LINE OR HOUSE LATERAL V.C.P. SEWER WHICH IS NOT INDICATED ON THE PLANS, THE PIPE SHALL BE ENCASED PER S-25, CASE II UNLESS OTHERWISE APPROVED BY THE COUNTY ENGINEER.
- ALL JOINTS BETWEEN CLAY PIPE AND VITRIFIED CLAY PIPE SHALL BE MADE WITH A RUBBER SLEEVE JOINT, TYPE "C" OR "B", WITH BUSHING IF NECESSARY PER STANDARD SPECIFICATIONS, SECTION 306-3.
- SEWERS TO BE AID PROTECTED TRENCH PER STANDARD SPECIFICATIONS SECTION 306-3 OF THE ESTABLISHED SPECIFICATIONS AND SPECIAL PROVISIONS. ALL TRENCHES WITHIN HAYES AREAS TO MEET L.A. COUNTY ROAD DEPT. OR CALIFORNIA STATE HIGHWAY REQUIREMENTS IN ACCORDANCE WITH PERMITS.
- FULL COMPLIANCE WITH SECTION 306-1.8.6 OF THE SPECIAL PROVISIONS WILL BE REQUIRED FOR BACKFILL IN STREETS. CERTIFICATION OF BACKFILL COMPACTION AND SAND EQUIVALENTS BY A QUALIFIED, REGISTERED TESTING LABORATORY SHALL BE PROVIDED BY THE PERMITTEE PRIOR TO THE ISSUANCE OF A CERTIFICATE OF PARTIAL ACCEPTANCE.

B.M. 9031 ELEV. 990.940
R.D.B.M. Tag in CB, 311 N., B.C.P.
43 FT. S. & 32 FT. E. & Int. by Old
Topanga Canyon Road & Wincrest Drive.
MALIBU QUAD. 19 72.



INDEX MAP
SCALE: 1"=500'
P.C. 9541

SEE L.V.M.W.D. FOR CONNECTION CHARGES
COLLECT CHARGES AS INDICATED

47163

