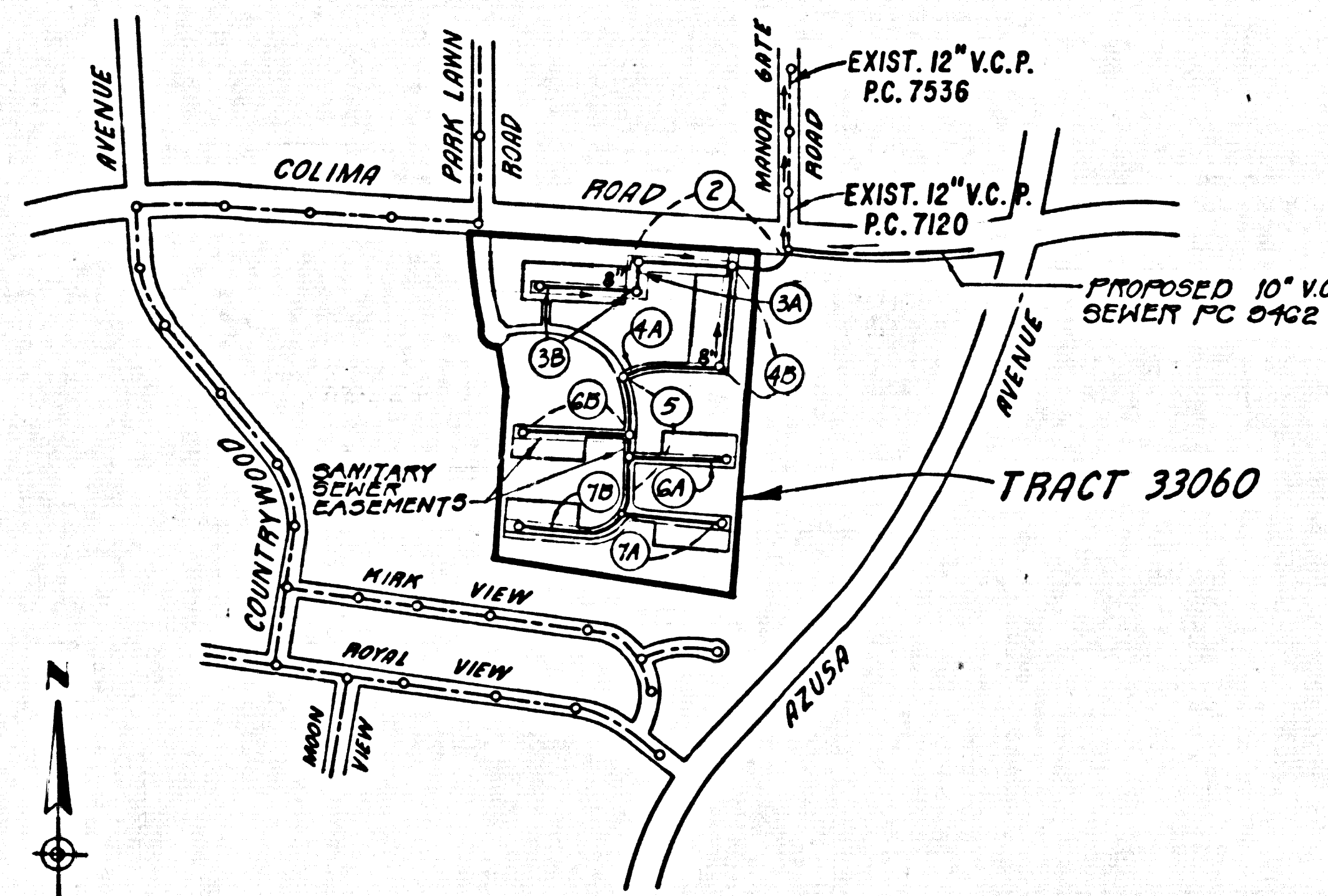


B.M. C6 3829 ELEV. 456.878
 R.B.M. T&S IN CURB 6' W/O CURB END,
 42' SOUTH AND 81' WEST OF INTERSECTION
 OF COLIMA RD. AND AZUSA AVE.
 OTTERBEIN QUAD. 1978

PRIVATE ENGINEERS NOTICE TO CONTRACTORS

THE EXISTENCE AND LOCATION OF ANY UNDERGROUND UTILITY PIPES OR STRUCTURES SHOWN ON THESE PLANS ARE OBTAINED BY A SEARCH OF THE AVAILABLE RECORDS. TO THE BEST OF OUR KNOWLEDGE THERE ARE NO EXISTING UTILITIES EXCEPT AS SHOWN ON THIS MAP. THE CONTRACTOR IS REQUIRED TO TAKE THE PRECAUTIONARY MEASURES TO PROTECT THE UTILITY LINES SHOWN AND ANY OTHERS NOT OF RECORD OR NOT SHOWN ON THIS DRAWING.

John G. Goetten 7/10/78
 REGISTERED CIVIL ENGINEER NO. 12108 DATE



INDEX MAP
 TRACT NO. 33060
 P.C. 9544

SCALE: 1"=600'
 NOTE: NUMBERS IN CIRCLES INDICATE PAGE NUMBERS

CONSTRUCTION NOTES: CONT.

16. COMPACTION SHALL BE IN COMPLIANCE WITH THE STANDARD SPECIFICATIONS FOR PUBLIC WORKS SEE SEC. 306-1.8.9.

BEFORE BREAKING INTO OR CONSTRUCTION ON A COUNTY SANITATION DISTRICT SEWER AND PRIOR TO FINAL ACCEPTANCE OF THE PROJECT SANITATION DISTRICT INSPECTOR SHALL BE NOTIFIED BY PHONE AND SO THAT REQUIRED INSPECTION CAN BE MADE.

NO CONNECTION FOR THE DISPOSAL OF INDUSTRIAL WASTES SHALL BE MADE TO SEWERS SHOWN ON THESE DRAWINGS UNTIL A PERMIT FOR INDUSTRIAL WASTE WATER DISCHARGE HAS BEEN ISSUED BY THE SANITATION DISTRICTS FOR SAID CONNECTION.

GENERAL NOTES: DOUBLE SCALE

- ELEVATIONS ARE IN FEET ABOVE U.S.C. & G.S. SEA LEVEL DATUM OF 1929.
- NO REVISIONS SHALL BE MADE IN THESE PLANS WITHOUT THE APPROVAL OF THE COUNTY ENGINEER.
- NO REPRESENTATIVE OF THE COUNTY ENGINEER WILL SURVEY OR LAY OUT ANY PORTION OF THE WORK.
- GRADES TO WHICH THIS IMPROVEMENT IS TO BE CONSTRUCTED ARE SHOWN ON PLANS AND PROFILES. GRADE POINTS FOR TOP OF CURBS, CENTER LINE OF STREETS, OR CENTER LINE OF ALLEYS ARE SHOWN BY CIRCLES ON PROFILES. AT ALL POINTS BETWEEN DESIGNATED POINTS THE GRADE SHALL BE ESTABLISHED SO AS TO CONFORM TO A STRAIGHT LINE DRAWN BETWEEN SAID DESIGNATED POINTS.
- THE PRIVATE ENGINEER SHALL FURNISH THE COUNTY ENGINEER WITH GRADE SHEETS AND STATIONING FOR ALL HOUSE LATERALS AND "T" OR "Y" BRANCHES AND SHALL PROVIDE STAKES FOR THEM AT THEIR PROPER LOCATIONS WITH STATIONING PLAINLY MARKED. ALL HOUSE LATERALS SHALL BE CONSTRUCTED IN A STRAIGHT ALIGNMENT AT RIGHT ANGLES FROM THE MAIN LINE SEWER EXCEPT AS SHOWN ON THE PLANS. HOUSE LATERALS FROM CHIMNEYS SHALL NOT HAVE AN ANGLE OF LESS THAN 45° WITH THE MAIN LINE SEWER. ANY CHANGE IN ALIGNMENT SHALL BE REQUESTED IN WRITING BY THE PRIVATE ENGINEER.
- THE PRIVATE ENGINEER SHALL FURNISH THE HOUSE LATERAL DEPTH AT THE PROPERTY LINE BELOW THE TOP OF CURB ELEVATION FOR EACH HOUSE LATERAL ON THE GRADE SHEET.
- BEFORE WORK CAN BE STARTED, THE CONTRACTOR MUST OBTAIN A PERMIT TO EXCAVATE IN COUNTY STREETS FROM THE L.A. COUNTY ROAD DEPT., DISTRICT OFFICE NO. 1, AND PAY A FEE TO THE COUNTY ENGINEER, 302 E. ROWENA, SAN DIMAS.
- IF WORK IS TO BE DONE IN A STATE HIGHWAY, A PERMIT MUST BE OBTAINED FROM THE STATE OF CALIFORNIA, DIVISION OF HIGHWAYS, 130 SOUTH SPRING STREET, LOS ANGELES, CALIFORNIA.
- APPROVAL OF THIS PLAN BY THE COUNTY OF LOS ANGELES DOES NOT CONSTITUTE A REPRESENTATION AS TO THE ACCURACY OF THE LOCATION OR OF THE EXISTENCE OR NON-EXISTENCE OF ANY UNDERGROUND UTILITY PIPE, OR STRUCTURE WITHIN THE LIMITS OF THIS PROJECT. THIS NOTE APPLIES TO ALL PAGES.
- REFER TO SECTION 7-10.4.3 OF THE STANDARD SPECIFICATIONS, REGARDING SAFETY ORDERS.
- PRIOR TO ISSUANCE OF THE REQUIRED SEWER CONSTRUCTION PERMIT BY THE COUNTY ENGINEER, THE CONTRACTOR SHALL OBTAIN A PERMIT TO EXCAVATE FROM THE STATE OF CALIFORNIA, DEPARTMENT OF INDUSTRIAL RELATIONS, DIVISION OF INDUSTRIAL SAFETY AND SHALL FILE A CERTIFICATE OF WORKERS COMPENSATION INSURANCE AND LIABILITY INSURANCE WITH THE COUNTY ENGINEER.

CONSTRUCTION NOTES:

- WORK SHALL BE CONSTRUCTED ACCORDING TO THE STANDARD SPECIFICATIONS FOR PUBLIC WORKS CONSTRUCTION 1978 EDITION AND COUNTY ENGINEER SPECIAL PROVISIONS FOR THE CONSTRUCTION OF SANITARY SEWERS DATED SEPTEMBER 21, 1978 AND SHALL BE PROSECUTED ONLY IN THE PRESENCE OF THE COUNTY ENGINEER.
- THE CONTRACTOR SHALL NOTIFY THE ENVIRONMENTAL DEVELOPMENT DIVISION PHONE (213) 97-7289, AT LEAST TWENTY FOUR HOURS BEFORE STARTING ANY WORK UNDER THIS CONTRACT.
- HOUSE LATERALS TO BE CONSTRUCTED WITH INVERTS AT PROPERTY LINE 6 FEET BELOW CURB GRADE EXCEPT AS NOTED.
- WYE OR THE BRANCHES MAY BE USED FOR CONNECTIONS TO MAINLINE SEWERS EXCEPT AS NOTED.
- ALL STRUCTURES SHALL BE EITHER BRICK MANHOLES PER 5-24 OR PRECAST CONCRETE MANHOLES PER 5-24, EXCEPT AS NOTED.
- PROVIDE STAKES ON THE PROPERTY LINE OR PROPERTY LINES PROVIDED AT RIGHT ANGLES TO THE SEWER LINE AT THE CENTER LINE OF EACH MANHOLE.
- MANHOLE TOPS IN UNIMPROVED RIGHTS OF WAY TO BE SIX INCHES ABOVE FINISHED GRADE.
- VITRIFIED CLAY PIPE JOINTS SHALL BE TYPE "B", "P", OR "Q" PER STANDARD SPECIFICATIONS SECTION 306-2.
- IF A POWER POLE IS WITHIN THREE FEET OF THE SEWER, THE SEWER SHALL BE ENCASED, PER 5-23, CASE II, TWO FEET ON EACH SIDE FROM THE POINT OF INTERFERENCE.
- IF DURING THE COURSE OF CONSTRUCTION IT IS DETERMINED THAT THERE IS LESS THAN FOUR FEET OF COVER OVER THE TOP OF A MAIN LINE OR HOUSE LATERAL V.C.P. SEWER WHICH IS NOT INDICATED ON THE PLANS, THE PIPE SHALL BE ENCASED PER 5-23, CASE II UNLESS OTHERWISE APPROVED BY THE COUNTY ENGINEER.
- ALL JOINTS BETWEEN CAST IRON PIPE AND VITRIFIED CLAY PIPE SHALL BE MADE WITH A RUBBER SLEEVE JOINT, TYPE "C" OR "D", WITH BUSHING IF NECESSARY PER STANDARD SPECIFICATIONS, SECTION 306-2.
- SEWERS TO BE TESTED FOR LEAKAGE PER SECTION 306-1.6 OF THE STANDARD SPECIFICATIONS AND SPECIAL PROVISIONS.
- RESURFACE ALL TRENCHES WITHIN PAVED AREAS TO MEET L.A. COUNTY ROAD DEPT. OR CALIFORNIA STATE HIGHWAY REQUIREMENTS IN ACCORDANCE WITH PERMITS.
- FOR COMPLIANCE WITH SECTION 306-2.3.3 OF THE SPECIAL PROVISIONS WILL BE REQUIRED FOR BACKFILL IN STREETS. CERTIFICATION OF BACKFILL COMPOSITION AND SAND EQUIVALENTS BY A QUALIFIED, REGISTERED TESTING LABORATORY SHALL BE PROVIDED BY THE PERMITTEE PRIOR TO THE ISSUANCE OF A CERTIFICATE OF PARTIAL ACCEPTANCE.
- SPECIAL BACKFILL IN DESIGNATED AREAS:
 A. BACKFILL TRENCH AND REPLACE OTHER EARTH REMOVED SO AS TO ACHIEVE THE NATURAL OR FINISHED GRADES & SLOPES SHOWN ON THE GRADING PLAN APPROVED FOR THIS PARCEL MAP BY THE BUILDING AND SAFETY DIVISION.
 B. ALL BACKFILL AND EARTH REPLACES SHALL BE COMPACTED TO A MINIMUM OF 90% OF MAXIMUM DENSITY PER A.S.T.M. STANDARD METHOD OF TESTING GRAVITY AS WORKING ACCEPTABLE CERTIFICATION OF SUCH COMPACTION SHALL BE SUBMITTED TO THE ENVIRONMENTAL DEVELOPMENT DIVISION.

CONSTRUCTED IN
 TRACT NO. 33060
 PRIVATE CONTRACT NO. 9544

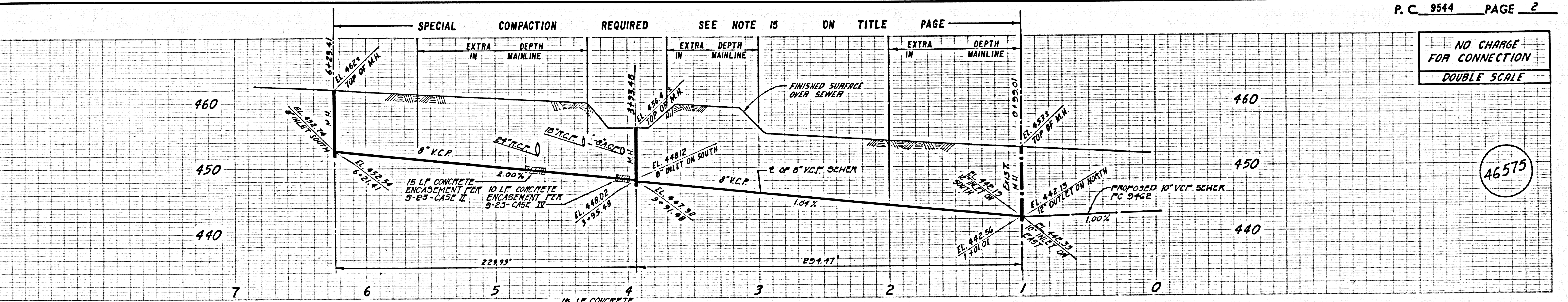
W.S. 388-4
 SHEETS, 7 PAGES
 SCALE: VERT. 1"=8'
 HORIZ. 1"=40' OCT., 1978
 PREPARED IN THE OFFICES OF
 JOHN G. GOETTEN
 CONSULTING CIVIL ENGINEER, INC.
 1509 W. REDDING, TULSA, OKLA. 74106 (714) 731-1933
 BY: *John G. Goetten*
 REG. C. E. No. 12108

46574

THE FOLLOWING LATEST REVISED STANDARD PLANS ON FILE IN THE OFFICE OF THE COUNTY ENGINEER SHALL APPLY IN THE CONSTRUCTION OF THIS PROJECT:

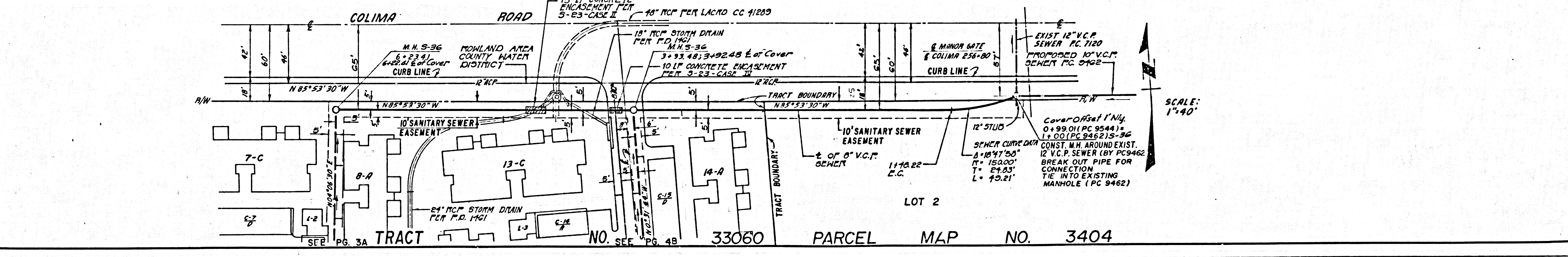
LEGEND	5-1
MINIMUM PUBLIC SAFETY REQUIREMENTS	5-2
BRICK MANHOLE	5-3
STANDARD MANHOLE STEP	5-17
BEDDING FOR SEWER PIPE	5-20
CRADLING AND ENCASEMENT	5-21
ALLOWABLE TRENCH WIDTHS	5-26
LOCKING MANHOLE FRAME AND COVER	5-28
NON-REINFORCED PRECAST CONCRETE MANHOLE	5-28

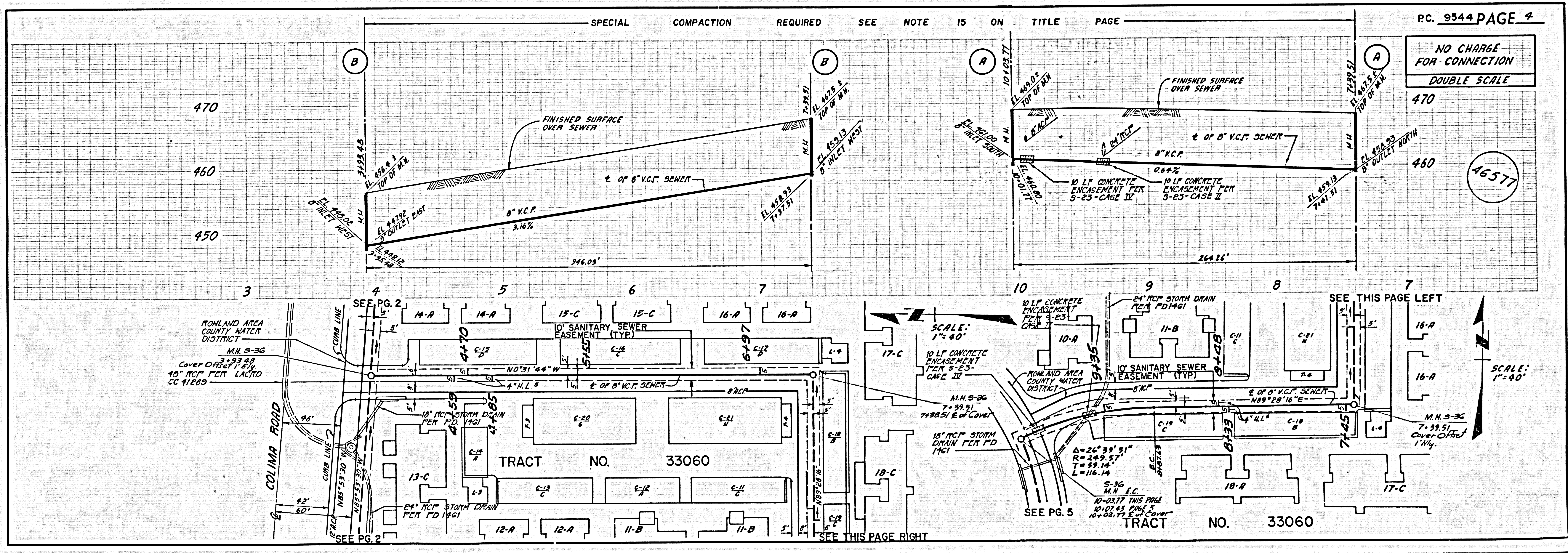
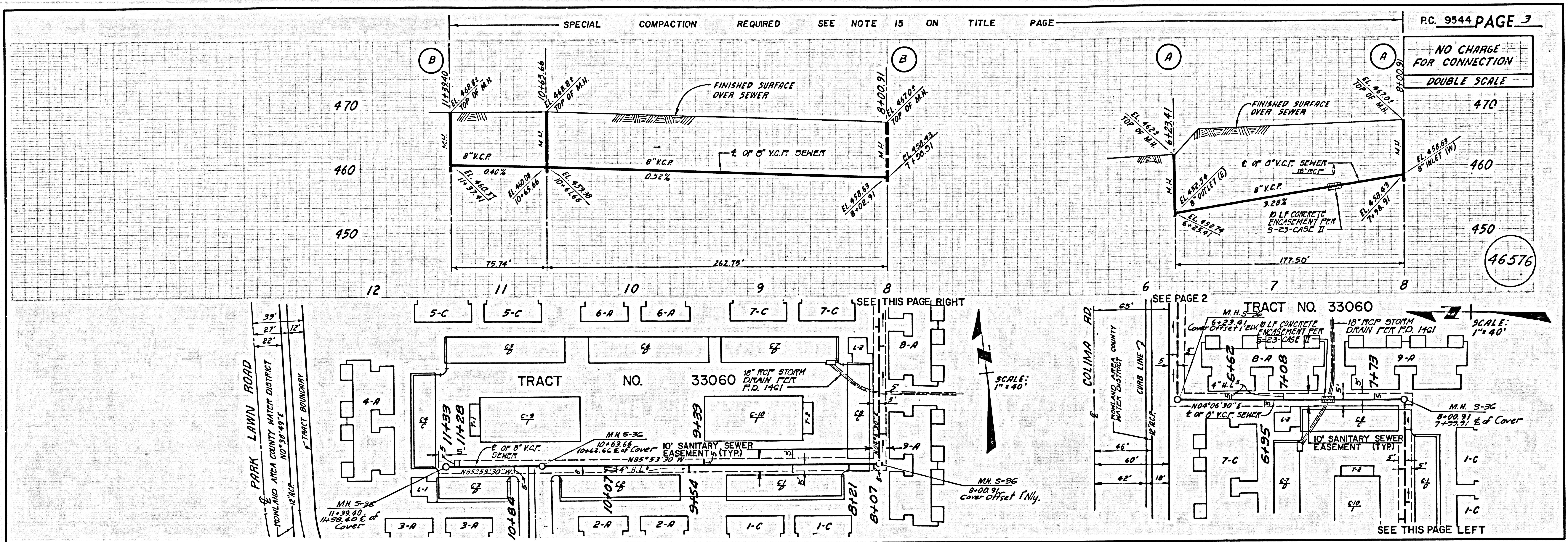
COUNTY OF LOS ANGELES, CALIFORNIA
 STEPHEN J. KOONCE, COUNTY ENGINEER JOHN D. PARKHURST, CHIEF ENGINEER
 APPROVED *John D. Parkhurst* 8/29/78 APPROVED *John D. Parkhurst* 9/5/78
 SAN DIMAS REGIONAL ENGINEER OFFICE ENGINEER
 CHECKED *Edward H. Hedges* 8/29/78 (DATE)
 NO. C.E. NO. 10653
 L.A. PUENTE BLDG. DIST. NO. 2 I.N. 0358.02



NO CHARGE FOR CONNECTION
 DOUBLE SCALE

46575

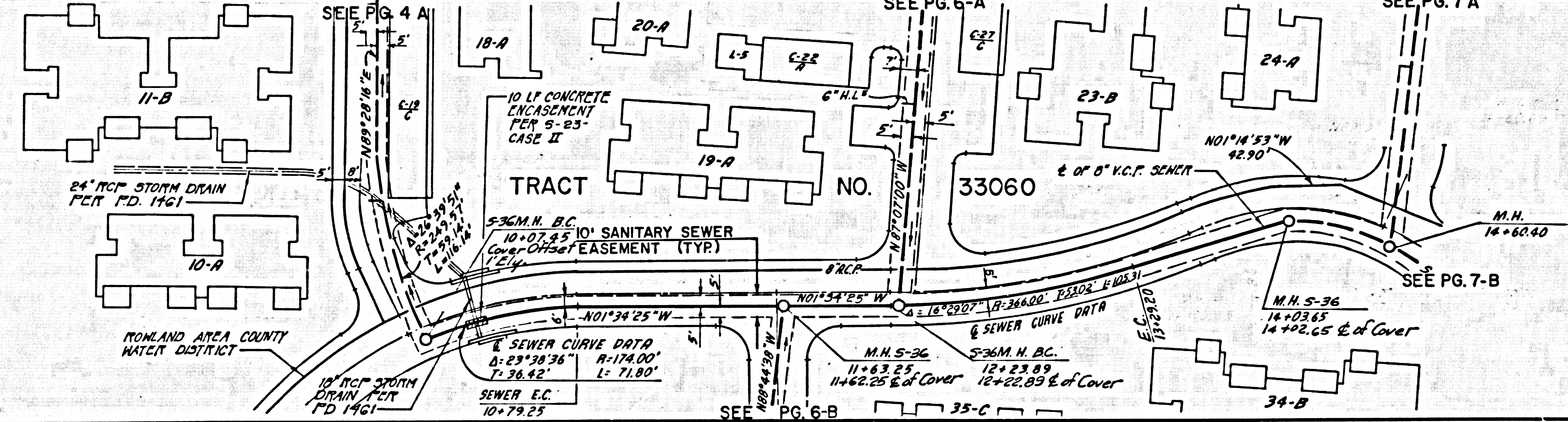
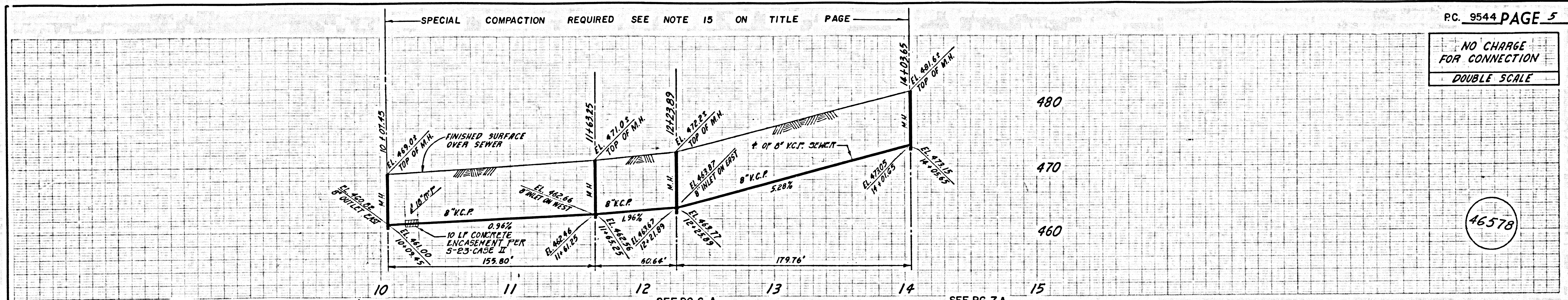




NO CHARGE FOR CONNECTION
DOUBLE SCALE

46578

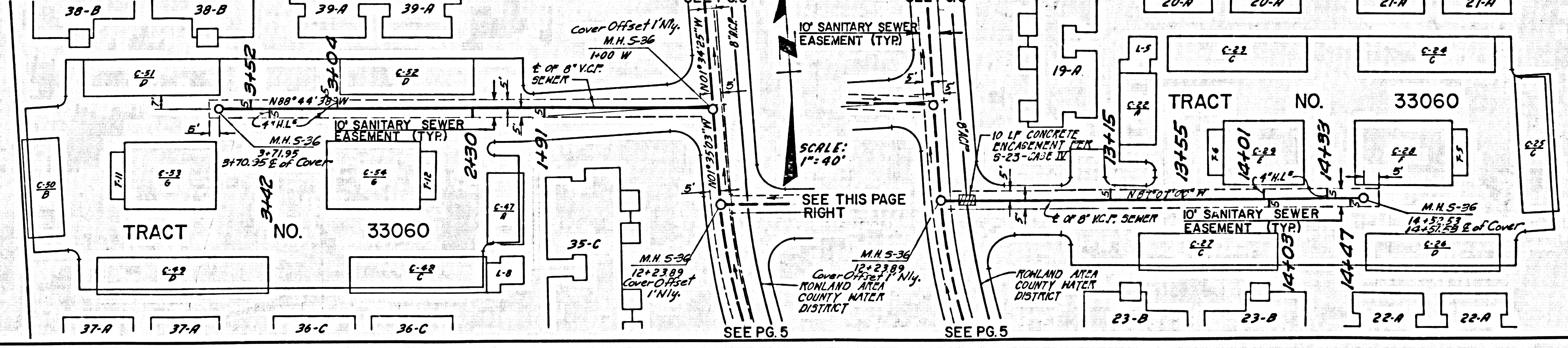
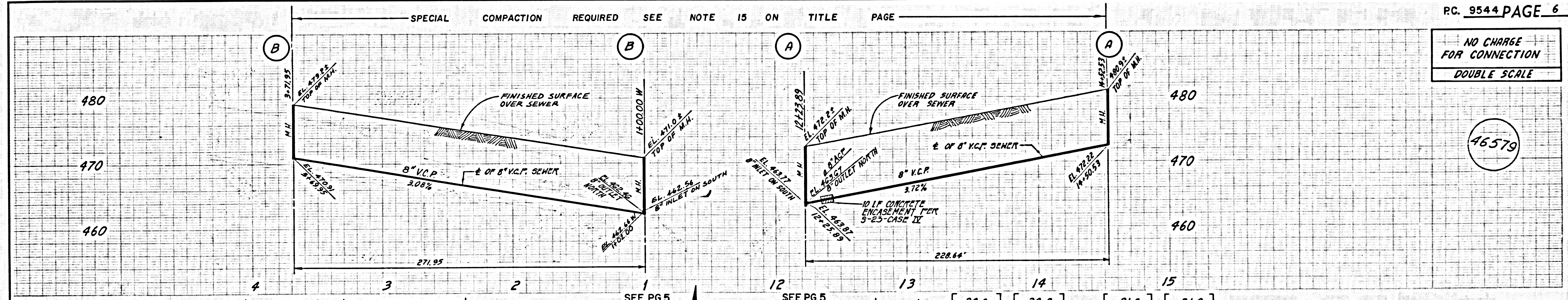
SPECIAL COMPACTION REQUIRED SEE NOTE 15 ON TITLE PAGE



NO CHARGE FOR CONNECTION
DOUBLE SCALE

46579

SPECIAL COMPACTION REQUIRED SEE NOTE 15 ON TITLE PAGE



NO CHARGE FOR CONNECTION
DOUBLE SCALE

46580

