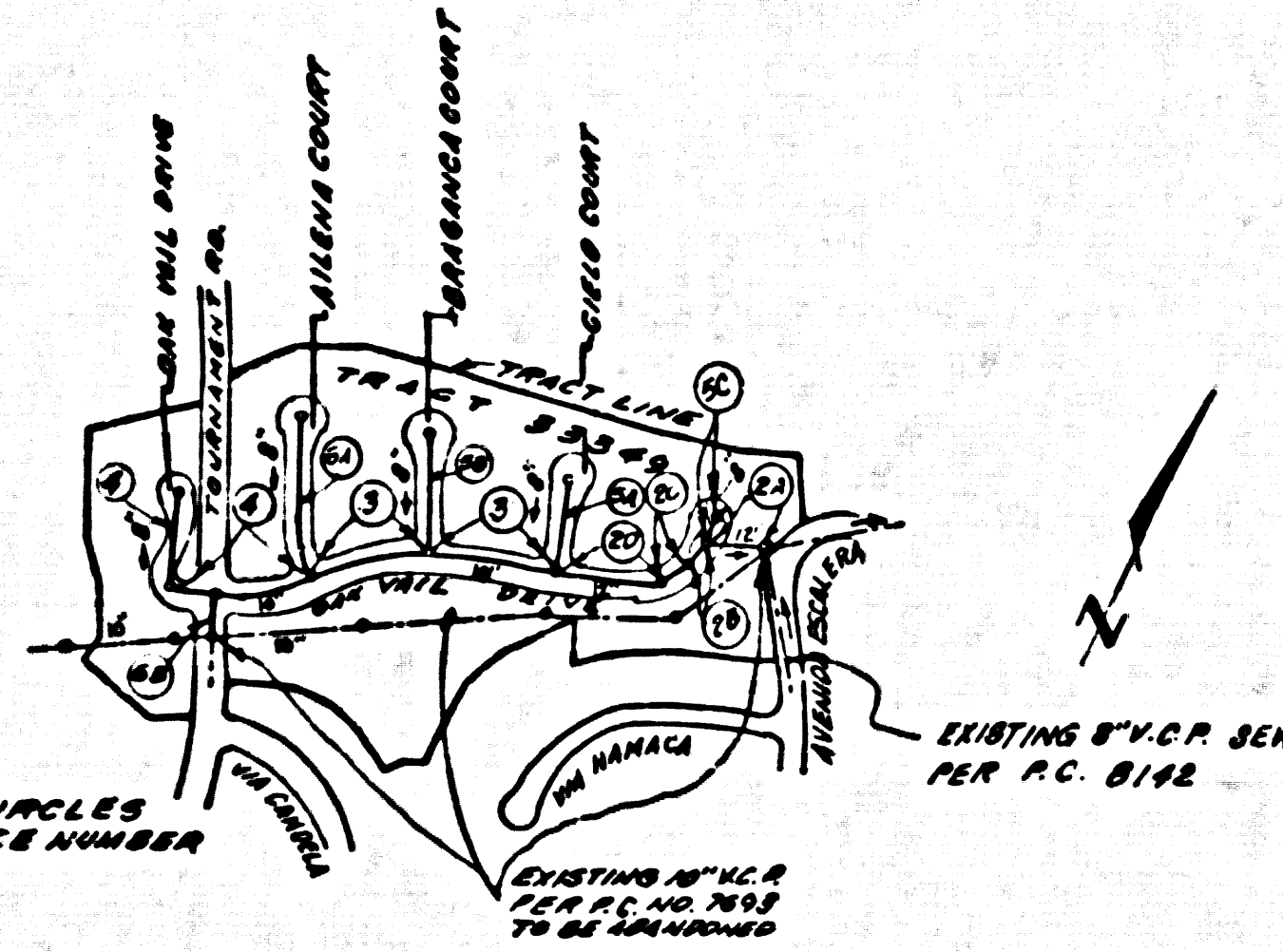


B.M. BL 3960 ELEV. 1262.603
 R.D.B.M. TAG IN CONC. BASE OF EDISON
 RR# 1927400 E. 80 FT. 5' + 6' 1 FT.
 E. C/L INT. LYONS AVE + WILEY CH. RD.
 NEWHALL QUAD. 1972.



INDEX MAP
 SCALE 1"=500'
 P.C. 9545

15. SPECIAL BACKFILL IN EASEMENT CONSTRUCTION
 (a) BACKFILL TRENCH AND REPLACE OTHER EARTH SO AS TO MAINTAIN THE NATURAL OR FINISHED GRADES & SLOPES SHOWN ON THE GRADING PLAN APPROVED FOR THIS DEVELOPMENT BY THE BUILDING & SAFETY DIVISION.
 (b) ALL BACKFILL & EARTH REPLACED SHALL BE COMPACTED TO A MINIMUM OF 90% OF MAXIMUM DENSITY PER A.S.T.M. STD. METHOD OF TEST D-698-57T AS MODIFIED ACCEPTABLE CERTIFICATION OF SUCH COMPACTION SHALL BE SUBMITTED TO THE DESIGN DIVISION.
16. EXISTING 10" V.C.P. MAIN LINE SEWER CONSTRUCTED UNDER P.C. 7693, BETWEEN STA. 19+78.10 (PAGE 4) AND STA. 31+06.60 (PAGE 5) OF P.C. 7693, ALONG WITH EXISTING M.H.S. AT STATIONS 21+98.62 & 24+96.28 (PAGE 4) AND EXISTING M.H. AT STA. 28+21.28 (PAGE 5) OF P.C. 7693 TO BE ABANDONED PER SEC. 306.51 OF STD. SPECS. AND SPECIAL PROVISIONS. PORTIONS OF P.C. 7693 THAT ARE TO BE ABANDONED ARE SHOWN ON THE INDEX MAP AND ON PAGES 2-A, 3 & 6-B OF THIS PROJECT.

NO CONNECTION FOR THE DISPOSAL OF INDUSTRIAL WASTES SHALL BE MADE TO SEWERS SHOWN ON THESE DRAWINGS UNLESS A PERMIT FOR INDUSTRIAL WASTE WATER DISCHARGE HAS BEEN ISSUED BY THE SANITATION DISTRICTS FOR SUCH CONNECTION.

BEFORE BREAKING INTO OR CONSTRUCTION ON A COUNTY SANITATION DISTRICT SEWER AND PRIOR TO THE ACCEPTANCE OF THE PROJECT SANITATION DISTRICT INSPECTION SHALL BE NOTIFIED BY PHONE 962-8605 SO THAT REQUIRED INSPECTION CAN BE MADE.

NOTE: CONTRACTOR SHALL MAINTAIN EXISTING SEWER SERVICE AT ALL TIMES

GENERAL NOTES:

- ELEVATIONS ARE IN FEET ABOVE U.S.C. & G.S. SEA LEVEL DATUM OF 1929.
- NO REVISIONS SHALL BE MADE IN THESE PLANS WITHOUT THE APPROVAL OF THE COUNTY ENGINEER.
- NO REPRESENTATIVE OF THE COUNTY ENGINEER WILL SURVEY OR LAY OUT ANY PORTION OF THE WORK.
- GRADES TO WHICH THIS IMPROVEMENT IS TO BE CONSTRUCTED ARE SHOWN ON PLANS AND PROFILES. GRADE POINTS FOR TOP OF CURBS, CENTER LINE OF STREETS, OR CENTER LINE OF ALLEYS ARE SHOWN BY CIRCLES ON PROFILES. AT ALL POINTS BETWEEN DESIGNATED POINTS THE GRADE SHALL BE ESTABLISHED SO AS TO CONFORM TO A STRAIGHT LINE BEYOND SAID DESIGNATED POINTS.
- THE PRIVATE ENGINEER SHALL FURNISH THE COUNTY ENGINEER WITH GRADE SHEETS AND STATIONING FOR ALL HOUSE LATERALS AND "T" OR "Y" BRANCHES AND SHALL PROVIDE STAKES FOR THEM AT THESE PROPER LOCATIONS WITH STATIONING PLAINLY MARKED. ALL HOUSE LATERALS SHALL BE CONSTRUCTED IN A STRAIGHT LINE ALIGNMENT AT RIGHT ANGLES FROM THE MAIN LINE SEWER EXCEPT AS SHOWN ON THE PLANS. HOUSE LATERALS FROM CHIMNEYS SHALL NOT HAVE AN ANGLE OF LESS THAN 45° WITH THE MAIN LINE SEWER. ANY CHANGE IN ALIGNMENT SHALL BE REQUESTED IN WRITING BY THE PRIVATE ENGINEER.
- THE PRIVATE ENGINEER SHALL FURNISH THE HOUSE LATERAL DEPTH AT THE PROPERTY LINE BELOW THE TOP OF CURB ELEVATION FOR EACH HOUSE LATERAL ON THE GRADE SHEET.
- BEFORE WORK CAN BE STARTED, THE CONTRACTOR MUST OBTAIN A PERMIT TO EXCAVATE IN COUNTY STREETS FROM THE L.A. COUNTY ROAD DEPT., DISTRICT OFFICE NO. 4, AND PAY A FEE TO THE COUNTY ENGINEER, SANTA CLARITA VALLEY REGIONAL OFFICE, TO COVER THE COST OF CONSTRUCTION INSPECTION AND RECORD PLANS.
- IF WORK IS TO BE DONE ON A STATE HIGHWAY, A PERMIT MUST BE OBTAINED FROM THE STATE OF CALIFORNIA, DIVISION OF HIGHWAYS, 130 SOUTH SPRING STREET, LOS ANGELES, CALIFORNIA.
- APPROVAL OF THIS PLAN BY THE COUNTY OF LOS ANGELES DOES NOT CONSTITUTE A REPRESENTATION AS TO THE ACCURACY OF THE LOCATION OF OR THE EXISTENCE OR NON-EXISTENCE OF ANY UNDERGROUND UTILITY PIPE, OR STRUCTURE WITHIN THE LIMITS OF THIS PROJECT. THIS NOTE APPLIES TO ALL PAGES.
- REFER TO SECTION 7-10.41 OF THE STANDARD SPECIFICATIONS, REGARDING SAFETY ORDEES.
- PRIOR TO THE ISSUANCE OF THE REQUIRED SEWER CONSTRUCTION PERMIT BY THE COUNTY ENGINEER, THE CONTRACTOR SHALL OBTAIN A PERMIT TO EXCAVATE FROM THE STATE OF CALIFORNIA, DIVISION OF INDUSTRIAL SAFETY.
- PRIOR TO THE ISSUANCE OF THE REQUIRED SEWER CONSTRUCTION PERMIT BY THE COUNTY ENGINEER, THE CONTRACTOR SHALL OBTAIN A CERTIFICATE OF WORKERS COMPENSATION INSURANCE LISTING THE LOS ANGELES COUNTY ENGINEER, 23757 WEST VALENCIA BOULEVARD, VALENCIA, CALIFORNIA 91355 AS THE CERTIFICATE HOLDER.

CONSTRUCTION NOTES:

- WORK SHALL BE CONSTRUCTED ACCORDING TO THE STANDARD SPECIFICATIONS FOR PUBLIC WORKS CONSTRUCTION (1976 EDITION) WITH 1977 SUPPLEMENTS AND COUNTY ENGINEER SPECIAL PROVISIONS FOR THE CONSTRUCTION OF SANITARY SEWERS DATED SECT. 7-12.72 AND SHALL BE PROTECTED ONLY IN THE PRESENCE OF THE COUNTY ENGINEER.
- THE CONTRACTOR SHALL NOTIFY THE DESIGN DIVISION BY TELEPHONE, (213) 974-7823 AT LEAST TWENTY-FOUR HOURS BEFORE STARTING ANY WORK UNDER THIS CONTRACT.
- HOUSE LATERALS TO BE CONSTRUCTED WITH INVERTS AT PROPERTY LINE 4 FEET BELOW CURB GRADE EXCEPT AS NOTED.
- WYE OR TEE BRANCHES MAY BE USED FOR CONNECTIONS TO MAINLINE SEWERS EXCEPT AS NOTED.
- ALL STRUCTURES SHALL BE EITHER BRICK MANHOLES PER S-3, OR PRECAST CONCRETE MANHOLES PER S-3A, EXCEPT AS NOTED.
- PROVIDE STAKES ON THE PROPERTY LINE OR PROPERTY LINES PRODUCED AT RIGHT ANGLES TO THE SEWER LINE AT THE CENTER LINE OF EACH MANHOLE.
- MANHOLE TOPS IN UNIMPROVED RIGHTS OF WAY TO BE SIX INCHES ABOVE FINISHED GRADE.
- VITRIFIED CLAY PIPE JOINTS SHALL BE TYPE "B", "T", OR "G" PER STANDARD SPECIFICATIONS SECTION 308-2.
- IF A POWER POLE IS WITHIN THREE FEET OF THE SEWER, THE SEWER SHALL BE ENCASED, PER S-23, CASE II, TWO FEET ON EACH SIDE FROM THE POINT OF INTERFERENCE.
- IF DURING THE COURSE OF CONSTRUCTION IT IS DETERMINED THAT THERE IS LESS THAN FOUR FEET OF COVER OVER THE TOP OF A MAIN LINE OR HOUSE LATERAL V.C.P. SEWER WHICH IS NOT INDICATED ON THE PLANS, THE PIPE SHALL BE ENCASED PER S-23, CASE II UNLESS OTHERWISE APPROVED BY THE COUNTY ENGINEER.
- ALL JOINTS BETWEEN CAST IRON PIPE AND VITRIFIED CLAY PIPE SHALL BE MADE WITH A RUBBER SLEEVE JOINT, TYPE "C" OR "D", WITH RUBBER IF NECESSARY PER STANDARD SPECIFICATIONS, SECTION 308-2.
- SEWERS TO BE TESTED FOR LEAKAGE PER SECTION 306.4 OF THE STANDARD SPECIFICATIONS AND SPECIAL PROVISIONS.
- RESURFACE ALL TRENCHES WITHIN PAVED AREAS TO MEET L.A. COUNTY ROAD DEPT. OR CALIFORNIA STATE HIGHWAY REQUIREMENTS IN ACCORDANCE WITH PERMITS.
- FULL COMPLIANCE WITH SECTION 306.1 B OF THE SPECIAL PROVISIONS WILL BE REQUIRED FOR BACKFILL IN STREETS. CERTIFICATION OF BACKFILL COMPACTION AND SAND EQUIVALENTS BY A QUALIFIED, REGISTERED TESTING LABORATORY SHALL BE PROVIDED BY THE PERMITTEE PRIOR TO THE ISSUANCE OF A CERTIFICATE OF PARTIAL ACCEPTANCE.

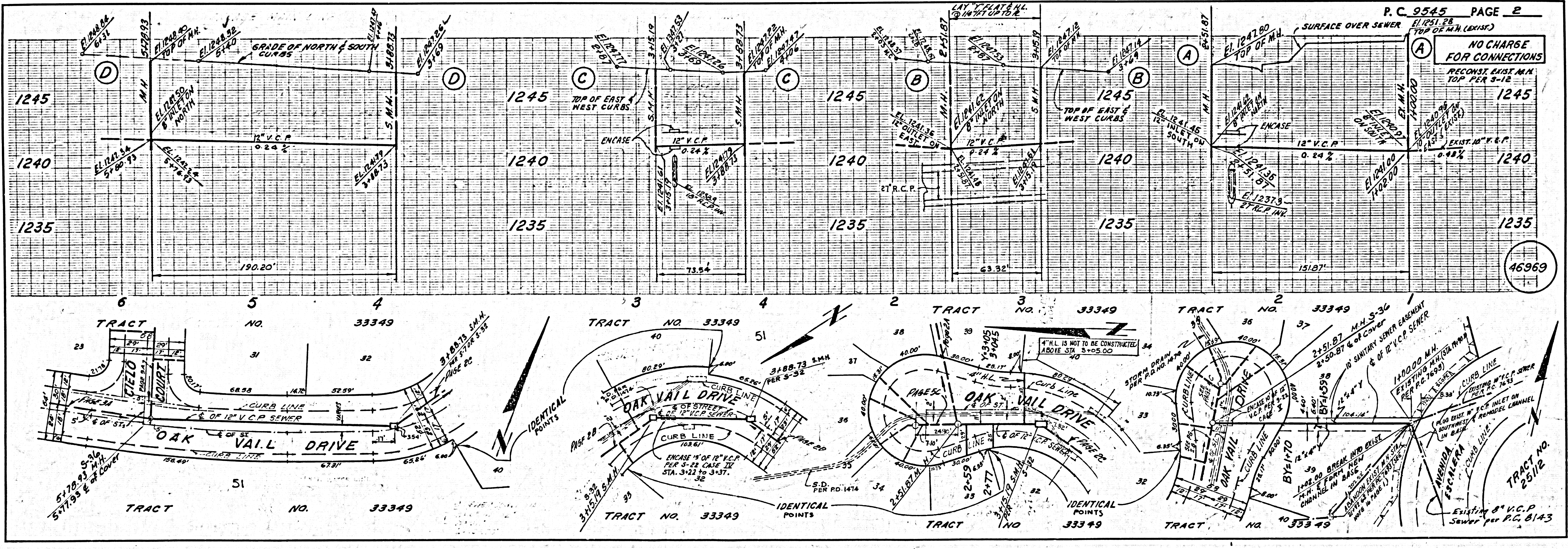
TRACT NO. 33349
 PRIVATE CONTRACT NO. 9545
 INDEX 252 S 121

W.S. 63-E, 3
 3 SHEETS, 6 PAGES
 SCALE: VERT. 1"=4'
 HORIZ. 1"=40'
 1978
 PREPARED IN THE OFFICES OF
SIXANO ENGINEERING ASSOCIATES
 15230 BURBANK BLVD. VAN NUYS, CAL. 91411
 BY: Nevada C. Kanoy (213) 787-6550
 REG. C. E. No. 21893

THE FOLLOWING LATEST REVISED STANDARD PLANS ON FILE IN THE OFFICE OF THE COUNTY ENGINEER SHALL APPLY IN THE CONSTRUCTION OF THIS PROJECT.

LEGEND	S-1
MINIMUM PUBLIC SAFETY REQUIREMENTS	S-2
BRICK MANHOLE	S-3
STANDARD MANHOLE STEP	S-31
BEDDING FOR SEWER PIPE	S-31
CRADLING AND ENCASEMENT	S-23
WYE OR TEE SUPPORT	S-24
ALLOWABLE TRENCH WIDTHS	S-25
LOCKING MANHOLE FRAME AND COVER	S-26
NON-REINFORCED PRECAST CONCRETE MANHOLE	S-26
RECTANGULAR SHALLOW MANHOLE	S-27
PRECAST CONCRETE SHALLOW MANHOLE	S-28
RECTANGULAR MANHOLE FRAME & COVERS	S-10
RECONSTRUCTION OF BRICK MANHOLE TOPS	S-40

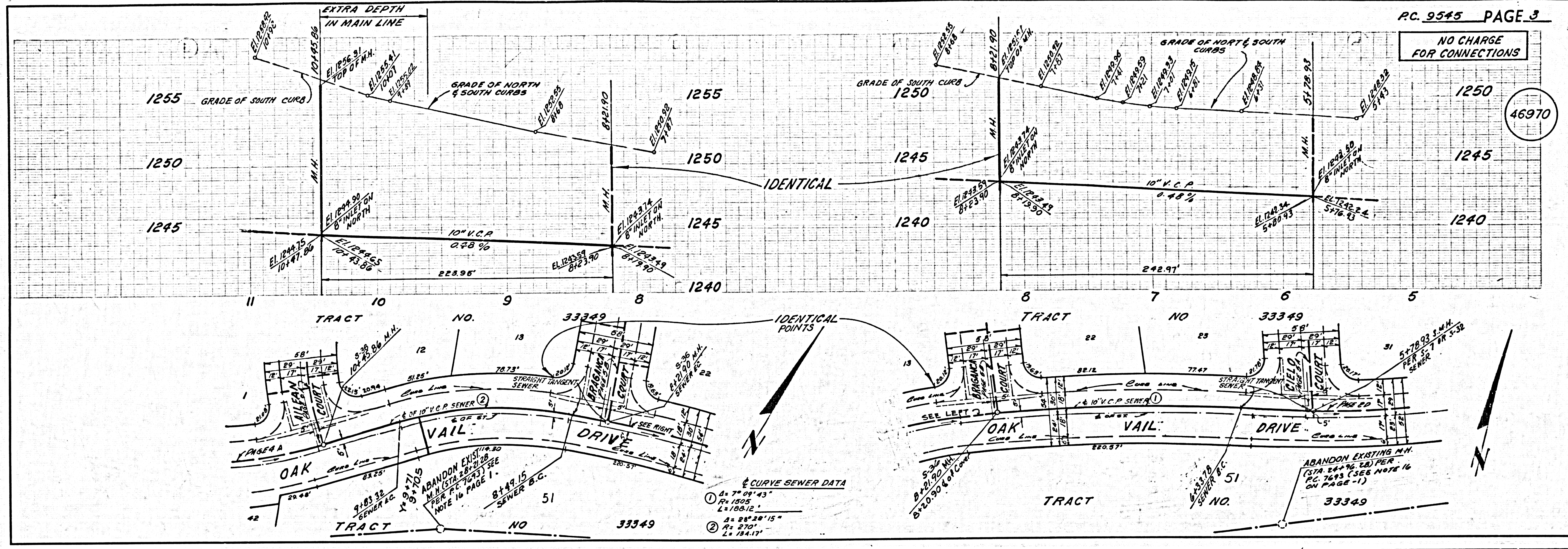
COUNTY OF LOS ANGELES, CALIFORNIA
 STEPHEN J. KOONCE, COUNTY ENGINEER JOHN D. PARKHURST, CHIEF ENGINEER
 APPROVED Robert Worthington APPROVED John D. Parkhurst
 REGIONAL ENGINEER OFFICE ENGINEER
 CHECKED Edward H. Meloy 11-14-78
 DATE
 REG. C. E. NO. 100023
 SANTA CLARITA VALLEY BLDG. DIST. 88 I. N. 025832



1
 PAGE 1
 BC 2242

NO CHARGE FOR CONNECTIONS

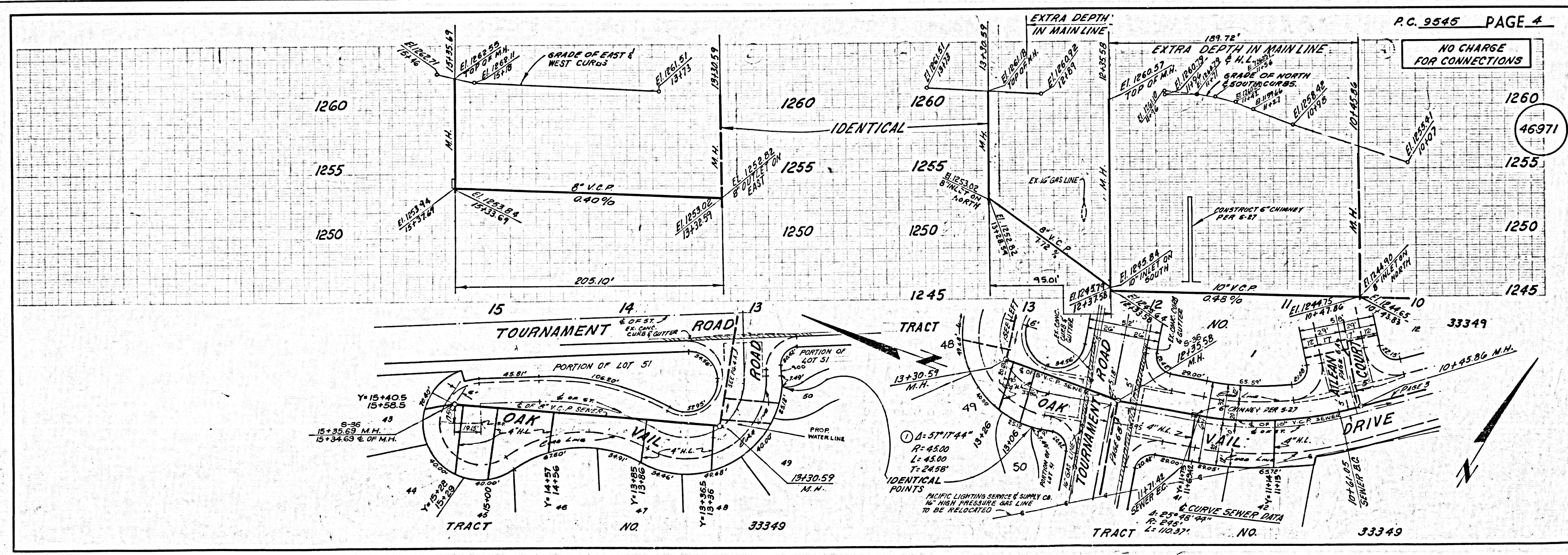
46970

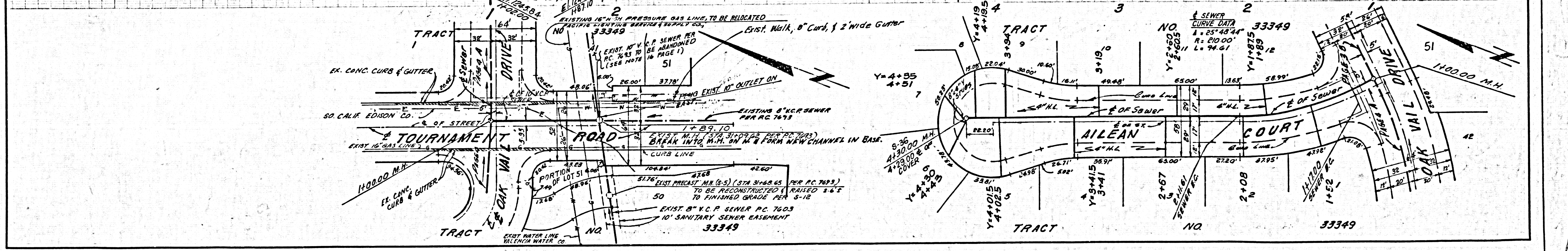
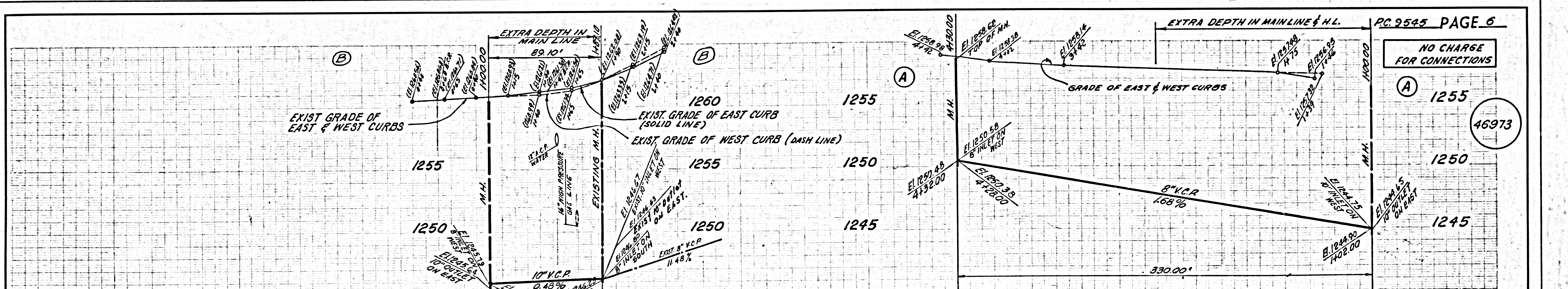
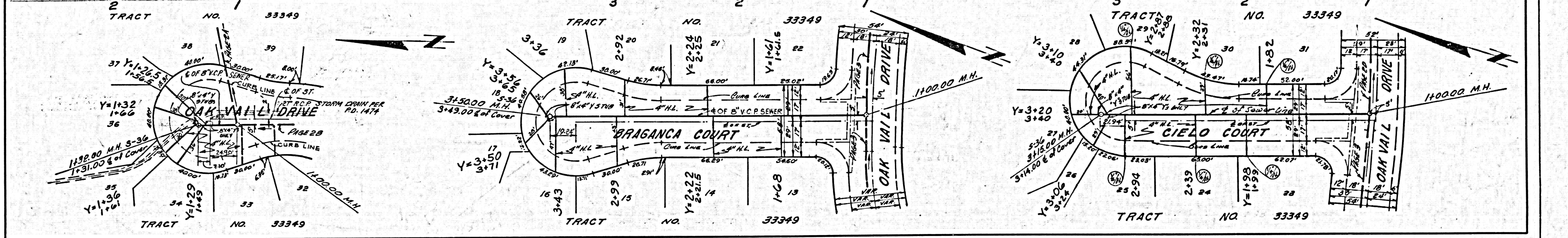
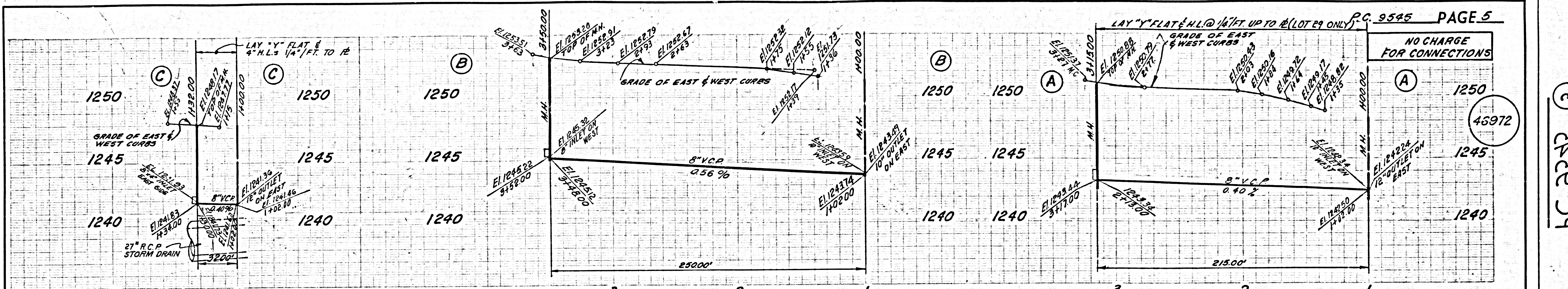


BC 2722 S

NO CHARGE FOR CONNECTIONS

46971





BC 222 3