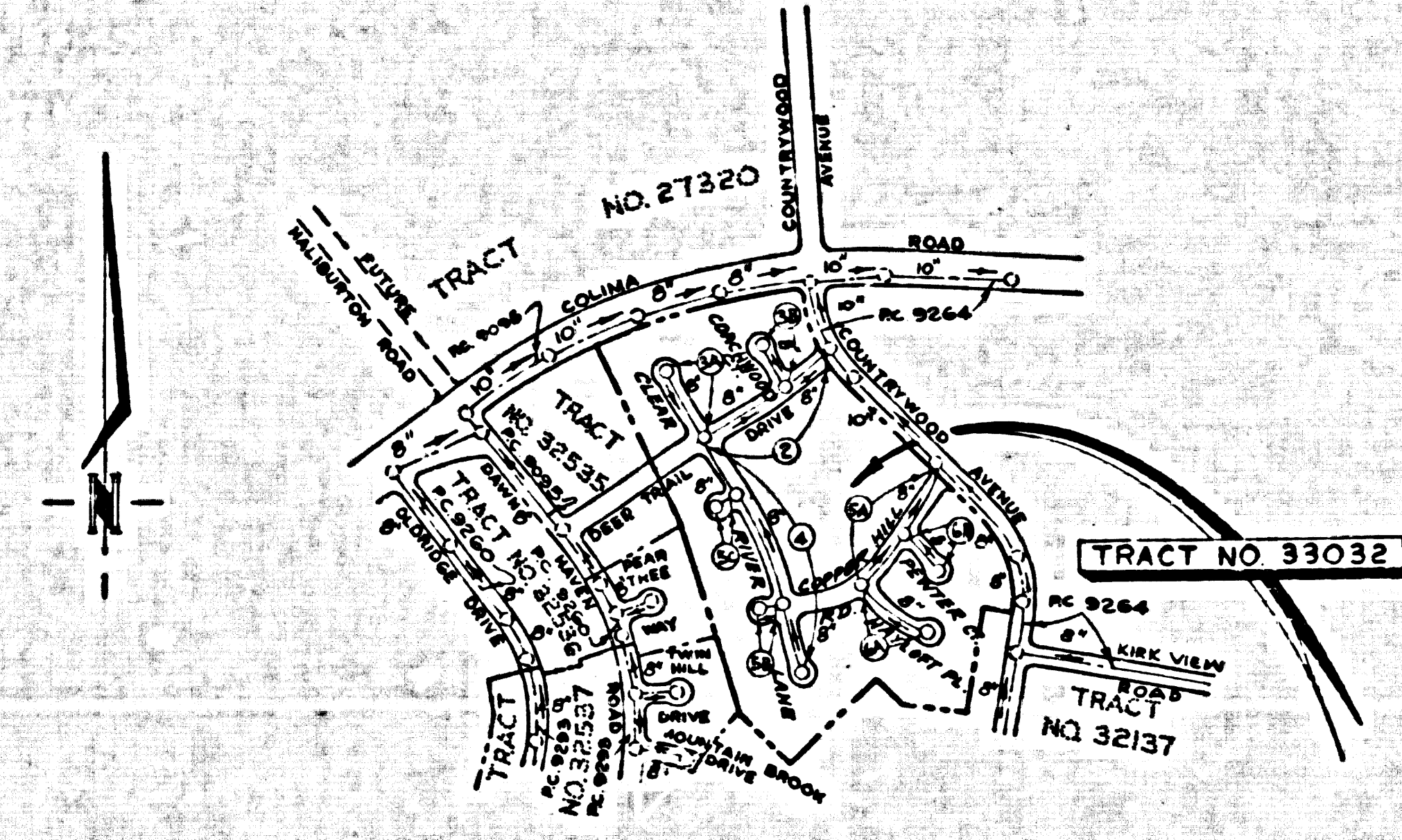


SCALE: VERT. 1"=4'
HORIZ. 1"=40'
JANUARY, 1978
PREPARED IN THE OFFICES OF
HOPEN, HEDLUND & DARBY, INC.
3030 W. MAIN ST., ALHAMBRA, CALIFORNIA
BY: *Wanda B. Hedlund*
REG. C. E. No. 14973



NOTE: NUMBERS IN CIRCLES INDICATE PAGE NUMBERS
INDEX MAP
SCALE: 1"=600'
P.C. 9549 TRACT NO. 33032

NO CONNECTION FOR THE DISPOSAL OF INDUSTRIAL WASTES SHALL BE MADE TO SEWERS SHOWN ON THESE DRAWINGS UNTIL A PERMIT FOR INDUSTRIAL WASTE WATER DISCHARGE HAS BEEN ISSUED BY THE SANITATION DISTRICTS FOR SAID CONNECTION.

BEFORE BREAKING INTO OR CONSTRUCTION ON A COUNTY SANITATION DISTRICT SEWER AND PRIOR TO FINAL ACCEPTANCE OF THE PROJECT SANITATION DISTRICT INSPECTOR SHALL BE NOTIFIED BY PHONE 962-8695, SO THAT REQUIRED INSPECTION CAN BE MADE.

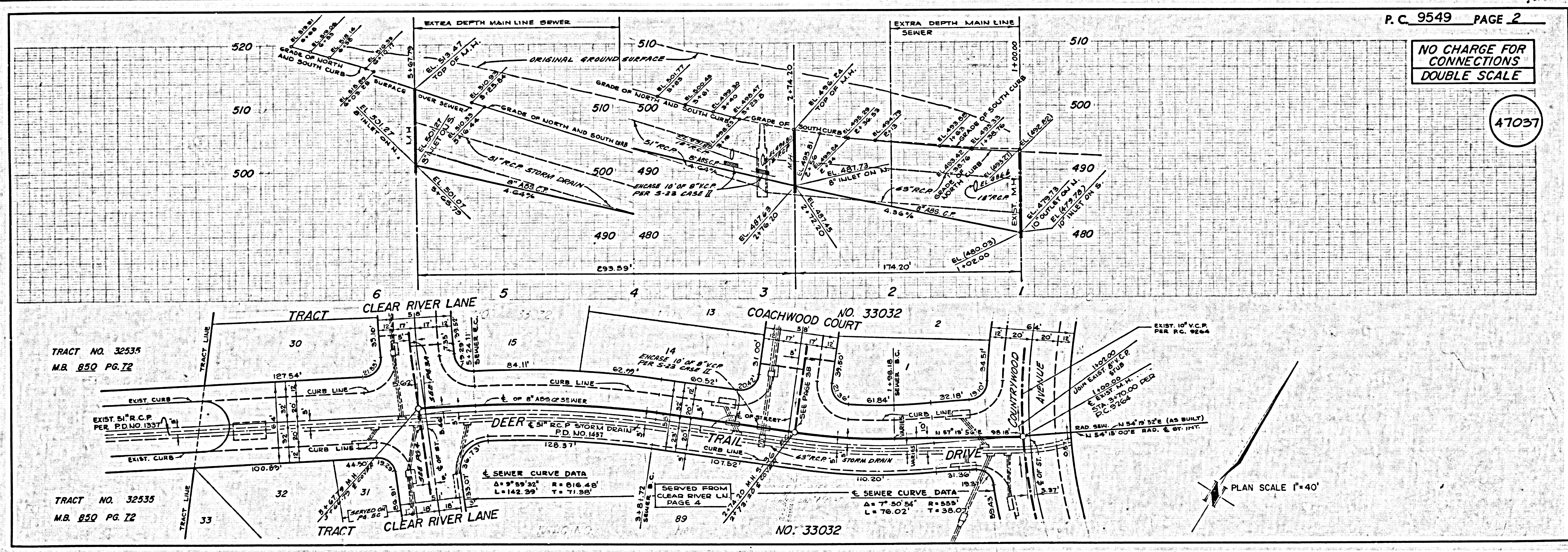
CONSTRUCTION NOTES:

- WORK SHALL BE CONSTRUCTED ACCORDING TO THE STANDARD SPECIFICATIONS FOR PUBLIC WORKS CONSTRUCTION 1976 EDITION AND COUNTY ENGINEER SPECIAL PROVISIONS FOR THE CONSTRUCTION OF SANITARY SEWERS DATED DECEMBER 31, 1976 AND SHALL BE PROSECUTED ONLY IN THE PRESENCE OF THE COUNTY ENGINEER.
- THE CONTRACTOR SHALL NOTIFY THE ENVIRONMENTAL DEVELOPMENT DIVISION (R18) 578-7283 AT LEAST TWENTY-FOUR HOURS BEFORE STARTING ANY WORK UNDER THIS CONTRACT.
- HOUSE LATERALS TO BE CONSTRUCTED WITH INVERTS AT PROPERTY LINE 4 FEET BELOW CURB GRADE EXCEPT AS NOTED.
- IF A POWER POLE IS WITHIN THREE FEET OF THE SEWER, THE SEWER SHALL BE ENCASED, PER S-23, CASE II, TWO FEET ON EACH SIDE FROM THE POINT OF INTERFERENCE.
- IF DURING THE COURSE OF CONSTRUCTION IT IS DETERMINED THAT THERE IS LESS THAN FOUR FEET OF COVER OVER THE TOP OF A MAIN LINE OR HOUSE LATERAL V.C.P. SEWER WHICH IS NOT INDICATED ON THE PLANS, THE PIPE SHALL BE ENCASED PER S-23, CASE II UNLESS OTHERWISE APPROVED BY THE COUNTY ENGINEER.
- ALL JOINTS BETWEEN CAST IRON PIPE AND VITRIFIED CLAY PIPE SHALL BE MADE WITH A RUBBER SLEEVE JOINT, TYPE "C" OR "B", WITHIN MISHING IF NECESSARY PER STANDARD SPECIFICATIONS, SECTION 308-2.
- SEWERS TO BE TESTED FOR LEAKAGE PER SECTION 306-1.6 OF THE STANDARD SPECIFICATIONS AND SPECIAL PROVISIONS.
- RESURFACE ALL TRENCHES WITHIN PAVED AREAS TO MEET L.A. COUNTY ROAD DEPT. OR CALIFORNIA STATE HIGHWAY REQUIREMENTS IN ACCORDANCE WITH PERMITS.
- FULL COMPLIANCE WITH SECTION 306-13.6 OF THE SPECIAL PROVISIONS WILL BE REQUIRED FOR BACKFILL IN STREETS. CERTIFICATION OF BACKFILL COMPACTION AND SAND EQUIVALENTS BY A QUALIFIED, REGISTERED TESTING LABORATORY SHALL BE PROVIDED BY THE PERMITEE PRIOR TO THE ISSUANCE OF A CERTIFICATE OF PARTIAL ACCEPTANCE.

THE FOLLOWING LATEST REVISED STANDARD PLANS ON FILE IN THE OFFICE OF THE COUNTY ENGINEER SHALL APPLY IN THE CONSTRUCTION OF THIS PROJECT.

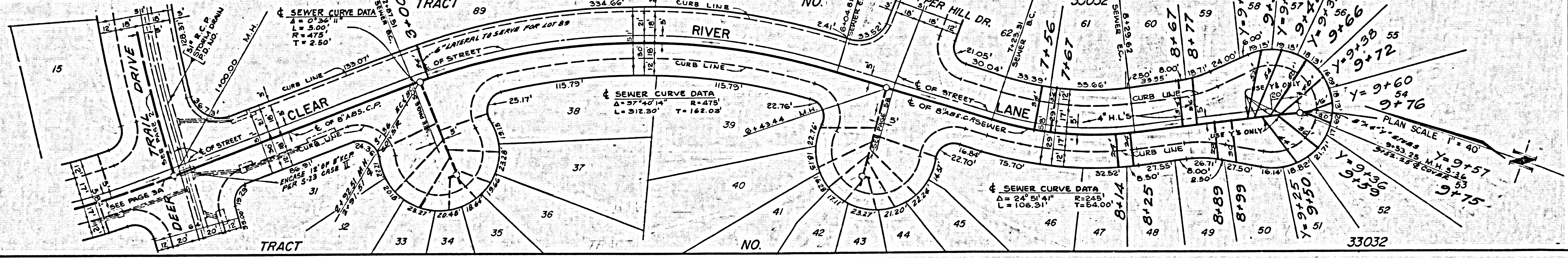
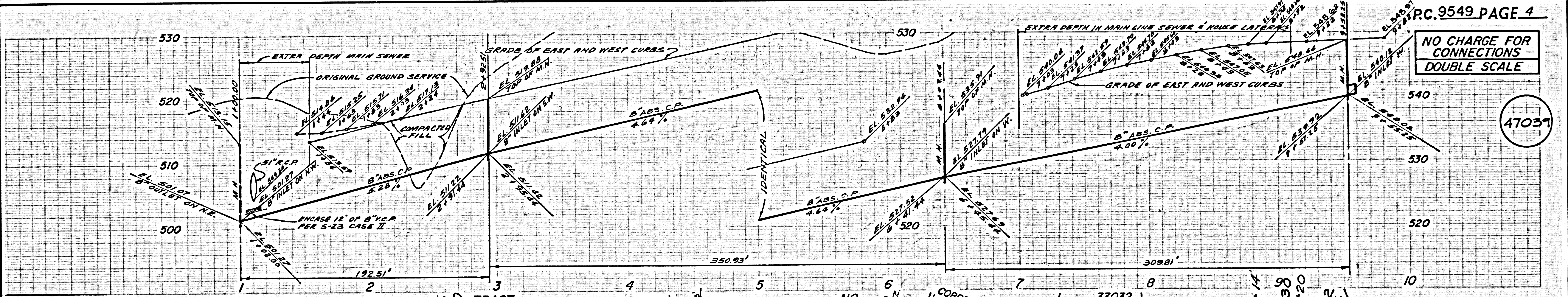
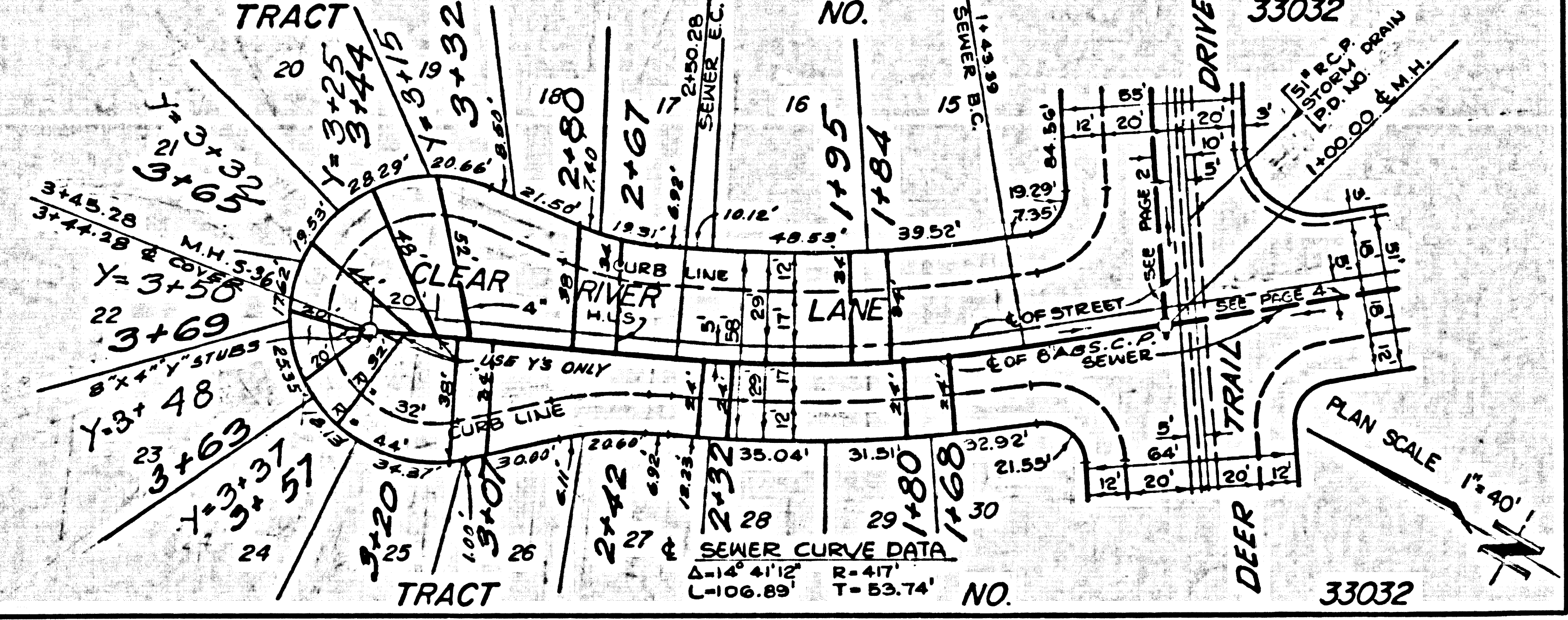
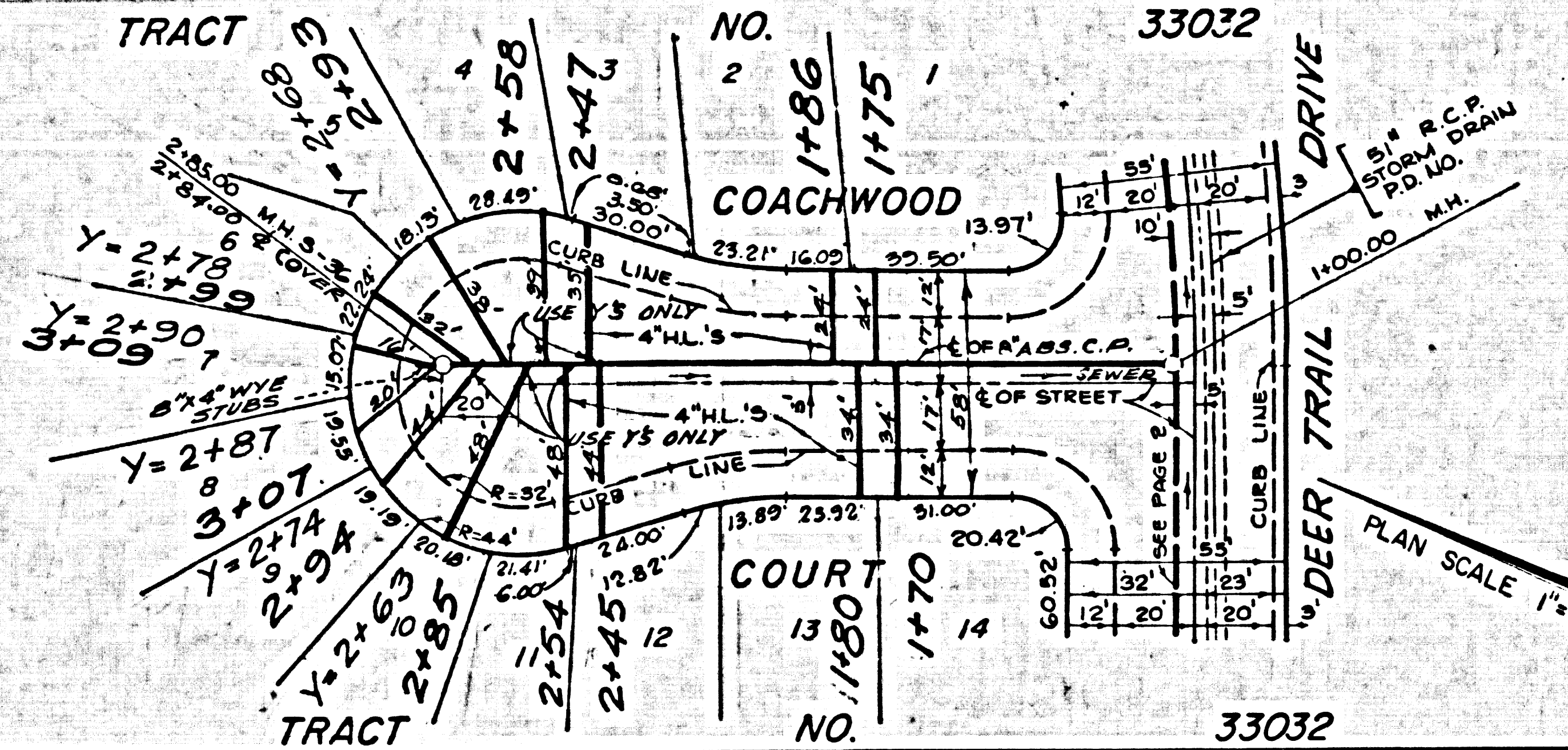
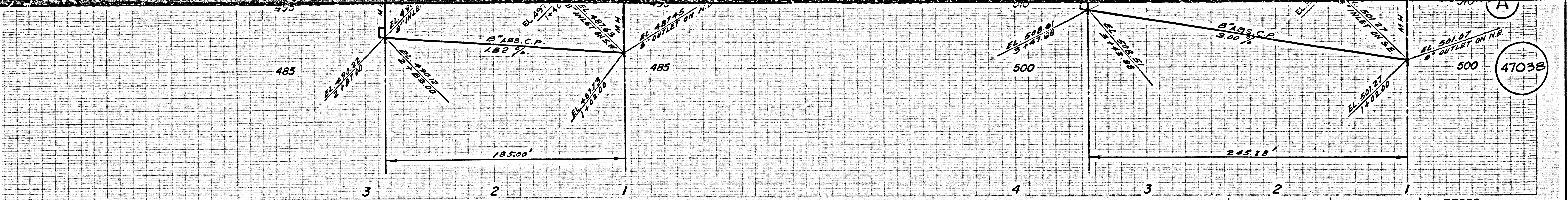
LEADER	5-1
MINIMUM PUBLIC SAFETY REQUIREMENTS	5-2
BRICK MANHOLE	5-3
STANDARD MANHOLE STEP	5-17
BEDDING FOR SEWER PIPE	5-21
CRADLING AND ENCASEMENT	5-23
WYE OR TEE SUPPORT	5-26
ALLOWABLE TRENCH WIDTHS	5-28
LOCKING MANHOLE FRAME AND COVER	5-36
NON-REINFORCED PRECAST CONCRETE MANHOLE	5-38

COUNTY OF LOS ANGELES, CALIFORNIA
STEPHEN J. KOONCE COUNTY ENGINEER JOHN D. PARKHURST, CHIEF ENGINEER
APPROVED *Sam Miller* 11/13/78 APPROVED *John R. De...* 11/13/78
BAR DIMAS REGIONAL ENGINEER OFFICE ENGINEER
CHECKED *Bernard J. Valdez* 11/13/78
REG. C. E. NO. 10653
LA PUENTE BLDG. DIST. 2.0 I.N. 0358.02



NO CHARGE FOR CONNECTIONS
DOUBLE SCALE

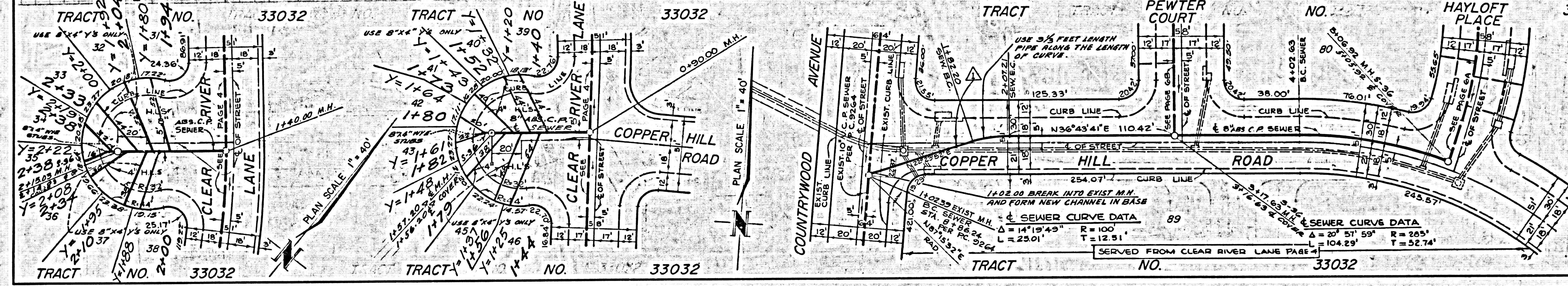
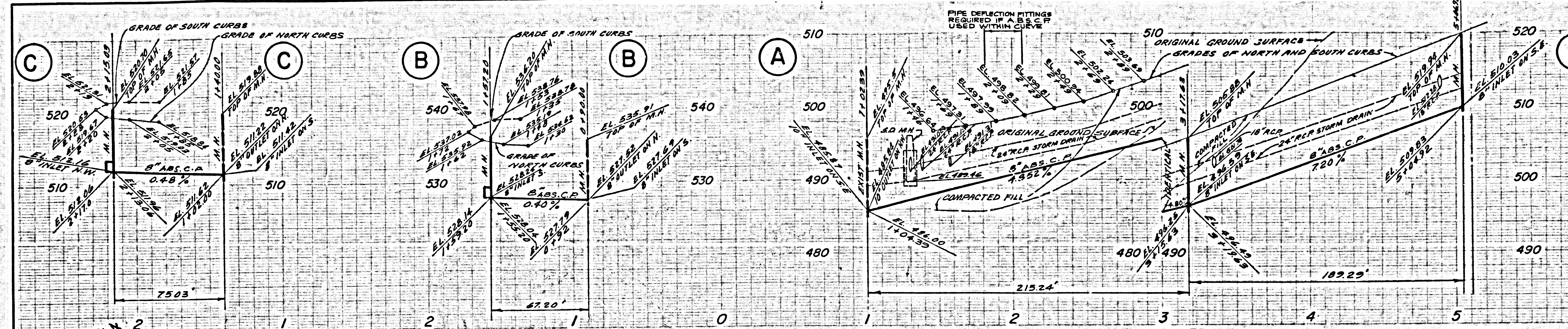
PLAN SCALE 1"=40'



L.A. COUNTY SEWER SHEET NO. 8 SOUTHERN CALIFORNIA BLUEPRINT CO. 7-77

NO CHARGE FOR CONNECTIONS
DOUBLE SCALE

47040



NO CHARGE FOR CONNECTIONS
DOUBLE SCALE

47041

