

TRACT NO 33535  
**PRIVATE CONTRACT NO. 9552**

W.S. 90, D-1  
 2 SHEET, 2 PAGE  
 SCALE: VERT. 1" = 4' HORIZ. 1" = 40'  
 JUNE 8, 1978  
 PREPARED IN THE OFFICES OF  
**CROWN ENGINEERING & SURVEYING CORP.**  
 18455 BURBANK BLVD. TARZANA, CA. 91356  
 BY: *[Signature]*  
 REG. C.E. NO. 8758

41874

THE FOLLOWING LATEST REVISED STANDARD PLANS ON FILE IN THE OFFICE OF THE COUNTY ENGINEER SHALL APPLY IN THE CONSTRUCTION OF THIS PROJECT.

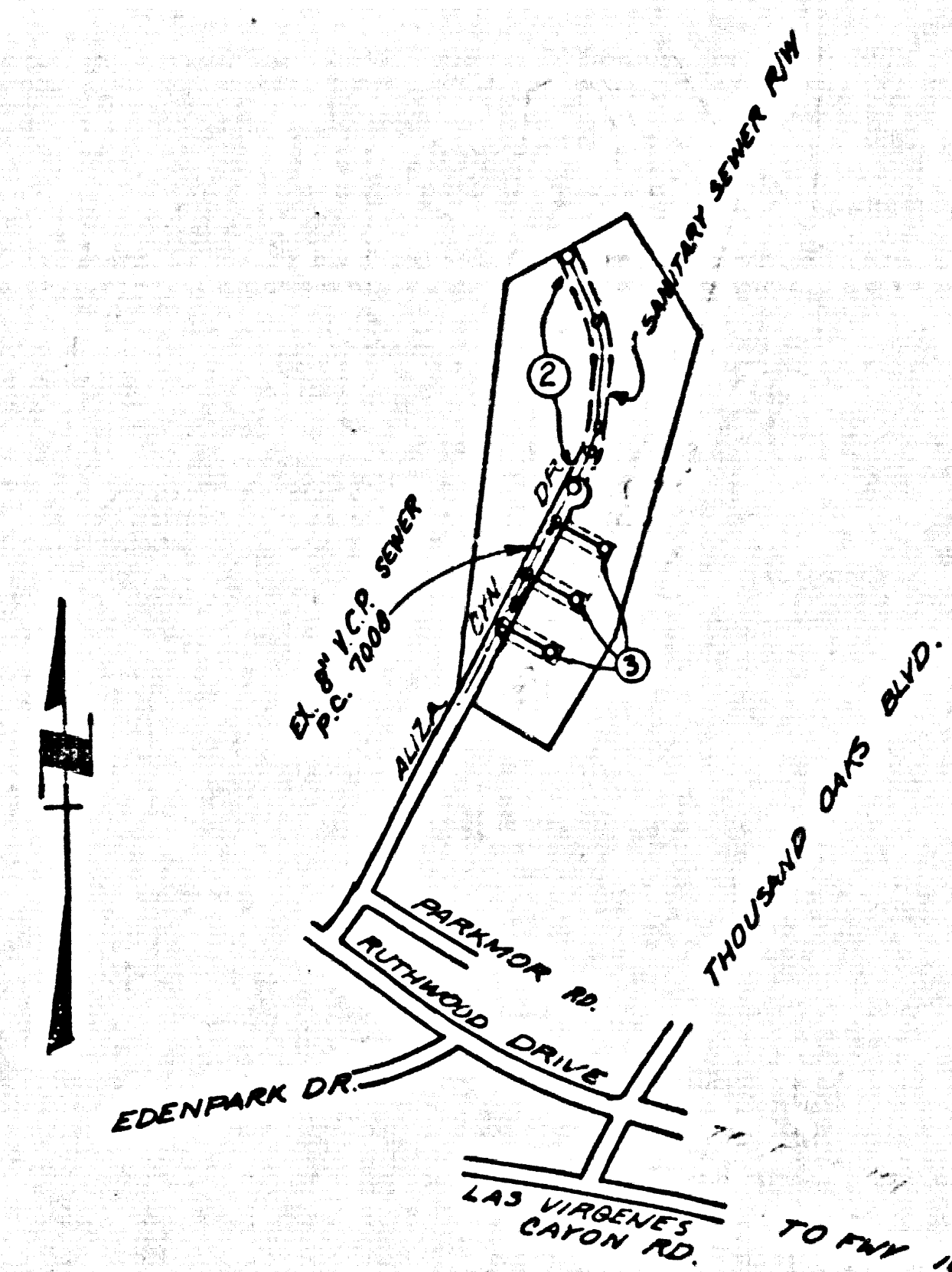
MINIMUM PUBLIC SAFETY REQUIREMENTS	8-3
BRICK MANHOLE	8-7
STANDARD MANHOLE STEP	8-7
REINFORCING FOR SEWER PIPE	8-7
CHASING AND ENCLOSURE	8-38
PIPE OR THE SUPPORT	8-38
ALLOWABLE TRENCH WIDTHS	8-38
LOCKING MANHOLE FRAMES AND COVERS	8-38
NON-REINFORCED PRECAST CONCRETE MANHOLE	8-38
SADDLE	8-38

COUNTY OF LOS ANGELES, CALIFORNIA  
 STEPHEN J. KOONCE, COUNTY ENGINEER  
 LAS VIRGENES MUNICIPAL WATER DISTRICT  
 APPROVED *[Signature]* 10-31-78  
 CHECKED *[Signature]* 10/31/78  
 REG. C.E. NO. 16483  
 CALABAZAS BLDG. DIST. 21

- GENERAL NOTES:**
1. ELEVATIONS ARE IN FEET ABOVE U.S.C. & G.S. SEA LEVEL DATUM OF 1929.
  2. NO REVISIONS SHALL BE MADE IN THESE PLANS WITHOUT THE APPROVAL OF THE COUNTY ENGINEER.
  3. NO DIMENSIONS SHALL BE SHOWN ON PLANS AND PROFILES. GRADE POINTS ARE TO TOP OF CURBS UNLESS OTHERWISE NOTED.
  4. GRADES TO WHICH THIS IMPROVEMENT IS TO BE CONSTRUCTED ARE SHOWN ON PLANS AND PROFILES. GRADE POINTS ARE TO TOP OF CURBS UNLESS OTHERWISE NOTED. AT ALL POINTS BETWEEN DESIGNATED GRADE POINTS THE GRADE SHALL BE ESTABLISHED SO AS TO CONFORM TO A STRAIGHT LINE DRAWN BETWEEN SAID DESIGNATED POINTS.
  5. THE PRIVATE ENGINEER SHALL FURNISH THE COUNTY ENGINEER WITH GRADE SHEETS AND STATIONINGS FOR ALL HOUSE LATERALS AND "T" OR "Y" BRANCHES AND SHALL PROVIDE GRADES FOR THEM AT THEIR POINTS OF CONNECTION WITH THE MAIN LINE SEWER MAINS. ALL HOUSE LATERALS SHALL BE CONSTRUCTED IN A STRAIGHT ALIGNMENT AT RIGHT ANGLES FROM THE MAIN LINE SEWER MAINS AS SHOWN ON THE PLANS. HOUSE LATERALS FROM CHIMNEYS SHALL NOT HAVE AN ANGLE OF LESS THAN 45° WITH THE MAIN LINE SEWER. ANY CHANGES IN ALIGNMENT SHALL BE REQUESTED BY WRITING BY THE PRIVATE ENGINEER.
  6. THE PRIVATE ENGINEER SHALL FURNISH THE HOUSE LATERAL SEWER AT THE PROPERTY LINE BELOW THE TOP OF CURB ELEVATION FOR EACH HOUSE LATERAL ON THE GRADE SHEET.
  7. BEFORE WORK CAN BE STARTED, THE CONTRACTOR SHALL OBTAIN A PERMIT TO EXCAVATE IN COUNTY STREETS FROM THE L.A. COUNTY ROAD DEPT., DISTRICT OFFICE NO. 3 AND PAY A FEE TO THE COUNTY ENGINEER, \$50.00 PER 100' OF STREET.
  8. IF WORK IS TO BE DONE IN A STREET HIGHWAY, A PERMIT MUST BE OBTAINED FROM THE STATE OF CALIFORNIA, DIVISION OF HIGHWAYS, 120 SOUTH BRIDGE STREET, LOS ANGELES, CALIFORNIA.
  9. APPROVAL OF THIS PLAN BY THE COUNTY OF LOS ANGELES DOES NOT CONSTITUTE A REPRESENTATION AS TO THE ACCURACY OF THE LOCATION OF OR THE EXISTENCE OR NON-EXISTENCE OF ANY UNDERGROUND UTILITY PIPE, OR STRUCTURE WITHIN THE LIMITS OF THIS PROJECT. THE NOTE APPLIES TO ALL PAGES.
  10. REFER TO SECTION 7.18.01 OF THE STANDARD SPECIFICATIONS, REGARDING SURVEY CONTROL.
  11. THE UNDERGROUND UTILITY COMPANIES WITHIN THE LIMIT OF THIS PROJECT ARE AS FOLLOWS: NONE.

- CONSTRUCTION NOTES:**
1. WORK SHALL BE CONSTRUCTED ACCORDING TO THE STANDARD SPECIFICATIONS FOR PUBLIC WORKS CONSTRUCTION (TYPE SECTION) SEPT. 21, 1976 AND COUNTY ENGINEER SPECIAL PROVISIONS FOR THE CONSTRUCTION OF SANITARY SEWERS DATED JUNE 1, 1978.
  2. THE CONTRACTOR SHALL NOTIFY THE ENG. DIV. DIVISION OF TELEPHONE, (916) 738-2156, AT LEAST TWENTY-FOUR HOURS BEFORE STARTING ANY WORK UNDER THIS CONTRACT.
  3. HOUSE LATERALS TO BE CONSTRUCTED WITHIN HIGHWAYS AT PROPERTY LINE & FEET BELOW CURB GRADE EXCEPT AS NOTED.
  4. WYE OR TE BRANCHES MAY BE USED FOR CONNECTIONS TO MANHOLE SEWERS EXCEPT AS NOTED.
  5. ALL STRUCTURES SHALL BE EITHER BRICK MANHOLES PER 8-3 OR PRECAST CONCRETE MANHOLES PER 8-38, EXCEPT AS NOTED.
  6. PROVIDE STAKES ON THE PROPERTY LINE OR PROPERTY LINES PRODUCED AT RIGHT ANGLES TO THE SEWER LINE AT THE CENTER LINE OF EACH MANHOLE.
  7. MANHOLES TO BE UNIMPROVED HEIGHTS OF WAY TO BE 36 INCHES ABOVE FINISHED GRADE.
  8. VENTURED CLAY PIPE JOINTS SHALL BE TYPE "B", "F", OR "G" PER STANDARD SPECIFICATIONS SECTION 306-3.
  9. IF A POWER POLE IS WITHIN THREE FEET OF THE SEWER, THE SEWER SHALL BE ENCASED PER 8-38, PART 2 TWO FEET ON EACH SIDE FROM THE POINT OF INTERFERENCE.
  10. IF DURING THE COURSE OF CONSTRUCTION IT IS DETERMINED THAT THERE IS LESS THAN FOUR FEET OF COVER OVER THE TOP OF A MAIN LINE OR HOUSE LATERAL V.C.P. SEWER WHICH IS NOT INDICATED ON THE PLANS, THE PIPE SHALL BE ENCASED PER 8-38, CASE 1 UNLESS OTHERWISE APPROVED BY THE COUNTY ENGINEER.
  11. ALL JOINTS BETWEEN CAST IRON PIPE AND VENTURED CLAY PIPE SHALL BE MADE WITH A RUBBER SLEEVE JOINT, TYPE "C" OR "D", FIFTH EDITION, PER STANDARD SPECIFICATIONS SECTION 306-3.
  12. SEWERS TO BE INSTALLED FOR STREETS PER SECTION 306-3.6 OF THE STANDARD SPECIFICATIONS AND SPECIAL PROVISIONS.
  13. REINFORCE ALL TRENCHES WITHIN PAVED AREAS TO MEET L.A. COUNTY ROAD DEPT. OR CALIFORNIA STATE HIGHWAY REQUIREMENTS IN ACCORDANCE WITH PERMITS.
  14. FULL COMPLIANCE WITH SECTION 306-3.6 OF THE SPECIAL PROVISIONS WILL BE REQUIRED FOR BANKS IN STREETS. CERTIFICATION OF COMPLETION SHALL BE PROVIDED BY A QUALIFIED REGISTERED TESTER. LABORATORY EQUIVALENTS BY A QUALIFIED REGISTERED TESTER SHALL BE PROVIDED PRIOR TO THE ISSUANCE OF A CERTIFICATE OF PARTIAL ACCEPTANCE.
  15. THE CONTRACTOR SHALL FURNISH A Certificate of Workers Compensation Insurance and Liability Insurance WITH THE COUNTY ENGINEER.

B.M. BY 5047 ELEV. 792.468  
 R.D.B.M. Tag in C.R. 3 FT. N.B.C.P.  
 62 FT. N + 42 FT. E of Int. Las  
 Virgenes Cyn. Rd. + Quintana St.  
 Mall. QUAD. 19.72

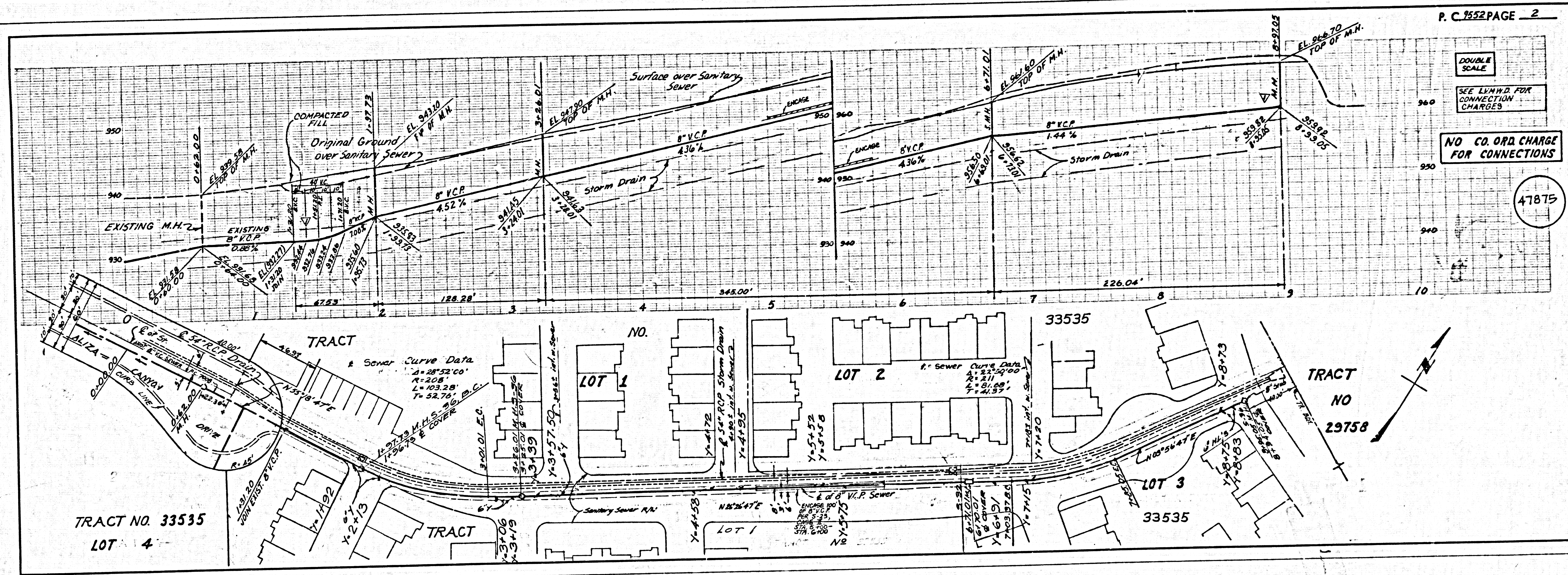


NOTE: NUMBER IN CIRCLE INDICATES PAGE NUMBER.

INDEX MAP  
 Scale 1" = 600'  
 Tract No. 33535

REVISION NO. 1 DATE 3-20-80  
 RAISE MAINLINE SEWER FROM STA 1+31.20 TO STA 8+51.00 (P. 3)  
 APPROVED *[Signature]* 3/21/80  
 OFFICE OF C.E. ENGINEER

REVISION NO. 2 DATE 7-28-80  
 RUNNER STA: ON M.H. ON ROW LINE "C" FROM 1+45.00 TO 1+68.00 (P. 3)  
 APPROVED *[Signature]* 7/28/80  
 OFFICE OF C.E. ENGINEER

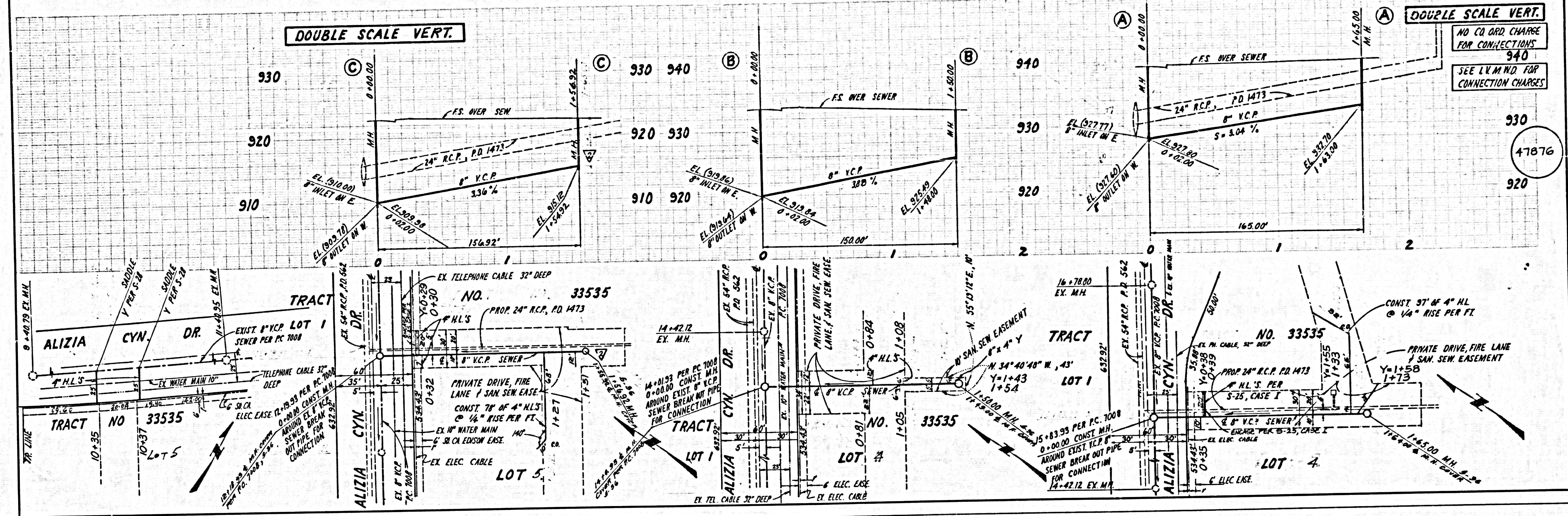


DOUBLE SCALE

SEE LHM.D FOR CONNECTION CHARGES

NO CO. ORD. CHARGE FOR CONNECTIONS

41875



DOUBLE SCALE VERT.  
 NO CO ORD CHARGE FOR CONNECTIONS 940  
 SEE LV M AND FOR CONNECTION CHARGES