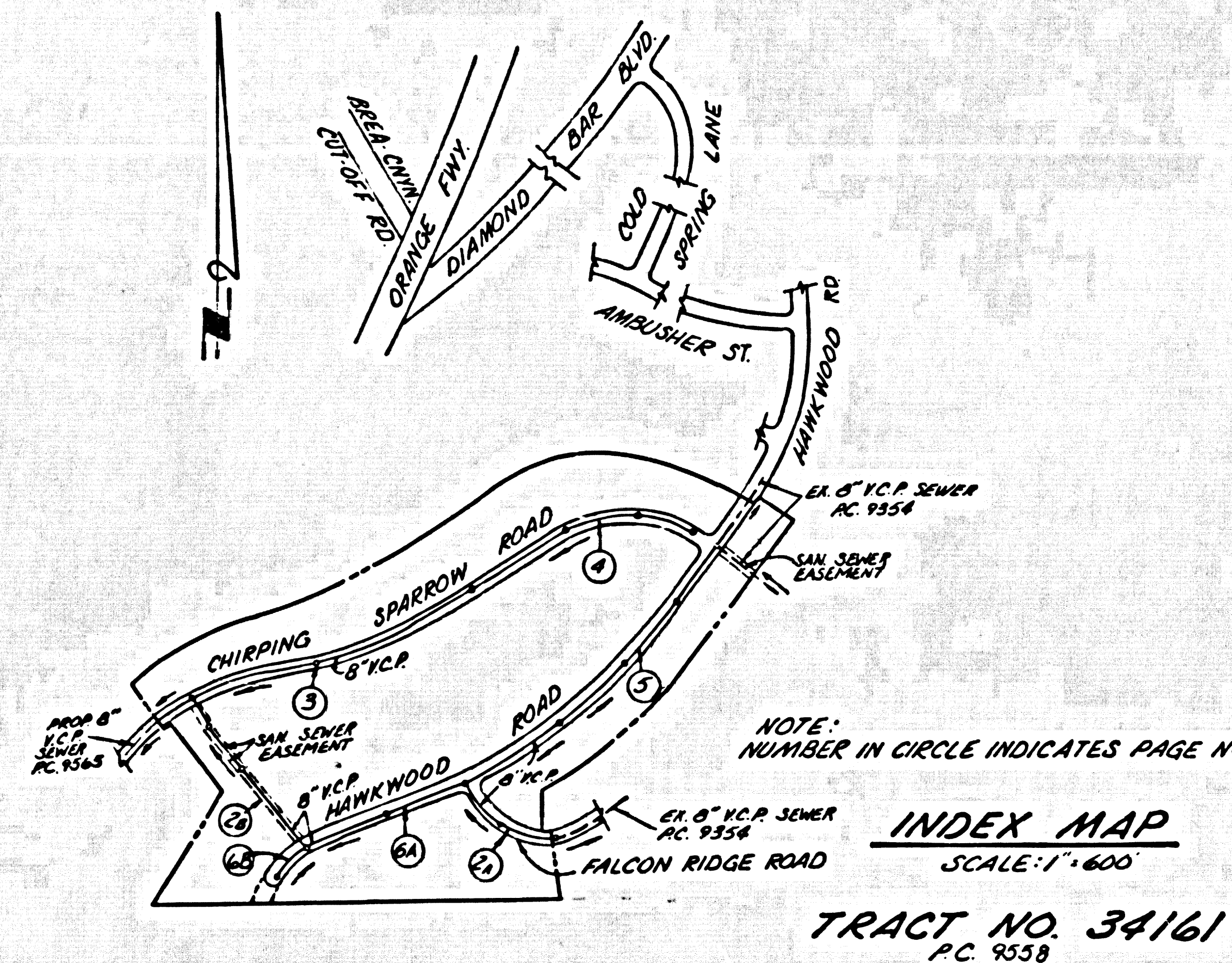


B.M. CG 3907 ELEV. 794.625  
 R.O.B.M. TAG IN CA 38 FT NLY B.C.R.  
 97 FT NLY & 40 WLY @ INT DIAMOND  
 BAR BLVD & COLD SPRING LANE.  
 OTTERBEIN QUAD. 1975

REVISION NO.  $\Delta$  DATE 2-12-79  
 REVISED VERTICAL CURVE & RELOCATE MANHOLE  
 FROM STA. 3+66.00 & REVIDED GRADES BETWEEN  
 STA. 0+70.00 & 3+78.60 - PAGE 2.  
 APPROVED *Jack N. Miller* 2/13/79  
 OFFICE OF COUNTY ENGINEER DATE.

DOUBLE SCALE  
 GENERAL NOTES:  
 1. ELEVATIONS ARE IN FEET ABOVE U.S.C. & G.S. SEA LEVEL DATUM OF 1929.  
 2. NO REVISIONS SHALL BE MADE IN THESE PLANS WITHOUT THE APPROVAL OF THE COUNTY ENGINEER.  
 3. NO REPRESENTATIVE OF THE COUNTY ENGINEER WILL SURVEY OR LAY OUT ANY PORTION OF THE WORK.  
 4. GRADES TO WHICH THIS IMPROVEMENT IS TO BE CONSTRUCTED ARE SHOWN ON PLANS AND PROFILES. GRADE POINTS FOR TOP OF CURBS, CENTER LINE OF STREETS, OR CENTER LINE OF ALLEYS ARE SHOWN BY CIRCLES ON PROFILES. AT ALL POINTS BETWEEN DESIGNATED POINTS THE GRADE SHALL BE ESTABLISHED SO AS TO CONFORM TO A STRAIGHT LINE DRAWN BETWEEN SAID DESIGNATED POINTS.  
 5. THE PRIVATE ENGINEER SHALL FURNISH THE COUNTY ENGINEER WITH GRADE SHEETS AND STATIONING FOR ALL HOUSE LATERALS AND "T" OR "Y" BRANCHES AND SHALL PROVIDE STAKES FOR THEM AT THEIR PROPER LOCATIONS WITH STATIONING PLAINLY MARKED. ALL HOUSE LATERALS SHALL BE CONSTRUCTED IN A STRAIGHT ALIGNMENT AT RIGHT ANGLES FROM THE MAIN LINE SEWER EXCEPT AS SHOWN ON THE PLANS. HOUSE LATERALS FROM CHIMNEYS SHALL NOT HAVE AN ANGLE OF LESS THAN 45° WITH THE MAIN LINE SEWER. ANY CHANGE IN ALIGNMENT SHALL BE REQUESTED BY WRITING BY THE PRIVATE ENGINEER.  
 6. THE PRIVATE ENGINEER SHALL FURNISH THE HOUSE LATERAL DEPTH AT THE PROPERTY LINE BELOW THE TOP OF CURB ELEVATION FOR EACH HOUSE LATERAL ON THE GRADE SHEET.  
 7. BEFORE WORK CAN BE STARTED, THE CONTRACTOR MUST OBTAIN A PERMIT TO EXCAVATE IN COUNTY STREETS FROM THE L.A. COUNTY ROAD DEPT., DISTRICT CHIEF NO. 11 AND PAY A FEE TO THE COUNTY ENGINEER, 200 S. BROADWAY, SAN DIMAS, CALIF. REGIONAL OFFICE TO COVER THE COST OF CONSTRUCTION INSPECTION AND RECORD PLANS.  
 8. IF WORK IS TO BE DONE IN A STATE HIGHWAY, A PERMIT MUST BE OBTAINED FROM THE STATE OF CALIFORNIA, DIVISION OF HIGHWAYS, 136 SOUTH SPRING STREET, LOS ANGELES, CALIFORNIA.  
 9. APPROVAL OF THIS PLAN BY THE COUNTY OF LOS ANGELES DOES NOT CONSTITUTE A REPRESENTATION AS TO THE LOCATION OR OF THE EXISTENCE OR NON-EXISTENCE OF ANY UNDERGROUND UTILITY PIPE, OR STRUCTURE WITHIN THE LIMITS OF THIS PROJECT. THIS NOTE APPLIES TO ALL PAGES.  
 10. REFER TO SECTION 7-10.1.3 OF THE STANDARD SPECIFICATIONS, REGARDING SAFETY ORDERS.  
 11. PRIOR TO ISSUANCE OF THE REQUIRED SEWER CONSTRUCTION PERMIT BY THE COUNTY ENGINEER, THE CONTRACTOR SHALL OBTAIN A PERMIT TO EXCAVATE FROM THE STATE OF CALIFORNIA, DEPARTMENT OF INDUSTRIAL RELATIONS, DIVISION OF INDUSTRIAL SAFETY, AND SHALL FILE A CERTIFICATE OF WORKERS COMPENSATION INSURANCE AND LIABILITY INSURANCE WITH THE COUNTY ENGINEER.

PROFILE, ALIGNMENT AND GRADE OF  
**SANITARY SEWERS** PAGE 1  
 TO BE CONSTRUCTED IN  
**TRACT NO. 34161**  
**PRIVATE CONTRACT NO. 9558**  
 W.S. 39-B,5  
 3 SHEETS, 6 PAGES (47378)  
 SCALE: VERT. 1"=4' JUNE, 1978  
 HORIZ. 1"=40'  
 PREPARED IN THE OFFICES OF  
**K.T.M. CONSOLIDATED, INC.**  
 2301 CAMPUS DRIVE  
 IRVINE, CA. 92714  
 BY: *Jack N. Miller* 4-14-78  
 REG. C. E. No. 23462



BEFORE BREAKING INTO OR CONSTRUCTION ON A COUNTY SCOUTING DISTRICT STREET AND PRIOR TO FINAL ACCEPTANCE OF THE PROJECT SANITATION DISTRICT INSPECTION SHALL BE NOTIFIED BY PHONE 962-8000 SO THAT REQUIRED INSPECTION CAN BE MADE.  
 NO CONNECTION FOR THE DISPOSAL OF INDUSTRIAL WASTES SHALL BE MADE TO SEWERS SHOWN ON THE PLAN UNTIL A PERMIT FOR INDUSTRIAL WASTE WATER DISCHARGE HAS BEEN ISSUED BY THE SANITATION DISTRICTS PWS DIVISION CONNECTION

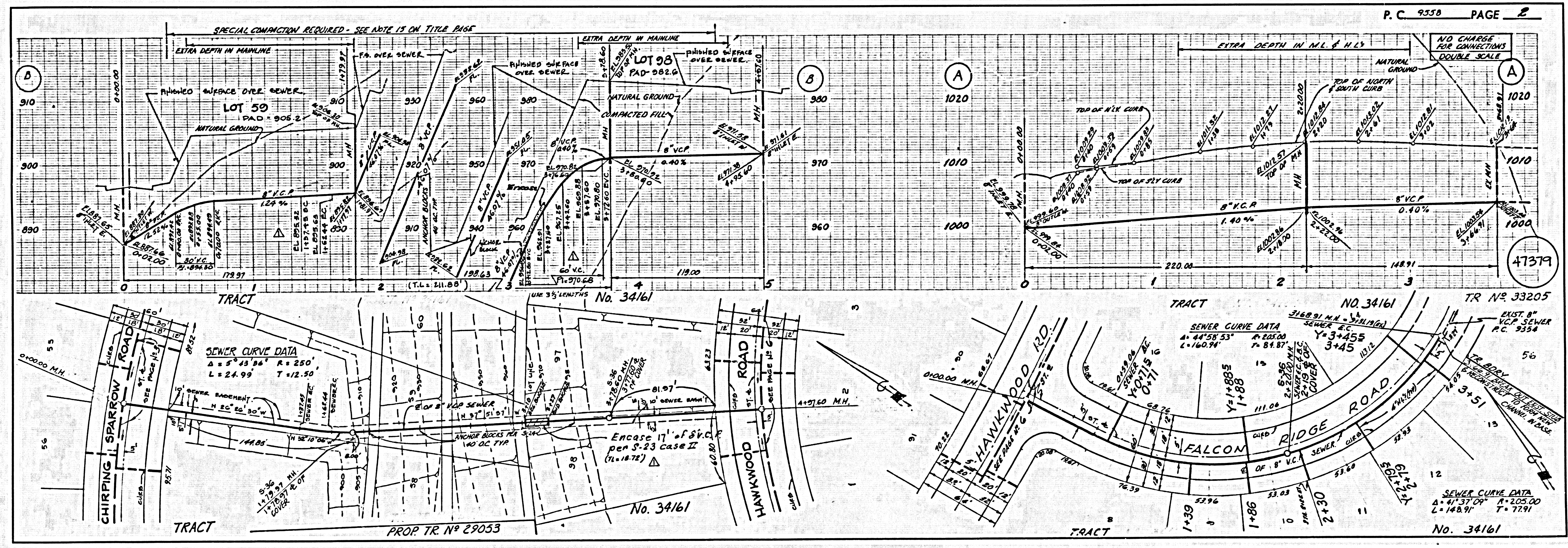
ISSUE NO PERMITS FOR LOTS 20-32 AND 79-85 UNTIL P.C. 9554 IS ACCEPTED.  
 ISSUE NO PERMITS FOR LOTS 1-9, 33-78 AND 86-100 UNTIL P.C. 9565 IS ACCEPTED.

CONSTRUCTION NOTES:  
 1. WORK SHALL BE CONSTRUCTED ACCORDING TO THE STANDARD SPECIFICATIONS FOR PUBLIC WORKS CONSTRUCTION (1978 EDITION) AND COUNTY ENGINEER SPECIAL PROVISIONS FOR THE CONSTRUCTION OF SANITARY SEWERS DATED SEPTEMBER 21, 1976.  
 2. THE CONTRACTOR SHALL NOTIFY THE ENVIRONMENTAL DEVELOPMENT DIVISION, PHONE (818) 904-7283 AT LEAST TWENTY-FOUR HOURS BEFORE STARTING ANY WORK UNDER THIS CONTRACT.  
 3. HOUSE LATERALS TO BE CONSTRUCTED WITH INVERTS AT PROPERTY LINE & FEET BELOW CURB GRADE EXCEPT AS NOTED.  
 4. TYPE OF THE BRANCHES MAY BE USED FOR CONNECTIONS TO MAINLINE SEWERS EXCEPT AS NOTED.  
 5. ALL STRUCTURES SHALL BE EITHER BRICK MANHOLES PER S-36, EXCEPT AS NOTED, OR PRECAST CONCRETE MANHOLES PER S-23, CASE II.  
 6. PROVIDE STAKES ON THE PROPERTY LINE OR PROPERTY LINES PRODUCED AT RIGHT ANGLES TO THE SEWER LINE AT THE CENTER LINE OF EACH MANHOLE.  
 7. MANHOLE TOPS IN UNIMPROVED RIGHTS OF WAY TO BE SIX INCHES ABOVE FINISHED GRADE.  
 8. VITRIFIED CLAY PIPE JOINTS SHALL BE TYPE "T", "F", OR "D" PER STANDARD SPECIFICATIONS SECTION 306-2.  
 9. IF A POWER POLE IS WITHIN THREE FEET OF THE SEWER, THE SEWER SHALL BE ENCASED, PER S-23, CASE II, TWO FEET ON EACH SIDE FROM THE POINT OF INTERFERENCE.  
 10. IF DURING THE COURSE OF CONSTRUCTION IT IS DETERMINED THAT THERE IS LESS THAN FOUR FEET OF COVER OVER THE TOP OF A MAIN LINE OR HOUSE LATERAL V.C.P. SEWER WHICH IS NOT INDICATED ON THE PLANS, THE PIPE SHALL BE ENCASED PER S-23, CASE II UNLESS OTHERWISE APPROVED BY THE COUNTY ENGINEER.  
 11. ALL JOINTS BETWEEN CAST IRON PIPE AND VITRIFIED CLAY PIPE SHALL BE MADE WITH A RUBBER SLEEVE JOINT, TYPE "C" OR "B", WITH BUSHING IF NECESSARY PER STANDARD SPECIFICATIONS, SECTION 306-2.  
 12. SEWERS TO BE TESTED FOR LEAKAGE PER SECTION 306-1.6 OF THE STANDARD SPECIFICATIONS AND SPECIAL PROVISIONS.  
 13. RESURFACE ALL TRENCHES WITHIN PAVED AREAS TO MEET L.A. COUNTY ROAD DEPT. OR CALIFORNIA STATE HIGHWAY REQUIREMENTS IN ACCORDANCE WITH PERMITS.  
 14. FULL COMPLIANCE WITH SECTION 306-1.5 OF THE SPECIAL PROVISIONS WILL BE REQUIRED FOR BACKFILL IN STREETS. CERTIFICATION OF BACKFILL COMPACTION AND SAND EQUIVALENTS BY A QUALIFIED, REGISTERED TESTING LABORATORY SHALL BE PROVIDED BY THE CONTRACTOR PRIOR TO THE ISSUANCE OF A CERTIFICATE OF PARTIAL ACCEPTANCE.  
 15. SPECIAL BACKFILL OR DESIGNATED BACKFILL SHALL BE USED FOR ALL TRENCHES PERMITTED BY THE BUILDING AND SAFETY DIVISION AND PERMITS OTHER THAN APPROVED SO AS TO ACHIEVE THE NATURAL OR FINISHED SURFACE GRADE AND MAINTAIN THE STRENGTH OF THE EXISTING PAVEMENT BY THE BUILDING AND SAFETY DIVISION.  
 16. ALL SAND TO BE REPLACED SHALL BE COMPACTED TO A MINIMUM OF 90% OF MAXIMUM DENSITY PER A.S.T.M. STANDARD METHOD OF TESTING D-1557-57T AS INDICATED. ACCEPTABLE CERTIFICATION OF SUCH COMPACTION SHALL BE SUBMITTED TO THE ENVIRONMENTAL DEVELOPMENT DIVISION.

THE FOLLOWING LATEST REVISED STANDARD PLANS ON FILE IN THE OFFICE OF THE COUNTY ENGINEER SHALL APPLY IN THE CONSTRUCTION OF THIS PROJECT:

LEGEND	8-1
MINIMUM PUBLIC SAFETY REQUIREMENTS	8-2
BRICK MANHOLE	8-3
STANDARD MANHOLE STEP	8-7
SEWING FOR SEWER PIPE	8-21
CRADLING AND ENCASING	8-22
PIPE ON THE SUPPORT	8-23
ALLOWABLE TRENCH WIDTHS	8-24
LOCKING MANHOLE FRAME AND COVER	8-26
NON-REINFORCED PRECAST CONCRETE MANHOLE	8-26

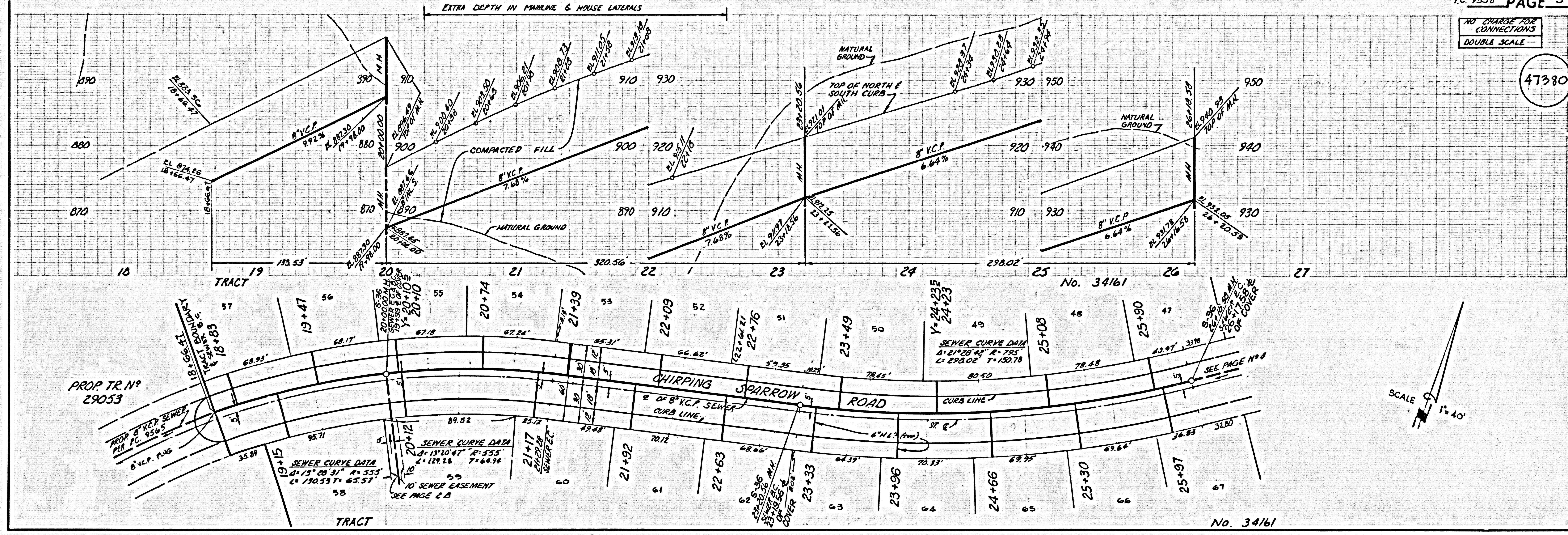
COUNTY OF LOS ANGELES, CALIFORNIA  
 STEPHEN J. ROONEY, COUNTY ENGINEER JOHN D. PARKHURST, CHIEF ENGINEER  
 APPROVED *Jack N. Miller* 11/20/78 APPROVED *John D. Parkhurst* 11/20/78  
 REGIONAL ENGINEER SEAT OFFICE ENGINEER  
 CHECKED *Edward S. Valdez* 11-24-78  
 REG. C.E. NO. 10653  
 SAN DIMAS BLDG. DIST. 10.00 J.N. 0358.02





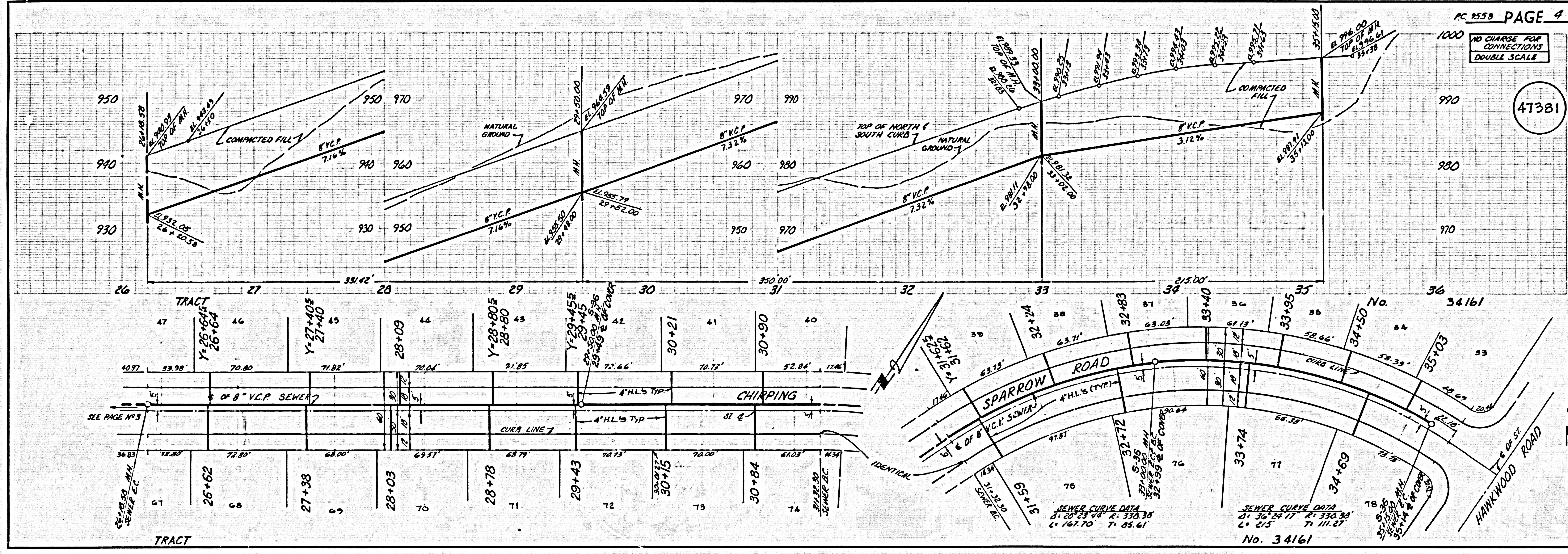
NO CHARGE FOR CONNECTIONS  
DOUBLE SCALE

47380



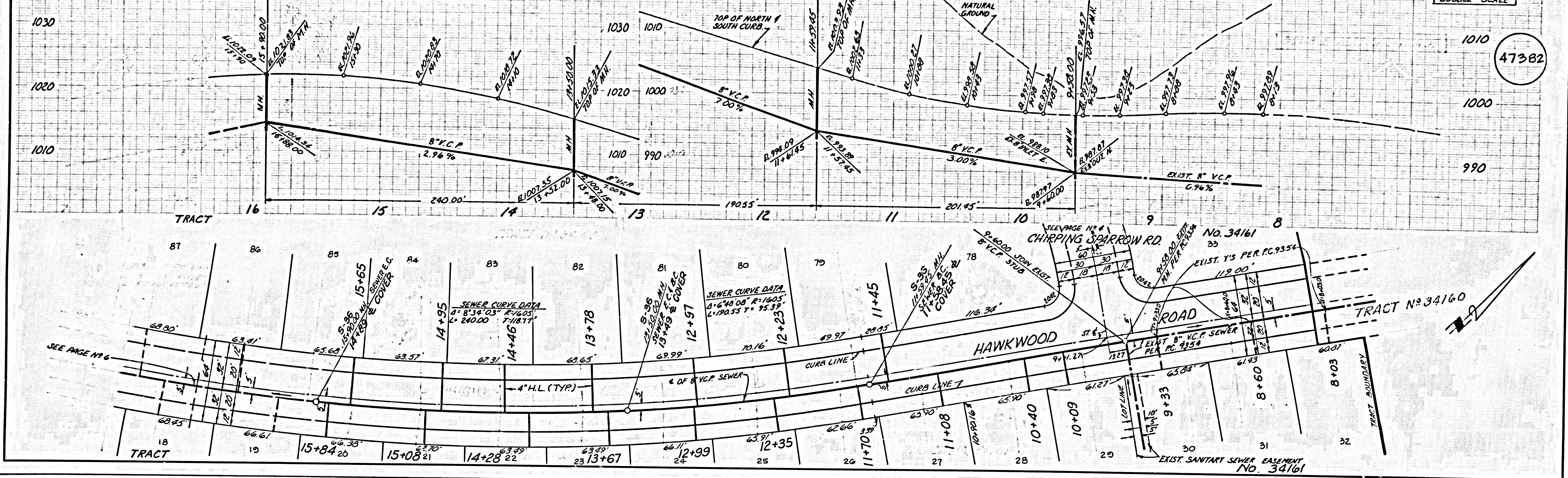
NO CHARGE FOR CONNECTIONS  
DOUBLE SCALE

47381





NO CHARGE FOR CONNECTIONS  
DOUBLE SCALE



NO CHARGE FOR CONNECTIONS  
DOUBLE SCALE

