

TO BE CONSTRUCTED IN

TRACT NO. 33099

PRIVATE CONTRACT NO. 9563

W.S. 62

3 SHEETS, 6 PAGES

SCALE: VERT. 1"=4' HORIZ. 1"=40' DEC, 1978

PREPARED IN THE OFFICES OF VTN LOS ANGELES 6010 VAN NUYS BLVD, VAN NUYS, CALIF.

By *Ludwick Carter* REG. C.E. NO. 7722

FOR LEGEND SEE PLAN NO. S-1

NOTE: GRADES TO WHICH THIS IMPROVEMENT IS TO BE CONSTRUCTED ARE SHOWN ON PLANS AND PROFILE. GRADE POINTS FOR TOP OF CURBS, CENTER LINE OF STREETS, OR CENTER LINE OF ALLEYS ARE SHOWN BY CIRCLES OR PROFILES AT ALL POINTS BETWEEN DESIGNATED POINTS THE GRADE SHALL BE ESTABLISHED SO AS TO CONFORM TO A STRAIGHT LINE DRAWN BETWEEN SAID DESIGNATED POINTS. ELEVATIONS ARE IN FEET ABOVE U.S.C. & G.S. SEA LEVEL DATUM OF 1929. THIS DRAWING AND THE DATA HEREON ARE HEREBY MADE A PART OF THE SPECIFICATIONS.

BEFORE WORK CAN BE STARTED THE CONTRACTOR MUST OBTAIN A PERMIT TO EXCAVATE IN COUNTY STREETS FROM THE L.A. COUNTY ROAD DEPT., DISTRICT OFFICE NO. 8, AND PAY A FEE TO THE COUNTY ENGINEER, ROOM 408, COUNTY ENGINEERING BUILDING, 550 S. VERMONT ST., LOS ANGELES, CALIF. APPROVAL OF THIS PLAN BY THE COUNTY OF LOS ANGELES DOES NOT CONSTITUTE A REPRESENTATION AS TO THE ACCURACY OF THE LOCATION OR THE EXISTENCE OR NON-EXISTENCE OF ANY UNDERGROUND UTILITY PIPE, OR STRUCTURE WITHIN THE LIMITS OF THIS PROJECT. THIS NOTE APPLIES TO ALL PAGES.

IF WORK IS TO BE DONE BY A STATE HIGHWAY, A PERMIT MUST BE OBTAINED FROM THE STATE OF CALIFORNIA, DIVISION OF HIGHWAY, 120 SOUTH SPRING STREET, LOS ANGELES, CALIFORNIA.

COUNTY OF LOS ANGELES, CALIFORNIA STEPHEN J. KOONCE, COUNTY ENGINEER WALTER H. GARRISON, CHIEF ENGINEER CO. SAN. DIST. NO. 22

APPROVED BY *L.K. Widen* 5/17/79 PER. ASSISE DIVISION ENGR. DATE APPROVED BY *Frank R. ...* 5/29/79 OFFICE ENGINEER

CHECKED BY *Ralph Paul ...* 5/17/79 PER. C.E. NO. 16773

SANTA CLARITA VALLEY BLDG. DIST. 82 J.N. 0358-02

B.M. CL 9957 ELEV. 1247.467  
L & T IN N CE LYONS AVE. ON C/L  
PROD PEACHLAND AVE. 42 FT.  
N C/L INT. DR. 1-11-78  
NEWHALL QUAD. 1978

THE FOLLOWING COUNTY ENGINEER STANDARD PLANS APPLY TO THIS PROJECT

LEGEND table with 2 columns: Description and Reference Number. Includes items like MINIMUM PUBLIC SAFETY REQUIREMENTS, BRICK MANHOLE, NON-REINFORCED PRE-CAST CONC. MANHOLE, etc.

SANTA CLARITA VALLEY BLDG. DIST. NO. 82

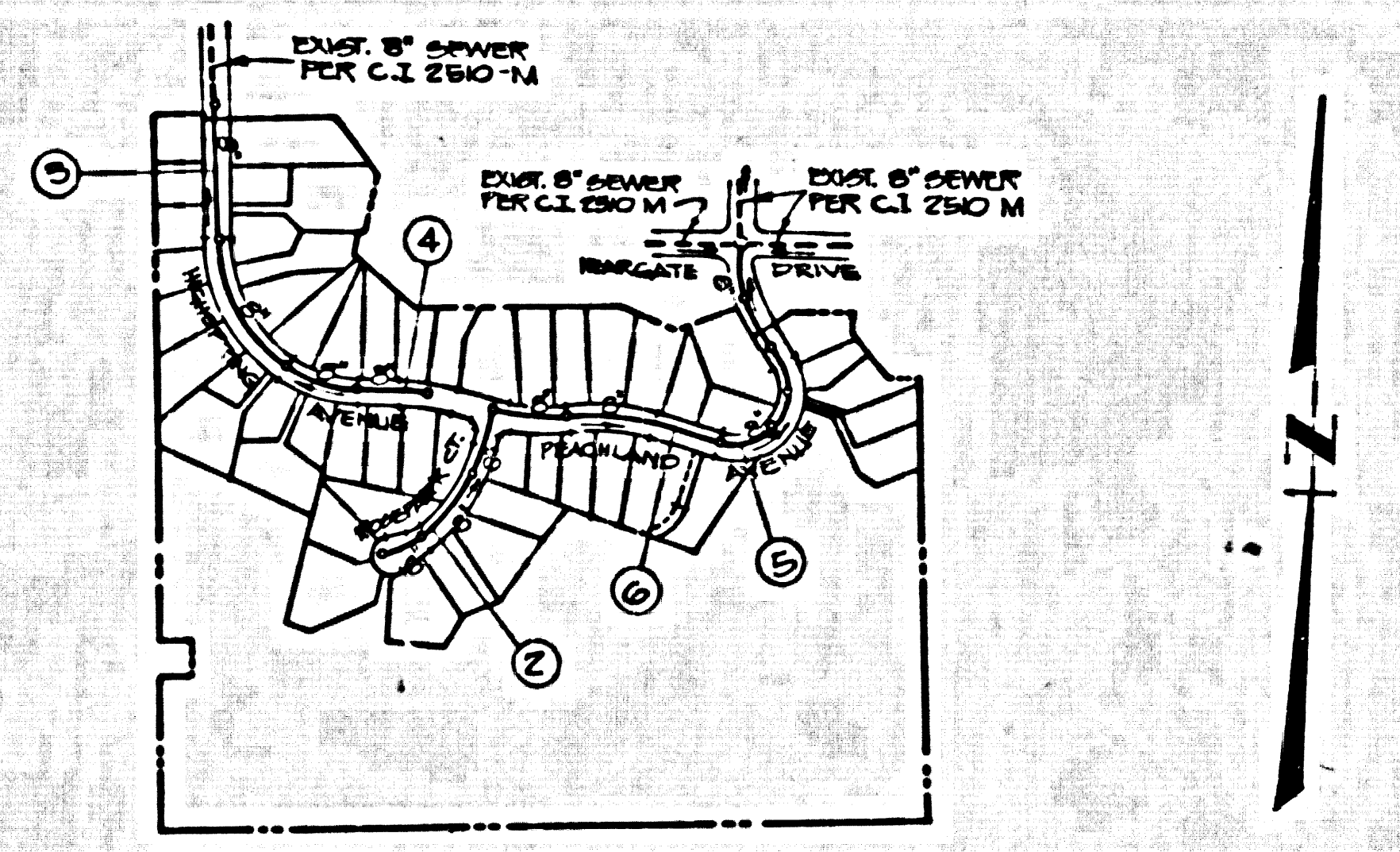
- NOTES: 1. PROVIDE STUPE ON THE PROPERTY LINE OR PROPERTY LINES PRODUCED AT RIGHT ANGLES TO THE SEWER LINE AT THE CENTER LINE OF EACH MANHOLE. 2. NO REPRESENTATIVE OF THE COUNTY ENGINEER WILL SURVEY OR LAY OUT ANY PORTION OF THE WORK. 3. THE PRIVATE ENGINEER SHALL FURNISH THE COUNTY ENGINEER WITH GRADE SHEETS AND STATIONING FOR ALL HOUSE LATERALS AND MAIN LATERALS...

NOTICE TO CONTRACTOR: The existence and location of any underground utility pipes or structures shown on these plans are obtained by a search of the available records. To the best of my knowledge there are no existing utilities except as shown on these plans. The contractor is required to take due precautionary measures to protect the utility lines shown and any other lines not of record or not shown on these plans.

CORRECT CHAPTERS AS INDICATED

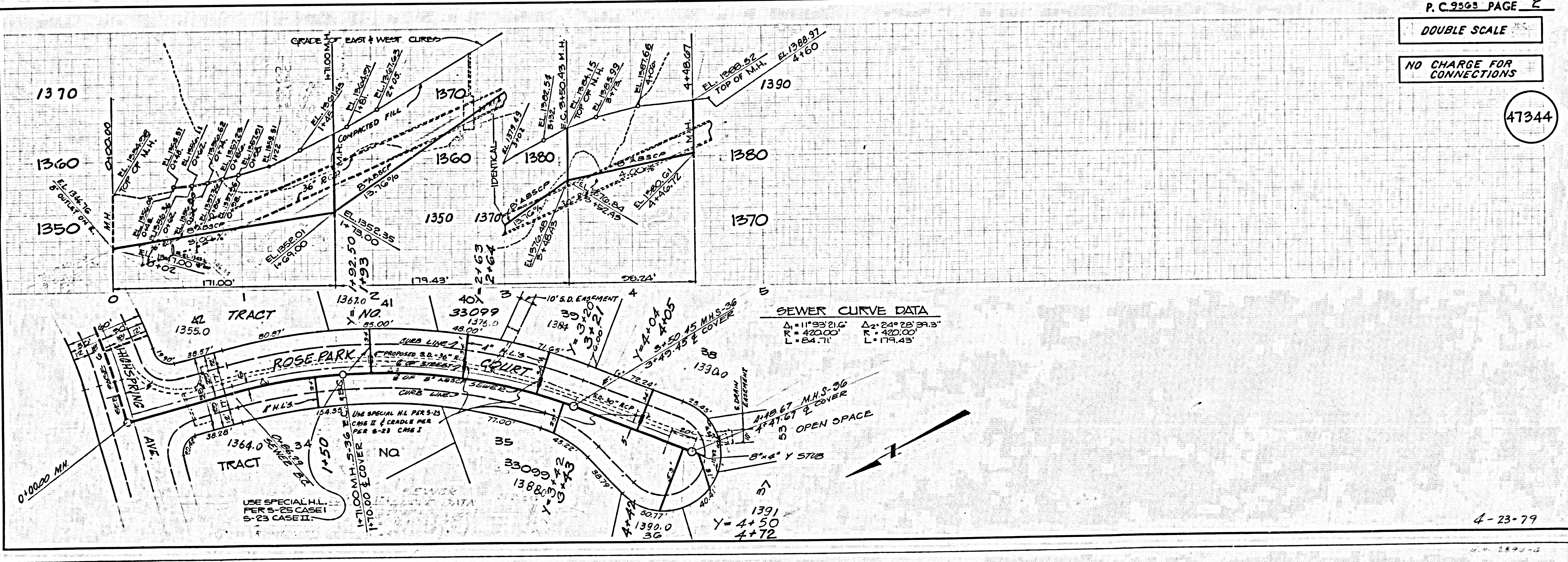
NOTE: CONSTRUCTION PROHIBITED ON LOT 53

NO CONNECTION FOR THE DISPOSAL OF INDUSTRIAL WASTES SHALL BE MADE TO SEWERS SHOWN ON THESE DRAWINGS UNLESS A PERMIT FOR INDUSTRIAL WASTE WATER DISCHARGE HAS BEEN ISSUED BY THE SANITATION DISTRICTS AND SAID CONNECTION BEFORE BREAKING INTO OR CONSTRUCTION ON A COUNTY SANITATION DISTRICT SEWER AND PRIOR TO FINAL ACCEPTANCE OF THE PROJECT SANITATION DISTRICT INSPECTOR SHALL BE NOTIFIED BY PHONE 362-8000 SO THAT REQUIRED INSPECTION CAN BE MADE.



INDEX MAP SCALE 1"=500' TRACT NO. 33099 P.C. 9563

NUMBERS IN CIRCLES INDICATE PAGE NUMBERS



DOUBLE SCALE

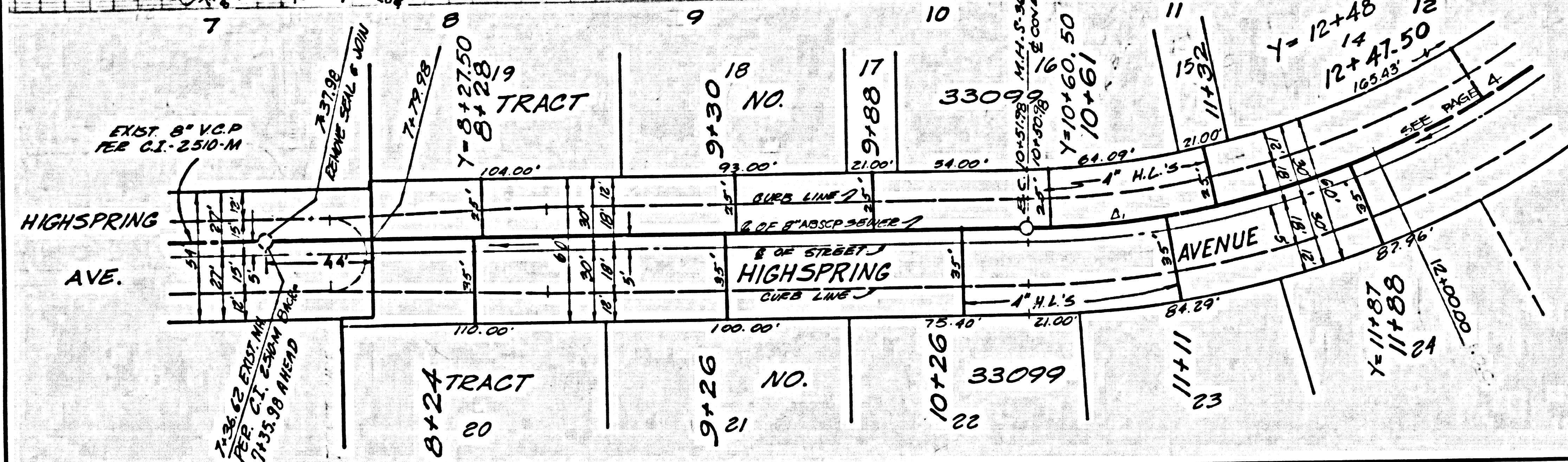
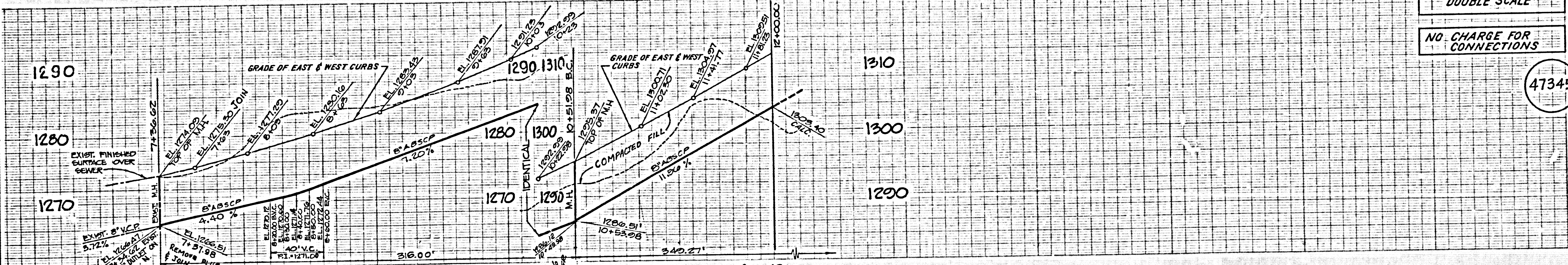
NO CHARGE FOR CONNECTIONS

47344

DOUBLE SCALE

NO CHARGE FOR CONNECTIONS

47345

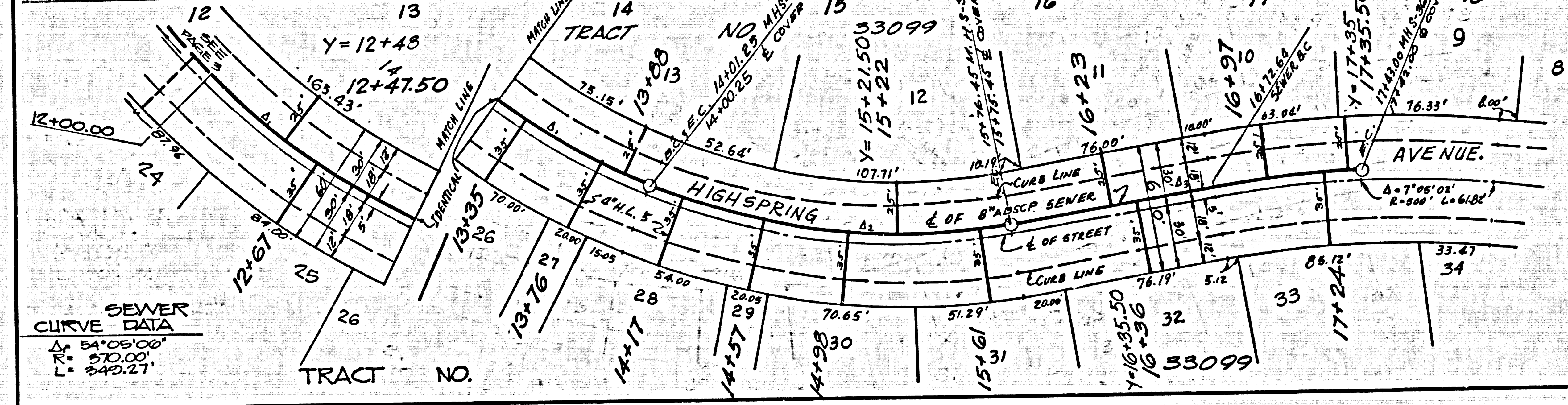
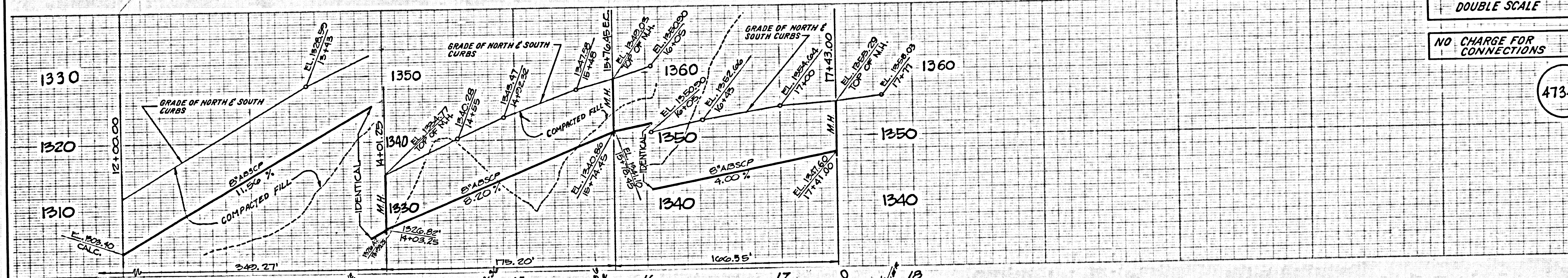


SEWER CURVE DATA  
 $\Delta = 54^{\circ}08'06''$   
 $R = 370.00'$   
 $L = 349.27'$

DOUBLE SCALE

NO CHARGE FOR CONNECTIONS

47346



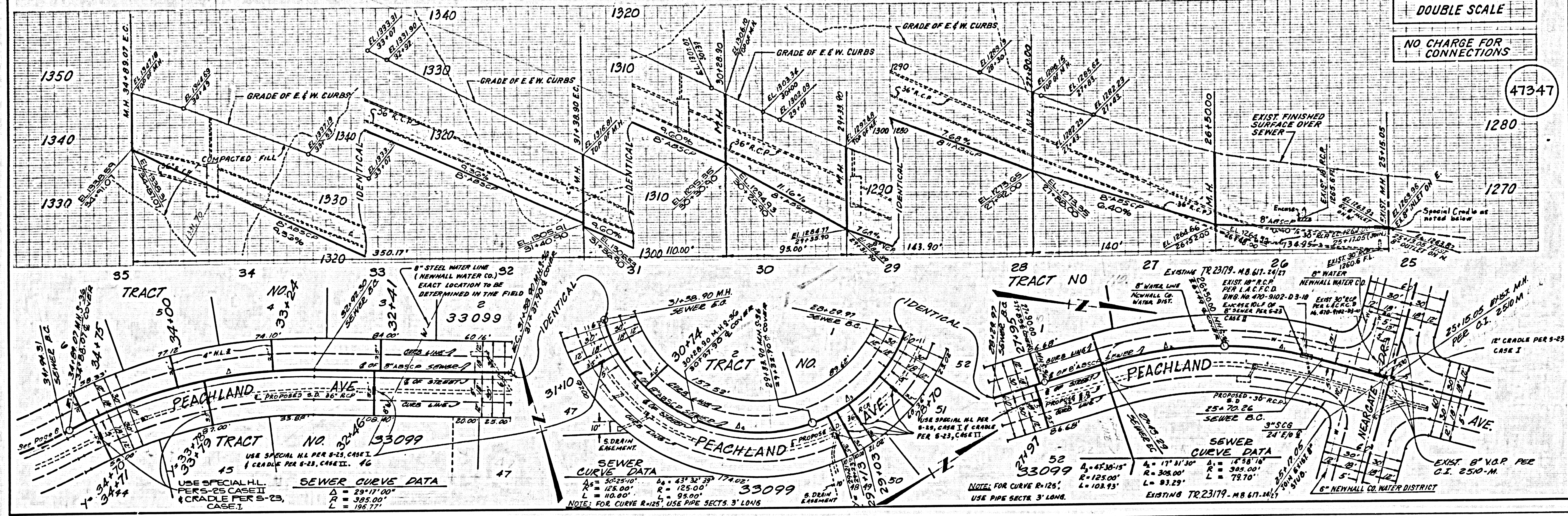
SEWER CURVE DATA  
 $\Delta = 54^{\circ}01'43''$   
 $R = 295.00'$   
 $L = 175.20'$   
 $\Delta = 7^{\circ}58'58''$   
 $R = 509.00'$   
 $L = 70.30'$

4-23-79

DOUBLE SCALE

NO CHARGE FOR CONNECTIONS

47347



DOUBLE SCALE

NO CHARGE FOR CONNECTIONS

47348

