

TO BE CONSTRUCTED IN
PARCEL MAP NO. 6859

PRIVATE CONTRACT NO. 9588

W.S. 62
 SHEET 1 OF 2 PAGES
 SCALE: VERT. 1" = 4' HORIZ. 1" = 40'
 SEPT. 1977
 PREPARED IN THE OFFICES OF

R.D. MURDOLE & ASSOCIATES
 30 MacArthur Blvd., Suite 100
 Los Angeles, California 90048
 BY: *Robert D. Murdole*
 REG. C.E. No. 17062

THE FOLLOWING LATEST REVISED STANDARD PLANS ON FILE IN THE OFFICE OF THE COUNTY ENGINEER SHALL APPLY IN THE CONSTRUCTION OF THIS PROJECT:

SEWER	5-1
MANHOLE PUBLIC SAFETY REQUIREMENTS	5-2
SEWER MANHOLE	5-3
STANDARD MANHOLE EXIST	5-4
REVISION FOR SEWER PIPE	5-5
CALLINGS AND ENCASEMENT	5-6
WYE OR THE SUPPORT	5-7
ALLOWANCE TRENCH WIDTH	5-8
LOCATING MANHOLE FRAME AND COVER	5-9
NON-REINFORCED CONCRETE MANHOLES	5-10

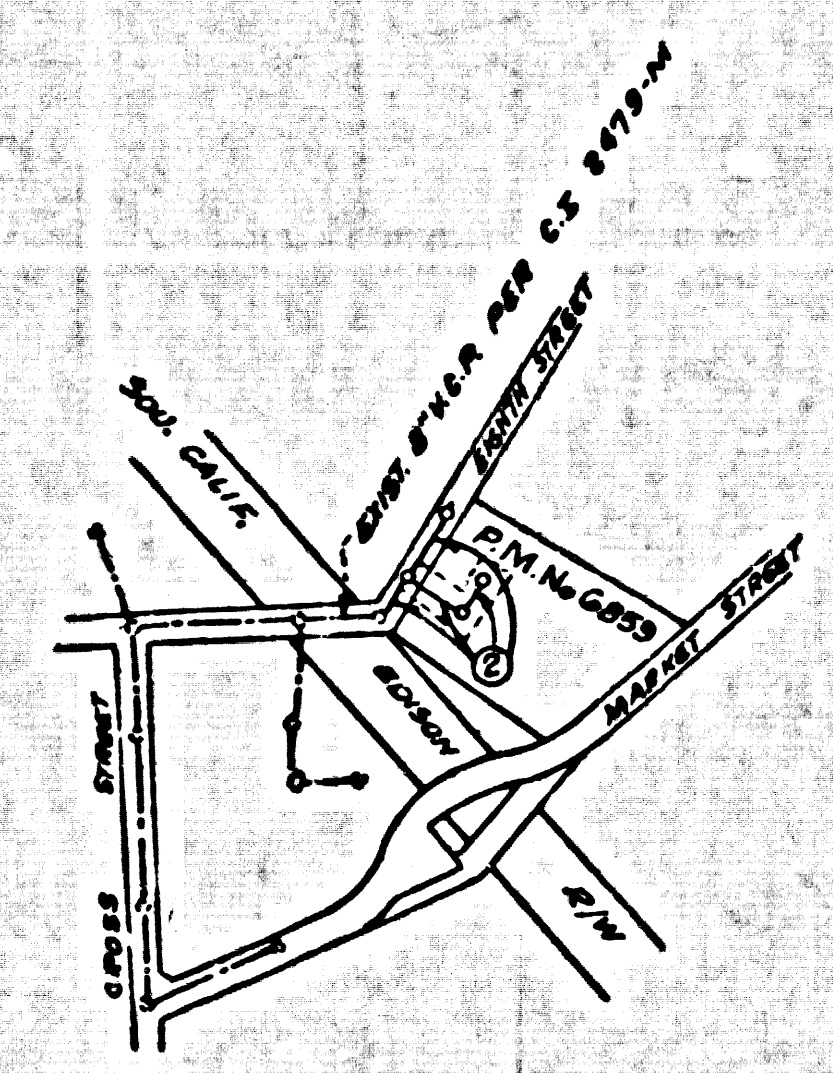
COUNTY OF LOS ANGELES, CALIFORNIA

Stephen J. Noance, COUNTY ENGINEER
 APPROVED *Robert W. Knight* 3-16-79
 CHECKED *Edward J. Hildner* 3-16-79
 REG. C.E. NO. 10653
 Santa Clarita Valley BLDG. DIST. 8-3
 I.N. 6358.19

B.M. *BL 815* ELEV. 1332.790
 1 1/2" CB ON N DRAIN TO HSE
 NO 24345 CROSS ST 30 FT WIDE
 3 FT 5 CL. PROD MARKET ST
 NEWHALL QUAD. 1972

Revision #1 May 14, 1981
 Altered Lotlines to conform with latest configuration on PM 6859
 APPROVED *Ralph David Junt* 5/14/81
 TITLE OF COUNTY ENGINEER

Revision #2 Sept. 6, 1981
 Changed sewer alignment between Station 20+62.16 and Station 22+48.25 on Eighth Street.
 APPROVED *Ralph David Junt* 9/16/81
 TITLE OF COUNTY ENGINEER



INDEX MAP
 PARCEL MAP NO. 6859
 P.C. 9588
 SCALE 1"=500'

BEFORE BREAKING INTO OR CONSTRUCTION ON A COUNTY SANITATION DISTRICT SEWER AND PRIOR TO FINAL ACCEPTANCE OF THE PROJECT, SANITATION DISTRICT INSPECTOR SHALL BE NOTIFIED BY PHONE 362-3000 SO THAT REQUIRED INSPECTOR CAN BE MADE.

NO CONNECTION FOR THE DISPOSAL OF INDUSTRIAL WASTES SHALL BE MADE TO SEWERS SHOWN ON THESE DRAWINGS UNTIL A PERMIT FOR INDUSTRIAL WASTE WATER DISCHARGE HAS BEEN ISSUED BY THE SANITATION DISTRICTS FOR SAID CONNECTION.

NOTICE TO CONTRACTORS

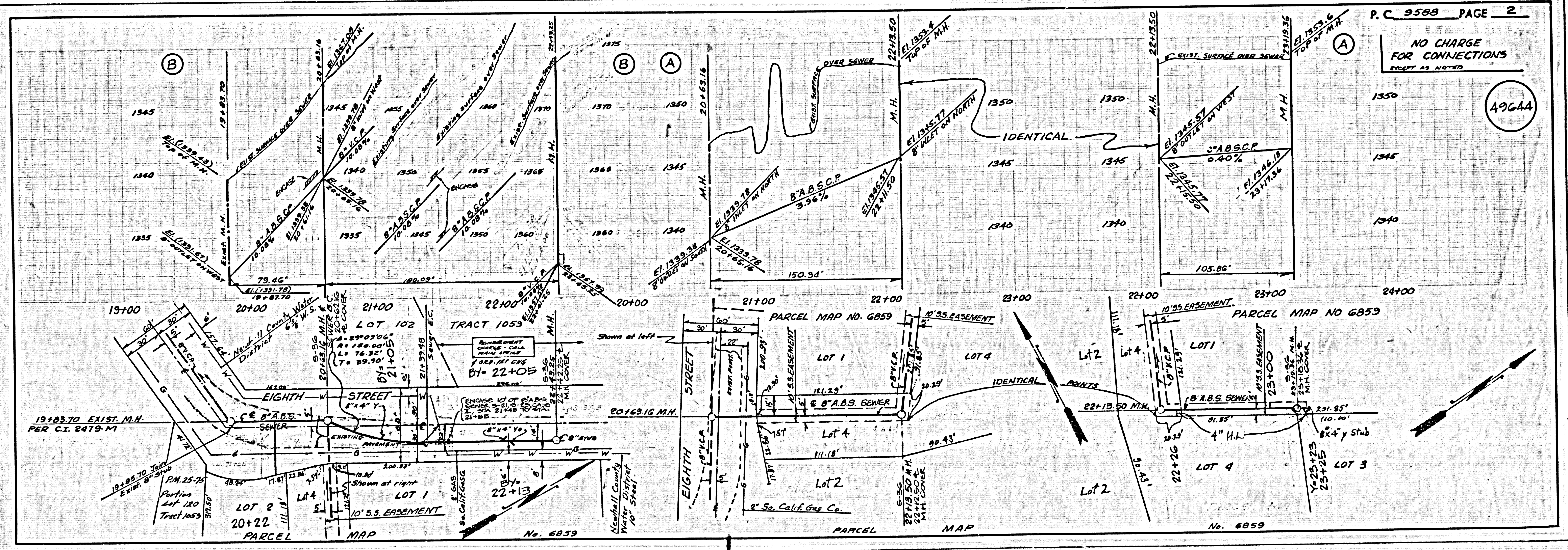
THE EXISTENCE AND LOCATION OF ANY UNDERGROUND UTILITY PIPES OR STRUCTURES SHOWN ON THIS PLAN IS OBTAINED BY A SEARCH OF THE AVAILABLE RECORDS, TO THE BEST OF MY KNOWLEDGE THERE NO EXISTING UTILITIES EXCEPT AS SHOWN ON THIS PLAN. THE CONTRACTOR IS REQUIRED TO TAKE DUE PRECAUTIONARY MEASURES TO PROTECT THE UTILITIES SHOWN AND OTHER LINES NOT OF RECORD OR NOT SHOWN ON THIS PLAN.

CONTRACTORS ARE CAUTIONED TO OBSERVE THE FOLLOWING RULE IN USING THE GRADE STAKES GIVEN BY ENGINEER AND PUTTING IN PIPES. THREE CONSECUTIVE POINTS THAT ARE SHOWN TO BE ON THE SAME RATE OF SLOPE MUST BE USED IN CONJUNCTION TO CHECK THAT ANY DEVIATION OUT OF A PERFECT STRAIGHT LINE MAY BE DETECTED AND IN CASE ANY SUCH DISCREPANCY IS FOUND, THE SAME MUST BE REPORTED. OTHERWISE THE ENGINEER WILL NOT BE RESPONSIBLE FOR ANY ERROR IN GRADE OF THE FINISHED WORK.

Robert O. Hurd
 R.O.E. 17062

- GENERAL NOTES:**
- ELEVATIONS ARE IN FEET ABOVE M.S.C. & 0.2784 FEET ABOVE OF 1929.
 - NO REVISIONS SHALL BE MADE IN THESE PLANS WITHOUT THE APPROVAL OF THE COUNTY ENGINEER.
 - NO REPRESENTATIVE OF THE COUNTY ENGINEER WILL BE PRESENT ON PLANS AND PROFILES GRADE POINTS FOR TOP OF GRADES TO WHICH THIS INFORMATION IS TO BE CONSTRUCTED ARE SHOWN ON PLANS AND PROFILES. AT ALL POINTS BETWEEN SPACING POINTS THE GRADE SHALL BE ESTABLISHED SO AS TO CONFORM TO A STRAIGHT LINE DRAWN BETWEEN SAID INDICATED POINTS.
 - THE PRIVATE ENGINEER SHALL FURNISH THE COUNTY ENGINEER WITH GRADE SHEETS AND STATIONING FOR ALL HOUSE LATERALS AND "T" OR "Y" BRANCHES AND SHALL PROVIDE STAKES FOR THEM AT THEIR PROPOSED LOCATIONS WITH ESTABLISHED PLUMB MARKS. ALL HOUSE LATERALS SHALL BE CONSTRUCTED IN A STRAIGHT ALIGNMENT AT RIGHT ANGLES FROM THE MAIN LINE SEWER EXCEPT AS SHOWN ON THE PLANS. HOUSE LATERALS FROM CURBSIDE SHALL NOT HAVE AN ANGLE OF LESS THAN 45° WITH THE MAIN LINE SEWER. ANY CHANGE IN ALIGNMENT SHALL BE REQUESTED IN WRITING BY THE PRIVATE ENGINEER.
 - THE PRIVATE ENGINEER SHALL FURNISH THE HOUSE LATERAL ABOVE AT THE PROPERTY LINE BELOW THE TOP OF CURB ELEVATION FOR EACH HOUSE LATERAL ON THE GRADE SHEET.
 - BEFORE WORK CAN BE STARTED, THE CONTRACTOR MUST OBTAIN A PERMIT TO EXCAVATE IN COUNTY STREETS FROM THE L.A. COUNTY ROAD DEPT., DISTRICT OFFICE NO. 47 AND PAY A FEE TO THE COUNTY ENGINEER. (S.C. 5-110, Encasement Plan, Annex 405, 1/2" MIN. DEPTH TO COVER THE COST OF CONSTRUCTION INSPECTION AND RECORD PLANS.
 - IF WORK IS TO BE DONE IN A STATE HIGHWAY, A PERMIT MUST BE OBTAINED FROM THE STATE OF CALIFORNIA, DIVISION OF HIGHWAYS, 126 SOUTH SPRING STREET, LOS ANGELES, CALIFORNIA.
 - APPROVAL OF THIS PLAN BY THE COUNTY OF LOS ANGELES DOES NOT CONSTITUTE A REPRESENTATION AS TO THE ACCURACY OF THE LOCATION OF OR THE EXISTENCE OF ANY UNDERGROUND UTILITY PIPE, OR STRUCTURE WITHIN THE LIMITS OF THIS PROJECT. THIS NOTE APPLIES TO ALL PAGES.
 - REFER TO SECTION 116.4.1 OF THE STANDARD SPECIFICATIONS, ENGINEERING SAFETY CODE.
 - PRIOR TO ISSUANCE OF THE REQUIRED SEWER CONSTRUCTION PERMIT BY THE COUNTY ENGINEER, THE CONTRACTOR SHALL OBTAIN A PERMIT TO EXCAVATE FROM THE STATE OF CALIFORNIA, DIVISION OF INDUSTRIAL SAFETY AND SHALL FILE A CERTIFICATE OF WORKMAN'S COMPENSATION INSURANCE AND LIABILITY INSURANCE WITH THE COUNTY ENGINEER.

- CONSTRUCTION NOTES:**
- WORK SHALL BE CONSTRUCTED ACCORDING TO THE STANDARD SPECIFICATIONS FOR PUBLIC WORKS CONSTRUCTION (116.5) WITH THE COUNTY ENGINEER'S SPECIAL PROVISIONS FOR THE CONSTRUCTION OF SANITARY SEWERS DATED SEPT. 21, 1976 AND SHALL BE PROSECUTED ONLY IN THE PRESENCE OF THE COUNTY ENGINEER.
 - THE CONTRACTOR SHALL NOTIFY THE M.H. DEPT. BY TELEPHONE, 379-7782 AT LEAST TWENTY-FOUR HOURS BEFORE STARTING ANY WORK UNDER LINE CONTRACT.
 - HOUSE LATERALS TO BE CONSTRUCTED WITH INVERTS AT PROPERTY LINE & FEET BELOW CURB EXCEPT AS NOTED.
 - WYE OR THE BRANCHES MAY BE USED FOR CONNECTIONS TO MAINLINE SEWERS EXCEPT AS NOTED.
 - ALL STRUCTURES SHALL BE EITHER BRICK MANHOLES PER 5-3 OR PRECAST CONCRETE MANHOLES PER 5-5, EXCEPT AS NOTED.
 - PROVIDE STAKES ON THE PROPERTY LINE OR PROPERTY LINE PRODUCE AT RIGHT ANGLES TO THE SEWER LINE AT THE CENTER LINE OF EACH MANHOLE.
 - MANHOLE TOPS IN UNIMPROVED RIGHTS OF WAY TO BE SIX INCHES ABOVE FINISHED GRADE.
 - VITRIFIED CLAY PIPE JOINTS SHALL BE TYPE "F", "P", OR "Q" PER STANDARD SPECIFICATIONS SECTION 200-2.
 - IF A POWER POLE IS WITHIN FEET OF THE SEWER, THE SEWER SHALL BE ENCASED, PER 5-3, CASE II, TWO FEET ON EACH SIDE FROM THE POINT OF INTERFERENCE.
 - IF DURING THE COURSE OF CONSTRUCTION IT IS DETERMINED THAT THERE IS LESS THAN FOUR FEET OF COVER OVER THE TOP OF A MAIN LINE OR HOUSE LATERAL V.C.P. SEWER WHICH IS NOT INDICATED ON THIS PLAN, THE PIPE SHALL BE ENCASED PER 5-3, CASE II, UNLESS OTHERWISE APPROVED BY THE COUNTY ENGINEER.
 - ALL JOINTS BETWEEN CAST IRON PIPE AND VITRIFIED CLAY PIPE SHALL BE MADE WITH A RUBBER SLEEVE JOINT, TYPE "C" OR "T", WITH GASKETS AS NECESSARY PER STANDARD SPECIFICATIONS, SECTION 200-6.
 - SEWERS TO BE TRENCH FOR SEWAGES PER SECTION 200-1.6 OF THE STANDARD SPECIFICATIONS AND SPECIAL PROVISIONS.
 - REPAIRS ALL TRENCHES WITHIN HAVERD AREA TO MEET L.A. COUNTY ROAD DEPT. OR CALIFORNIA STATE HIGHWAY REQUIREMENTS IN ACCORDANCE WITH PERMITS.
 - FULL COMPLIANCE WITH SECTION 200-1.6 OF THE SPECIAL PROVISIONS WITH BRACED OR REINFORCED FOR ACCEPTANCE IN STREETS. CERTIFICATION OF SUFFICIENT CONSTRUCTION AND SAID CERTIFICATE BY A QUALIFIED, REGISTERED TESTING LABORATORY SHALL BE PROVIDED BY THE PERMITTEE PRIOR TO THE ISSUANCE OF A CERTIFICATE OF FINAL ACCEPTANCE.



BC 210
 6221
 210