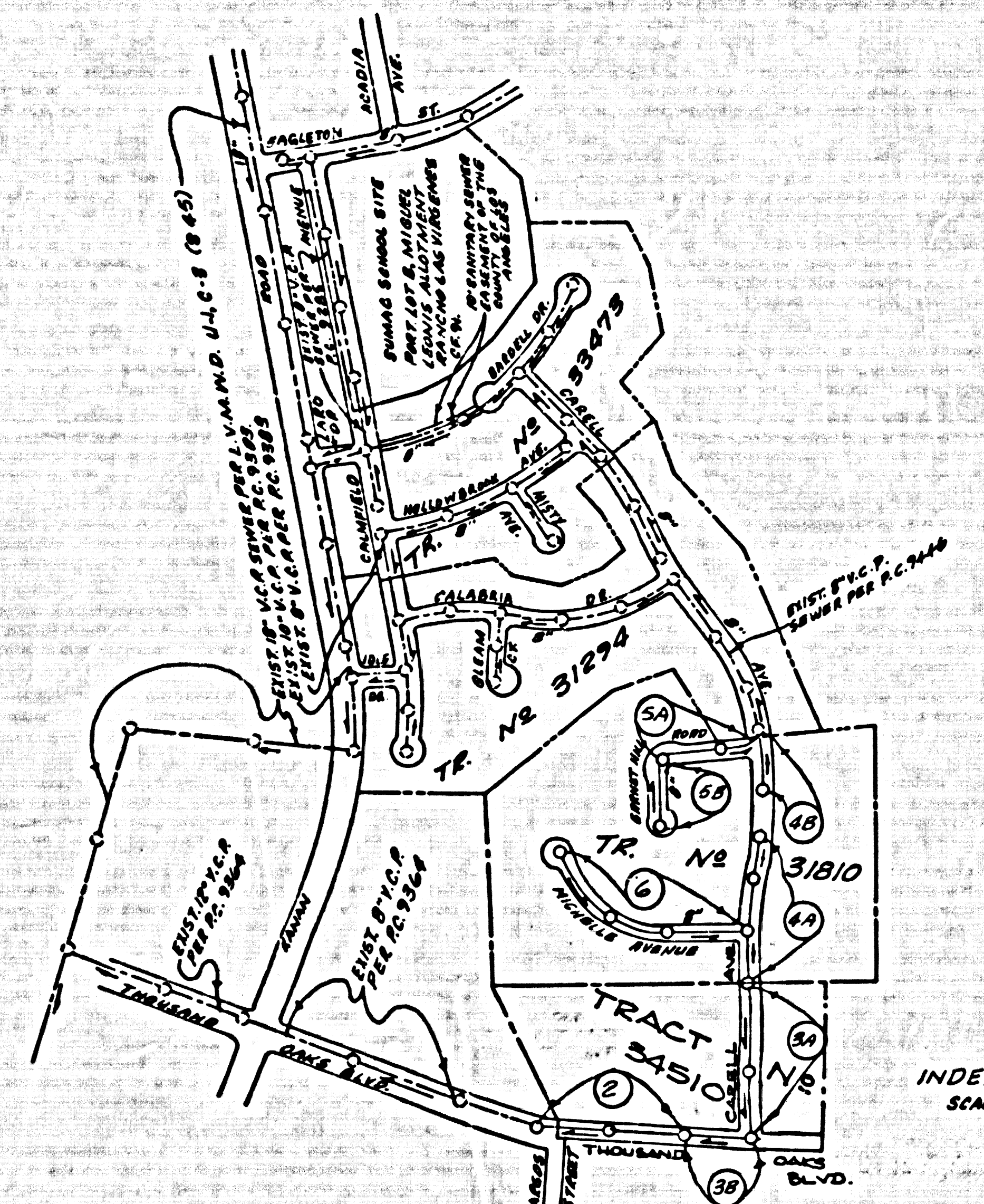


B.M. 57 2007 ELEV. 912.88
 EOBM TAG IN N. END HOWL. FOR CATTLE
 UNDERPASS BFT. E/O CA. KAHAN ROAD
 0.85 MI. N. THOUSAND OAKS BLVD.
 MALIBU QUAD. 1972

DOUBLE SCALE



REVISION No. 1 DATE 1-23-78
 REVISE INDEX MAP & LEGAL
 DESCRIPTION OF PROPERTY AND
 ADD PROPOSED CURB LINES ON
 PAGE 2, 3A, 3B & 4A
 APPROVED *Baron D. Volody*
 OFFICE OF COUNTY ENGINEER/RENO. 10673

ISSUE NO PERMITS
 UNTIL P.C.'S 9304,
 9383 & 9414 HAVE
 BEEN ACCEPTED

- GENERAL NOTES:
- ELEVATIONS ARE IN FEET ABOVE U.S.C. & G.S. SEA LEVEL DATUM OF 1929.
 - NO REVISIONS SHALL BE MADE IN THESE PLANS WITHOUT THE APPROVAL OF THE COUNTY ENGINEER.
 - NO REPRESENTATIVE OF THE COUNTY ENGINEER WILL SURVEY OR LAY OUT ANY PORTION OF THE WORK.
 - GRADES TO WHICH THIS IMPROVEMENT IS TO BE CONSTRUCTED ARE SHOWN ON PLANS AND PROFILES. GRADE POINTS FOR TOP OF CURB, CENTER LINE OF STREETS, OR CENTER LINE OF ALLEYS ARE SHOWN BY CIRCLES ON PROFILES. AT ALL POINTS BETWEEN DESIGNATED POINTS THE GRADE SHALL BE ESTABLISHED AS TO CONFORM TO A STRAIGHT LINE DRAWN BETWEEN SAID DESIGNATED POINTS.
 - THE PRIVATE ENGINEER SHALL FURNISH THE COUNTY ENGINEER WITH GRADE SHEETS AND STATIONING FOR ALL HOUSE LATERALS AND "T" OR "Y" BRANCHES AND SHALL PROVIDE STAKES FOR THEM AT THEIR PROPER LOCATIONS WITH STATIONING PLAINLY MARKED. ALL HOUSE LATERALS SHALL BE CONSTRUCTED IN A STRAIGHT ALIGNMENT AT RIGHT ANGLES FROM THE MAIN LINE SEWER EXCEPT AS SHOWN ON THE PLANS. HOUSE LATERALS FROM CHIMNEYS SHALL NOT HAVE AN ANGLE OF LESS THAN 45° WITH THE MAIN LINE SEWER. ANY CHANGE IN ALIGNMENT SHALL BE REQUESTED IN WRITING BY THE PRIVATE ENGINEER.
 - THE PRIVATE ENGINEER SHALL FURNISH THE HOUSE LATERAL DEPTH AT THE PROPERTY LINE BELOW THE TOP OF CURB ELEVATION FOR EACH HOUSE LATERAL ON THE GRADE SHEET.
 - BEFORE WORK CAN BE STARTED, THE CONTRACTOR MUST OBTAIN A PERMIT TO EXCAVATE IN COUNTY STREETS FROM THE L.A. COUNTY ROAD DEPT. DISTRICT OFFICE AND PAY A FEE TO THE COUNTY ENGINEER, 250 S. HOPEMONT, E. P. REGIONAL OFFICE, TO COVER THE COST OF CONSTRUCTION INSPECTION AND RECORD PLANS.
 - IF WORK IS TO BE DONE IN A STATE HIGHWAY, A PERMIT MUST BE OBTAINED FROM THE STATE OF CALIFORNIA, DIVISION OF HIGHWAYS, 120 SOUTH SPRING STREET, LOS ANGELES, CALIFORNIA.
 - APPROVAL OF THIS PLAN BY THE COUNTY OF LOS ANGELES DOES NOT CONSTITUTE A REPRESENTATION AS TO THE ACCURACY OF THE LOCATION OF OR THE EXISTENCE OR NON-EXISTENCE OF ANY UNDERGROUND UTILITY PIPE, OR STRUCTURE WITHIN THE LIMITS OF THIS PROJECT. THIS NOTE APPLIES TO ALL PAGES.
 - REFER TO SECTION 7-18.1 OF THE STANDARD SPECIFICATIONS REGARDING SAFETY ORDERS.
 - THE UNDERGROUND UTILITY COMPANIES WITHIN THE LIMITS OF THIS PROJECT ARE AS FOLLOWS:
 ELECTRIC: SOUTHERN CALIFORNIA GAS COMPANY
 GAS: SOUTHERN CALIFORNIA GAS COMPANY
 WATER: SOUTHERN CALIFORNIA GAS COMPANY
 TELEPHONE: PACIFIC TELEPHONE COMPANY
 - PERMITS TO EXCAVATE AND THE REQUIRED SEWER CONNECTION PERMIT BY THE COUNTY ENGINEER, THE CONTRACTOR SHALL OBTAIN A PERMIT TO EXCAVATE FROM THE STATE OF CALIFORNIA, DIVISION OF INDUSTRIAL SAFETY & FILE A CERTIFICATE OF WORKERS COMPENSATION INSURANCE.

- CONSTRUCTION NOTES:
- WORK SHALL BE CONSTRUCTED ACCORDING TO THE STANDARD SPECIFICATIONS FOR PUBLIC WORKS CONSTRUCTION (1976 EDITION WITH 1977 & 1978 SUPPLEMENTS) AND COUNTY ENGINEER SPECIAL PROVISIONS FOR THE CONSTRUCTION OF SANITARY SEWERS DATED SEPTEMBER 21, 1976 AND SHALL BE PROSECUTED ONLY IN THE PRESENCE OF THE COUNTY ENGINEER.
 - THE CONTRACTOR SHALL NOTIFY THE CIVIL DIVISION BY TELEPHONE, (213) 974-7223, AT LEAST TWENTY-FOUR HOURS BEFORE STARTING ANY WORK UNDER THIS CONTRACT.
 - HOUSE LATERALS TO BE CONSTRUCTED WITH INVERTS AT PROPERTY LINE 6 FEET BELOW CURB GRADE EXCEPT AS NOTED.
 - TYPE OF THE MANHOLES MAY BE USED FOR CONNECTIONS TO MAINLINE SEWERS EXCEPT AS NOTED.
 - ALL STRUCTURES SHALL BE EITHER BRICK MANHOLES PER S-3 OR PRECAST CONCRETE MANHOLES PER S-24, EXCEPT AS NOTED.
 - SEWERS TO BE AND PRESSURE TRENCH PERMITS PER BEST PRACTICE OF THE STANDARD SPECIFICATIONS AND SPECIAL PROVISIONS.
 - RESURFACE ALL TRENCHES WITHIN PAVED AREAS TO MEET L.A. COUNTY ROAD DEPT. OR CALIFORNIA STATE HIGHWAY REQUIREMENTS IN ACCORDANCE WITH PERMITS.
 - PERFORMANCE WITH SECTION 306-1.8.6 OF THE SPECIAL PROVISIONS WILL BE REQUIRED FOR BACKFILL IN STREETS. CERTIFICATION OF BACKFILL COMPACTION AND SAND EQUIVALENTS BY A QUALIFIED, REGISTERED TESTING LABORATORY SHALL BE PROVIDED BY THE PERMITTEE PRIOR TO THE ISSUANCE OF A CERTIFICATE OF PARTIAL ACCEPTANCE.

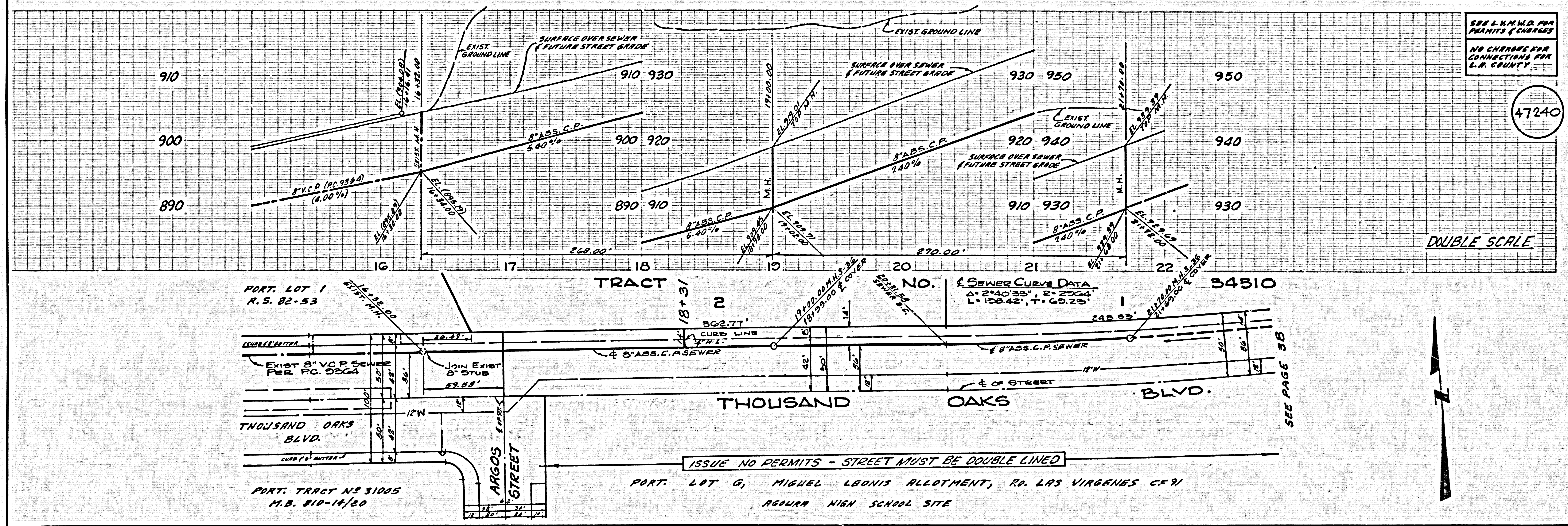
PROFILE, ALIGNMENT AND GRADE OF
SANITARY SEWERS PAGE 1
 TO BE CONSTRUCTED IN
TRACT NO. 31810 & 34510
PRIVATE CONTRACT NO. 9591
 W.S. 90
 3 SHEETS, 6 PAGES (47239)
 SCALE: VERT. 1"=6' DEC. 1978
 HORIZ. 1"=60'
 PREPARED IN THE OFFICES OF
VANTAGE ENGINEERING COMPANY
 6525 1/2 FALLBROOK AVENUE
 CANOGA PARK, CALIF. 91307
 BY: *Umar A. M. ...*
 REG. C. E. No. 14815

THE FOLLOWING LATEST REVISED STANDARD PLANS ON FILE IN THE OFFICE OF THE COUNTY ENGINEER SHALL APPLY IN THE CONSTRUCTION OF THIS PROJECT.

LEGEND	S-1
MINIMUM PUBLIC SAFETY REQUIREMENTS	S-2
BRICK MANHOLE	S-3
STANDARD MANHOLE STEP	S-4
BEDDING FOR SEWER PIPE	S-5
CRADLING AND ENCASMENT	S-6
WYE OR THE SUPPORT	S-7
ALLOWABLE TRENCH WIDTH	S-8
LOADING MANHOLE FRAMING AND COVER	S-9
NON-REINFORCED PRECAST CONCRETE MANHOLE	S-10
SPECIAL HOUSE LATERALS	S-11
SPECIAL SUPPORT AND PROTECTION	S-12

COUNTY OF LOS ANGELES, CALIFORNIA
 STEPHEN J. KOONCE, COUNTY ENGINEER LAS VIRGENES MUNICIPAL WATER DISTRICT
 APPROVED *John W. Keigel* 12-18-78 APPROVED *John Stokes* 12/19/78
 CHECKED *Baron D. Volody* 12/15/78
 REG. C. E. NO. 10653
 CALABASAS BLDG. DIST. 91 I.N. 0358-18

P.C. 9591 PAGE 2



SEE L.A. M.W.D. FOR
 PERMITS & CHARGES
 NO CHARGES FOR
 CONNECTIONS FOR
 L.A. COUNTY

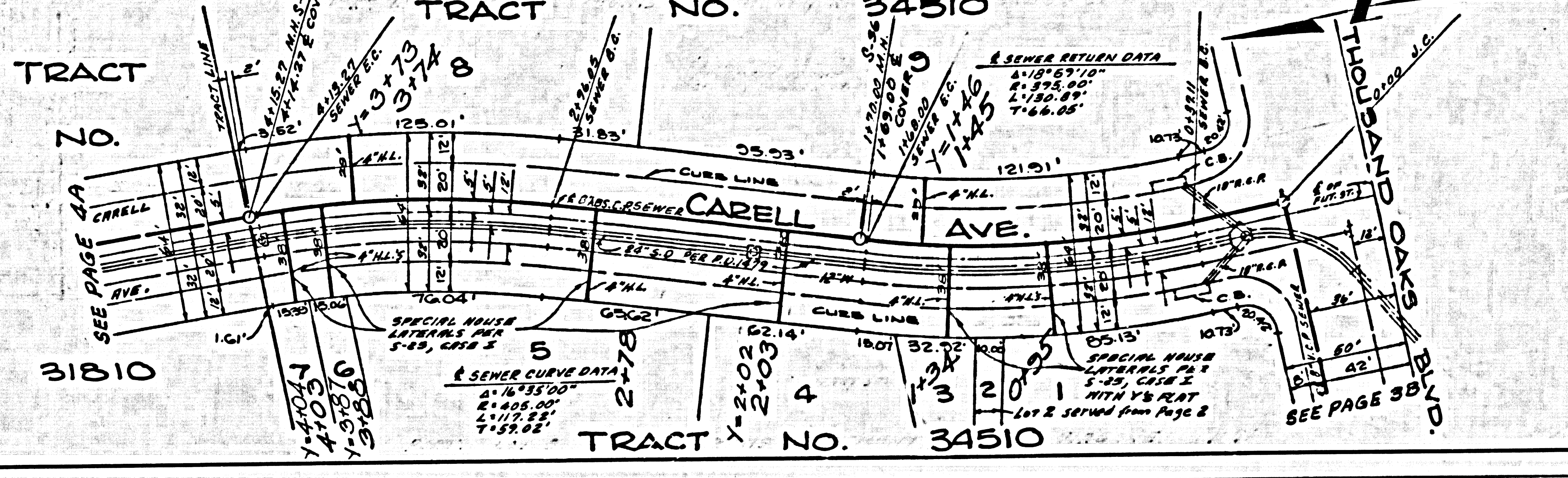
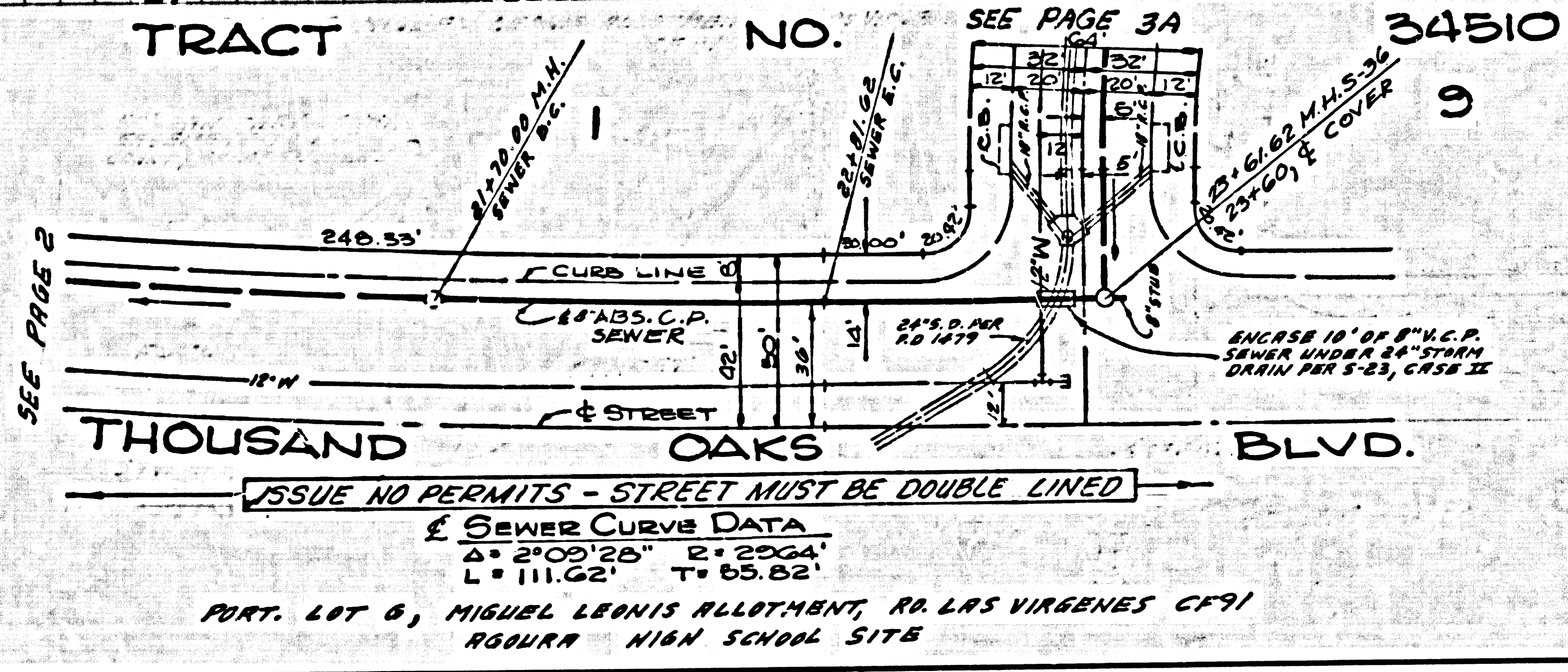
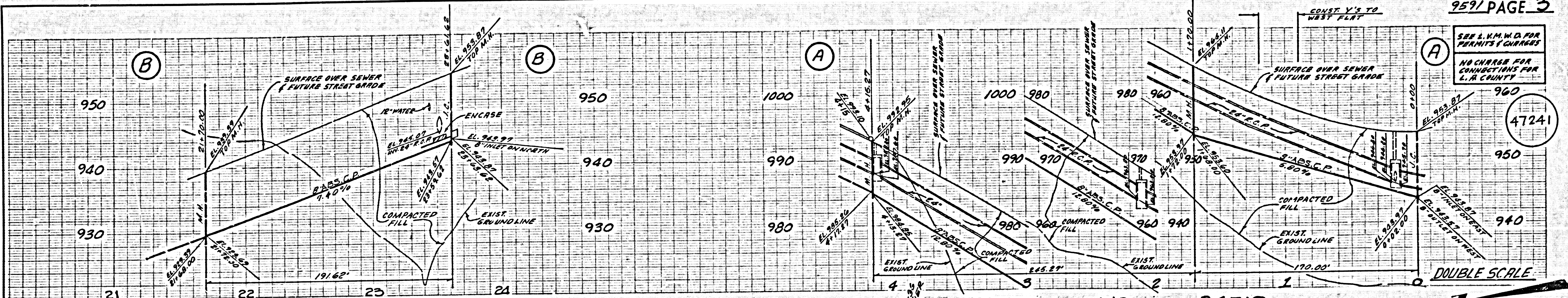
47240

DOUBLE SCALE

SEE L.H.M.D. FOR PERMITS & CHARGES
NO CHARGE FOR CONNECTIONS FOR L.A. COUNTY

47241

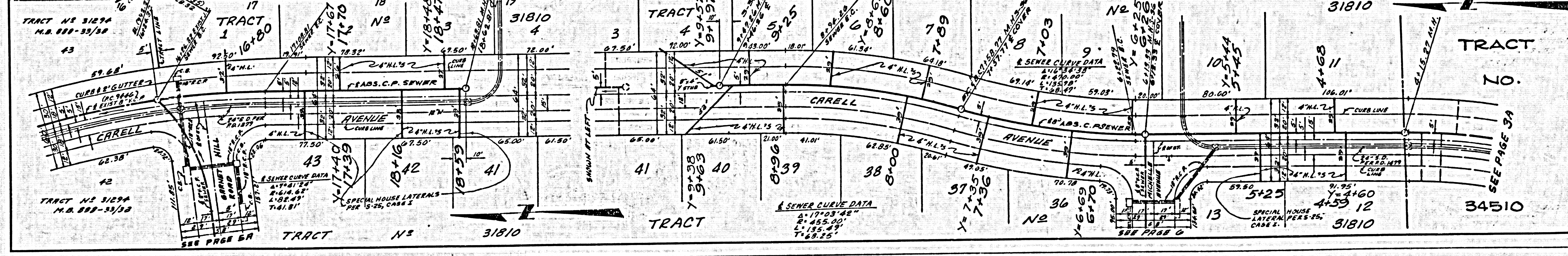
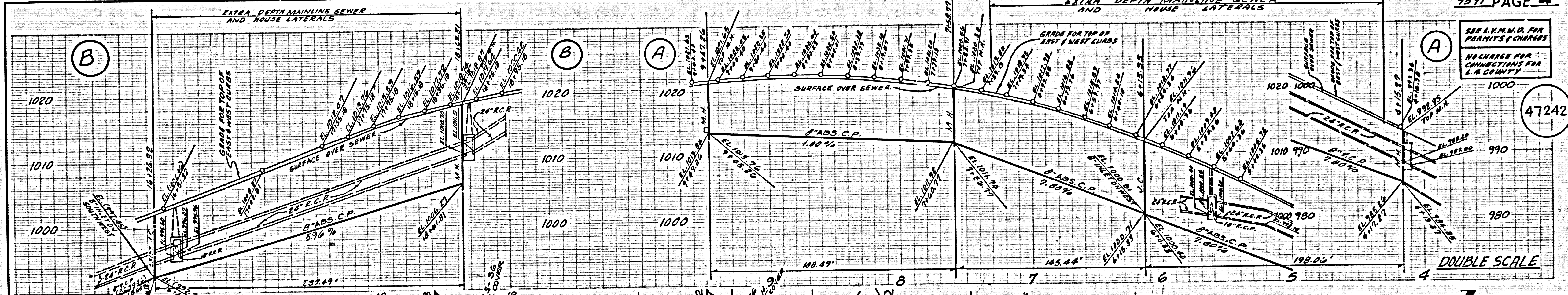
DOUBLE SCALE



SEE L.H.M.D. FOR PERMITS & CHARGES
NO CHARGE FOR CONNECTIONS FOR L.A. COUNTY

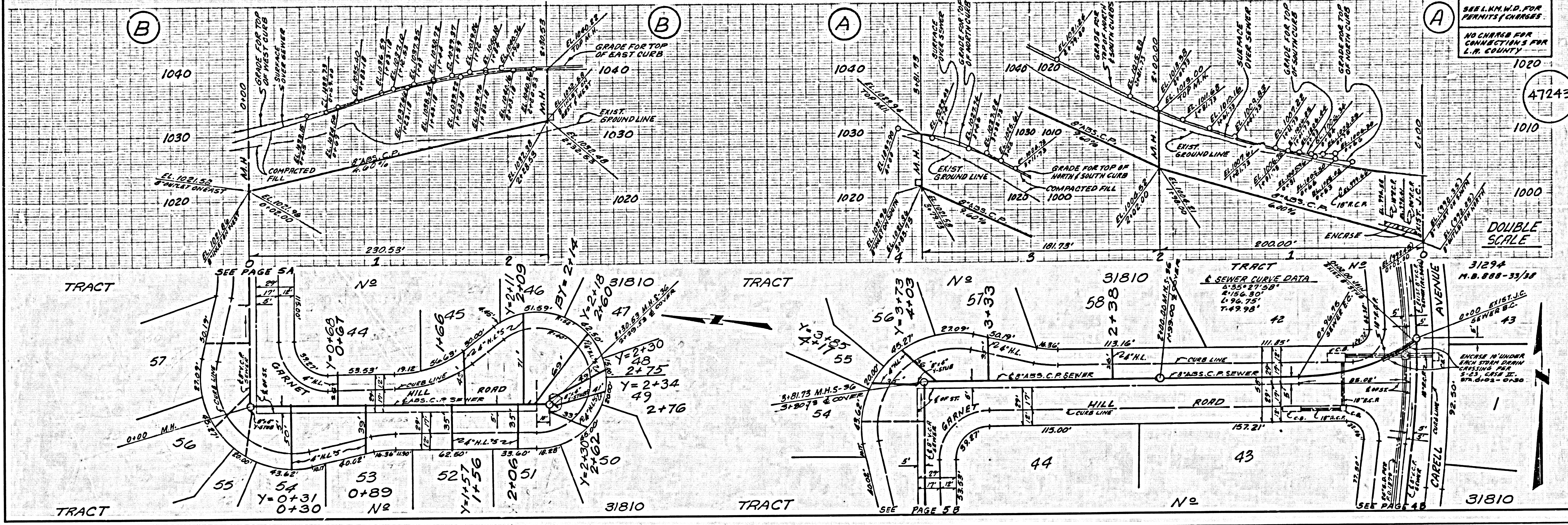
47242

DOUBLE SCALE



SEE L.M.W.D. FOR PERMITS & CHARGES
NO CHARGE FOR CONSTRUCTION FOR L.M. COUNTY

47243



SEE L.M.W.D. FOR PERMITS & CHARGES
NO CHARGE FOR CONSTRUCTION FOR L.M. COUNTY

47244

