

TO BE CONSTRUCTED IN  
**TRACT NO. 34468**  
**PRIVATE CONTRACT NO. 9594**

W.S. 246 5121  
 2 SHEETS, 4 PAGES  
 SCALE: VERT. 1"=4'  
 HORIZ. 1"=40'  
 OCTOBER, 1978  
 PREPARED IN THE OFFICES OF  
 RIGDON & ASSOCIATES CIVIL ENGINEERS & SURVEYORS  
 8138 Foothill Blvd. P.O. Box 280  
 Sunland Calif 91040 213/353-2413  
 BY: *John D. Parkhurst*  
 REG. E.C. No. 19392

47587

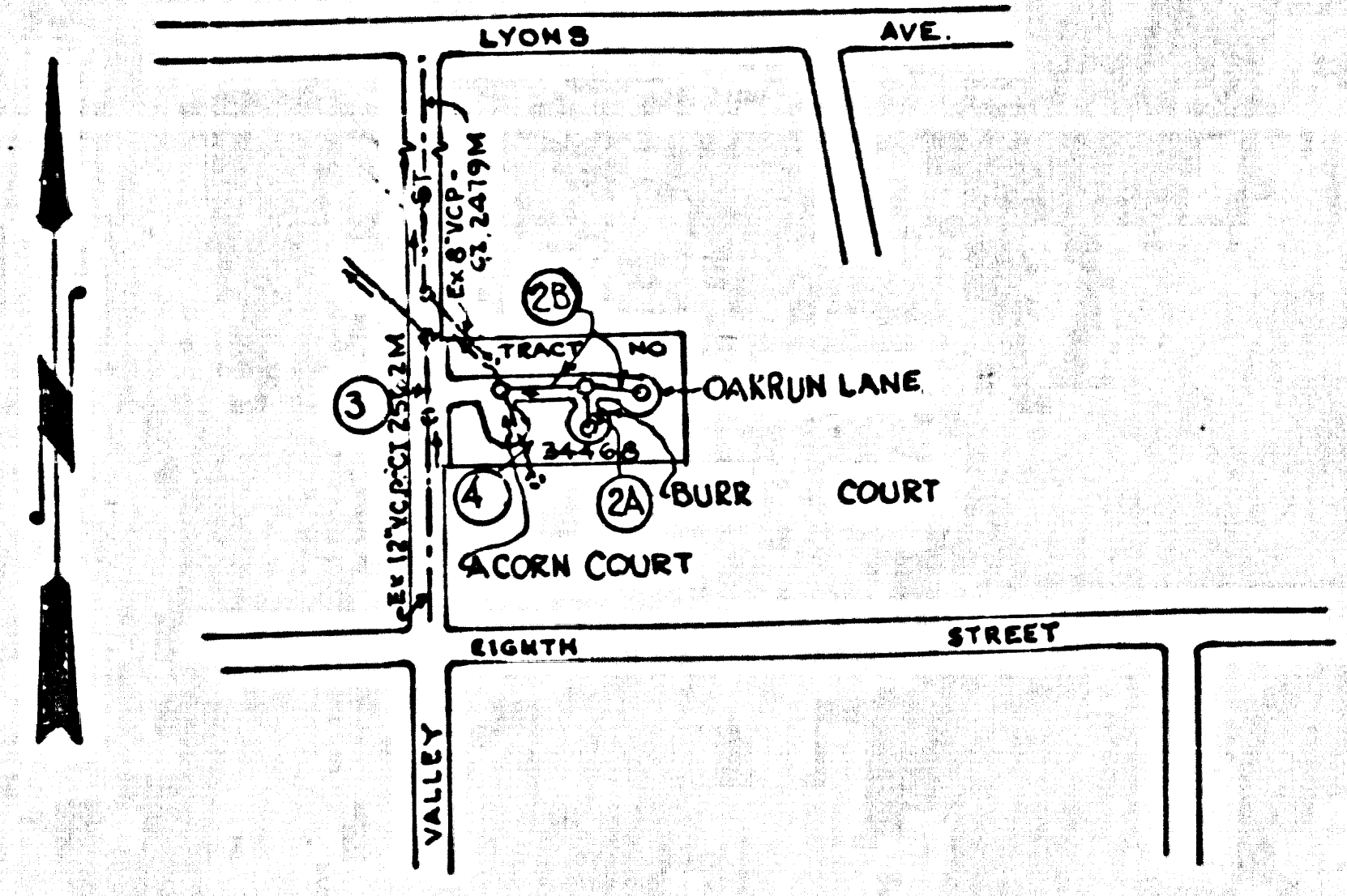
B.M. BL 811 ELEV. 1305.754  
 NEWHALL (1972) 1305.754 L & T CONC. WK. T.D.  
 HSE 23.60 6TH ST 40 FT. S C/L & 103 FT.  
 E C/L VALLEY ST MKD. BM NO BL 811  
 NEWHALL QUAD. 1972

STREET RESURFACING METHODS SHALL BE IN ACCORDANCE WITH SECTION 306-1.12.0 OF THE SPECIAL PROVISIONS.  
 FINAL STREET RESURFACING IN ANY LOCATION SHALL BE COMPLETED WITHIN 30 DAYS AFTER COMPLETION OF TRENCH BACKFILL.  
 THE REPAIRS SHALL BE SEALED WITH RS-1 EMULSION AND 1/4" CRUSHED ROCK.  
 CONTRACTOR MUST PLACE TEMPORARY OR PERMANENT PAVEMENT IMMEDIATELY IN VALLEY STREET AT CONTRACTOR'S EXPENSE.

NOTE: ALL H.L.'S Y'S AND T'S TO BE 4" UNLESS OTHERWISE SPECIFIED.

PLAN REVISION NOTE

REVISION NO. 1 DATE 9/12/79  
 RELOCATED MH. FROM STA 5+47.64 TO STA 5+37.64 PAGE 2  
 APPROVED: *Ralph D. Dinehart* 9/13/79  
 OFFICE OF COUNTY ENGINEER



INDEX MAP  
 Scale 1"=600'  
 P.C. 9594  
 Tract No. 34468

NO CONNECTION FOR THE DISPOSAL OF INDUSTRIAL WASTES SHALL BE MADE TO SEWERS SHOWN ON THESE DRAWINGS UNLESS A PERMIT FOR INDUSTRIAL WASTE WATER DISCHARGE HAS BEEN ISSUED BY THE SANITATION DISTRICTS FOR SAID CONNECTION.  
 BEFORE BREAKING INTO OR CONSTRUCTION ON A COUNTY SANITATION DISTRICT SEWER AND PRIOR TO FINAL ACCEPTANCE OF THE PROJECT SANITATION DISTRICT ENGINEERS SHALL BE NOTIFIED BY PHONE 362-8600 SO THAT REQUIRED INSPECTION CAN BE MADE.

GENERAL NOTES:

- ELEVATIONS ARE IN FEET ABOVE U.S.C. & G.S. SEA LEVEL DATUM OF 1929.
- NO REVISIONS SHALL BE MADE IN THESE PLANS WITHOUT THE APPROVAL OF THE COUNTY ENGINEER.
- GRADES TO WHICH THIS IMPROVEMENT IS TO BE CONSTRUCTED ARE SHOWN ON PLANS AND PROFILES. GRADE POINTS FOR TOP OF CURBS, CENTER LINE OF STREETS, OR CENTER LINE OF ALLEYS ARE SHOWN BY CIRCLES ON PROFILES. AT ALL POINTS BETWEEN DESIGNATED POINTS THE GRADE SHALL BE ESTABLISHED SO AS TO CONFORM TO A STRAIGHT LINE DRAWN BETWEEN SAID DESIGNATED POINTS.
- THE PRIVATE ENGINEER SHALL FURNISH THE COUNTY ENGINEER WITH GRADE SHEETS AND STATIONING FOR ALL HOUSE LATERALS AND "T" OR "Y" BRANCHES AND SHALL PROVIDE STAKES FOR THEM AT THEIR PROPER LOCATIONS WITH STATIONING PLAINLY MARKED. ALL HOUSE LATERALS SHALL BE CONSTRUCTED IN A STRAIGHT ALIGNMENT IF RIGHT ANGLES FROM THE MAIN LINE SEWER EXCEPT AS SHOWN ON THE PLANS. HOUSE LATERALS FROM CHIMNEYS SHALL NOT HAVE AN ANGLE OF LESS THAN 45° WITH THE MAIN LINE SEWER. ANY CHANGE IN ALIGNMENT SHALL BE REQUESTED IN WRITING BY THE PRIVATE ENGINEER.
- THE PRIVATE ENGINEER SHALL FURNISH THE HOUSE LATERAL DEPTH AT THE PROPERTY LINE BELOW THE TOP OF CURB ELEVATION FOR EACH HOUSE LATERAL ON THE GRADE SHEET.
- BEFORE WORK CAN BE STARTED, THE CONTRACTOR MUST OBTAIN A PERMIT TO EXCAVATE IN COUNTY STREETS FROM THE L.A. COUNTY ROAD DEPT., DISTRICT OFFICE NO. 4, AND PAY A FEE TO THE COUNTY ENGINEER, 550 S. VERNON ST., L.A., TO COVER THE COST OF CONSTRUCTION INSPECTION AND RECORD PLANS.
- IF WORK IS TO BE DONE IN A STATE HIGHWAY, A PERMIT MUST BE OBTAINED FROM THE STATE OF CALIFORNIA, DIVISION OF HIGHWAYS, 126 SOUTH SPRING STREET, LOS ANGELES, CALIFORNIA.
- APPROVAL OF THIS PLAN BY THE COUNTY OF LOS ANGELES DOES NOT CONSTITUTE A REPRESENTATION AS TO THE ACCURACY OF THE LOCATION OF OR THE EXISTENCE OR NON-EXISTENCE OF ANY UNDERGROUND UTILITY PIPE, OR STRUCTURE WITHIN THE LIMITS OF THIS PROJECT. THIS NOTE APPLIES TO ALL PAGES.
- REFER TO SECTION 7-18.4.3 OF THE STANDARD SPECIFICATIONS, REGARDING SAFETY ORDERS.
- PRIOR TO THE ISSUANCE OF A SEWER CONSTRUCTION PERMIT BY THE CITY ENGINEER, THE CONTRACTOR SHALL OBTAIN A "PERMIT TO EXCAVATE" FROM THE STATE OF CALIFORNIA DIVISION OF INDUSTRIAL SAFETY AND FILE WITH COUNTY ENR.
- CONTRACTOR SHALL FILE A CERTIFICATE OF LIABILITY INSURANCE WITH THE DEPT. OF COUNTY ENGINEER, 550 SOUTH VERNON, LOS ANGELES, CA. 90039, BEFORE WORKING AS THE CONTRACTOR NUMBER TO BE NOTIFIED 30 DAYS PRIOR TO CANCELLATION OR RENEWAL.

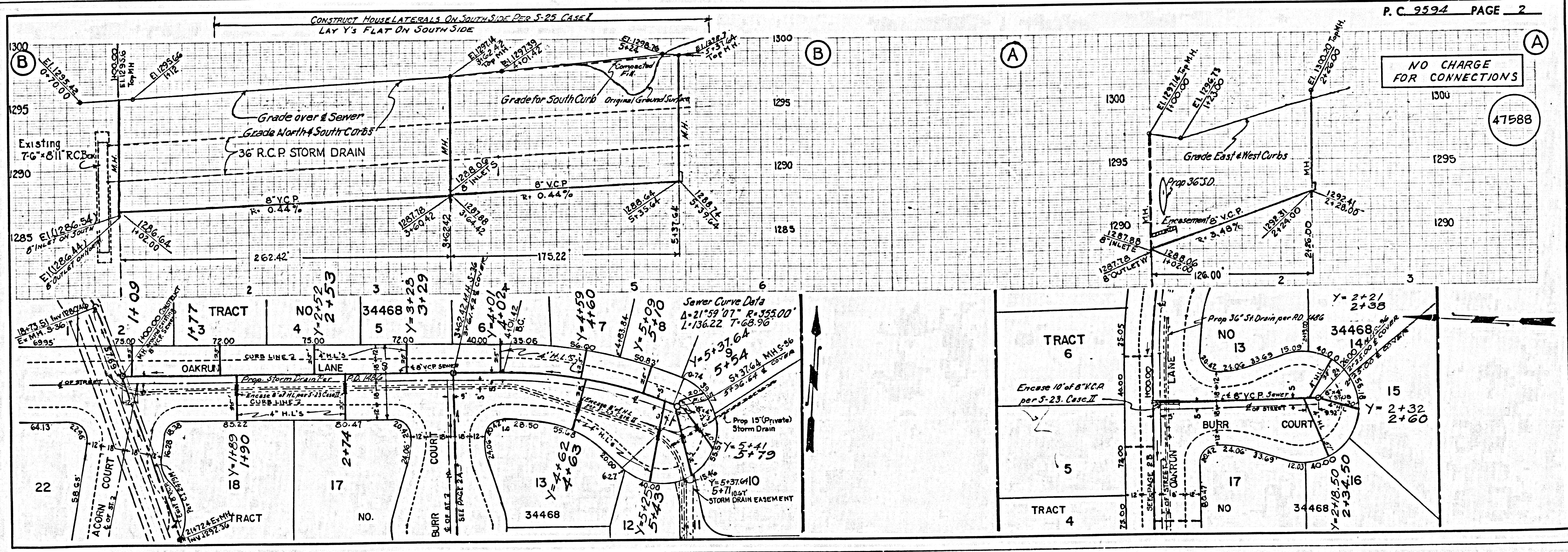
CONSTRUCTION NOTES:

- WORK SHALL BE CONSTRUCTED ACCORDING TO THE STANDARD SPECIFICATIONS FOR PUBLIC WORKS CONSTRUCTION (1976 EDITION) AND COUNTY ENGINEER SPECIAL PROVISIONS FOR THE CONSTRUCTION OF SANITARY SEWERS DATED SEPTEMBER 26, 1978, AND SHALL BE PROSECUTED ONLY IN THE PRESENCE OF THE COUNTY ENGINEER.
- THE CONTRACTOR SHALL NOTIFY THE ENVIRONMENTAL DEVELOPMENT DIVISION (215-974-7224) AT LEAST TWENTY-FOUR HOURS BEFORE STARTING ANY WORK UNDER THIS CONTRACT.
- HOUSE LATERALS TO BE CONSTRUCTED WITH INVERTS AT PROPERTY LINE 6 FEET BELOW CURB GRADE EXCEPT AS NOTED.
- WYE OR TE BRANCHES MAY BE USED FOR CONNECTIONS TO MANHOLE SEWERS EXCEPT AS NOTED.
- ALL STRUCTURES SHALL BE EITHER BRICK MANHOLES PER S-3 OR PRECAST CONCRETE MANHOLES PER S-3M, EXCEPT AS NOTED.
- PROVIDE STAKES ON THE PROPERTY LINE OR PROPERTY LINES PRODUCED AT RIGHT ANGLES TO THE SEWER LINE AT THE CENTER LINE OF EACH MANHOLE.
- MANHOLE TOPS IN UNIMPROVED RIGHTS OF WAY TO BE SIX INCHES ABOVE FINISHED GRADE.
- WITHER CLAY PIPE JOINTS SHALL BE TYPE "T", "F", OR "C" PER STANDARD SPECIFICATIONS SECTION 306-2.
- IF A POWER POLE IS WITHIN THREE FEET OF THE SEWER, THE SEWER SHALL BE ENCASED PER S-23, CASE II, TWO FEET ON EACH SIDE FROM THE POINT OF INTERFERENCE.
- IF DURING THE COURSE OF CONSTRUCTION IT IS DETERMINED THAT THERE IS LESS THAN FOUR FEET OF COVER OVER THE TOP OF A MAIN LINE OR HOUSE LATERAL V.C.P. SEWER WHICH IS NOT INDICATED ON THE PLANS, THE PIPE SHALL BE ENCASED PER S-23, CASE II UNLESS OTHERWISE APPROVED BY THE COUNTY ENGINEER.
- ALL JOINTS BETWEEN CAST IRON PIPE AND VITRIFIED CLAY PIPE SHALL BE MADE WITH A RUBBER SLEEVE JOINT, TYPE "C" OR "B", WITH BURNING IF NECESSARY PER STANDARD SPECIFICATIONS, SECTION 306-2.
- SEWERS TO BE TESTED FOR LEAKAGE PER SECTION 306-1.6 OF THE STANDARD SPECIFICATIONS AND SPECIAL PROVISIONS.
- REINFORCE ALL TRENCHES WITHIN PAVED AREAS TO MEET L.A. COUNTY ROAD DEPT. OR CALIFORNIA STATE HIGHWAY REQUIREMENTS BY ACCORDANCE WITH PERMITS.
- FULL COMPLIANCE WITH SECTION 306-1.3.5 OF THE SPECIAL PROVISIONS WILL BE REQUIRED FOR BACKFILL IN STREETS. CERTIFICATION OF BACKFILL COMPACTION AND SAND EQUIVALENTS BY A QUALIFIED, REGISTERED TESTING LABORATORY SHALL BE PROVIDED BY THE PERMITTEE PRIOR TO THE ISSUANCE OF A CERTIFICATE OF PARTIAL ACCEPTANCE.

THE FOLLOWING LATEST REVISED STANDARD PLANS ON FILE IN THE OFFICE OF THE COUNTY ENGINEER SHALL APPLY IN THE CONSTRUCTION OF THIS PROJECT.

LEGEND	S-1
MINIMUM PUBLIC SAFETY REQUIREMENTS	S-2
BRICK MANHOLE	S-3
STANDARD MANHOLE SET	S-31
BEDDING FOR SEWER PIPE	S-31
CRADLING AND ENCASEMENT	S-23
WYE OR TE SUPPORT	S-23
ALLOWABLE TRENCH WIDTHS	S-23
LOCKING MANHOLE FRAMES AND COVERS	S-23
NON-REINFORCED PRECAST CONCRETE MANHOLE	S-23
SPECIAL HOUSE LATERALS	S-23

COUNTY OF LOS ANGELES, CALIFORNIA  
 STEPHEN J. KOONCE COUNTY ENGINEER JOHN D. PARKHURST, CHIEF ENGINEER  
 APPROVED: *John D. Parkhurst* 9/13/79  
 REGIONAL ENGINEER (DATE) OFFICE ENGINEER  
 CHECKED: *Ralph D. Dinehart* 9/11/79  
 (DATE)  
 REG. C.E. NO. 16583  
 SANTA CLARITA BLDG. DIST. 8.2 I.N. 0358.02

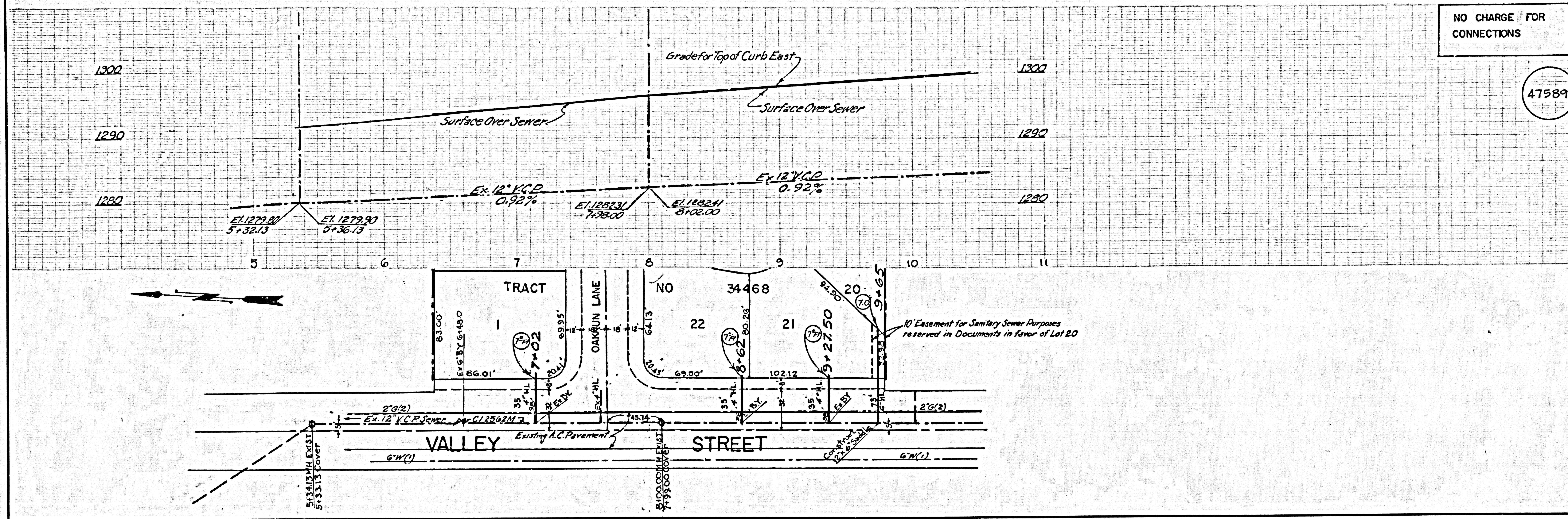


NO CHARGE FOR CONNECTIONS

47588

NO CHARGE FOR CONNECTIONS

47589



NO CHARGE FOR CONNECTIONS

47590

