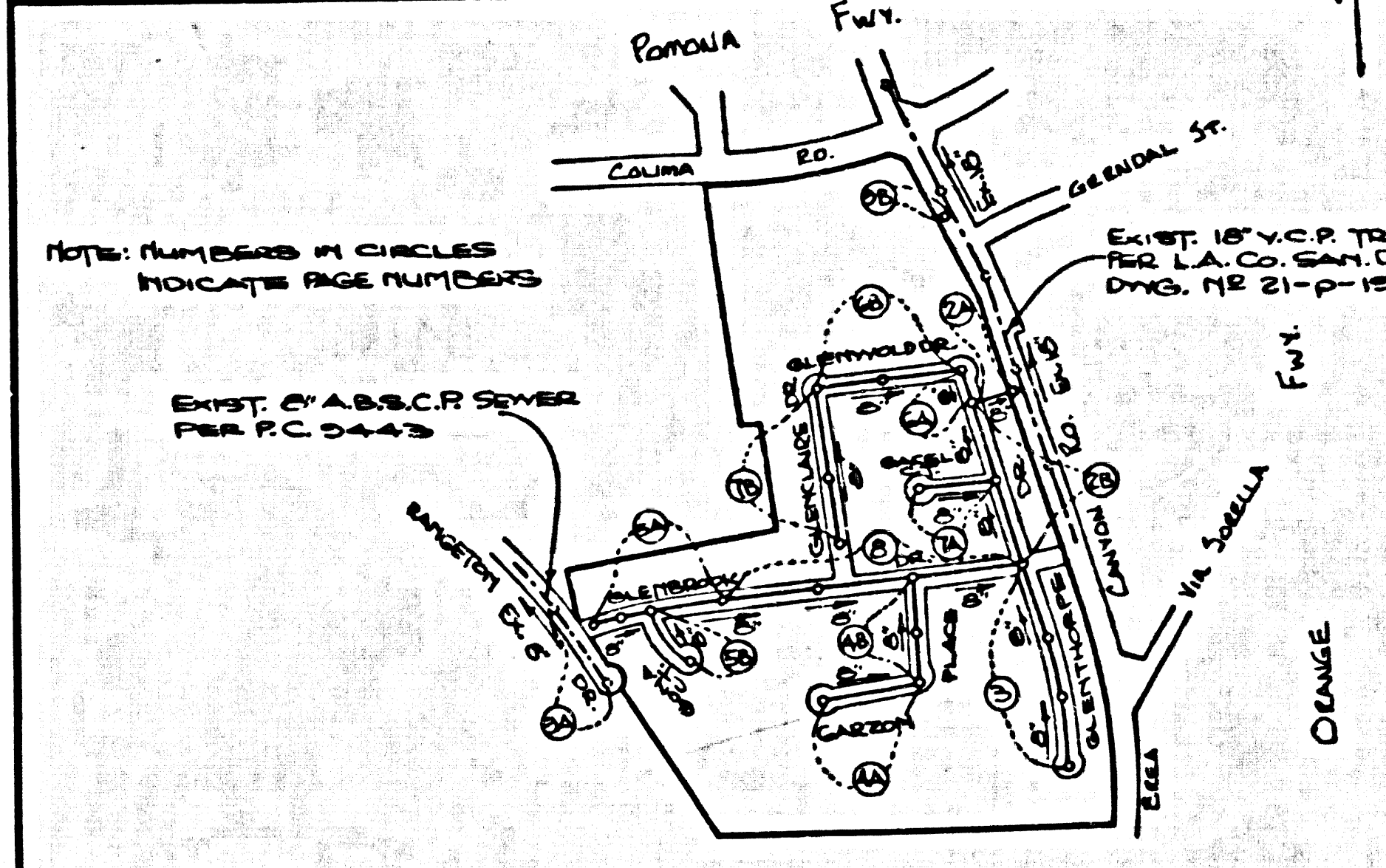


9.41.CE 3303 ELEV. 580.268  
 100M TAG IN CB 34 FT N BCR  
 12 FT W + 125 FT M C/L INT  
 OLD BREA CYN RD + COLIMA  
 RD  
 OTTERBEIN QUAD. 1915

**REVISIONS**  
 PAGE 2A: RELOCATE S.D. FROM BREA CYN. RD. TO GLENTHORPE DR., ELIMINATE ENCASUREMENT & ADD 20' L.P. OF C.I.P. @ 4% SLOPE. RELOCATE H.U.V. 7' LOTS 10 & 11 TO EASEMENT.  
 PAGE 2B: SHOW S.D. IN PLAN & PROFILE. ADD ENCASUREMENT @ WATER CROSSING.  
 PAGE 2C: SHOW S.D. IN PLAN & PROFILE. ADD ENCASUREMENT @ S.D. LATERAL CROSSING. RELOCATE H.U.V. 17' LOT 25.  
 PAGE 2D: ELIMINATE S.D. FROM BREA CYN. RD. & ENCASUREMENT.  
 APPROVED BY: Ralph David Smith 3/19/79  
 L.A. COUNTY ENGINEER DATE



NOTE: NUMBERS IN CIRCLES INDICATE PAGE NUMBERS  
 EXIST. 8" A.B.S.C.P. SEWER PER P.C. 3557

**PRIVATE ENGINEERS NOTICE TO CONTRACTORS**

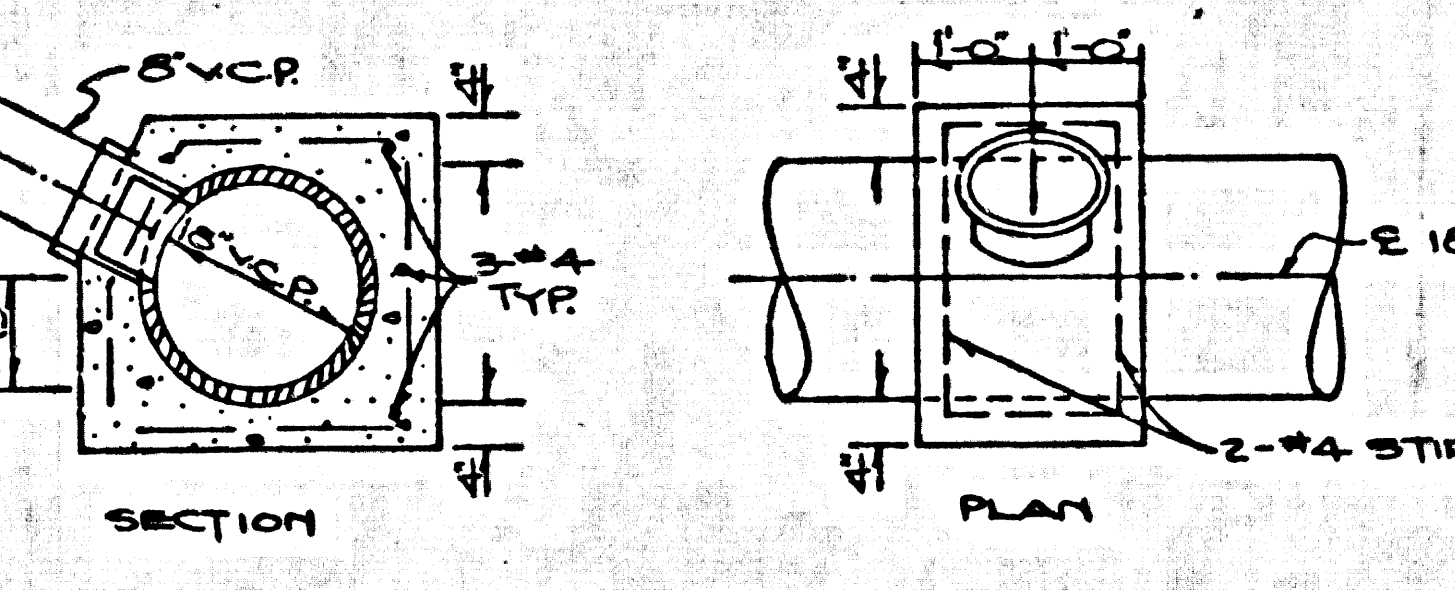
The existence and location of any underground utility pipes or structures shown on these plans are obtained by search of the available records. To the best of our knowledge there are no existing utilities except as shown on these plans. The contractor is required to take due precautionary measures to protect the utility lines shown and any other lines not of record or not shown on these plans.

*Ralph David Smith*  
 Registered Engineer R.C.E. 19233

BEFORE STARTING ANY CONSTRUCTION ON A COUNTY SANITATION DISTRICT SEWER AND PRIOR TO FINAL ACCEPTANCE OF THE PROJECT SANITATION DISTRICT INSPECTOR SHALL BE NOTIFIED BY PHONE 962-8000 THAT REQUIRED INSPECTION CAN BE MADE.

NO CONNECTION FOR THE DISPOSAL OF INDUSTRIAL WASTES SHALL BE MADE TO SEWERS SHOWN ON THESE PLANS UNLESS A PERMIT FOR INDUSTRIAL WASTE WATER'S SCHEMEL HAS BEEN ISSUED BY THE SANITATION DISTRICTS IND. SANO CONNECTION

- CONSTRUCTION NOTES CONT'D**
- FULL COMPLIANCE WITH PART 12 OF THE SPECIAL PROVISIONS IS REQUIRED FOR THE INSTALLATION OF A.B.S. COMPOSITE PIPE.
  - MANHOLE WATER STOP GASKETS & CLAMPS ARE REQUIRED FOR THE CONNECTION OF A.B.S. COMPOSITE PIPE TO MANHOLE STRUCTURES.
  - A.B.S. SOLID WALL PIPE MUST BE USED FOR WYE & LINES LATERAL CONNECTIONS TO A.B.S. COMPOSITE MAINLINE DRAINAGE PIPE.
  - (G2) INDICATES FLOW LINE OF HOUSE LATERAL AT PROPERTY LINE.



**GENERAL NOTES: DOUBLE SCALE**

- REVISIONS ARE IN FEET ABOVE U.S.C. & G.S. SEA LEVEL DATUM OF 1929.
- NO REVISIONS SHALL BE MADE IN THESE PLANS WITHOUT THE APPROVAL OF THE COUNTY ENGINEER.
- NO REPRESENTATIVE OF THE COUNTY ENGINEER WILL SURVEY OR SET OUT ANY PORTION OF THE WORK.
- GRADE TO WHICH THE IMPROVEMENT IS TO BE CONSTRUCTED ARE SHOWN ON PLANS AND PROFILE. GRADE POINTS FOR TOP OF CURBS, CENTER LINE OF STREETS, OR CENTER LINE OF ALLEYS ARE SHOWN BY CIRCLES ON PROFILES. AT ALL POINTS BETWEEN DESIGNATED POINTS THE GRADE SHALL BE ESTABLISHED AS TO CONFORM TO A STRAIGHT LINE BETWEEN SAID DESIGNATED POINTS.
- THE PRIVATE ENGINEER SHALL FURNISH THE COUNTY ENGINEER WITH GRADE SHEETS AND STATIONING FOR ALL HOUSE LATERALS AND "T" OR "Y" BRANCHES AND SHALL PROVIDE STAKES FOR THEM AT THEIR PROPOSED LOCATIONS WITH STATIONING PLANNED ALLEYS. ALL HOUSE LATERALS SHALL BE CONSTRUCTED IN A STRAIGHT ALIGNMENT AT RIGHT ANGLES FROM THE MAIN LINE SEWER EXCEPT AS SHOWN ON THE PLANS. HOUSE LATERALS FROM CHIMNEYS SHALL NOT HAVE AN ANGLE OF LESS THAN 45° WITH THE MAIN LINE SEWER. ANY CHANGE IN ALIGNMENT SHALL BE REQUESTED IN WRITING BY THE PRIVATE ENGINEER.
- THE PRIVATE ENGINEER SHALL FURNISH THE HOUSE LATERAL DATA AT THE PROPERTY LINE BELOW THE TOP OF CURB ELEVATION FOR EACH HOUSE LATERAL ON THE GRADE SHEET.
- BEFORE WORK CAN BE STARTED, THE CONTRACTOR MUST OBTAIN A PERMIT TO EXCAVATE IN COUNTY STREETS FROM THE L.A. COUNTY ROAD DEPT., DISTRICT OFFICE NO. 1, AND PAY A FEE TO THE COUNTY ENGINEER, 201 E. 5TH ST., 2ND FLOOR, REGIONAL OFFICE, TO COVER THE COST OF CONSTRUCTION INSPECTION AND RECORD PLANS.
- IF WORK IS TO BE DONE IN A STATE HIGHWAY, A PERMIT MUST BE OBTAINED FROM THE STATE OF CALIFORNIA, DIVISION OF HIGHWAYS, 120 SOUTH BRIDGE STREET, LOS ANGELES, CALIFORNIA.
- APPROVAL OF THIS PLAN BY THE COUNTY OF LOS ANGELES DOES NOT CONSTITUTE A REPRESENTATION AS TO THE ACCURACY OF THE LOCATION OF OR THE EXISTENCE OR NON-EXISTENCE OF ANY UNDERGROUND UTILITY PIPES, OR STRUCTURE WITHIN THE LIMITS OF THIS PROJECT. THIS NOTE APPLIES TO ALL PAGES.
- REFER TO SECTION 7-18.4.1 OF THE STANDARD SPECIFICATIONS, REGARDING SAFETY SIGNS.
- PRIOR TO THE INSTALLATION OF THIS RESIDENTIAL SEWER SYSTEM CONSTRUCTION PERMIT BY THE COUNTY ENGINEER, THE CONTRACTOR SHALL OBTAIN A PERMIT TO EXCAVATE FROM THE STATE OF CALIFORNIA DIVISION OF INDUSTRIAL SAFETY, & SHALL FILE A CERTIFICATE OF COMPLETION INSURANCE WITH THE COUNTY ENGINEER.

**CONSTRUCTION NOTES:**

- WORK SHALL BE CONSTRUCTED ACCORDING TO THE STANDARD SPECIFICATIONS FOR PUBLIC WORKS CONSTRUCTION (1978 EDITION) AND COUNTY ENGINEER SPECIAL PROVISIONS FOR THE CONSTRUCTION OF SANITARY SEWERS BATED (SECTION 21) AND SHALL BE CONSTRUCTED ONLY IN THE PRESENCE OF THE COUNTY ENGINEER.
- THE CONTRACTOR SHALL NOTIFY THE ENVIRONMENTAL DEVELOPMENT DIVISION (920) AT LEAST TWENTY-FOUR HOURS BEFORE STARTING ANY WORK UNDER THIS CONTRACT.
- HOUSE LATERALS TO BE CONSTRUCTED WITHIN PROPERTY LINE & SET BELOW CURB GRADE EXCEPT AS NOTED.
- ALL HOUSE LATERALS TO BE USED FOR CONNECTIONS TO MAINLINE SEWERS EXCEPT AS NOTED, THE "W.C.P." IS USED.
- ALL HOUSE LATERALS TO BE USED FOR CONNECTIONS TO MAINLINE SEWERS EXCEPT AS NOTED, THE "W.C.P." IS USED.
- PROVIDE STAKES ON THE PROPERTY LINE OR PROPERTY LINES PRODUCED AT RIGHT ANGLES TO THE SEWER LINE AT THE CENTER LINE OF EACH MANHOLE.
- MANHOLES FOR UNIMPROVED RIGHTS OF WAY TO BE SET INCHES ABOVE FINISHED GRADE.
- WITHIN CLAY PIPE JOINTS SHALL BE TYPE "T", "F", OR "P" PER STANDARD SPECIFICATIONS SECTION 300-2.
- IF A POWER POLE IS WITHIN THREE FEET OF THE SEWER, THE SEWER SHALL BE ENCASED, PER S-25, CASE 2, TWO FEET ON EACH SIDE FROM THE POINT OF INTERFERENCE.
- IF DURING THE COURSE OF CONSTRUCTION IT IS DETERMINED THAT THERE IS LESS THAN FOUR FEET OF COVER OVER THE TOP OF A MAIN LINE OR HOUSE LATERAL "Y" JOINTS WHICH IS NOT INDICATED ON THE PLANS, THE JOINT SHALL BE ENCASED PER S-25, CASE 2, UNLESS OTHERWISE APPROVED BY THE COUNTY ENGINEER.
- ALL JOINTS BETWEEN CLAY PIPE AND WITHIN CLAY PIPE SHALL BE MADE WITH A RUBBER SLEEVE JOINT, TYPE "C" OR "F", WITH GASKETS IF NECESSARY PER STANDARD SPECIFICATIONS, SECTION 300-2.
- SEWERS TO BE TESTED FOR LEAKAGE PER SECTION 300-1.4 OF THE STANDARD SPECIFICATIONS AND SPECIAL PROVISIONS.
- REINFORCE ALL TRENCHES WITHIN PAVED AREAS TO MEET L.A. COUNTY ROAD DEPT. OF CALIFORNIA STATE HIGHWAY REQUIREMENTS BY ACCORDANCE WITH PERMITS.
- FULL COMPLIANCE WITH SECTION 300-1.5 OF THE SPECIAL PROVISIONS WILL BE REQUIRED FOR SUCCESSFUL STREETS. CERTIFICATION OF SUCCESSFUL COMPACTION AND SAME EQUIVALENT BY A COLLARED, INSTRUMENTED TESTING LABORATORY SHALL BE PROVIDED BY THE CONTRACTOR PRIOR TO THE ISSUANCE OF A CERTIFICATE OF FINISH ACCEPTANCE.
- SPECIAL BACKFILL IN DESIGNATED AREAS: CATHARTIC, TORRELL & DELACROIX UTILITY BATHS OPERATED SO AS TO ACHIEVE THE MINIMUM OF FIVE (5) FEET OF COVER. ALL TRENCHES & SLOPES SHOWN ON THE GRADING PLAN APPROVED FOR THIS TRACT MAP BY THE COUNTY ENGINEER SHALL BE EXACTLY AS SHOWN. ALL TRENCHES SHALL BE CONSTRUCTED TO A MINIMUM OF FIVE (5) FEET OF COVER UNLESS OTHERWISE NOTED. ALL TRENCHES SHALL BE TESTED TO A MINIMUM OF FIVE (5) FEET OF COVER. ALL TRENCHES SHALL BE TESTED TO A MINIMUM OF FIVE (5) FEET OF COVER. ALL TRENCHES SHALL BE TESTED TO A MINIMUM OF FIVE (5) FEET OF COVER.

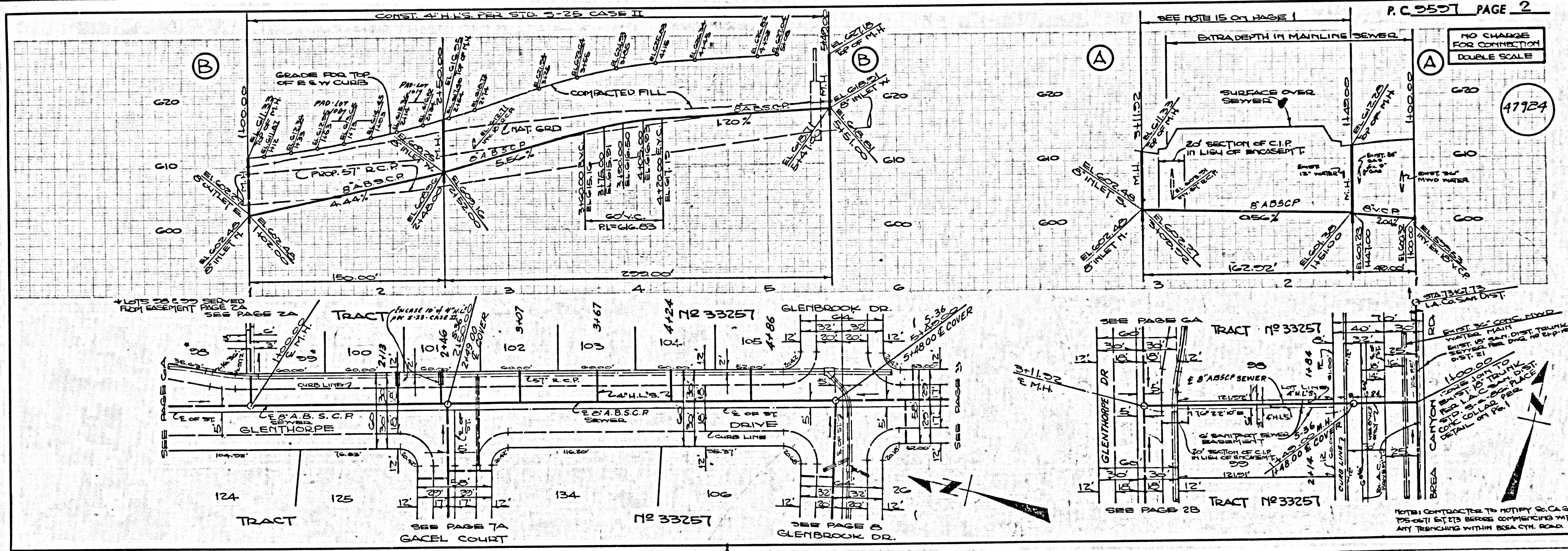
TO BE CONSTRUCTED IN  
**TRACT NO. 33257**  
 PRIVATE CONTRACT NO. 3557

W.S. 30 53-4  
 5 SHEETS, 9 PAGES  
 SCALE: VERT. 1"=6'  
 HORIZ. 1"=40'  
 NOVEMBER, 1978  
 PREPARED IN THE OFFICES OF  
 LIND & HILLERD, INC.  
 3055 HUNTINGTON DRIVE  
 SAN FRANCISCO, CA 94108  
 BY: *Ralph David Smith*  
 REG. C.E. No. 12233

THE FOLLOWING LATEST REVISED STANDARD PLANS ON FILE IN THE OFFICE OF THE COUNTY ENGINEER SHALL APPLY IN THE CONSTRUCTION OF THIS PROJECT.

MINIMUM PUBLIC SAFETY REQUIREMENTS	5-1
STANDARD MANHOLE STEP	5-2
REINFORCING FOR SEWER PIPE	5-3
CALLING AND BRACING	5-4
WYE OR TEE SUPPORT	5-5
ALLOWABLE TRENCH WIDTHS	5-6
DOCKING MANHOLE FRAMES AND COVERS	5-7
NON-REINFORCED PRECAST CONCRETE MANHOLES	5-8

COUNTY OF LOS ANGELES, CALIFORNIA  
 STEPHEN J. MOFFICE COUNTY ENGINEER JOHN D. PARKHURST, CHIEF ENGINEER  
 APPROVED *Ralph David Smith* 4/2/79 APPROVED *John D. Parkhurst* 4/2/79  
 REGIONAL ENGINEER DATE OFFICE ENGINEER  
 CHECKED *Ronald J. Volney* 4/2/79  
 DATE  
 REG. C.E. NO. 10655A  
 LA PUENTE BLDG. DIST. 2-D J.N.0350.02



PAGE 09 TRACT 46 33257

47923

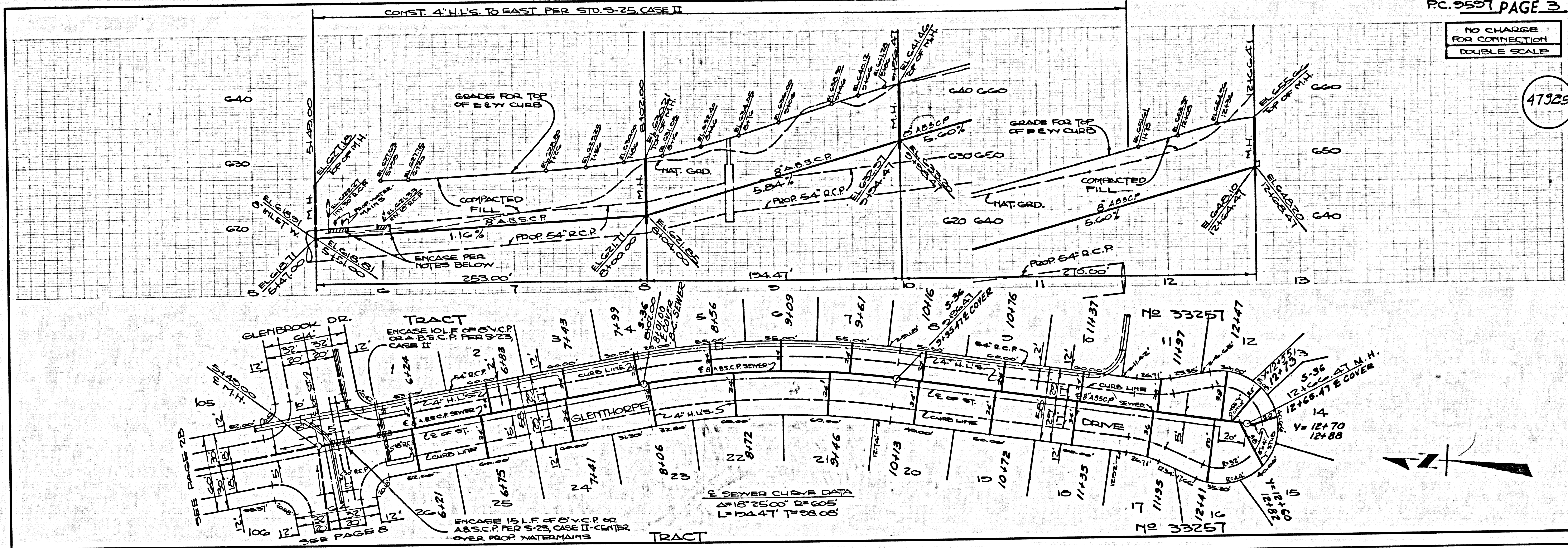
47924

SH 15'



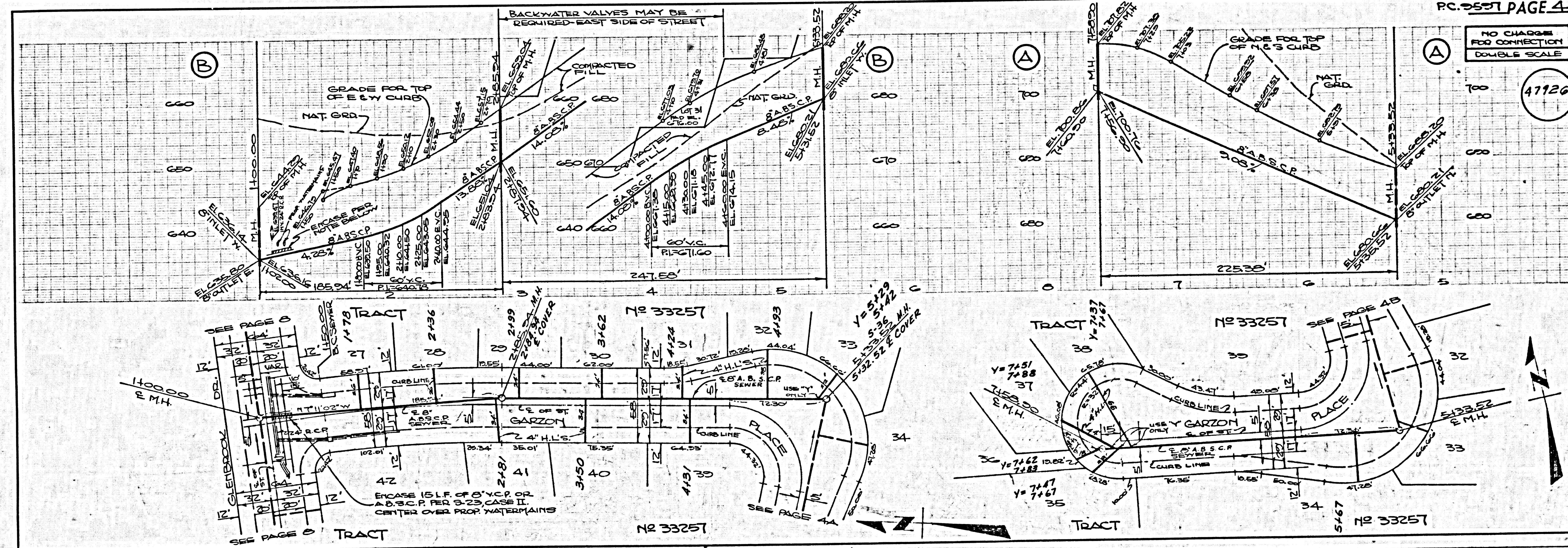
NO CHARGE FOR CONNECTION DOUBLE SCALE

47325



NO CHARGE FOR CONNECTION DOUBLE SCALE

47126



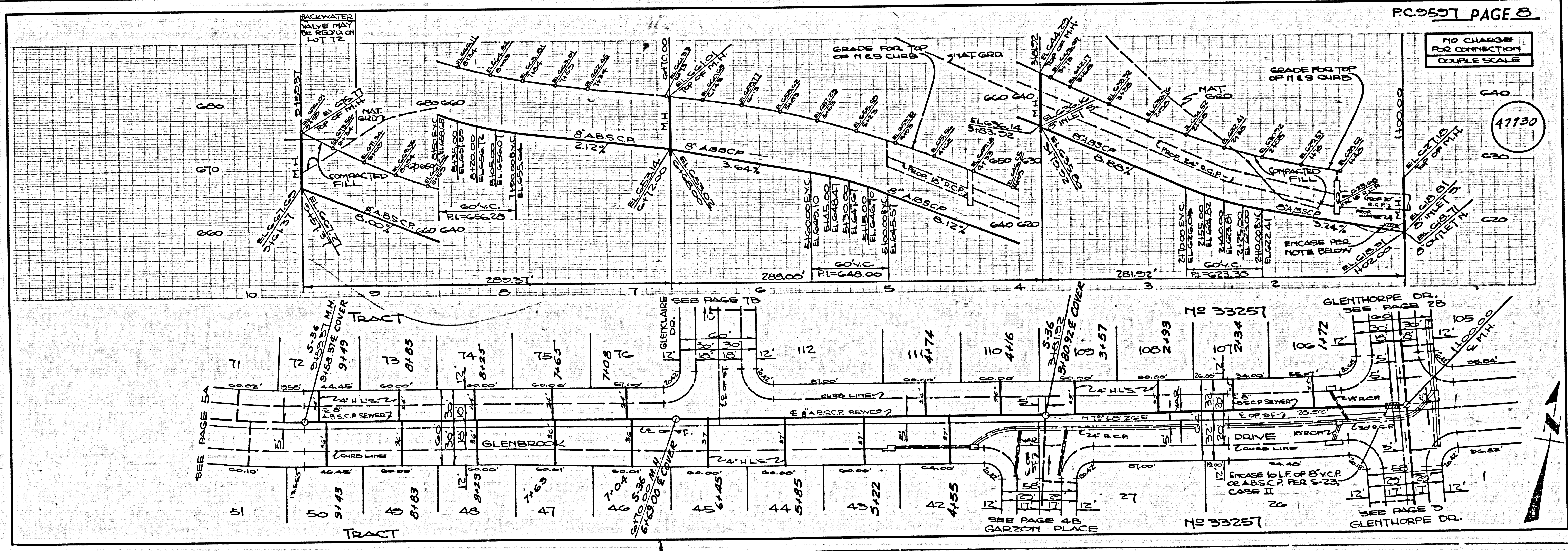
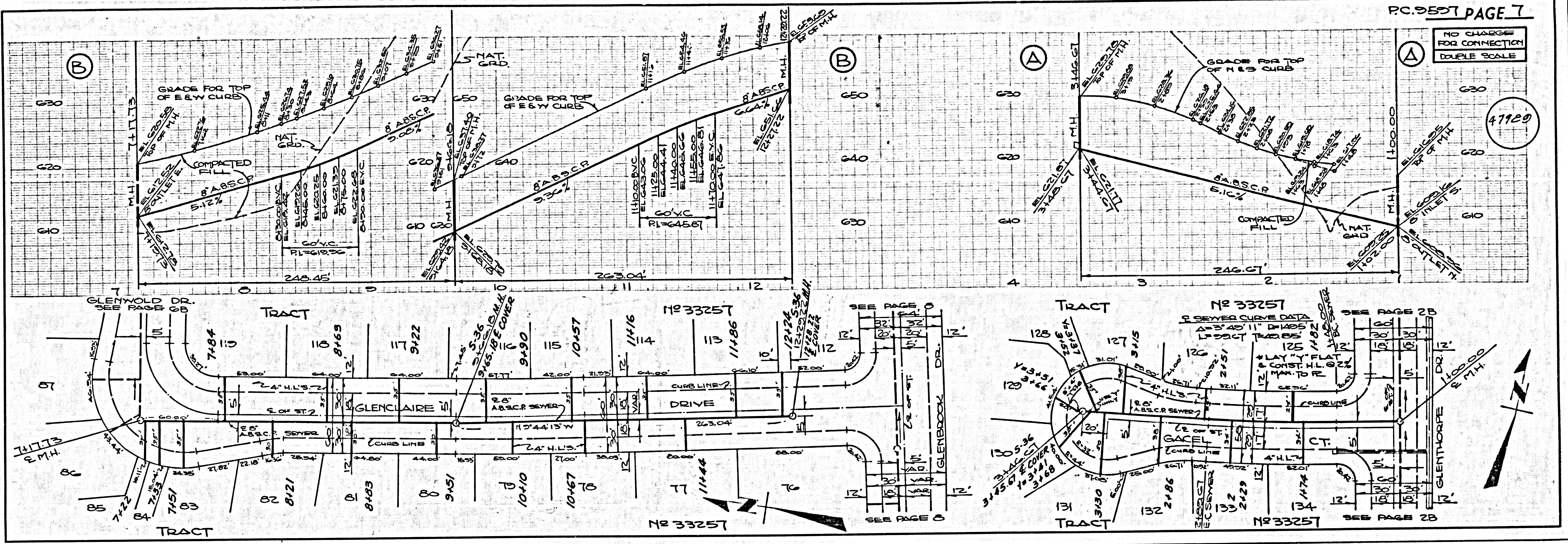
PC 9557 PAGE 3

SH 15"









L.A. COUNTY SEWER SHEET NO. 2 SOUTHERN CALIFORNIA BLUEPRINT CO. 222 11-77

TRASS 94 TRAST

4

R 54

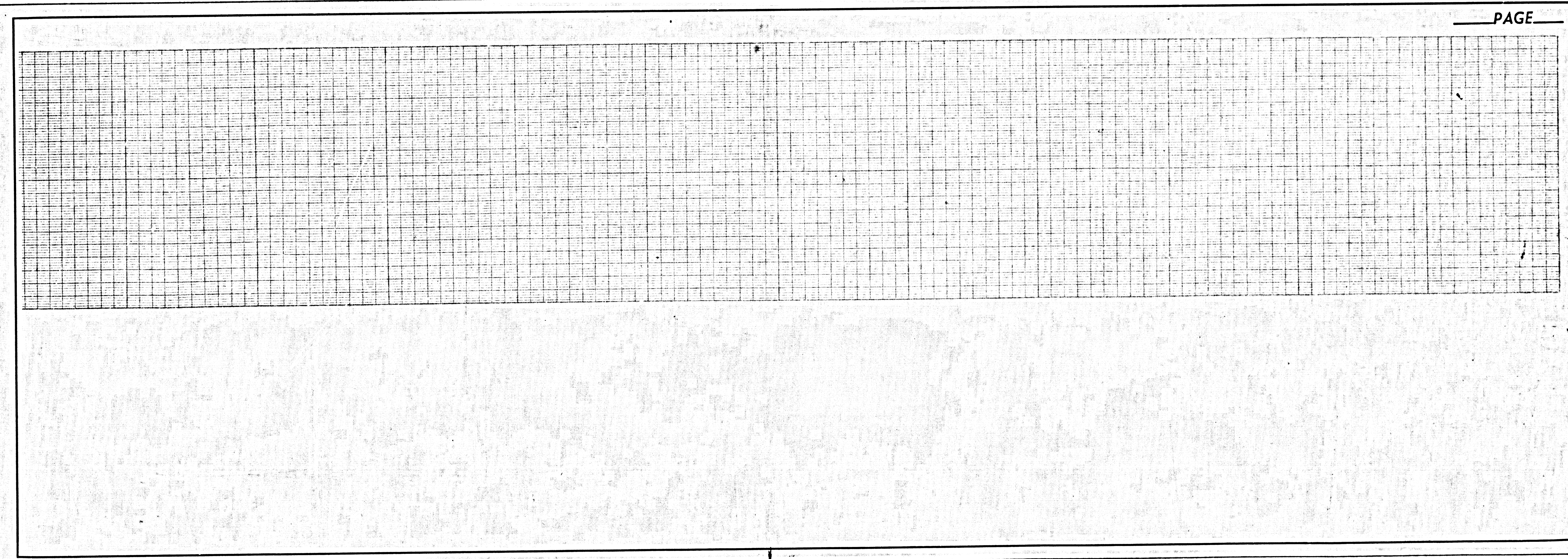
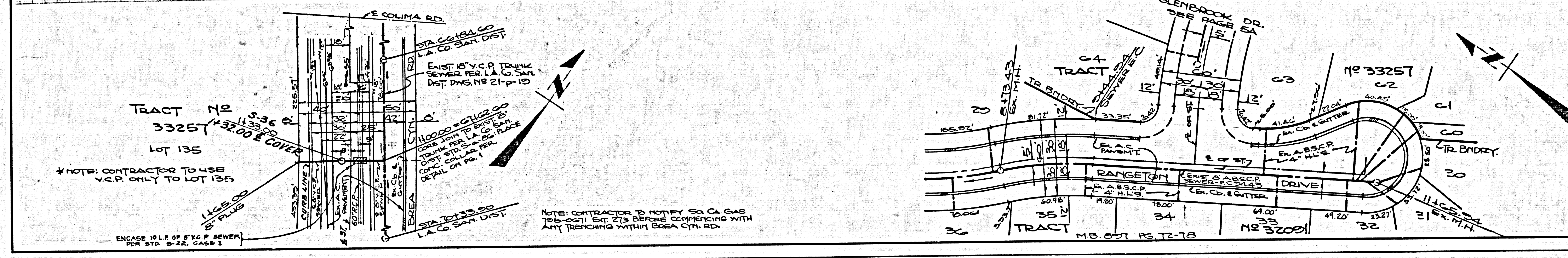
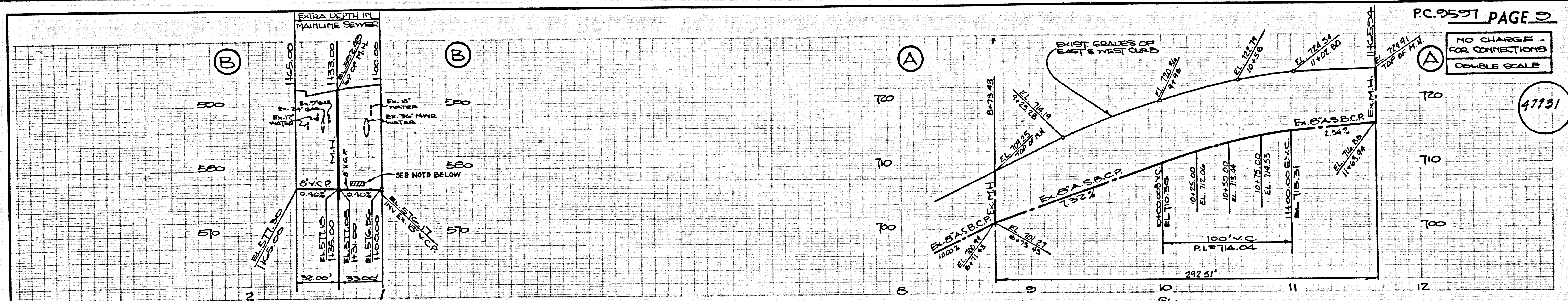
NB

HN

HN NB

SH 16'





SH HB HN HW HB SH 11'