

TO BE CONSTRUCTED IN  
**PARCEL MAP 7557.**

**PRIVATE CONTRACT NO. 9606**

47222

W.S. 1  
 2 SHEETS, 3 PAGES  
 SCALE: VERT. 1"=4'  
 HORIZ. 1"=40'  
 JULY, 1978  
 PREPARED IN THE OFFICES OF  
 SKRANO ENGINEERING ASSOCIATES  
 15230 BURBANK BLVD., VAN NUYS  
 CA 91411 (213) 787-0550  
 BY: *Naomi C. Ke...*  
 REG. C. E. No. 21873

THE FOLLOWING LATEST REVISED STANDARD PLANS ON FILE IN THE OFFICE OF THE COUNTY ENGINEER SHALL APPLY IN THE CONSTRUCTION OF THIS PROJECT.

LOGS	5-1
MINIMUM PUBLIC SAFETY REQUIREMENTS	5-2
BACK MANHOLES	5-3
STANDARD MANHOLE SETS	5-7
SETTING FOR SEWER PIPE	5-21
CHASING AND ENCASUREMENT	5-23
WYE OR THE SUPPORT	5-26
ALLOWABLE TRENCH WIDTHS	5-29
LOCKING MANHOLE PLANS AND COVERS	5-33
NON-REINFORCED PRECAST CONCRETE MANHOLES	5-38

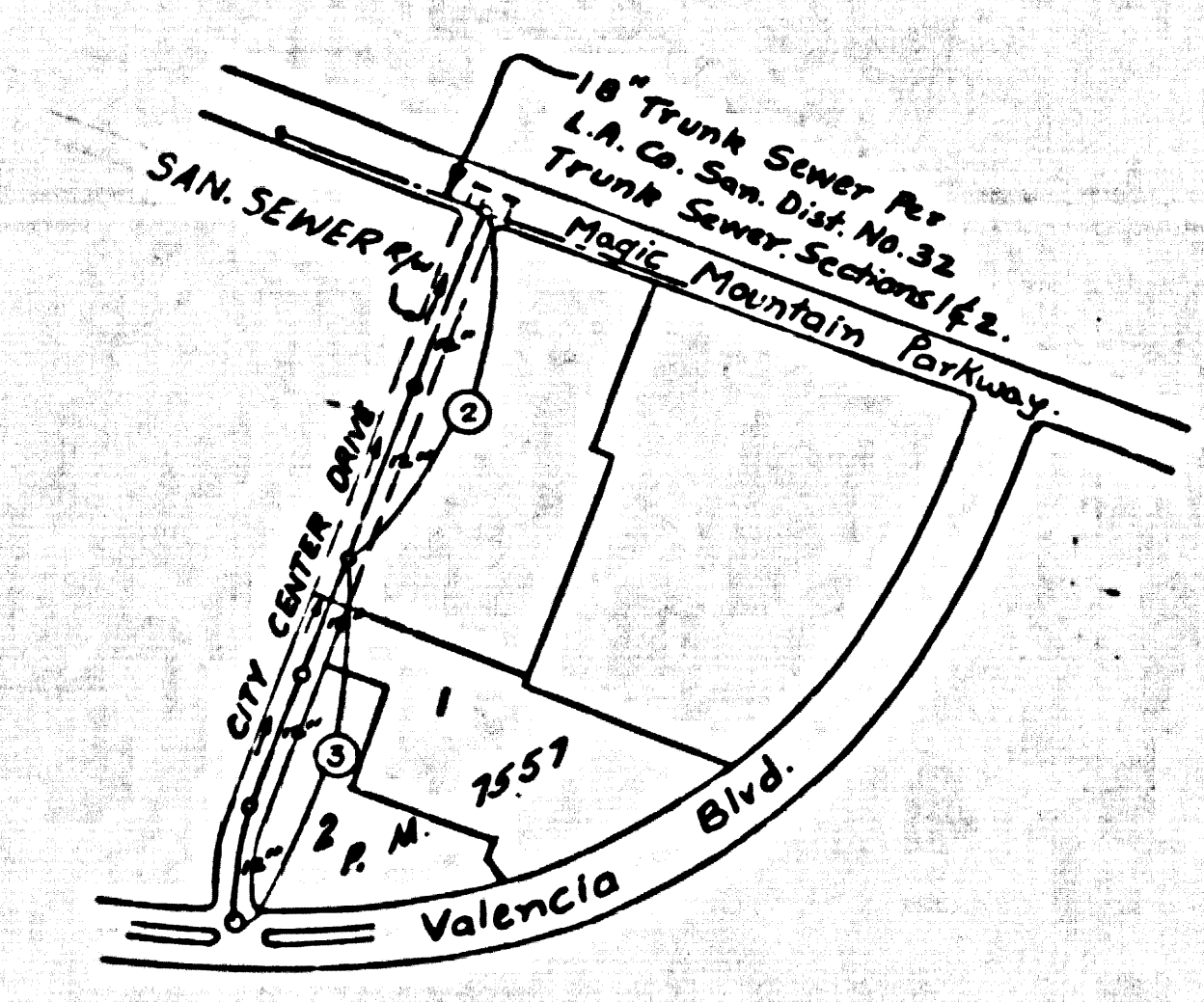
COUNTY OF LOS ANGELES, CALIFORNIA  
 STEPHEN J. KOONCE, COUNTY ENGINEER W. E. GARRISON, CHIEF ENGINEER  
 CO. SAN DIST. NO. 32  
 APPROVED *Golden W. Ke...* 2-8-78 APPROVED *David W. Ke...*  
 DATE 2/8/78 DATE 2/8/78  
 CHECKED *Martin L. Murphy* 2-8-78  
 DATE 2/8/78  
 REG. C. E. NO. 18574  
 SANTA CLARITA VALLEY BLDG. DIST. 82 I.N. 035813

- GENERAL NOTES:**
- ELEVATIONS ARE IN FEET ABOVE U.S.C. & G.S. SEA LEVEL DATUM OF 1929.
  - NO REVISIONS SHALL BE MADE IN THESE PLANS WITHOUT THE APPROVAL OF THE COUNTY ENGINEER.
  - NO REPRESENTATIVE OF THE COUNTY ENGINEER WILL SURVEY OR LAY OUT ANY PORTION OF THE WORK.
  - GRADES TO WHICH THIS IMPROVEMENT IS TO BE CONSTRUCTED ARE SHOWN ON PLANS AND PROFILE. GRADE POINTS FOR TOP OF CURBS, CENTER LINE OF STREETS, OR CENTER LINE OF ALLEYS ARE SHOWN BY CIRCLES ON PROFILE. AT ALL POINTS BETWEEN DESIGNATED POINTS THE GRADE SHALL BE ESTABLISHED SO AS TO CONFORM TO A STRAIGHT LINE DRAWN BETWEEN SAID DESIGNATED POINTS.
  - THE PRIVATE ENGINEER SHALL FURNISH THE COUNTY ENGINEER WITH GRADE SHEETS AND STATIONING FOR ALL HOUSE LATERALS AND "T" OR "Y" BRANCHES AND SHALL PROVIDE STAKES FOR THEM AT THEIR PROPER LOCATIONS WITH STATIONING PLAINLY MARKED. ALL HOUSE LATERALS SHALL BE CONSTRUCTED IN A STRAIGHT ALIGNMENT AT RIGHT ANGLES FROM THE MAIN LINE SEWER EXCEPT AS SHOWN ON THE PLANS. HOUSE LATERALS FROM CHIMNEYS SHALL NOT HAVE AN ANGLE OF FEET MORE THAN 45° WITH THE MAIN LINE SEWER. ANY CHANGE IN ALIGNMENT SHALL BE REQUESTED IN WRITING BY THE PRIVATE ENGINEER.
  - THE PRIVATE ENGINEER SHALL FURNISH THE HOUSE LATERAL DEPTH AT THE PROPERTY LINE BELOW THE TOP OF CURB ELEVATION FOR EACH HOUSE LATERAL ON THE GRADE SHEET.
  - BEFORE WORK CAN BE STARTED, THE CONTRACTOR MUST OBTAIN A PERMIT TO EXCAVATE IN COUNTY STREETS FROM THE L.A. COUNTY ROAD DEPT., DISTRICT OFFICE NO. 8, AND PAY A FEE TO THE COUNTY ENGINEER, \$50.00 PER 100' OF ROADWAY, TO COVER THE COST OF CONSTRUCTION INSPECTION AND RECORD PLANS.
  - IF WORK IS TO BE DONE IN A STATE HIGHWAY, A PERMIT MUST BE OBTAINED FROM THE STATE OF CALIFORNIA, DIVISION OF HIGHWAYS, 130 SOUTH SPRING STREET, LOS ANGELES, CALIFORNIA.
  - APPROVAL OF THIS PLAN BY THE COUNTY OF LOS ANGELES DOES NOT CONSTITUTE A REPRESENTATION AS TO THE ACCURACY OF THE LOCATION OF OR THE EXISTENCE OR NON-EXISTENCE OF ANY UNDERGROUND UTILITY PIPE, OR STRUCTURE WITHIN THE LIMITS OF THIS PROJECT. THIS NOTE APPLIES TO ALL PAGES.
  - REFER TO SECTION 7-18.4.3 OF THE STANDARD SPECIFICATIONS, REGARDING SAFETY SIGNALS.
  - PRIOR TO ISSUANCE OF THE REQUIRED SEWER CONSTRUCTION PERMIT, THE CONTRACTOR SHALL OBTAIN AND FILE WITH THE COUNTY ENGINEER COPIES OF A PERMIT TO EXCAVATE IN COUNTY STREETS FROM THE LOS ANGELES COUNTY DIVISION OF INDUSTRIAL SAFETY AND A TRENCHER FROM THE STATE OF CALIFORNIA DIVISION OF INDUSTRIAL SAFETY AND A CERTIFICATE OF WORKERS COMPENSATION INSURANCE WITH THE DEPARTMENT OF COUNTY ENGINEER, 8500 VERMONT, LOS ANGELES, CALIFORNIA 90020. THE WORKER'S COMPENSATION INSURANCE POLICY MUST BE NOTIFIED 30 DAYS PRIOR TO CANCELLATION OF POLICY.

- CONSTRUCTION NOTES:**
- WORK SHALL BE CONSTRUCTED ACCORDING TO THE STANDARD SPECIFICATIONS FOR PUBLIC WORKS CONSTRUCTION (1976 EDITION WITH 1978 SUPPLEMENTS) AND COUNTY ENGINEER SPECIAL PROVISIONS FOR THE CONSTRUCTION OF SANITARY SEWERS DATED 3/27/78 AND SHALL BE PROSECUTED ONLY IN THE PRESENCE OF THE COUNTY ENGINEER.
  - THE CONTRACTOR SHALL NOTIFY THE CIVIL DIVISION BY TELEPHONE, 974-7283, AT LEAST TWENTY-FOUR HOURS BEFORE STARTING ANY WORK UNDER THE CONTRACT.
  - HOUSE LATERALS TO BE CONSTRUCTED WITH INVERTS AT PROPERTY LINE 6 FEET BELOW CURB GRADE EXCEPT AS NOTED.
  - WYES OR THE BRANCHES MAY BE USED FOR CONNECTIONS TO MAINLINE SEWERS EXCEPT AS NOTED.
  - ALL STRUCTURES SHALL BE EITHER BRICK MANHOLES PER 5-3 OR PRECAST CONCRETE MANHOLES PER 5-38, EXCEPT AS NOTED.
  - PROVIDE STAKES ON THE PROPERTY LINE OR PROPERTY LINES PRODUCED AT RIGHT ANGLES TO THE SEWER LINE AT THE CENTER LINE OF EACH MANHOLE.
  - MANHOLES FOR UNIMPROVED RIGHTS OF WAY TO BE SIX INCHES ABOVE FINISHED GRADE.
  - WITHIN CLAY PIPE JOINTS SHALL BE TYPE "B", "T", OR "G" PER STANDARD SPECIFICATIONS SECTION 306-3.
  - IF A POWER POLE IS WITHIN THREE FEET OF THE SEWER, THE SEWER SHALL BE ENCASED, PER 5-28, CASE 3, TWO FEET ON EACH SIDE FROM THE POINT OF INTERFERENCE.
  - IF DURING THE COURSE OF CONSTRUCTION IT IS DETERMINED THAT THERE IS LESS THAN FOUR FEET OF COVER OVER THE TOP OF A MAIN LINE OR HOUSE LATERAL V.C.P. SEWER WHICH IS NOT INDICATED ON THE PLANS, THE PIPE SHALL BE ENCASED PER 5-28, CASE 3, UNLESS OTHERWISE APPROVED BY THE COUNTY ENGINEER.
  - ALL JOINTS BETWEEN CAST IRON PIPE AND VITRIFIED CLAY PIPE SHALL BE MADE WITH A RUBBER SLEEVE JOINT, TYPE "C" OR "D", WITH BURNING IF NECESSARY PER STANDARD SPECIFICATIONS SECTION 306-4.
  - SEWERS TO BE TESTED FOR LEAKAGE PER SECTION 306-1.9 OF THE STANDARD SPECIFICATIONS AND SPECIAL PROVISIONS.
  - RESURFACE ALL TRENCHES WITHIN PAVED AREAS TO MEET L.A. COUNTY ROAD DEPT. OR CALIFORNIA STATE HIGHWAY REQUIREMENTS IN ACCORDANCE WITH PERMITS.
  - FULL COMPLIANCE WITH SECTION 306-1.8.5 OF THE SPECIAL PROVISIONS WILL BE REQUIRED FOR BACKFILL IN STREETS. CERTIFICATION OF BACKFILL COMPACTION AND SAND EQUIVALENTS BY A QUALIFIED, REGISTERED TESTING LABORATORY SHALL BE PROVIDED BY THE PERMITTEE PRIOR TO THE ISSUANCE OF A CERTIFICATE OF PARTIAL ACCEPTANCE.

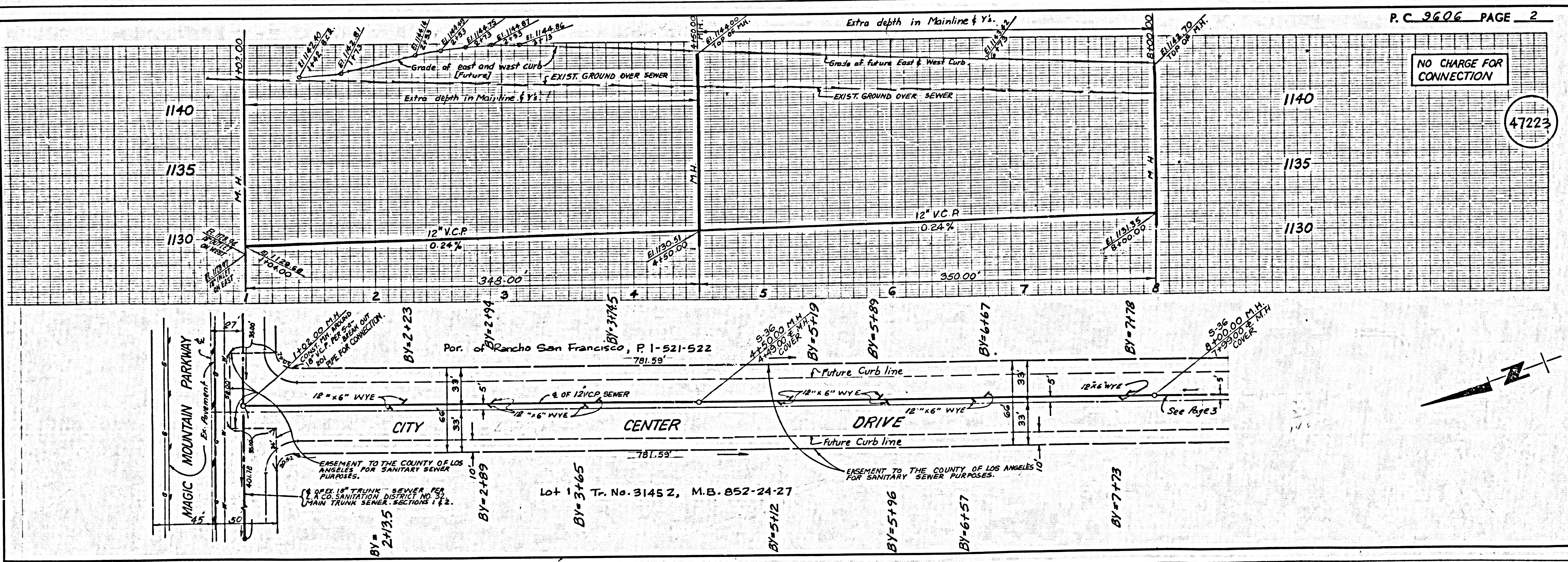
B.M. CL 2895 ELEV. 1150.184  
 RD. B.M. TAG W. CB. VALENCIA BLVD.  
 6' S. B.C.R. AT S.W. COR. MAGIC MT.  
 PKWY. AND VALENCIA BLVD. 97 FTS  
 4' 2" W & 6" INI.  
 NEWHALL QUAD. 1972.

REVISION NO. 1 - DELETED 80 L.F. OF 18" V.C.P.  
 MOVE M.H. FROM STA. 18+11.32  
 TO STA. 18+23.32 AT THE  
 INTERSECTION OF VALENCIA BLVD  
 & CENTER DRIVE.  
 APPROVED *Ralph David East* 6/24/79  
 R.C.E. 18893



INDEX MAP  
 SCALE: 1"=500'  
 P.C. 9606  
 NOTE: NUMBERS IN CIRCLES INDICATE PAGE NUMBER

BEFORE BREAKING INTO OR CONSTRUCTION ON A COUNTY SANITATION DISTRICT SEWER AND PRIOR TO FINAL ACCEPTANCE OF THE PROJECT SANITATION DISTRICT INSPECTOR SHALL BE NOTIFIED BY PHONE 952-8405, SO THAT REQUIRED INSPECTION CAN BE MADE.  
 NO CONNECTION FOR THE DISPOSAL OF INDUSTRIAL WASTES SHALL BE MADE TO SEWERS SHOWN ON THESE DRAWINGS UNTIL A PERMIT FOR INDUSTRIAL WASTE WATER DISCHARGE HAS BEEN ISSUED BY THE SANITATION DISTRICTS IN SAID CONNECTION.



NO CHARGE FOR CONNECTIONS

1140 47224

**CONTRACTOR'S NOTE.**  
 PRIOR TO CONSTRUCTION OF SEWER THE CONTRACTOR SHALL EXPOSE THE EXISTING UTILITIES TO VERIFY THE CLEARANCES SHOWN ON THIS PLAN. THE EXISTENCE, LOCATION OF ANY UNDERGROUND UTILITY PIPE OR STRUCTURE SHOWN ON THIS PLAN ARE OBTAINED BY SEARCH OF AVAILABLE RECORDS. THE CONTRACTOR IS RESPONSIBLE TO TAKE DUE PRECAUTIONARY MEASURES TO PROTECT UTILITY LINES SHOWN AND OTHER LINES NOT SHOWN OR NOT ON RECORD.

