

TO BE CONSTRUCTED IN
TRACT NO. 35026
PRIVATE CONTRACT NO. 9625

W.S. 39-C,3
 4 SHEETS, 7 PAGES
 SCALE: VERT. 1"=4' HORIZ. 1"=40'
 NOVEMBER, 1978
 PREPARED IN THE OFFICES OF
PFEILER & ASSOCIATES ENGINEERS
 1559 W. COMMONWEALTH AVE.
 FULLERTON, CA 92633 (714) 870-5850
 REG. C. E. No. 12907

47494

B.M. CG 5911 ELEV. 895.556

LOT IN EAST END C.B. 44'S. &
 36' W. & INT. GRAND AVE. &
 DIAMOND BAR BLVD. MKD. B.M. C-18
 OTTERBEIN QUAD. 19 75

CONSTRUCTION NOTES (Cont.)

14. FULL COMPLIANCE WITH PART III OF THE SPECIAL PROVISIONS IS REQUIRED FOR THE INSTALLATION OF A.B.S. COMPOSITE PIPE AND A.B.S. SOLID WALL HOUSE LATERALS.
17. MANHOLE WATER STOP GASKETS AND CLAMPS ARE REQUIRED FOR THE CONNECTION OF A.B.S. COMPOSITE PIPE TO MANHOLE STRUCTURES.
18. A.B.S. SOLID WALL PIPE MUST BE USED FOR VYS AND HOUSE LATERAL CONNECTIONS TO A.B.S. COMPOSITE MAINLINE SEWER PIPE.
19. 3-DIGREE DEFLECTION COUPLERS SHOULD BE USED TO ACCOMPLISH RADIUS OF CURVATURES LESS THAN 360°.
20. A.B.S. COM. PIPE SHALL BE BEDDED IN COURSE MANNE WITH THE TABLE IN SECTION B-3 OF PART III OF THE SPECIAL PROVISIONS.

BEFORE INSTALLING INTO OR CONSTRUCTION ON A COUNTY SANITATION DISTRICT SEWER AND PRIOR TO FINAL ACCEPTANCE OF THE PROJECT SANITATION DISTRICT INSPECTOR SHALL BE NOTIFIED BY PHONE 562-8040 THAT REQUIRED INSPECTION CAN BE MADE.

NO CONNECTION FOR THE DISPOSAL OF INDUSTRIAL WASTES SHALL BE MADE TO SEWERS SHOWN ON THESE DRAWINGS UNTIL A PERMIT FOR INDUSTRIAL WASTE WATER DISCHARGE HAS BEEN ISSUED BY THE SANITATION DISTRICTS IN SAID CONNECTION.

GENERAL NOTES:

1. ELEVATIONS ARE IN FEET ABOVE U.S.C. & G.S. SEA LEVEL DATUM OF 1929.
2. NO REVISIONS SHALL BE MADE IN THESE PLANS WITHOUT THE APPROVAL OF THE COUNTY ENGINEER.
3. NO REPRESENTATIVE OF THE COUNTY ENGINEER WILL SURVEY OR LAY OUT ANY PORTION OF THE WORK.
4. GRADES TO WHICH THIS IMPROVEMENT IS TO BE CONSTRUCTED ARE SHOWN ON PLANS AND PROFILE. GRADE POINTS FOR TOP OF CURB, CENTER LINE OF STREETS, OR CENTER LINE OF ALLEYS ARE SHOWN BY CIRCLES ON PROFILE. AT ALL POINTS BETWEEN DESIGNATED POINTS THE GRADE SHALL BE ESTABLISHED SO AS TO CONFORM TO A STRAIGHT LINE DRAWN BETWEEN SAID DESIGNATED POINTS.
5. THE PRIVATE ENGINEER SHALL FURNISH THE COUNTY ENGINEER WITH GRADE SHEETS AND STATIONING FOR ALL HOUSE LATERALS AND "Y" OR "T" BRANCHES AND SHALL PROVIDE STAKES FOR THEM AT THEIR PROPER LOCATIONS WITH STATIONING PLAINLY MARKED. ALL HOUSE LATERALS SHALL BE CONSTRUCTED IN A STRAIGHT ALIGNMENT AT RIGHT ANGLES FROM THE MAIN LINE SEWER EXCEPT AS SHOWN ON THE PLANS. HOUSE LATERALS FROM CHIMNEYS SHALL NOT HAVE AN ANGLE OF LESS THAN 45° WITH THE MAIN LINE SEWER. ANY CHANGE IN ALIGNMENT SHALL BE REQUESTED IN WRITING BY THE PRIVATE ENGINEER.
6. THE PRIVATE ENGINEER SHALL FURNISH THE HOUSE LATERAL BIFITS AT THE PROPERTY LINE BELOW THE TOP OF CURB ELEVATION FOR EACH HOUSE LATERAL ON THE CYDNE SHEET.
7. BEFORE WORK CAN BE STARTED, THE CONTRACTOR MUST OBTAIN A PERMIT TO EXCAVATE IN COUNTY STREETS FROM THE L.A. COUNTY ROAD DEPT., DISTRICT OFFICE NO. 4, AND PAY A FEE TO THE COUNTY ENGINEER, DISTRICT OFFICE NO. 4, SAN DIMAS REGIONAL OFFICE, TO COVER THE COST OF CONSTRUCTION INSPECTION AND RECORD PLANS.
8. IF WORK IS TO BE DONE IN A STATE HIGHWAY, A PERMIT MUST BE OBTAINED FROM THE STATE OF CALIFORNIA, DIVISION OF HIGHWAYS, 130 SOUTH SPRING STREET, LOS ANGELES, CALIFORNIA.
9. APPROVAL OF THIS PLAN BY THE COUNTY OF LOS ANGELES DOES NOT CONSTITUTE A REPRESENTATION AS TO THE ACCURACY OF THE LOCATION OR OF THE EXISTENCE OR NON-EXISTENCE OF ANY UNDERGROUND UTILITY PIPE, OR STRUCTURE WITHIN THE LIMITS OF THE PROJECT. THIS NOTE APPLIES TO ALL PAGES.
10. REFER TO SECTION 7-10.4.1 OF THE STANDARD SPECIFICATIONS, REGARDING SAFETY ORDERS.
11. PRIOR TO THE BEGINNING OF THE REQUIRED SEWER CONSTRUCTION PERMIT BY THE COUNTY ENGINEER, THE CONTRACTOR SHALL OBTAIN A PERMIT TO EXCAVATE FROM THE STATE OF CALIFORNIA, DEPARTMENT OF INDUSTRIAL RELATIONS, DIVISION OF INDUSTRIAL SAFETY AND SHALL FILE A COPY OF WORKERS COMPENSATION INSURANCE WITH THE COUNTY ENGINEER.

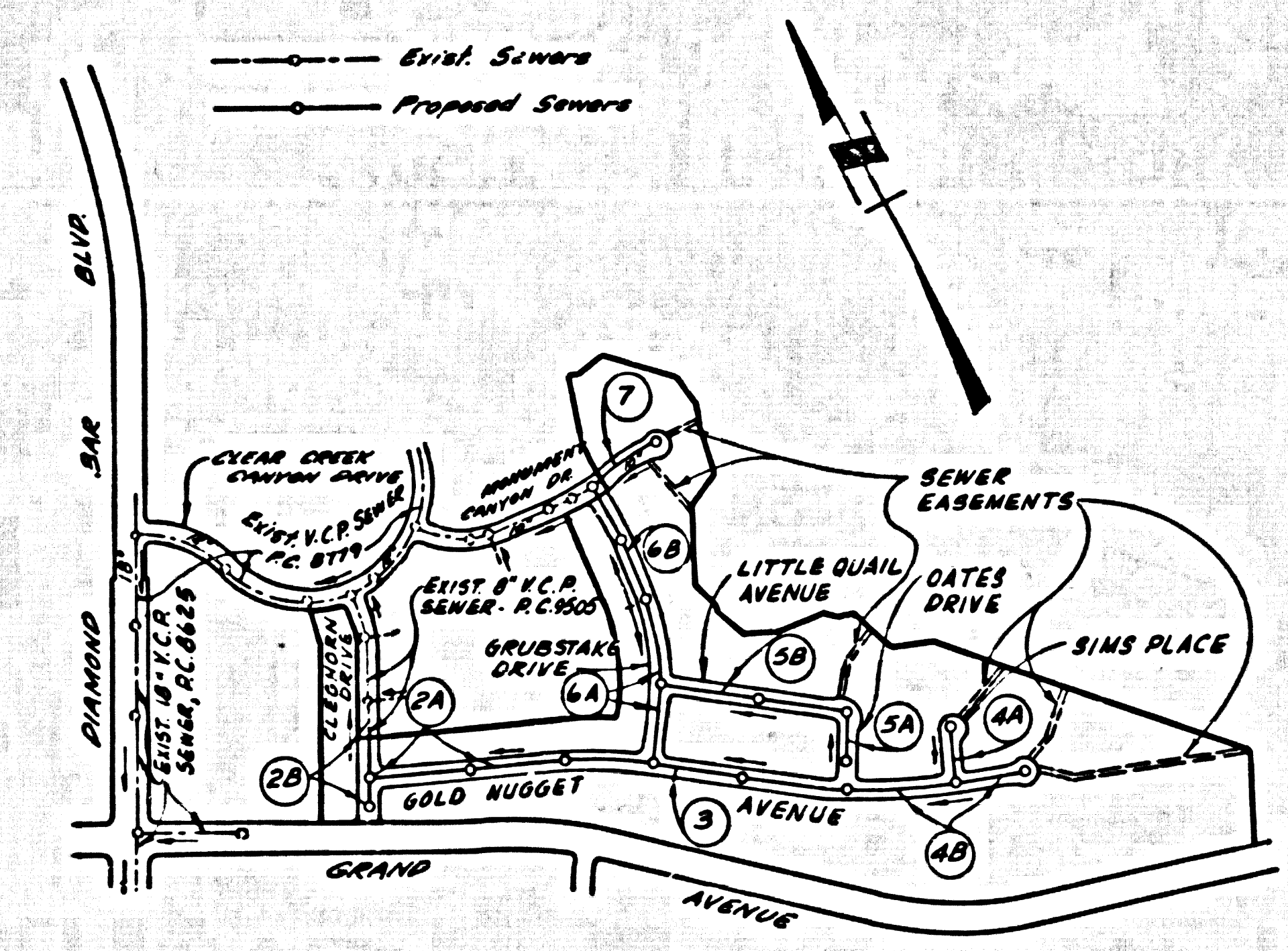
CONSTRUCTION NOTES:

1. WORK SHALL BE CONSTRUCTED ACCORDING TO THE STANDARD SPECIFICATIONS FOR PUBLIC WORKS CONSTRUCTION (1978 EDITION) AND THE COUNTY ENGINEER SPECIAL PROVISIONS FOR THE CONSTRUCTION OF SANITARY SEWERS DATED 11/19/78, AND SHALL BE PROSECUTED ONLY IN THE PRESENCE OF THE COUNTY ENGINEER.
2. THE CONTRACTOR SHALL NOTIFY THE ENVIRONMENTAL DEVELOPMENT DIVISION PHONE (818) 776-7828, AT LEAST TWENTY-FOUR HOURS BEFORE STARTING ANY WORK UNDER THIS CONTRACT.
3. HOUSE LATERALS TO BE CONSTRUCTED WITH INVERTS AT PROJECT LINE & 4 FEET BELOW CURB GRADE EXCEPT AS NOTED.
4. ALL TRENCHES SHALL BE PROTECTED BY 2" X 4" X 8" PLANKS OR 2" X 8" X 8" PLANKS AS SHOWN ON THE PLANS.
5. ALL STRUCTURES SHALL BE CONSTRUCTED WITH PRECAST CONCRETE MANHOLES PER S.D. SPEC. EXCEPT AS NOTED.
6. PROVIDE STAKES ON THE PROPERTY LINE OR PROPERTY LINES PRODUCED AT RIGHT ANGLES TO THE SEWER LINE AT THE CENTER LINE OF EACH MANHOLE.
7. MANHOLE TOPS IN UNIMPROVED RIGHTS OF WAY TO BE SIX INCHES ABOVE FINISHED GRADE.
8. VITRIFIED CLAY PIPE JOINTS SHALL BE TYPE "B", "T", OR "G" PER STANDARD SPECIFICATIONS SECTION 206-2.
9. IF A POWER POLE IS WITHIN THREE FEET OF THE SEWER, THE SEWER SHALL BE ENCASED, PER S.D. CASE II, TWO FEET ON EACH SIDE FROM THE POINT OF INTERFERENCE.
10. IF DURING THE COURSE OF CONSTRUCTION IT IS DETERMINED THAT THERE IS LESS THAN FOUR FEET OF COVER OVER THE TOP OF A MAIN LINE OR HOUSE LATERAL V.C.P. SEWER, OR A.B.S.C. SEWER WHICH IS NOT INDICATED ON THE PLANS, THE PIPE SHALL BE ENCASED PER S.D. CASE II, UNLESS OTHERWISE APPROVED BY THE COUNTY ENGINEER.
11. ALL JOINTS BETWEEN CAST IRON PIPE AND VITRIFIED CLAY PIPE SHALL BE MADE WITH A RUBBER SLEEVE JOINT, TYPE "C" OR "D", WITH GASKETING IF NECESSARY PER STANDARD SPECIFICATIONS, SECTION 206-2.
12. SEWERS TO BE TESTED FOR LEAKAGE PER SECTION 206-1.4 OF THE STANDARD SPECIFICATIONS AND SPECIAL PROVISIONS.
13. RESURFACE ALL TRENCHES WITHIN PAVED AREAS TO MEET L.A. COUNTY ROAD DEPT. OR CALIFORNIA STATE HIGHWAY REQUIREMENTS IN ACCORDANCE WITH PERMITS.
14. FULL COMPLIANCE WITH SECTION 206-1.8.B OF THE SPECIAL PROVISIONS WILL BE REQUIRED FOR BACKFILL IN STREETS. CERTIFICATION OF BACKFILL COMPACTION AND SAND EQUIVALENTS BY A QUALIFIED, REGISTERED TESTING LABORATORY SHALL BE PROVIDED BY THE PERMITTEE PRIOR TO THE ISSUANCE OF A CERTIFICATE OF PARTIAL ACCEPTANCE.
15. FINISH UTILITIES IN ADVANCE OF EXCAVATION FOR FIELD LOCATION OF EXISTING FACILITIES: ELECTRICITY BY CALIF. DIVISION OF THE LAND & WATER CONTROL DISTRICT #18 SAN DIMAS REGIONAL OFFICE; WATER BY CALIF. DIVISION OF THE LAND & WATER CONTROL DISTRICT #18 SAN DIMAS REGIONAL OFFICE; GAS BY CALIF. GAS CO. 740-985-9861; TELEPHONE BY GENERAL TELEPHONE CO. 918-567-5767 COLLECT.

THE FOLLOWING LATEST REVISED STANDARD PLANS ON FILE IN THE OFFICE OF THE COUNTY ENGINEER SHALL APPLY IN THE CONSTRUCTION OF THIS PROJECT:

LEGEND	5-1
MINIMUM PUBLIC SAFETY REQUIREMENTS	5-2
SIX INCH MANHOLE	5-3
STANDARD MANHOLE STEP	5-17
BEDDING FOR SEWER PIPE	5-21
CALLING AND ENCASEMENT	5-22
WYE OR T SUPPORT	5-26
ALLOWABLE TRENCH WIDTHS	5-28
LOCKING MANHOLE FRAME AND COVER	5-29
NON-REINFORCED PRECAST CONCRETE MANHOLE	5-30
BEDDING REQUIREMENTS FOR PLASTIC PIPE	5-31 REV.

COUNTY OF LOS ANGELES, CALIFORNIA
 STEPHEN J. KOONCE, COUNTY ENGINEER WALTER E. GARRISON, CHIEF ENGINEER
 APPROVED: *Walter E. Garrison* 4/19/79
 CHECKED: *Ralph David Riest* 4/18/79
 REG. C. E. No. 16883
 SAN DIMAS BLDG. DIST. 10-90 J.N. 035802

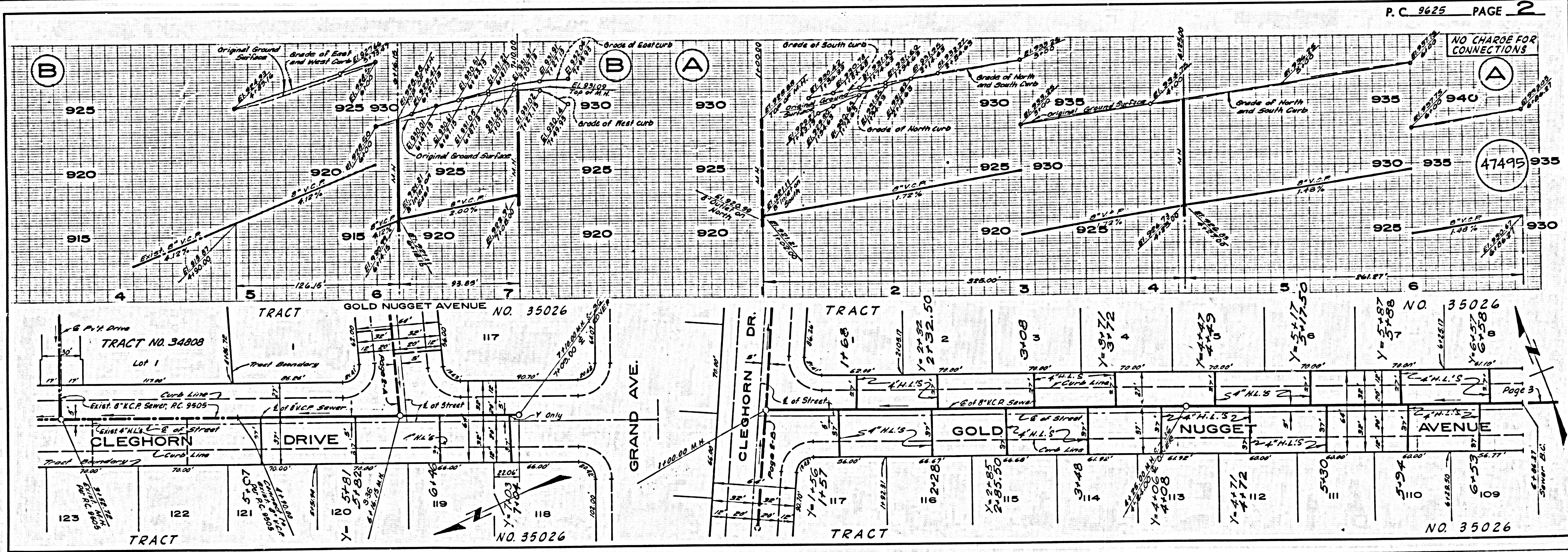


INDEX MAP
 Scale: 1" = 600'
 P.C. 9625

NOTE: NUMBERS IN CIRCLES INDICATE PAGE NUMBERS

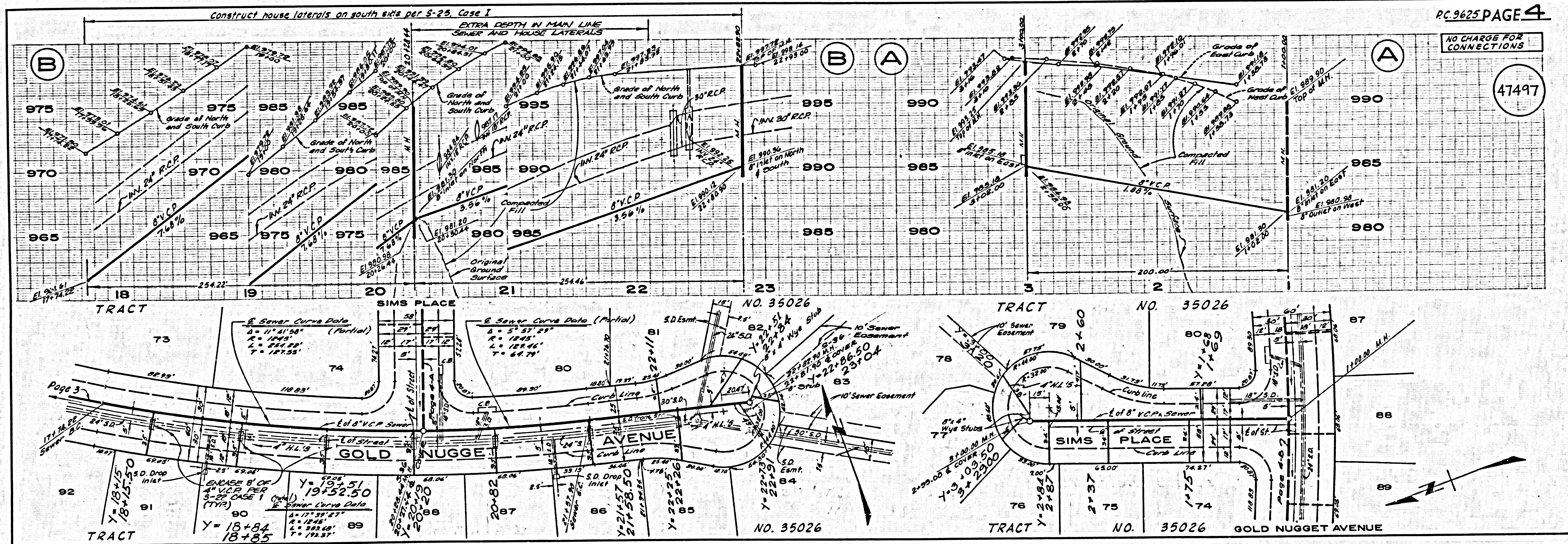
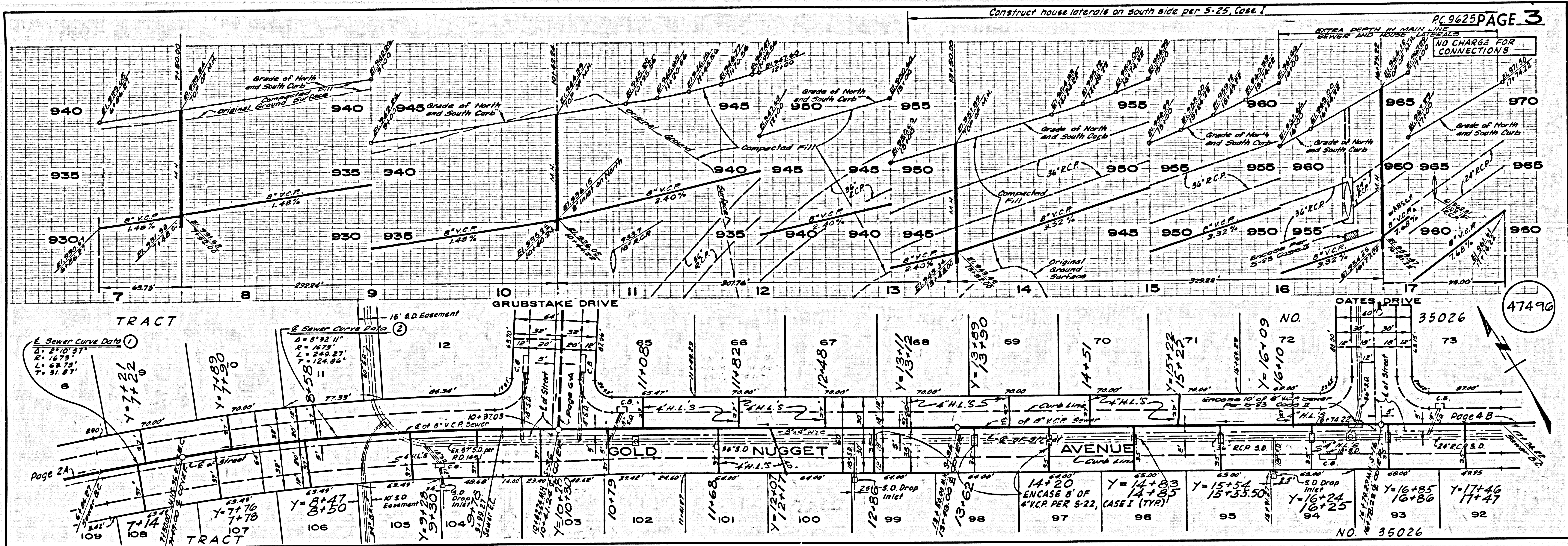
ISSUE NO PERMITS UNTIL
 P.C. 9505 IS ACCEPTED

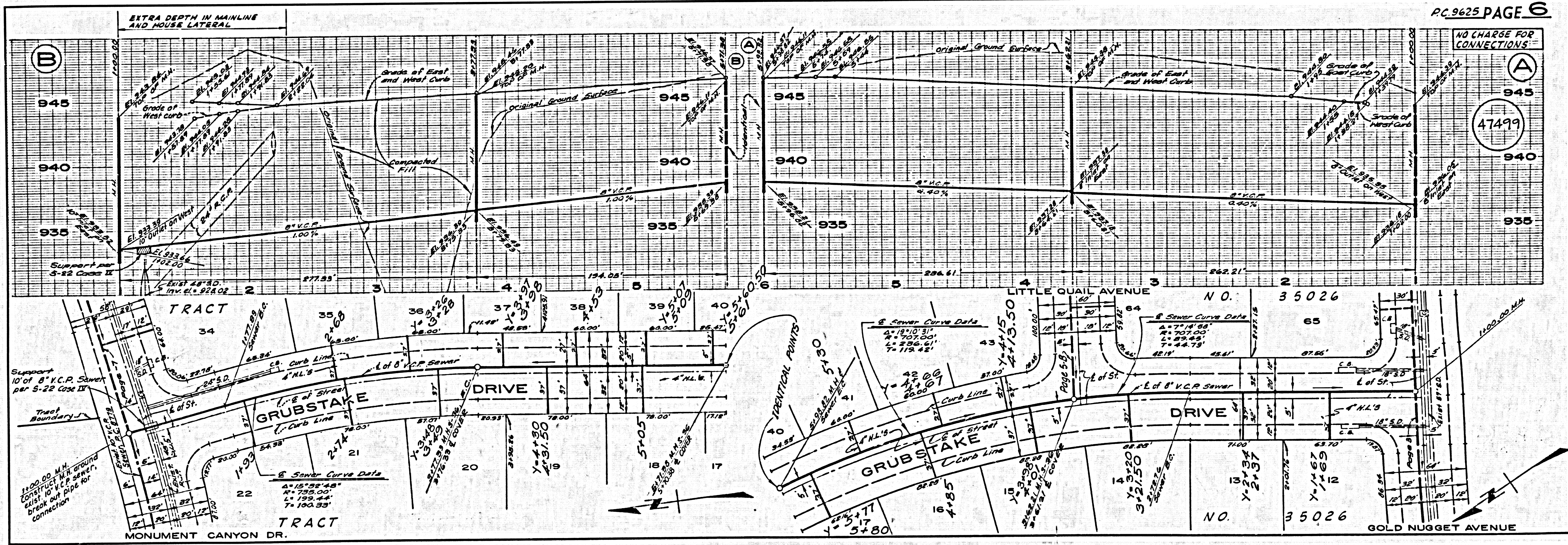
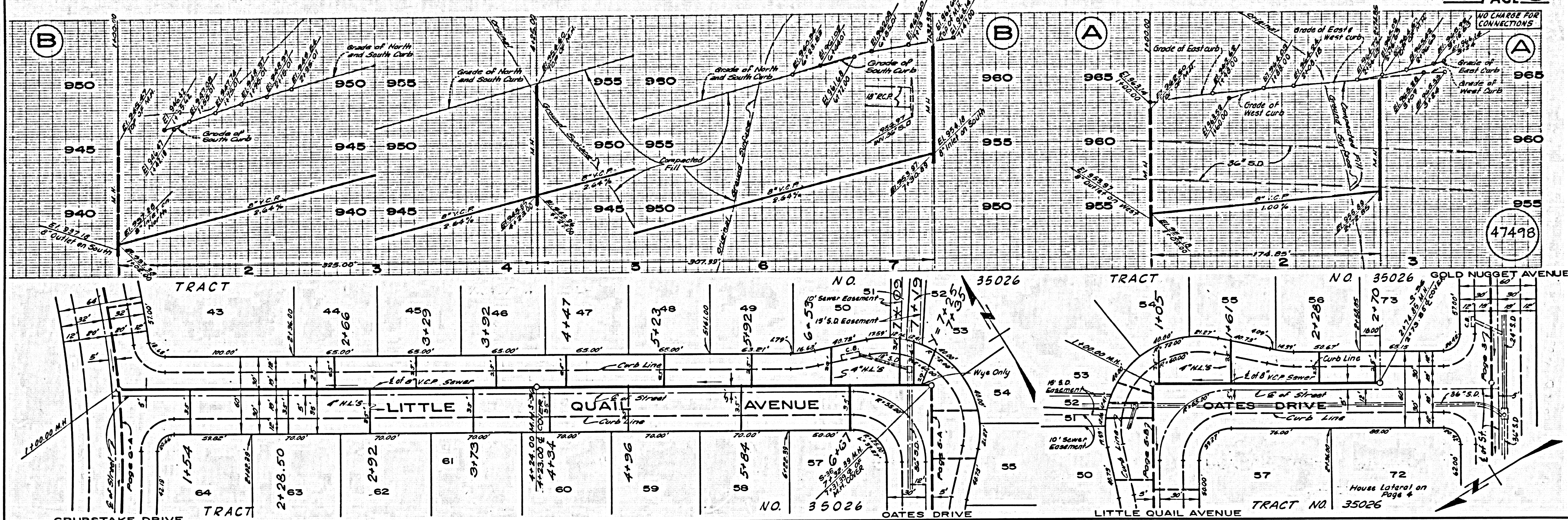
LOTS 122-127, INCLUSIVE, SERVED
 BY EXISTING SEWER IN CLEGHORN
 DRIVE - P.C. 9505.



NO CHARGE FOR CONNECTIONS

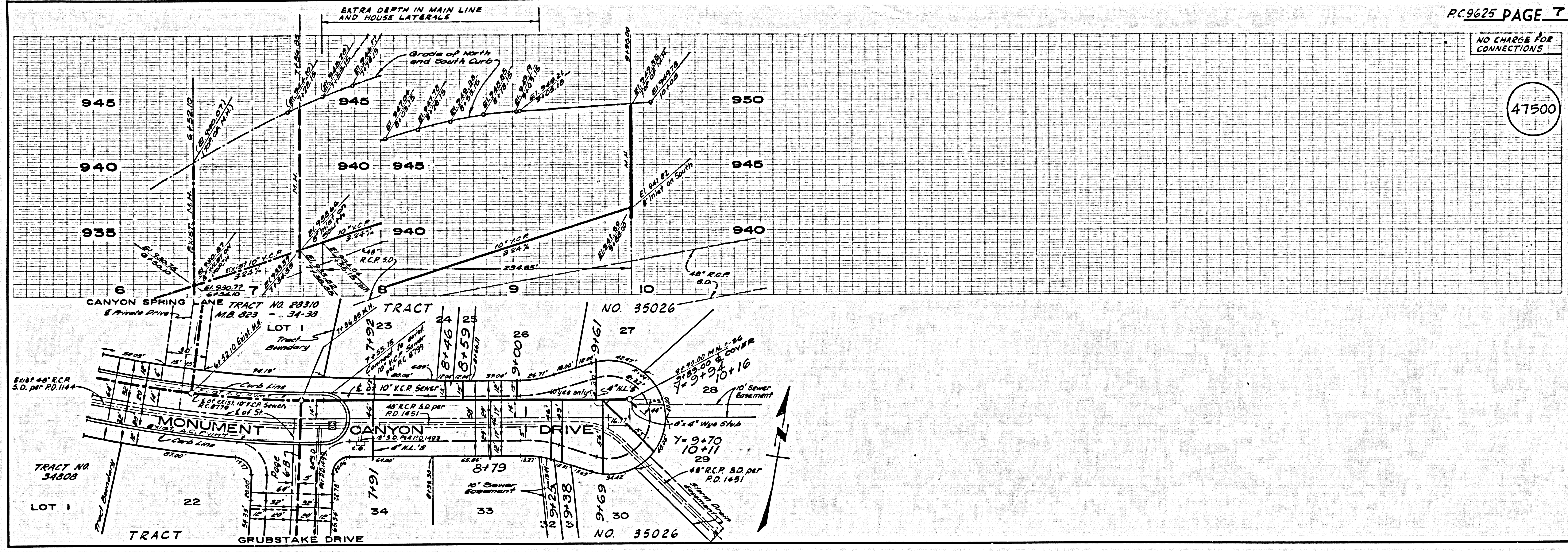
47495





NO CHARGE FOR CONNECTIONS

47500



71037-3