

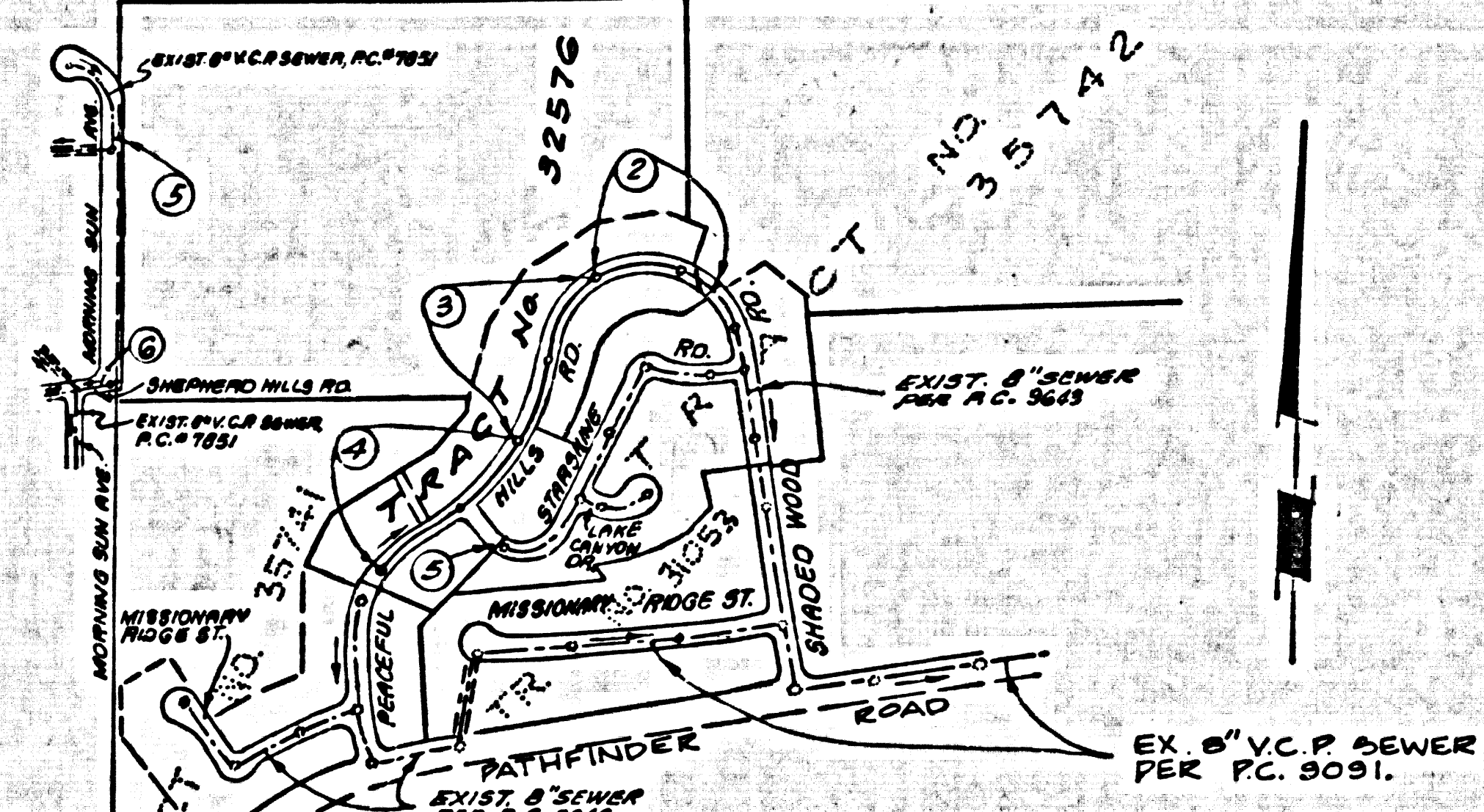
B.M. 86 7732 ELEV. 200.204
 L+BE 1 FT. W.B.C.R. 20 FT.
 N+51 FT. E. C/L INT. FERN-
 HOLLOW DR. & PATHFINDER RD.
 OTTERBEIN QUAD. 19.70

DOUBLE SCALE

**NOTE: ISSUE NO HOUSE CONNECTION PERMITS
 UNTIL OUTLET SEWER, P.C. 9643 & P.C. 9091 IS
 COMPLETED.**

REVISIONS MADE IN THE OFFICES OF
HUNSAKER & ASSOCIATES, INC.
 3001 REDHILL BUILDING 21, SUITE 219
 02874 MASS. CA. 92616 (714) 764-1011
 REVISED CURB GRADES & ELEVATIONS, SEWER GRADES & ELEVATIONS
 ON ALL OF PEACEFUL HILLS ROAD

BY: *Paul S. Hunsaker* DATE: 1/24/82
 APPROVED: *Ralph David Deant* DATE: 2/3/82



INDEX MAP
 TRACT No. 32576
 P.C. 9640
 SCALE: 1" = 600'

THE EXISTENCE AND LOCATION OF ANY UNDERGROUND
 UTILITY PIPES OR STRUCTURES SHOWN ON THESE PLANS
 ARE OBTAINED BY A SEARCH OF THE AVAILABLE RECORDS.
 TO THE BEST OF MY KNOWLEDGE THERE ARE NO EXIST-
 ING UTILITIES EXCEPT AS SHOWN ON THESE PLANS. THE
 CONTRACTOR IS REQUIRED TO TAKE DUE PRECAUTIONARY
 MEASURES TO PROTECT THE UTILITY LINES SHOWN AND
 ANY OTHER LINES NOT OF RECORD OR NOT SHOWN ON
 THESE PLANS.

Young J. Park
 R.C.E. 17215

GENERAL NOTES:

1. ELEVATIONS ARE IN FEET ABOVE U.S.C. & G.S. SEA LEVEL DATUM OF 1929.
2. NO REVISIONS SHALL BE MADE IN THESE PLANS WITHOUT THE APPROVAL OF THE COUNTY ENGINEER.
3. NO REPRESENTATIVE OF THE COUNTY ENGINEER WILL BE AT THE SITE OF ANY PORTION OF THE WORK.
4. GRADES TO WHICH THE IMPROVEMENT IS TO BE CONSTRUCTED ARE SHOWN ON PLANS AND PROFILES. GRADE POINTS FOR TOP OF CURBS, CENTER LINE OF STREETS, OR CENTER LINE OF ALLEYS ARE SHOWN BY CIRCLES ON PROFILES. AT ALL POINTS BETWEEN DESIGNATED POINTS THE GRADE SHALL BE ESTABLISHED AS TO CONFORM TO A STRAIGHT LINE BETWEEN SAID DESIGNATED POINTS.
5. THE PRIVATE ENGINEER SHALL FURNISH THE COUNTY ENGINEER WITH GRADE SHEETS AND STATIONING FOR ALL HOUSE LATERALS AND "T" OR "Y" BRANCHES AND SHALL PROVIDE STAKES FOR THEM AT THEIR PROPER LOCATIONS WITH STATIONING PLAINLY MARKED. ALL HOUSE LATERALS SHALL BE CONSTRUCTED IN A STRAIGHT ALIGNMENT AT RIGHT ANGLES FROM THE MAIN LINE SEWER EXCEPT AS SHOWN ON THE PLANS. HOUSE LATERALS FROM CHIMNEYS SHALL NOT HAVE AN ANGLE OF LESS THAN 45° WITH THE MAIN LINE SEWER. ANY CHANGE IN ALIGNMENT SHALL BE REQUESTED IN WRITING BY THE PRIVATE ENGINEER.
6. THE PRIVATE ENGINEER SHALL FURNISH THE HOUSE LATERAL SEWER AT THE PROPERTY LINE BELOW THE TOP OF CURB ELEVATION FOR EACH HOUSE LATERAL ON THE GRADE SHEET.
7. BEFORE WORK CAN BE STARTED, THE CONTRACTOR MUST OBTAIN A PERMIT TO EXCAVATE IN COUNTY STREETS FROM THE L.A. COUNTY ROAD DEPT., DISTRICT OFFICE NO. 1, AND PAY A FEE TO THE COUNTY ENGINEER, 201 MONTELEONE, SAN DIMAS REGIONAL OFFICE, TO COVER THE COST OF CONSTRUCTION INSPECTION AND RECORD PLANS, PER 229 S. VERMONT AVE., L.A. IF WORK IS TO BE DONE IN A STATE HIGHWAY, A PERMIT MUST BE OBTAINED FROM THE STATE OF CALIFORNIA, DIVISION OF HIGHWAYS, 120 SOUTH BRIDGE STREET, LOS ANGELES, CALIFORNIA.
8. APPROVAL OF THIS PLAN BY THE COUNTY OF LOS ANGELES DOES NOT CONSTITUTE A REPRESENTATION AS TO THE ACCURACY OF THE LOCATION OF OR THE EXISTENCE OR NON-EXISTENCE OF ANY UNDERGROUND UTILITY PIPE, OR STRUCTURE WITHIN THE LIMITS OF THE PROJECT. THIS NOTE APPLIES TO ALL PAGES.
9. REFER TO SECTION 7.18.4 OF THE STANDARD SPECIFICATIONS, REGARDING SAFETY ORDERS.
10. PRIOR TO THE ISSUANCE OF THE REQUIRED SEWER CONSTRUCTION PERMIT, THE CONTRACTOR SHALL OBTAIN AND FILE WITH THE COUNTY ENGINEER COPIES OF A PERMIT TO EXCAVATE IN COUNTY STREETS FROM THE LOS ANGELES COUNTY ROAD DEPARTMENT, 201 MONTELEONE, SAN DIMAS REGIONAL OFFICE, TO COVER THE COST OF CONSTRUCTION INSPECTION AND RECORD PLANS, PER 229 S. VERMONT AVE., L.A. IF WORK IS TO BE DONE IN A STATE HIGHWAY, A PERMIT MUST BE OBTAINED FROM THE STATE OF CALIFORNIA, DIVISION OF HIGHWAYS, 120 SOUTH BRIDGE STREET, LOS ANGELES, CALIFORNIA. THE CONTRACTOR SHALL OBTAIN AND FILE WITH THE COUNTY ENGINEER COPIES OF A PERMIT TO EXCAVATE IN COUNTY STREETS FROM THE LOS ANGELES COUNTY ROAD DEPARTMENT, 201 MONTELEONE, SAN DIMAS REGIONAL OFFICE, TO COVER THE COST OF CONSTRUCTION INSPECTION AND RECORD PLANS, PER 229 S. VERMONT AVE., L.A. IF WORK IS TO BE DONE IN A STATE HIGHWAY, A PERMIT MUST BE OBTAINED FROM THE STATE OF CALIFORNIA, DIVISION OF HIGHWAYS, 120 SOUTH BRIDGE STREET, LOS ANGELES, CALIFORNIA. THE CONTRACTOR SHALL OBTAIN AND FILE WITH THE COUNTY ENGINEER COPIES OF A PERMIT TO EXCAVATE IN COUNTY STREETS FROM THE LOS ANGELES COUNTY ROAD DEPARTMENT, 201 MONTELEONE, SAN DIMAS REGIONAL OFFICE, TO COVER THE COST OF CONSTRUCTION INSPECTION AND RECORD PLANS, PER 229 S. VERMONT AVE., L.A. IF WORK IS TO BE DONE IN A STATE HIGHWAY, A PERMIT MUST BE OBTAINED FROM THE STATE OF CALIFORNIA, DIVISION OF HIGHWAYS, 120 SOUTH BRIDGE STREET, LOS ANGELES, CALIFORNIA.

CONSTRUCTION NOTES:

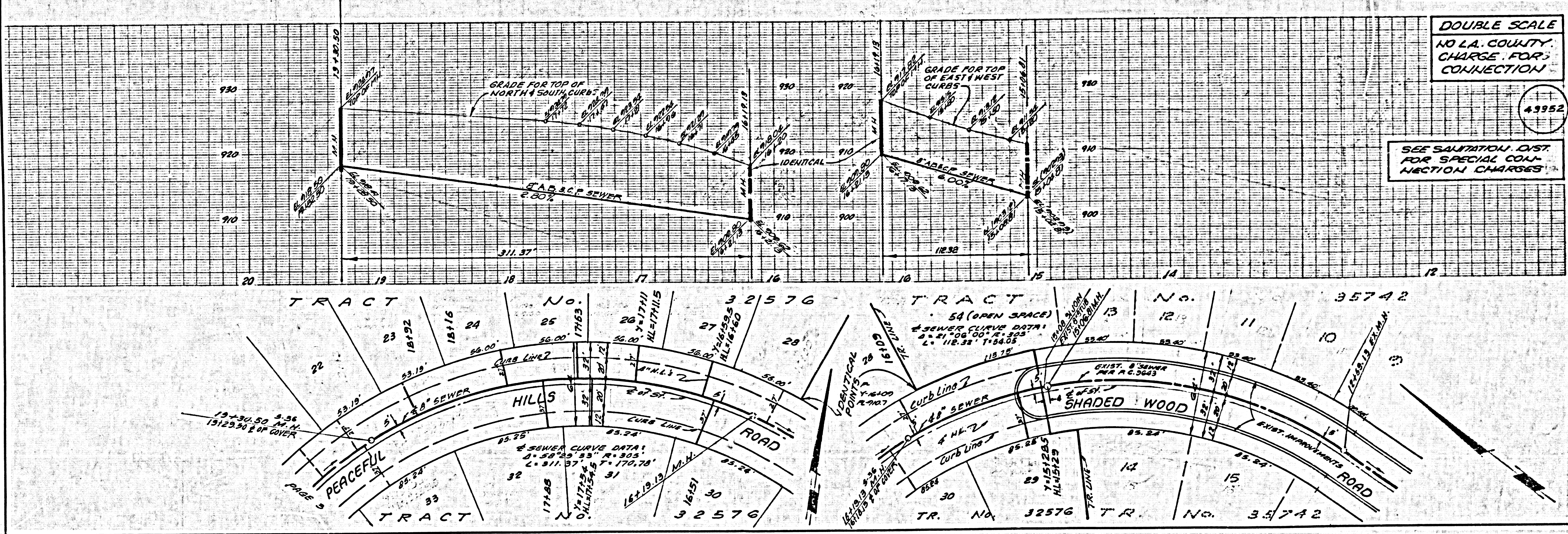
1. WORK SHALL BE CONSTRUCTED ACCORDING TO THE STANDARD SPECIFICATIONS FOR PUBLIC WORKS CONSTRUCTION (1978 EDITION) WITH 1978 SUPPLEMENTS AND COUNTY ENGINEER SPECIAL PROVISIONS FOR THE CONSTRUCTION OF SANITARY SEWERS BUILT 24" TO 36" AND SHALL BE PROSECUTED ONLY IN THE PRESENCE OF THE COUNTY ENGINEER.
 2. THE CONTRACTOR SHALL NOTIFY THE SAN. DIV. DIVISION OF TELEPHONE, PER 276-7288, AT LEAST TWENTY-FOUR HOURS BEFORE STARTING ANY WORK UNDER THIS CONTRACT.
 3. HOUSE LATERALS TO BE CONSTRUCTED WITH INVERTS AT PROPERTY LINE & MUST SHOW CURB GRADE EXCEPT AS NOTED.
 4. WYE ON THE BRANCHES SHALL BE USED FOR CONNECTIONS TO MAINLINE SEWERS EXCEPT AS NOTED.
 5. ALL STRUCTURES SHALL BE BUILT WITH MANHOLES PER 5-3 ON PRECAST CONCRETE MANHOLES PER 5-26, EXCEPT AS NOTED.
 6. PROVIDE STAKES ON THE PROPERTY LINE OR PROPERTY LINES PRODUCED AT RIGHT ANGLES TO THE SEWER LINE AT THE CENTER LINE OF EACH MANHOLE.
 7. MANHOLES FOR IN UNIMPROVED PORTS OF WAY TO BE SET INCH ABOVE FINISHED GRADE.
 8. WITHIN CURB AND SHOULD SHALL BE TYPE "C", "D", OR "E" PER STANDARD SPECIFICATIONS SECTION 300-5.
 9. IF A POWER POLE IS WITHIN THREE FEET OF THE SEWER, THE SEWER SHALL BE ENCASED, PER 5-26, CASE 2, TWO FEET ON EACH SIDE FROM THE POINT OF INTERFERENCE.
 10. IF DURING THE COURSE OF CONSTRUCTION IT IS DETERMINED THAT THERE IS LESS THAN FOUR FEET OF COVER OVER THE TOP OF A MAIN LINE OR HOUSE LATERAL 12" OR SEWER WHICH IS NOT ENCASED ON THE PLANS, THE PIPE SHALL BE ENCASED PER 5-26, CASE 2, UNLESS OTHERWISE APPROVED BY THE COUNTY ENGINEER.
 11. ALL JOINTS BETWEEN CAST IRON PIPE AND VITRIFIED CLAY PIPE SHALL BE MADE WITH A RUBBER SLEEVE JOINT, TYPE "C" OR "F", WITH GASKETS AS NECESSARY PER STANDARD SPECIFICATIONS, SECTION 300-5.
 12. SEWERS TO BE TESTED FOR LEAKAGE PER SECTION 300-4.6 OF THE STANDARD SPECIFICATIONS AND SPECIAL PROVISIONS.
 13. RESURFACE ALL FINISHED DRIVEWAYS TO MEET L.A. COUNTY ROAD DEPT. OR CALIFORNIA STATE HIGHWAY REQUIREMENTS IN ACCORDANCE WITH PERMITS.
 14. FULL COMPLIANCE WITH SECTION 300-4.5 OF THE SPECIAL PROVISIONS WILL BE REQUIRED FOR BACKFILL IN STREETS. CERTIFICATION OF BACKFILL COMPACTION AND SAND EQUIVALENTS BY A QUALIFIED, REGISTERED TESTING LABORATORY SHALL BE PROVIDED BY THE PERMITTEE PRIOR TO THE RESUMANCE OF A CERTIFICATE OF PARTIAL ACCEPTANCE.
- NO INTERFERENCE FOR THE DISPOSAL OF INDUSTRIAL WASTES SHALL BE MADE TO SEWERS SHOWN ON THESE DRAWINGS UNTIL A PERMIT FOR INDUSTRIAL WASTE WATER DISCHARGE HAS BEEN OBTAINED FROM THE SANITATION DISTRICTS. THIS CONNECTION SHALL BE NOTIFIED BY PHONE 902-9226 SO THAT REQUIRED INSPECTION CAN BE MADE.

PROFILE, ALIGNMENT AND GRADE OF
SANITARY SEWERS PAGE 1
 TO BE CONSTRUCTED IN
 TRACT NO. 32576
 PRIVATE CONTRACT NO. 9640
 W.S. 773
 3 SHEETS, 5 PAGES
 SCALE: VERT. 1" = 4'
 HORIZ. 1" = 40' NOV., 1978
 PREPARED IN THE OFFICES OF
E.L. PEARSON & ASSOCIATES
 BY: *Young J. Park*
 REG. C.E. No. 17215

THE FOLLOWING LATEST REVISED STANDARD PLANS ON FILE IN THE OFFICE OF THE COUNTY ENGINEER SHALL APPLY TO THE CONSTRUCTION OF THIS PROJECT.

SEWER	5-1
MINIMUM PUBLIC SAFETY REQUIREMENTS	5-2
ENCE MANHOLES	5-3
STANDARD MANHOLE SET	5-7
SEWING FOR SEWER PIPE	5-8
CRABBING AND INCASMENT	5-9
WYE OR W BRANCH	5-10
ALLOWABLE FRIBRIC WYFFS	5-11
LOCKING MANHOLE FRAME AND COVER	5-12
NON-REINFORCED PRECAST CONCRETE MANHOLES	5-13

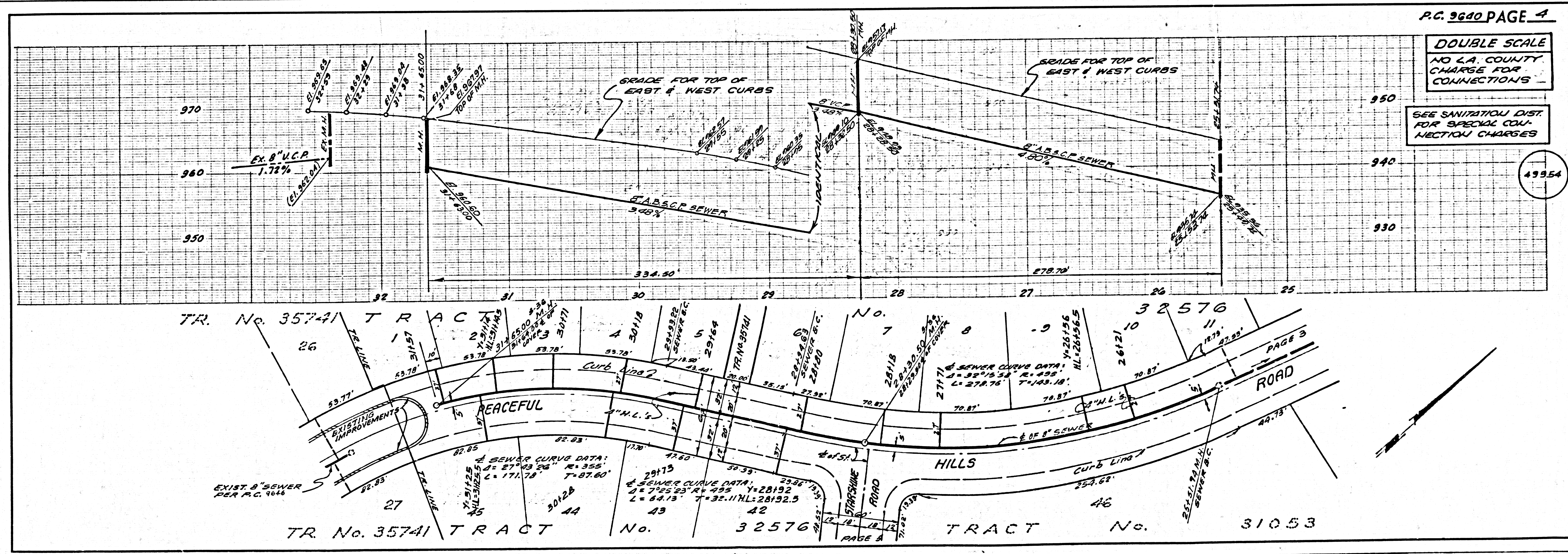
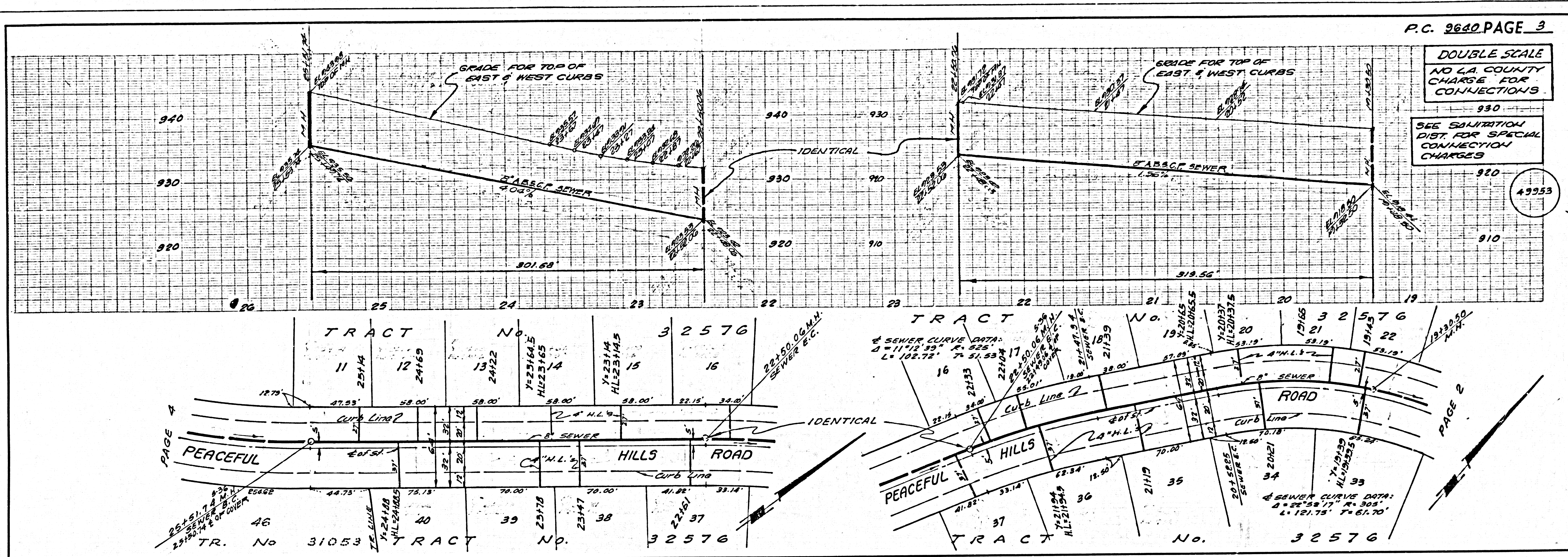
COUNTY OF LOS ANGELES, CALIFORNIA
 STEPHEN J. HOODGE, COUNTY ENGINEER
 APPROVED: *Loren W. Kinsley* 8-31-77
 CHECKED: *Ralph David Deant* 8/1/79
 WALTER S. CARLSON, CHIEF ENGINEER
 APPROVED: *Paul J. De* 9/1/79
 REG. C.E. No. 16663
 LA PUENTE BLDG. DIST. 80



DOUBLE SCALE
 NO L.A. COUNTY
 CHARGE FOR
 CONNECTION

SEE SANITATION DIST.
 FOR SPECIAL CON-
 NECTION CHARGES

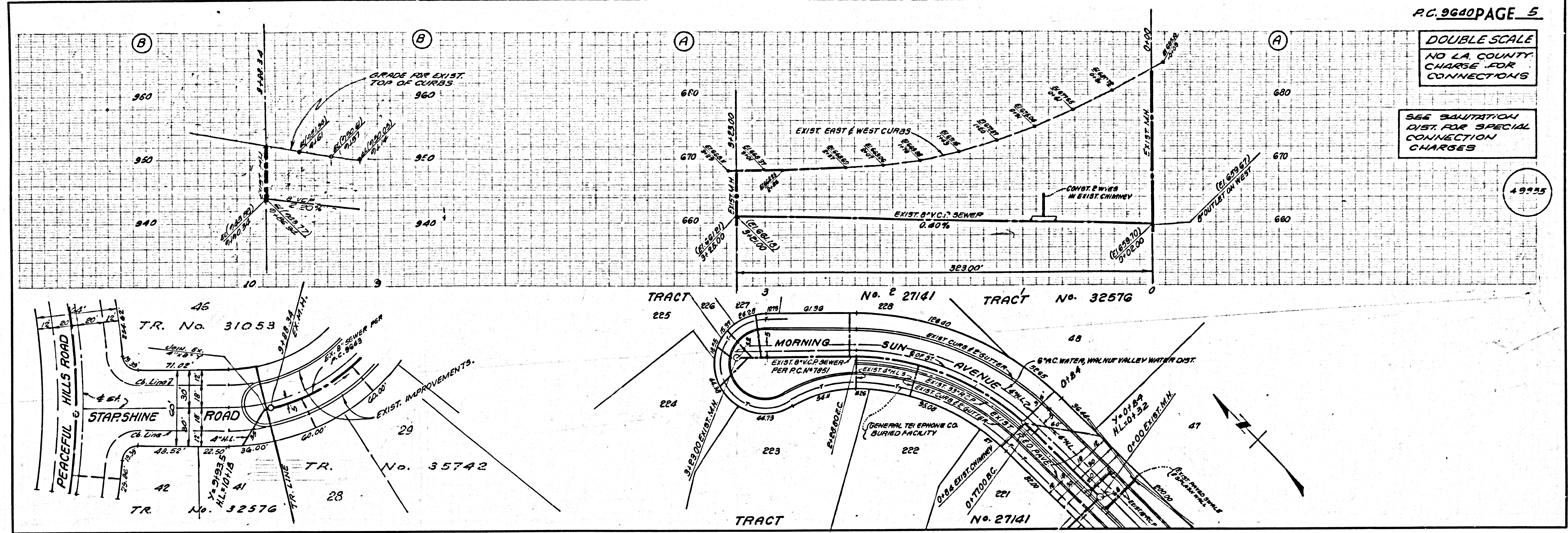
5
PAGE 3A STREE SW TRACT



DOUBLE SCALE
NO LA. COUNTY
CHARGE FOR
CONNECTIONS

SEE SALTATION
DIST. FOR SPECIAL
CONNECTION
CHARGES

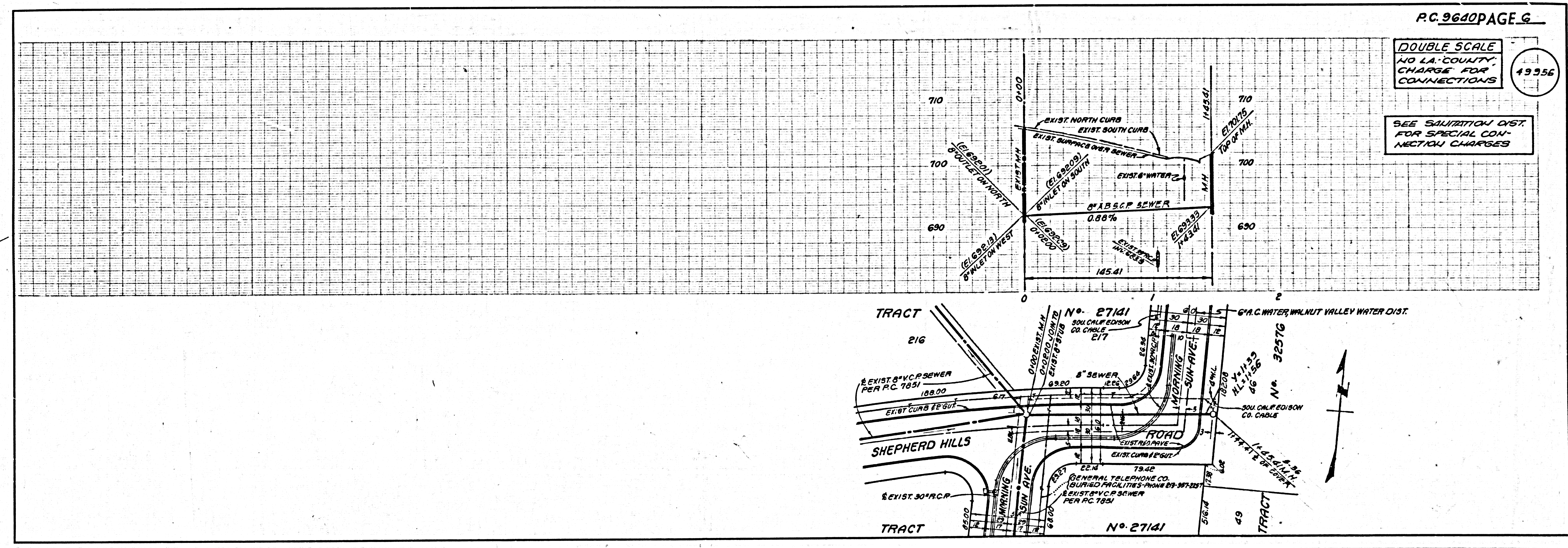
49935



DOUBLE SCALE
NO LA. COUNTY
CHARGE FOR
CONNECTIONS

SEE SALTATION
DIST. FOR SPECIAL
CONNECTION
CHARGES

49936



068839 STREE SUTCHART