

TO BE CONSTRUCTED IN
TRACT No 34831
PRIVATE CONTRACT NO. 9642

W.S. 39-C, 4
 4 SHEETS, 7 PAGES
 SCALE: VERT. 1" = 6'
 HORIZ. 1" = 40'
 PREPARED IN THE OFFICES OF
 DON GREEN & ASSOCIATES
 111 S. ORANGE STREET
 ORANGE, CALIF. 92666
 BY: *[Signature]* 4-11-79
 REG. C. E. No. 12182

49079

THE FOLLOWING LATEST REVISED STANDARD PLANS ON FILE IN THE OFFICE OF THE COUNTY ENGINEER SHALL APPLY IN THE CONSTRUCTION OF THIS PROJECT:

LOGS	5-1
MINIMUM PUBLIC SAFETY REQUIREMENTS	5-2
STANDARD MANHOLE SET	5-3
BRICK MANHOLES	5-4
STANDARD MANHOLE STEP	5-5
BRICKS FOR SEWER PIPE	5-6
CRACKING AND ENCASING	5-7
WYE ON THE SUPPORT	5-8
ALLOWABLE TRENCH WIDTHS	5-9
LOCATING MANHOLE FRAME AND COVER	5-10
NON-REINFORCED PRECAST CONCRETE MANHOLES	5-11

COUNTY OF LOS ANGELES, CALIFORNIA
 STEPHEN J. KOONCE, COUNTY ENGINEER
 APPROVED: *[Signature]* 5/16/79
 SAN DIMAS REGIONAL ENGINEER
 CHECKED: *[Signature]* 5/30/79
 DATE
 REG. C. E. No. 12853
 SAN DIMAS BLDG. DIST. 1000 J.N. 0358.01

- GENERAL NOTES: DOUBLE SCALE**
1. ELEVATIONS ARE IN FEET ABOVE M.S.L. & U.S. SEA LEVEL DATUM OF 1929.
 2. NO REVISIONS SHALL BE MADE IN THESE PLANS WITHOUT THE APPROVAL OF THE COUNTY ENGINEER.
 3. NO REPRESENTATIVE OF THE COUNTY ENGINEER WILL SURVEY OR LAY OUT ANY PORTION OF THE WORK.
 4. GRADES TO WHICH THIS IMPROVEMENT IS TO BE CONSTRUCTED ARE SHOWN ON PLANS AND PROFILES. GRADE POINTS FOR TOP OF CURBS, CENTER LINE OF STREETS, OR CENTER LINE OF ALLEYS ARE SHOWN BY CIRCLES ON PROFILES AT ALL POINTS BETWEEN DESIGNATED WATER POINTS THE GRADE SHALL BE ESTABLISHED AS TO CONFORM TO A STRAIGHT LINE DRAWN BETWEEN SAID DESIGNATED POINTS.
 5. THE PRIVATE ENGINEER SHALL FURNISH THE COUNTY ENGINEER WITH CADRE SEWER LINES AND STATIONING FOR ALL HOUSE LATERALS AND "C" OR "D" MANHOLES AND SHALL PROVIDE STAKES FOR THEM AT THEIR PROPER LOCATIONS WITH STATIONING PLAINLY MARKED. ALL HOUSE LATERALS SHALL BE CONSTRUCTED IN A STRAIGHT ALIGNMENT AT RIGHT ANGLES FROM THE MAIN LINE SEWER EXCEPT AS SHOWN ON THE PLANS. HOUSE LATERALS FROM CHIMNEYS SHALL NOT HAVE AN ANGLE OF LESS THAN 45° WITH THE MAIN LINE SEWER. ANY CHANGE IN ALIGNMENT SHALL BE REQUESTED IN WRITING BY THE PRIVATE ENGINEER.
 6. THE PRIVATE ENGINEER SHALL FURNISH THE HOUSE LATERAL DEPTH AT THE PROPERTY LINE BELOW THE TOP OF CURB ELEVATION FOR EACH HOUSE LATERAL ON THE GRADE SHEET.
 7. BEFORE WORK CAN BE STARTED, THE CONTRACTOR MUST OBTAIN A PERMIT TO EXCAVATE IN COUNTY STREETS FROM THE L.A. COUNTY ROAD DEPT., DISTRICT OFFICE NO. 1, AND PAY A FEE TO THE COUNTY ENGINEER, 501 E. BOWLTA AVE., SAN DIMAS REGIONAL OFFICE TO COVER THE COST OF CONSTRUCTION INSPECTION AND RECORD PLANS.
 8. IF WORK IS TO BE DONE IN A STATE HIGHWAY, A PERMIT MUST BE OBTAINED FROM THE STATE OF CALIFORNIA, DIVISION OF HIGHWAYS, 128 SOUTH SPRING STREET, LOS ANGELES, CALIFORNIA.
 9. APPROVAL OF THIS PLAN BY THE COUNTY OF LOS ANGELES DOES NOT CONSTITUTE A REPRESENTATION AS TO THE ACCURACY OF THE LOCATION OF OR THE EXISTENCE OR NON-EXISTENCE OF ANY UNDERGROUND UTILITY PIPE, OR STRUCTURE WITHIN THE LIMITS OF THIS PROJECT. THIS NOTE APPLIES TO ALL PAGES.
 10. REFER TO SECTION 3-18.4.1 OF THE STANDARD SPECIFICATIONS, BRIDGES AND SAFETY DEVICES.
 11. PRIOR TO PERFORMANCE OF THE REQUIRED SEWER CONSTRUCTION PERMIT BY THE COUNTY ENGINEER, THE CONTRACTOR SHALL OBTAIN A PERMIT TO EXCAVATE FROM THE STATE OF CALIFORNIA, DEPARTMENT OF INDUSTRIAL RELATIONS, DIVISION OF INDUSTRIAL SAFETY, AND SHALL FILE A CERTIFICATE OF WORKERS COMPENSATION INSURANCE WITH THE COUNTY ENGINEER.

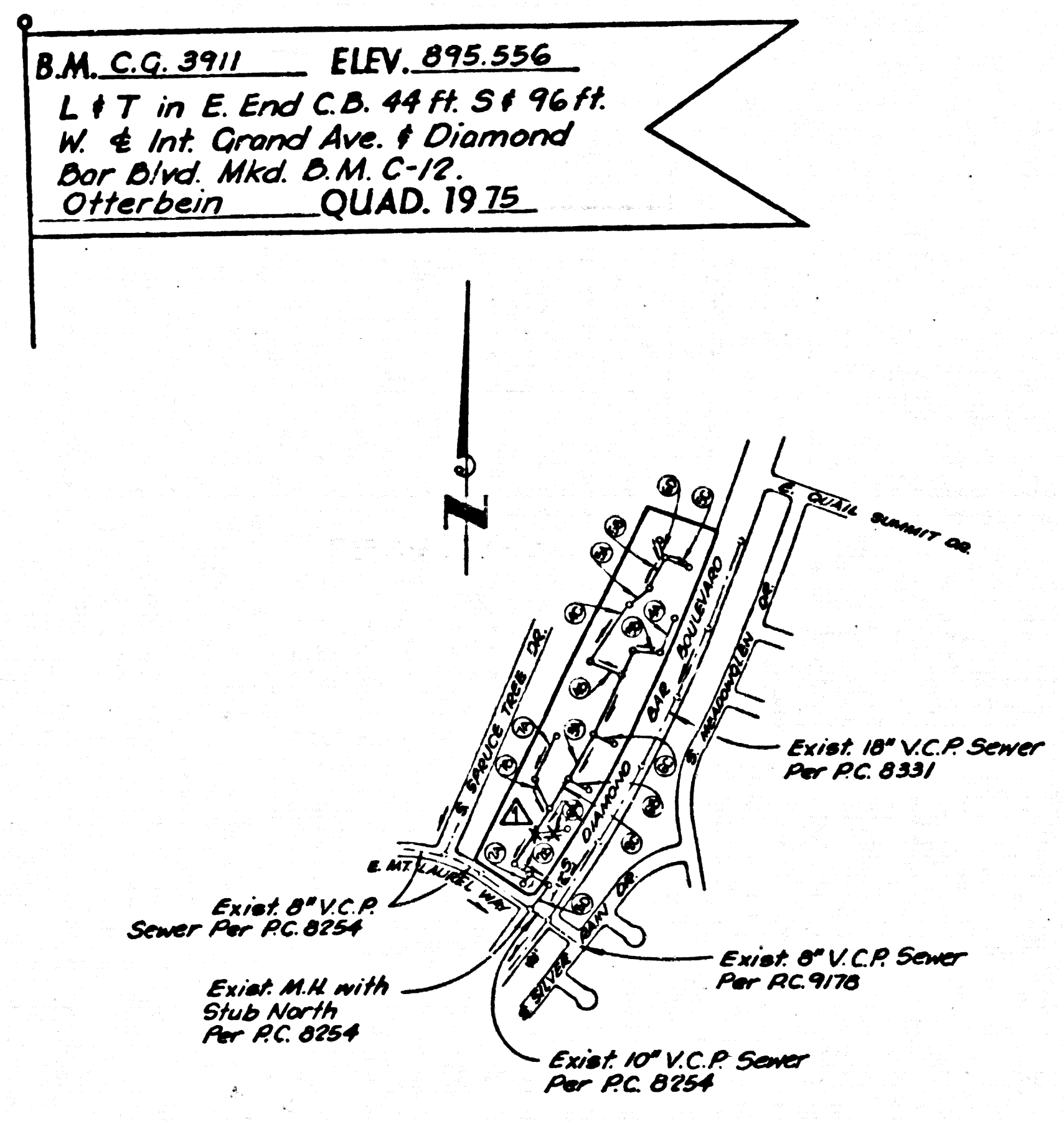
- CONSTRUCTION NOTES:**
1. WORK SHALL BE CONSTRUCTED ACCORDING TO THE STANDARD SPECIFICATIONS FOR PUBLIC WORKS CONSTRUCTION (1976 EDITION) AND COUNTY ENGINEER SPECIAL PROVISIONS FOR THE CONSTRUCTION OF SANITARY SEWERS DATED SEPTEMBER 21, 1978, AND SHALL BE PROSECUTED ONLY IN THE PRESENCE OF THE COUNTY ENGINEER.
 2. THE CONTRACTOR SHALL NOTIFY THE ENVIRONMENTAL DEVELOPMENT DIVISION, PHONE (916) 758-2156, AT LEAST TWENTY-FOUR HOURS BEFORE STARTING ANY WORK UNDER THIS CONTRACT.
 3. HOUSE LATERALS TO BE CONSTRUCTED WITH INVERTS AT PROPERTY LINE 6 FEET BELOW CURB GRADE EXCEPT AS NOTED.
 4. WYE OR TE MANHOLES MAY BE USED FOR CONNECTIONS TO MAINLINE SEWERS EXCEPT AS NOTED.
 5. ALL STRUCTURES SHALL BE BUILT BRICK MANHOLES PER 5-3 OR PRECAST CONCRETE MANHOLES PER 5-3, EXCEPT AS NOTED.
 6. PROVIDE STAKES ON THE PROPERTY LINE OR PROPERTY LINES PRODUCED AT RIGHT ANGLES TO THE SEWER LINE AT THE CENTER LINE OF EACH MANHOLE.
 7. MANHOLE TOPS IN UNIMPROVED RIGHTS OF WAY TO BE SIX INCHES ABOVE FINISHED GRADE.
 8. VITRIFIED CLAY PIPE JOINTS SHALL BE TYPE "B", "C", OR "D" PER STANDARD SPECIFICATIONS SECTION 206-2.
 9. IF A POWER POLE IS WITHIN FEET OF THE SEWER, THE SEWER SHALL BE ENCASED PER 5-3, CASE II, TWO FEET ON EACH SIDE FROM THE POINT OF INTERFERENCE.
 10. IF DURING THE COURSE OF CONSTRUCTION IT IS DETERMINED THAT THERE IS LESS THAN FOUR FEET OF COVER OVER THE TOP OF A MAIN LINE OR HOUSE LATERAL V.C.P. SEWER WHICH IS NOT INDICATED ON THE PLANS, THE PIPE SHALL BE ENCASED PER 5-3, CASE II, WITH REINFORCEMENT IF NECESSARY PER STANDARD SPECIFICATIONS, SECTION 206-4.
 11. ALL JOINTS BETWEEN CLAY PIPE AND VITRIFIED CLAY PIPE SHALL BE MADE WITH A RUBBER SLEEVE JOINT, TYPE "C" OR "D", WITH REINFORCEMENT IF NECESSARY PER STANDARD SPECIFICATIONS, SECTION 206-4.
 12. SEWERS TO BE INSTALLED PER SECTION 206-1.4 OF THE STANDARD SPECIFICATIONS AND SPECIAL PROVISIONS.
 13. REINFORCE ALL TRENCHES WITHIN RIGHTS OF WAY TO MEET L.A. COUNTY ROAD DEPT. OF CALIFORNIA STATE HIGHWAY REQUIREMENTS IN ACCORDANCE WITH PERMITS.
 14. FULL COMPLIANCE WITH SECTION 206-1.8.8 OF THE SPECIAL PROVISIONS WILL BE REQUIRED FOR BACKFILL IN STREETS. CERTIFICATION OF SUFFICIENT COMPACTION AND SAND EQUIVALENTS BY A QUALIFIED, REGISTERED TESTING LABORATORY SHALL BE PROVIDED BY THE PERMITTEE PRIOR TO THE RESUMPTION OF A CERTIFICATE OF PARTIAL ACCEPTANCE.
 15. SPECIAL BACKFILL IN DESIGNATED AREAS
 16. BACKFILL TRENCHES AND RIGHTS OF WAY EXCEPT AS NOTED TO BE TO ACHIEVE THE NATURAL OR FINISHED GRADES AND SLOPES SHOWN ON THE STANDARD PLANS APPROVED FOR THIS TRACT MAP BY THE BUILDING AND SAFETY DIVISION.
 17. ALL BACKFILL AND SAND EQUIVALENTS SHALL BE COMPACTED TO A MINIMUM OF 90% OF MAXIMUM DENSITY PER A.S.T.M. STANDARD METHOD OF TESTING. DENSITY MAY BE MODIFIED. ACCEPTABLE CERTIFICATION OF SUCH COMPACTION SHALL BE SUBMITTED TO THE ENVIRONMENTAL DEVELOPMENT DIVISION.

REVISION NO. DATE 12/18/80

Remove manhole and sewer main connection at station 3+67.29; revise sewer grade of 0.40% to 0.44% from station 2+81.35 to 4+81.29; change building locations and elevations between station 3+00 and 5+00; add 6" sewer lateral at station 3+70 and 4+50 on page 2C.

Cross out page 6A.

Approved: *[Signature]* 12/18/80
 Office of County Engineer R.E. No. 16883

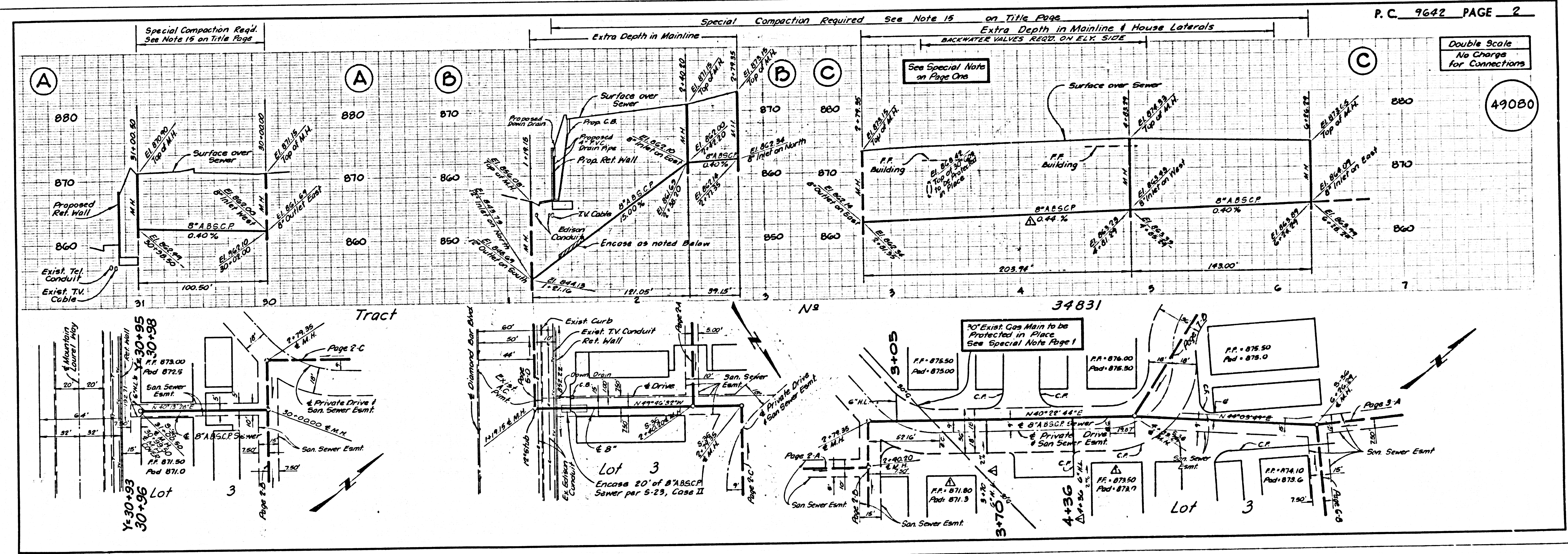


Notes: Numbers in circles indicate page numbers

Index Map
 Scale: 1" = 600'
 P.C. 9642

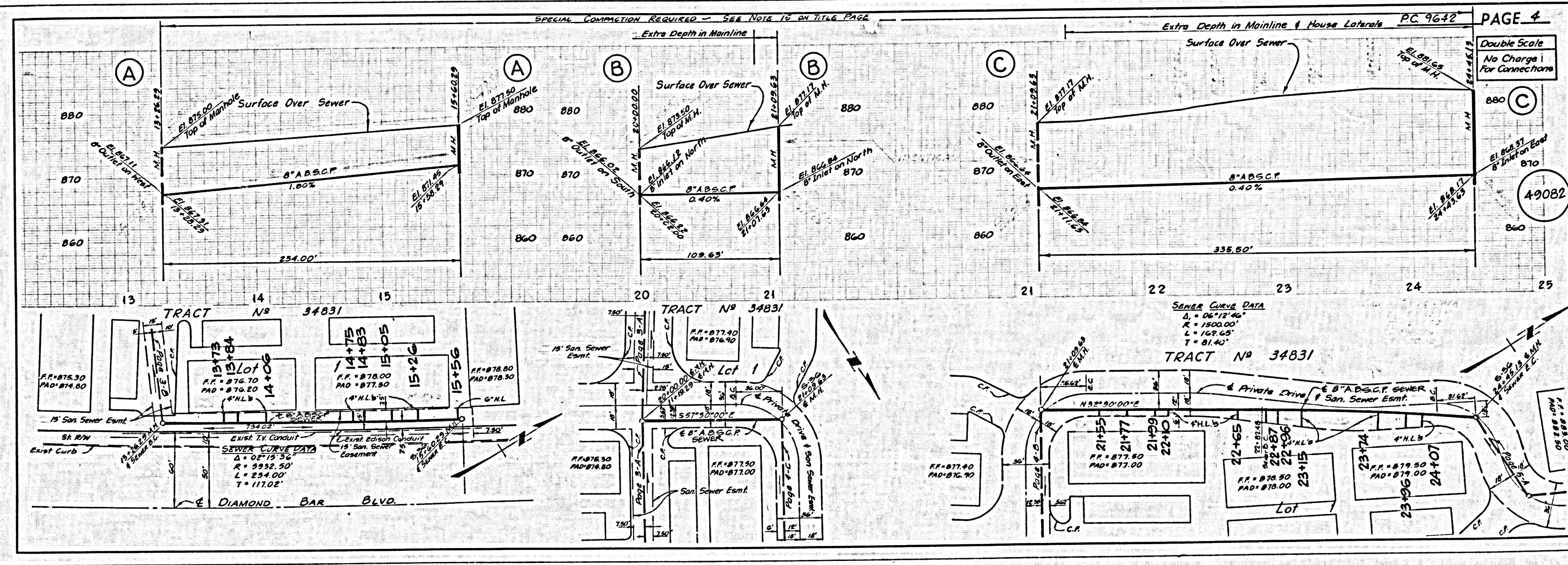
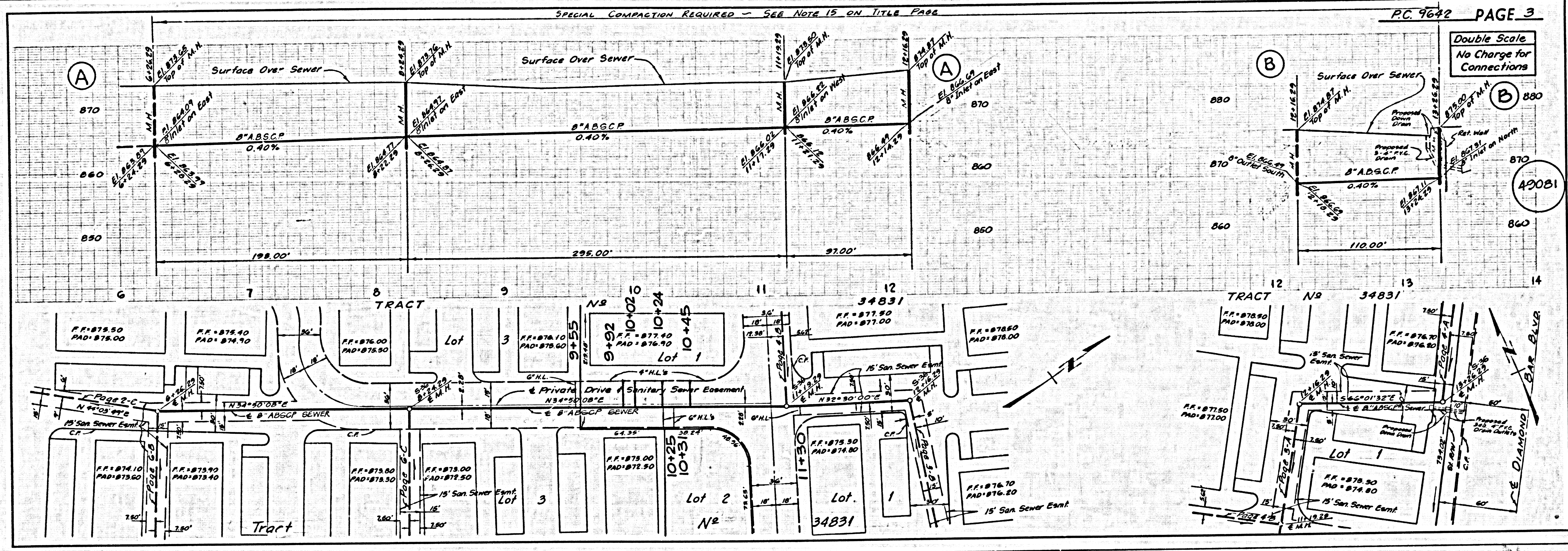
SPECIAL NOTE

The 30" Gas Line shown hereon is a high pressure line. The Contractor is to use EXTREME CAUTION during construction and shall verify all locations and elevations by hand excavations prior to construction. The Contractor shall give notice to Southern California Gas Co. in area (714) 524-2287 at least 48 hours before starting work in the vicinity of the 30" Gas Line.



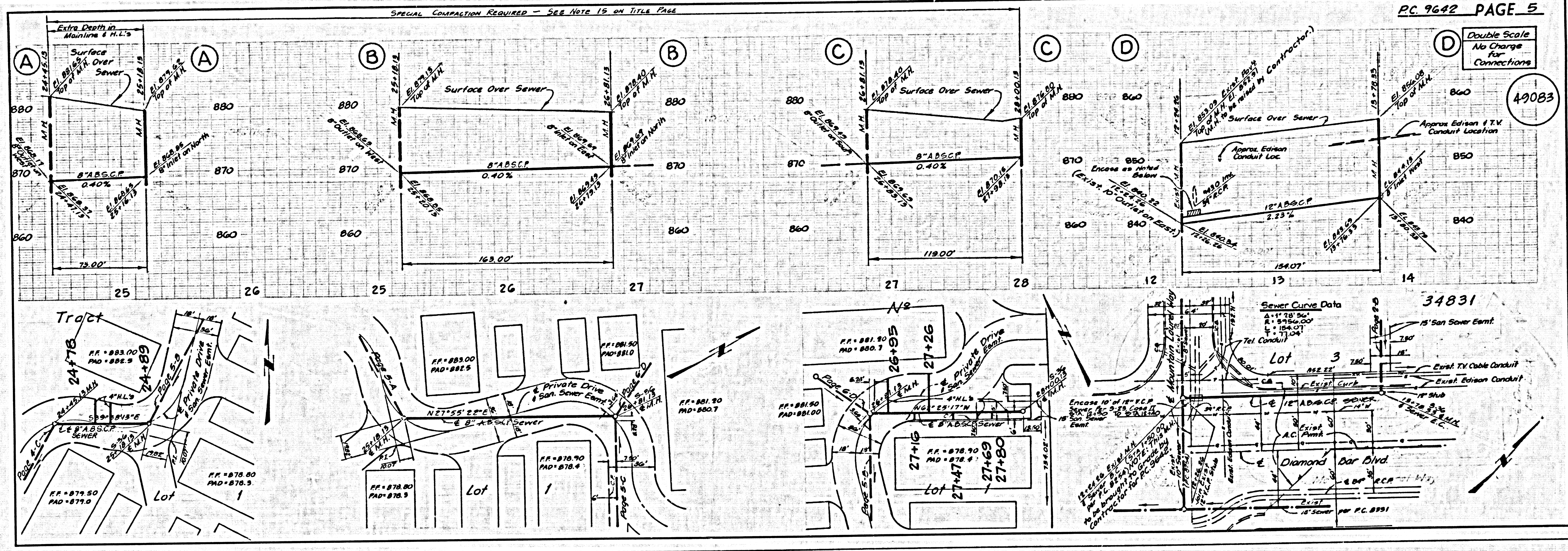
5486 29

12842 21 TRACT

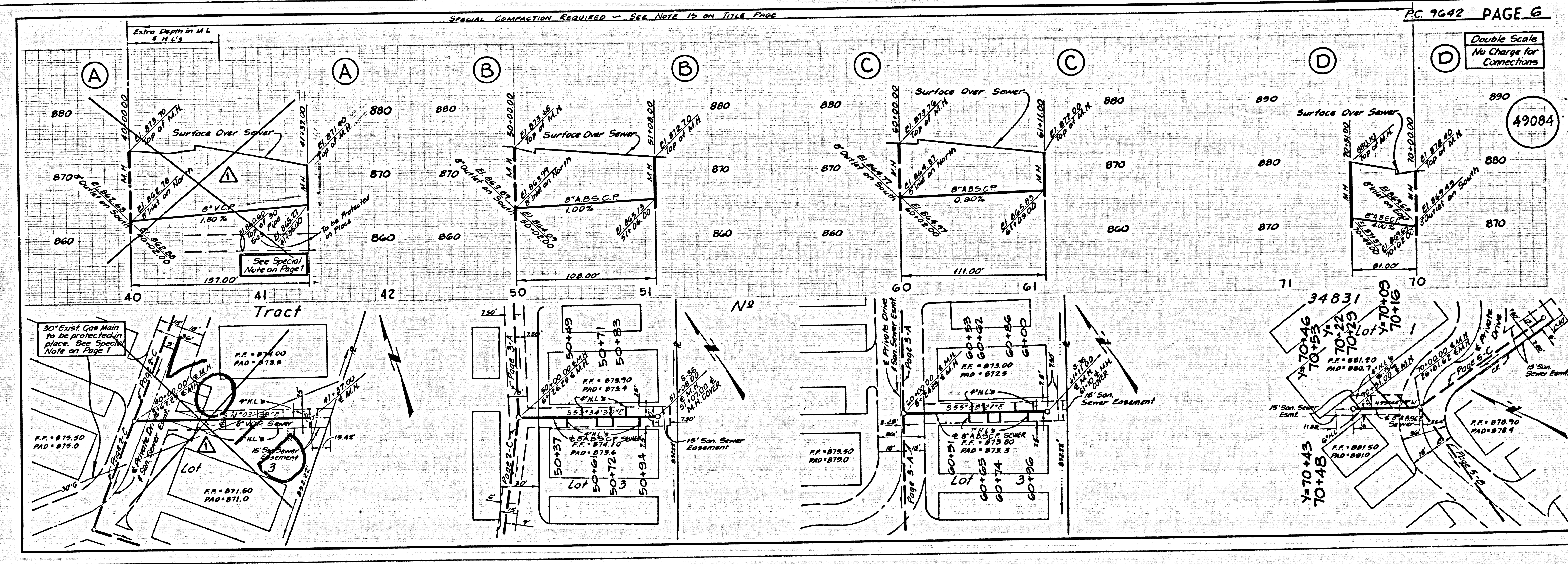


3482 29

15845 21 TRACT



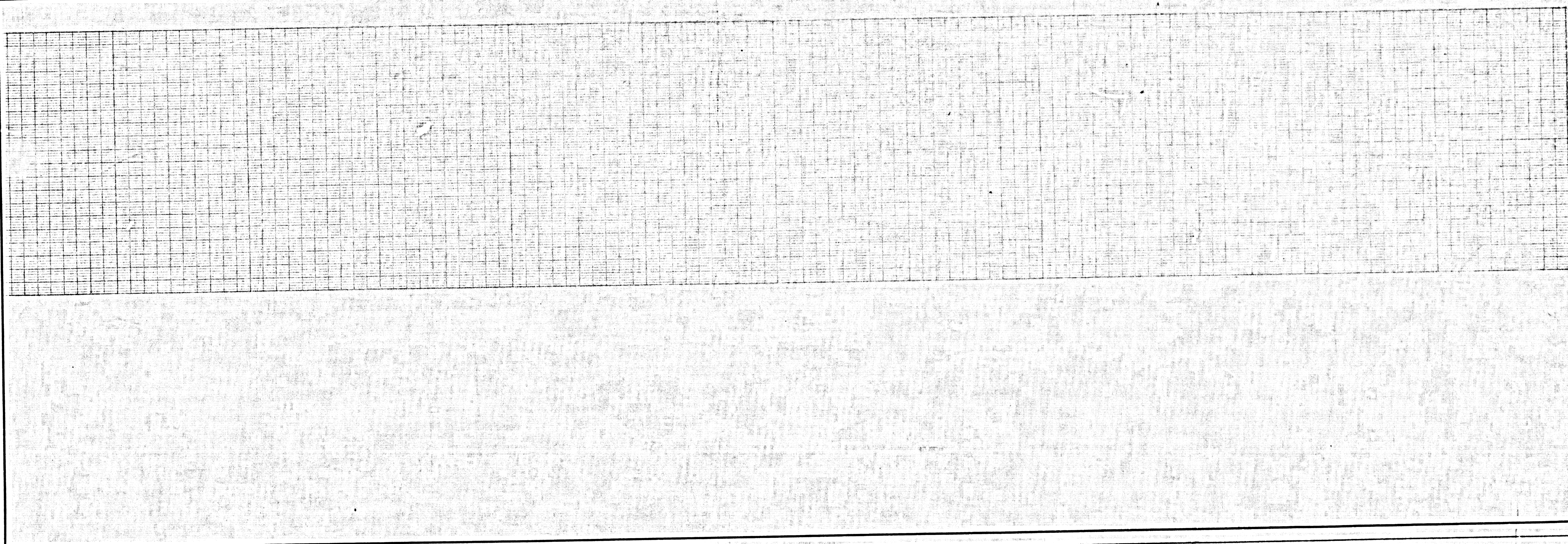
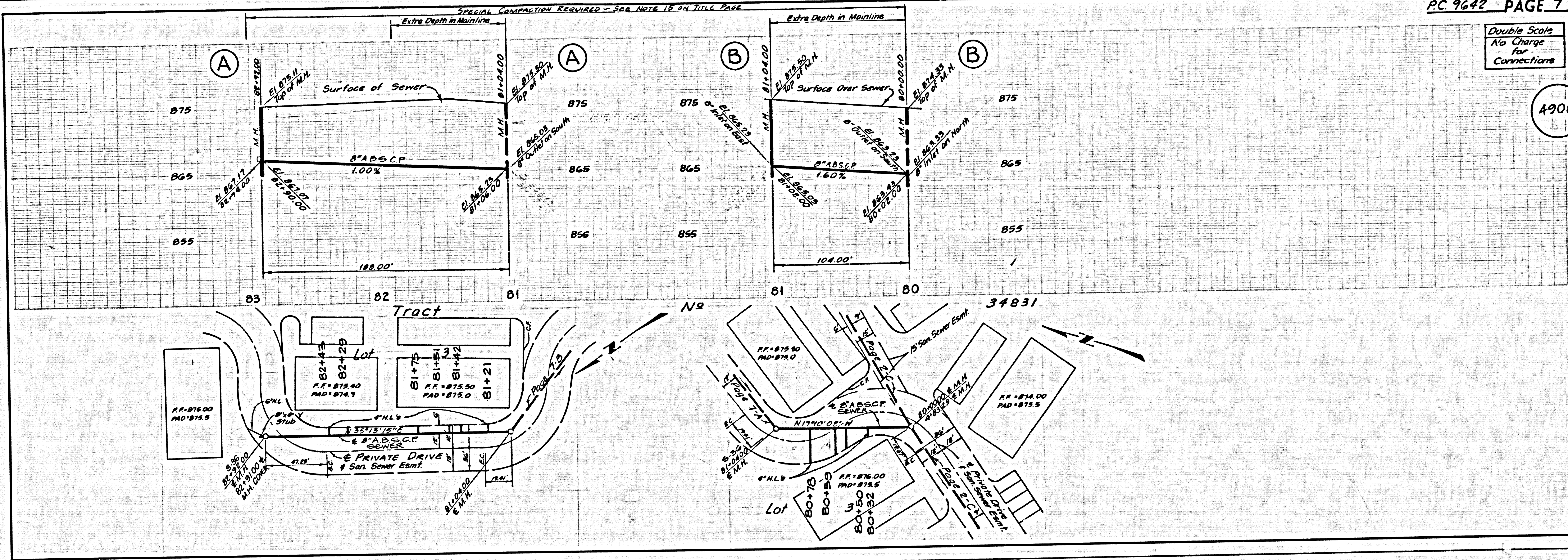
S49E 29



E384E 21 TCART

Double Scale
No Charge
for
Connections

49085



3482 39

1842 21 TRACT