

TO BE CONSTRUCTED IN
TRACT No. 35586
PRIVATE CONTRACT NO. 9650

W.S. 62
 2 SHEETS, 1 PAGES
 SCALE: VERT. 1" = 4' HORIZ. 1" = 40'
 PREPARED IN THE OFFICES OF
ENGINEERING SERVICE CORPORATION
 4476 ASHURBLY PARK AVENUE, VAN NUYS, CALIFORNIA, 91411
 BY: *J.R. McArthur*
 REG. C. E. No. 13075

47894

THE FOLLOWING LATEST REVISIONS SHALL APPLY IN THE CONSTRUCTION OF THIS PROJECT:

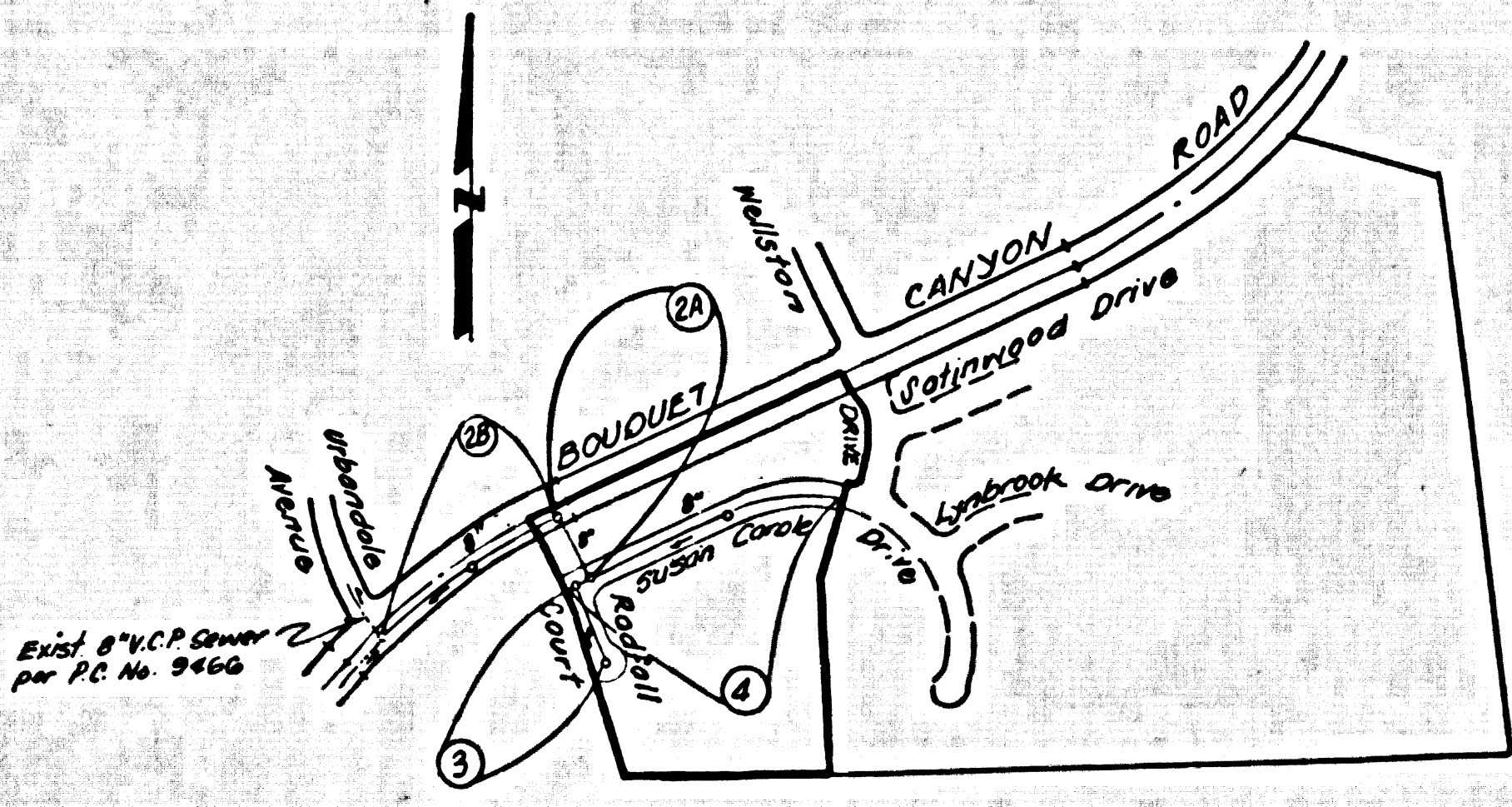
LEGEND	0-1
MINIMUM PUBLIC SAFETY REQUIREMENTS	0-2
BRICK MANHOLES	0-3
STANDARD MANHOLE STEP	0-17
STANDARD FOR SEWER PIPE	0-20
CLADDING AND BRICKWORK	0-26
WYE ON THE SURFACE	0-28
ALTERNATE TRENCH WIDTHS	0-30
LOCKING MANHOLE FRAME AND COVER	0-36
NON-REINFORCED PORTLAND CONCRETE MANHOLES	0-36
GRADES FOR HOUSE LATERALS	0-47
SPECIAL HOUSE LATERALS	0-55

COUNTY OF LOS ANGELES, CALIFORNIA
 STEPHEN KOONCE, COUNTY ENGINEER
 APPROVED: *John W. Keagle* 8-3-77
 CHECKED: *Ralph David Sweet* 9/17/77
 REG. C. E. No. 16983
 COUNTY ENGINEER
 WALTER E. GARRISON, CHIEF ENGINEER
 APPROVED: *Frank D.* 8/10/77
 OFFICE ENGINEER
 SOUTHWEST VALLEY BLDG. DIST. 9-2

- GENERAL NOTES:**
1. REVISIONS ARE BY THE ABOVE U.S.C. & G.S. SEA LEVEL DATUM OF 1929.
 2. NO REVISIONS SHALL BE MADE IN THESE PLANS WITHOUT THE APPROVAL OF THE COUNTY ENGINEER.
 3. NO REPRESENTATIVE OF THE COUNTY ENGINEER WILL SURVEY OR LAY OUT ANY PORTION OF THE WORK.
 4. GRADES TO WHICH THIS IMPROVEMENT IS TO BE CONSTRUCTED ARE SHOWN ON PLANS AND PROFILES. GRADE POINTS FOR TOP OF CURB, CENTER LINE OF SEWER, OR CENTER LINE OF ALLEYS ARE SHOWN BY CENTER OR PROFILE. AT ALL POINTS BETWEEN DESIGNATED POINTS THE GRADE SHALL BE ESTABLISHED SO AS TO CONFORM TO A STRAIGHT LINE DRAWN BETWEEN SAID DESIGNATED POINTS.
 5. THE PRIVATE ENGINEER SHALL FURNISH THE COUNTY ENGINEER WITH GRADE SHEETS AND STATIONING FOR ALL HOUSE LATERALS AND "T" OR "Y" BRANCHES AND SHALL PROVIDE STAKES FOR THEM AT THEIR PROPER LOCATIONS WITH STATIONING PLAINLY MARKED. ALL HOUSE LATERALS SHALL BE CONSTRUCTED IN A STRAIGHT ALIGNMENT AT RIGHT ANGLES FROM THE MAIN LINE SEWER EXCEPT AS SHOWN ON THE PLANS. HOUSE LATERALS FROM CHIMNEYS SHALL NOT HAVE AN ANGLE OF LESS THAN 45° WITH THE MAIN LINE SEWER. ANY CHANGE IN ALIGNMENT SHALL BE REQUESTED IN WRITING BY THE PRIVATE ENGINEER.
 6. THE PRIVATE ENGINEER SHALL FURNISH THE HOUSE LATERAL DEPTH AT THE PROPERTY LINE BELOW THE TOP OF CURB ELEVATION FOR EACH HOUSE LATERAL ON THE GRADE SHEET.
 7. BEFORE WORK CAN BE STARTED, THE CONTRACTOR MUST OBTAIN A PERMIT TO EXCAVATE IN COUNTY STREETS FROM THE LA COUNTY ROAD DEPT., DISTRICT OFFICE NO. 8, AND PAY A FEE TO THE COUNTY ENGINEER, REG. E. VERBON, DISTRICT OFFICE NO. 8, TO COVER THE COST OF CONSTRUCTION INSPECTION AND RECORD PLANS.
 8. IF WORK IS TO BE DONE IN A STATE HIGHWAY, A PERMIT MUST BE OBTAINED FROM THE STATE OF CALIFORNIA, DIVISION OF HIGHWAYS, 138 SOUTH SPRING STREET, LOS ANGELES, CALIFORNIA.
 9. APPROVAL OF THIS PLAN BY THE COUNTY OF LOS ANGELES DOES NOT CONSTITUTE A REPRESENTATION AS TO THE ACCURACY OF THE LOCATION OF OR THE EXISTENCE OR NON-EXISTENCE OF ANY UNDERGROUND UTILITY PIPE, OR STRUCTURE WITHIN THE LIMITS OF THIS PROJECT. THIS NOTE APPLIES TO ALL PAGES.
 10. REFER TO SECTION 7-18.4.3 OF THE STANDARD SPECIFICATIONS REGARDING SAFETY CORDS.
 11. PRIOR TO THE BEGINNING OF THE REQUIRED SEWER CONSTRUCTION PERMIT, THE CONTRACTOR SHALL OBTAIN AND FILE WITH THE COUNTY ENGINEER COPIES OF A PERMIT TO EXCAVATE IN COUNTY STREETS FROM THE LOS ANGELES COUNTY ROAD DEPARTMENT, A PERMIT FOR EXCAVATIONS AND TRENCHES FROM THE STATE OF CALIFORNIA, DIVISION OF INDUSTRIAL SAFETY AND A CERTIFICATE OF WORKER'S COMPENSATION INSURANCE WITH THE DEPARTMENT OF COUNTY ENGINEER, 350 SOUTH VERMONT, ROOM 405, LOS ANGELES, CALIFORNIA 90020, NAMED AS THE CERTIFICATE HOLDER TO BE NOTICED 30 DAYS PRIOR TO CANCELLATION OF POLICY.

- CONSTRUCTION NOTES:**
1. WORK SHALL BE CONSTRUCTED ACCORDING TO THE STANDARD SPECIFICATIONS FOR PUBLIC WORKS CONSTRUCTION (1977 EDITION) WITH THE SUPPLEMENT AND COUNTY ENGINEER SPECIAL PROVISIONS FOR THE CONSTRUCTION OF SANITARY SEWERS DATED 12/22/76 AND SHALL BE PROSECUTED ONLY IN THE PRESENCE OF THE COUNTY ENGINEER.
 2. THE CONTRACTOR SHALL NOTIFY THE ENVIRONMENTAL DEVELOPMENT DIVISION BY TELEPHONE 813-778-2566 AT LEAST TWENTY FOUR HOURS BEFORE STARTING ANY WORK UNDER THE CONTRACT.
 3. HOUSE LATERALS TO BE CONSTRUCTED WITH INVERTS AT PROPERTY LINE A FEET BELOW CURB GRADE EXCEPT AS NOTED.
 4. WYE ON THE BRANCHES SHALL BE USED FOR CONNECTIONS TO MANHOLE SEWERS EXCEPT AS NOTED.
 5. ALL STRUCTURES SHALL BE EITHER BRICK MANHOLES PER 0-36 OR PORTLAND CONCRETE MANHOLES PER 0-36, EXCEPT AS NOTED.
 6. PROVIDE STAKES ON THE PROPERTY LINE OR PROPERTY LINE PRODUCE AT RIGHT ANGLES TO THE SEWER LINE AT THE CENTER LINE OF EACH MANHOLE.
 7. MANHOLE TOPS IN UNIMPROVED RIGHTS OF WAY TO BE SIX INCHES ABOVE FINISHED GRADE.
 8. VITRIFIED CLAY PIPE JOINTS SHALL BE TYPE "T", "F", OR "M" PER STANDARD SPECIFICATIONS SECTION 300-2.
 9. IF A POWER POLE IS WITHIN THREE FEET OF THE SEWER, THE SEWER SHALL BE ENCASED PER 0-26, CASE II, TWO FEET ON EACH SIDE FROM THE POWER OF INTERFERENCE.
 10. IF DURING THE COURSE OF CONSTRUCTION IT IS DETERMINED THAT THERE IS LESS THAN FOUR FEET OF COVER OVER THE TOP OF A MAIN LINE OF SEWER (VITRIFIED CLAY OR 8" B.C.P.) IT IS NOT INDICATED ON THE PLANS, THE PIPE SHALL BE ENCASED PER 0-26, CASE II UNLESS OTHERWISE APPROVED BY THE COUNTY ENGINEER.
 11. ALL JOINTS BETWEEN CAST IRON PIPE AND VITRIFIED CLAY PIPE SHALL BE MADE WITH A RUBBER SERVICE JOINT, TYPE "C" OR "F", (WITH BUSHING IF NECESSARY) PER STANDARD SPECIFICATIONS, SECTION 300-2.
 12. SEWERS TO BE TIED TO EXISTING PER SECTION 300-1.4 OF THE STANDARD SPECIFICATIONS AND SPECIAL PROVISIONS.
 13. ASSURE ALL TRENCHES WITHIN PAVED AREAS TO MEET LA COUNTY ROAD DEPT. OR CALIFORNIA STATE HIGHWAY REQUIREMENTS IN ACCORDANCE WITH PERMITS.
 14. FULL COMPLIANCE WITH SECTION 300-1.8.4 OF THE SPECIAL PROVISIONS WILL BE REQUIRED FOR BACKFILL IN STREET. CERTIFICATION OF BACKFILL COMPACTION AND SAND EQUIVALENT BY A QUALIFIED, LICENSED TESTING LABORATORY SHALL BE PROVIDED BY THE PERMITTEE PRIOR TO THE ISSUANCE OF A CERTIFICATE OF PARTIAL ACCEPTANCE.
- NOTE: 8" MAIN LINE SEWER CONNECTION CAN NOT BE MADE AT STUB AT STA 1+02.00 ON PAGE 2 UNTIL OUTLET SEWER A.C. 9466 IS COMPLETED.
 LOTS 12, 13, 14 TO BE SERVED FROM P.C. 9664.

B.M. 2763 ELEV. 1301.851
 80' B.M. TAG N.C.B. 2' E. B.C.R. N.E. COR.
 BOUQUET CANYON RD. SUBDANDELE
 AVE. 73' N.W. 120' E. OF E. INT.
 NE-WALL QUAD. 1922



INDEX MAP
 SCALE: 1" = 500'

PC. 9650
 TR. No. 35586

- CONSTRUCTION NOTES (CONT.):**
15. PIPE BRANCHES ONLY MAY BE USED FOR CONNECTIONS TO MAINLINE SEWER IF A.B.S.C.P. IS USED.
 16. ALL JOINTS BETWEEN CAST IRON PIPE AND A.B.S.C.P. SHALL BE MADE WITH APPROVED FITTINGS.
 17. FULL COMPLIANCE WITH PART II OF THE SPECIAL PROVISIONS IS REQUIRED FOR THE INSTALLATION OF A.B.S.C.P. CONDUITS PIPE AND A.B.S. SOLID WALL HOUSE LATERALS.
 18. MANHOLE WALKER STOPS BRACKETS AND CLAMPS ARE REQUIRED FOR THE CONNECTION OF A.B.S.C.P. CONDUITS PIPE TO MANHOLE STRUCTURES.
 19. A.B.S. SOLID WALL PIPE MUST BE USED FOR WYE AND HOUSE LATERAL CONNECTIONS TO A.B.S.C.P. CONDUITS MAINLINE SEWER PIPE.
 20. 9" DEFLECTOR COUPLERS SHOULD BE USED TO ACCOMPLISH RADIIUS OF TURNING LESS THAN 20'.
 21. SPECIAL BRICKWORK CONSTRUCTION
 22. BRICKWORK TRENCH AND SURFACE OTHER THAN 30 FEET TO PREVENT THE NATURAL OR FINISHED BRICKS AND SLABS SHOWN ON THE BARROWS PLAN APPROVED FOR THIS DEVELOPMENT BY THE BUILDING AND SAFETY DIVISION.
 23. ALL BRICKS AND SLABS REQUIRED SHALL BE CONCRETE TO A MINIMUM OF 30% OF FINISHING DENSITY PER A.S.T.M. STANDARD METHOD OF TEST D698-57T AS MODIFIED. ACCEPTABLE CERTIFICATION OF SUCH CONSTRUCTION SHALL BE SUBMITTED TO THE ENVIRONMENTAL DEVELOPMENT DIVISION.

NOTE: NO HOUSE CONNECTIONS CAN BE MADE TO THIS SEWER UNTIL OUTLET SEWER P.C. No. 9466 IS COMPLETED.

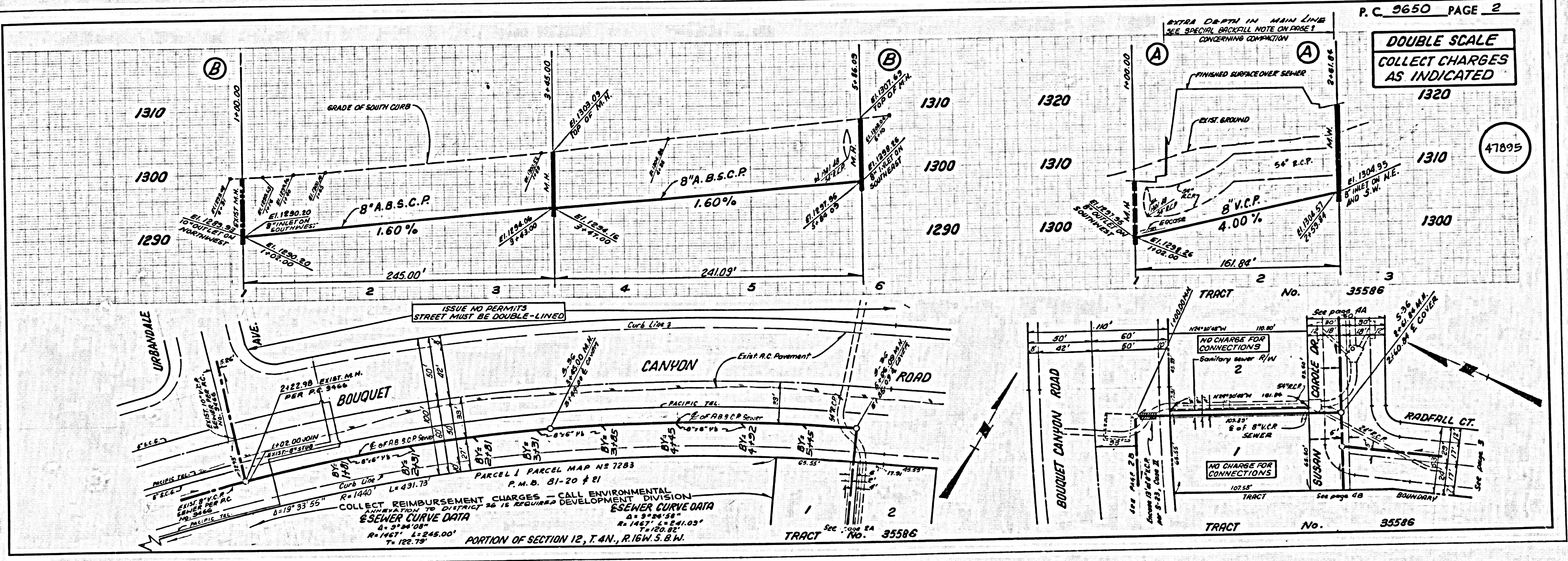
PRIVATE ENGINEER'S NOTICE TO CONTRACTOR

The existence and location of any underground utility pipes or structures shown on these plans are obtained by a search of the available records. To the best of our knowledge there are no existing utilities except as shown on this map.

The Contractor is required to take precautionary measures to protect the utility lines shown and any other lines not of record or not shown on this drawing.

BEFORE BREAKING INTO OR CONSTRUCTION ON A COUNTY SANITATION DISTRICT SEWER AND PRIOR TO FINAL ACCEPTANCE OF THE PROJECT SANITATION DISTRICT INSPECTOR SHALL BE NOTIFIED BY PHONE 902-3605, SO THAT REQUIRED INSPECTION CAN BE MADE.

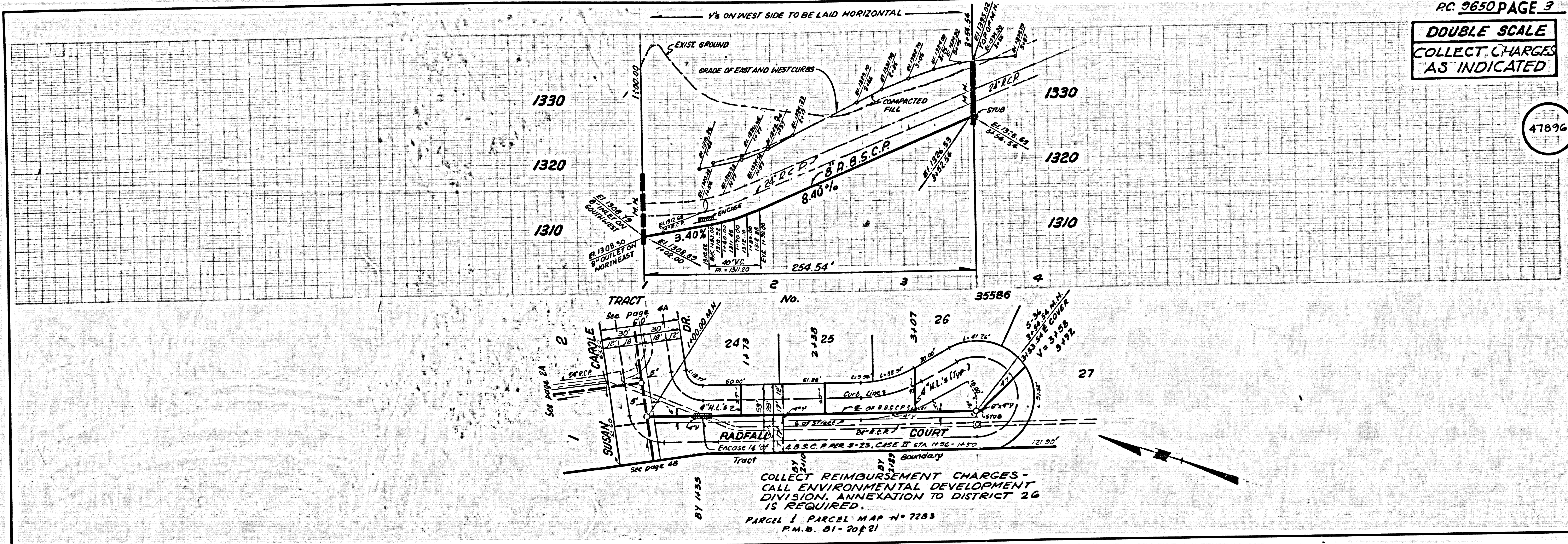
Contractor agrees that he shall assume sole and complete responsibility for job site conditions during the course of construction of this Project, including safety of all persons and property; that this requirement shall apply continuously and not be limited to normal working hours; and that the Contractor shall defend, indemnify and hold the Owner and the Engineer harmless from any and all liability, real or alleged, in connection with the performance of work on this Project, excepting for liability arising from the sole negligence of the Owner or the Engineer.



DOUBLE SCALE
 COLLECT CHARGES AS INDICATED

47895

47896



47897

