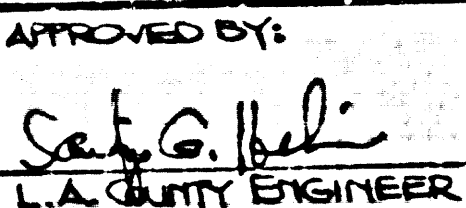
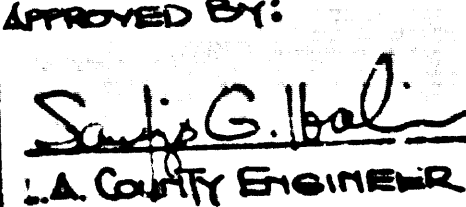
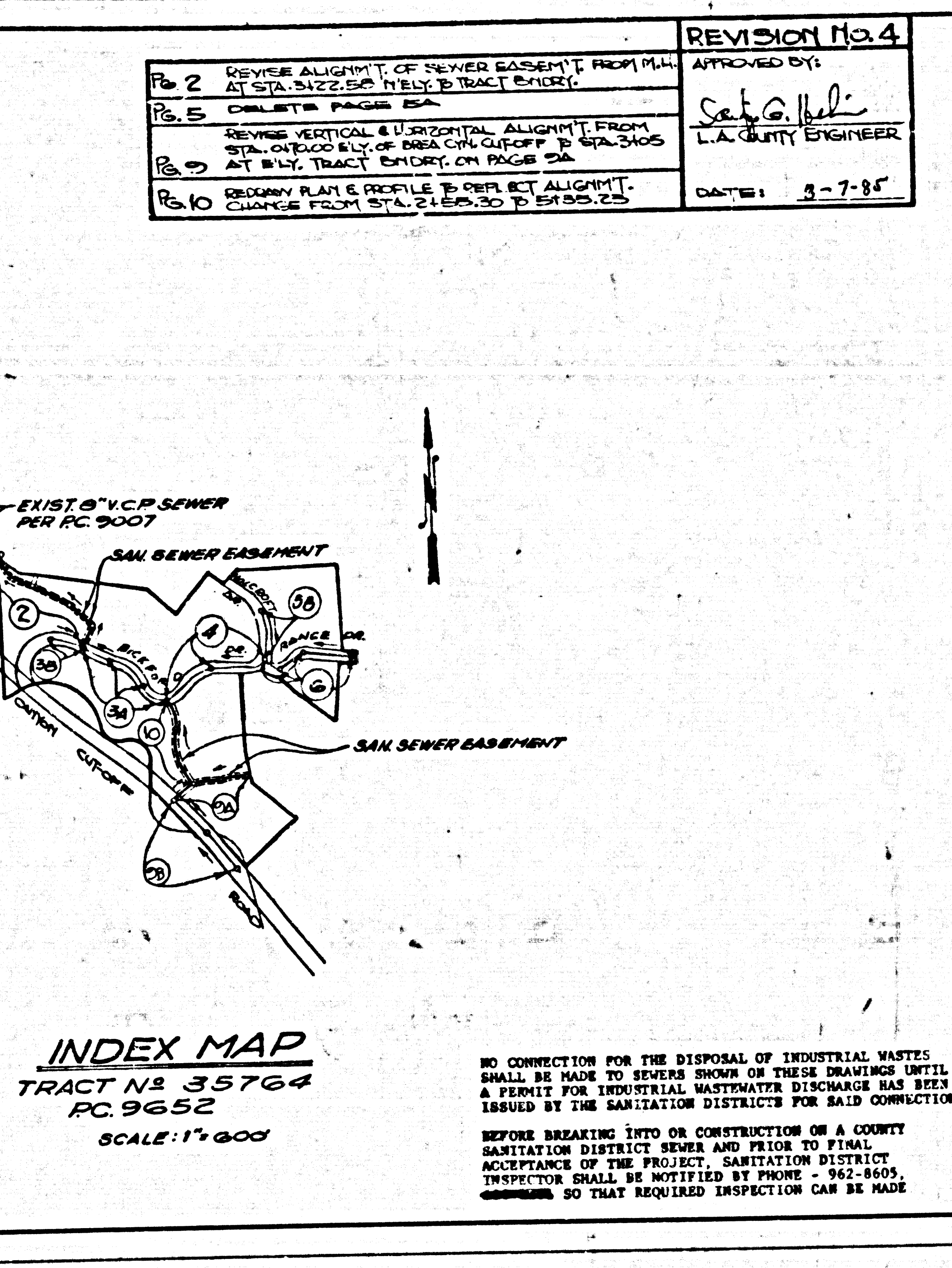


B.M. CG 1920 ELEV. 672.336 BT SPK. IN CONC. HDWL 15 FT N OF BREA CANYON CUTOFF RR 10.85 MI. N OF BREA CANYON RR 350 FT FROM SURV. M. 142(10/9) OTTERBEIN QUAD. 1925		REVISION No. 4 APPROVED BY:  L.A. COUNTY ENGINEER DATE: 3-7-84
REVISION No. 3 APPROVED BY:  L.A. COUNTY ENGINEER DATE: 1-26-84		INDEX MAP TRACT No 35764 PC 9652 SCALE: 1"=600' NO CONNECTION FOR THE DISPOSAL OF INDUSTRIAL WASTES SHALL BE MADE TO SEWER SHOWN ON THESE DRAWINGS UNTIL A PERMIT FOR INDUSTRIAL WASTEWATER DISCHARGE HAS BEEN ISSUED BY THE SANITATION DISTRICTS FOR SAID CONNECTION. BEFORE BREAKING INTO OR CONSTRUCTION ON A COUNTY SANITATION DISTRICT SEWER AND PRIOR TO FINAL ACCEPTANCE OF THE PROJECT, SANITATION DISTRICT INSPECTOR SHALL BE NOTIFIED BY PHONE - 962-8605, ADDRESS SO THAT REQUIRED INSPECTION CAN BE MADE.
PAGE 2 REVISION ALIGNMENT OF SEWER MAINLINE & PROFILE FROM STA. 0+00 TO STA. 2+00.00 BACK TO DESIGN PRIOR TO REVISION No. 2.	PAGE 3 REVISION ALIGNMENT OF SEWER MAINLINE & PROFILE FROM STA. 2+00 TO STA. 4+00.00 BACK TO DESIGN PRIOR TO REVISION No. 2.	
PAGE 4 REVISION ALIGNMENT OF SEWER MAINLINE & PROFILE FROM STA. 4+00 TO STA. 6+00.00 BACK TO DESIGN PRIOR TO REVISION No. 2.	PAGE 5 REVISION ALIGNMENT OF SEWER MAINLINE & PROFILE FROM STA. 6+00 TO STA. 8+00.00 BACK TO DESIGN PRIOR TO REVISION No. 2.	
PAGE 6 REVISION ALIGNMENT OF SEWER MAINLINE & PROFILE FROM STA. 8+00 TO STA. 10+00.00 BACK TO DESIGN PRIOR TO REVISION No. 2.	PAGE 7 REVISION ALIGNMENT OF SEWER MAINLINE & PROFILE FROM STA. 10+00 TO STA. 12+00.00 BACK TO DESIGN PRIOR TO REVISION No. 2.	

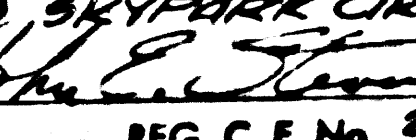


GENERAL NOTES: DOUBLE SCALE

- EXISTING ARE IN THE ABOVE U.S.C. & G.S. MERIDIAN OF 1928.
- NO DIVISIONS SHALL BE MADE IN THESE PLANS WITHOUT THE APPROVAL OF THE COUNTY ENGINEER.
- NO REPRESENTATIVE OF THE COUNTY ENGINEER WILL SURVEY OR LAY OUT ANY PORTION OF THE WORK.
- GRADES TO WHICH THIS IMPROVEMENT IS TO BE CONSTRUCTED ARE SHOWN ON PLANS AND PROFILE GRADE POINTS FOR TOP OF CURB, CENTER LINE OF STREETS, OR CENTER LINE OF ALLEYS ARE SHOWN BY CIRCLES ON PROFILES AT ALL POINTS BETWEEN DESIGN POINTS THE GRADE SHALL BE ESTABLISHED SO AS TO CONFORM TO A STRAIGHT LINE DRAWN BETWEEN SAID DESIGNATED POINTS.
- THE PRIVATE ENGINEER SHALL FURNISH THE COUNTY ENGINEER WITH GRADE SHEETS AND STATIONING FOR ALL HOUSE LATERALS AND "T" OR "Y" BRANCHES AND SHALL PROVIDE STAKES FOR THEM AT THEIR PROPER LOCATIONS WITH STATIONING PLAINLY MARKED. ALL HOUSE LATERALS SHALL BE CONSTRUCTED IN A STRAIGHT ALIGNMENT AT RIGHT ANGLES FROM THE MAIN LINE SEWER EXCEPT AS SHOWN ON THE PLANS. HOUSE LATERALS FROM CHIMNEYS SHALL NOT HAVE AN ANGLE OF LESS THAN 45° WITH THE SEWER. ANY CHANGE IN ALIGNMENT SHALL BE REQUESTED IN WRITING BY THE PRIVATE ENGINEER.
- THE PRIVATE ENGINEER SHALL FURNISH THE HOUSE LATERAL SEWER AT THE PROPERTY LINE BELOW THE TOP OF BODY OF ADJACENT ELEVATION FOR EACH HOUSE LATERAL ON THE GRADE SHEET.
- BEFORE WORK CAN BE STARTED, THE CONTRACTOR MUST OBTAIN A PERMIT TO EXCAVATE IN COUNTY STREETS FROM THE L.A. COUNTY ROAD DEPT., DISTRICT OFFICE NO. 1, AND PAY A FEE TO THE COUNTY ENGINEER & SURVEYOR, SAN OFFICE REGIONAL OFFICE TO COVER THE COST OF CONSTRUCTION INSPECTION AND RECORD PLANS.
- IF WORK IS TO BE DONE IN A STATE HIGHWAY, A PERMIT MUST BE OBTAINED FROM THE STATE OF CALIFORNIA, DIVISION OF HIGHWAYS, 120 SOUTH SHAWNEE STREET, LOS ANGELES, CALIFORNIA.
- APPROVAL OF THIS PLAN BY THE COUNTY OF LOS ANGELES DOES NOT CONSTITUTE A REPRESENTATION AS TO THE ACCURACY OF THE LOCATION OF OR THE EXISTENCE OR NON-EXISTENCE OF ANY UNDERGROUND UTILITY PIPE, OR STRUCTURE WITHIN THE LIMITS OF THIS PROJECT. THIS NOTE APPLIES TO ALL PAGES.
- BEFORE SECTION 718.41 OF THE STANDARD SPECIFICATIONS FOR PUBLIC WORKS CONSTRUCTION (SECTION 200-2) IS APPLIED TO THE REQUIRED SEWER CONSTRUCTION PERMIT BY THE COUNTY ENGINEER, THE CONTRACTOR SHALL OBTAIN A PERMIT FROM THE COUNTY ENGINEER, COUNTY DIVISION OF INDUSTRIAL SAFETY AND SHALL FILE A CERTIFICATE OF WORKMAN COMPENSATION INSURANCE WITH THE COUNTY ENGINEER.
- ①② INDICATES ALL SHALL NOT BE BUILT UPSTREAM OF THIS STATION.

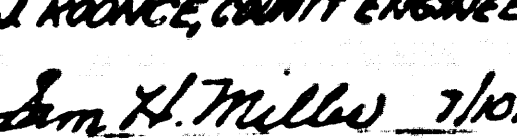
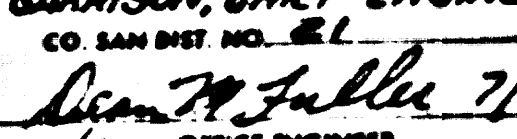
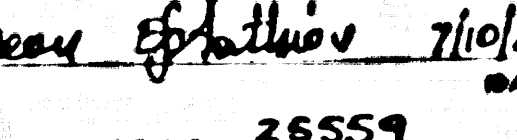
CONSTRUCTION NOTES:

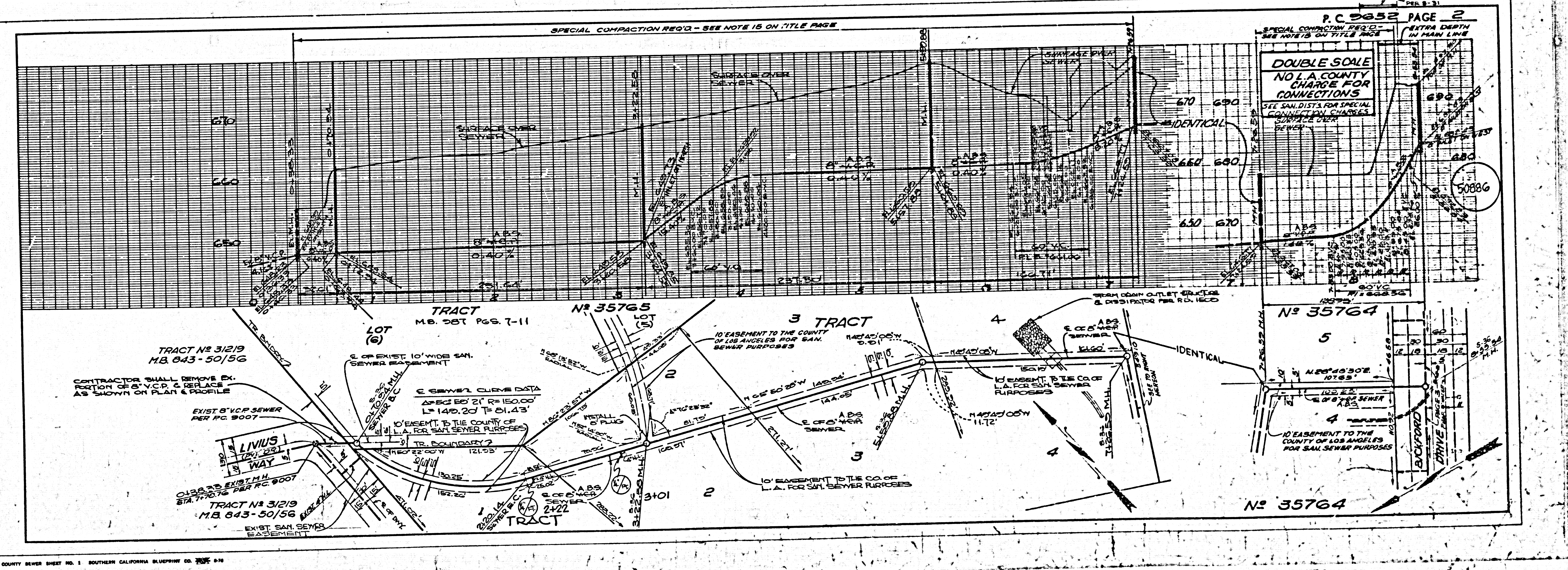
- WORK SHALL BE CONSTRUCTED ACCORDING TO THE STANDARD SPECIFICATIONS FOR PUBLIC WORKS CONSTRUCTION (SECTION 200-2) AND COUNTY ENGINEER SPECIAL PROVISIONS FOR THE CONSTRUCTION OF SANITARY SEWERS BATH (SECTION 200-2) AND SHALL BE PROVIDED ONLY IN THE PRESENCE OF THE COUNTY ENGINEER.
- THE CONTRACTOR SHALL NOTIFY THE ENVIRONMENTAL DEVELOPMENT DIVISION BY TELEPHONE, 962-250-888, AT LEAST THIRTY (30) DAYS BEFORE STARTING ANY WORK UNDER THIS CONTRACT.
- HOUSE LATERALS TO BE CONSTRUCTED WITH INVERTS AT PROPERTY LINE & FIVE FEET BELOW TOP OF ADJACENT GRADE EXCEPT AS NOTED.
- PIPE OR BRANCHES MAY BE USED FOR CONNECTIONS TO MAINLINE SEWER EXCEPT AS NOTED.
- ALL STRUCTURES SHALL BE BUILT BRICK MANHOLE PER S-3 OR PRECAST CONCRETE MANHOLES PER S-3A, EXCEPT AS NOTED.
- PROVIDE STAKES ON THE PROPERTY LINE OR PROPERTY LINES PRODUCED AT RIGHT ANGLES TO THE SEWER LINE AT THE CENTER LINE OF EACH MANHOLE.
- MANHOLE TOPS IN UNIMPROVED RIGHTS OF WAY TO BE SIX INCHES ABOVE FINISHED GRADE.
- VERTICAL CLAY PIPE JOINTS SHALL BE TYPE "T" OR "P" PER STANDARD SPECIFICATIONS SECTION 200-2.
- IF A JOINT IS WITHIN THREE FEET OF THE SEWER WHICH IS NOT INDICATED ON THE PLANS, THE JOINT SHALL BE BRICK PER S-3, CASE II, TWO FEET ON EACH SIDE FROM THE POINT OF INTERFERENCE.
- IF DURING THE COURSE OF CONSTRUCTION IT IS DETERMINED THAT THERE IS LESS THAN FOUR FEET OF COVER OVER THE TOP OF A MAIN LINE OR HOUSE LATERAL V.C.P. SEWER WHICH IS NOT INDICATED ON THE PLANS, THE PIPE SHALL BE BRICK PER S-3, CASE II UNLESS OTHERWISE APPROVED BY THE COUNTY ENGINEER.
- ALL JOINTS BETWEEN CAST IRON PIPE AND VITRIFIED CLAY PIPE SHALL BE MADE WITH A RUBBER GLEVE JOINT, TYPE "C" OR "F". FIFTH BURNHAM IS NECESSARY PER STANDARD SPECIFICATIONS SECTION 200-2.
- SEWERS TO BE BUILT FOR BRICK PER SECTION 200-2 OF THE STANDARD SPECIFICATIONS AND SPECIAL PROVISIONS.
- RESURFACE ALL TRENCHES WITHIN PAVED AREAS TO MEET L.A. COUNTY ROAD DEPT. OR CALIFORNIA STATE HIGHWAY REQUIREMENTS IN ACCORDANCE WITH PERMITS.
- FINAL COMPLIANCE WITH SECTION 200-2.8 OF THE SPECIAL PROVISIONS WILL BE REQUIRED FOR BACKFILL IN STREETS. CERTIFICATION OF BACKFILL COMPACTION AND SAME EQUIVALENTS BY A QUALIFIED, REGISTERED TESTING LABORATORY SHALL BE PROVIDED BY THE PERMITTEE PRIOR TO THE ISSUANCE OF A CERTIFICATE OF PARTIAL ACCEPTANCE.
- SPECIAL PROVISIONS:** ALL EXISTING SEWER MAINS TO BE REMOVED OR REPLACED BY THE CONTRACTOR SHALL BE REMOVED OR REPLACED BY THE CONTRACTOR. ALL EXISTING SEWER MAINS TO BE REMOVED OR REPLACED BY THE CONTRACTOR SHALL BE REMOVED OR REPLACED BY THE CONTRACTOR. ALL EXISTING SEWER MAINS TO BE REMOVED OR REPLACED BY THE CONTRACTOR SHALL BE REMOVED OR REPLACED BY THE CONTRACTOR.

PROFILE, ALIGNMENT AND GRADE OF SANITARY SEWERS PAGE 1
 TO BE CONSTRUCTED IN
TRACT No 35764
PRIVATE CONTRACT NO. 9652
 W.S. 39-44
 5 SHEETS, 10 PAGES
 50885
 SCALE: VERT. 1"=8' HORIZ. 1"=80'
 DECEMBER, 1979
 PREPARED IN THE OFFICES OF
PSOMAS & ASSOCIATES
 17910 SUNKY PARK CIRCLE - IRVINE, CALIF. (714) 764-7873
 BY:  DATE: 12/14/79
 REG. C.E. No. 22226

THE FOLLOWING LATEST REVISED STANDARD PLANS ON FILE IN THE OFFICE OF THE COUNTY ENGINEER SHALL APPLY IN THE CONSTRUCTION OF THIS PROJECT:

100000	MINIMUM PUBLIC SANITARY REQUIREMENTS	S-1
100000	BRICK MANHOLE	S-2
100000	STANDARD MANHOLE STEP	S-3
100000	REDDING FOR SEWER PIPE	S-4
100000	GRADING AND BEARING	S-5
100000	PIPE OR THE SUPPORT	S-6
100000	ALLOWABLE TRENCH WIDTHS	S-7
100000	LOADING MANHOLE FRAME AND COVER	S-8
100000	NON-REINFORCED PRECAST CONCRETE MANHOLE	S-9
100000	ANCHOR BLOCK	S-10
100000	SPECIAL SUPPORT AND PROTECTION	S-11
100000	EROSION PROTECTION IN STEEP SLOPES	S-12

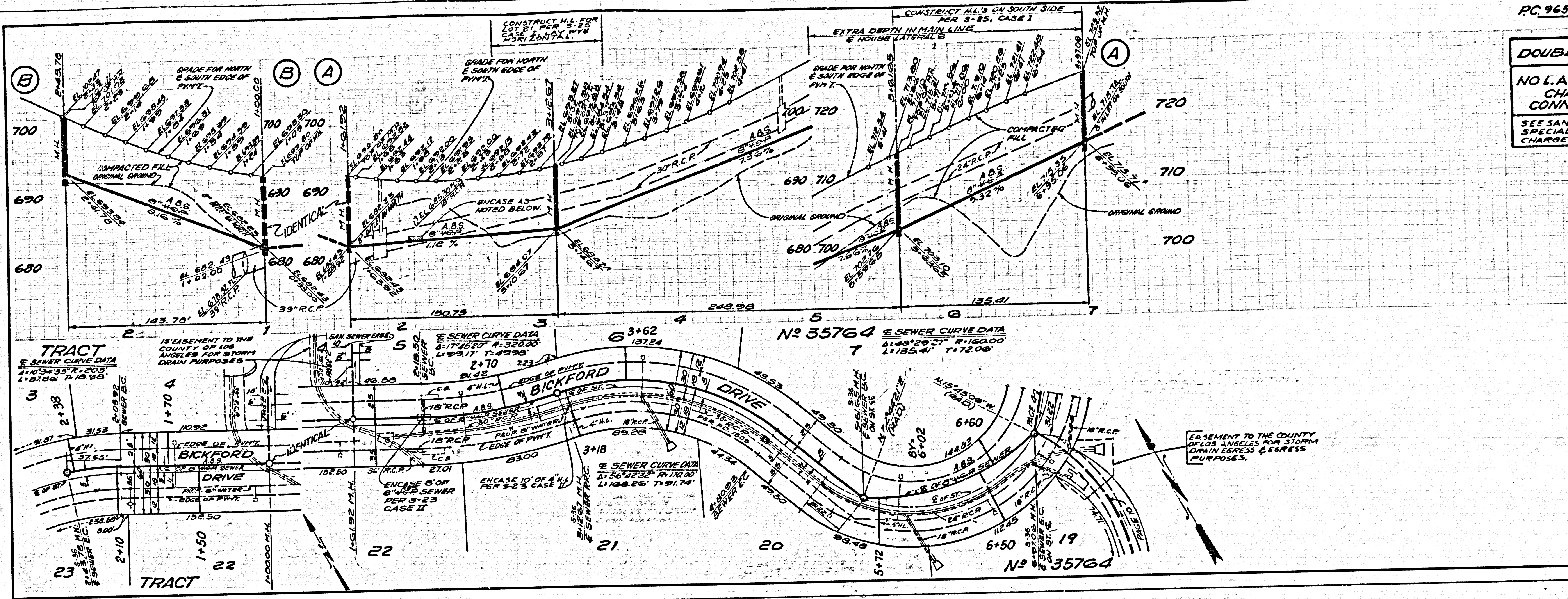
COUNTY OF LOS ANGELES, CALIFORNIA
 STEPHEN J. KENNEDY, COUNTY ENGINEER WALTER E. CARLSON, CHIEF ENGINEER
 CO. SAN DIST. NO. 21
 APPROVED:  DATE: 7/10/81 APPROVED:  DATE: 7/17/81
 SAN. DIVISION REGIONAL ENGINEER DISTRICT OFFICE ENGINEER
 CHECKED:  DATE: 7/10/81
 REG. C.E. NO. 26559
 LA PUENTE BLDG. DIST. E-00



DOUBLE SCALE
NO L.A. COUNTY
CHARGE FOR
CONNECTIONS
SEE SAN. DIST'S FOR
SPECIAL CONNECTION
CHARGES

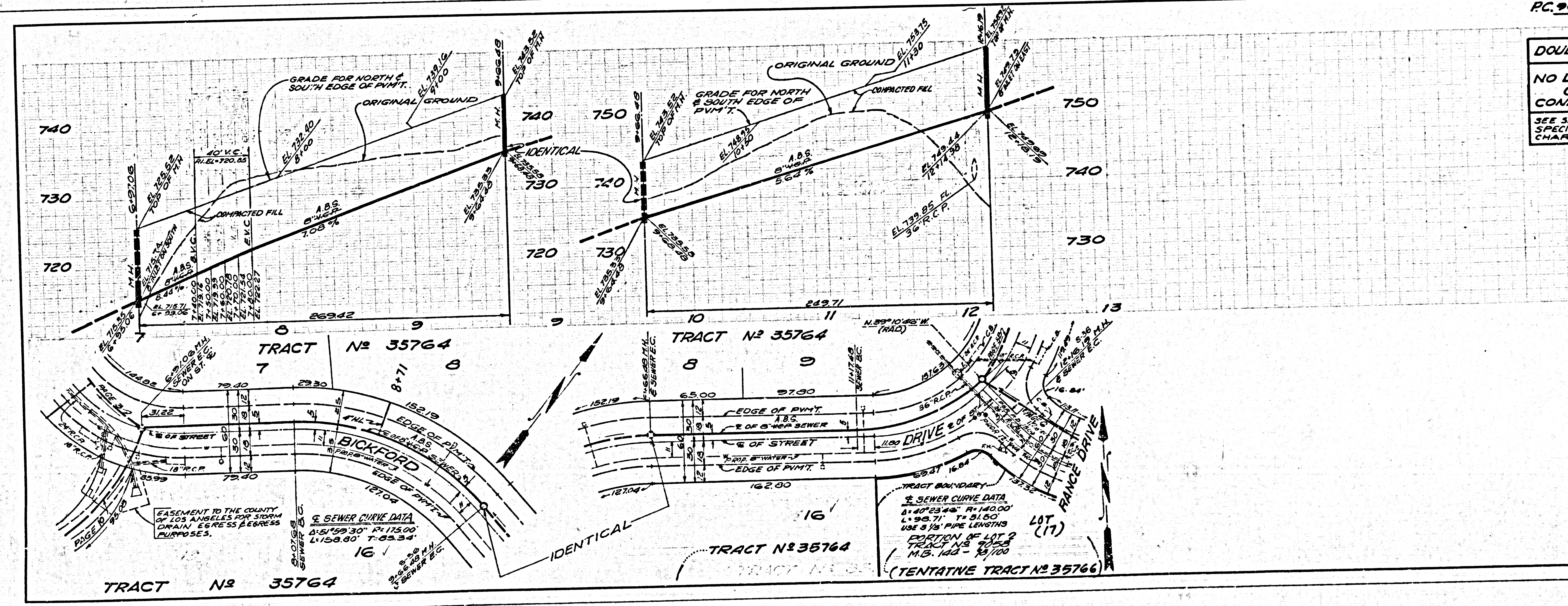
5' SEE SAN. DIST.

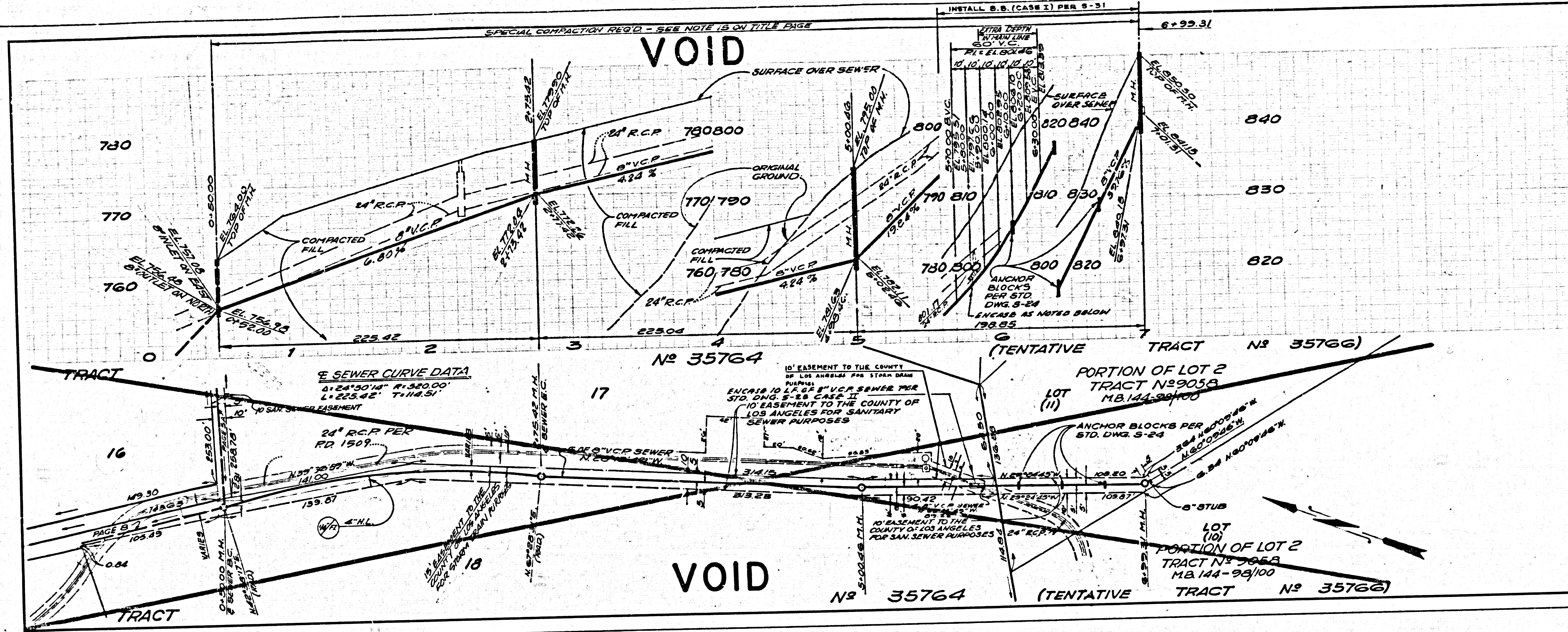
50887



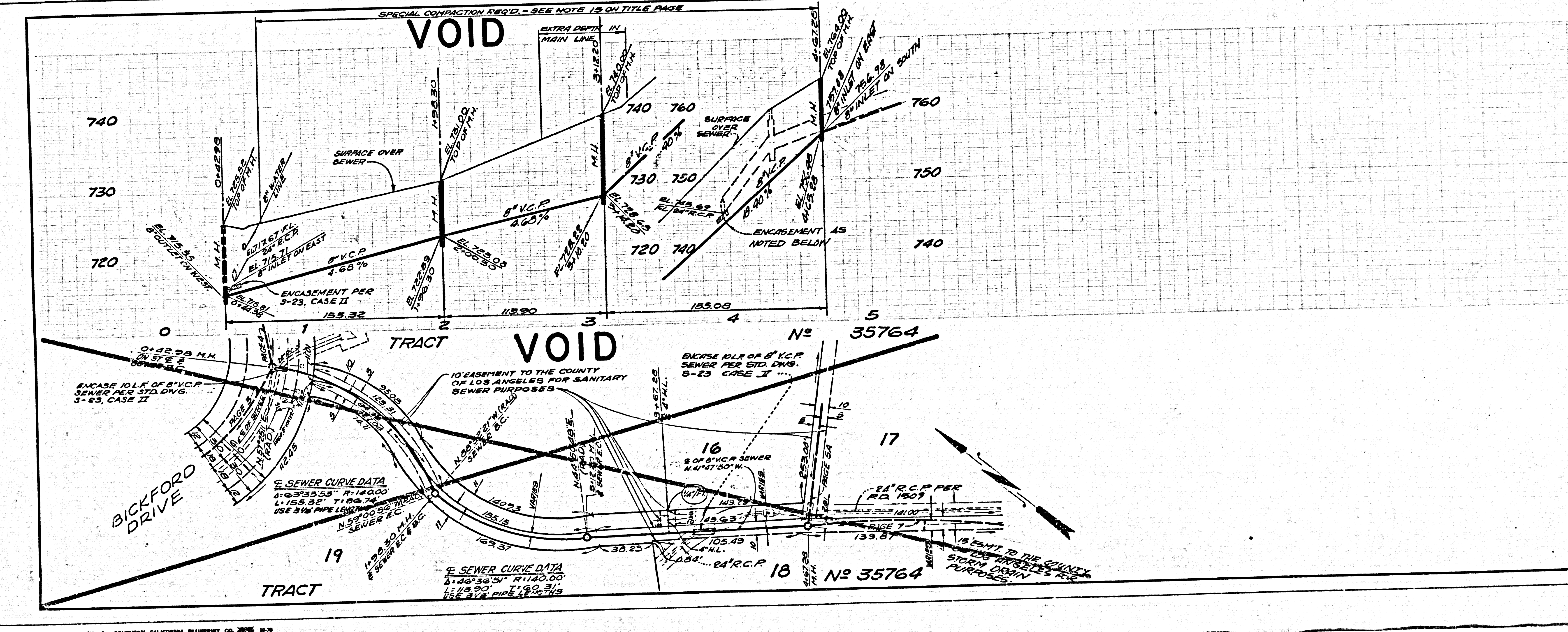
DOUBLE SCALE
NO L.A. COUNTY
CHARGE FOR
CONNECTIONS
SEE SAN. DIST'S FOR
SPECIAL CONNECTION
CHARGES

50888





DOUBLE SCALE
 NO L.A. COUNTY
 CHARGE FOR
 CONNECTIONS
 SEE SAN. DIST. FOR
 SPECIAL CONNECTION
 CHARGES



DOUBLE SCALE
 NO L.A. COUNTY
 CHARGE FOR
 CONNECTIONS
 SEE SAN. DIST. FOR
 SPECIAL CONNECTION
 CHARGES

