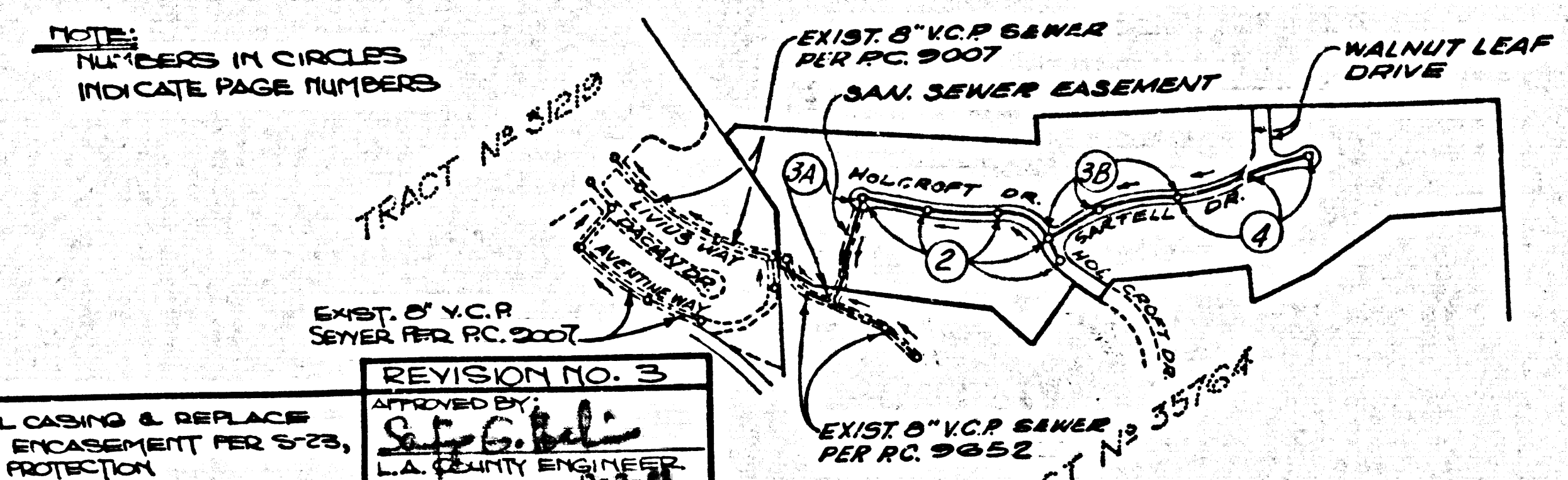


B.M. C61820 ELEV 872.536
 BT SPR IN CONC. HOWL IS FT N.C.L.
 BREA CANYON CUT-OFF RD 0.85 MI. N.
 OF BREA CANYON RD. 530 FT. FROM
 SUMMIT MKD (B.M. 3)
 OTTERBEIN QUAD. 1975

REVISION NO. 6	APPROVED BY: Sally G. Bell CHIEF OF PUBLIC WORKS DATE: 1-23-83
PAGE 4	MODIFY PIPE PROTECTION STRUCTURE TO CONFORM TO EXISTING FIELD CONDITIONS.
REVISION NO. 5	APPROVED BY: Sally G. Bell CHIEF OF PUBLIC WORKS DATE: 1-23-83
PAGE 3A	REVISE HORIZONTAL ALIGNMENT OF MAINLINE SEWER FROM STA. 0+10.00 TO STA. 0+11.50 ADD M.H. AT STA. 1+50
REVISION NO. 4	APPROVED BY: Sally G. Bell L.A. COUNTY ENGINEER DATE: 5-12-84
PAGE 3A	SHOW PROPOSED RETAINING WALL IN PLAN & PROFILE AT APPROXIMATE STATION 3+60



REVISION NO. 3	APPROVED BY: Sally G. Bell CHIEF OF PUBLIC WORKS DATE: 1-23-83
PAGE 4	DELETE STEEL CASING & REPLACE W/ CONCRETE ENCASEMENT PER STS, CASE II ON PIPE PROTECTION
REVISION NO. 2	APPROVED BY: Robert David Sabat L.A. COUNTY ENGINEER DATE: 1/18/83
PAGE 3A	REVISE VERTICAL DEPTH & LENGTH OF COVER MAINLINE FROM STA. 0+22.80 TO 2+10.00. ADD DETAIL PIPE PROTECTION.
REVISION NO. 1	APPROVED BY: Robert David Sabat L.A. COUNTY ENGINEER DATE: 1/12/83
PAGE 3A	REVISE VERTICAL ALIGNMENT OF MAINLINE SEWER FROM STA. 2+10.00 TO STA. 0+50
PAGE 2	REVISE VERTICAL ALIGNMENT OF MAINLINE SEWER & EDGE OF PAVEMENT GRADES FROM STA. 0+50 TO STA. 1+11.00
REVISIONS BY: LIND & HILLERUD, INC.	
SANIT. SARGACHO P.C.E. 19233 DATE: JAN 10, 1983	

INDEX MAP
 TRACT NO 35765
 PC 9653
 SCALE: 1"=80'

PLEASE NO PERMITS UNTIL PC 9653 IS ACCEPTED

NO CONNECTION FOR THE DISPOSAL OF INDUSTRIAL WASTES SHALL BE MADE TO SEWERS SHOWN ON THESE DRAWINGS UNTIL A PERMIT FOR INDUSTRIAL WASTEWATER DISCHARGE HAS BEEN ISSUED BY THE SANITATION DISTRICTS FOR SAID CONNECTION. BEFORE BREAKING INTO OR CONSTRUCTION ON A COUNTY SANITATION DISTRICT SEWER AND PRIOR TO FINAL ACCEPTANCE OF THE PROJECT, SANITATION DISTRICT INSPECTOR SHALL BE NOTIFIED BY PHONE 796-8605. PROVISIONS TO THAT REQUIRED INSPECTION CAN BE MADE.

GENERAL NOTES: DOUBLE SCALE

- ELEVATIONS ARE IN FEET ABOVE U.S.C. & G.S. SEA LEVEL DATUM OF 1988.
- NO REVISIONS SHALL BE MADE IN THESE PLANS WITHOUT THE APPROVAL OF THE COUNTY ENGINEER.
- NO REPRESENTATIVE OF THE COUNTY ENGINEER SHALL SURVEY OR LAY OUT ANY PORTION OF THE WORK.
- GRADES TO WHICH THIS IMPROVEMENT IS TO BE CONSTRUCTED ARE SHOWN ON PLANS AND PROFILE GRADES FOR "E" FOR TOP OF CURBS, CENTER LINE OF STREETS, OR CENTER LINE OF ALLEYS ARE SHOWN BY CIRCLES. ON PROFILES AT ALL POINTS BETWEEN SAID POINTS THE GRADES SHALL BE ESTABLISHED SO AS TO CONFORM TO A STRAIGHT LINE DRAWN BETWEEN SAID DESIGNATED POINTS.
- THE PRIVATE ENGINEER SHALL FURNISH THE COUNTY ENGINEER WITH GRADE SHEETS AND STATIONING FOR ALL HOUSE LATERALS AND "E" OR "T" BRANCHES AND SHALL PROVIDE STAKES FOR THEM AT THEIR PROPER LOCATIONS WITH STATIONINGS PLANNED AND "E" OR "T" BRANCHES AND SHALL BE CONSTRUCTED AT RIGHT ANGLES FROM THE MAIN LINE SEWER UNLESS OTHERWISE SHOWN ON THE PLANS. HOUSE LATERALS FROM CHIMNEYS SHALL HAVE AN ANGLE OF LESS THAN 45° WITH THE MAIN LINE SEWER. ANY CHANGE IN ALIGNMENT SHALL BE REQUESTED IN WRITING BY THE PRIVATE ENGINEER.
- THE PRIVATE ENGINEER SHALL FURNISH THE HOUSE LATERAL DEPTH AT THE PROPERTY LINE BELOW THE TOP OF CURB ELEVATION FOR EACH HOUSE LATERAL ON THE GRADE SHEET.
- BEFORE WORK CAN BE STARTED, THE CONTRACTOR MUST OBTAIN A PERMIT TO EXCAVATE IN COUNTY TRACTS FROM THE L.A. COUNTY ROAD DEPT., DISTRICT OFFICE NO. 7, AND PAY A FEE TO THE COUNTY ENGINEER, 5015 BROADWAY AVENUE, SAN DIMAS, CALIF. 91774 TO COVER THE COST OF CONSTRUCTION INSPECTION AND RECORD PLANS.
- IF WORK IS TO BE DONE IN A STATE HIGHWAY, A PERMIT MUST BE OBTAINED FROM THE STATE OF CALIFORNIA, DIVISION OF HIGHWAYS, 130 SOUTH SPRING STREET, LOS ANGELES, CALIFORNIA.
- APPROVAL OF THIS PLAN BY THE COUNTY OF LOS ANGELES DOES NOT CONSTITUTE A REPRESENTATION AS TO THE ACCURACY OF THE LOCATION OF OR THE EXISTENCE OR NON-EXISTENCE OF ANY UNDERGROUND UTILITY PIPES, OR STRUCTURE WITHIN THE LIMITS OF THIS PROJECT. THIS NOTE APPLIES TO ALL PAGES.
- REFER TO SECTION 118.4.1 OF THE STANDARD SPECIFICATIONS, ENGINEERING SAFETY ORDER.
- REFER TO SECTION 118.4.1 OF THE STANDARD SPECIFICATIONS, ENGINEERING SAFETY ORDER.
- REFER TO SECTION 118.4.1 OF THE STANDARD SPECIFICATIONS, ENGINEERING SAFETY ORDER.
- REFER TO SECTION 118.4.1 OF THE STANDARD SPECIFICATIONS, ENGINEERING SAFETY ORDER.

CONSTRUCTION NOTES:

- WORK SHALL BE CONSTRUCTED ACCORDING TO THE STANDARD SPECIFICATIONS FOR PUBLIC WORKS CONSTRUCTION (1979 EDITION) WITH THE EXCEPTIONS AND COUNTY ENGINEER SPECIAL PROVISIONS FOR THE CONSTRUCTION OF SANITARY SEWERS DATED SEPTEMBER 24, 1978 AND SHALL BE PROSECUTED ONLY IN THE PRESENCE OF THE COUNTY ENGINEER.
- THE CONTRACTOR SHALL NOTIFY THE SANITATION DISTRICTS OF THE PROJECT BY TELEPHONE (916) 796-8605 AT LEAST TWENTY-FOUR HOURS BEFORE STARTING ANY WORK UNDER THIS CONTRACT.
- HOUSE LATERALS TO BE CONSTRUCTED WITH INVERTS AT PROPERTY LINE & FEET BELOW 2" PIPE GRADE EXCEPT AS NOTED.
- WYE OR THE BRANCHES MAY BE USED FOR CONNECTIONS TO MAINLINE SEWERS EXCEPT AS NOTED.
- ALL STRUCTURES SHALL BE EITHER BRICK MANNHOLES PER 30 OR PRECAST CONCRETE MANNHOLES PER 25, EXCEPT AS NOTED.
- PROVIDE STAKES ON THE PROPERTY LINE OR PROPERTY LINES PRODUCED AT RIGHT ANGLES TO THE SEWER LINE AT THE CENTER LINE OF EACH MANHOLE.
- MANNHOLE FOR PIPE UNIMPROVED RIGHTS OF WAY TO BE 32 INCHES ABOVE FINISHED GRADE.
- VITRIFIED CLAY PIPE JOINTS SHALL BE TYPE "D" OR "Q" PER STANDARD SPECIFICATIONS SECTION 208-2.
- IF A POWER POLE IS WITHIN THREE FEET OF THE SEWER, THE SEWER SHALL BE SHIELDED, PER S-22, CASE II, TWO FEET ON EACH SIDE FROM THE POINT OF INTERFERENCE.
- IF DURING THE COURSE OF CONSTRUCTION IT IS DETERMINED THAT THERE IS LESS THAN 18" FEET OF COVER OVER THE TOP OF A MAIN LINE OR HOUSE LATERAL V.C.P. SEWER WHICH IS NOT INDICATED ON THE PLANS, THE PIPE SHALL BE SHIELDED PER S-22, CASE II UNLESS OTHERWISE APPROVED BY THE COUNTY ENGINEER.
- ALL JOINTS BETWEEN CAST IRON PIPE AND VITRIFIED CLAY PIPE SHALL BE MADE WITH A RUBBER SLEEVE JOINT, TYPE "C" OR "D", WITH GROUTING IF NECESSARY PER STANDARD SPECIFICATIONS, SECTION 208-2.
- SEWERS TO BE TESTED FOR LEAKAGE PER SECTION 208-4 OF THE STANDARD SPECIFICATIONS AND SPECIAL PROVISIONS.
- RESURFACE ALL FINISHED DRIVEWAYS WITHIN AREAS TO MEET L.A. COUNTY ROAD DEPT. OR CALIFORNIA STATE HIGHWAY REQUIREMENTS IN ACCORDANCE WITH PERMITS.
- FULL COMPLIANCE WITH SECTION 208.1.9 OF THE SPECIAL PROVISIONS WILL BE REQUIRED FOR BACKFILL IN STREETS. CERTIFICATION OF BACKFILL COMPLETION AND SAID REQUIREMENTS BY A QUALIFIED, REGISTERED TESTING LABORATORY SHALL BE PROVIDED BY THE PERMITTEE PRIOR TO THE ISSUANCE OF A CERTIFICATE OF PARTIAL ACCEPTANCE.

LEGEND:

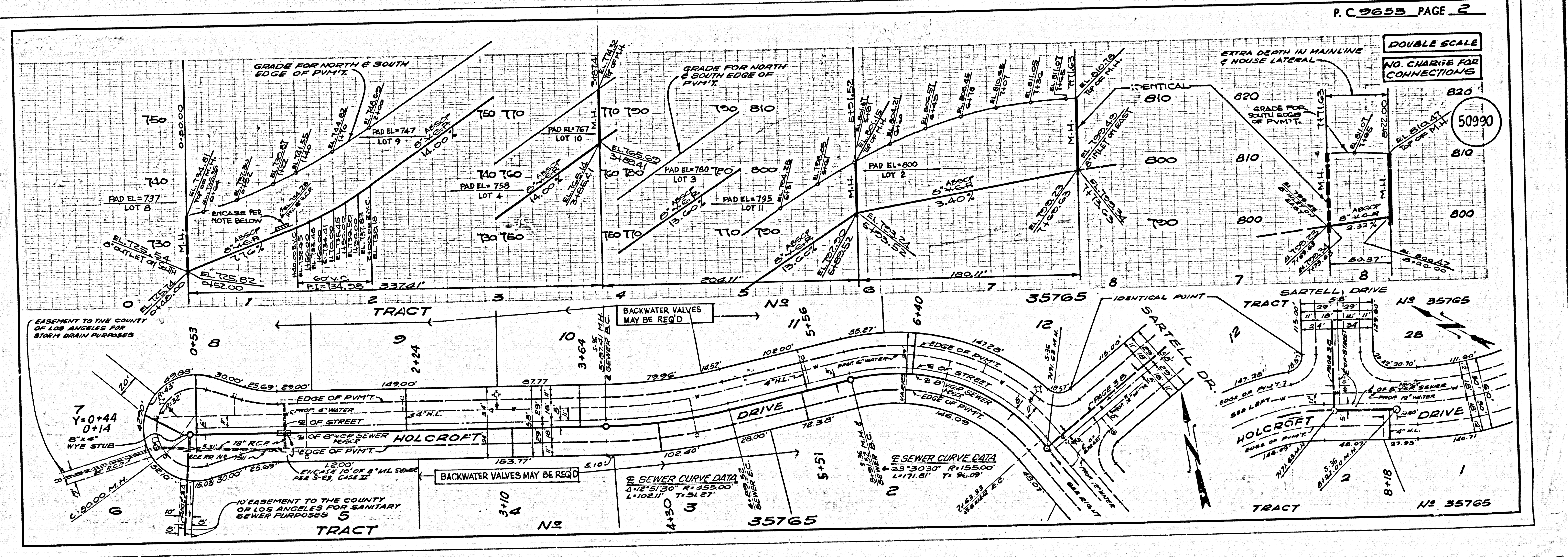
- MINIMUM PUBLIC SAFETY REQUIREMENTS 5-1
- BRICK MANNHOLE 5-2
- STANDARD MANNHOLE STEP 5-7
- BRICKING FOR SEWER PIPE 5-8
- CRACKING AND ENCASEMENT 5-8
- WYE OR THE SUPPORT 5-8
- ALLOWABLE TRENCH WIDTHS 5-8
- LOCKING MANNHOLE FRAM AND COVER 5-8
- NON-IMPREGATED PRECAST CONCRETE MANNHOLE 5-8
- ANCHOR BLOCKS 5-8
- EROSION PROTECTION IN STEEP SLOPES 5-8

THE FOLLOWING LATEST REVISED STANDARD PLANS ON FILE IN THE OFFICE OF THE COUNTY ENGINEER SHALL APPLY IN THE CONSTRUCTION OF THIS PROJECT:

LEGEND:

- MINIMUM PUBLIC SAFETY REQUIREMENTS 5-1
- BRICK MANNHOLE 5-2
- STANDARD MANNHOLE STEP 5-7
- BRICKING FOR SEWER PIPE 5-8
- CRACKING AND ENCASEMENT 5-8
- WYE OR THE SUPPORT 5-8
- ALLOWABLE TRENCH WIDTHS 5-8
- LOCKING MANNHOLE FRAM AND COVER 5-8
- NON-IMPREGATED PRECAST CONCRETE MANNHOLE 5-8
- ANCHOR BLOCKS 5-8
- EROSION PROTECTION IN STEEP SLOPES 5-8

COUNTY OF LOS ANGELES, CALIFORNIA
 STEPHEN J. KOONCE, COUNTY ENGINEER
 APPROVED: Walter B. Garrison CHIEF ENGINEER
 DATE: 7/11/84
 CHECKED: Dean Stephens DATE: 7/10/84
 REG. C.E. NO. 25559
 BLDG. DIST. 200



P. C. 9653 PAGE 2
DOUBLE SCALE
 NO CHARGE FOR CONNECTIONS
 50999

