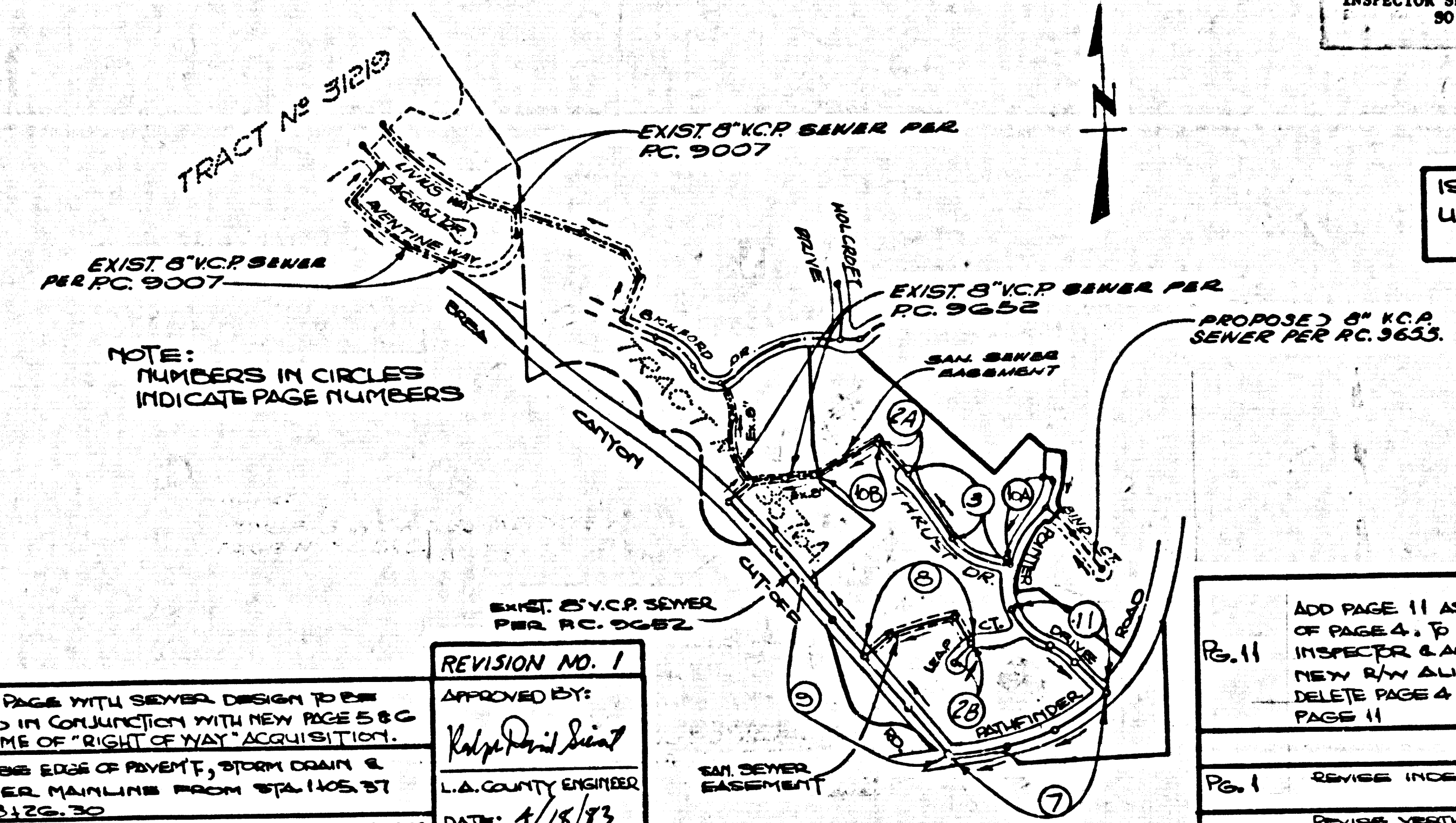


B.M. C.G. 1220 ELEV 872.336
 BY SPK. IN CONC. HDWL 15 FT N. 4/4
 BREA CANYON CUTOFF RD + 0.85 MI. N.
 OF BREA CANYON RD. 550 FT FROM
 SUMMIT MKD (B.M. 9)
 OTTERBEIN QUAD. 19.75



NOTE: NUMBERS IN CIRCLES INDICATE PAGE NUMBERS

| | | |
|----------------|---|---------------|
| REVISION NO. 1 | APPROVED BY: <i>Ralph DeLuca</i> | DATE: 1/18/83 |
| PAGE 0 | ADD PAGE WITH SEWER DESIGN TO BE USED IN CONJUNCTION WITH NEW PAGE 5 & 6 AT TIME OF "RIGHT OF WAY" ACQUISITION. | |
| PAGE 7 | DESIGN EDGE OF PRIVATE, WYOMING COUNTY & SEWER MAINLINE FROM STA. 105+00 TO STA. 105+30. | |
| PAGES 5 & 6 | ADD NEW PAGES 5 & 6 TO REPLACE OLD PAGES 5 & 6 AT TIME OF "RIGHT OF WAY" ACQUISITION. REVISE EDGE OF PRIVATE, WYOMING COUNTY & SEWER MAINLINE ALIGNMENT BOTH VERTICALLY & HORIZONTALLY FROM STA. 105+30 TO STA. 105+50. | |
| PAGE 4 | DESIGN EDGE OF PRIVATE, WYOMING COUNTY & SEWER MAINLINE ALIGNMENT BOTH VERTICALLY & HORIZONTALLY FROM STA. 105+30 TO STA. 105+50. | |
| PAGE 2B | SEWER DESIGN FROM STA. 105+00 TO STA. 105+50. | |

REVISIONS BY:
 LIND & HILLERUD, INC.
 JOHN H. BARRACINO R.C.E. 19233 DATE: FEB. 21, 1983

INDEX MAP
 TRACT NO. 35766
 PC. 9654
 SCALE: 1"=600'

NO CONNECTION FOR THE DISPOSAL OF INDUSTRIAL WASTERS SHALL BE MADE TO SEWERS SHOWN ON THESE DRAWINGS UNTIL A PERMIT FOR INDUSTRIAL WASTEWATER DISCHARGE HAS BEEN ISSUED BY THE SANITATION DISTRICTS FOR SAID CONNECTION.

BEFORE BREAKING INTO OR CONSTRUCTION OF A COUNTY SANITATION DISTRICT SEWER AND PRIOR TO FINAL ACCEPTANCE OF THE PROJECT, SANITATION DISTRICT INSPECTOR SHALL BE NOTIFIED BY PHONE - 942-8605, SO THAT REQUIRED INSPECTION CAN BE MADE.

ISSUE NO PERMITS UNTIL P.C. 9652 IS ACCEPTED

| | | |
|----------------|---|---------------|
| REVISION NO. 3 | APPROVED BY: <i>Sam G. Hill</i> | DATE: 7-25-85 |
| Re. 11 | ADD PAGE 11 AS AN ALTERNATE DESIGN OF PAGE 4. TO BE INTERPRETED BY COUNTY INSPECTOR & ACCEPTED ONLY AFTER NEW R/W ALIGNMENT IS DEDICATED. DELETE PAGE 4 UPON ACCEPTANCE OF PAGE 11. | |
| REVISION NO. 2 | APPROVED BY: <i>Sam G. Hill</i> | DATE: 5-27-85 |
| Re. 1 | REVISE INDEX MAP | |
| Re. 2A | REVISE VERTICAL DESIGN OF MAINLINE SEWER FROM STA. 105+00 TO STA. 105+50. DELETE M.L. FROM STA. 105+00 TO STA. 105+50. | |
| Re. 2B | REVISE VERTICAL DESIGN OF STREET & MAINLINE SEWER SECTIONS FROM STA. 105+00 TO STA. 105+50. | |
| Re. 3 | REVISE VERTICAL DESIGN OF MAINLINE FROM STA. 105+00 TO STA. 105+50. | |
| Re. 10A | REVISE MAINLINE GRADES BY PVT. DWD OF FROM STA. 105+00 TO STA. 105+50. | |
| Re. 10B | ADD DESIGN FROM STA. 105+00 TO STA. 105+50. | |

- GENERAL NOTES: **DOUBLE SCALE**
- ELEVATIONS ARE IN FEET ABOVE U.S.C. & G.S. SEA LEVEL UNLESS OTHERWISE NOTED.
 - NO "T" BRANCHES SHALL BE MADE IN THESE SEWERS WITHOUT THE APPROVAL OF THE COUNTY ENGINEER.
 - NO REPRESENTATIVE OF THE COUNTY ENGINEER WILL SURVEY OR LAY OUT ANY PORTION OF THE WORK.
 - GRADES TO WHICH THIS IMPROVEMENT IS TO BE CONSTRUCTED ARE SHOWN ON PLANS AND PROFILES. GRADE POINTS FOR TOP OF CURVE, CENTER LINE OF STREETS, OR CENTER LINE OF ALLEYS ARE SHOWN BY CIRCLES ON PROFILES. AT ALL POINTS BETWEEN DESIGNATED POINTS THE GRADE SHALL BE ESTABLISHED AS TO CONFORM TO A STRAIGHT LINE DRAWN BETWEEN SAID DESIGNATED POINTS.
 - THE PRIVATE ENGINEER SHALL FURNISH THE COUNTY ENGINEER WITH GRADE SHEETS AND STATIONING FOR ALL HOUSE LATERALS AND "T" OR "Y" BRANCHES AND SHALL PROVIDE STAKES FOR THEM AT THEIR PROPER LOCATIONS WITH STATIONING PLAINLY MARKED. ALL HOUSE LATERALS SHALL BE CONSTRUCTED IN A STRAIGHT ALIGNMENT AT RIGHT ANGLES FROM THE MAIN LINE SEWER EXCEPT AS SHOWN ON THE PLANS. HOUSE LATERALS FROM CHIMNEYS SHALL NOT HAVE AN ANGLE OF LESS THAN 45° WITH THE MAIN LINE SEWER. ANY CHANGE IN ALIGNMENT SHALL BE INDICATED IN THE WRITING BY THE PRIVATE ENGINEER.
 - THE PRIVATE ENGINEER SHALL FURNISH THE HOUSE LATERAL DEPTH AT THE PROPERTY LINE BELOW THE TOP OF CURB ELEVATION FOR EACH HOUSE LATERAL ON THE GRADE SHEET.
 - BEFORE WORK CAN BE STARTED, THE CONTRACTOR MUST OBTAIN A PERMIT TO EXCAVATE IN COUNTY STREETS FROM THE L.A. COUNTY ROAD DEPT., DISTRICT OFFICE NO. 7, AND PAY A FEE TO THE COUNTY ENGINEER, P.O. BOX 1078, JUDICIAL, BREA, CALIF. REGIONAL OFFICE, TO COVER THE COST OF CONSTRUCTION INSPECTION AND RECORD PLANS.
 - IF WORK IS TO BE DONE IN A STATE HIGHWAY, A PERMIT MUST BE OBTAINED FROM THE STATE OF CALIFORNIA, DIVISION OF HIGHWAYS, 138 SOUTH SPRING STREET, LOS ANGELES, CALIFORNIA.
 - APPROVAL OF THIS PLAN BY THE COUNTY OF LOS ANGELES DOES NOT CONSTITUTE A REPRESENTATION AS TO THE ACCURACY OF THE LOCATION OR OF THE EXISTENCE OR NON-EXISTENCE OF ANY UNDISCLOSED UTILITY PIPE, OR STRUCTURE WITHIN THE LIMITS OF THE PROJECT. THIS NOTE APPLIES TO ALL PAGES.
 - REFER TO SECTION 718.41 OF THE STANDARD SPECIFICATIONS, REGARDING SAFTY CAGES.
 - BEFORE TO BE SHOWN ON THE REQUIRED SEWER CONSTRUCTION PERMIT BY THE COUNTY ENGINEER, THE CONTRACTOR SHALL OBTAIN A PERMIT TO EXCAVATE FROM THE COUNTY ENGINEER, P.O. BOX 1078, JUDICIAL, BREA, CALIF. REGIONAL OFFICE, TO COVER THE COST OF CONSTRUCTION INSPECTION AND RECORD PLANS.
 - INDICATED "H.L." SHALL NOT BE BUILT UPSTREAM OF THIS STATION.

- CONSTRUCTION NOTES:
- WORK SHALL BE CONSTRUCTED ACCORDING TO THE STANDARD SPECIFICATIONS FOR PUBLIC WORKS CONSTRUCTION (THESE SPECIFICATIONS ARE AVAILABLE FROM THE COUNTY ENGINEER'S OFFICE) AND COUNTY ENGINEER SPECIAL PROVISIONS FOR THE CONSTRUCTION OF SANITARY SEWERS DATED 10/27/82. ALL SHALL BE PROSECUTED ONLY IN THE PRESENCE OF THE COUNTY ENGINEER.
 - THE CONTRACTOR SHALL NOTIFY THE COUNTY ENGINEER'S OFFICE BY TELEPHONE AT LEAST TWENTY-FOUR HOURS BEFORE STARTING ANY WORK UNDER THIS CONTRACT.
 - HOUSE LATERALS TO BE CONSTRUCTED WITH INVERTS AT PROPERTY LINE & PER SHOW $8\frac{1}{2}$ " GRADE EXCEPT AS NOTED.
 - WYE OR TE BRANCHES MAY BE USED FOR CONNECTIONS TO MAINTAIN SEWERS EXCEPT AS NOTED.
 - ALL STRUCTURES SHALL BE EITHER BRICK MANHOLES PER 8-3 OR PRECAST CONCRETE MANHOLES PER 8-3, EXCEPT AS NOTED.
 - PROVIDE STAKES ON THE PROPERTY LINE OR PROPERTY LINES THROUGHOUT AT RIGHT ANGLES TO THE SEWER LINE AT THE CENTER LINE OF EACH MANHOLE.
 - MANHOLES FOR UNIMPROVED PORTS OF WAY TO BE SIX INCHES ABOVE FINISHED GRADE.
 - VERTICAL CLAY PIPE JOINTS SHALL BE TYPE "B" OR "C" PER STANDARD SPECIFICATIONS SECTION 806.3.
 - IF A POWER POLE IS WITHIN THREE FEET OF THE SEWER, THE SEWER SHALL BE ENCASED, PER 8-3, CASE 2, TWO FEET ON EACH SIDE FROM THE POINT OF INTERFERENCE.
 - IF DURING THE COURSE OF CONSTRUCTION IT IS DETERMINED THAT THERE IS LESS THAN FOUR FEET OF COVER OVER THE TOP OF A MAIN LINE OR HOUSE LATERAL V.C.P. SEWER WHICH IS NOT INDICATED ON THE PLANS, THE PIPE SHALL BE ENCASED PER 8-3, CASE 2, UNLESS OTHERWISE APPROVED BY THE COUNTY ENGINEER.
 - ALL JOINTS BETWEEN CAST IRON PIPE AND VITRIFIED CLAY PIPE SHALL BE MADE WITH A RUBBER JOINT, TYPE "C" OR "D", FIFTH EDITION IF NECESSARY PER STANDARD SPECIFICATIONS, SECTION 306.2.
 - SEWERS TO BE TESTED FOR LEAKAGE PER SECTION 306.4 OF THE STANDARD SPECIFICATIONS AND SPECIAL PROVISIONS.
 - RESURFACE ALL TRENCHES WITHIN PAVED AREAS TO MEET L.A. COUNTY ROAD DEPT. OF CALIFORNIA STATE HIGHWAY REQUIREMENTS IN ACCORDANCE WITH PERMITS.
 - FULL COMPLIANCE WITH SECTION 306.1 OF THE STANDARD SPECIFICATIONS WILL BE REQUIRED FOR ACCEPTANCE IN STREET. CERTIFICATION OF SUFFICIENT COMPACTION AND SAND EQUIVALENT BY A QUALIFIED REGISTERED TESTING LABORATORY SHALL BE PROVIDED BY THE PERMITTEE FROM THE RESIDENCE OF A CERTIFICATE OF PARTIAL ACCEPTANCE.
 - SPECIAL BACKFILL IN DESIGNATED AREAS: SPECIAL BACKFILL AND SAND EQUIVALENT SHALL BE PROVIDED AS TO ACHIEVE THE NATURAL OR FINISHED GRADES AND SANDS SHOWN IN THE GRADES PLAN APPROVED FOR THIS TRACT BY THE SANITATION DISTRICTS AND SANDS SHOWN IN THE GRADES PLAN APPROVED FOR THIS TRACT BY THE SANITATION DISTRICTS AND SANDS SHOWN IN THE GRADES PLAN APPROVED FOR THIS TRACT BY THE SANITATION DISTRICTS AND SANDS SHOWN IN THE GRADES PLAN APPROVED FOR THIS TRACT BY THE SANITATION DISTRICTS. A MINIMUM OF 90% OF SAND EQUIVALENT PER A S.T.M. STANDARD METHOD OF TESTING SHALL BE OBTAINED TO THE ENVIRONMENTAL DEVELOPMENT DIVISION.

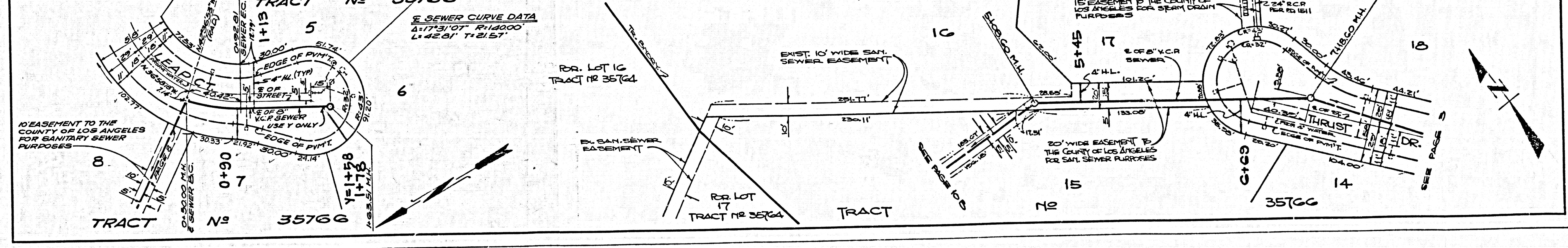
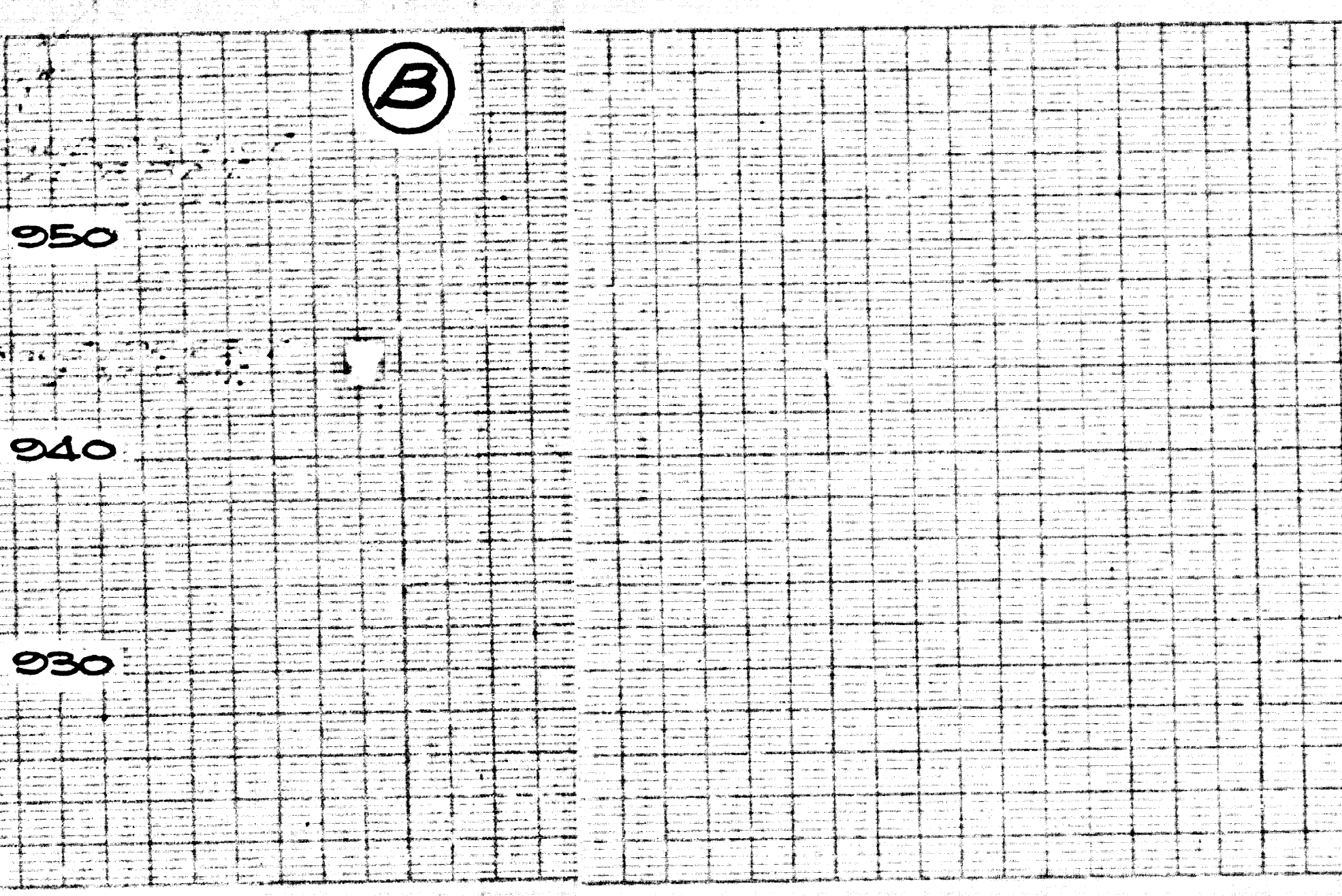
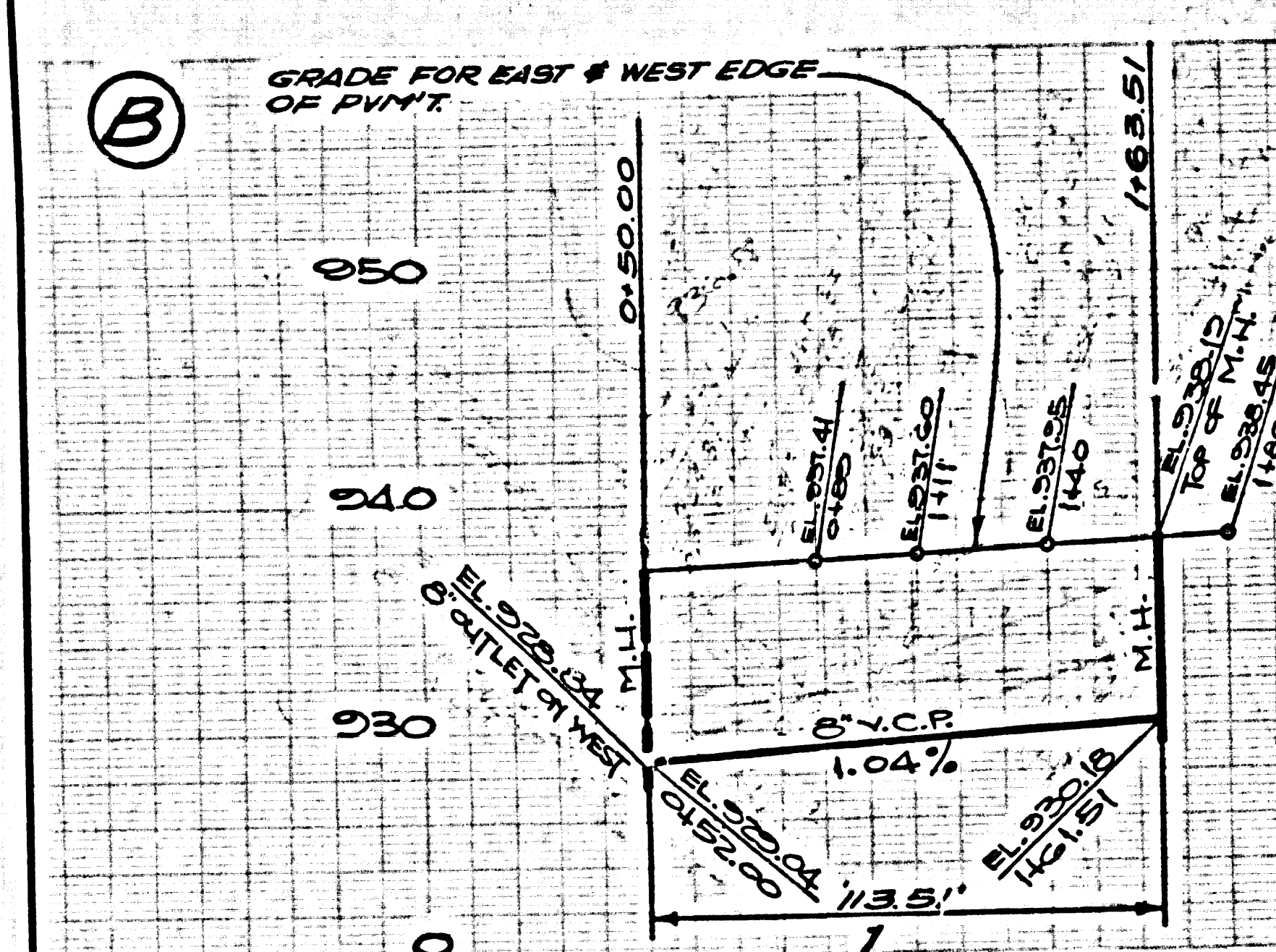
PROFILE, ALIGNMENT AND GRADE OF
SANITARY SEWERS PAGE 1
 TO BE CONSTRUCTED IN
TRACT NO. 35766
PRIVATE CONTRACT NO. 9654
 W.S. 39-44
 5 SHEETS, 10 PAGES
 52131

SCALE: HORIZ. 1"=60' VERT. 1"=8'
 DECEMBER 1979
 PREPARED IN THE OFFICES OF
POMAS & ASSOCIATES
 17910 BUCKINGHAM CIRCLE - IRVINE, CALIF.
 (714) 751-1573
 BY: *John P. Thomas*
 COUNTY ENGINEER REG. C.E. No. 22416

THE FOLLOWING LATEST REVISED STANDARD PLANS ON FILE IN THE OFFICE OF THE COUNTY ENGINEER SHALL APPLY IN THE CONSTRUCTION OF THIS PROJECT:

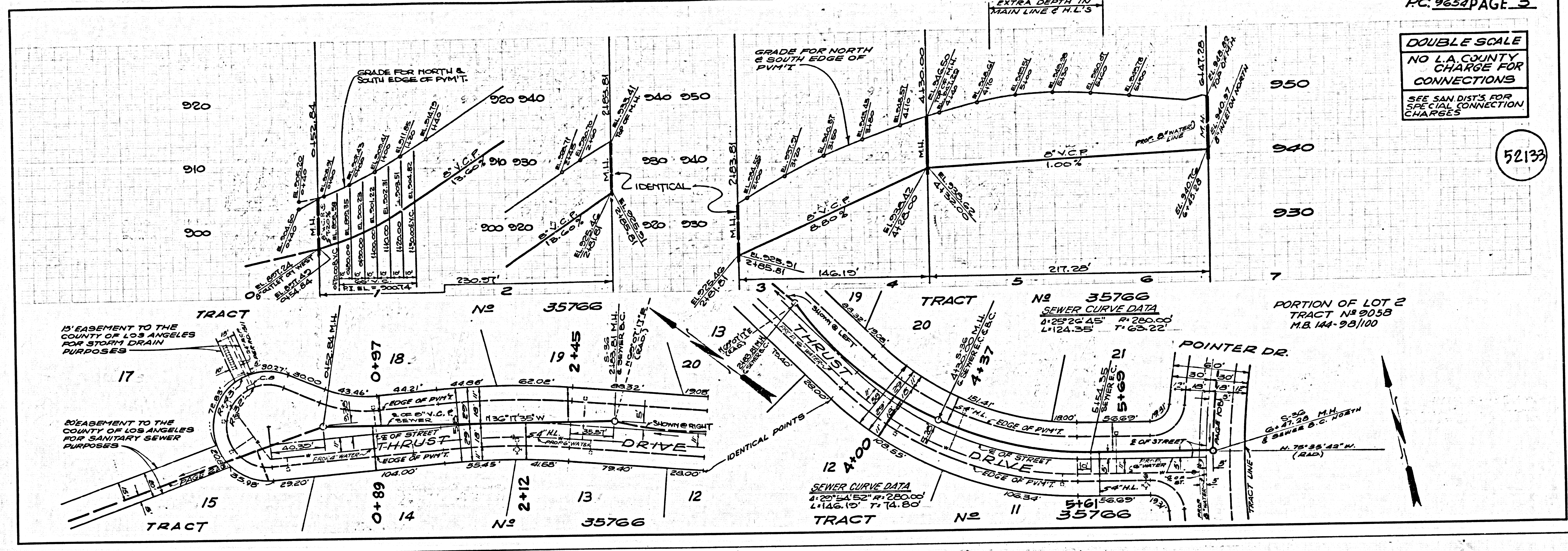
| | | |
|-------|--|------|
| 1020B | MINIMUM PUBLIC SAFETY REQUIREMENTS | 8-1 |
| 1020C | BRICK MANHOLES | 8-2 |
| 1020D | STANDARD MANHOLE SET | 8-3 |
| 1020E | BRIDGING FOR SEWER PIPES | 8-4 |
| 1020F | CRAWLING AND ENCASING | 8-5 |
| 1020G | WYE OR TE SUPPORT | 8-6 |
| 1020H | ALUMINUM TRENCH WIRE | 8-7 |
| 1020I | 1020H MANHOLE PLANS AND COVER | 8-8 |
| 1020J | NON-REINFORCED PRECAST CONCRETE MANHOLES | 8-9 |
| 1020K | ANCHOR BLOCK | 8-10 |
| 1020L | EROSION PROTECTION IN STEEP SLOPES | 8-11 |

COUNTY OF LOS ANGELES, CALIFORNIA
 STEPHEN J. KOONCE, COUNTY ENGINEER WALTER E. GARDNER, CHIEF ENGINEER
 CO. SAN. DIST. NO. 31
 APPROVED: *Sam H. Miller* 7/10/81
 COUNTY ENGINEER REGIONAL ENGINEER DATE
 CHECKED: *Dean E. Johnson* 7/10/81
 DATE
 REG. CE. NO. 25559
 LA PUENTE BLDG. DIST. 800

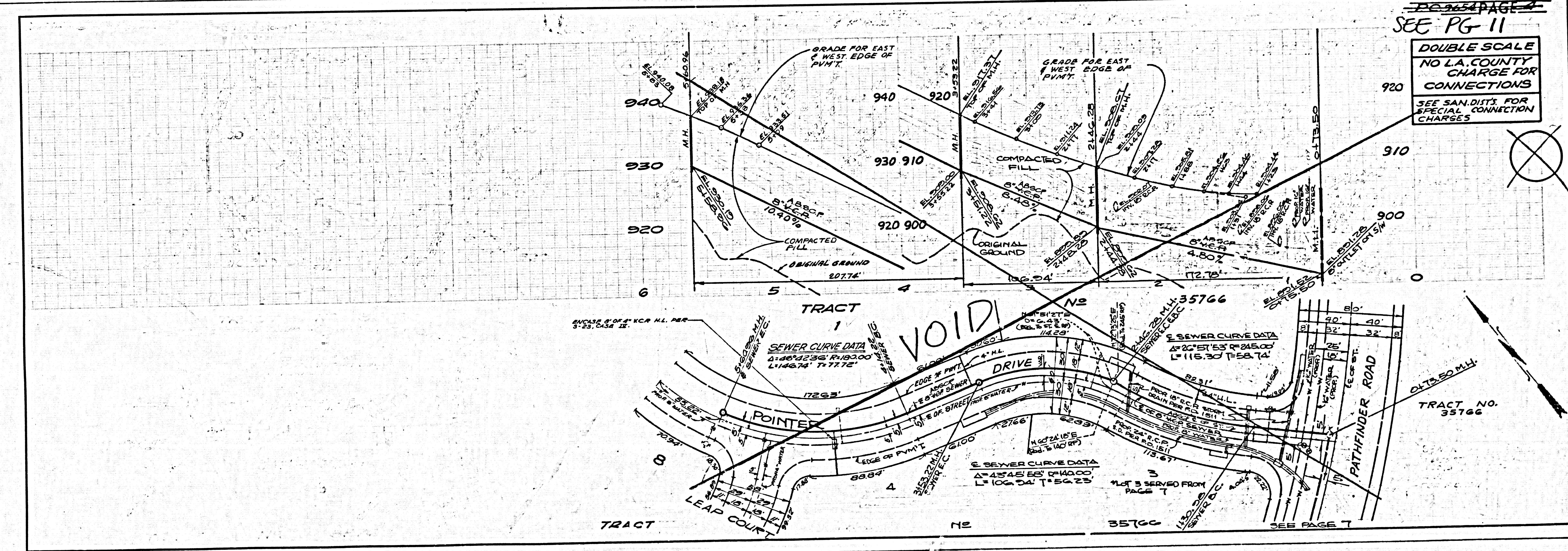


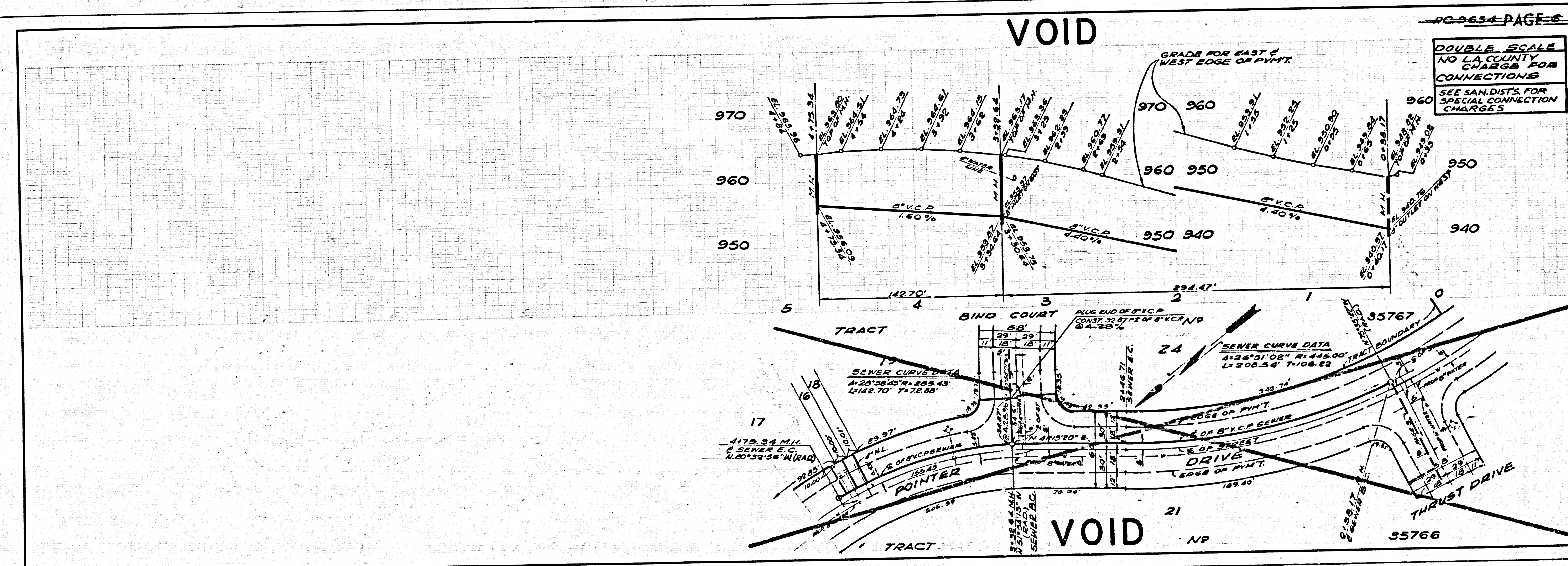
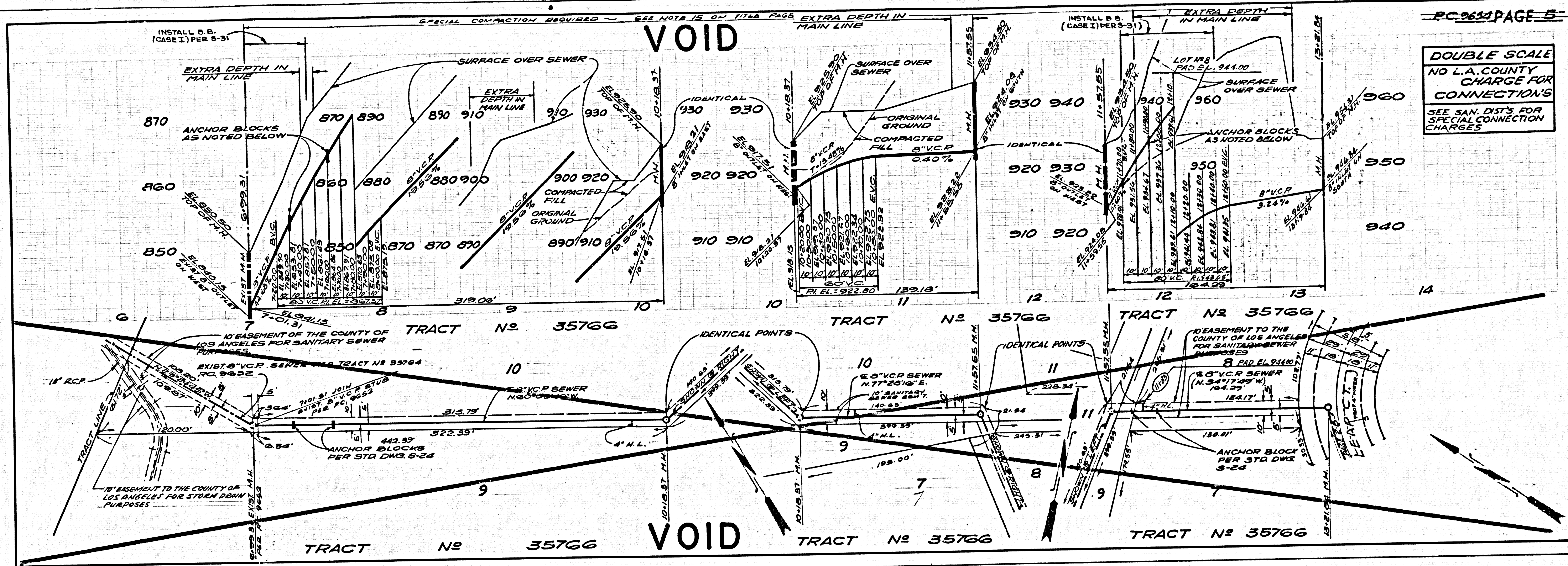
DOUBLE SCALE
NO L.A. COUNTY
CHARGE FOR
CONNECTIONS
SEE SAN DIST'S FOR
SPECIAL CONNECTION
CHARGES

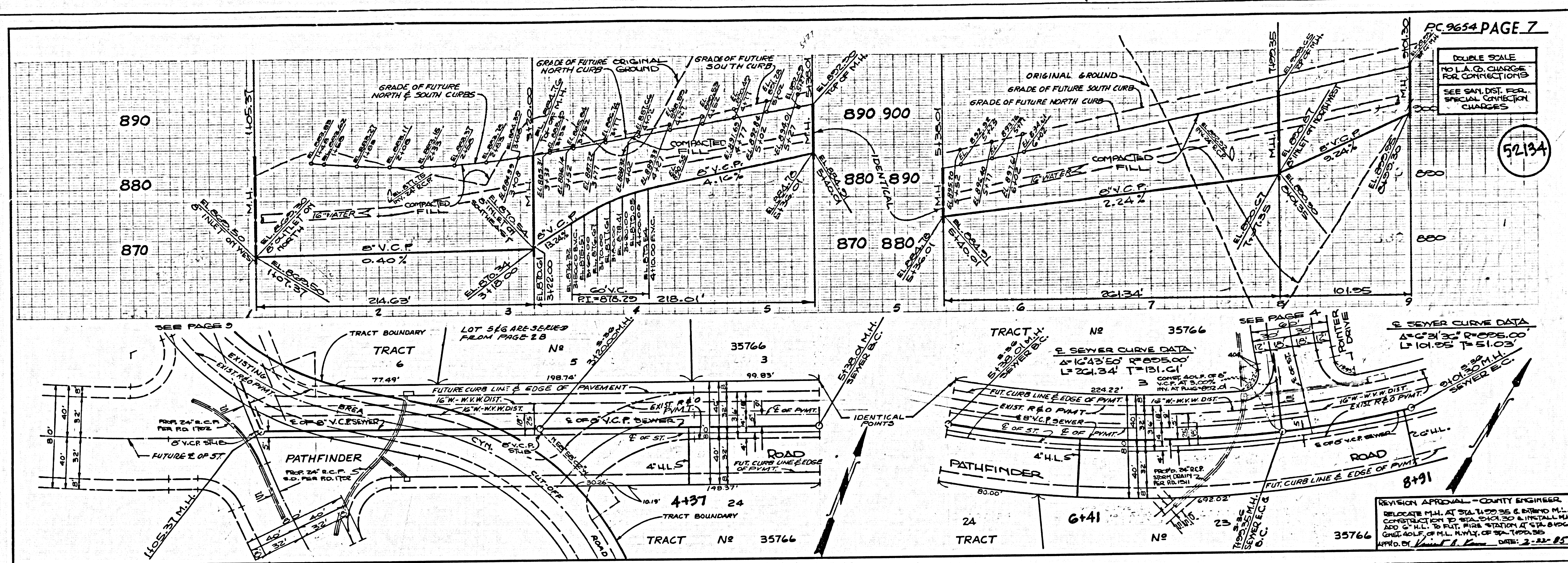
52133



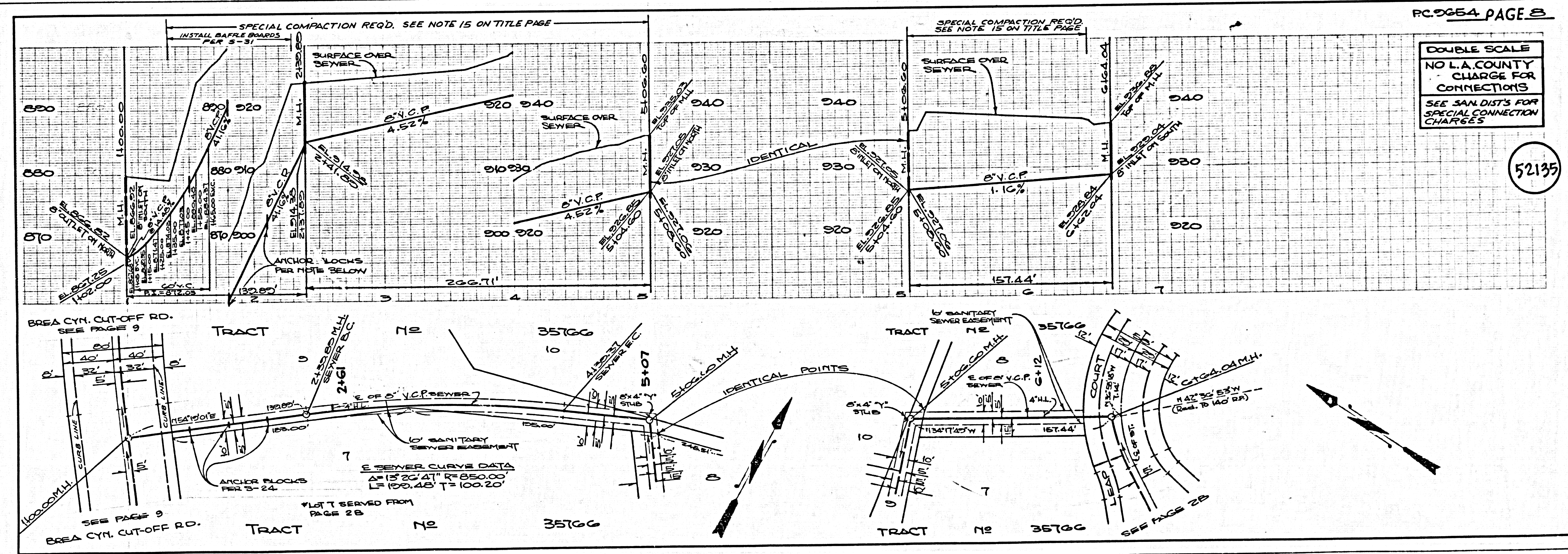
DOUBLE SCALE
NO L.A. COUNTY
CHARGE FOR
CONNECTIONS
SEE SAN DIST'S FOR
SPECIAL CONNECTION
CHARGES

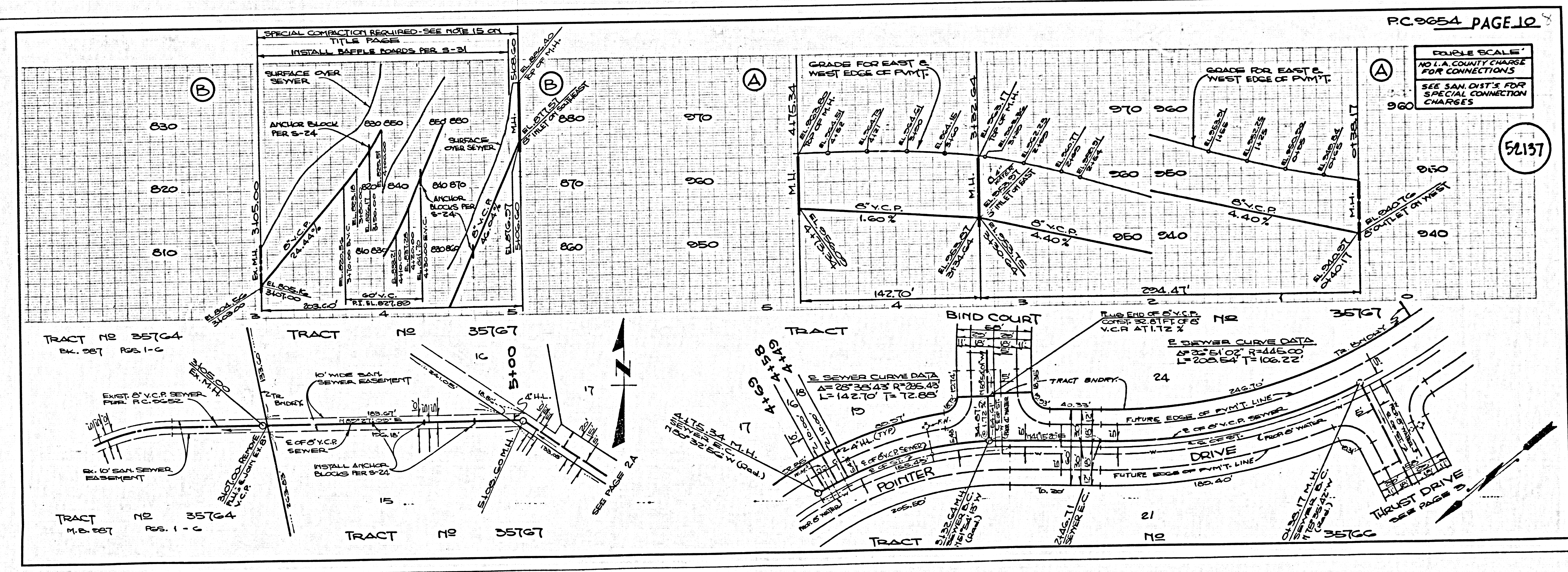
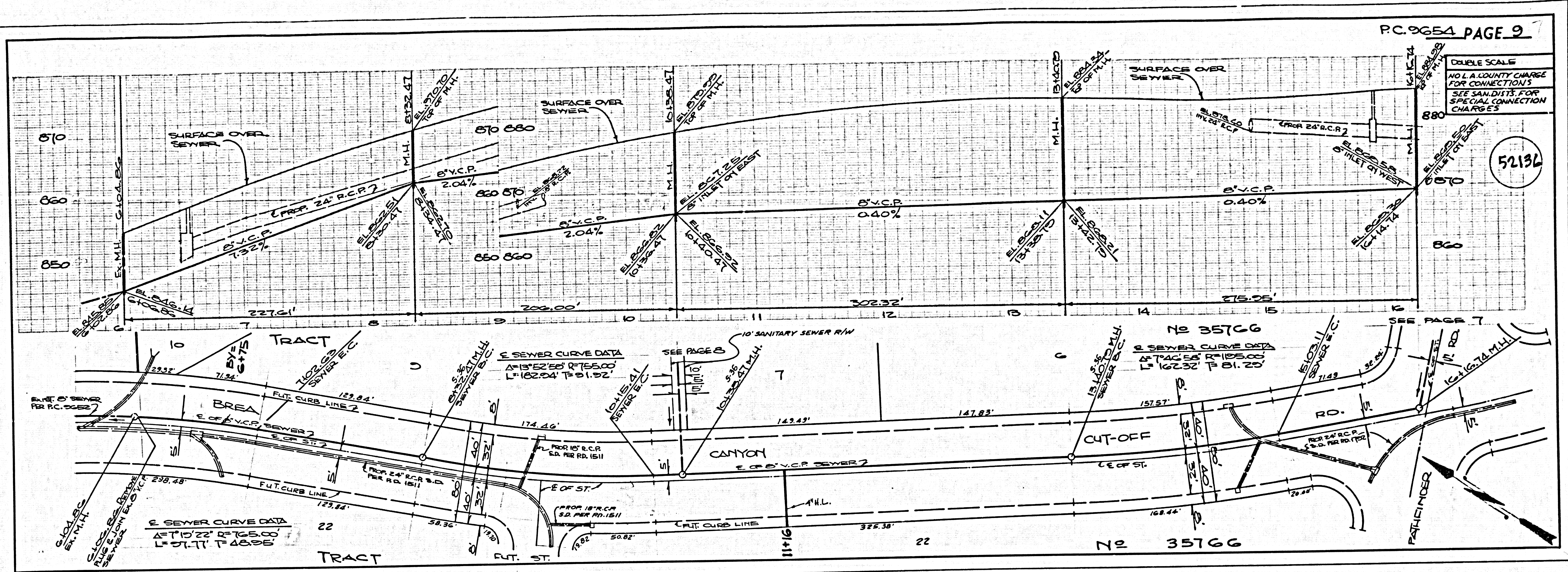






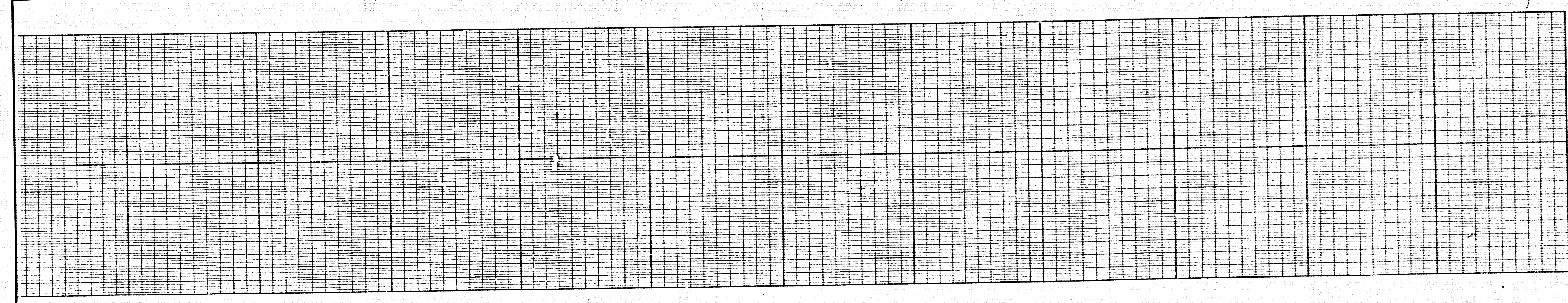
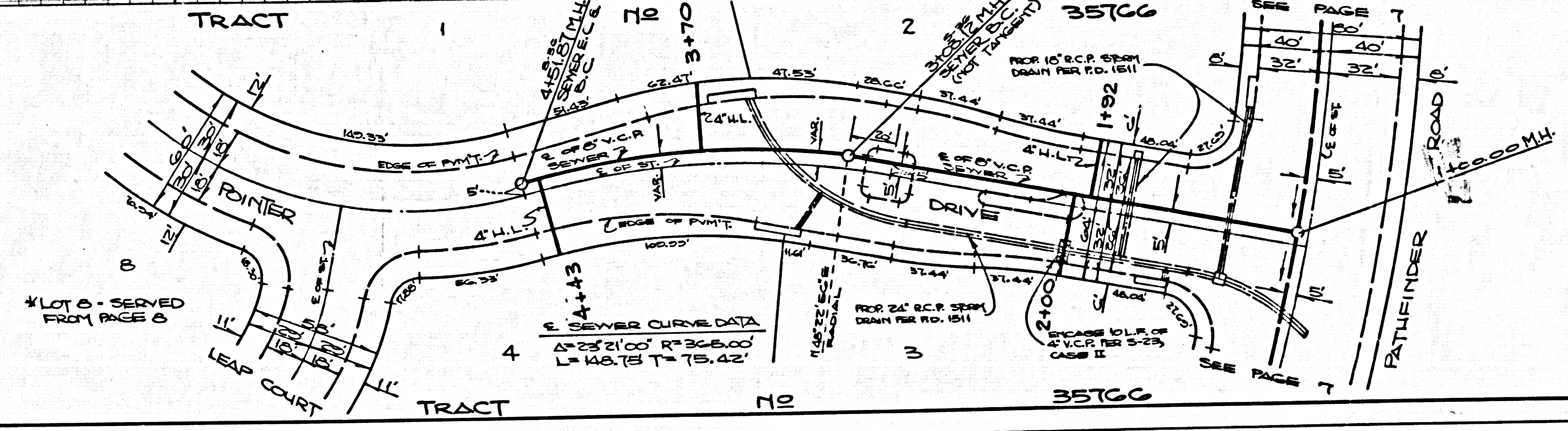
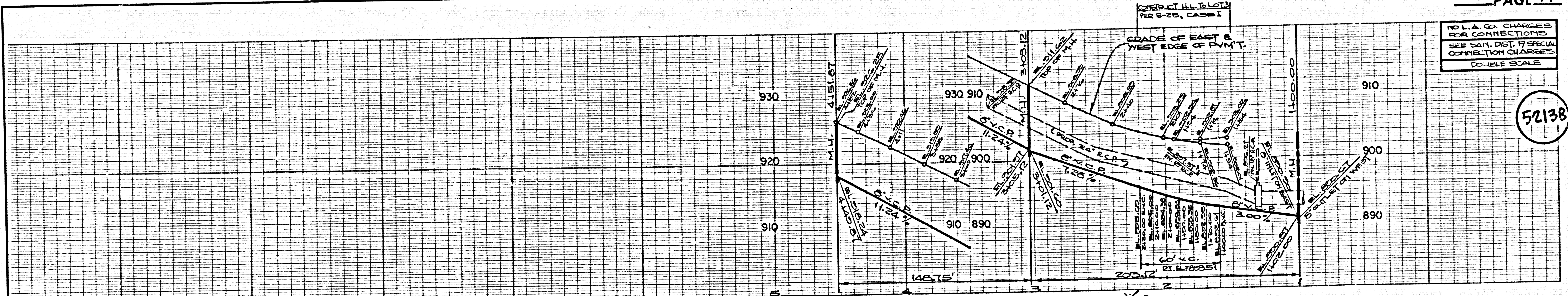
238 39
BATEMAN TRACT





NO L.A. CO. CHARGES FOR CONNECTIONS
SEE SAN. DIST. SPECIAL CONNECTION CHARGES
DOUBLE SCALE

52138



ASDC 09
SJR in TRACT

