

B.M. CG 1820 ELEV. 972.536
 87.5PK IN CONC. HOWL. 15 FT. N. 0/4 BREA
 CANYON CUTOFF RD. 0.05 MI. N. OF BREA
 CANYON RD. 350 FT. FROM SUMMIT (MND) (MND)
 OTTERBEIN QUAD. 19 23

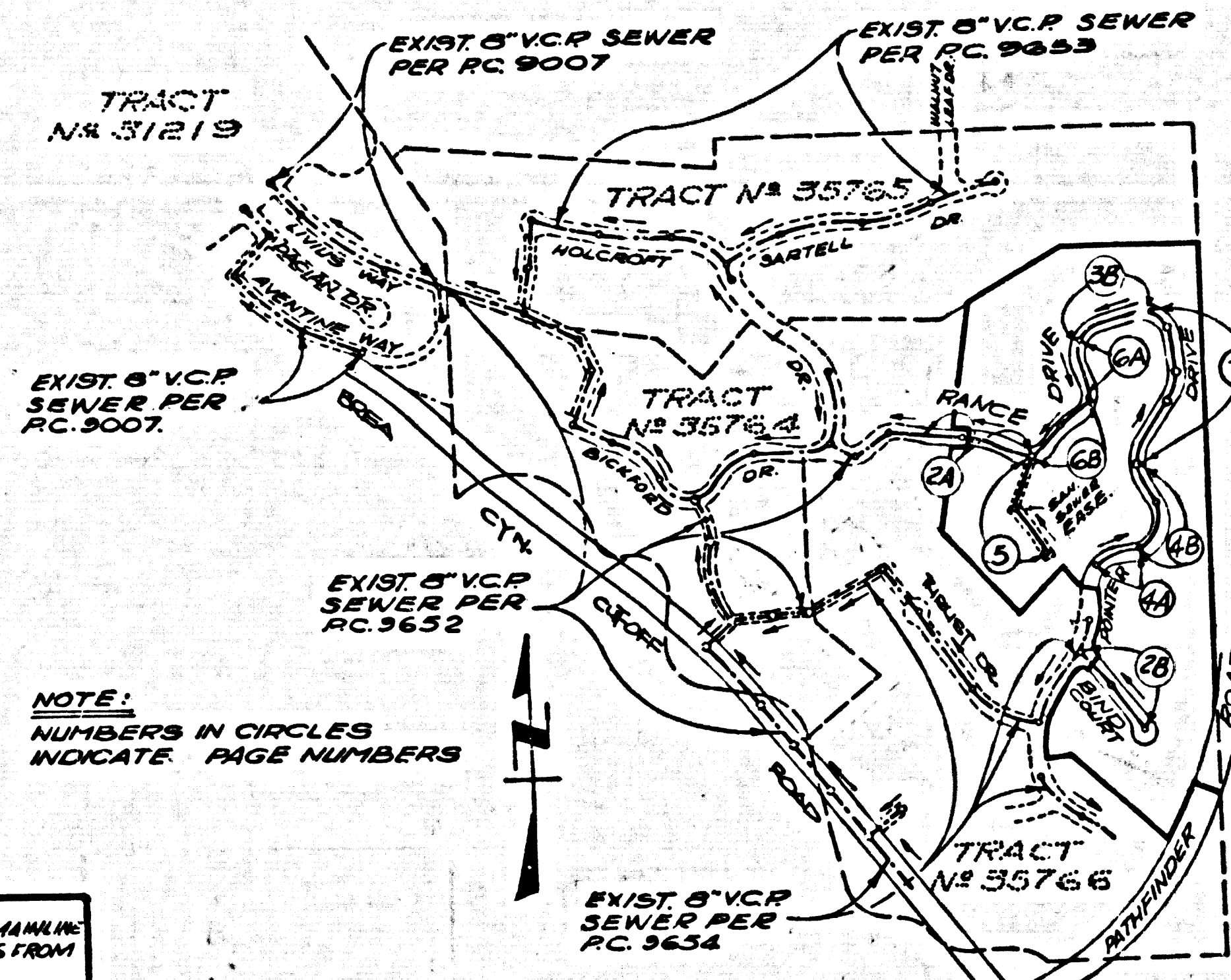
REVISION No. 2	
REV. 3	DELETE PAGE 3A & MODIFY PAGE 3D TO REFLECT ADJUSTMENT OF MAINLINE SEWER ON PAGE 1
REV. 4	MODIFY ALL INVERTS FROM STA. 295.00 TO 295.00 PAGES 4A & 4B PER ADJUSTMENT FROM PAGE 1
REV. 7	ADD PAGE 7 STA. 114.00 TO 234.00
REV. 20	REVISE VERTICAL GRADE DESIGN IN END CT. FROM STA. 045.00 TO 043.00

GENERAL NOTES: DOUBLE SCALE

- ELEVATIONS ARE IN FEET ABOVE U.S.C. & G.S. SEA LEVEL DATUM OF 1929.
- NO REVISIONS SHALL BE MADE IN THESE PLANS WITHOUT THE APPROVAL OF THE COUNTY ENGINEER.
- NO REPRESENTATIVE OF THE COUNTY ENGINEER WILL SURVEY OR LAY OUT ANY PORTION OF THE WORK.
- GRADES TO WHICH THE IMPROVEMENT IS TO BE CONSTRUCTED ARE SHOWN ON PLANS AND PROFILES. GAUGE POINTS FOR TOP OF CURBS, CENTER LINE OF STREETS, OR CENTER LINE OF LOTS ARE SHOWN BY CIRCLES ON PROFILES. AT ALL POINTS BETWEEN DESIGNATED GAUGE POINTS THE GRADE SHALL BE ESTABLISHED SO AS TO CONFORM TO A STRAIGHT LINE DRAWN BETWEEN SAID DESIGNATED POINTS.
- THE PRIVATE ENGINEER SHALL FURNISH THE COUNTY ENGINEER WITH GRADE SHEETS AND STATIONING FOR ALL HOUSE LATERALS AND "T" OR "T" BRANCHES AND SHALL PROVIDE STAKES FOR THEM AT THEIR PROPER LOCATIONS WITH STATIONING PLAINLY MARKED. ALL HOUSE LATERALS SHALL BE CONSTRUCTED IN A STRAIGHT ALIGNMENT AT RIGHT ANGLES FROM THE MAIN LINE SEWER EXCEPT AS SHOWN ON THE PLANS. HOUSE LATERALS FROM CHIMNEYS SHALL NOT HAVE AN ANGLE OF LESS THAN 45° WITH THE MAIN LINE SEWER. ANY CHANGE IN ALIGNMENT SHALL BE REQUESTED IN WRITING BY THE PRIVATE ENGINEER.
- THE PRIVATE ENGINEER SHALL FURNISH THE HOUSE LATERAL DEPTH AT THE PROPERTY LINE BELOW THE TOP OF CURB ELEVATION FOR EACH HOUSE LATERAL ON THE GRADE SHEET.
- BEFORE WORK CAN BE STARTED, THE CONTRACTOR MUST OBTAIN A PERMIT TO EXCAVATE IN COUNTY STREETS FROM THE L.A. COUNTY ROAD DEPT., DISTRICT OFFICE NO. 1 AND PAY A FEE TO THE COUNTY ENGINEER, 301 E. BONITA AVENUE, SAN DIMAS REGIONAL OFFICE TO COVER THE COST OF CONSTRUCTION INSPECTION AND RECORD PLANS.
- IF WORK IS TO BE DONE IN A STATE HIGHWAY, A PERMIT MUST BE OBTAINED FROM THE STATE OF CALIFORNIA, DIVISION OF HIGHWAYS, 730 SOUTH BRIDGE STREET, LOS ANGELES, CALIFORNIA.
- APPLICANTS OF THIS PLAN BY THE COUNTY OF LOS ANGELES DOES NOT CONSTITUTE A REPRESENTATION AS TO THE ACCURACY OF THE LOCATION OF OR 1.5" DISTANCE OR NON-EXISTENCE OF ANY UNDERGROUND UTILITY PIPE, OR STRUCTURE WITHIN THE LIMITS OF THIS PROJECT. THIS NOTE APPLIES TO ALL PAGES.
- REFER TO SECTION TABLES OF THE STANDARD SPECIFICATIONS, REGARDING SAFETY ORDERS.
- BEFORE THE ISSUANCE OF THE REQUIRED SEWER CONSTRUCTION PERMIT BY THE COUNTY ENGINEER, THE CONTRACTOR SHALL OBTAIN A PERMIT TO EXCAVATE FROM THE STATE OF CALIFORNIA'S DEPARTMENT OF INDUSTRIAL RELATIONS, REGIONAL DIVISION OF INDUSTRIAL SAFETY, AND SHALL FILE A CERTIFICATE OF WORKERS' COMPENSATION INSURANCE WITH THE COUNTY ENGINEER.
- (C) INDICATES ALL SHALL NOT BE BUILT. LAST STATION OF THIS STATION.

TRACT No 35767
 PRIVATE CONTRACT NO. 9655

W.S. 39-A, 4
 4 SHEETS, 7 PAGES
 52152
 SCALE: VERT. 1" = 8'
 HORIZ. 1" = 40'
 DECEMBER 1973
 PREPARED IN THE OFFICES OF
P. SOMAS & ASSOCIATES
 17910 BUCK PARK CIRCLE, IRVINE, CALIF. 92714
 (714) 751-7373
 REG. C. E. No. 22446



NOTE:
 LOT 8 IS SERVED BY EXISTING
 HOUSE LATERAL FROM PAGE 6,
 PC. 9662

NOTE:
 LOTS 16, 17 & 18 ARE SERVED
 BY EXISTING HOUSE LATERALS
 FROM PAGE 6, PC. 9654

NO CONNECTION FOR THE DISPOSAL OF INDUSTRIAL WASTES SHALL BE MADE TO SEWERS SHOWN ON THESE DRAWINGS UNTIL A PERMIT FOR INDUSTRIAL WASTEWATER DISCHARGE HAS BEEN OBTAINED FROM THE SANITATION DISTRICTS FOR SAID CONNECTION BY THE SANITATION DISTRICTS FOR SAID CONNECTION.

**ISSUE NO PERMITS UNTIL
 PC. 9652 & PC. 9654 ARE
 ACCEPTED**

INDEX MAP
 TRACT No 35767
 PC. 9655
 SCALE: 1" = 600'

PAGE 28	REVISED VERTICAL ALIGNMENT OF MAINLINE SEWER AND EDGE OF PAVEMENT GRADES FROM STA. 045.00 TO 043.56. 36' MOVED N.W. S.W. W.V. FROM STA. 041.58 TO STA. 043.56. 36'
PAGE 3A	REVISED VERTICAL ALIGNMENT OF MAINLINE SEWER AND SURFACE OVER SEWER GRADES FROM STA. 045.00 TO 043.56
PAGE 4A	REVISED VERTICAL ALIGNMENT OF MAINLINE SEWER AND EDGE OF PAVEMENT GRADES FROM STA. 043.81 TO 74.11. 54'

REVISION BY:
 LIND & MILLER, INC.
 JOHN N. SARRACINO R.C.E. 13233 DATE 1-20-63

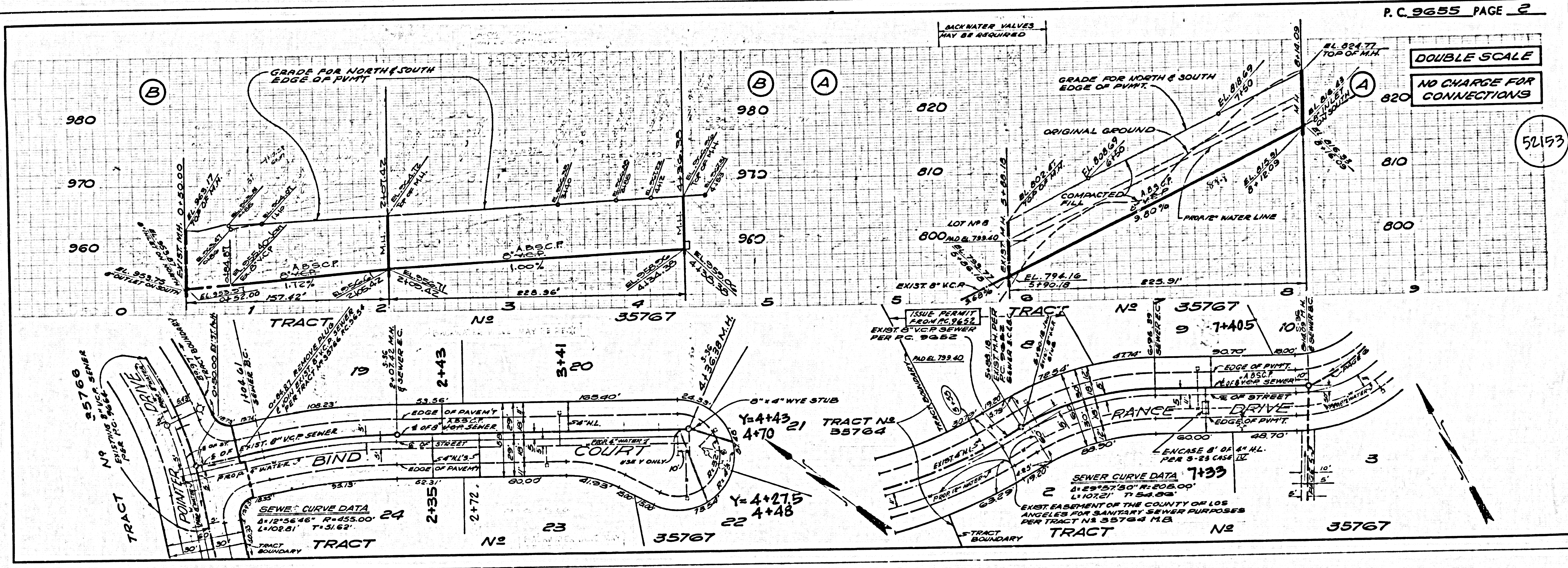
CONSTRUCTION NOTES:

- WORK SHALL BE CONSTRUCTED ACCORDING TO THE STANDARD SPECIFICATIONS FOR PUBLIC WORKS CONSTRUCTION (1973 EDITION WITH 1980 SUPPLEMENT) AND COUNTY ENGINEER SPECIAL PROVISIONS FOR THE CONSTRUCTION OF SANITARY SEWERS DATED SEPTEMBER 1972, AND SHALL BE PROCURED ONLY IN THE PRESENCE OF THE COUNTY ENGINEER.
- THE CONTRACTOR SHALL NOTIFY THE ENVIRONMENTAL DEVELOPMENT DIVISION BY TELEPHONE (213) 738-8100 AT LEAST TWENTY-FOUR HOURS BEFORE STARTING ANY WORK UNDER THIS CONTRACT.
- HOUSE LATERALS TO BE CONSTRUCTED WITH INVERTS AT PROPERTY LINE 4 FEET BELOW 8" P. GRADE EXCEPT AS NOTED.
- PIPE ON THE BRANCHES MAY BE USED FOR CONNECTIONS TO MAINLINE SEWERS EXCEPT AS NOTED.
- ALL STRUCTURES SHALL BE OTHER THAN MANHOLES PER 5-26, EXCEPT AS NOTED.
- PROVIDE STAKES ON THE PROPERTY LINE OR PROPERTY LINES PRODUCED AT RIGHT ANGLES TO THE SEWER LINE AT THE CENTER LINE OF EACH MANHOLE.
- MANHOLE TOPS IN UNIMPROVED RIGHTS OF WAY TO BE 8 INCHES ABOVE FINISHED GRADE.
- VERTICAL CURVE DATA SHALL BE 10' OR 15' PER STANDARD SPECIFICATIONS SECTION 206-2.
- IF A POWER POLE IS WITHIN THREE FEET OF THE SEWER, THE SEWER SHALL BE ENCASED PER 5-23, CASE II, TWO FEET ON EACH SIDE FROM THE POINT OF INTERFERENCE.
- IF DURING THE COURSE OF CONSTRUCTION IT IS DETERMINED THAT THERE IS LESS THAN FOUR FEET OF COVER OVER THE TOP OF A MAIN LINE OR HOUSE LATERAL T.C.P. SEWER WHICH IS NOT INDICATED ON THE PLANS, THE PIPE SHALL BE ENCASED PER 5-23, CASE II, UNLESS OTHERWISE APPROVED BY THE COUNTY ENGINEER.
- ALL JOINTS BETWEEN CAST IRON PIPE AND VITRIFIED CLAY PIPE SHALL BE MADE WITH A RUBBER SLEEVE JOINT, TYPE "C" OR "B", WITH A WARNING IF NECESSARY THE STANDARD SPECIFICATIONS AND SPECIAL PROVISIONS.
- SEWERS TO BE TESTED FOR LEAKAGE PER SECTION 206-1.6 OF THE STANDARD SPECIFICATIONS AND SPECIAL PROVISIONS.
- RESURFACE ALL TRENCHES WITHIN PAVED AREAS TO MEET L.A. COUNTY ROAD DEPT. OR CALIFORNIA STATE HIGHWAY REQUIREMENTS IN ACCORDANCE WITH PERMITS.
- PER COMPLIANCE WITH SECTION 206-18.6 OF THE SPECIAL PROVISIONS WILL BE REQUIRED FOR BACKFILL IN STREETS. CERTIFICATION OF BACKFILL COMPACTION AND SAND EQUIVALENTS BY A QUALIFIED, REGISTERED TESTING LABORATORY SHALL BE PROVIDED BY THE PERMITTEE PRIOR TO THE ISSUANCE OF A CERTIFICATE OF PARTIAL ACCEPTANCE.
- SPECIAL PROVISIONS IN DEVELOPMENT:**
 (A) BACKFILL FROM AND ABOVE FOUR FEET ABOVE FINISHED GRADE TO BE PLACED IN THE MANNER OF SAND EQUIVALENT AND SAND EQUIVALENT SHALL BE COMPACTED TO A MINIMUM OF 90% OF MAXIMUM DENSITY PER A.S.T.M. STANDARD AND SAND EQUIVALENT SHALL BE CERTIFIED THAT IT IS 90% OF MAXIMUM DENSITY BY TESTING AND SUBMITTING TO THE ENVIRONMENTAL DEVELOPMENT DIVISION.

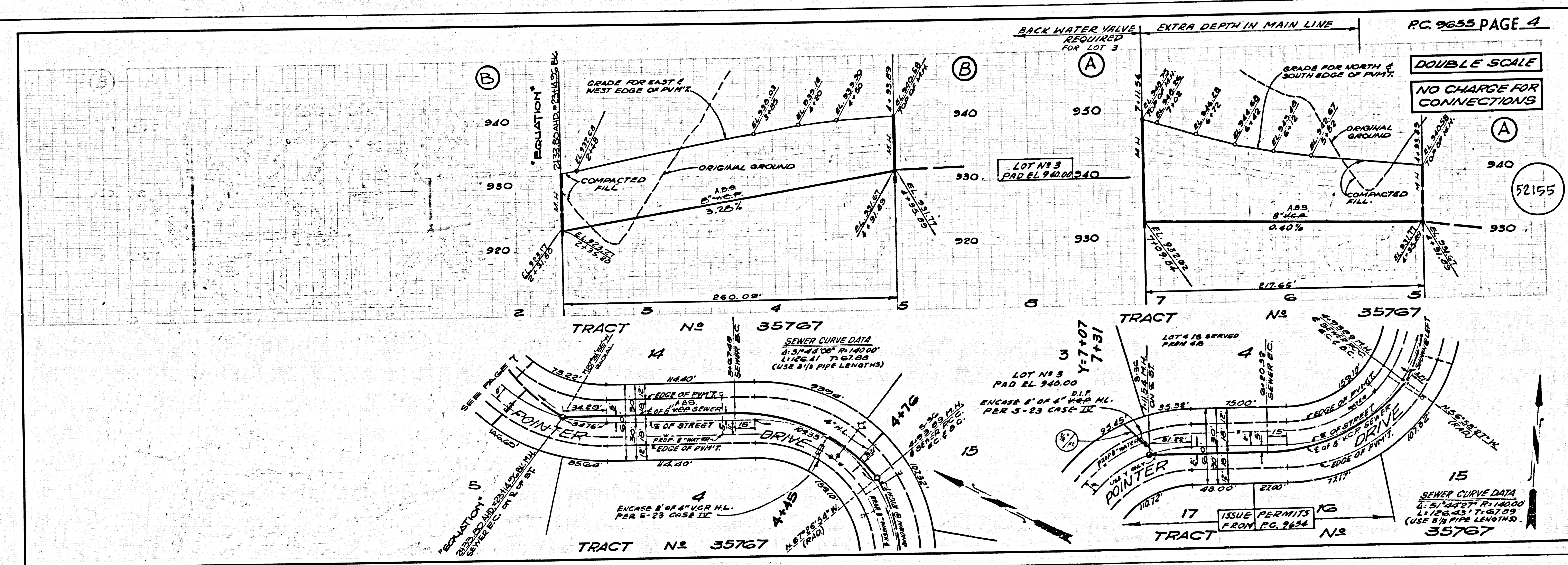
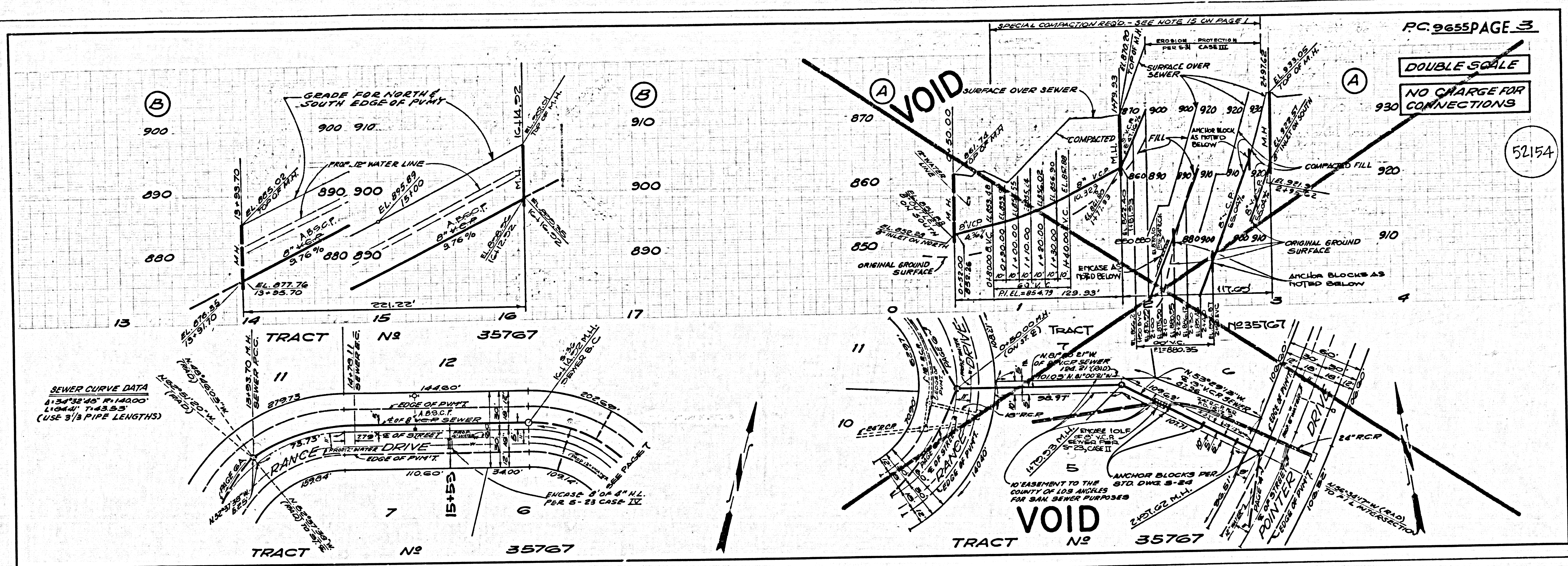
THE FOLLOWING LATEST REVISED STANDARD PLANS ON FILE IN THE OFFICE OF THE COUNTY ENGINEER SHALL APPLY IN THE CONSTRUCTION OF THIS PROJECT.

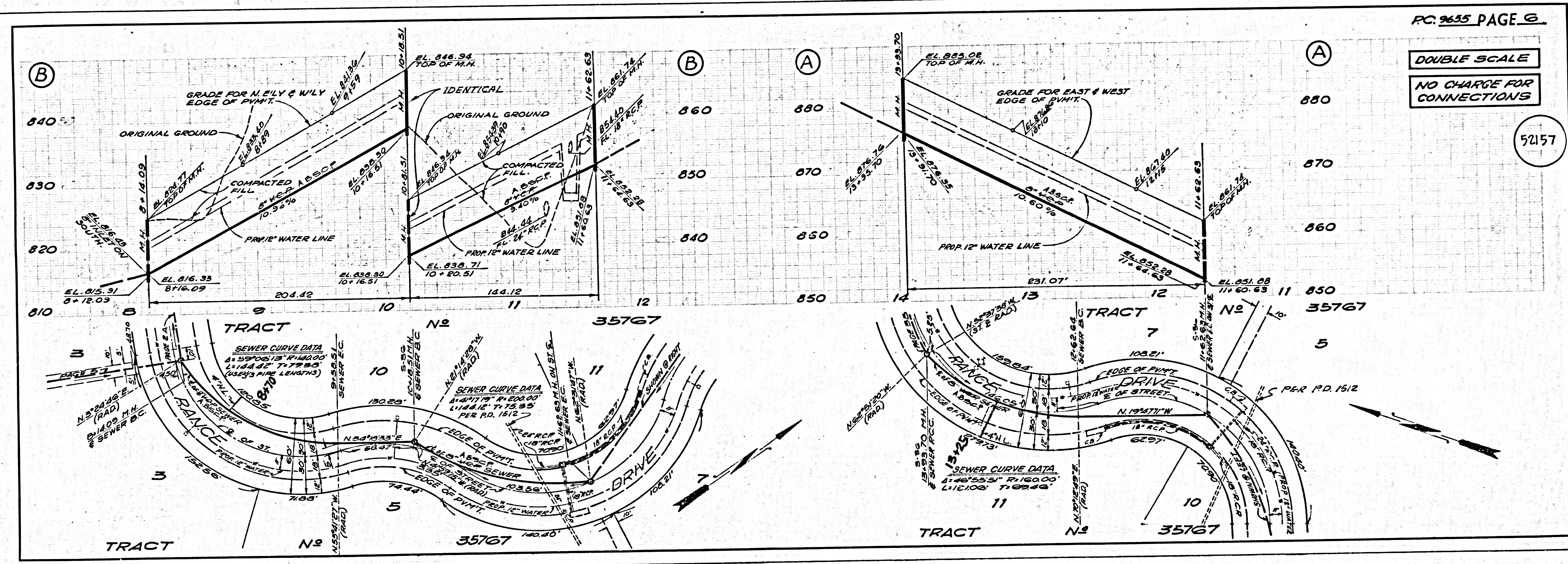
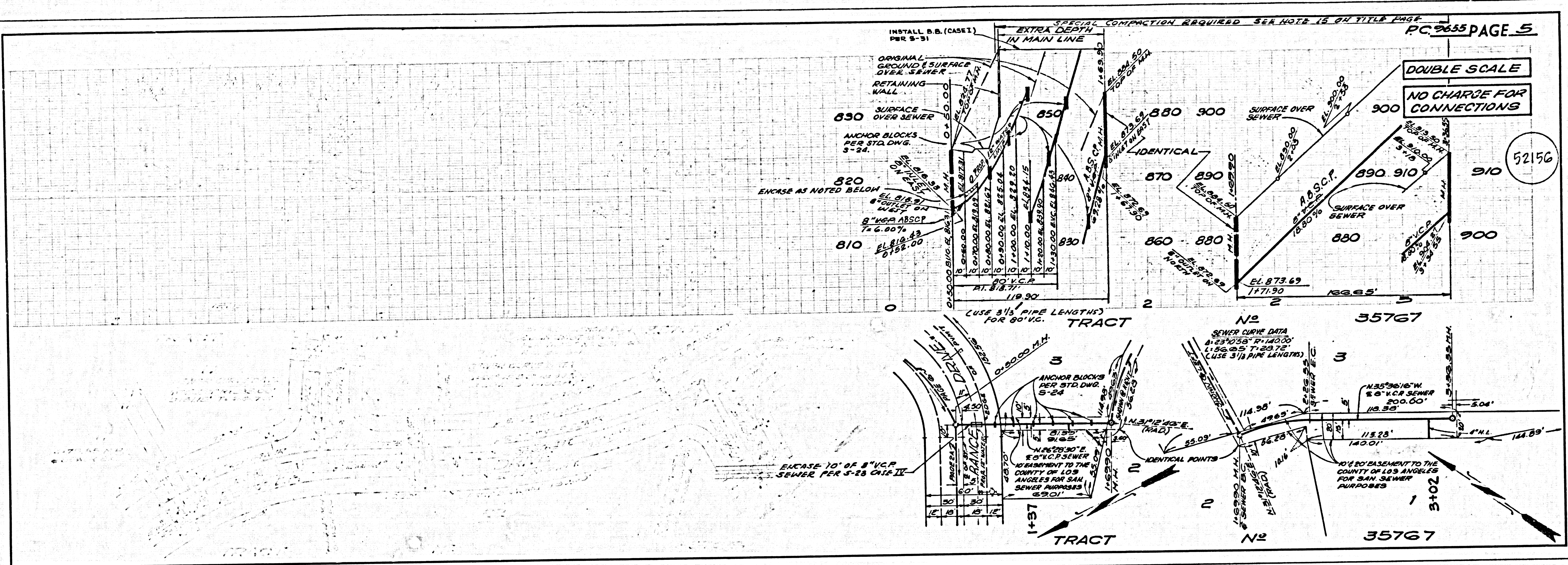
LEGEND	5-1
MINIMUM PUBLIC SAFETY REQUIREMENTS	5-2
BRICK MANHOLE	5-3
STANDARD MANHOLE STOP	5-4
BRICKWORK FOR SEWER PIPE	5-5
CLASING AND ENCASING	5-6
WYE ON THE SUPPORT	5-7
ALLOWABLE TRENCH WIDTHS	5-8
LOCKING MANHOLE FRAME AND COVER	5-9
NON-IMPINGINGLY PROTECT CONCRETE MANHOLE	5-10
ANCHOR BLOCK	5-11
SPECIAL SUPPORT AND PROTECTION	5-12
EROSION PROTECTION FOR 2 FEET SLOPES	5-13

COUNTY OF LOS ANGELES, CALIFORNIA
 STEPHEN J. KOONCE, COUNTY ENGINEER WALTER S. GARRISON, CHIEF ENGINEER
 CO. SAN DIST. NO. 31
 APPROVED: *John Miller 1/10/74* APPROVED: *Don J. Fuller 1/10/74*
 JOHN MILLER REGIONAL ENGINEER DON J. FULLER OFFICE ENGINEER
 CHECKED: *Dery Efstathiou 1/10/74*
 REG. C. E. NO. 25559
 J.A. PUENTE BLDG. DIST. 200



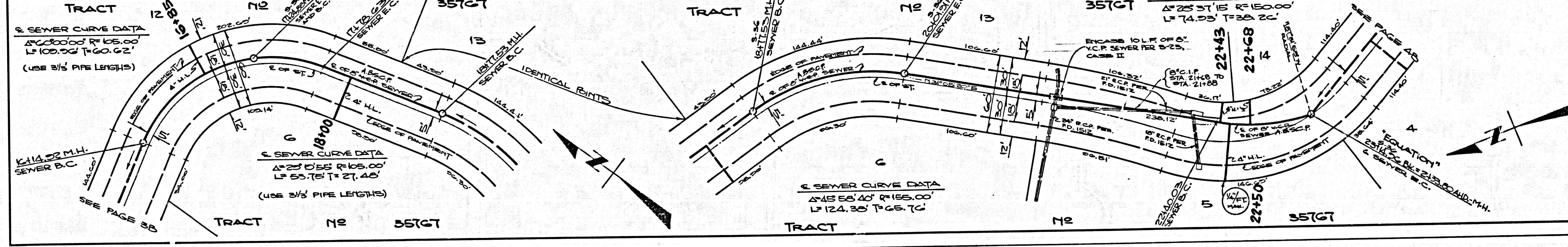
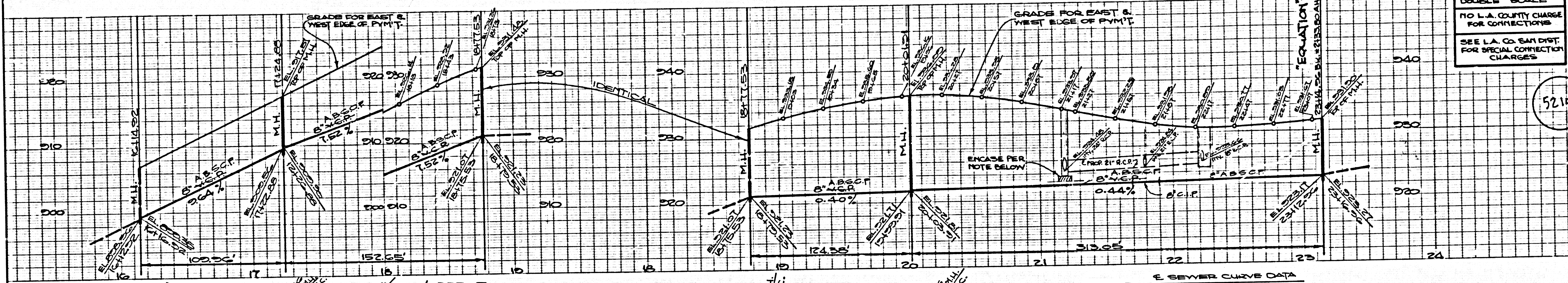
DOUBLE SCALE
NO CHARGE FOR CONNECTIONS
 52153





DOUBLE SCALE
NO L.A. COUNTY CHARGE
FOR CONNECTIONS
SEE L.A. CO. SAN DIST.
FOR SPECIAL CONNECTION
CHARGES

52158



TRACT 14 32161
BC 5655

