

TO BE CONSTRUCTED IN
TRACT NO. 33403
PRIVATE CONTRACT NO. 9657

W.S. 90
 5 SHEETS, 12 PAGES
 SCALE: VERT. 1" = 4' HORIZ. 1" = 40'
 APRIL, 1979
 PREPARED IN THE OFFICES OF
 ADVANCED DESIGN ASSOCIATES
 2625 TOWNGATE RD. SUITE 100 THOUSAND OAKS, CALIF. 91361
 BY: *Walter K. K... 10184*
 REG. C. E. No. 10184

48181

B.M. BY 9211 ELEV. 951.576
 ROOM 1716 IN B. 120 C.S. 41 FT
 AND C.S. 41 AND ED. 0.95 MI. N.W.
 THOUSAND OAKS BLVD. 0.15 MI. S.W.
 LOS ANGELES COUNTY - WOODHURST COUNTY LINE.
 MAR. 1971 QUAD. 19 22

NOTE: TRENCHING REQUIREMENTS
 TRENCH TO BE IN ACCORDANCE WITH LOS ANGELES COUNTY SPECIFICATIONS. ENCASEMENT TO BE WITH SAND FOR THE FIRST TWO FEET ABOVE CURB. WOODS COMPACTED TO 90% RELATIVE COMPACTION OF TRENCH TO BE BACKFILLED TO FINISHED SURFACE WITH ANYTHING MATERIAL AND COMPACTED TO 90% RELATIVE COMPACTION WITH MECHANICAL TAMPING.

REVISION NO. 1
 DATE: JUNE 9, 1980
 REASON: Revised layout of manholes and pipe sizes.
 DUE TO REVISIONS: Revised layout of manholes and pipe sizes. Due to Revisions: Revised layout of manholes and pipe sizes. Due to Revisions: Revised layout of manholes and pipe sizes.
 APPROVED: *Dean G. ...*
 OFFICE OF COUNTY ENGINEER, P.C.E. 19557

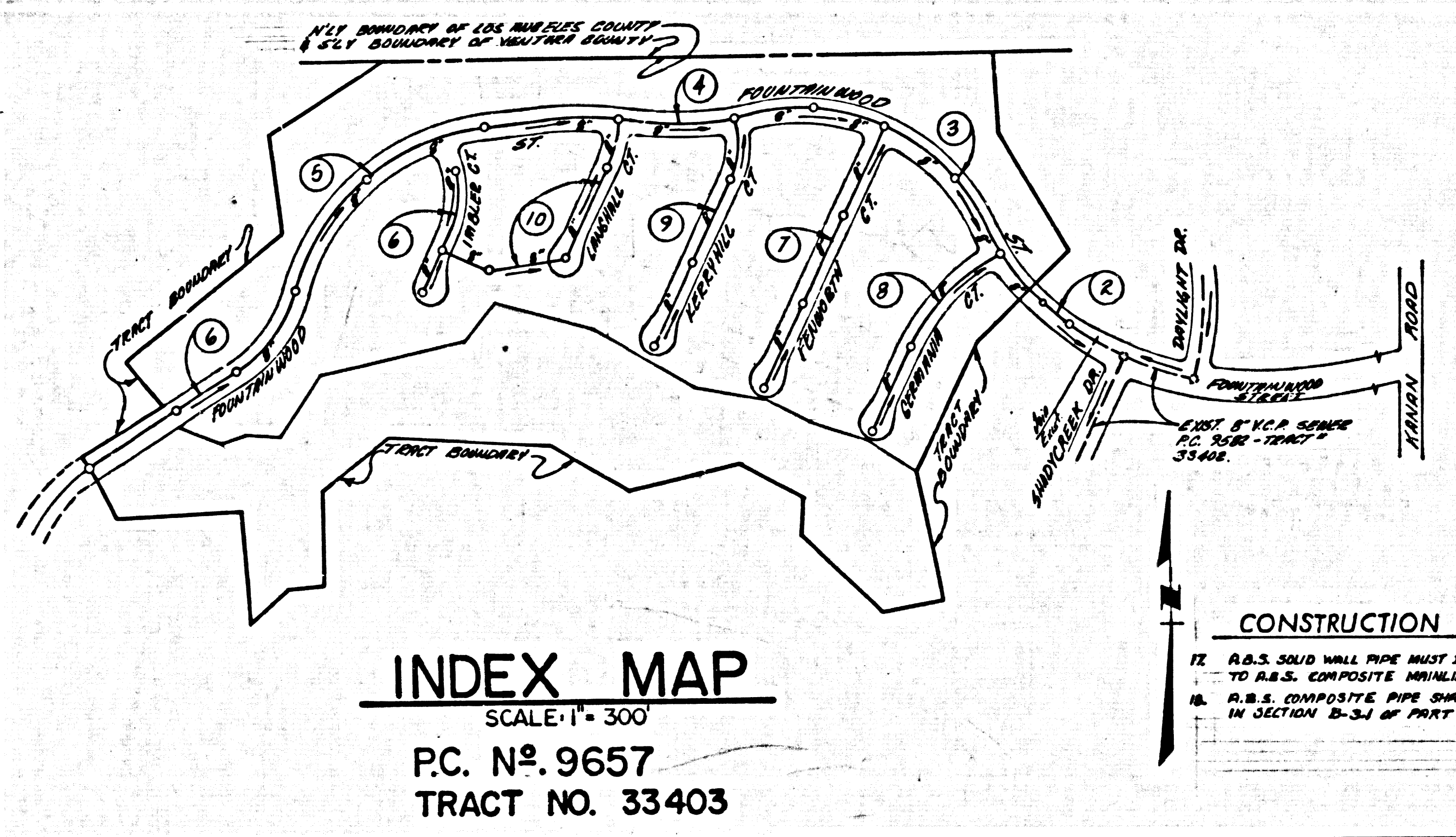
- GENERAL NOTES:**
- ELEVATIONS ARE IN FEET ABOVE U.S.C. & G.S. SEA LEVEL DATUM OF 1929.
 - NO REVISIONS SHALL BE MADE IN THESE PLANS WITHOUT THE APPROVAL OF THE COUNTY ENGINEER.
 - NO REPRESENTATIVE OF THE COUNTY ENGINEER WILL SURVEY OR LAY OUT ANY PORTION OF THE WORK.
 - GRADES TO WHICH THIS IMPROVEMENT IS TO BE CONSTRUCTED ARE SHOWN ON PLANS AND HOUSE GRADE POINTS FOR TOP OF CURB. CENTER LINE OF STREET, OR CENTER LINE OF ALLEYS ARE SHOWN BY CIRCLES ON PROFILES. AT ALL POINTS BETWEEN DESIGNATED POINTS THE GRADE SHALL BE ESTABLISHED SO AS TO CONFORM TO A STRAIGHT LINE DRAWN BETWEEN SAID DESIGNATED POINTS.
 - THE PRIVATE ENGINEER SHALL FURNISH THE COUNTY ENGINEER WITH GRADE SHEETS AND STATIONING FOR ALL HOUSE LATERALS AND "Y" OR "T" BRANCHES AND SHALL PROVIDE STAKES FOR THEM AT THEIR PROPER LOCATIONS WITH STATIONING PLAINLY MARKED. ALL HOUSE LATERALS SHALL BE CONSTRUCTED IN A STRAIGHT ALIGNMENT AT RIGHT ANGLES FROM THE MAIN LINE SEWER EXCEPT AS SHOWN ON THE PLANS. HOUSE LATERALS FROM CHIMNEYS SHALL NOT HAVE AN ANGLE OF LESS THAN 45° WITH THE MAIN LINE SEWER. ANY CHANGE IN ALIGNMENT SHALL BE REQUESTED IN WRITING BY THE PRIVATE ENGINEER.
 - THE PRIVATE ENGINEER SHALL FURNISH THE HOUSE LATERAL BENCH AT THE PROPERTY LINE BELOW THE TOP OF CURB ELEVATION FOR EACH HOUSE LATERAL ON THE GRADE SHEET.
 - BEFORE WORK CAN BE STARTED, THE CONTRACTOR MUST OBTAIN A PERMIT TO EXCAVATE IN COUNTY STREETS FROM THE L.A. COUNTY ROAD DEPT., DISTRICT OFFICE NO. 3, AND A FEE TO THE COUNTY ENGINEER, 500 S. BROADWAY, LOS ANGELES, CALIF. 90010 TO COVER THE COST OF CONSTRUCTION INSPECTION AND RECORD PLANS.
 - IF WORK IS TO BE DONE IN A STATE HIGHWAY, A PERMIT MUST BE OBTAINED FROM THE STATE OF CALIFORNIA, DIVISION OF HIGHWAYS, 126 SOUTH BRAND STREET, LOS ANGELES, CALIFORNIA.
 - APPROVAL OF THIS PLAN BY THE COUNTY OF LOS ANGELES DOES NOT CONSTITUTE A REPRESENTATION AS TO THE ACCURACY OF THE LOCATION OR THE EXISTENCE OR NON-EXISTENCE OF ANY UNDERGROUND UTILITY PIPE, OR STRUCTURE WITHIN THE LIMITS OF THIS PROJECT. THIS NOTE APPLIES TO ALL PAGES.
 - REFER TO SECTION 7-14.1.1 OF THE STANDARD SPECIFICATIONS, REGARDING SAFETY OBSTACLES.
 - PERMITS TO THE PRESENCE OF THE REMOVED RANGE CONSTRUCTION PERMITS THE CONTRACTOR SHALL OBTAIN FROM THE COUNTY ENGINEER AS A RESULT OF SECTION 7-14.1.1 OF THE STANDARD SPECIFICATIONS. THE COUNTY ENGINEER'S OFFICE IS LOCATED AT 500 S. BROADWAY, LOS ANGELES, CALIFORNIA. THE CONTRACTOR SHALL OBTAIN A PERMIT TO EXCAVATE IN COUNTY STREETS FROM THE L.A. COUNTY ROAD DEPT., DISTRICT OFFICE NO. 3, AND A FEE TO THE COUNTY ENGINEER, 500 S. BROADWAY, LOS ANGELES, CALIFORNIA. THIS NOTE APPLIES TO ALL PAGES.

THE FOLLOWING LATEST REVISED STANDARD PLANS ON FILE IN THE OFFICE OF THE COUNTY ENGINEER SHALL APPLY IN THE CONSTRUCTION OF THIS PROJECT.

LOCALS	5-1
MINIMUM PUBLIC SAFETY REQUIREMENTS	5-2
BACK MANHOLES	5-3
STANDARD MANHOLE STEP	5-17
BERMING FOR SEWER PIPE	5-20
CRACKING AND REPAIRS	5-20
WTF OR THE SUPPORT	5-20
ALLOWABLE TRENCH WIDTHS	5-20
LOADING MANHOLE FRAMES AND COVERS	5-20
NON-SUPPORTING PRECAST CONCRETE MANHOLES	5-20
PRECAST CONCRETE MANHOLE MANHOLES	5-20
REINFORCED CONCRETE MANHOLE MANHOLES	5-20

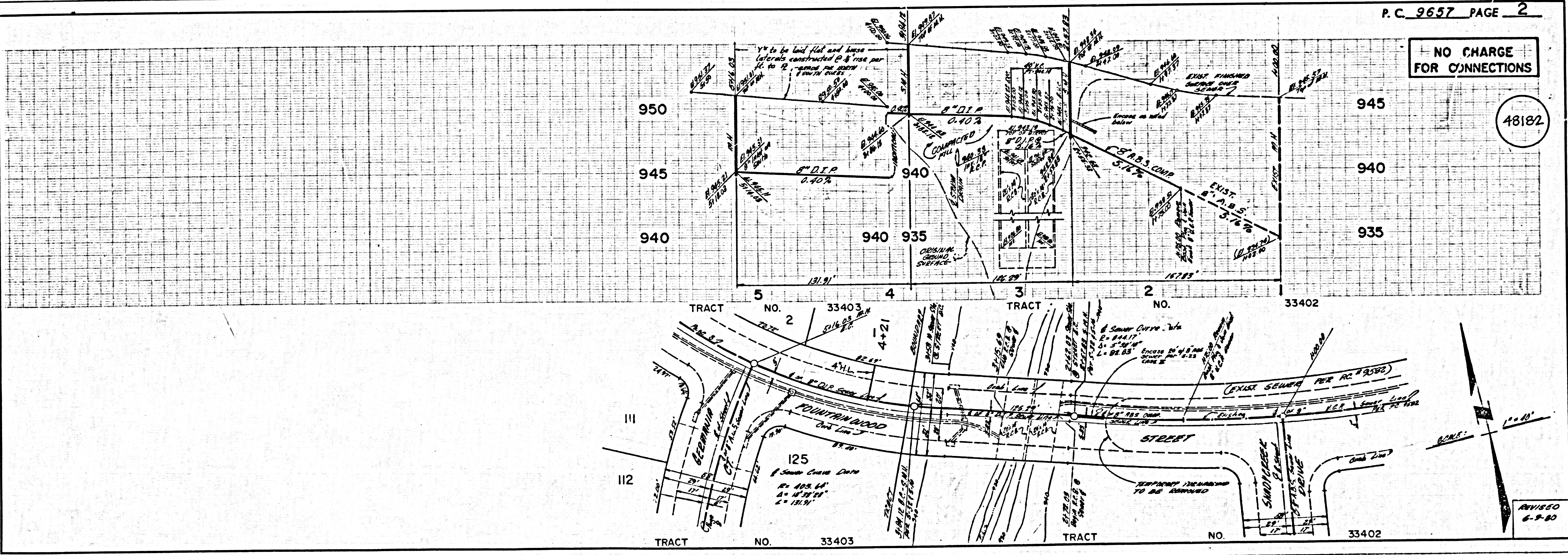
- CONSTRUCTION NOTES:**
- WORK SHALL BE CONSTRUCTED ACCORDING TO THE STANDARD SPECIFICATIONS FOR PUBLIC WORKS CONSTRUCTION 1978 EDITION WITH 1978 SUPPLEMENTS AND COUNTY ENGINEER SPECIAL PROVISIONS FOR THE CONSTRUCTION OF SANITARY SEWERS DATED 1978. THE CONTRACTOR SHALL NOTIFY THE DISTRICT DIVISION BY TELEPHONE, 909-7282, AT LEAST TWENTY-FOUR HOURS BEFORE STARTING ANY WORK UNDER THIS CONTRACT.
 - HOUSE LATERALS TO BE CONSTRUCTED WITH INVERTS AT PROPERTY LINE 6 FEET BELOW CURB GRADE EXCEPT AS NOTED.
 - WYE OR T BRANCHES MAY BE USED FOR CONNECTIONS TO MAINLINE SEWERS EXCEPT AS NOTED.
 - ALL STRUCTURES SHALL BE BUILT WITH MANHOLES PER 5.3 OR PRECAST CONCRETE MANHOLES PER 5.20, EXCEPT AS NOTED.
 - PROVIDE STAKES ON THE PROPERTY LINE OR PROPERTY LINES PRODUCED AT RIGHT ANGLES TO THE SEWER LINE AT THE CENTER LINE OF EACH MANHOLE.
 - MANHOLE TOPS IN UNIMPROVED RIGHTS OF WAY TO BE SIX INCHES ABOVE FINISHED GRADE.
 - VERTICAL CLAY PIPE JOINTS SHALL BE TYPE "C", "F", OR "H" PER STANDARD SPECIFICATIONS SECTION 308-2.
 - IF A POWER POLE IS WITHIN THREE FEET OF THE SEWER, THE SEWER SHALL BE ENCASED, PER 5.23, CASE II, TWO FEET ON EACH SIDE FROM THE POINT OF INTERFERENCE.
 - IF DURING THE COURSE OF CONSTRUCTION IT IS DETERMINED THAT THERE IS LESS THAN FOUR FEET OF COVER OVER THE TOP OF A MAIN LINE OR HOUSE LATERAL "Y" OR "T" SEWER WHICH IS NOT INDICATED ON THE PLANS, THE PIPE SHALL BE ENCASED PER 5.23, CASE II UNLESS OTHERWISE APPROVED BY THE COUNTY ENGINEER.
 - ALL JOINTS BETWEEN CAST IRON PIPE AND VITRIFIED CLAY PIPE SHALL BE MADE WITH A RUBBER GASKET JOINT, TYPE "C" OR "F", WITH GASKETS IF NECESSARY PER STANDARD SPECIFICATIONS SECTION 308-2.
 - SEWERS TO BE TESTED FOR LEAKAGE PER SECTION 308-4 OF THE STANDARD SPECIFICATIONS AND SPECIAL PROVISIONS.
 - RESURFACE ALL TRENCHES WITHIN LAWS AREAS TO MEET L.A. COUNTY ROAD DEPT. OR CALIFORNIA STATE HIGHWAY REQUIREMENTS IN ACCORDANCE WITH PERMITS.
 - FULL COMPLIANCE WITH SECTION 308-1.4 OF THE STANDARD SPECIFICATIONS WILL BE REQUIRED FOR BACKFILL IN STREETS. CERTIFICATION OF BACKFILL COMPACTION AND SAND EQUIVALENTS BY A QUALIFIED, REGISTERED TESTING LABORATORY SHALL BE PROVIDED BY THE PERMITTEE PRIOR TO THE ISSUANCE OF A CERTIFICATE OF PARTIAL ACCEPTANCE.
 - FULL COMPLIANCE WITH PART II OF THE SPECIAL PROVISIONS IS REQUIRED FOR THE INSTALLATION OF A.B.S. COMPOSITE PIPE.
 - MANHOLE WATER STOP BASKETS & CLAMPS ARE REQUIRED FOR THE CONNECTION OF A.B.S. COMPOSITE PIPE TO MANHOLE STRUCTURES.

COUNTY OF LOS ANGELES, CALIFORNIA
 STEPHEN J. KOONCE, COUNTY ENGINEER LAS VIRGENES MUNICIPAL WATER DISTRICT
 APPROVED: *John W. K... 1-12-79*
 ASST. COUNTY ENGINEER DATE: *10/19/79*
 APPROVED: *...*
 CHECKED: *...* 7/12/79
 DATE: *...*
 REG. C. E. NO. 10653
 CALIFORNIA BLDG. DIST. 21 I.N.



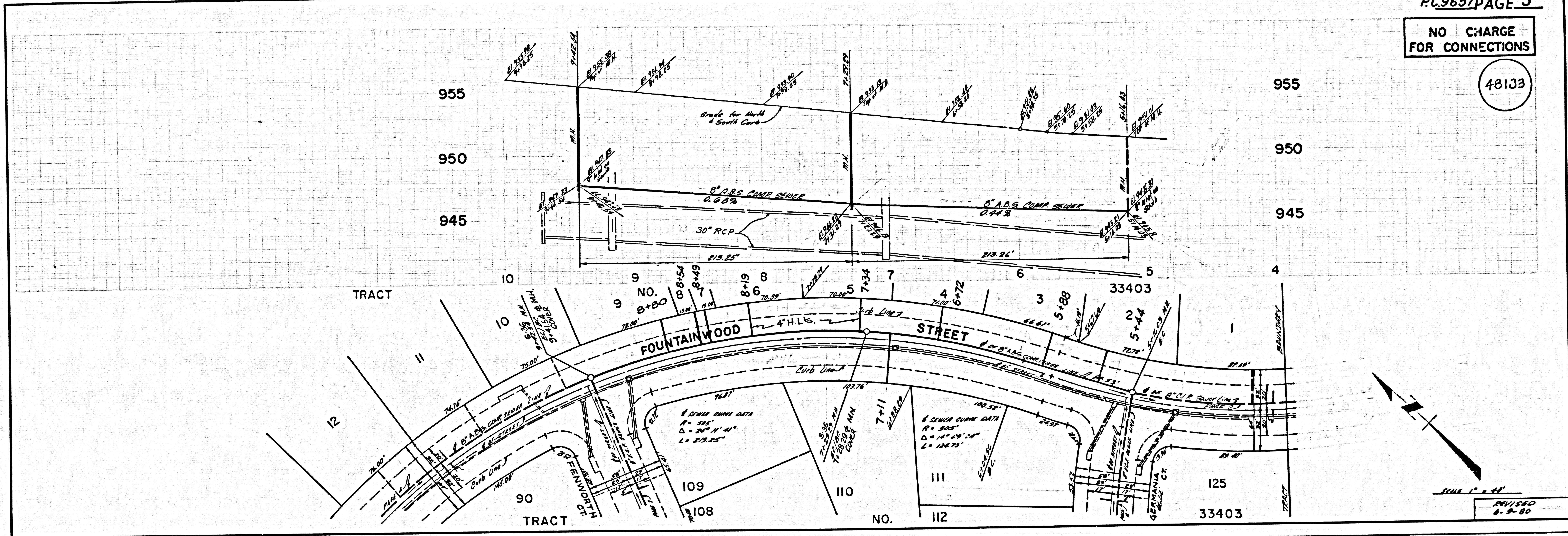
CONSTRUCTION NOTES CONTD.

- A.B.S. SOLID WALL PIPE MUST BE USED FOR WYE & HOUSE LATERAL CONNECTIONS TO A.B.S. COMPOSITE MANHOLE SEWER PIPE.
- A.B.S. COMPOSITE PIPE SHALL BE BEDDED IN CONFORMANCE WITH THE TABLE IN SECTION 5-31 OF PART II OF SPECIAL PROVISIONS.



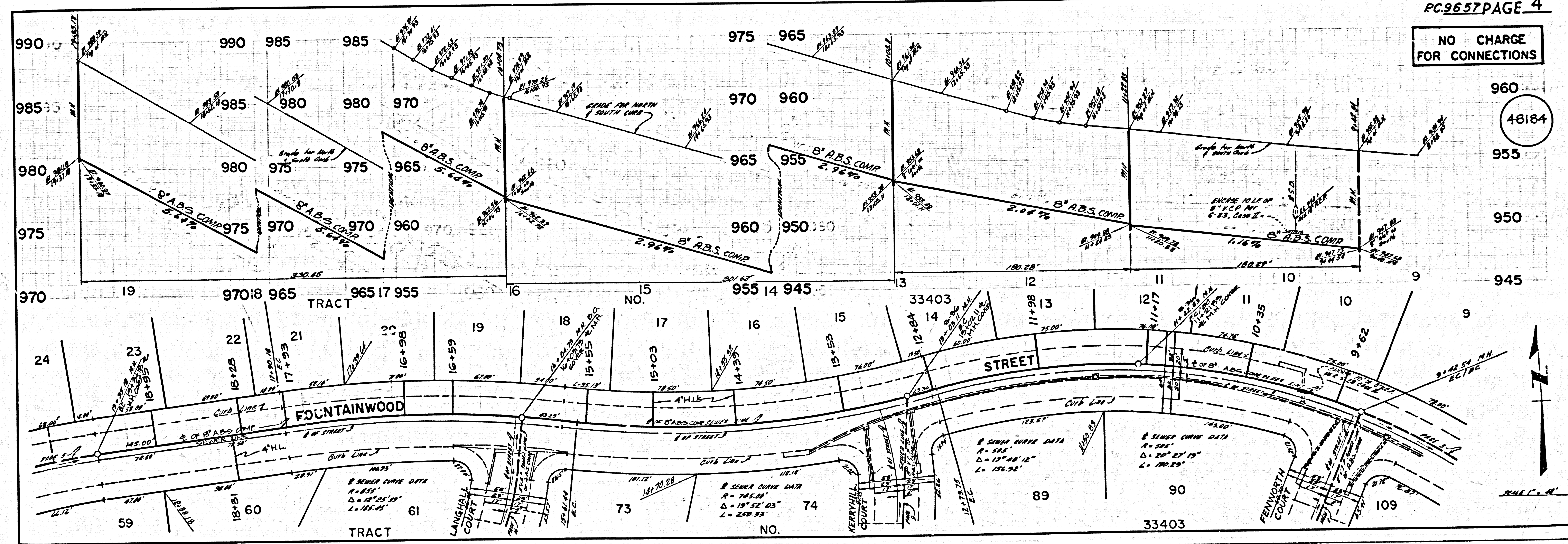
NO CHARGE FOR CONNECTIONS

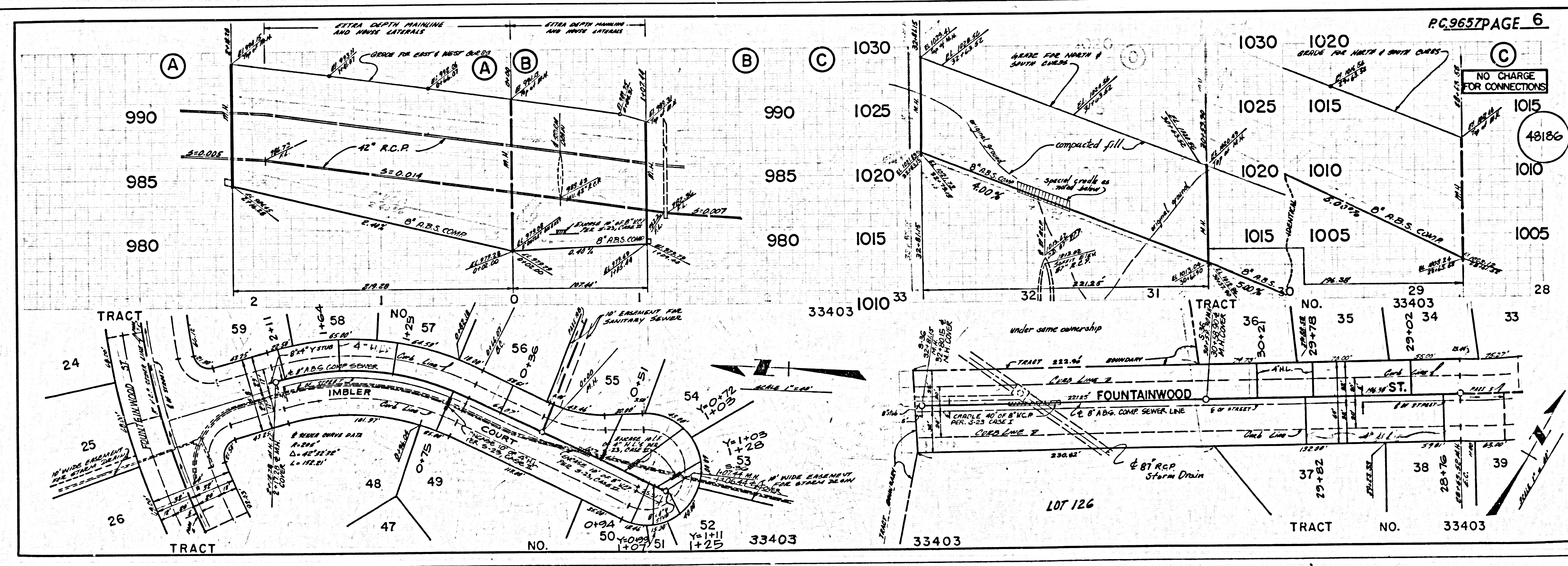
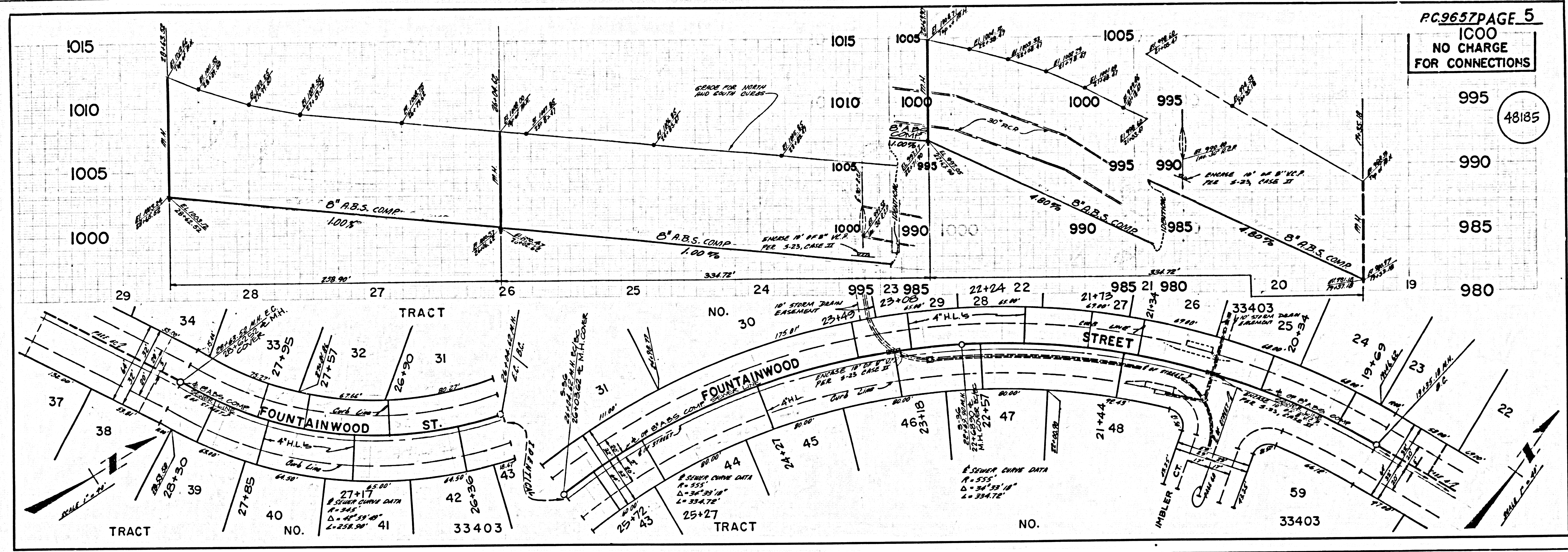
48133



NO CHARGE FOR CONNECTIONS

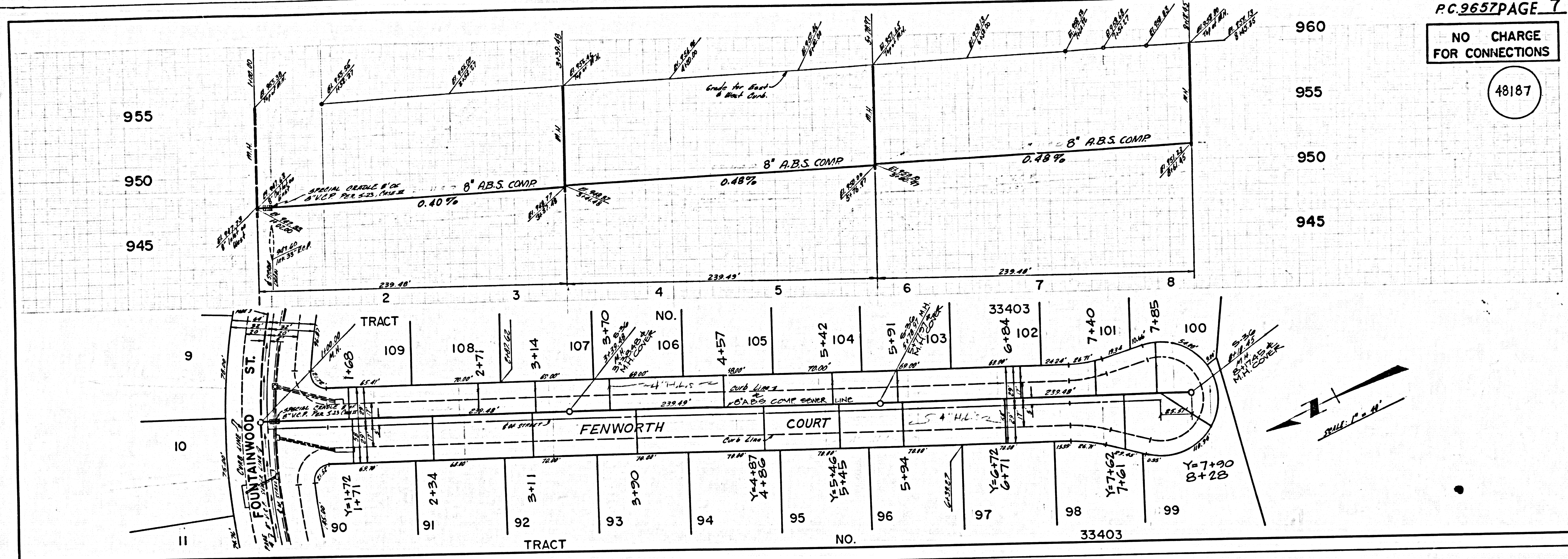
48184





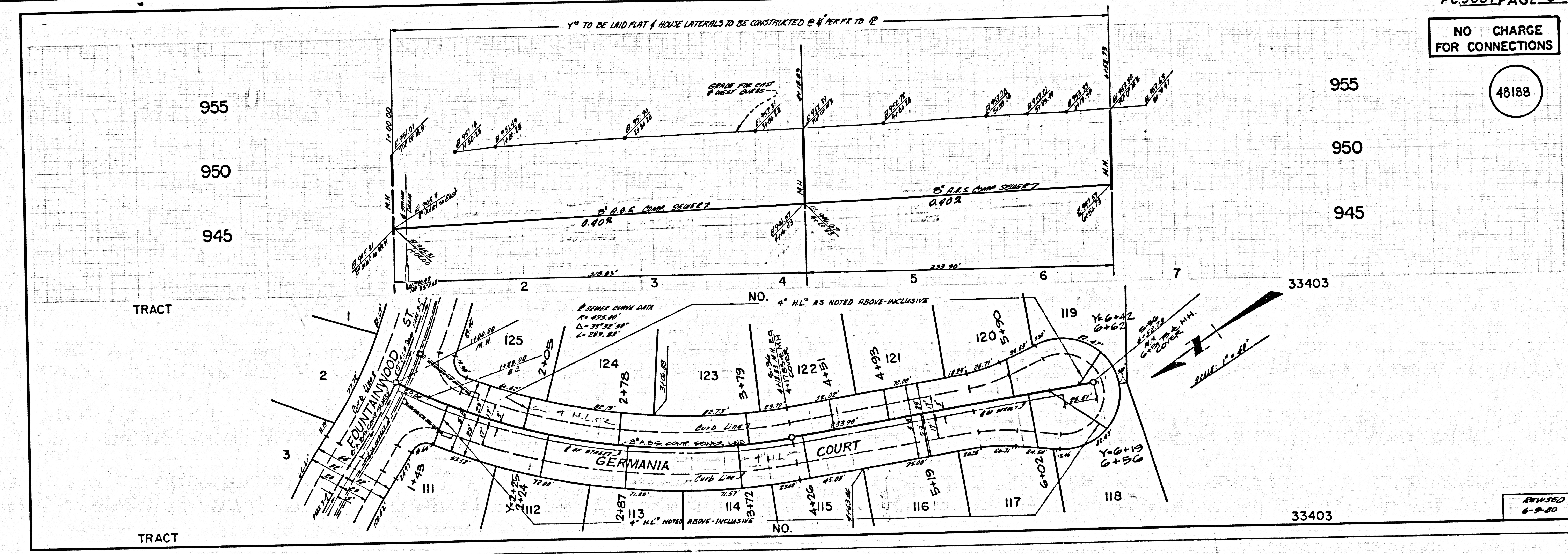
NO CHARGE FOR CONNECTIONS

48187



NO CHARGE FOR CONNECTIONS

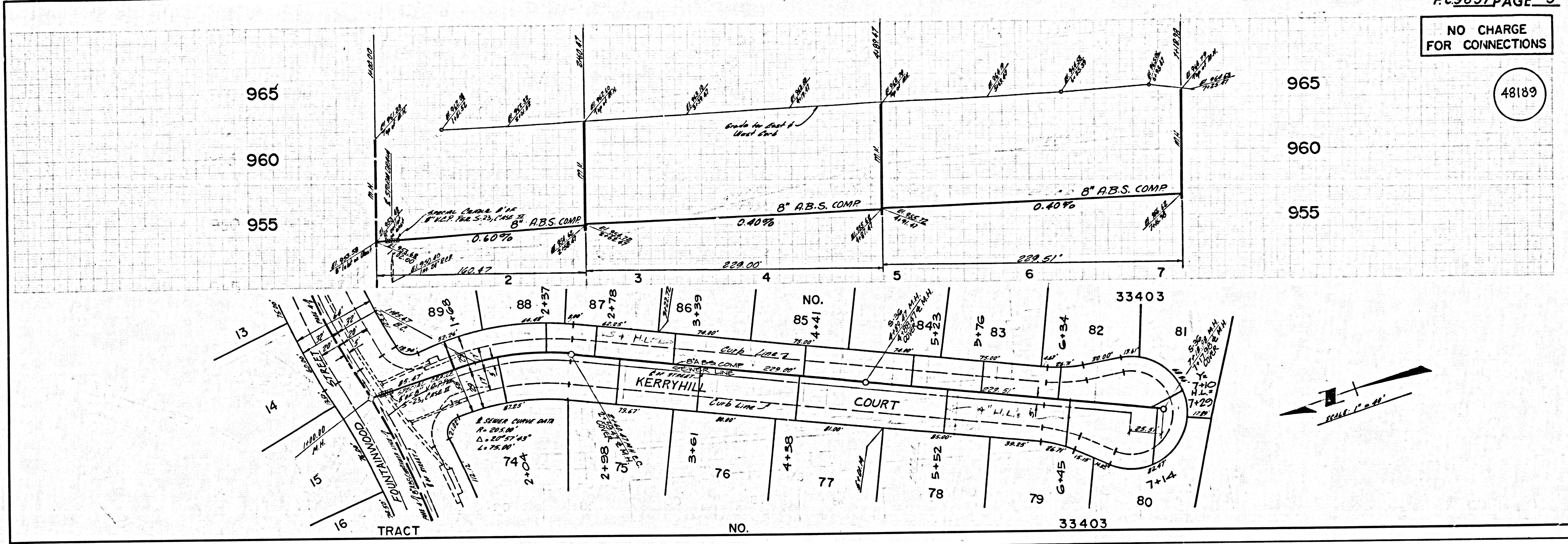
48188



REVISED 6-9-00

NO CHARGE FOR CONNECTIONS

48189



NO CHARGE FOR CONNECTIONS

48190

