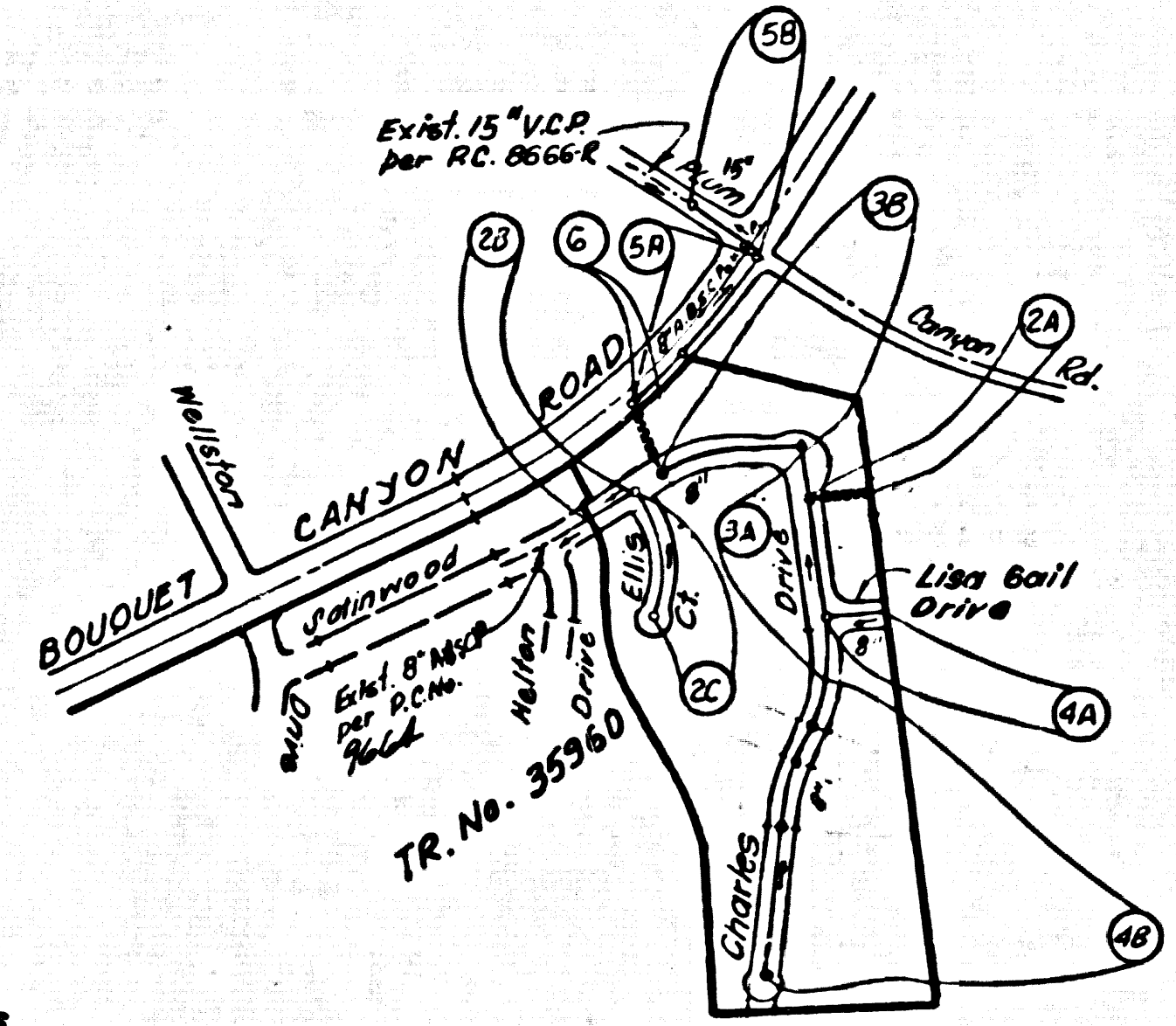


TO BE CONSTRUCTED IN
TRACT N° 35961
PRIVATE CONTRACT NO. 9660

W.S. 62
 3 SHEETS, 6 PAGES (47840)
 SCALE: VERT. 1"=4' HORIZ. 1"=40'
 JAN. 1979
 PREPARED IN THE OFFICES OF
ENGINEERING SERVICE CORPORATION
 4676 ADAMANTY BLVD., MARINA DEL REY, CALIFORNIA, 90291
 BY: *J.R. [Signature]*
 REG. C.E. No. 13095

B.M. BL. 2963 ELEV. 1301.851
 RD. 8M. 726. N.C. & 2'E. B.C. @ ONE COR.
 BOUQUET CANYON RD. AND URBANDALE AVE.
 73°1'N.V. + 20°E. OF E. INT
 NEWHALL QUAD. 19.72

- CONSTRUCTION NOTES (CONT.):**
- PIPE BRANCHES ONLY MAY BE USED FOR CONNECTIONS TO MAINLINE SEWER IF A.B.S.C. IS USED.
 - ALL UNITS BETWEEN EAST MAIN PIPE AND A.B.S.C. SHALL BE MADE WITH APPROVED FITTINGS.
 - FULL COMPLIANCE WITH PART 22 OF THE SPECIAL PROVISIONS IS REQUIRED FOR THE INSTALLATION OF A.B.S. CONDUITS AND A B.S. BOND UNLESS HOUSE LATERALS.
 - MANHOLE SHAFTS SHIP BRASSES AND CLIMBERS ARE REQUIRED FOR THE CONNECTION OF A.B.S. CONDUITS PIPE TO MANHOLE STRUCTURES.
 - A.B.S. BOND SHALL BE USED FOR WYE AND HOUSE LATERAL CONNECTIONS TO A.B.S. COMPOSITE MANHOLE BENCHER PIPE.
 - 3-DEGREE SAGRATION COUPLERS SHOULD BE USED TO ACCOMPLISH RADII OF CURVATURE LESS THAN 80'.
 - A.B.S. CONDUITS PIPE SHALL BE BEGGED IN CONFORMANCE WITH THE TABLE IN SECTION 26 PART 22 OF THE SPECIAL PROVISIONS.
 - SPECIAL BRICKS IN EASEMENT CONSTRUCTION:
 - BACKFILL TRENCH AND REPLACE OTHER EARTH SO AS TO ACHIEVE THE NATURAL OR FINISHED GRADES AND SLOPES SHOWN ON THE GRADING PLAN APPROVED FOR THIS DEVELOPMENT BY THE BUILDING AND SAFETY DIVISION.
 - ALL BACKFILL AND PARTY WALLS SHALL BE CONSTRUCTED TO A MINIMUM OF 90% OF MAXIMUM DENSITY PER A.S.T.M. STANDARD METHOD OR TEST 600-57T AS MODIFIED. ACCEPTABLE CERTIFICATION OF EACH CONNECTION SHALL BE SUBMITTED TO THE ENVIRONMENTAL DEVELOPMENT DIVISION.



INDEX MAP
 SCALE: 1" = 500'

NOTE:
 NUMBERS IN CIRCLES INDICATE PAGE NUMBERS.

BEFORE BREAKING INTO OR CONSTRUCTION ON A COUNTY SANITATION DISTRICT SEWER AND PRIOR TO FINAL ACCEPTANCE OF THE PROJECT SANITATION DISTRICT INSPECTOR SHALL BE NOTIFIED BY PHONE AND VISIT TO THE DISTRICT INSPECTOR CAN BE MADE.

NO CONNECTION FOR THE DISCHARGE OF INDUSTRIAL WASTES SHALL BE MADE TO SEWERS SHOWN ON THESE PLANS UNLESS A PERMIT FOR INDUSTRIAL WASTE WATER DISCHARGE HAS BEEN ISSUED BY THE SANITATION DISTRICTS FOR SAID CONNECTION.

PRIVATE ENGINEER'S NOTICE TO CONTRACTOR

The existence and location of any underground utility pipes or structures shown on these plans are obtained by a search of the available records. To the best of our knowledge there are no existing utilities except as shown on this map.

The Contractor is required to take precautionary measures to protect the utility lines shown and any other lines not of record or not shown on this drawing.

Contractor agrees that he shall assume sole and complete responsibility for job site conditions during the course of construction of this Project, including safety of all persons and property; that this requirement shall apply continuously and not be limited to normal working hours; and that the Contractor shall defend, indemnify and hold the Owner and the Engineer harmless from any and all liability, real or alleged, in connection with the performance of work on this Project, excepting for liability arising from the sole negligence of the Owner or the Engineer.

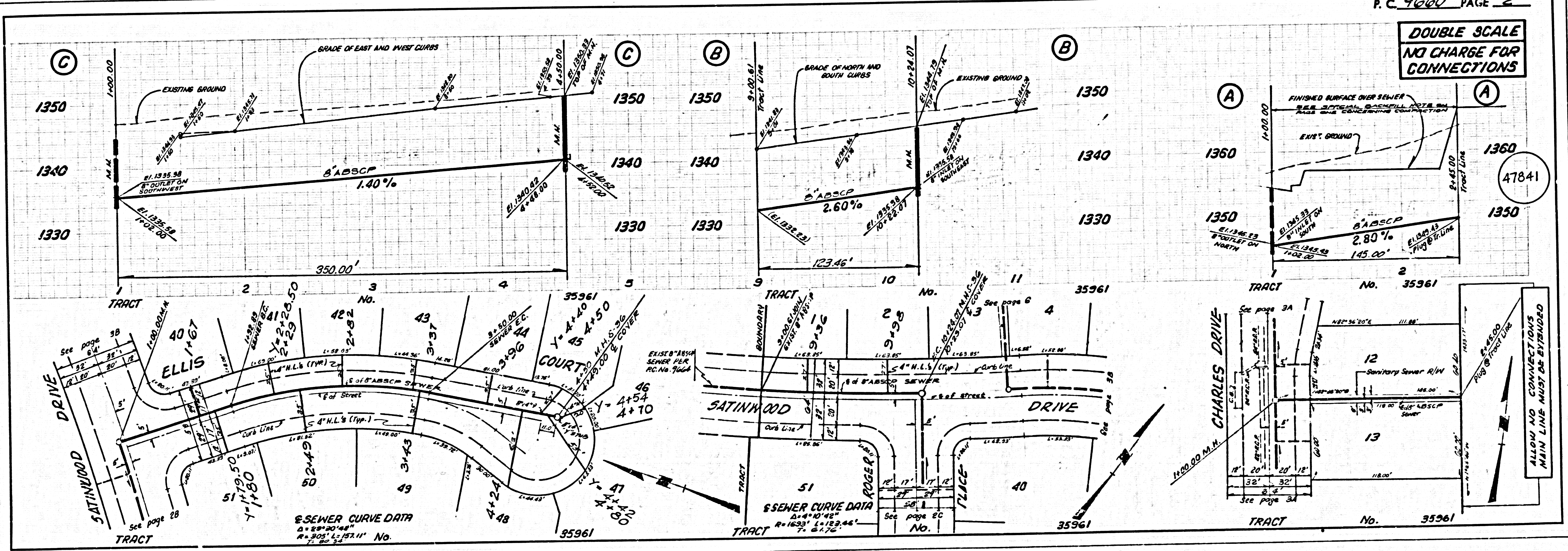
- GENERAL NOTES:**
- EXPLANATIONS ARE IN METRIC UNITS U.S.C. & G.S. SEA LEVEL DATUM OF 1929.
 - NO ELEVATIONS SHALL BE MADE IN THESE PLANS WITHOUT THE APPROVAL OF THE COUNTY ENGINEER.
 - NO REPRESENTATIVE OF THE COUNTY ENGINEER WILL SURVEY OR LAY OUT ANY PORTION OF THE WORK.
 - GRADES TO WHICH THIS IMPROVEMENT IS TO BE CONSTRUCTED ARE SHOWN ON PLANS AND PROFILE. GRADE POINTS FOR TOP OF CURBS, CENTER LINE OF STREETS, OR CENTER LINE OF ALLEYS ARE SHOWN BY CIRCLES ON PROFILES. AT ALL POINTS BETWEEN DESIGNATED WATER POINTS THE GRADE SHALL BE ESTABLISHED SO AS TO CONFORM TO A STRAIGHT LINE BETWEEN SAID DESIGNATED POINTS.
 - THE PRIVATE ENGINEER SHALL FURNISH THE COUNTY ENGINEER WITH GRADE SHEETS AND STATIONING FOR ALL HOUSE LATERALS AND 12" OR 18" BRANCHES AND SHALL PROVIDE STAKES FOR THEM AT THEIR PROPER LOCATIONS WITH STATIONING PLANNED THEREON. ALL HOUSE LATERALS SHALL BE CONSTRUCTED BY A STAKEOUT ALIGNMENT AT RIGHT ANGLES FROM THE MAIN LINE SEWER EXCEPT AS SHOWN ON THE PLANS. HOUSE LATERALS FROM CHIMNEYS SHALL NOT HAVE AN ANGLE OF LESS THAN 45° WITH THE MAIN LINE SEWER. ANY CHANGE IN ALIGNMENT SHALL BE REQUESTED IN WRITING BY THE PRIVATE ENGINEER.
 - THE PRIVATE ENGINEER SHALL FURNISH THE HOUSE LATERAL DEPTH AT THE PROPERTY LINE BELOW THE TOP OF CURB ELEVATION FOR EACH HOUSE LATERAL ON THE GRADE SHEET.
 - BEFORE WORK CAN BE STARTED, THE CONTRACTOR MUST OBTAIN A PERMIT TO EXCAVATE IN COUNTY STREETS FROM THE L.A. COUNTY ROAD DEPT., DISTRICT OFFICE NO. 4, AND PAY A FEE TO THE COUNTY ENGINEER, 250 S. MAIN ST., LOS ANGELES, CALIF. TO COVER THE COST OF CONSTRUCTION INSPECTION AND RECORD PLANS.
 - IF WORK IS TO BE DONE IN A STATE HIGHWAY, A PERMIT MUST BE OBTAINED FROM THE STATE OF CALIFORNIA, DIVISION OF HIGHWAYS, 130 SOUTH SPRING STREET, LOS ANGELES, CALIFORNIA.
 - APPROVAL OF THIS PLAN BY THE COUNTY OF LOS ANGELES DOES NOT CONSTITUTE A REPRESENTATION AS TO THE ACCURACY OF THE LOCATION OF OR THE EXISTENCE OR NON-EXISTENCE OF ANY UNDERGROUND UTILITY PIPE, OR STRUCTURE WITHIN THE LIMITS OF THIS PROJECT. THIS NOTE APPLIES TO ALL PAGES.
 - REFER TO SECTION 26 PART 22 OF THE STANDARD SPECIFICATIONS REGARDING SAFETY QUIRES.
 - PRIOR TO INSTALLATION OF THE REQUIRED SEWER CONSTRUCTION PERMIT, THE CONTRACTOR SHALL OBTAIN AND FILE WITH THE COUNTY ENGINEER COPIES OF A PERMIT TO EXCAVATE IN COUNTY STREETS, FROM THE LOS ANGELES COUNTY ROAD DEPARTMENT, PERMIT AND REGULATIONS AND TECHNICIAN FROM THE STATE OF CALIFORNIA, DIVISION OF INDUSTRIAL SAFETY, AND A CERTIFICATE OF WORKER'S COMPENSATION INSURANCE, WITH THE DEPARTMENT OF COUNTY ENGINEER, 250 SOUTH VERNON, FROM LOS ANGELES, CALIFORNIA, BEING NAMED AS THE CONTRACTOR, UNLESS TO BE NOTICED BY THE COUNTY ENGINEER TO CANCELLATION OF POLICY.

- CONSTRUCTION NOTES:**
- WORK SHALL BE CONSTRUCTED ACCORDING TO THE STANDARD SPECIFICATIONS FOR PUBLIC WORKS CONSTRUCTION 1976 EDITION WITH 1977 SUPPLEMENT AND COUNTY ENGINEER SPECIAL PROVISIONS FOR THE CONSTRUCTION OF SANITARY SEWERS DATED 11/27/76 AND SHALL BE PROSECUTED ONLY IN THE PRESENCE OF THE COUNTY ENGINEER.
 - THE CONTRACTOR SHALL NOTIFY THE ENVIRONMENTAL DEVELOPMENT DIVISION BY TELEPHONE 818-738-2156 AT LEAST TWENTY FOUR HOURS BEFORE STARTING ANY WORK UNDER THIS CONTRACT.
 - HOUSE LATERALS TO BE CONSTRUCTED WITH INVERTS AT PROPERTY LINE 8 FEET BELOW CURB GRADE EXCEPT AS NOTED.
 - WYE OR THE BRANCHES MAY BE USED FOR CONNECTIONS TO MAINLINE SEWERS EXCEPT AS NOTED.
 - ALL STRUCTURES SHALL BE WITHIN MANHOLE PER 5-23 OR PER 5-23, CASE II, TWO FEET ON EACH SIDE FROM THE POINT OF INTERFERENCE.
 - PROTECT STAKES ON THE PROPERTY LINE OR PROPERTY LINE PRODUCED AT RIGHT ANGLES TO THE SEWER LINE AT THE CENTER LINE OF EACH MANHOLE.
 - MANHOLE TOPS IN UNIMPROVED RIGHTS OF WAY TO BE SIX INCHES ABOVE FINISHED GRADE.
 - VERTICAL CURVE FIVE POINTS SHALL BE TYPE "B", "C", OR "D" PER STANDARD SPECIFICATIONS SECTION 206-2.
 - IF A POWER POLE IS WITHIN THREE FEET OF THE SEWER, THE SEWER SHALL BE BEGGED PER 5-23, CASE II, TWO FEET ON EACH SIDE FROM THE POINT OF INTERFERENCE.
 - IF DURING THE COURSE OF CONSTRUCTION IT IS DETERMINED THAT THERE IS LESS THAN FOUR FEET OF COVER OVER THE TOP OF A MANHOLE OR HOUSE LATERAL OR UNDERGROUND STRUCTURE, THE PIPE SHALL BE BEGGED PER 5-23, CASE II UNLESS OTHERWISE APPROVED BY THE COUNTY ENGINEER.
 - ALL JOINTS BETWEEN CAST IRON PIPE AND VITRIFIED CLAY PIPE SHALL BE MADE WITH A RUBBER GASKET JOINT, TYPE "C" OR "D", WITHIN MANHOLES IF NECESSARY PER STANDARD SPECIFICATIONS AND SPECIAL PROVISIONS.
 - SEWERS TO BE PROTECT FOR DAMAGE PER SECTION 206.4 OF THE STANDARD SPECIFICATIONS AND SPECIAL PROVISIONS.
 - REINFORCE ALL TRENCHES WITHIN PAVED AREAS TO MEET L.A. COUNTY ROAD DEPT. OR CALIFORNIA STATE HIGHWAY REQUIREMENTS IN ACCORDANCE WITH PERMITS.
 - FULL COMPLIANCE WITH SECTION 206.4.6 OF THE SPECIAL PROVISIONS WILL BE OBTAINED FOR BACKFILL IN STREETS. CERTIFICATION OF BACKFILL CONSTRUCTION AND FIRM FORWARDERS BY A QUALIFIED, REGISTERED TESTING LABORATORY SHALL BE PROVIDED BY THE PERMITTEE PRIOR TO THE ISSUANCE OF A CERTIFICATE OF PARTIAL ACCEPTANCE.

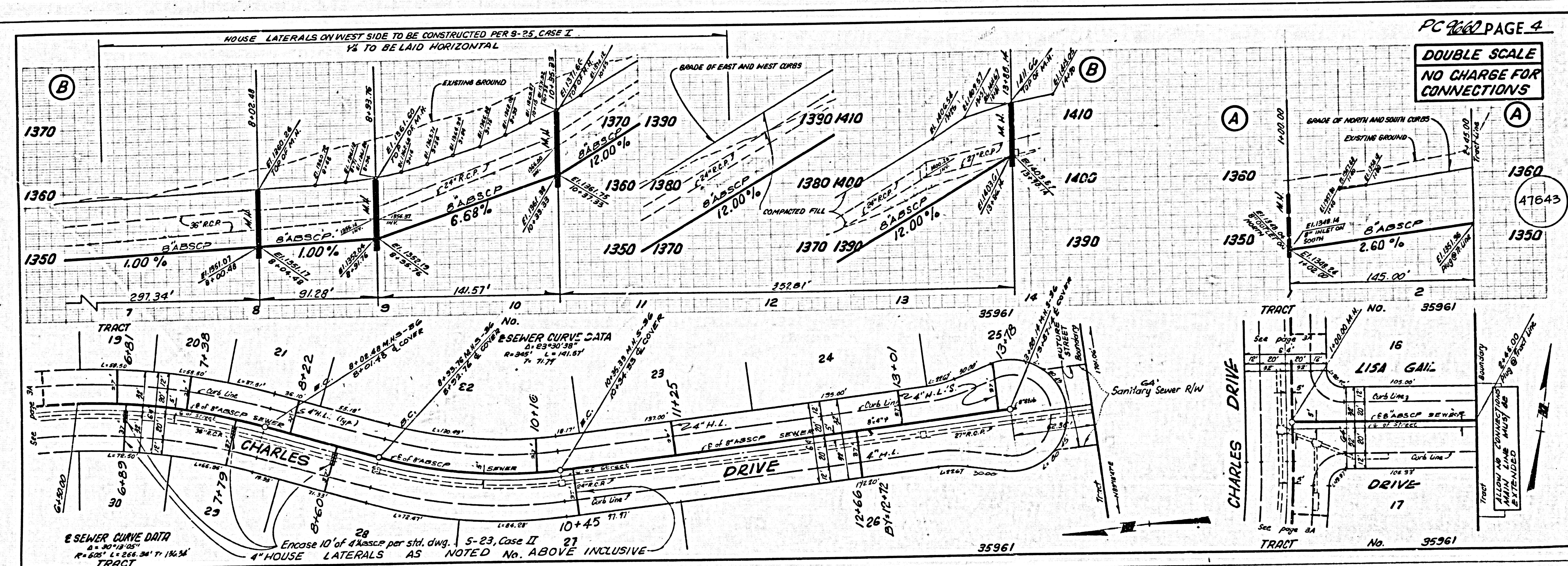
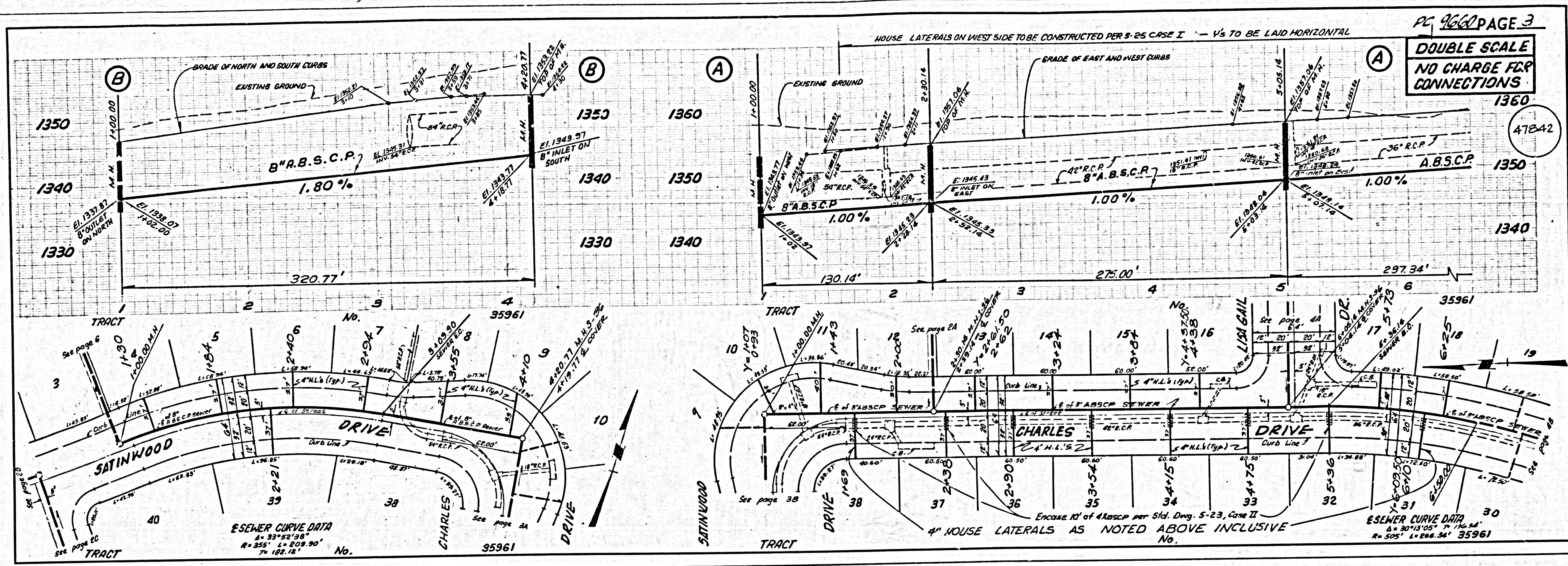
THE FOLLOWING LATEST REVISED STANDARD PLANS ON FILE IN THE OFFICE OF THE COUNTY ENGINEER SHALL APPLY IN THE CONSTRUCTION OF THIS PROJECT.

LEGEND	5-1
MINIMUM PUBLIC SAFETY REQUIREMENTS	5-2
BRICK MANHOLE	5-3
STANDARD MANHOLE STEP	5-17
BEDDING FOR SEWER PIPE	5-21
CLAMMING AND ENCASEMENT	5-26
WYE ON THE SURFACE	5-28
ALLOWABLE TRENCH WIDTHS	5-29
LOCKING MANHOLE FRAME AND COVER	5-30
NON-REINFORCED PRECAST CONCRETE MANHOLE	5-36
SPECIAL: HOUSE LATERALS	5-28
BEGGING REQUIREMENTS FOR PLASTIC PIPE	5-21, 5-27

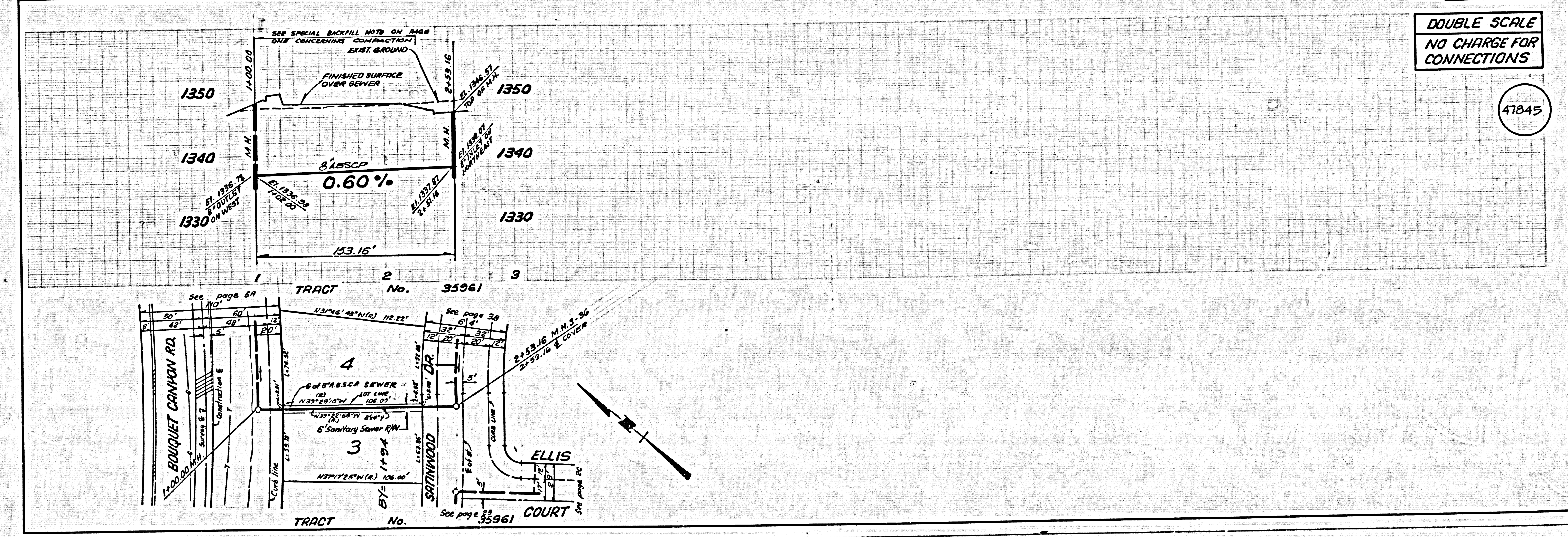
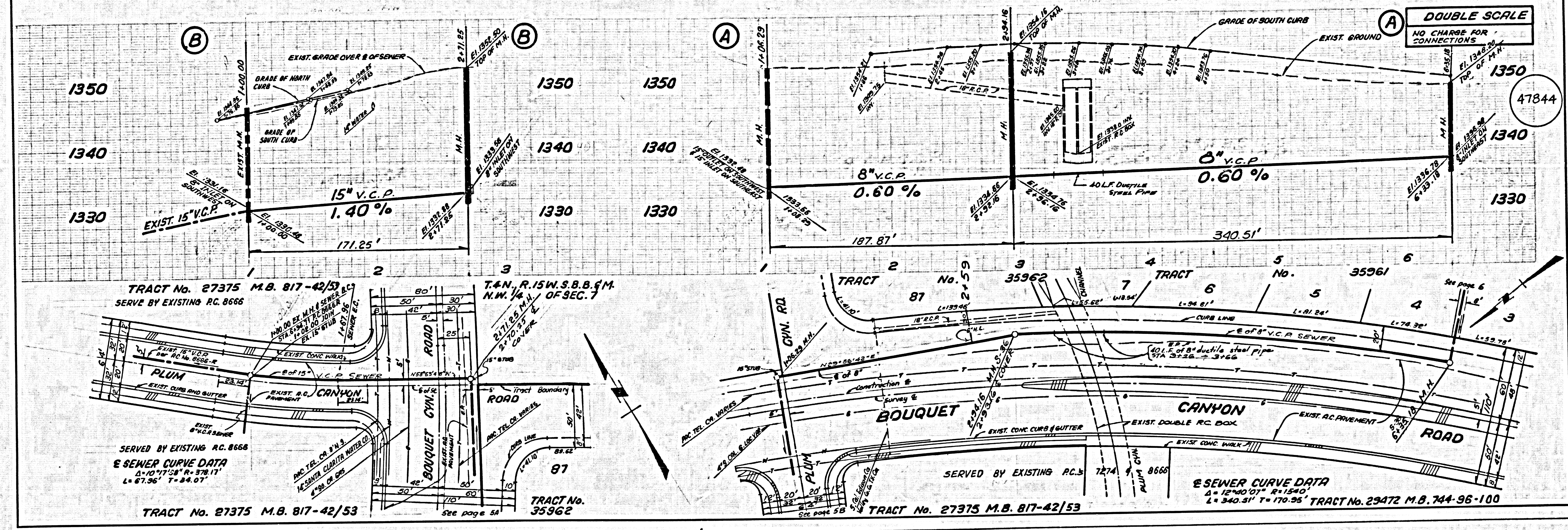
COUNTY OF LOS ANGELES, CALIFORNIA
 STEPHEN J. RANCE COUNTY ENGINEER WALTER E. GARRISON, CHIEF ENGINEER
 CO. SAN. DIST. NO. 22
 APPROVED *Conrad [Signature]* 8/21/79 APPROVED *Stephen J. Rance*
 DATE DATE OFFICE ENGINEER
 CHECKED *Ralph Davis* 8/21/79
 DATE
 REG. C.E. No. 16783
 SANTA CLARITA VALLEY BLDG. DIST. 22



P.C. 9660 PAGE 2
DOUBLE SCALE
NO CHARGE FOR CONNECTIONS



02000



PC 9660

DOUBLE SCALE
NO CHARGE FOR CONNECTIONS

DOUBLE SCALE
NO CHARGE FOR CONNECTIONS

47844

47845