

TO BE CONSTRUCTED IN

TRACT No. 35960
PRIVATE CONTRACT NO. 9664

W.S. 62
3 SHEETS, 5 PAGES

47767

SCALE: VERT. 1"=4'
HORIZ. 1"=40'
JAN., 1979
PREPARED IN THE OFFICES OF
ENGINEERING SERVICE CORPORATION
4816 ADAMS BLVD., PASADENA, CALIFORNIA, 92304
BY: J.R. Merrill
REG. C. E. No. 13095

THE FOLLOWING LATEST REVISION STANDARDS PLANS ON FILE IN THE OFFICE OF THE COUNTY ENGINEER SHALL APPLY IN THE CONSTRUCTION OF THIS PROJECT.

LEGEND	5-1
MINIMUM PUBLIC SAFETY REQUIREMENTS	5-2
BRICK MANHOLE	5-3
STANDARD MANHOLE STEP	5-4
BRICKWORK FOR SEWER PIPE	5-5
CHASING AND ENCASMENT	5-6
PIPE ON THE SUPPORT	5-7
ALLOWABLE TRENCH WIDTHS	5-8
LOCKING MANHOLE FRAME AND COVER	5-9
NON-REINFORCED PORTLAND CONCRETE MANHOLE	5-10
REINFORCED PORTLAND CONCRETE MANHOLE	5-11
REVISION REQUIREMENTS FOR PLASTIC PIPE	5-12

COUNTY OF LOS ANGELES, CALIFORNIA
STEPHEN J. KOONCE, COUNTY ENGINEER WALTER E. GARRISON, CHIEF ENGINEER
APPROVED *Robert W. Kuegel* 2-6-79 APPROVED *Frank R. Davis* 2/10/79
CHECKED *Ralph David Diet* 7/6/79
NO. C.E. NO. 16113
SANTA CLARITA VALLEY BLDG. DIST. 8-2

B.M. 2963 ELEV. 1301.851
RD. B.M. 728 N. C.B. 2'E. B.C.P. @ NE COR.
BOUQUET CANYON RD. AND URBANDALE AVE.
13° NW 20' E OF INT.
NEWHALL QUAD. 19 22

- CONSTRUCTION NOTES (CONT.)
- PIPE BRANCHES ONLY MAY BE USED FOR CONNECTIONS TO MAINLINE SEWER IF A.B.S.C.P. IS USED.
 - ALL JOINTS BETWEEN CAST IRON PIPE AND A.B.S. OR SHALL BE MADE WITH APPROVED FITTINGS.
 - PIPE COMPLIANCE WITH PART II OF THE SPECIAL PROVISIONS IS REQUIRED FOR THE INSTALLATION OF A B.S. COMPOSITE PIPE AND A.B.S. SHALL HAVE INSIDE LATERALS.
 - MANHOLE WATER STOP BANDS AND CLAMPS ARE REQUIRED FOR THE CONNECTION OF A B.S. COMPOSITE PIPE TO MANHOLE STRUCTURES.
 - A.B.S. SHALL BE USED FOR THE HOUSE AND HOUSE LATERAL CONNECTIONS TO A B.S. COMPOSITE MAINLINE SEWER PIPE.
 - 8-DIGIT DISSECTION COMPLETE SHOULD BE USED TO ACCOMPLISH BURNS OF CURVATURE LESS THAN 200'.
 - A.B.S. COMPOSITE PIPE SHALL BE ORDERED IN CONFORMANCE WITH THE TABLE IN SECTION 8-1 OF PART II OF THE SPECIAL PROVISIONS.

NO CONNECTION FOR THE DISPOSAL OF INDUSTRIAL WASTES SHALL BE MADE TO SEWERS SHOWN ON THESE DRAWINGS UNTIL A PERMIT FOR INDUSTRIAL WASTE WATER DISCHARGE HAS BEEN ISSUED BY THE SANITATION DISTRICTS WITH SAID CONNECTION.

BEFORE BREAKING INTO OR CONSTRUCTION ON A COUNTY MAINTENANCE DISTRICT SEWER AND PRIOR TO FINAL ACCEPTANCE OF THE PROJECT, PERMISSION MUST BE OBTAINED FROM THE DISTRICTS OF QUALITY ENGINEERS, 550 SOUTH WASHINGTON, ROOM 402, LOS ANGELES, CALIFORNIA 90071, THAT REQUIRED INSPECTION ONLY BE MADE.

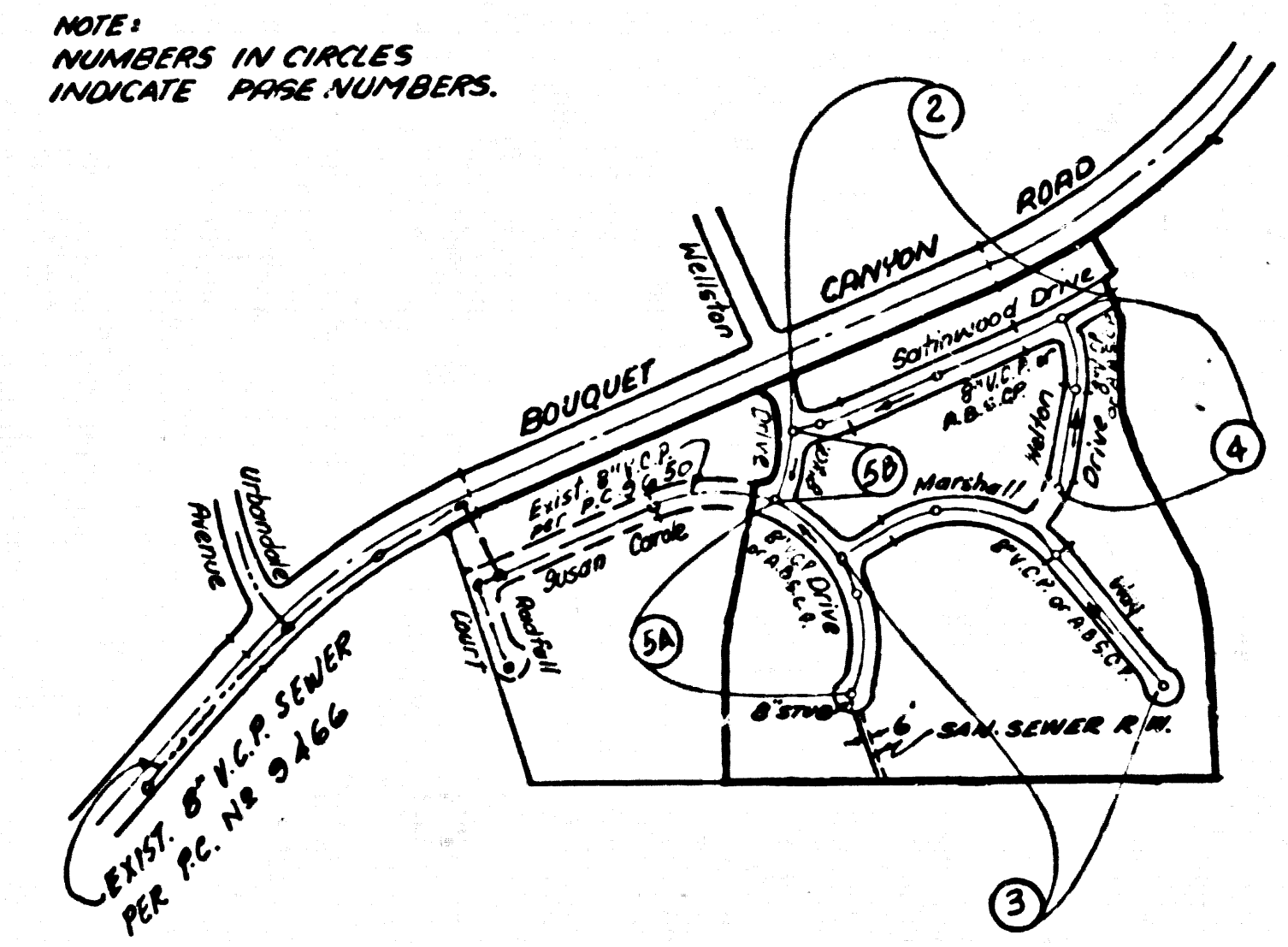
NOTE:
ISSUE NO PERMITS
UNTIL P.C. NO. 9660
TRACT NO. 35586
IS ACCEPTED.

PRIVATE ENGINEER'S
NOTICE TO CONTRACTOR

The existence and location of any underground utility pipes or structures shown on these plans are obtained by a search of the available records. To the best of our knowledge there are no existing utilities except as shown on this map.

The Contractor is required to take precautionary measures to protect the utility lines shown and any other lines not of record or not shown on this map.

Contractor agrees that he shall assume sole and complete responsibility for job site conditions during the course of construction of this Project, including safety of all persons and property; that this requirement shall apply continuously and not be limited to normal working hours; and that the Contractor shall defend, indemnify and hold the Owner and the Engineer harmless from any and all liability, real or alleged, in connection with the performance of work on this Project, excepting for liability arising from the sole negligence of the Owner or the Engineer.



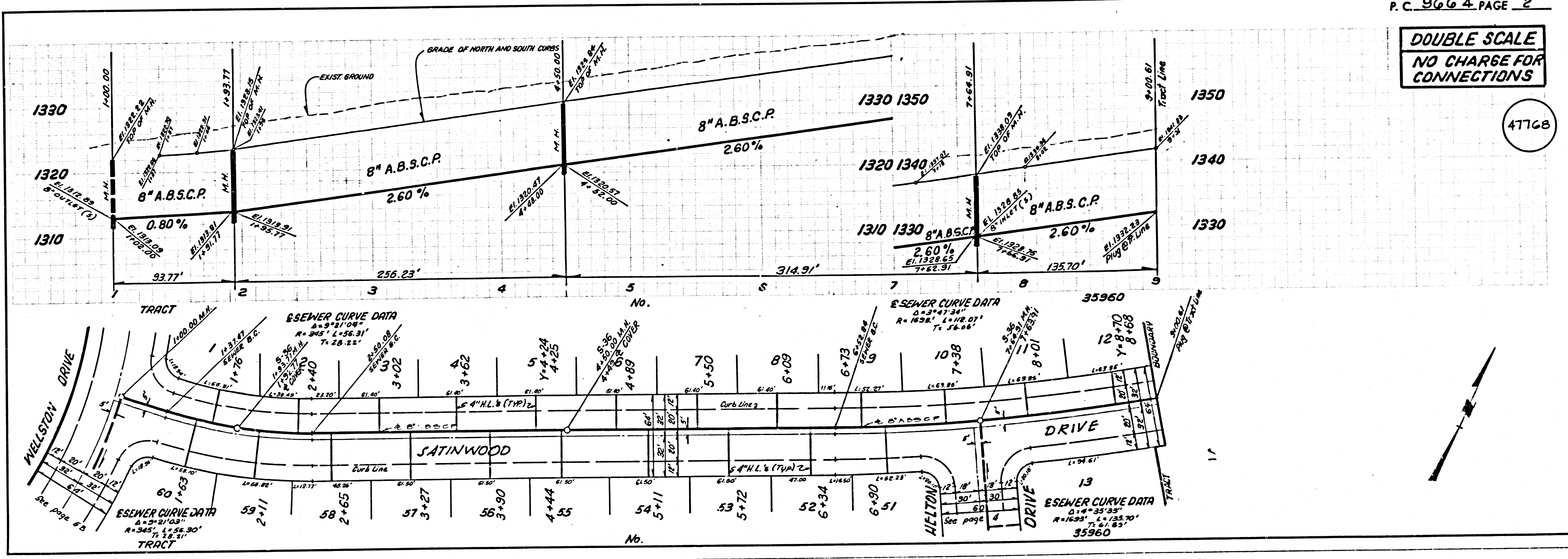
INDEX MAP
SCALE: 1"=800'
PC 9664
TRACT No. 35960

GENERAL NOTES:

- ELEVATIONS ARE IN FEET ABOVE U.S.C. & G.S. SEA LEVEL DATUM OF 1929.
- NO REVISIONS SHALL BE MADE IN THESE PLANS WITHOUT THE APPROVAL OF THE COUNTY ENGINEER.
- NO REPRESENTATIVE OF THE COUNTY ENGINEER WILL SURVEY OR LAY OUT ANY PORTION OF THE WORK.
- GRADING TO WHICH THIS IMPROVEMENT IS TO BE CONSTRUCTED ARE SHOWN ON PLANS AND PROFILES. GRADE POINTS FOR TOP OF CURBS, CENTER LINE OF STREETS, OR CENTER LINE OF ALLEYS ARE SHOWN BY CIRCLES ON PLANS AND PROFILES. AT ALL POINTS BETWEEN DESIGNATED POINTS THE GRADE SHALL BE ESTABLISHED SO AS TO CONFORM TO A STRAIGHT LINE BETWEEN SAID DESIGNATED POINTS.
- THE PRIVATE ENGINEER SHALL FURNISH THE COUNTY ENGINEER WITH GRADE SHEETS AND STATIONING FOR ALL HOUSE LATERALS AND "1" OR "1 1/2" BRANCHES AND SHALL PROVIDE STAKES FOR THEM AT THEIR PROPER LOCATIONS WITH STATIONING PLAINLY MARKED. ALL HOUSE LATERALS SHALL BE CONSTRUCTED IN A STRAIGHT ALIGNMENT AT RIGHT ANGLES FROM THE MAIN LINE SEWER EXCEPT AS SHOWN ON THE PLANS. HOUSE LATERALS FROM CHIMNEYS SHALL NOT HAVE AN ANGLE OF LESS THAN 45° WITH THE MAIN LINE SEWER. ANY CHANGE IN ALIGNMENT SHALL BE REQUESTED IN WRITING BY THE PRIVATE ENGINEER.
- THE PRIVATE ENGINEER SHALL FURNISH THE HOUSE LATERAL DEPTH AT THE PROPERTY LINE BELOW THE TOP OF CURB BENCH MARK FOR EACH HOUSE LATERAL ON THE GRADE SHEET.
- BEFORE WORK CAN BE STARTED, THE CONTRACTOR MUST OBTAIN A PERMIT TO EXCAVATE IN COUNTY STREETS FROM THE L.A. COUNTY PUBLIC WORKS DISTRICT OFFICE NO. 4, AND PAY A FEE TO THE COUNTY ENGINEER. F.P.S. 8, FORM NO. 8, REVISED 4/68.
- IF WORK IS TO BE DONE IN A STATE HIGHWAY, A PERMIT MUST BE OBTAINED FROM THE STATE OF CALIFORNIA, DIVISION OF HIGHWAYS, 120 SOUTH SPRING STREET, LOS ANGELES, CALIFORNIA.
- APPROVAL OF THIS PLAN BY THE COUNTY OF LOS ANGELES DOES NOT CONSTITUTE A REPRESENTATION AS TO THE ACCURACY OF THE LOCATION OF OR THE EXISTENCE OR NON-EXISTENCE OF ANY UNDERGROUND UTILITY PIPE, OR STRUCTURE WITHIN THE LIMITS OF THIS PROJECT. THIS NOTE APPLIES TO ALL PAGES.
- REFER TO SECTION 7-1.1 OF THE STANDARD SPECIFICATIONS FOR PUBLIC WORKS CONSTRUCTION (1978 EDITION) WITH 1972 SUPPLEMENT AND COUNTY ENGINEER SPECIAL PROVISIONS FOR THE CONSTRUCTION OF SANITARY SEWERS DATED 10/21/78 AND SHALL BE PROSECUTED ONLY IN THE PRESENCE OF THE COUNTY ENGINEER.
- THE CONTRACTOR SHALL NOTIFY THE CALIFORNIA PUBLIC UTILITIES DEPARTMENT BY TELEPHONE 627-751-5706 IF EXISTING POWER LINES ARE TO BE CONSTRUCTED WITHIN 10 FEET OF ANY POWER LINES.
- HOUSE LATERALS TO BE CONSTRUCTED WITH INVERTS AT PROPERTY LINE & FEET BELOW CURB GRADE EXCEPT AS NOTED.
- PIPE OR THE BRANCHES MAY BE USED FOR CONNECTIONS TO MAINLINE SEWERS EXCEPT AS NOTED.
- ALL STRUCTURES SHALL BE EITHER BRICK MANHOLES PER 5-3 OR PRECAST CONCRETE MANHOLES PER 5-10, EXCEPT AS NOTED.
- PROVIDE STAKES ON THE PROPERTY LINE OR PROPERTY LINES PRODUCED AT RIGHT ANGLES TO THE SEWER LINE AT THE CENTER LINE OF EACH MANHOLE.
- MANHOLE TOPS IN UNIMPROVED RIGHTS OF WAY TO BE SIX INCHES ABOVE FINISHED GRADE.
- VERTICAL CURVE JOINTS SHALL BE TYPE "P", "F", OR "C" PER STANDARD SPECIFICATIONS SECTION 208-2.
- IF A POWER POLE IS WITHIN THREE FEET OF THE SEWER, THE SEWER SHALL BE ENCASED, PER 5-23, CASE 2, TWO FEET OVER EACH SIDE FROM THE POINT OF INTERFERENCE.
- IF DURING THE COURSE OF CONSTRUCTION IT IS DETERMINED THAT THERE IS LESS THAN FOUR FEET OF COVER OVER THE TOP OF A MAINLINE OPEN-END LATERAL PER 5-3 OR A.B.S.C.P. PIPE AND THAT INCISED ON THE PLAN, THE PIPE SHALL BE ENCASED PER 5-23, CASE 2, UNLESS OTHERWISE APPROVED BY THE COUNTY ENGINEER.
- ALL JOINTS BETWEEN CAST IRON PIPE AND VITRIFIED CLAY PIPE SHALL BE MADE WITH A RUBBER SEWER JOINT, TYPE "C" OR "B", WITH BUSHING IF NECESSARY PER STANDARD SPECIFICATIONS, SECTION 208-1.
- SEWERS TO BE TESTED FOR LEAKAGE PER SECTION 208-4.4 OF THE STANDARD SPECIFICATIONS AND SPECIAL PROVISIONS.
- REINFORCE ALL TRENCHES WITHIN ALLEYS AREAS TO MEET L.A. COUNTY ROAD DEPT. OR CALIFORNIA STATE HIGHWAY REQUIREMENTS IN ACCORDANCE WITH PERMITS.
- FULL COMPLIANCE WITH SECTION 208-1.1 OF THE SPECIAL PROVISIONS WILL BE REQUIRED FOR BACKFILL IN STREETS. CERTIFICATION OF BACKFILL CONSTRUCTION AND SAID BACKFILL SHALL BE PROVIDED BY THE CONTRACTOR TO THE COUNTY ENGINEER PRIOR TO THE ISSUANCE OF A CERTIFICATE OF PARTIAL ACCEPTANCE.

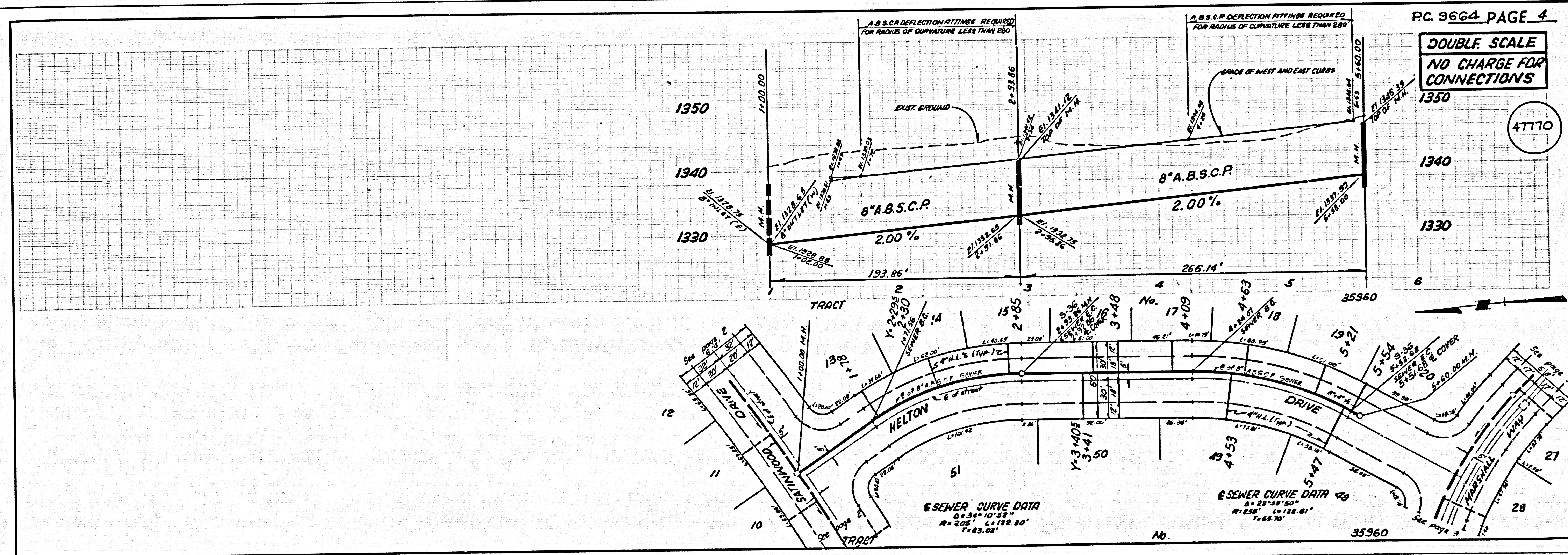
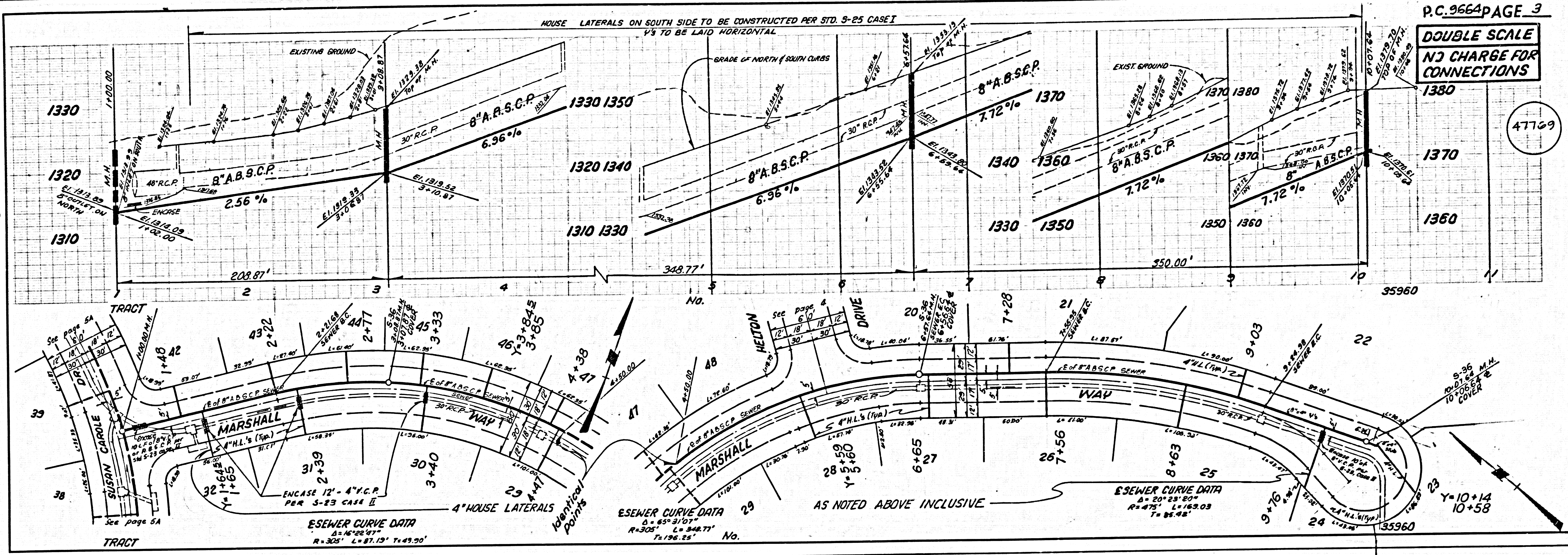
CONSTRUCTION NOTES:

- WORK SHALL BE CONSTRUCTED ACCORDING TO THE STANDARD SPECIFICATIONS FOR PUBLIC WORKS CONSTRUCTION (1978 EDITION) WITH 1972 SUPPLEMENT AND COUNTY ENGINEER SPECIAL PROVISIONS FOR THE CONSTRUCTION OF SANITARY SEWERS DATED 10/21/78 AND SHALL BE PROSECUTED ONLY IN THE PRESENCE OF THE COUNTY ENGINEER.
- THE CONTRACTOR SHALL NOTIFY THE CALIFORNIA PUBLIC UTILITIES DEPARTMENT BY TELEPHONE 627-751-5706 IF EXISTING POWER LINES ARE TO BE CONSTRUCTED WITHIN 10 FEET OF ANY POWER LINES.
- HOUSE LATERALS TO BE CONSTRUCTED WITH INVERTS AT PROPERTY LINE & FEET BELOW CURB GRADE EXCEPT AS NOTED.
- PIPE OR THE BRANCHES MAY BE USED FOR CONNECTIONS TO MAINLINE SEWERS EXCEPT AS NOTED.
- ALL STRUCTURES SHALL BE EITHER BRICK MANHOLES PER 5-3 OR PRECAST CONCRETE MANHOLES PER 5-10, EXCEPT AS NOTED.
- PROVIDE STAKES ON THE PROPERTY LINE OR PROPERTY LINES PRODUCED AT RIGHT ANGLES TO THE SEWER LINE AT THE CENTER LINE OF EACH MANHOLE.
- MANHOLE TOPS IN UNIMPROVED RIGHTS OF WAY TO BE SIX INCHES ABOVE FINISHED GRADE.
- VERTICAL CURVE JOINTS SHALL BE TYPE "P", "F", OR "C" PER STANDARD SPECIFICATIONS SECTION 208-2.
- IF A POWER POLE IS WITHIN THREE FEET OF THE SEWER, THE SEWER SHALL BE ENCASED, PER 5-23, CASE 2, TWO FEET OVER EACH SIDE FROM THE POINT OF INTERFERENCE.
- IF DURING THE COURSE OF CONSTRUCTION IT IS DETERMINED THAT THERE IS LESS THAN FOUR FEET OF COVER OVER THE TOP OF A MAINLINE OPEN-END LATERAL PER 5-3 OR A.B.S.C.P. PIPE AND THAT INCISED ON THE PLAN, THE PIPE SHALL BE ENCASED PER 5-23, CASE 2, UNLESS OTHERWISE APPROVED BY THE COUNTY ENGINEER.
- ALL JOINTS BETWEEN CAST IRON PIPE AND VITRIFIED CLAY PIPE SHALL BE MADE WITH A RUBBER SEWER JOINT, TYPE "C" OR "B", WITH BUSHING IF NECESSARY PER STANDARD SPECIFICATIONS, SECTION 208-1.
- SEWERS TO BE TESTED FOR LEAKAGE PER SECTION 208-4.4 OF THE STANDARD SPECIFICATIONS AND SPECIAL PROVISIONS.
- REINFORCE ALL TRENCHES WITHIN ALLEYS AREAS TO MEET L.A. COUNTY ROAD DEPT. OR CALIFORNIA STATE HIGHWAY REQUIREMENTS IN ACCORDANCE WITH PERMITS.
- FULL COMPLIANCE WITH SECTION 208-1.1 OF THE SPECIAL PROVISIONS WILL BE REQUIRED FOR BACKFILL IN STREETS. CERTIFICATION OF BACKFILL CONSTRUCTION AND SAID BACKFILL SHALL BE PROVIDED BY THE CONTRACTOR TO THE COUNTY ENGINEER PRIOR TO THE ISSUANCE OF A CERTIFICATE OF PARTIAL ACCEPTANCE.



DOUBLE SCALE
NO CHARGE FOR
CONNECTIONS

47768



47769

47770

47769

