

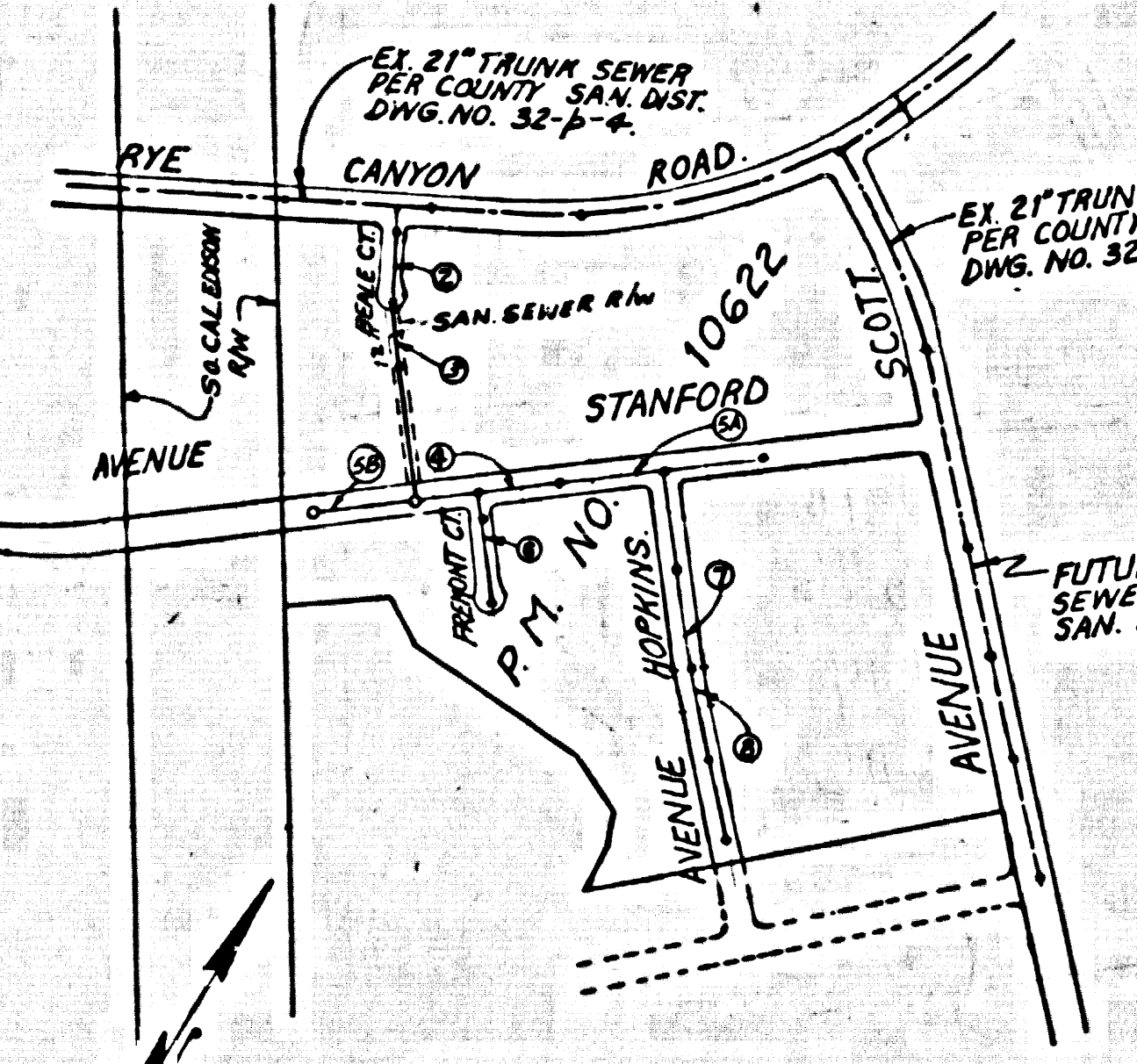
B.M. CL 1774 ELEV. 1078.915
 ROOM TAB 3 C.B. TRAFFIC ISL 15 FT. N CIL
 S RONY MAGIC MT. PKWY. & 70 FT. W CIL
 GOLDEN ST. FRWY. BRIDGE 853-1625
 NEWHALL QUAD. 19 78

SPECIAL BACKFILL IN EASEMENT CONSTRUCTION
 a. BACKFILL TRENCH AND REPLACE OTHER EARTH SO AS TO ACHIEVE THE NATURAL OR FINISHED GRADES AND SLOPES SHOWN ON THE GRADING PLAN APPROVED FOR THIS DEVELOPMENT BY THE BUILDING AND SAFETY DIVISION.
 b. ALL BACKFILL AND EARTH REPLACED SHALL BE COMPACTED TO A MINIMUM OF 90% OF MAXIMUM DENSITY PER A.S.T.M. STANDARD METHOD OF TEST D698-57T AS MODIFIED. ACCEPTABLE CERTIFICATION OF SUCH COMPACTION SHALL BE SUBMITTED TO THE DESIGN DIVISION.

LOTS 7 TO 11 WILL BE SERVED FROM EXIST. TRUNK SEWER
 LOTS 4 & 41 WILL BE SERVED FROM PROPOSED TRUNK SEWER

REVISION NO. 1 DATE 10-12-79
 PAGE 2. LOCATION OF SEWER IS MOVED FROM 5' NORTH TO 5' SOUTH OF BEAL COURT AND REVISED PROFILE.
 PAGE 3. REVISED PLAN & PROFILE.
 PAGE 4. REVISED PROFILE FROM STATION 1058+10 TO 1060+00.
 PAGE 5. REVISED PROFILE BEYOND 1060+00 LATERAL FOR LOT 1 IN AVENUE STANFORD ADDED 6" LATERAL IN LOT 10 WITH 6" PRIVATE LATERAL TO SERVICE LOT 10.
 PAGE 6. REVISED PROFILE FROM STATION 1060+00 TO 1062+00.
 APPROVED: *Edmund J. Keigel* 10/15/79
 OFFICE OF COUNTY ENGINEER / P.C. NO. 10622

NO PROTECTION FOR THE DISPOSAL OF INDUSTRIAL WASTES SHALL BE MADE TO SEWERS SHOWN ON THIS PLAN UNLESS A PERMIT FOR INDUSTRIAL WASTE WATER DISCHARGE HAS BEEN ISSUED BY THE SANITATION DISTRICTS RES. SAN. CONNECTION BEFORE BEING MADE OR CONSTRUCTION ON A DRAINAGE UNIT UNDER CONSTRUCTION SHALL BE STOPPED TO THE EXTENT OF THE PROTECTIVE WORKS TO BE COMPLETED.
 BEFORE BEING MADE OR CONSTRUCTION ON A DRAINAGE UNIT UNDER CONSTRUCTION SHALL BE STOPPED TO THE EXTENT OF THE PROTECTIVE WORKS TO BE COMPLETED.



INDEX MAP
 SCALE: 1" = 600'
 P.C. 9673
 P.M. NO. 10622
 NOTE: NUMBER IN CIRCLES INDICATES PAGE NUMBER

- GENERAL NOTES:**
- SEWERAGE IS TO BE IN ACCORDANCE WITH THE STANDARD SPECIFICATIONS FOR PUBLIC WORKS CONSTRUCTION OF THE COUNTY OF LOS ANGELES, CALIFORNIA.
 - NO SEWERAGE SHALL BE MADE ON THESE PLANS WITHOUT THE APPROVAL OF THE COUNTY ENGINEER.
 - NO REPRESENTATIVE OF THE COUNTY ENGINEER SHALL BE REQUIRED TO LAY OUT ANY PORTION OF THE WORK.
 - GRADES TO WHICH THIS IMPROVEMENT IS TO BE CONSTRUCTED ARE SHOWN ON THESE PLANS AND PROFILES. GRADE POINTS FOR TOP OF CURB, CENTER LINE OF STREET, OR CENTER LINE OF ALLEY ARE SHOWN BY CHECKS ON PROFILES. AT ALL POINTS BETWEEN THE INDICATED POINTS THE GRADE SHALL BE ESTABLISHED SO AS TO CONFORM TO A STRAIGHT LINE BETWEEN SAID INDICATED POINTS.
 - THE PRIVATE PROPERTY OWNER SHALL FURNISH THE COUNTY ENGINEER WITH GRADE SHEETS AND STATIONING FOR ALL HOUSE LATERALS AND "T" OR "C" MANHOLES AND SHALL PROVIDE STAKES FOR THESE AT THEIR PROPER LOCATIONS WITH STATIONING. STAKES SHALL BE SHOWN ON THE PLANS. HOUSE LATERALS FROM COUNTERS SHALL NOT HAVE AN ANGLE OF LESS THAN 45° WITH THE MAIN LINE SEWER. ANY CHANGE IN ANGLE SHALL BE INDICATED BY THE PRIVATE ENGINEER.
 - THE PRIVATE PROPERTY OWNER SHALL FURNISH THE HOUSE LATERAL SEWER AT THE PROPERTY LINE BELOW THE TOP OF CURB SEPARATION FOR EACH HOUSE LATERAL ON THE GRADE SHEET.
 - BEFORE WORK CAN BE STARTED, THE CONTRACTOR MUST OBTAIN A PERMIT TO EXCAVATE IN COUNTY STREETS FROM THE L.A. COUNTY ROAD DEPT., DISTRICT OFFICE NO. 4, AND PAY A FEE TO THE COUNTY ENGINEER, 550 SOUTH WILMONT, ROOM 405, SECOND FLOOR, TO COVER THE COST OF CONSTRUCTION INSPECTION AND RECORD PLANS.
 - IF WORK IS TO BE DONE IN A STATE HIGHWAY, A PERMIT MUST BE OBTAINED FROM THE STATE OF CALIFORNIA, DIVISION OF HIGHWAYS, 120 SOUTH BRIDGE STREET, LOS ANGELES, CALIFORNIA.
 - APPROVAL OF THE PLAN BY THE COUNTY OF LOS ANGELES DOES NOT CONSTITUTE A REPRESENTATION AS TO THE ACCURACY OF THE LOCATION OF OR THE EXISTENCE OR NON-EXISTENCE OF ANY UNDERGROUND UTILITY PIPE, OR STRUCTURE WITHIN THE LIMITS OF THIS PROJECT. THIS NOTE APPLIES TO ALL PAGES.
 - REFER TO SECTION 7-1.4.1 OF THE STANDARD SPECIFICATIONS, REGARDING SAFETY DEVICES.
 - REFER TO THE SEWERAGE OR SEWERS SEWER CONSTRUCTION MANUAL, THE CONTRACTOR SHALL OBTAIN AND FURNISH WITH THE COUNTY ENGINEER'S OFFICE OF A PERMIT TO EXCAVATE IN COUNTY STREETS FROM THE LOS ANGELES COUNTY PUBLIC DEPARTMENT, A PERMIT TO EXCAVATE AND TRENCHES FROM THE COUNTY OF CALIFORNIA, DIVISION OF INDUSTRIAL SAFETY AND A CERTIFICATE OF WORKER'S COMPENSATION INSURANCE WITH THE DEPARTMENT OF COUNTY ENGINEER, 550 SOUTH WILMONT, LOS ANGELES, CALIFORNIA. PERMITS MUST BE OBTAINED AS EARLY AS PRACTICABLE TO AVOID DELAY OF PROJECT.

- CONSTRUCTION NOTES:**
- WORK SHALL BE CONSTRUCTED IN ACCORDANCE WITH THE STANDARD SPECIFICATIONS FOR PUBLIC WORKS CONSTRUCTION OF THE COUNTY OF LOS ANGELES, CALIFORNIA. THE CONTRACTOR SHALL OBTAIN AND FURNISH WITH THE COUNTY ENGINEER'S OFFICE OF A PERMIT TO EXCAVATE IN COUNTY STREETS FROM THE LOS ANGELES COUNTY PUBLIC DEPARTMENT, A PERMIT TO EXCAVATE AND TRENCHES FROM THE COUNTY OF CALIFORNIA, DIVISION OF INDUSTRIAL SAFETY AND A CERTIFICATE OF WORKER'S COMPENSATION INSURANCE WITH THE DEPARTMENT OF COUNTY ENGINEER, 550 SOUTH WILMONT, LOS ANGELES, CALIFORNIA. PERMITS MUST BE OBTAINED AS EARLY AS PRACTICABLE TO AVOID DELAY OF PROJECT.
 - THE CONTRACTOR SHALL NOTIFY THE ENVIRONMENTAL DEVELOPMENT DIVISION AT BEALCOURT 861-9142, 2885 N. BEAL COURT, LOS ANGELES, CALIFORNIA, 90009, PRIOR TO THE START OF CONSTRUCTION OF ANY WORK UNDER THIS CONTRACT.
 - HOUSE LATERALS TO BE CONSTRUCTED WITH SEWER AT PROPERTY LINE & FURTHER CURE GRADE EXCEPT AS NOTED.
 - WORK ON THE MANHOLES MAY BE USED FOR CONNECTIONS TO ALIEN SEWERS EXCEPT AS NOTED.
 - ALL STRUCTURES SHALL BE BUILT ONCE MANHOLES ARE IN PLACE EXCEPT MANHOLES PER S.D. SECTION 10.1.1.1.
 - WORKING STAKES ON THE PROPERTY LINE OF PROPERTY LINES PROVIDED AT RIGHT ANGLES TO THE CENTER LINE AT THE CENTER LINE OF EACH MANHOLE.
 - MANHOLES SHALL BE UNIMPROVED UNLESS OTHERWISE NOTED.
 - UNIMPROVED CLAY PIPE JOINTS SHALL BE TYPE "D", "F", OR "G" PER STANDARD SPECIFICATIONS SECTION 306-2.
 - IF A POWER POLE IS WITHIN THREE FEET OF THE SEWER, THE SEWER SHALL BE ENCASED, PER S.D. CASE 32, TWO FEET ON EACH SIDE FROM THE POINT OF INTERFERENCE.
 - IF DURING THE COURSE OF CONSTRUCTION IT IS DETERMINED THAT THERE IS LESS THAN FOUR FEET OF COVER OVER THE TOP OF A MAIN LINE OR HOUSE LATERAL V.C.P. SEWER WHICH IS NOT INDICATED ON THE PLANS, THE PIPE SHALL BE ENCASED PER S.D. CASE 32 UNLESS OTHERWISE APPROVED BY THE COUNTY ENGINEER.
 - IF JOINTS BETWEEN CLAY PIPE AND UNIMPROVED CLAY PIPE SHALL BE MADE WITH A RUBBER GASKET JOINT, TYPE "C" OR "D", PER STANDARD SPECIFICATIONS, SECTION 306-2.
 - SEWER TO BE SET FOR SLOPE PER SECTION 306-1.4 OF THE STANDARD SPECIFICATIONS AND SPECIAL PROVISIONS.
 - REWORK ALL TRENCHES WITHIN FIVE FEET OF THE L.A. COUNTY ROAD DEPT. OF CALIFORNIA STATE HIGHWAY PROGRAMS IN ACCORDANCE WITH PERMITS.
 - FOR COMPLIANCE WITH SECTION 1.4.1.1 OF THE SPECIAL PROVISIONS, THE CONTRACTOR SHALL BE REQUIRED TO MAINTAIN EVIDENCE, CORROSION PROTECTION, AND RECORDS OF ALL SPECIAL PROVISIONS. THE CONTRACTOR SHALL BE REQUIRED TO MAINTAIN EVIDENCE, CORROSION PROTECTION, AND RECORDS OF ALL SPECIAL PROVISIONS. THE CONTRACTOR SHALL BE REQUIRED TO MAINTAIN EVIDENCE, CORROSION PROTECTION, AND RECORDS OF ALL SPECIAL PROVISIONS.

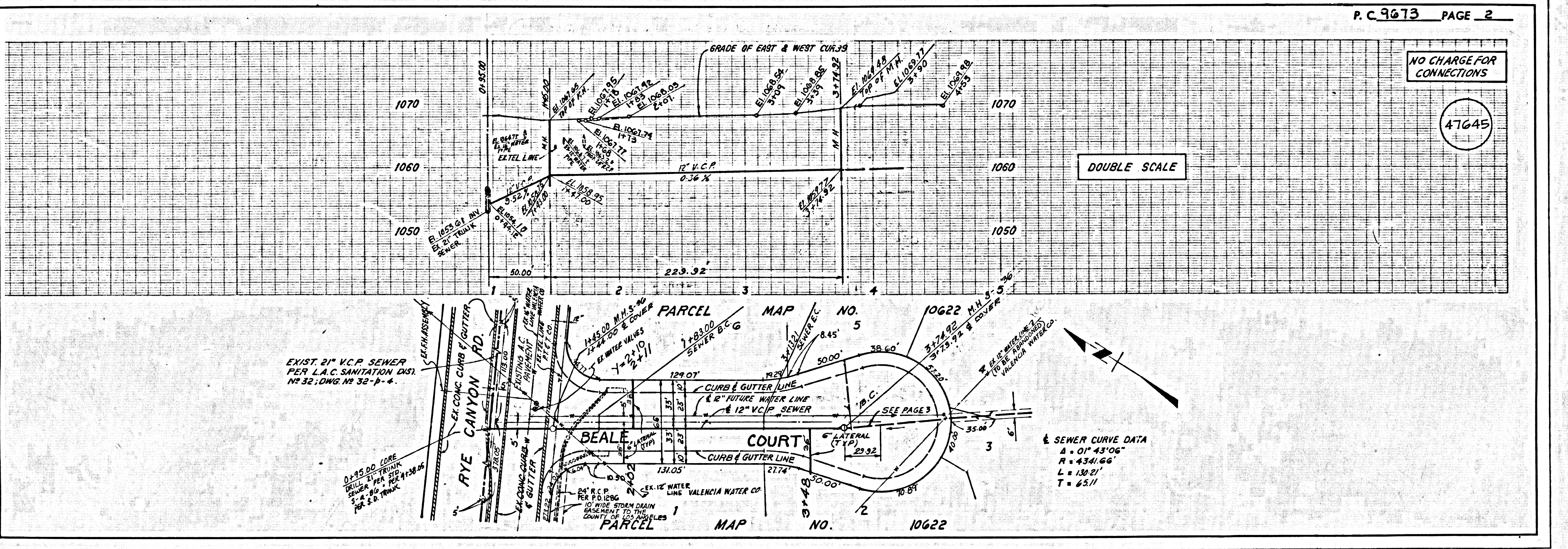
PROFILE, ALIGNMENT AND GRADE OF
SANITARY SEWERS PAGE 1
 TO BE CONSTRUCTED IN
PARCEL MAP NO. 10622
PRIVATE CONTRACT NO. 9673

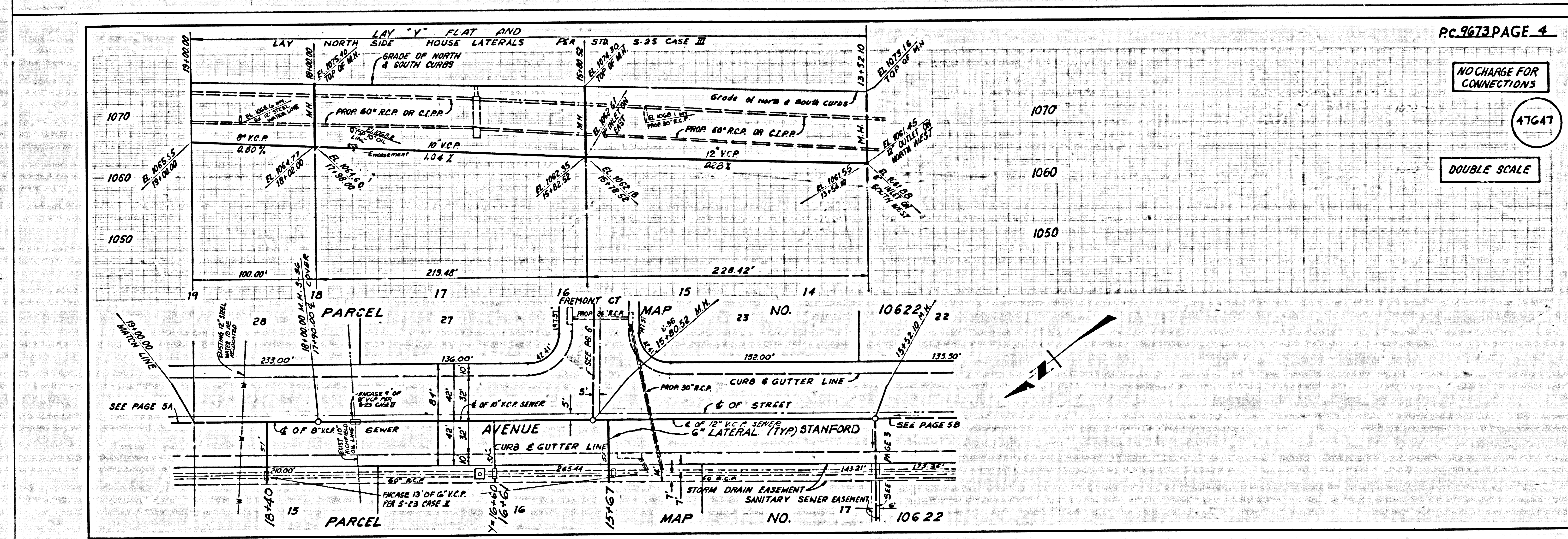
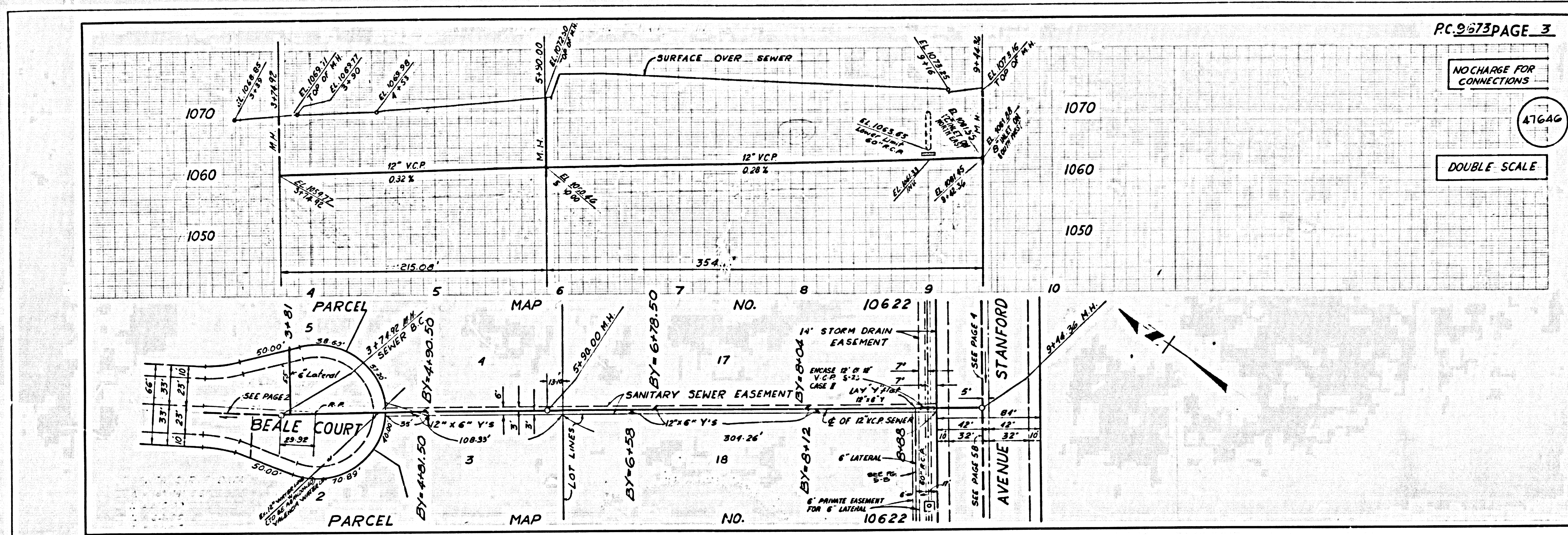
W.S. 63
 4 SHEETS, 0 PAGES
 SCALE: 1" = 8' MARCH 2, 1979
 PREPARED IN THE OFFICES OF
 SIKAND ENGINEERING ASSOCIATES
 15230 BURBANK BLVD.
 BURBANK, CALIFORNIA 91111 (213) 797-8550
 BY: *Newton C. Lemay*
 REG. C. E. No. 21823

THE FOLLOWING LATEST SEWER STANDARD PLANS ON FILE IN THE OFFICE OF THE COUNTY ENGINEER SHALL APPLY TO THE CONSTRUCTION OF THIS PROJECT:

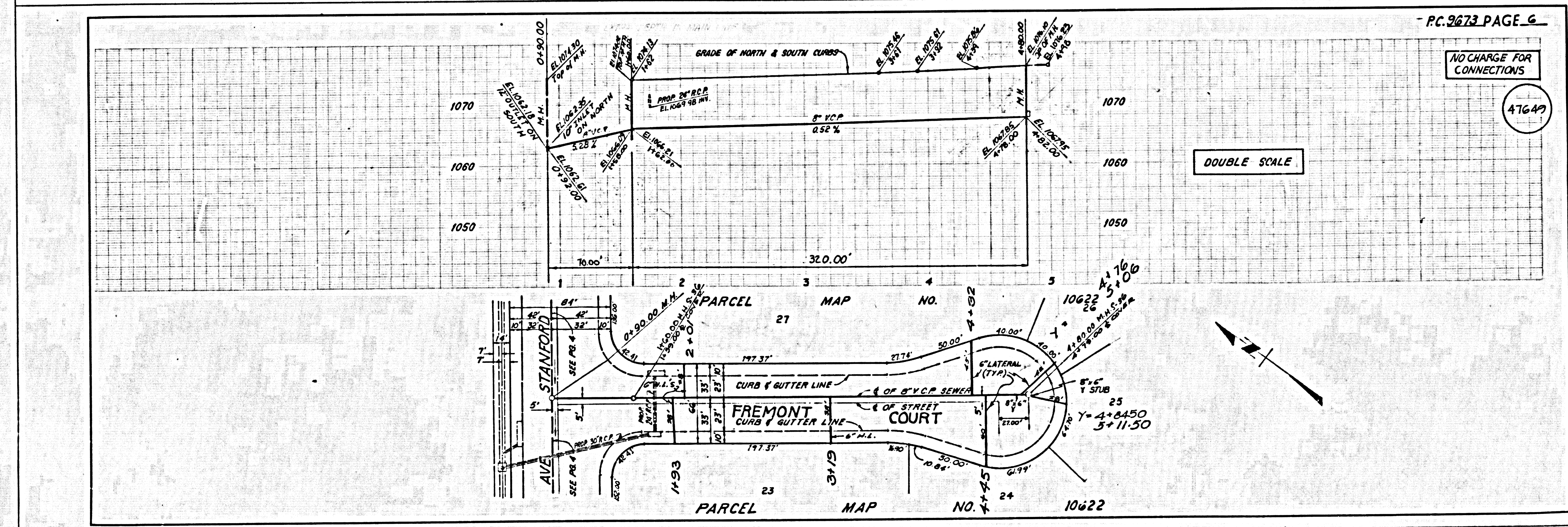
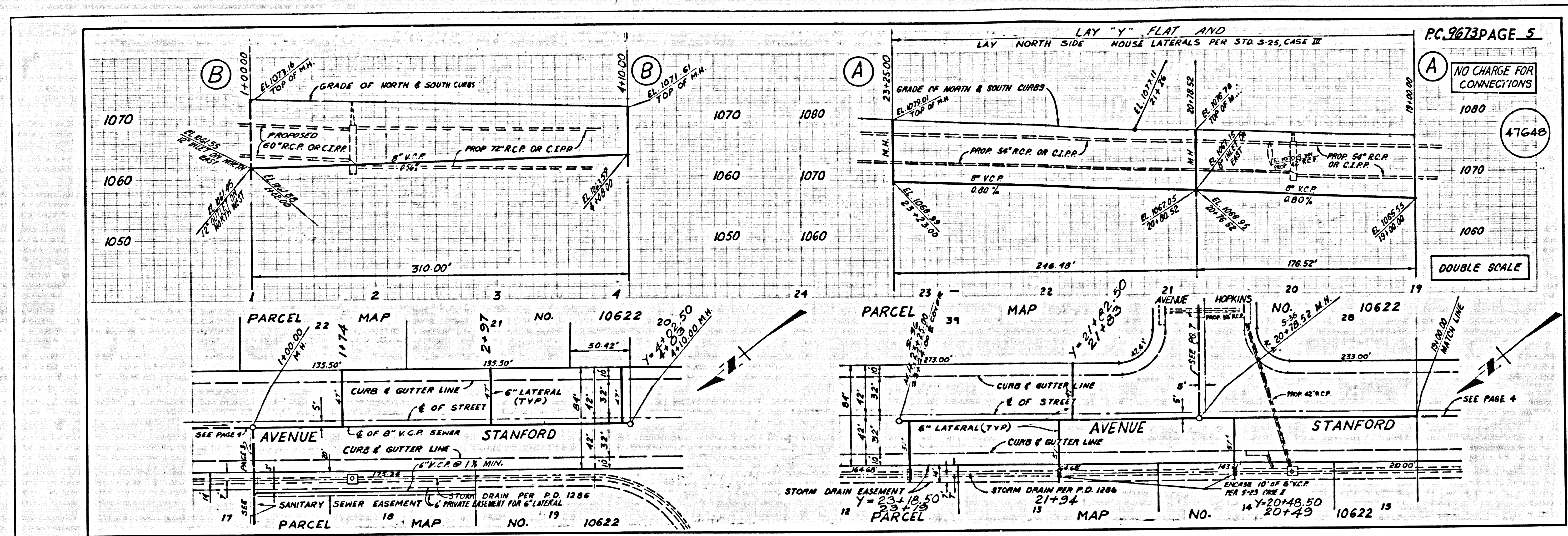
SEWER	8-1
SEWER PUBLIC SAFETY REQUIREMENTS	8-2
SEWER MANHOLE	8-3
SEWER MANHOLE EPP	8-4
SEWER FOR SEWER PIPE	8-5
SEWER AND ENCASING	8-6
TOP OF THE MANHOLE	8-7
ALLOWABLE TRENCH WIDTHS	8-8
SEWER MANHOLE RINGS AND COVERS	8-9
NON-REINFORCED PARCEL COVERS MANHOLE	8-10

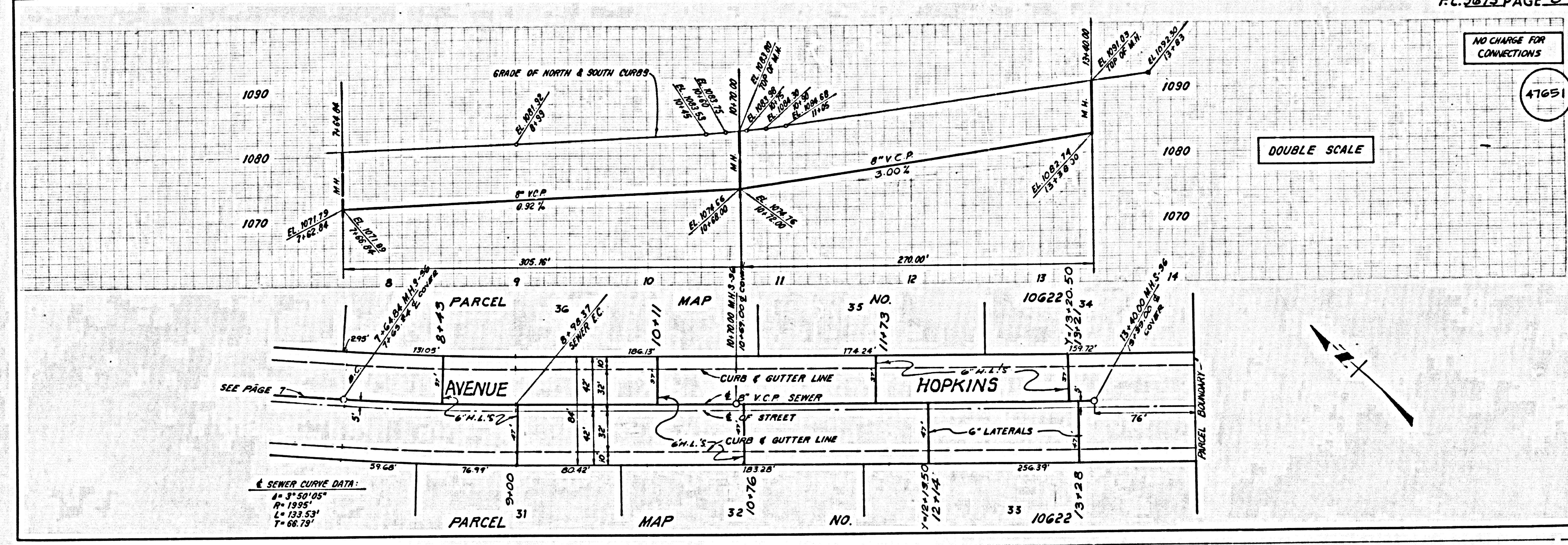
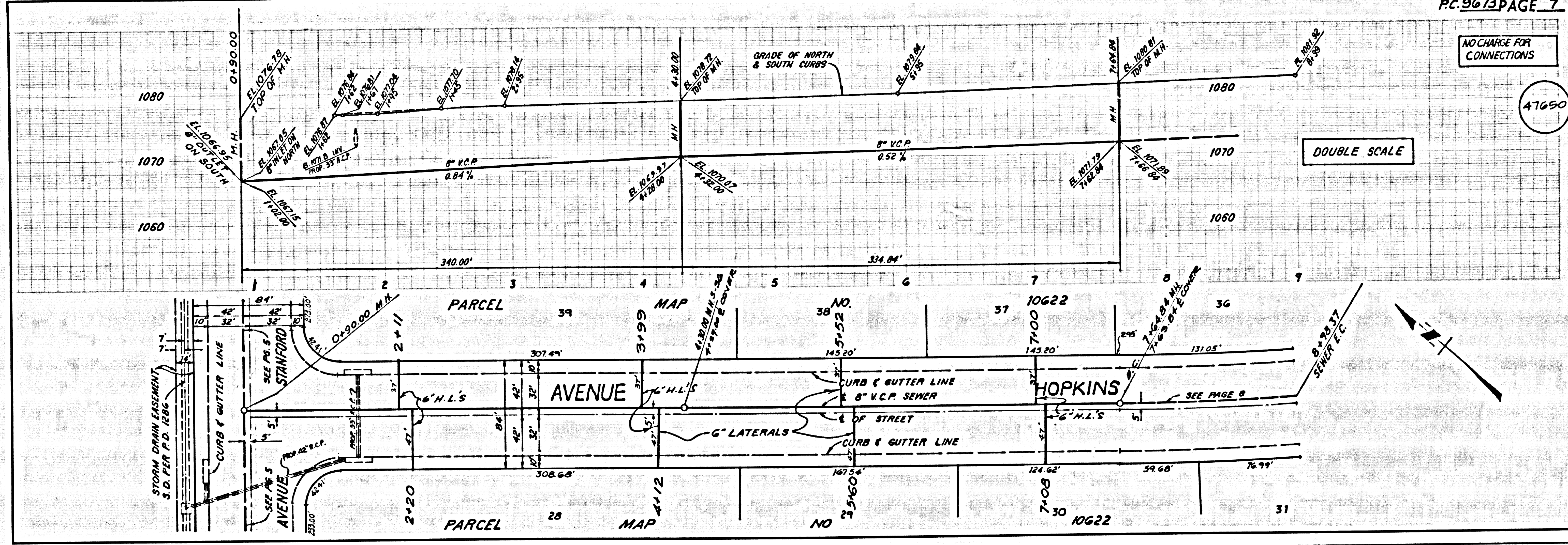
COUNTY OF LOS ANGELES, CALIFORNIA
 STEPHEN J. KOONCE, COUNTY ENGINEER WALTER E. GARRISON, CHIEF ENGINEER
 APPROVED: *Edmund J. Keigel* 10/15/79 APPROVED: *Franklin J. ...*
 CHECKED: *Edmund J. Keigel* 10/15/79
 REG. C. E. NO. 16583
 SANTA CLANTA VALLEY, BLDG. DIST. 82





L.A. COUNTY SEWER SHEET NO. 2 SOUTHERN CALIFORNIA BLUEPRINT CO. 3/58 418





SEWER CURVE DATA:
 A = 8° 50' 05"
 R = 1395'
 L = 133.53'
 T = 66.72'