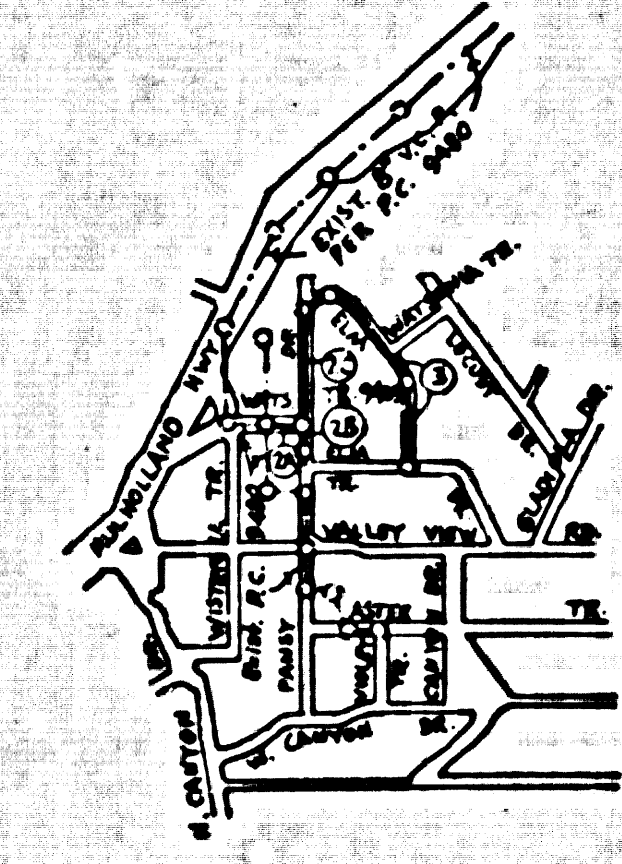
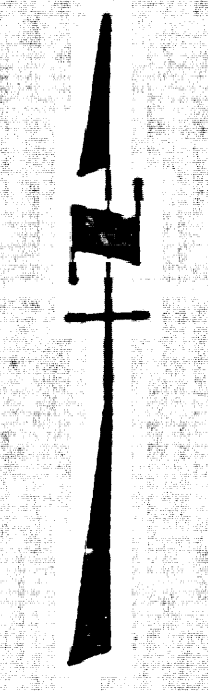


B.M. BY 9059 ELEV. 1282.901
 R.D.B.M. TAG IN N'LY END ROCK
 & CONC. HD.W.L. 15 FT. N. & 28 FT. E.
 INTER. MULHOLLAND HWY. &
 CANTON DR.
 MALIBU QUAD. 19 72

REVISION NO. 1 DATE 9-4-79
 Moved the last M.H. from 9+48.20
 to 9+48.20 Deleted 4" H.L. to Lot 12,
 Blk. 11, Tr. 9435, and replaced by 8" V.C.P.
 @ 4' from 8' Main on Elm Dr. Revised
 4" H.L. to Lots 10 & 13, Blk. 11, Tr. 9435.
 Approved *Ralph...*
 Date 9/14/79 P.C. 9480



INDEX MAP
 SCALE: 1"=500'
 P.C. NO. 9675

NOTE:
 NUMBERS IN CIRCLES
 INDICATE PAGE NUMBERS.

NOTE:
 ALLOW NO CONNECTIONS UNTIL
 P.C. 9480 IS ACCEPTED BY
 THE BOARD OF SUPERVISORS.

GENERAL NOTES:

1. ELEVATIONS ARE IN FEET ABOVE U.S.C. & G.S. SEA LEVEL DATUM OF 1929.
2. NO REVISIONS SHALL BE MADE IN THESE PLANS WITHOUT THE APPROVAL OF THE COUNTY ENGINEER.
3. NO REPRESENTATIVE OF THE COUNTY ENGINEER WILL SURVEY OR LAY OUT ANY PORTION OF THE WORK.
4. GRADES TO WHICH THIS IMPROVEMENT IS TO BE CONSTRUCTED ARE SHOWN ON PLANS AND PROFILES. STAKE POINTS FOR TOP OF CURB, CENTER LINE OF STREETS, OR CENTER LINE OF ALLEYS ARE SHOWN BY CIRCLES ON PROFILES. AT ALL POINTS BETWEEN DESIGNATED POINTS THE GRADE SHALL BE ESTABLISHED SO AS TO CONFORM TO A STRAIGHT LINE DRAWN BETWEEN SAID DESIGNATED POINTS.
5. THE PRIVATE ENGINEER SHALL FURNISH THE COUNTY ENGINEER WITH GRADE SHEETS AND STATIONING FOR ALL HOUSE LATERALS AND "T" OR "Y" BRANCHES AND SHALL PROVIDE STAKES FOR THEM AT THEIR PROPER LOCATIONS WITH STATIONING PLAINLY MARKED. ALL HOUSE LATERALS SHALL BE CONSTRUCTED IN A STRAIGHT ALIGNMENT AT RIGHT ANGLES FROM THE MAIN LINE SEWER EXCEPT AS SHOWN ON THE PLANS. HOUSE LATERALS FROM CHIMNEYS SHALL NOT HAVE AN ANGLE OF LESS THAN 45° WITH THE MAIN LINE SEWER. ANY CHANGE IN ALIGNMENT SHALL BE REQUESTED BY THE PRIVATE ENGINEER.
6. THE PRIVATE ENGINEER SHALL FURNISH THE HOUSE LATERAL DEPTH AT THE PROPERTY LINE BELOW THE TOP OF CURB ELEVATION FOR EACH HOUSE LATERAL ON THE GRADE SHEET.
7. BEFORE WORK CAN BE STARTED, THE CONTRACTOR MUST OBTAIN A PERMIT TO EXCAVATE IN COUNTY STREETS FROM THE L.A. COUNTY ROAD DEPT., DISTRICT OFFICE NO. 3, AND PAY A FEE TO THE COUNTY ENGINEER, AND J. VERMANT AND, L.A., REGIONAL OFFICE, TO COVER THE COST OF CONSTRUCTION INSPECTION AND RECORD PLANS.
8. IF WORK IS TO BE DONE IN A STATE HIGHWAY, A PERMIT MUST BE OBTAINED FROM THE STATE OF CALIFORNIA, DIVISION OF HIGHWAYS, 130 SOUTH SPRING STREET, LOS ANGELES, CALIFORNIA.
9. APPROVAL OF THIS PLAN BY THE COUNTY OF LOS ANGELES DOES NOT CONSTITUTE A REPRESENTATION AS TO THE ACCURACY OF THE LOCATION OF OR THE EXISTENCE OR NON-EXISTENCE OF ANY UNDERGROUND UTILITY PIPE, OR STRUCTURE WITHIN THE LIMITS OF THIS PROJECT. THIS NOTE APPLIES TO ALL PAGES.
10. REFER TO SECTION 7-10.4.1 OF THE STANDARD SPECIFICATIONS, REGARDING SAFETY ORDERS.
11. PRIOR TO THE ISSUANCE OF THE REQUIRED SEWER CONSTRUCTION PERMIT, THE CONTRACTOR SHALL OBTAIN AND FILE WITH THE COUNTY ENGINEER'S OFFICE A PERMIT TO EXCAVATE IN COUNTY STREETS FROM THE LOS ANGELES COUNTY ROAD DEPARTMENT, A PERMIT TO OBTAIN RIGHTS AND TRENCHES FROM THE STATE OF CALIFORNIA, DIVISION OF INDUSTRIAL SAFETY, AND A CERTIFICATE OF WORKER'S COMPENSATION INSURANCE WITH THE REGISTRATION OF COUNTY ENGINEER - J.B. VERMANT, ROOM 402, LOS ANGELES, CA 90010, MARKED AS THE CERTIFICATE HELD TO BE REVOKED 30 DAYS FROM THE CANCELLATION OF POLICY.

CONSTRUCTION NOTES:

1. WORK SHALL BE CONSTRUCTED ACCORDING TO THE STANDARD SPECIFICATIONS FOR PUBLIC WORKS CONSTRUCTION 1978 EDITION WITH "L.I.T.E." SUPPLEMENTS AND COUNTY ENGINEER'S SPECIAL PROVISIONS FOR THE CONSTRUCTION OF SANITARY SEWERS DATED 12-11-78, AND SHALL BE PROSECUTED ONLY IN THE PRESENCE OF THE COUNTY ENGINEER.
2. THE CONTRACTOR SHALL NOTIFY THE PUBLIC WORKS DIVISION BY TELEPHONE, (800) 738-2158, AT LEAST TWENTY-FOUR HOURS BEFORE STARTING ANY WORK UNDER THIS CONTRACT.
3. HOUSE LATERALS TO BE CONSTRUCTED WITH INVERTS AT PROPERTY LINE 6 FEET BELOW CURB GRADE EXCEPT AS NOTED.
4. "Y" OR "T" BRANCHES MAY BE USED FOR CONNECTIONS TO MANHOLE SERVICES EXCEPT AS NOTED.
5. ALL STRUCTURES SHALL BE OTHER THAN MAN HOLES PER 5-3 OR PRECAST CONCRETE MANHOLES PER 5-3A, EXCEPT AS NOTED.
6. PROVIDE STAKES ON THE PROPERTY LINE OR PROPERTY LINES PRODUCED AT RIGHT ANGLES TO THE SEWER LINE AT THE CENTER LINE OF EACH MANHOLE.
7. MANHOLE TOPS IN UNIMPROVED RIGHTS OF WAY TO BE SIX INCHES ABOVE FINISHED GRADE.
8. VITRIFIED CLAY PIPE JOINTS SHALL BE TYPE "B", "F", OR "G" PER STANDARD SPECIFICATIONS SECTION 306-2.
9. IF A POWER POLE IS WITHIN THREE FEET OF THE SEWER, THE SEWER SHALL BE ENCASED, PER 5-23, CASE II, TWO FEET ON EACH SIDE FROM THE POINT OF INTERFERENCE.
10. IF DURING THE COURSE OF CONSTRUCTION IT IS DETERMINED THAT THERE IS LESS THAN FOUR FEET OF COVER OVER THE TOP OF A MAIN LINE OR HOUSE LATERAL V.C.P. SEWER WHICH IS NOT INDICATED ON THE PLANS, THE PIPE SHALL BE ENCASED PER 5-23, CASE II UNLESS OTHERWISE APPROVED BY THE COUNTY ENGINEER.
11. ALL JOINTS BETWEEN CAST IRON PIPE AND VITRIFIED CLAY PIPE SHALL BE MADE WITH A RUBBER SLEEVE JOINT, TYPE "C" OR "D", FIFTH EDITION IF NECESSARY PER STANDARD SPECIFICATIONS, SECTION 306-3.
12. SEWERS TO BE TESTED FOR LEAKAGE PER SECTION 306-12.2 OF THE STANDARD SPECIFICATIONS AND SPECIAL PROVISIONS.
13. RESURFACE ALL TRENCHES WITHIN PAVED AREAS TO MEET L.A. COUNTY ROAD DEPT. OR CALIFORNIA STATE HIGHWAY REQUIREMENTS IN ACCORDANCE WITH PERMITS.
14. FULL COMPLIANCE WITH SECTION 306-12.8 OF THE SPECIAL PROVISIONS WILL BE PROVIDED FOR BACKFILL IN STREETS. CERTIFICATION OF BACKFILL COMPACTION AND SAND EQUIVALENTS BY A QUALIFIED, REGISTERED TESTING LABORATORY SHALL BE PROVIDED BY THE PERMITTEE PRIOR TO THE ISSUANCE OF A CERTIFICATE OF PARTIAL ACCEPTANCE.

TO BE CONSTRUCTED IN
ELM DRIVE, ET. AL.
 PRIVATE CONTRACT NO. 9675

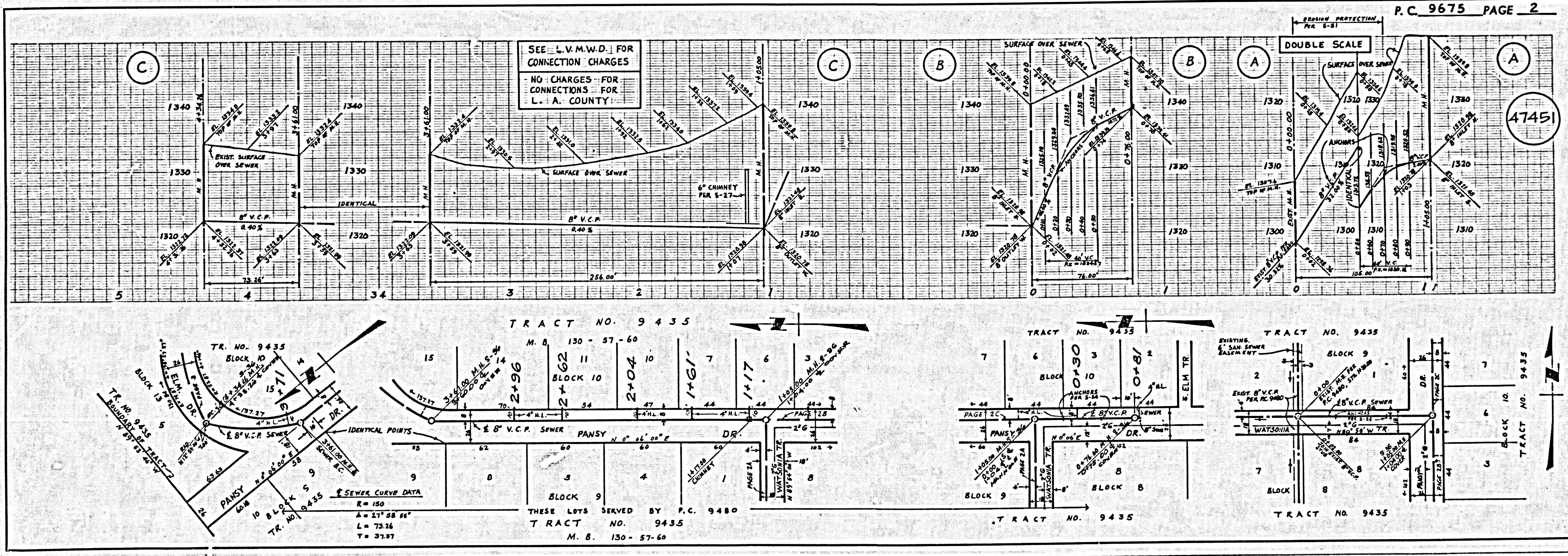
W.S. 89, A-1
 2 SHEETS, 3 PAGES
 SCALE: VERT. 1"=4' HORIZ. 1"=40'
 JUNE, 1979
 PREPARED IN THE OFFICES OF
 GOODLAND ENGINEERING
 2555 PHOENIX STREET, WOODLAND HILLS, CA 91367
 (213) 340-3113
 BY: *Carl W. P...*
 REG. C. E. No. 18254

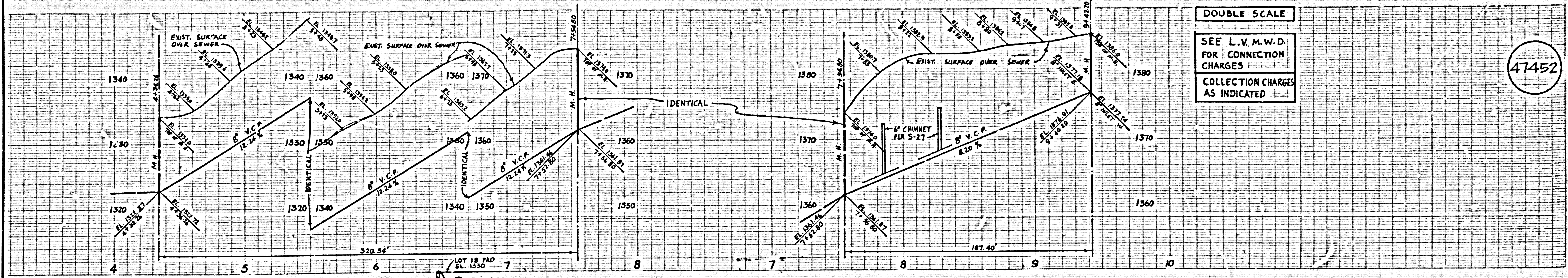
47450

THE FOLLOWING LATEST REVISED STANDARD PLANS ON FILE IN THE OFFICE OF THE COUNTY ENGINEER SHALL APPLY IN THE CONSTRUCTION OF THIS PROJECT:

MINIMUM PUBLIC SAFETY REQUIREMENTS	5-1
SEWER MANHOLE	5-2
STANDARD MANHOLE STEP	5-7
BEDDING FOR SEWER PIPE	5-8
WRAP OF THE SURFACE	5-20
ALLOWABLE TRENCH WIDTHS	5-28
LOCKING MANHOLE FRAMES AND COVERS	5-30
NON-REINFORCED PRECAST CONCRETE MANHOLE	5-36
CHIMNEY PIPE AND BASE	5-116
EROSION PROTECTION IN STEEP SLOPES	5-131

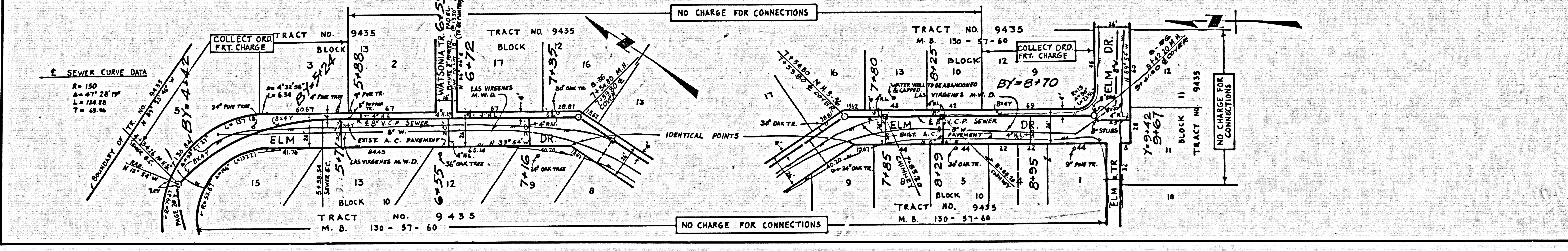
COUNTY OF LOS ANGELES, CALIFORNIA
 STEPHEN J. KODACEY, COUNTY ENGINEER LAS VIRGENES MUNICIPAL WATER DIST.
 APPROVED *Carl W. P...* 7/13/79 APPROVED *Carl W. P...*
 CHECKED *Bruce D. Valdez* 7/13/79
 M.R. C.E. NO. 10653
 CALABASAS BLDG. DIST. 9.1





DOUBLE SCALE
 SEE L.V.M.W.D.
 FOR CONNECTION
 CHARGES
 COLLECTION CHARGES
 AS INDICATED

47452



SEWER CURVE DATA
 R = 150
 A = 47° 28' 19"
 L = 124.28
 T = 65.94

NO CHARGE FOR CONNECTIONS

NO CHARGE FOR CONNECTIONS

NO CHARGE FOR CONNECTIONS