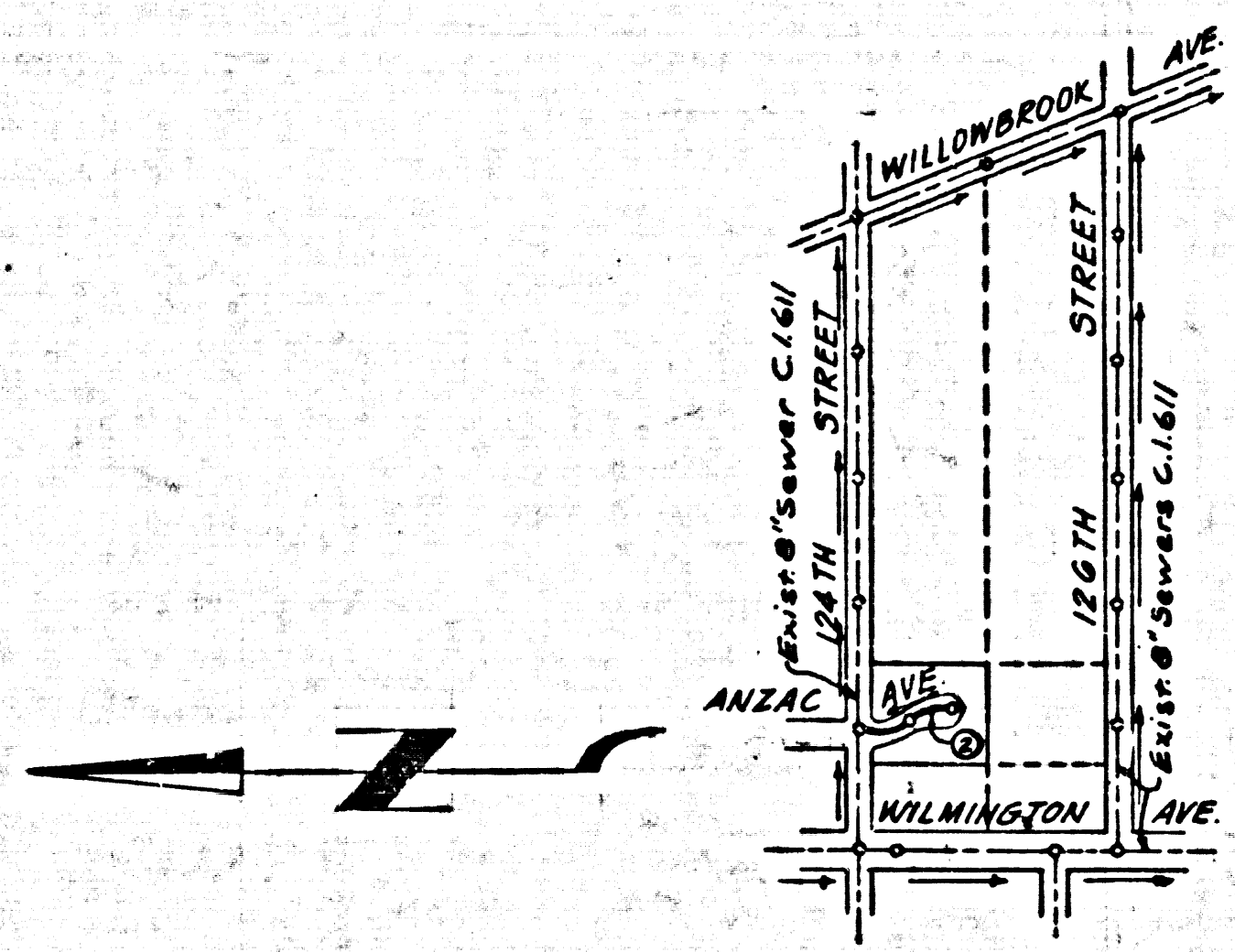


B.M. C.Y. 8003 ELEV. 85.348
 LET IN E. CB 42 FT N + 40 FTE. C/L
 INT WILMINGTON AVE. + 123 RD. ST.
 WATTS QUAD. 19 75.

NOTE:
 Number in circle indicates page number



INDEX MAP
 P.C. 9678
 Scale: 1" = 600'
 Tract No. 34843

NO CONNECTION FOR THE DISPOSAL OF INDUSTRIAL WASTES
 SHALL BE MADE TO SEWERS SHOWN ON THESE PLANS UNLESS
 A PERMIT FOR INDUSTRIAL WASTE WATER DISCHARGE HAS BEEN
 ISSUED BY THE SANITATION DISTRICTS FOR SAID CONNECTION.

BEFORE BREAKING INTO OR CONSTRUCTION ON A COUNTY
 SANITATION DISTRICT CURB AND GUTTER TO FINAL ACCEPTANCE
 OF THE PROJECT SANITATION DISTRICT INSPECTOR SHALL BE
 NOTIFIED BY PHONE OR IN WRITING THAT REQUIRED INSPECTION
 CAN BE MADE.

NOTE:
 Lots 1, 2, 4, 11 served by exist. H.L.s in 124th St, C.I. 611.

- GENERAL NOTES:**
- ELEVATIONS ARE IN FEET ABOVE U.S.C. & G.S. SEA LEVEL DATUM OF 1929.
 - NO REVISIONS SHALL BE MADE IN THESE PLANS WITHOUT THE APPROVAL OF THE COUNTY ENGINEER.
 - NO REPRESENTATIVE OF THE COUNTY ENGINEER WILL SURVEY OR LAY OUT ANY PORTION OF THE WORK.
 - GRADES TO WHICH THIS IMPROVEMENT IS TO BE CONSTRUCTED ARE SHOWN ON PLANS AND PROFILES. GRADE POINTS FOR TOP OF CURBS, CENTER LINE OF STREETS, OR CENTER LINE OF ALLEYS ARE SHOWN BY CIRCLES ON PROFILES. AT ALL POINTS BETWEEN DESIGNATED POINTS THE GRADE SHALL BE ESTABLISHED SO AS TO CONFORM TO A STRAIGHT LINE DRAWN BETWEEN SAID DESIGNATED POINTS.
 - THE PRIVATE ENGINEER SHALL FURNISH THE COUNTY ENGINEER WITH GRADE SHEETS AND STATIONING FOR ALL HOUSE LATERALS AND "T" OR "Y" BRANCHES AND SHALL PROVIDE STAKES FOR THEM AT THEIR PROPER LOCATIONS WITH STATIONING PLAINLY MARKED. ALL HOUSE LATERALS SHALL BE CONSTRUCTED IN A STRAIGHT ALIGNMENT AT RIGHT ANGLES FROM THE MAIN LINE SEWER EXCEPT AS SHOWN ON THE PLANS. HOUSE LATERALS FROM CHIMNEYS SHALL NOT HAVE AN ANGLE OF LESS THAN 45° WITH THE MAIN LINE SEWER. ANY CHANGE IN ALIGNMENT SHALL BE REQUESTED IN WRITING BY THE PRIVATE ENGINEER.
 - THE PRIVATE ENGINEER SHALL FURNISH THE HOUSE LATERAL DEPTH AT THE PROPERTY LINE BELOW THE TOP OF CURB ELEVATION FOR EACH HOUSE LATERAL ON THE GRADE SHEET.
 - BEFORE WORK CAN BE STARTED, THE CONTRACTOR MUST OBTAIN A PERMIT TO EXCAVATE IN COUNTY STREETS FROM THE L.A. COUNTY ROAD DEPT., DISTRICT OFFICE NO. 4 AND PAY A FEE TO THE COUNTY ENGINEER, 550 S. VERMONT, ROOM 406, LOS ANGELES, TO COVER THE COST OF CONSTRUCTION INSPECTION AND RECORD PLANS.
 - IF WORK IS TO BE DONE IN A STATE HIGHWAY, A PERMIT MUST BE OBTAINED FROM THE STATE OF CALIFORNIA, DIVISION OF HIGHWAYS, 120 SOUTH SPRING STREET, LOS ANGELES, CALIFORNIA.
 - APPROVAL OF THIS PLAN BY THE COUNTY OF LOS ANGELES DOES NOT CONSTITUTE A REPRESENTATION AS TO THE ACCURACY OF THE LOCATION OF OR THE EXISTENCE OR NON-EXISTENCE OF ANY UNDERGROUND UTILITY PIPE, OR STRUCTURE WITHIN THE LIMITS OF THIS PROJECT. THIS NOTE APPLIES TO ALL PAGES.
 - REFER TO SECTION 51841 OF THE STANDARD SPECIFICATIONS, REGARDING SAFETY CORDS.
 - PRIOR TO THE ISSUANCE OF THE REQUIRED SEWER CONSTRUCTION PERMIT, THE CONTRACTOR SHALL OBTAIN AND FILE WITH THE COUNTY ENGINEER COPIES OF A PERMIT TO EXCAVATE IN COUNTY STREETS FROM THE LOS ANGELES COUNTY ROAD DEPARTMENT A PERMIT FOR EXCAVATIONS AND TRENCHES FROM THE STATE OF CALIFORNIA, DIVISION OF INDUSTRIAL SAFETY AND A CERTIFICATE OF WORKERS COMPENSATION INSURANCE WITH THE DEPARTMENT OF COUNTY ENGINEER, 550 SOUTH VERMONT, LOS ANGELES, CALIFORNIA, 90058, HANDED AS THE CERTIFICATE HOLDER TO BE NOTIFIED 10 DAYS BEFORE CANCELLATION OF POLICY.

- CONSTRUCTION NOTES:**
- WORK SHALL BE CONSTRUCTED ACCORDING TO THE STANDARD SPECIFICATIONS FOR PUBLIC WORKS CONSTRUCTION 1976 EDITION WITH 1977 SUPPLEMENTS AND COUNTY ENGINEER SPECIAL PROVISIONS FOR THE CONSTRUCTION OF SANITARY SEWERS DATED 8/22/77, 12/78, AND SHALL BE MODIFIED ONLY IN THE PRESENCE OF THE COUNTY ENGINEER.
 - THE CONTRACTOR SHALL NOTIFY THE CONSTRUCTION DIVISION BY TELEPHONE 833-7348-3156, AT LEAST TWENTY-FOUR HOURS BEFORE STARTING ANY WORK UNDER THIS CONTRACT.
 - HOUSE LATERALS TO BE CONSTRUCTED WITH INVERTS AT PROPERTY LINE & FIVE FEET BELOW CURB GRADE EXCEPT AS NOTED.
 - WYE OR THE BRANCHES MAY BE USED FOR CONNECTIONS TO BRANCHING SEWERS EXCEPT AS NOTED.
 - ALL STRUCTURES SHALL BE EITHER BRICK MANHOLES PER 5-34 OR PRECAST CONCRETE MANHOLES PER 5-34, EXCEPT AS NOTED.
 - PROVIDE STAKES ON THE PROPERTY LINE OR PROPERTY LINES PRODUCE AT RIGHT ANGLES TO THE SEWER LINE AT THE CENTER LINE OF EACH MANHOLE.
 - MANHOLE TOPS IN UNIMPROVED PORTS OF WAY TO BE SIX INCHES ABOVE FINISHED GRADE.
 - VERTICAL CURB AND JOINTS SHALL BE 1/4" "T", "F", OR "D" PER STANDARD SPECIFICATIONS SECTION 306-2.
 - IF A POWER POLE IS WITHIN THREE FEET OF THE SEWER, THE SEWER SHALL BE ENCASED, PER 5-34, CASE 2, TWO FEET ON EACH SIDE FROM THE POINT OF INTERFERENCE.
 - IF DURING THE COURSE OF CONSTRUCTION IT IS DETERMINED THAT THERE IS LESS THAN FOUR FEET OF COVER OVER THE TOP OF A MAIN LINE OF HOUSE LATERAL, V.C.P. SEWERS WHICH IS NOT INDICATED ON THE PLANS, THE PIPE SHALL BE ENCASED PER 5-34, CASE 2, UNLESS OTHERWISE APPROVED BY THE COUNTY ENGINEER.
 - ALL JOINTS BETWEEN CAST IRON PIPE AND VITRIFIED CLAY PIPE SHALL BE MADE WITH A RUBBER JOINT JOINT, TYPE "C" OR "D", WITH BEARING IF NECESSARY PER STANDARD SPECIFICATIONS, SECTION 306-2.
 - SEWERS TO BE TESTED FOR LEAKAGE PER SECTION 306-7.6 OF THE STANDARD SPECIFICATIONS AND SPECIAL PROVISIONS.
 - RESURFACE ALL TRENCHES WITHIN PAVED AREAS TO MEET L.A. COUNTY ROAD DEPT. OR CALIFORNIA STATE HIGHWAY REQUIREMENTS IN ACCORDANCE WITH PERMITS.
 - PILE COMPLIANCE WITH SECTION 306-7.5 OF THE SPECIAL PROVISIONS WILL BE REQUIRED FOR BACKFILL IN STREETS. CERTIFICATION OF BACKFILL COMPACTION AND SAND EQUIVALENTS BY A QUALIFIED, REGISTERED TESTING LABORATORY SHALL BE PROVIDED BY THE PERMITTEE PRIOR TO THE ISSUANCE OF A CERTIFICATE OF PARTIAL ACCEPTANCE.

PROFILE, ALIGNMENT AND GRADE OF
SANITARY SEWERS PAGE 1
 TO BE CONSTRUCTED IN
TRACT NO. 34843

PRIVATE CONTRACT NO. 9678

W.S. 26
 1 SHEET, 2 PAGES
 SCALE: VERT. 1" = 4'
 HORIZ. 1" = 40'
 AUGUST, 1977
 PREPARED IN THE OFFICES OF
 JOHN D. ABELL
 5650 E. BEVERLY BLVD.
 LOS ANGELES, CA 90028
 (213) 753-5812
 BY: John D. Abell
 REG. C. E. No. 9070

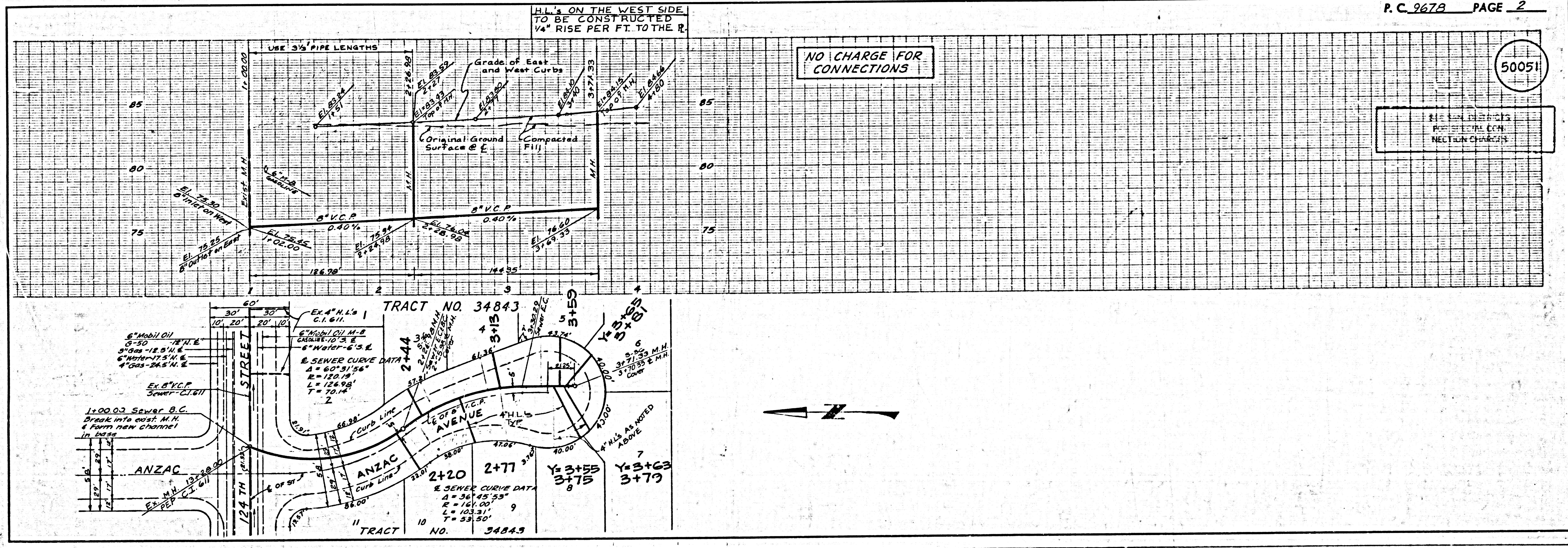
50050

THE FOLLOWING LISTED SPECIAL STANDARD PLANS ON FILE IN THE OFFICE OF THE COUNTY ENGINEER SHALL APPLY IN THE CONSTRUCTION OF THIS PROJECT:

SEWER	5-1
MINIMUM PUBLIC SAFETY REQUIREMENTS	5-2
BRICK MANHOLE	5-3
STANDARD MANHOLE TOP	5-7
SEEDING FOR SEWER PIPE	5-8
CHALKING AND INCARCERATION	5-9
WYE OR THE BRANCH	5-10
ALLOWABLE TRENCH WIDTHS	5-11
LOADING MANHOLE FRAME AND COVER	5-12
NON-REINFORCED PRECAST CONCRETE MANHOLE	5-13
BREAKING INTO EXISTING BRICK MANHOLE	5-17

COUNTY OF LOS ANGELES, CALIFORNIA
 STEPHEN J. HOONCE, COUNTY ENGINEER WALTER E. GARRISON, CHIEF ENGINEER
 APPROVED: Gordon W. King 9/25/77 APPROVED: Frank R. ... 9/27/77
 PERSONAL INCHARGE OFFICE ENGINEER
 CHECKED: Ralph ... 9/27/77
 BLDG. C.E. NO. 16783
 FIRESTONE BLDG. DIST. 1
 SEE SAN DISTRICTS FOR SPECIAL CONDITIONS CHANGES

P.C. 9678 PAGE 2



NO CHARGE FOR CONNECTIONS

50051

SEE SAN DISTRICTS FOR SPECIAL CONDITIONS CHANGES