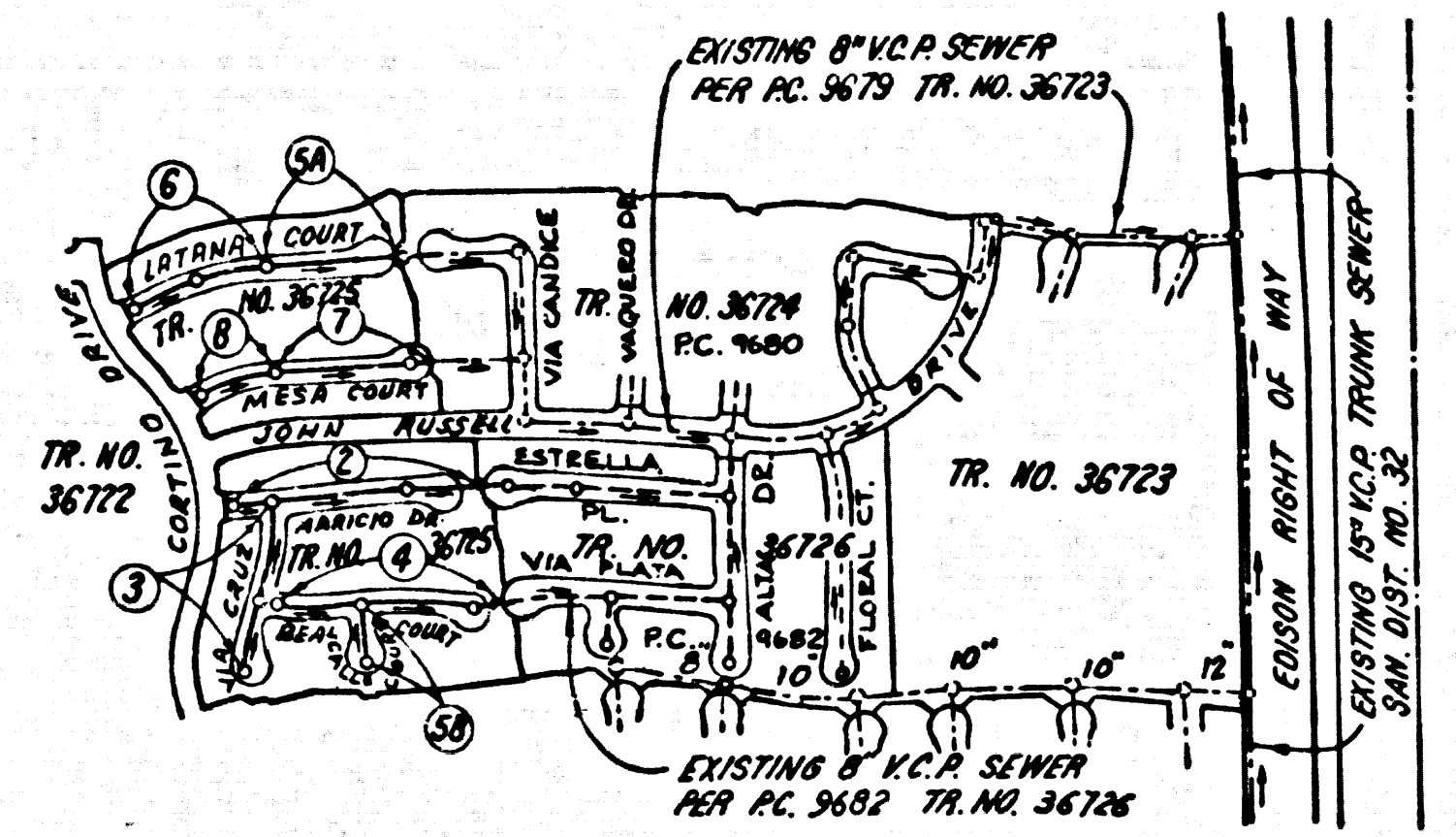


B.M. BL 4236 ELEV. 1211.232
 R.D. B.M. TAG M. CB. AVENIDA NAVARRE
 77 E + 30 N/O INT. MCBERN PKWY.
 @ N.E. COR.
 NEWHALL QUAD. 19.22



INDEX MAP
 SCALE: 1"=600'
 P.C. 9681
 TRACT NO. 36725
 NOTE: NUMBERS IN CIRCLES
 INDICATE PAGE NUMBERS

ISSUE NO HOUSE CONNECTION
 PERMIT UNTIL P.C. 9674-6
 9680 TRACT NO'S 36723 & 36724
 ARE ACCEPTED.

NO CONNECTION FOR THE DISPOSAL OF INDUSTRIAL WASTES
 SHALL BE MADE TO SEWERS SHOWN ON THESE DRAWINGS UNTIL
 A PERMIT FOR INDUSTRIAL WASTE WATER DISCHARGE HAS BEEN
 ISSUED BY THE SANITATION DISTRICTS FOR SAID CONNECTION.

BEFORE BREAKING INTO OR CONSTRUCTION ON A COUNTY
 SANITATION DISTRICT SEWER AND PRIOR TO FINAL ACCEPTANCE
 OF THE PROJECT SANITATION DISTRICT INSPECTOR SHALL BE
 NOTIFIED BY PHONE 262-8650 SO THAT REQUIRED INSPECTION
 CAN BE MADE.

GENERAL NOTES:

- ELEVATIONS ARE IN FEET ABOVE U.S.C. & G.S. SEA LEVEL DATUM OF 1929.
- NO REVISIONS SHALL BE MADE IN THESE PLANS WITHOUT THE APPROVAL OF THE COUNTY ENGINEER.
- NO REPRESENTATIVE OF THE COUNTY ENGINEER WILL SURVEY OR LAY OUT ANY PORTION OF THE WORK.
- GRADES TO WHICH THIS IMPROVEMENT IS TO BE CONSTRUCTED ARE SHOWN ON PLANS AND PROFILES. GRADE POINTS FOR TOP OF CURBS, CENTER LINE OF STREETS, OR CENTER LINE OF ALLEYS ARE SHOWN BY CIRCLES ON PROFILES AT ALL POINTS BETWEEN DESIGNATED POINTS THE GRADE SHALL BE ESTABLISHED SO AS TO CONFORM TO A STRAIGHT LINE DRAWN BETWEEN SAID DESIGNATED POINTS.
- THE PRIVATE ENGINEER SHALL FURNISH THE COUNTY ENGINEER WITH GRADE SHEETS AND STATIONING FOR ALL HOUSE LATERALS AND "T" OR "Y" BRANCHES AND SHALL PROVIDE STAKES FOR THEM AT THEIR PROPER LOCATIONS WITH STATIONING PLAINLY MARKED. ALL HOUSE LATERALS SHALL BE CONSTRUCTED IN A STRAIGHT ALIGNMENT AT RIGHT ANGLES FROM THE MAIN LINE SEWER EXCEPT AS SHOWN ON THE PLANS. HOUSE LATERALS FROM CHIMNEYS SHALL NOT HAVE AN ANGLE OF LESS THAN 45° WITH THE MAIN LINE SEWER. ANY CHANGE IN ALIGNMENT SHALL BE REQUESTED IN WRITING BY THE PRIVATE ENGINEER.
- THE PRIVATE ENGINEER SHALL FURNISH THE HOUSE LATERAL DEPTH AT THE PROPERTY LINE BELOW THE TOP OF CURB ELEVATION FOR EACH HOUSE LATERAL ON THE GRADE SHEET.
- BEFORE WORK CAN BE STARTED, THE CONTRACTOR MUST OBTAIN A PERMIT TO EXCAVATE IN COUNTY STREETS FROM THE L.A. COUNTY ROAD DEPT., DISTRICT OFFICE NO. 5 AND PAY A FEE TO THE COUNTY ENGINEER, 550 E. VERMONT, LOS ANGELES, CALIF. TO COVER THE COST OF CONSTRUCTION INSPECTION AND RECORD PLANS.
- IF WORK IS TO BE DONE IN A BAYE HIGHWAY, A PERMIT MUST BE OBTAINED FROM THE STATE OF CALIFORNIA, DIVISION OF HIGHWAYS, 120 SOUTH SPRING STREET, LOS ANGELES, CALIFORNIA.
- APPROVAL OF THIS PLAN BY THE COUNTY OF LOS ANGELES DOES NOT CONSTITUTE A REPRESENTATION AS TO THE ACCURACY OF THE LOCATION OF OR THE EXISTENCE OR NON-EXISTENCE OF ANY UNDERGROUND UTILITY PIPE, OR STRUCTURE WITHIN THE LIMITS OF THIS PROJECT. THE NOTE APPLIES TO ALL PAGES.
- REFER TO SECTION 516.4.1 OF THE STANDARD SPECIFICATIONS, REGARDING SAFETY CORDS.
- PRIOR TO THE ISSUANCE OF THE REQUIRED SEWER CONSTRUCTION PERMIT, THE CONTRACTOR SHALL OBTAIN AND FILE WITH THE COUNTY ENGINEER COPIES OF A PERMIT TO EXCAVATE IN COUNTY STREETS FROM THE LOS ANGELES COUNTY ROAD DEPARTMENT, A PERMIT FOR EXCAVATIONS AND TRENCHES FROM THE STATE OF CALIFORNIA, DIVISION OF INDUSTRIAL SAFETY AND A CERTIFICATE OF WORKER'S COMPENSATION INSURANCE WITH THE DEPARTMENT OF COUNTY ENGINEER, 550 SOUTH VERMONT, LOS ANGELES, CALIFORNIA 90050, MARKED IN THE CERTIFICATE HOLDER TO BE NOTIFIED IN DATE PRIOR TO CANCELLATION OF POLICY.

CONSTRUCTION NOTES:

- WORK SHALL BE CONSTRUCTED ACCORDING TO THE STANDARD SPECIFICATIONS FOR PUBLIC WORKS CONSTRUCTION (1979) EDITION WITH SUPPLEMENTS AND COUNTY ENGINEER SPECIAL PROVISIONS FOR THE CONSTRUCTION OF SANITARY SEWERS DATED SEPTEMBER 1979 AND SHALL BE PROSECUTED ONLY IN THE PRESENCE OF THE COUNTY ENGINEER.
- THE CONTRACTOR SHALL NOTIFY THE ENVIRONMENTAL DEVELOPMENT DIVISION (212) 576-1288 AT LEAST TWENTY-FOUR HOURS BEFORE STARTING ANY WORK UNDER THIS CONTRACT.
- HOUSE LATERALS TO BE CONSTRUCTED WITH INVERTS AT PROPERTY LINE & FEET BELOW CURB GRADE EXCEPT AS NOTED.
- WYE OR TEE BRANCHES MAY BE USED FOR CONNECTIONS TO MANHOLE BETWEEN EXCEPT AS NOTED.
- ALL STRUCTURES SHALL BE EITHER BRICK MANHOLES PER 5-5 OR REINFORCED CONCRETE MANHOLES PER 5-26, EXCEPT AS NOTED.
- PROVIDE STAKES ON THE PROPERTY LINE OR PROPERTY LINES PRODUCED AT RIGHT ANGLES TO THE SEWER LINE AT THE CENTER LINE OF EACH MANHOLE.
- MANHOLE TOPS IN UNIMPROVED RIGHTS OF WAY TO BE SIX INCHES ABOVE FINISHED GRADE.
- VERTICAL CLAY PIPE JOINTS SHALL BE TYPE "C", "D" OR "E" PER STANDARD SPECIFICATIONS SECTION 200-2.
- IF A POWER POLE IS WITHIN THREE FEET OF THE SEWER, THE SEWER SHALL BE ENCASED, PER 5-23, CASE B, TWO FEET ON EACH SIDE FROM THE POINT OF INTERFERENCE.
- IF DURING THE COURSE OF CONSTRUCTION IT IS DETERMINED THAT THERE IS LESS THAN FOUR FEET OF COVER OVER THE TOP OF A MAIN LINE OR HOUSE LATERAL V.C.P. SEWER WHICH IS NOT INDICATED ON THE PLANS, THE PIPE SHALL BE ENCASED PER 5-23, CASE B UNLESS OTHERWISE APPROVED BY THE COUNTY ENGINEER.
- ALL JOINTS BETWEEN CAST IRON PIPE AND VITRIFIED CLAY PIPE SHALL BE MADE WITH A RUBBER GASKET JOINT, TYPE "C" OR "D", WITH THE GASKET OF HEAVY DUTY PER STANDARD SPECIFICATIONS, SECTION 200-2.
- SEWERS TO BE TESTED FOR LEAKAGE PER SECTION 200-1.6 OF THE STANDARD SPECIFICATIONS AND SPECIAL PROVISIONS.
- RESURFACE ALL TRENCHES WITHIN PAVED AREAS TO MEET L.A. COUNTY ROAD DEPT. OR CALIFORNIA STATE HIGHWAY REQUIREMENTS IN ACCORDANCE WITH PERMITS.
- FULL COMPLIANCE WITH SECTION 506.1.6.2 OF THE SPECIAL PROVISIONS WILL BE REQUIRED FOR BACKFILL IN STREETS. CERTIFICATION OF BACKFILL COMPACTION AND SAND EQUIVALENTS BY A QUALIFIED, REGISTERED TESTING LABORATORY SHALL BE PROVIDED BY THE PERMITTEE PRIOR TO THE ISSUANCE OF A CERTIFICATE OF PARTIAL ACCEPTANCE.
- SPECIAL BACKFILL IN UNIMPROVED CONSTRUCTION:
 A BACKFILL TRENCH AND EXPOSED OTHER PARTS, SO AS TO ACHIEVE THE NATURAL OR FINISHED GRADES AND SLOPES SHOWN ON THE GRADING PLAN APPROVED FOR THE BUILDING AND SAFETY DIVISION.
 ALL BACKFILL SHALL BE COMPACTED TO A MINIMUM OF 90% OF MAXIMUM DENSITY PER ASTM STANDARD METHOD OF TEST D1557-75. MODIFIED ACCEPTANCE CERTIFICATION OF SUCH CONSTRUCTION SHALL BE SUBMITTED TO THE ENVIRONMENTAL DEVELOPMENT DIVISION.

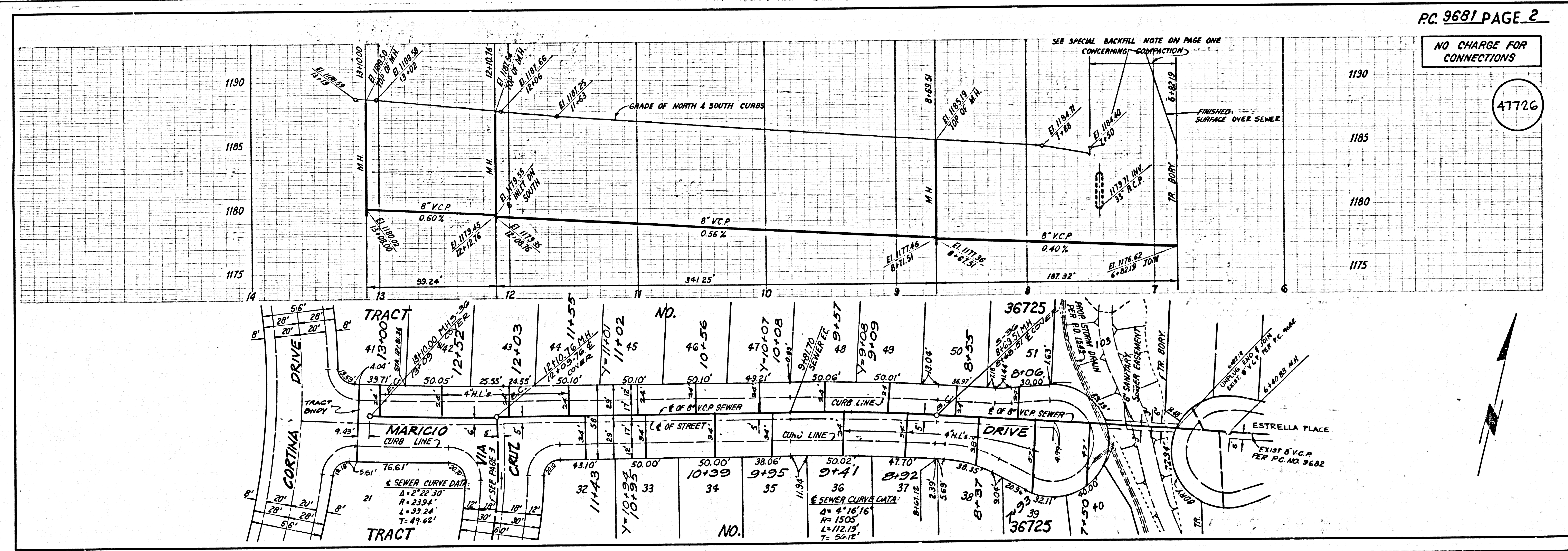
PROFILE, ALIGNMENT AND GRADE OF
SANITARY SEWERS PAGE 1
 TO BE CONSTRUCTED IN
TRACT NO. 36725
PRIVATE CONTRACT NO. 9681

W.S. 62
 4 SHEETS, 8 PAGES
 SCALE: VERT. 1"=4'
 HORIZ. 1"=40'
 MARCH 8, 1979
 PREPARED IN THE OFFICES OF
 SIKAND ENGINEERING ASSOCIATES
 15230 BURBANK BLVD., VAN NUYS
 CALIFORNIA 91411 (213) 787-8550
 BY: Naveeh C. K...
 REG. C. E. No. 21893

THE FOLLOWING LATEST REVISED STANDARD PLANS ON FILE IN THE OFFICE OF THE COUNTY ENGINEER SHALL APPLY IN THE CONSTRUCTION OF THE PROJECT:

SEWER	5-1
MINIMUM PUBLIC SAFETY REQUIREMENTS	5-2
BRICK MANHOLE	5-3
STANDARD MANHOLE RISE	5-7
STAKING FOR SEWER PIPE	5-21
CLAYING AND ENCASEMENT	5-26
WYE OR TEE SUPPORT	5-28
ALUMINUM TRENCH SHIELD	5-28
LOCKING MANHOLE FRAME AND COVER	5-28
NON-SPECIFIED PRECAST CONCRETE MANHOLES	5-28

COUNTY OF LOS ANGELES, CALIFORNIA
 STEPHEN J. ROOYCE, COUNTY ENGINEER WALTER E. GARRISON, CHIEF ENGINEER
 APPROVED: [Signature] 2-13-80 APPROVED: [Signature] 2/19/80
 CHECKED: [Signature] 2/1/80
 REG. C.E. NO. 16883
 SANTA CLARITA BLDG. DIST. 82



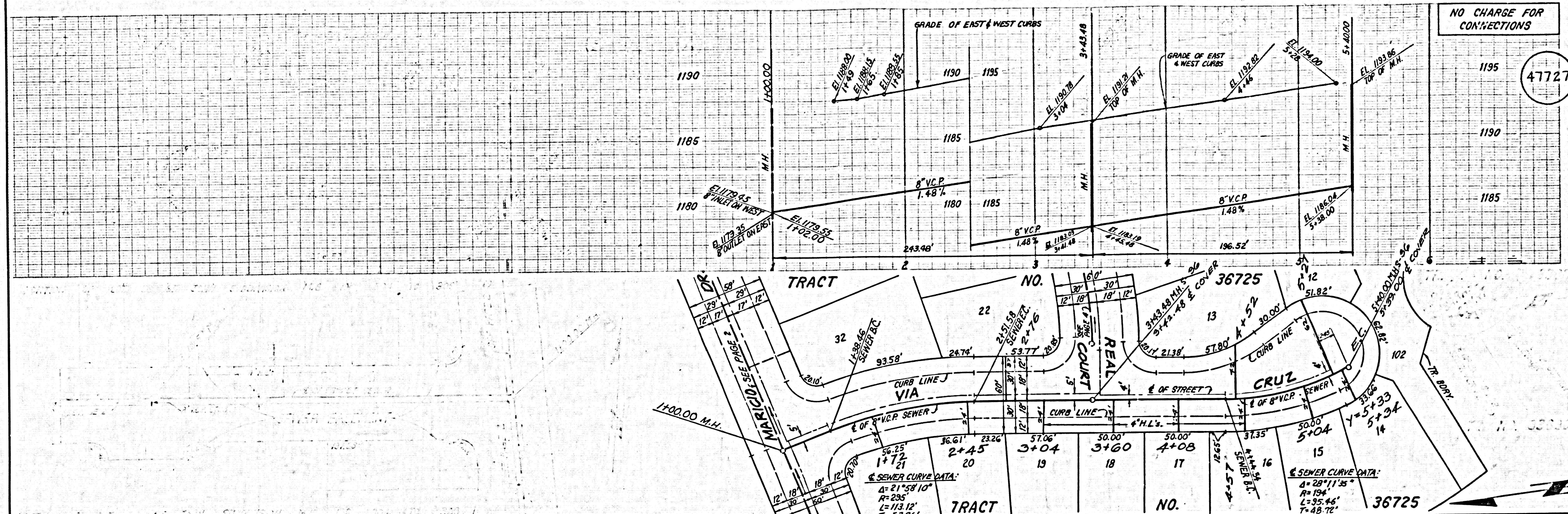
P.C. 9681 PAGE 2

NO CHARGE FOR CONNECTIONS

47726

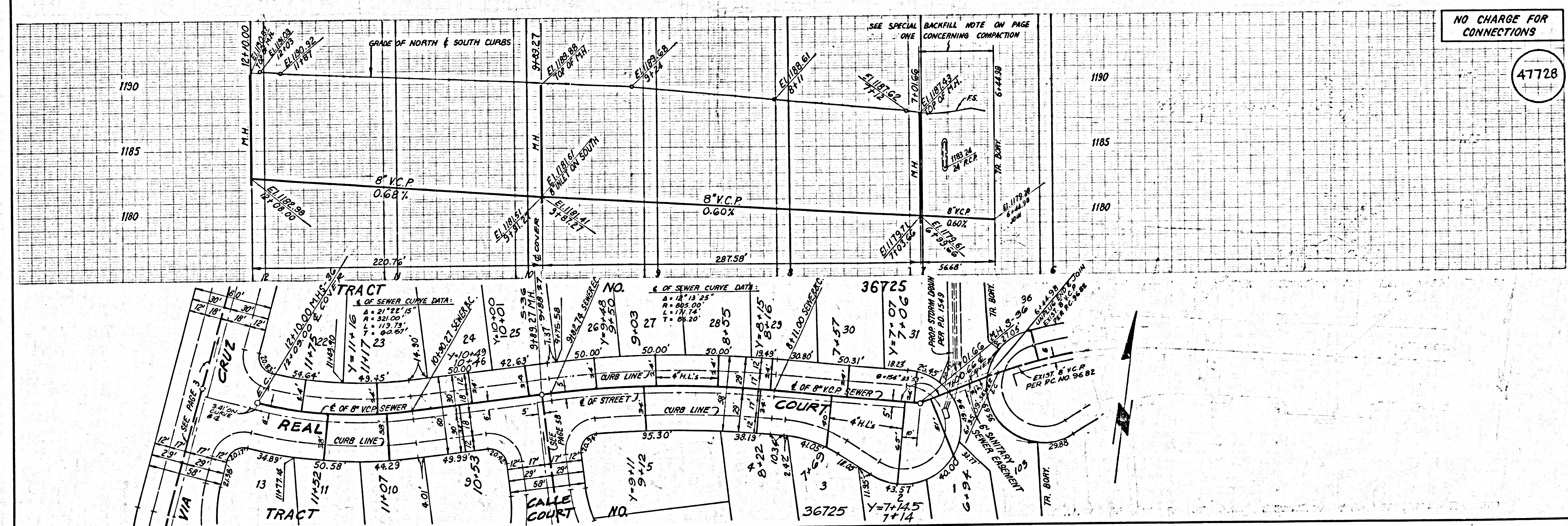
NO CHARGE FOR CONNECTIONS

47727



NO CHARGE FOR CONNECTIONS

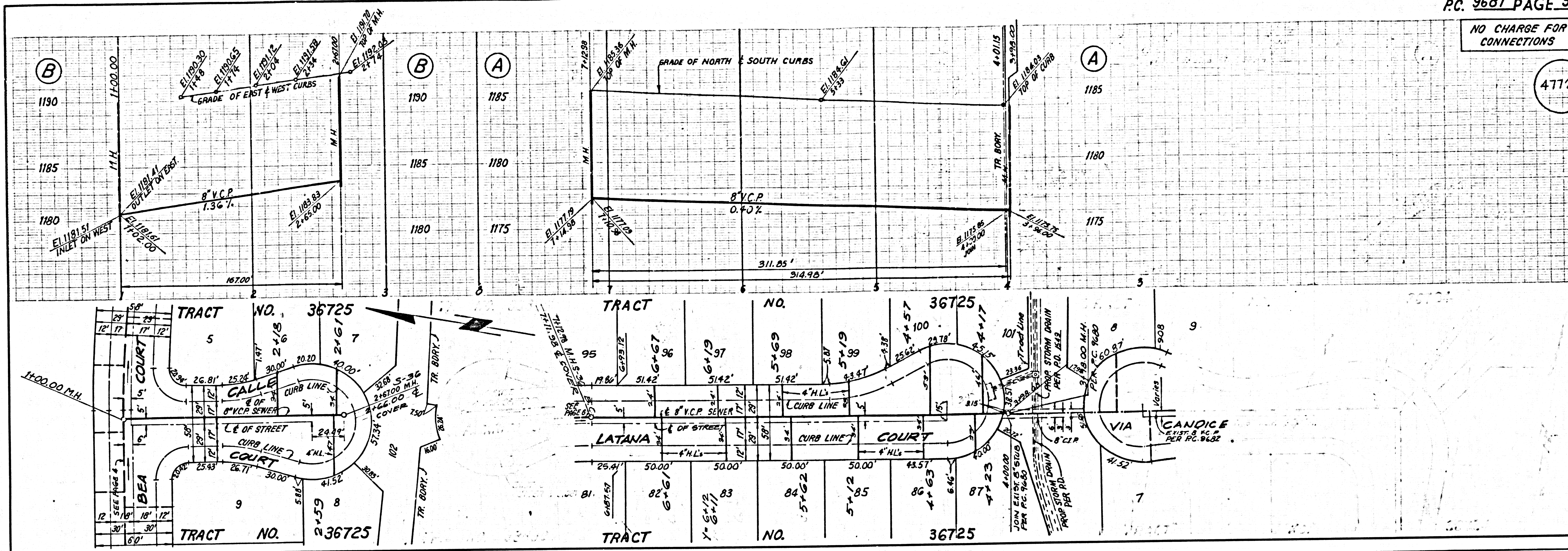
47728



5 1888 39

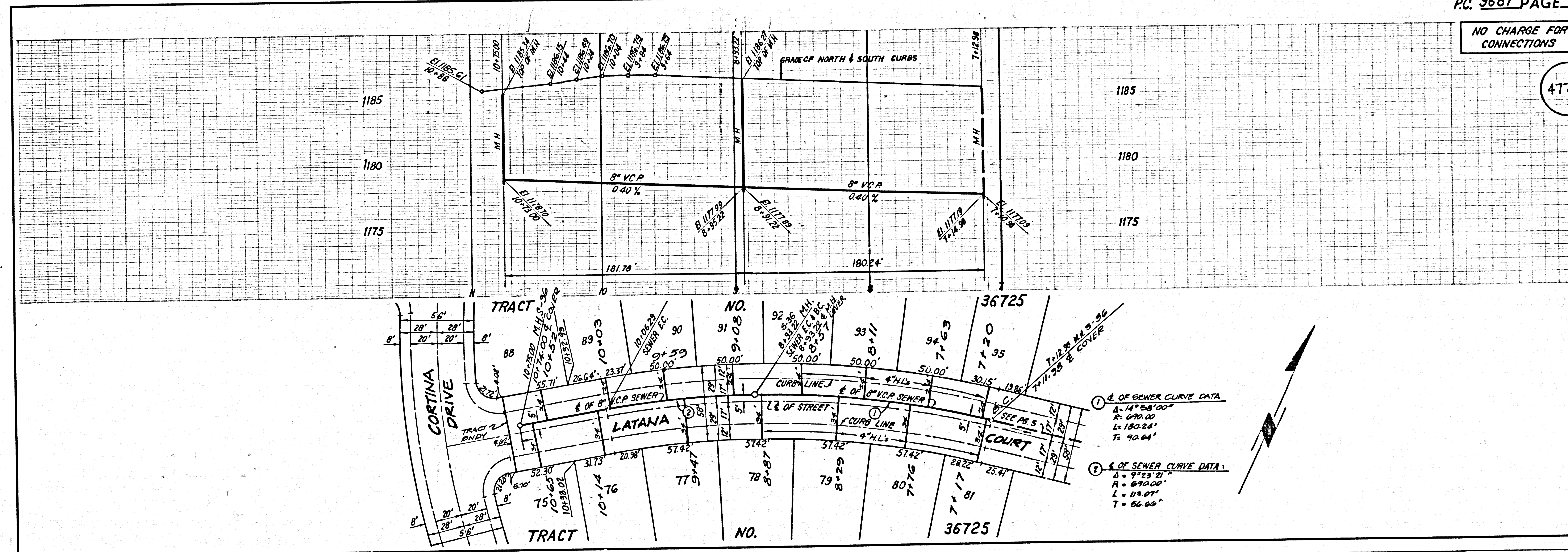
NO CHARGE FOR CONNECTIONS

47129



NO CHARGE FOR CONNECTIONS

47130

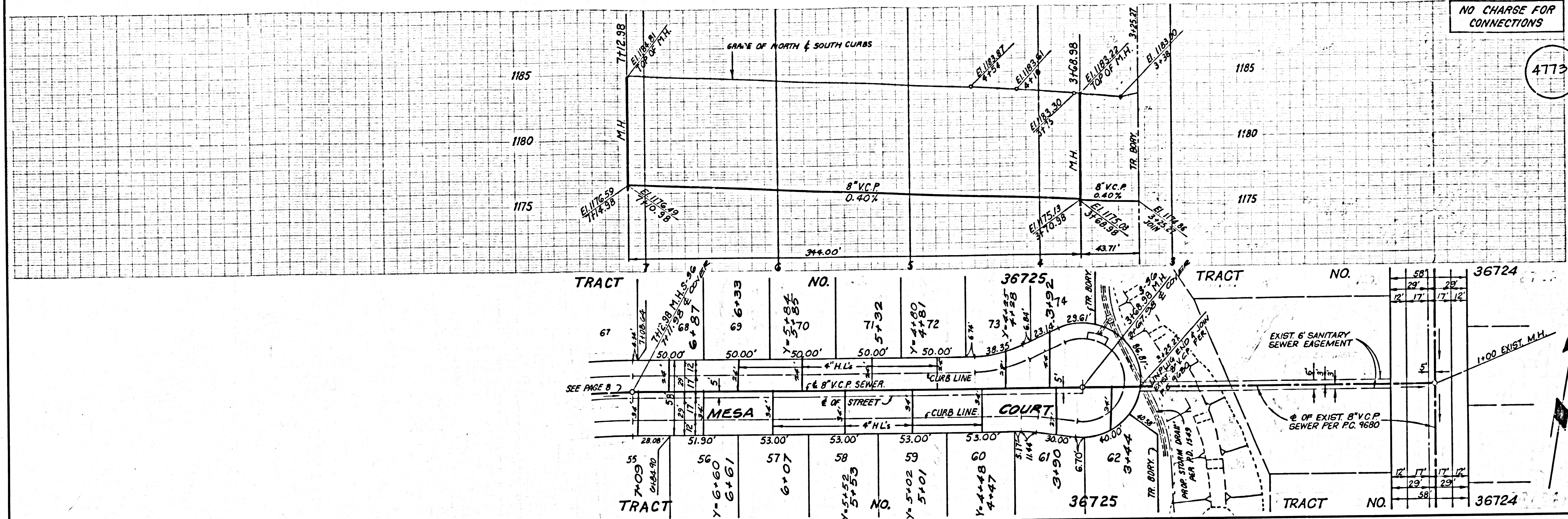


- ① & OF SEWER CURVE DATA
 R = 117.50'
 L = 180.24'
 T = 90.04'
- ② & OF SEWER CURVE DATA
 R = 69.00'
 L = 119.07'
 T = 86.66'

1886 3

NO CHARGE FOR CONNECTIONS

47731



1822 29

NO CHARGE FOR CONNECTIONS

47732

