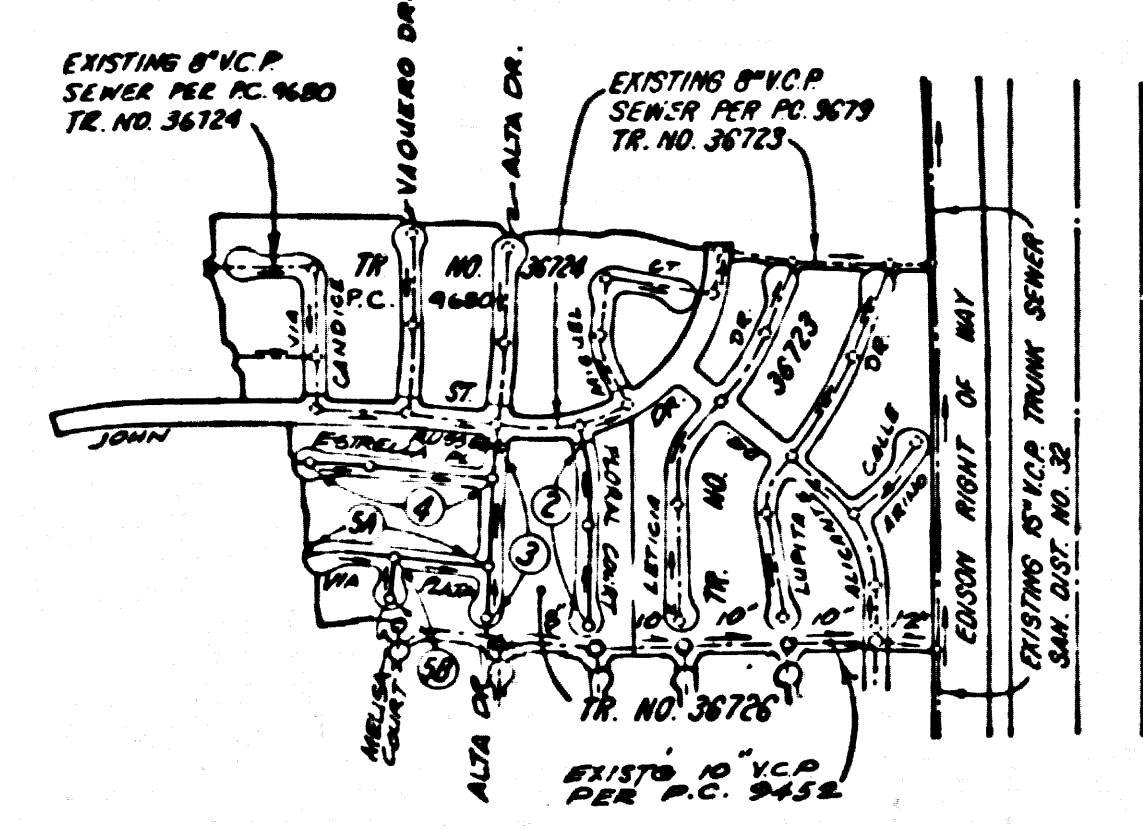


B.M. 81 4236 ELEV. 121.232
 RD. SAN TAG N. CA AVENIDA NAVARRÉ
 775.30 N/O INT. MC BEAN PKWY
 @ ME COR.
 NEHWALL QUAD. 19.72



INDEX MAP
 SCALE: 1"=600'
 P.C. 9682
 TRACT NO. 36726

NOTE: NUMBERS IN CIRCLES INDICATE PAGE NUMBERS

NO REVISION FOR THE DISPOSAL OF INDUSTRIAL WASTE
 SHALL BE MADE TO THESE PLANS OR THE ENGINEER'S SEAL.
 A PERMIT FOR INDUSTRIAL WASTE DISCHARGE FOR USE BY
 SHOWN BY THE SANITATION DISTRICTS AND CONNECTION
 WITH THE CITY OF LOS ANGELES WATER DEPARTMENT.
 THESE PLANS DO NOT CONSTITUTE A REPRESENTATION AS TO THE ACCURACY OF THE LOCATION OF OR THE EXISTENCE OR NON-EXISTENCE OF ANY UNDERGROUND UTILITY PIPE, OR STRUCTURE WITHIN THE LIMITS OF THIS PROJECT. THE USER ASSUMES ALL RISKS.

GENERAL NOTES:

1. ELEVATIONS ARE IN FEET ABOVE U.S.C. & G.S. SEA LEVEL DATUM OF 1929.
2. NO REVISIONS SHALL BE MADE IN THESE PLANS WITHOUT THE APPROVAL OF THE COUNTY ENGINEER.
3. NO REPRESENTATIVE OF THE COUNTY ENGINEER WILL BE AT THE JOB AT ANY PORTION OF THE WORK.
4. GRADES TO WHICH THE IMPROVEMENT IS TO BE CONSTRUCTED ARE SHOWN ON PLANS AND PROFILES. GRADE POINTS FOR TOP OF CURBS, CENTER LINE OF STREETS, OR CENTER LINE OF ALLEYS ARE SHOWN BY CIRCLES ON PROFILES. AT ALL POINTS BETWEEN INDICATED POINTS THE GRADE SHALL BE ESTABLISHED SO AS TO CONFORM TO A STRAIGHT LINE DRAWN BETWEEN SAID INDICATED POINTS.
5. THE PRIVATE ENGINEER SHALL FURNISH THE COUNTY ENGINEER WITH GRADE SHEETS AND STATIONING FOR ALL HOUSE LATERALS AND "T" OR "T" BRANCHES AND SHALL NUMBER STAKES FOR THEM AT THEIR PROPER LOCATIONS WITH STATIONING PLAINLY MARKED. ALL HOUSE LATERALS SHALL BE CONSTRUCTED IN A STRAIGHT ALIGNMENT AT RIGHT ANGLES FROM THE MAIN LINE SEWER EXCEPT AS SHOWN ON THE PLANS. HOUSE LATERALS FROM CHIMNEYS SHALL NOT HAVE AN ANGLE OF LESS THAN 45° WITH THE MAIN LINE SEWER, AND CHANGES IN ALIGNMENT SHALL BE REQUESTED BY THE PRIVATE ENGINEER.
6. THE PRIVATE ENGINEER SHALL FURNISH THE HOUSE LATERAL DEPTH AT THE PROPERTY LINE AND SHOW THE TOP OF CURB RELATION FOR EACH HOUSE LATERAL ON THE GRADE SHEET.
7. BEFORE WORK CAN BE STARTED, THE CONTRACTOR MUST OBTAIN A PERMIT TO EXCAVATE IN COUNTY STREETS FROM THE L.A. COUNTY ROAD DEPT., DISTRICT OFFICE NO. 5, AND PAY A FEE TO THE COUNTY ENGINEER, 350 S. WENDUIT, LOS ANGELES, CALIF. 90012, TO COVER THE COST OF CONSTRUCTION INSPECTION AND RECORD PLANS.
8. IF WORK IS TO BE DONE IN A STATE HIGHWAY, A PERMIT MUST BE OBTAINED FROM THE STATE OF CALIFORNIA, DIVISION OF HIGHWAYS, 126 SOUTH SPRING STREET, LOS ANGELES, CALIFORNIA.
9. APPROVAL OF THIS PLAN BY THE COUNTY OF LOS ANGELES DOES NOT CONSTITUTE A REPRESENTATION AS TO THE ACCURACY OF THE LOCATION OF OR THE EXISTENCE OR NON-EXISTENCE OF ANY UNDERGROUND UTILITY PIPE, OR STRUCTURE WITHIN THE LIMITS OF THIS PROJECT. THE USER ASSUMES ALL RISKS.
10. REFER TO SECTION 7.0.4.1 OF THE STANDARD SPECIFICATIONS, REGARDING SAFETY DEVICES.
11. THE CONTRACTOR SHALL BE RESPONSIBLE FOR THE PROTECTION OF ALL EXISTING UTILITIES AND STRUCTURES. THE CONTRACTOR SHALL OBTAIN AND MAINTAIN THE COUNTY ENGINEER'S OFFICE OF A PERMIT TO EXCAVATE IN COUNTY STREETS FROM THE L.A. COUNTY ROAD DEPARTMENT, A PERMIT FOR EXCAVATION AND RECORD PLANS FROM THE STATE OF CALIFORNIA, DIVISION OF HIGHWAYS, SAFETY AND A CERTIFICATE OF WORKER'S COMPENSATION INSURANCE WITH THE DEPARTMENT OF COUNTY ENGINEER'S SIGNATURE. SIGNATURE AND ADDRESS: CALIFORNIA BOARD OF PROFESSIONAL ENGINEERS, 1101 N. LOS ANGELES STREET, LOS ANGELES, CALIFORNIA 90012. THESE PLANS DO NOT CONSTITUTE A REPRESENTATION AS TO THE ACCURACY OF THE LOCATION OF OR THE EXISTENCE OR NON-EXISTENCE OF ANY UNDERGROUND UTILITY PIPE, OR STRUCTURE WITHIN THE LIMITS OF THIS PROJECT. THE USER ASSUMES ALL RISKS.

CONSTRUCTION NOTES:

1. WORK SHALL BE CONSTRUCTED ACCORDING TO THE STANDARD SPECIFICATIONS FOR PUBLIC WORKS CONSTRUCTION 1975 EDITION WITH THE SUPPLEMENT AND COUNTY ENGINEER SPECIAL PROVISIONS FOR THE CONSTRUCTION OF SANITARY SEWERS DATED 10/15/79. THE CONTRACTOR SHALL BE RESPONSIBLE FOR THE PROTECTION OF ALL EXISTING UTILITIES AND STRUCTURES.
2. THE CONTRACTOR SHALL NOTIFY THE SANITATION DISTRICTS AND THE COUNTY ENGINEER AT LEAST TWENTY-FOUR HOURS BEFORE STARTING ANY WORK UNDER THIS CONTRACT.
3. HOUSE LATERALS TO BE CONSTRUCTED WITH BRICKS AT PROPERTY LINE AND A FEET SHOW CURB GRADE EXCEPT AS NOTED.
4. WYE OR TEE BRANCHES MAY BE USED FOR CONNECTIONS TO MAINLINE SEWERS EXCEPT AS NOTED.
5. ALL STRUCTURES SHALL BE SET BY THE COUNTY ENGINEER PER 314 OF THE STANDARD SPECIFICATIONS AND SPECIAL PROVISIONS.
6. PROVIDE BASES ON THE PROPERTY LINE OR PROPERTY LINE PROLONGED AT RIGHT ANGLES TO THE SEWER LINE AT THE CENTER LINE OF EACH MANHOLE.
7. MANHOLES FOR BRICKWORK SHOULD BE SET TO BE SIX INCHES ABOVE FINISHED GRADE.
8. WEATHER CLAY PIPE JOINTS SHALL BE TYPE "F", "P", OR "S" PER STANDARD SPECIFICATIONS SECTION 306.3.
9. IF A POWER POLE IS WITHIN THREE FEET OF THE SEWER, THE SEWER SHALL BE ENCASED PER 313.4.2 CASE B, TWO FEET ON EACH SIDE FROM THE POINT OF INTERFERENCE.
10. IF DURING THE COURSE OF CONSTRUCTION IT IS DETERMINED THAT THERE IS LESS THAN FOUR FEET OF COVER OVER THE TOP OF A MAIN LINE OR HOUSE LATERAL C.P. SEWER WHICH IS NOT INDICATED ON THE PLANS, THE PIPE SHALL BE ENCASED PER 313.4.2 CASE B UNLESS OTHERWISE APPROVED BY THE COUNTY ENGINEER.
11. ALL JOINTS BETWEEN CAST IRON PIPE AND WEATHER CLAY PIPE SHALL BE MADE WITH A RUBBER GLEYS JOINT, TYPE "C" OR "D", WITH BRASSING IF NECESSARY PER STANDARD SPECIFICATIONS, SECTION 306.3.
12. SEWERS TO BE TESTED FOR LEAKAGE PER SECTION 306.1.6 OF THE STANDARD SPECIFICATIONS AND SPECIAL PROVISIONS.
13. BRICKWORK SHALL BE CONSTRUCTED WITH BRICKS TO MEET L.A. COUNTY ROAD DEPT. OF CALIFORNIA STATE HIGHWAY REQUIREMENTS IN ACCORDANCE WITH PERMITS.
14. FULL COMPLIANCE WITH SECTION 306.1.6.4 OF THE STANDARD SPECIFICATIONS WILL BE REQUIRED FOR BACKFILL BY STREET CERTIFICATION OF RECORD CONSTRUCTION AND LAND DEVELOPMENT BY A QUALIFIED, LICENSED TESTING LABORATORY SHALL BE PROVIDED BY THE PERMITTEE PRIOR TO THE ISSUANCE OF A CERTIFICATE OF PARTIAL ACCEPTANCE.

PROFILE, ALIGNMENT AND GRADE OF
SANITARY SEWERS PAGE 1
 TO BE CONSTRUCTED IN

TRACT NO. 36726
 PRIVATE CONTRACT NO. 9682

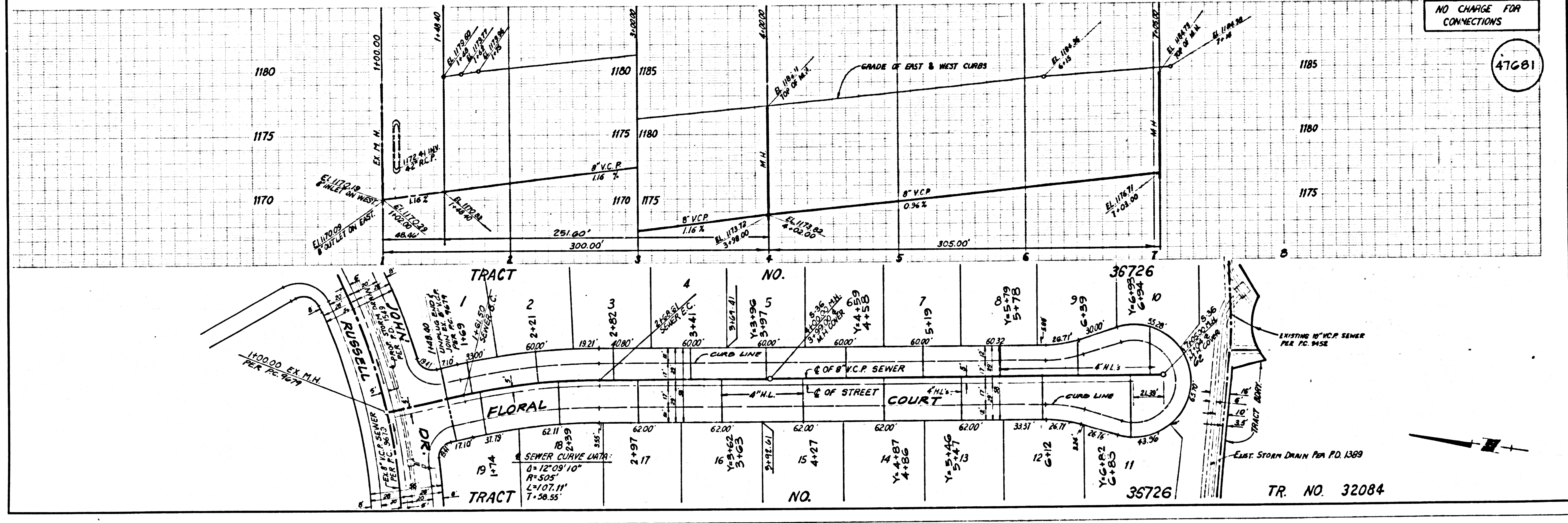
W.S. 62
 3 SHEETS, 5 PAGES
 SCALE: HORIZ. 1"=40' VERT. 1"=4'
 DATE: OCTOBER 18, 1979
 PREPARED IN THE OFFICES OF
 SIKAND ENGINEERING ASSOCIATES
 2520 BURLINGAME BLVD., SUITE 100
 CALIFORNIA 91118 (818) 371-8550
 BY: *Naval C. Kung*
 REG. C. E. No. 21823

47680

THE FOLLOWING LATEST REVISION STANDARDS PLANS ON FILE IN THE OFFICE OF THE COUNTY ENGINEER SHALL APPLY TO THE CONSTRUCTION OF THIS PROJECT:

WORKING	0.1
MINIMUM PUBLIC SAFETY REQUIREMENTS	0.2
BRICK MANHOLES	0.3
STANDARD MANHOLE RISE	0.4
BRICKWORK FOR SEWER PIPE	0.5
CONCRETE AND ENCASEMENT	0.6
WYE OR TEE BRANCH	0.7
AUTOMATIC FRENCH TRIM	0.8
BRICKWORK FOR MANHOLE AND COVER	0.9
NON-REINFORCED PRECAST CONCRETE MANHOLES	1.0

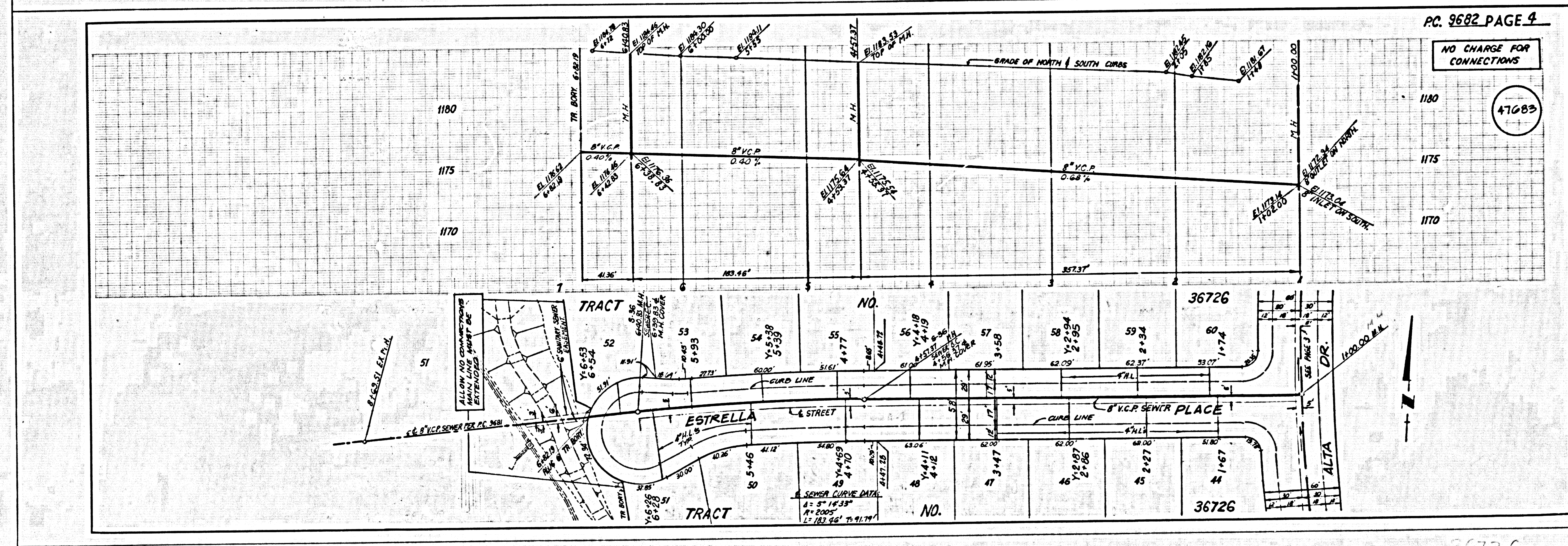
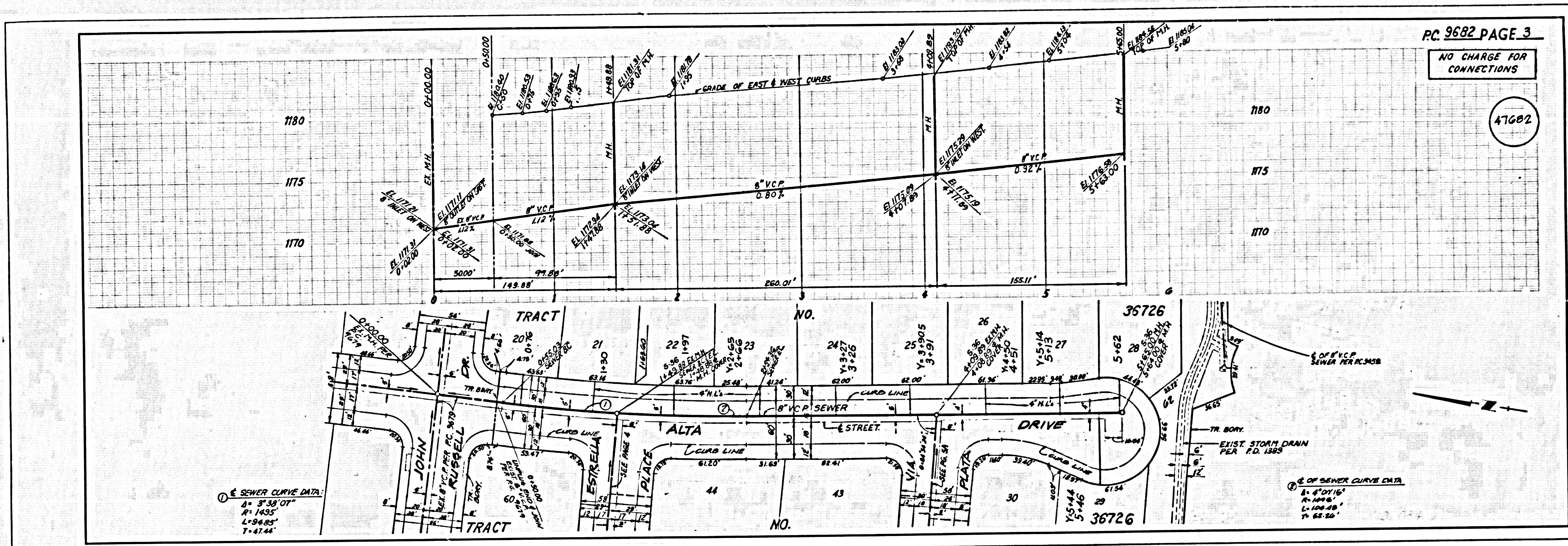
COUNTY OF LOS ANGELES, CALIFORNIA
 STEPHEN J. RODGEE, COUNTY ENGINEER
 WALTER E. GARRISON, CHIEF ENGINEER
 APPROVED: *Stephen J. Rodgee* 2-13-80
 APPROVED: *Walter E. Garrison* 2/19/80
 CHECKED: *Edith Davis* 2/19/80
 REG. C.E. NO. 16573
 SANTA CLARITA BLDG DIST 82



NO CHANGE FOR CONNECTIONS

47681

L.A. COUNTY SEWER SHEET NO. 1 SOUTHERN CALIFORNIA BLUEPRINT CO. 205 2-78



36726

51000

NO CHARGE FOR CONNECTIONS

47684

