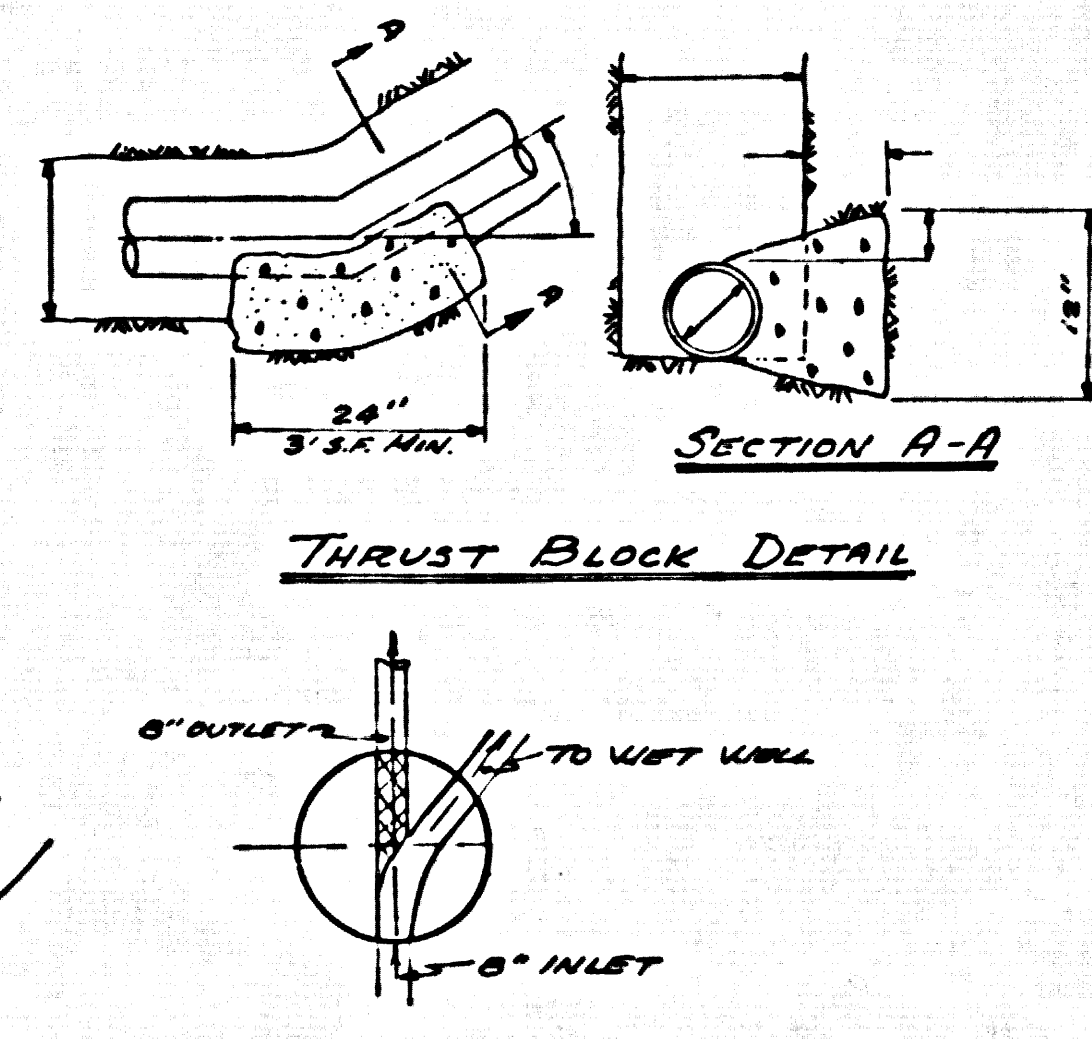
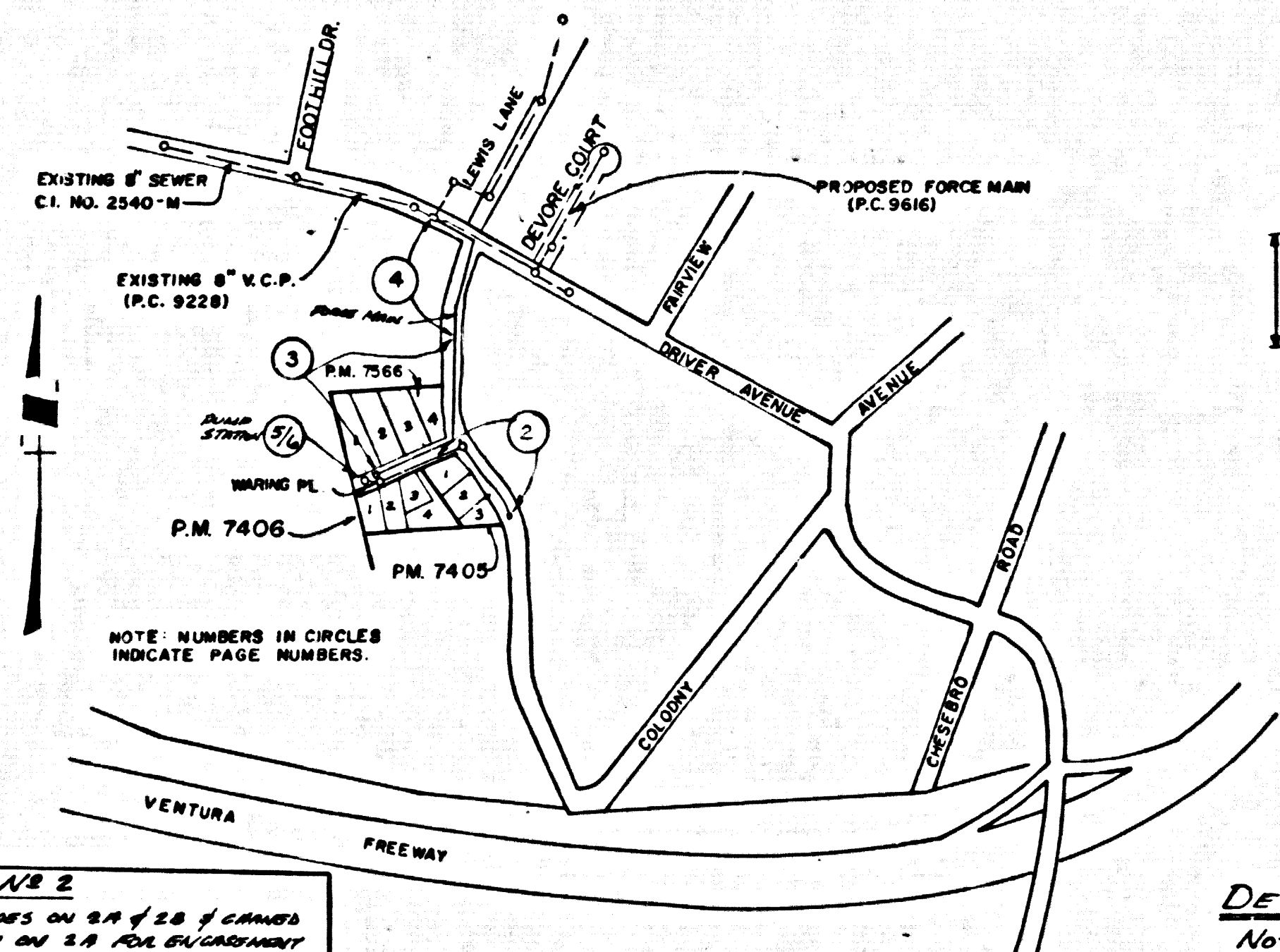
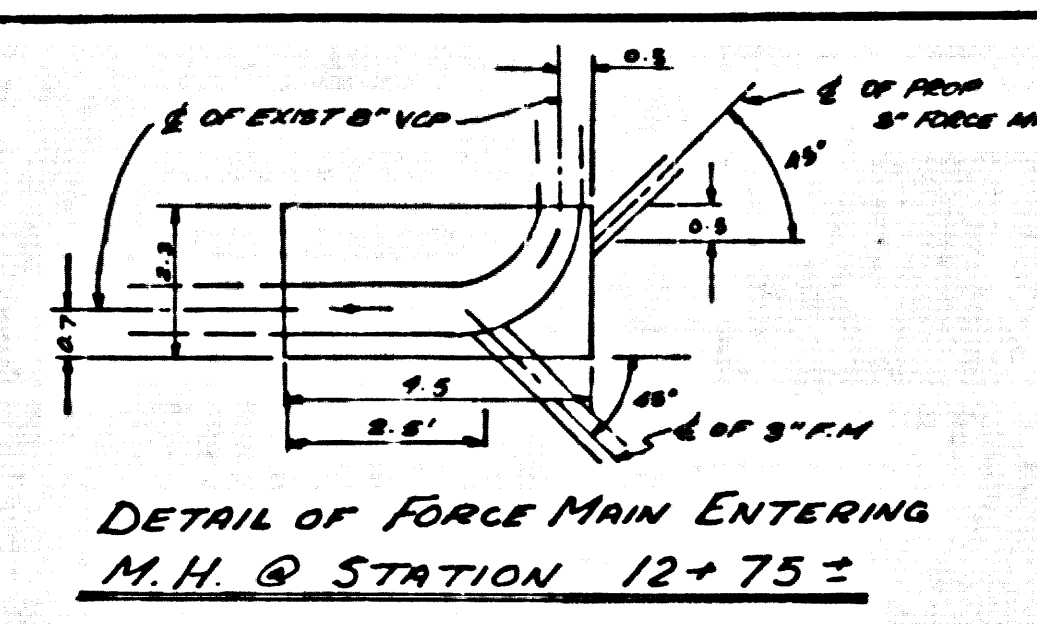


B.M. M.F. 38 ELEV. 926.772  
 DRIVER AVE. LEWIS ROAD SE COR  
 CHIS "X" IN MOST NELY BOLT IN THE  
 LOWER FIRE HYD. FLG. 54E 28S  
 MALIBU QUAD. 19 71



DETAIL OF BASE FOR M.H. @ STA 0+50.00  
 NOTE: AFTER FORMING CHANNELS IN BASE FOR FUTURE 8\"/>

REVISION NO. 2  
 REVISED LAYOUT ON 8\"/>

REVISION NO. 1  
 REVISED ALIGNMENT ON 8\"/>

GENERAL NOTES:

1. ELEVATIONS ARE IN FEET ABOVE M.S.L. & S.D. UNLESS OTHERWISE NOTED BY THE COUNTY ENGINEER.
2. NO STRUCTURE SHALL BE BUILT IN THESE AREAS WITHOUT THE APPROVAL OF THE COUNTY ENGINEER.
3. NO REPRESENTATIVE OF THE COUNTY ENGINEER SHALL BE REQUIRED TO SET OUT ANY PORTION OF THE WORK.
4. GRADES TO WHICH THIS WORK IS TO BE CONSTRUCTED ARE SHOWN ON PLANS AND PROFILES. GRADE POINTS FOR TOP OF CURBS, CENTER LINE OF STREETS, OR CENTER LINE OF ALLEYS ARE SHOWN BY CIRCLES ON PLANS. AT ALL POINTS BETWEEN DESIGNATED POINTS THE GRADE SHALL BE ESTABLISHED SO AS TO CONFORM TO A SMOOTH LINE DRAWN BETWEEN SAID DESIGNATED POINTS.
5. THE PRIVATE ENGINEER SHALL FURNISH THE COUNTY ENGINEER WITH GRADE SHEETS AND ELEVATIONS FOR ALL HOUSE LATERALS AND 12\"/>
- 6. THE PRIVATE ENGINEER SHALL BE RESPONSIBLE FOR THE PROTECTION OF ALL EXISTING UTILITIES AND STRUCTURES. ALL HOUSE LATERALS SHALL BE CONSTRUCTED AS A STRAIGHT ALIGNMENT AT RIGHT ANGLES FROM THE MAIN LINE SEWER EXCEPT AS SHOWN ON THE PLANS. HOUSE LATERALS FROM CHIMNEYS SHALL NOT HAVE AN ANGLE OF LESS THAN 45° WITH THE MAIN LINE SEWER. ANY CHANGE IN ALIGNMENT SHALL BE REQUESTED IN WRITING BY THE PRIVATE ENGINEER.
- 7. THE PRIVATE ENGINEER SHALL FURNISH THE HOUSE LATERAL BATHS AT THE PROPERTY LINE SHOWING THE TOP OF CURB ELEVATION FOR EACH HOUSE LATERAL ON THE BATH SHEET.
- 8. BEFORE WORK CAN BE STARTED, THE CONTRACTOR MUST OBTAIN A PERMIT TO EXCAVATE IN COUNTY STREETS FROM THE L.A. COUNTY ROAD DEPT. PERMIT OFFICE AND A PERMIT TO USE THE COUNTY ENGINEER'S OFFICE AND RECORD PLANS.
- 9. IF WORK IS TO BE DONE ON A STATE HIGHWAY, A PERMIT MUST BE OBTAINED FROM THE STATE OF CALIFORNIA, DIVISION OF HIGHWAYS, THE SOURCE BEING STREET, LOS ANGELES, CALIFORNIA.
- 10. APPROVAL OF THIS PLAN BY THE COUNTY OF LOS ANGELES DOES NOT CONSTITUTE A REPRESENTATION AS TO THE ACCURACY OF THE LOCATION OF OR THE EXISTENCE OR NON-EXISTENCE OF ANY UNDERGROUND UTILITY PIPE, OR STRUCTURE WITHIN THE LIMITS OF THIS PROJECT. THE CONTRACTOR SHALL BE RESPONSIBLE FOR THE LOCATION OF ALL UTILITIES.
- 11. APPROVAL OF THIS PLAN BY THE COUNTY OF LOS ANGELES DOES NOT CONSTITUTE A REPRESENTATION AS TO THE ACCURACY OF THE LOCATION OF OR THE EXISTENCE OR NON-EXISTENCE OF ANY UNDERGROUND UTILITY PIPE, OR STRUCTURE WITHIN THE LIMITS OF THIS PROJECT. THE CONTRACTOR SHALL BE RESPONSIBLE FOR THE LOCATION OF ALL UTILITIES.
- 12. APPROVAL OF THIS PLAN BY THE COUNTY OF LOS ANGELES DOES NOT CONSTITUTE A REPRESENTATION AS TO THE ACCURACY OF THE LOCATION OF OR THE EXISTENCE OR NON-EXISTENCE OF ANY UNDERGROUND UTILITY PIPE, OR STRUCTURE WITHIN THE LIMITS OF THIS PROJECT. THE CONTRACTOR SHALL BE RESPONSIBLE FOR THE LOCATION OF ALL UTILITIES.
- 13. APPROVAL OF THIS PLAN BY THE COUNTY OF LOS ANGELES DOES NOT CONSTITUTE A REPRESENTATION AS TO THE ACCURACY OF THE LOCATION OF OR THE EXISTENCE OR NON-EXISTENCE OF ANY UNDERGROUND UTILITY PIPE, OR STRUCTURE WITHIN THE LIMITS OF THIS PROJECT. THE CONTRACTOR SHALL BE RESPONSIBLE FOR THE LOCATION OF ALL UTILITIES.
- 14. APPROVAL OF THIS PLAN BY THE COUNTY OF LOS ANGELES DOES NOT CONSTITUTE A REPRESENTATION AS TO THE ACCURACY OF THE LOCATION OF OR THE EXISTENCE OR NON-EXISTENCE OF ANY UNDERGROUND UTILITY PIPE, OR STRUCTURE WITHIN THE LIMITS OF THIS PROJECT. THE CONTRACTOR SHALL BE RESPONSIBLE FOR THE LOCATION OF ALL UTILITIES.

CONSTRUCTION NOTES:

1. WORK SHALL BE CONSTRUCTED ACCORDING TO THE STANDARD SPECIFICATIONS FOR PUBLIC WORKS CONSTRUCTION WITH THE EXCEPTIONS NOTED HEREON.
2. THE CONTRACTOR SHALL SHOW THE 8\"/>
- 3. HOUSE LATERALS TO BE CONSTRUCTED WITH INVERTS AT PROPERTY LINE AS SHOWN ON THIS PLAN.
- 4. THE INVERT OF THE MAIN LINE SEWER SHALL BE AS SHOWN ON THIS PLAN.
- 5. ALL STRUCTURES SHALL BE BUILT WITH CONCRETE MANHOLES PER S.D. SPEC. EXCEPT AS NOTED.
- 6. PROVIDE STAIRS ON THE PROPERTY LINE OR PROPERTY LINES PRODUCED AT RIGHT ANGLES TO THE SEWER LINE AT THE CENTER LINE OF EACH MANHOLE.
- 7. MANHOLES FOR UNIMPROVED PORTS OF WAY TO BE BUILT ABOVE FINISHED GRADE.
- 8. WITHIN CLAY PIPE JOINTS SHALL BE 12\"/>
- 9. A 6\"/>
- 10. ALL STRUCTURES SHALL BE BUILT WITH CONCRETE MANHOLES PER S.D. SPEC. EXCEPT AS NOTED.
- 11. ALL JOINTS BETWEEN CURB AND MAIN LINE AND BETWEEN CLAY PIPE SHALL BE MADE WITH A RUBBER SERVICE JOINT, TYPE "C" OR "D", WITH GASKETS IF NECESSARY PER STANDARD SPECIFICATIONS, SECTION 204.4.
- 12. BEFORE WORK IS STARTED FOR UNIMPROVED PORTS OF WAY, THE CONTRACTOR SHALL BE RESPONSIBLE FOR THE PROTECTION OF ALL EXISTING UTILITIES AND STRUCTURES.
- 13. REPAIRS TO ALL UTILITIES WITHIN PUBLIC AREAS TO BE MADE TO THE SATISFACTION OF THE COUNTY ENGINEER AND SHALL BE MADE IN ACCORDANCE WITH PERMITS.
- 14. THIS CONTRACT IS SUBJECT TO THE STANDARD SPECIFICATIONS FOR PUBLIC WORKS CONSTRUCTION AND SPECIAL PROVISIONS OF THE COUNTY OF LOS ANGELES. THE CONTRACTOR SHALL BE RESPONSIBLE FOR OBTAINING ALL NECESSARY PERMITS AND FOR THE PROTECTION OF ALL EXISTING UTILITIES AND STRUCTURES.

PROFILE, ALIGNMENT AND GRADE OF  
 SANITARY SEWERS PAGE 1

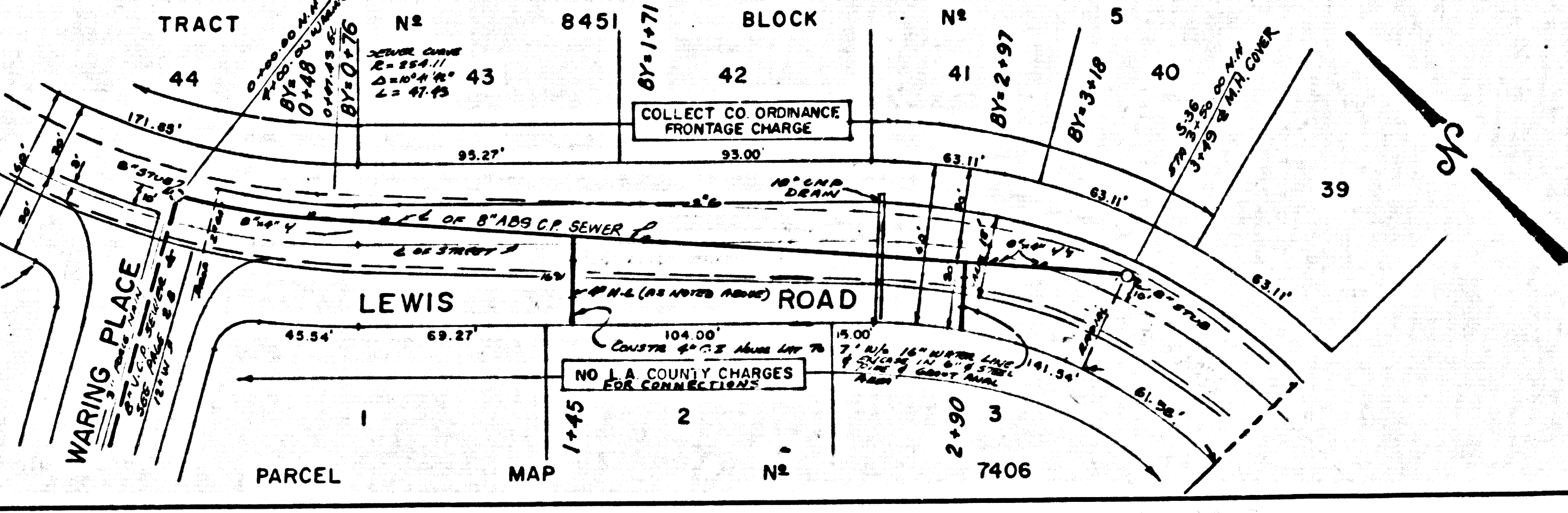
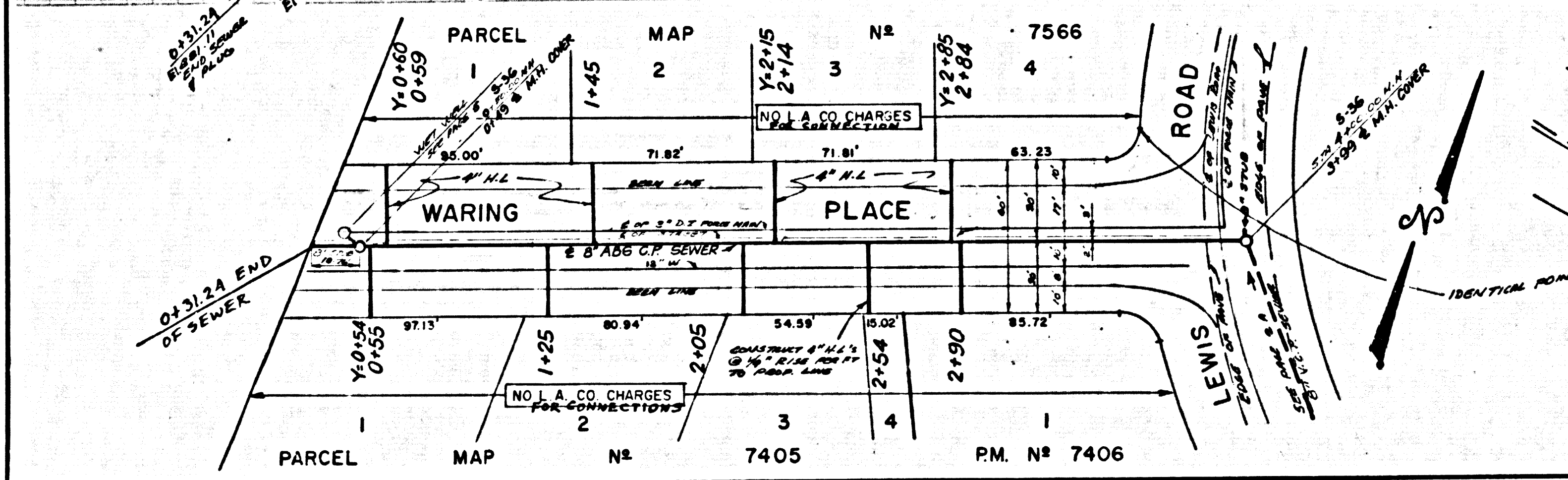
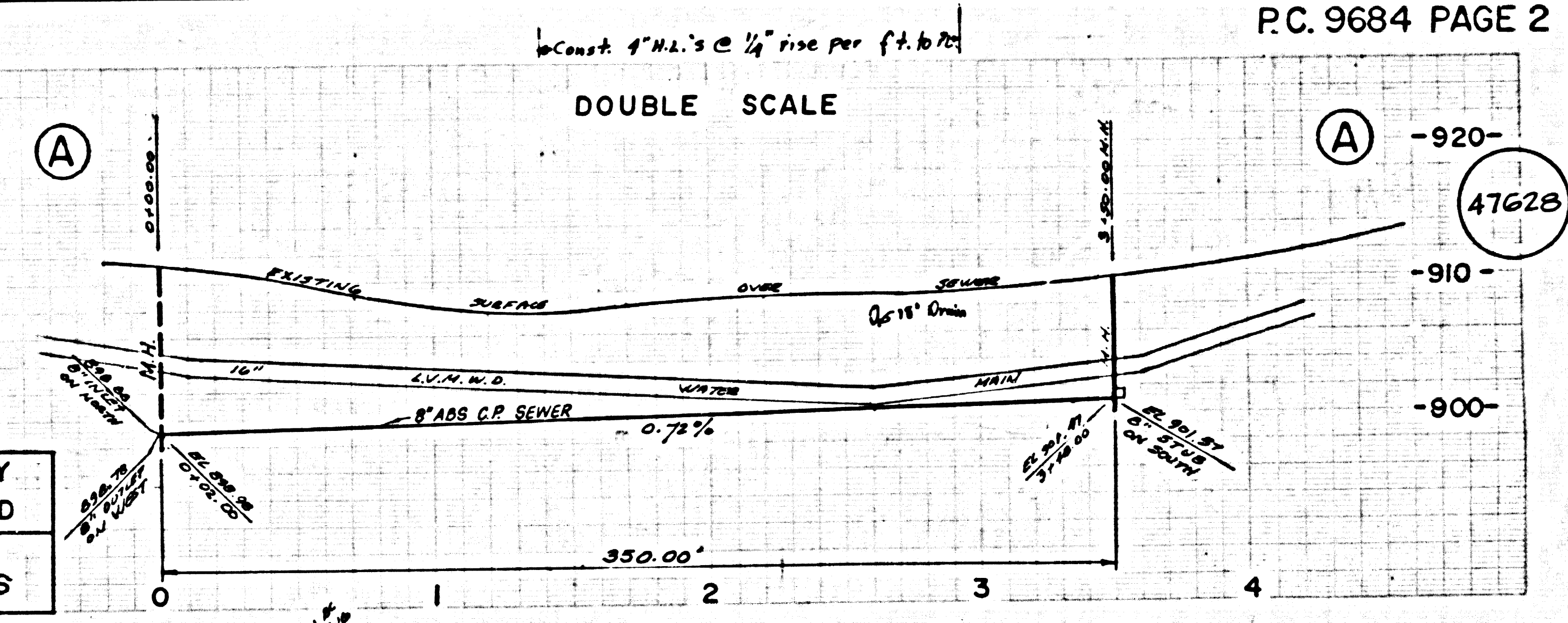
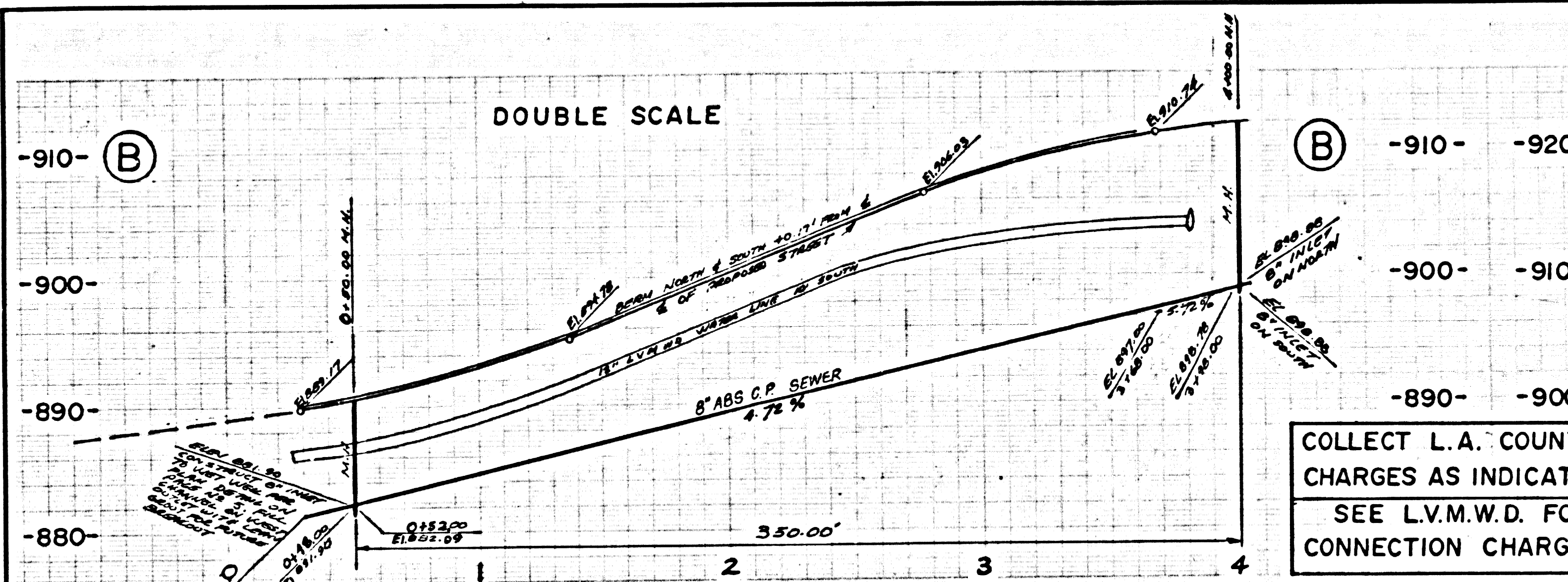
TO BE CONSTRUCTED IN  
 WARING PLACE, LEWIS ROAD &  
 AGOURA ROAD  
 PRIVATE CONTRACT NO. 9684

W.S. 90  
 4 SHEETS, 6 PAGES  
 SCALE: 1\"/>

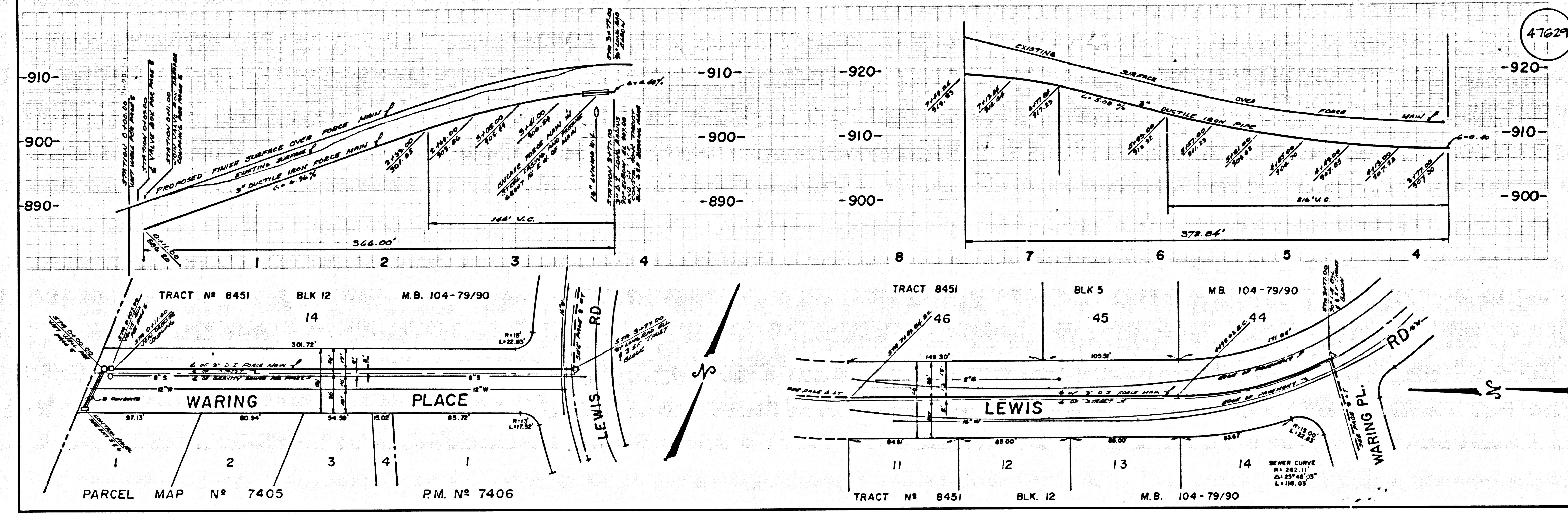
THE FOLLOWING LISTED STANDARD PLANS ON FILE IN THE OFFICE OF THE COUNTY ENGINEER SHALL APPLY IN THE CONSTRUCTION OF THIS PROJECT:

STANDARD PUBLIC SAFETY REGULATIONS	S-1
STANDARD PUBLIC SAFETY REGULATIONS	S-2
STANDARD PUBLIC SAFETY REGULATIONS	S-3
STANDARD PUBLIC SAFETY REGULATIONS	S-4
STANDARD PUBLIC SAFETY REGULATIONS	S-5
STANDARD PUBLIC SAFETY REGULATIONS	S-6
STANDARD PUBLIC SAFETY REGULATIONS	S-7
STANDARD PUBLIC SAFETY REGULATIONS	S-8
STANDARD PUBLIC SAFETY REGULATIONS	S-9
STANDARD PUBLIC SAFETY REGULATIONS	S-10
STANDARD PUBLIC SAFETY REGULATIONS	S-11
STANDARD PUBLIC SAFETY REGULATIONS	S-12
STANDARD PUBLIC SAFETY REGULATIONS	S-13
STANDARD PUBLIC SAFETY REGULATIONS	S-14
STANDARD PUBLIC SAFETY REGULATIONS	S-15
STANDARD PUBLIC SAFETY REGULATIONS	S-16
STANDARD PUBLIC SAFETY REGULATIONS	S-17
STANDARD PUBLIC SAFETY REGULATIONS	S-18
STANDARD PUBLIC SAFETY REGULATIONS	S-19
STANDARD PUBLIC SAFETY REGULATIONS	S-20

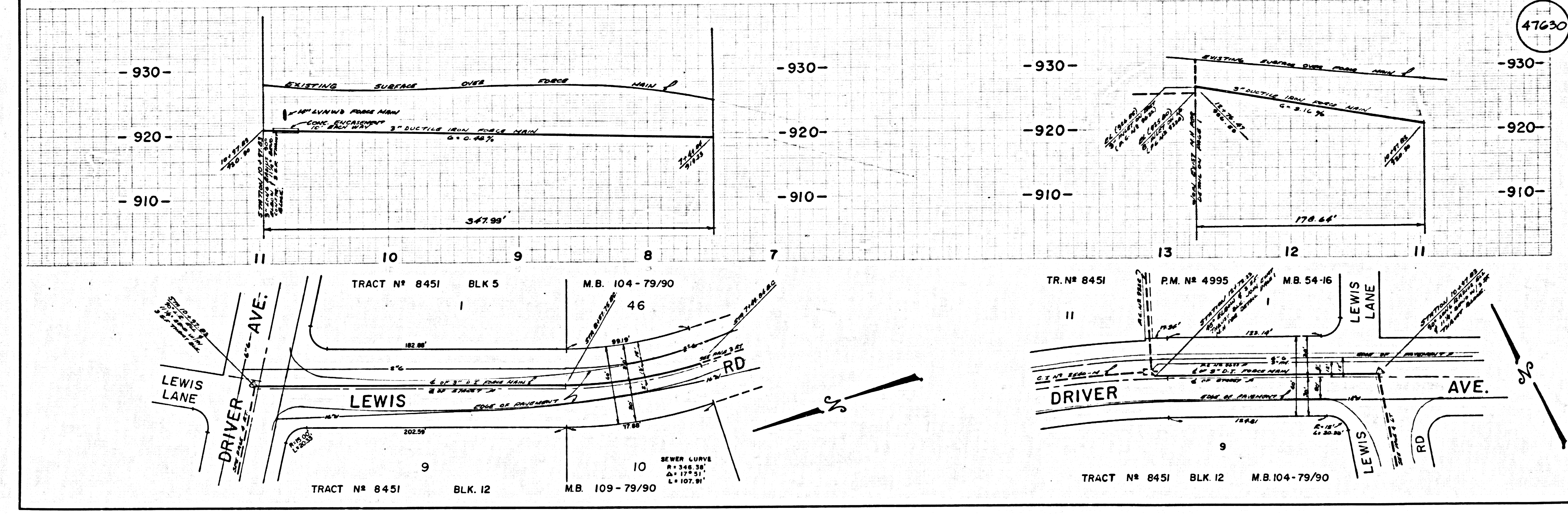
COUNTY OF LOS ANGELES, CALIFORNIA  
 STEPHEN J. KOONCE, COUNTY ENGINEER LAS VIRGENES MUNICIPAL WATER DISTRICT  
 APPROVED *Carroll* 6/1/79  
 CHECKED *Ralph* 6/1/79  
 DATE 6/1/79  
 CALABASAS BLDG. DIST. 9.1 J.N. 0358.11



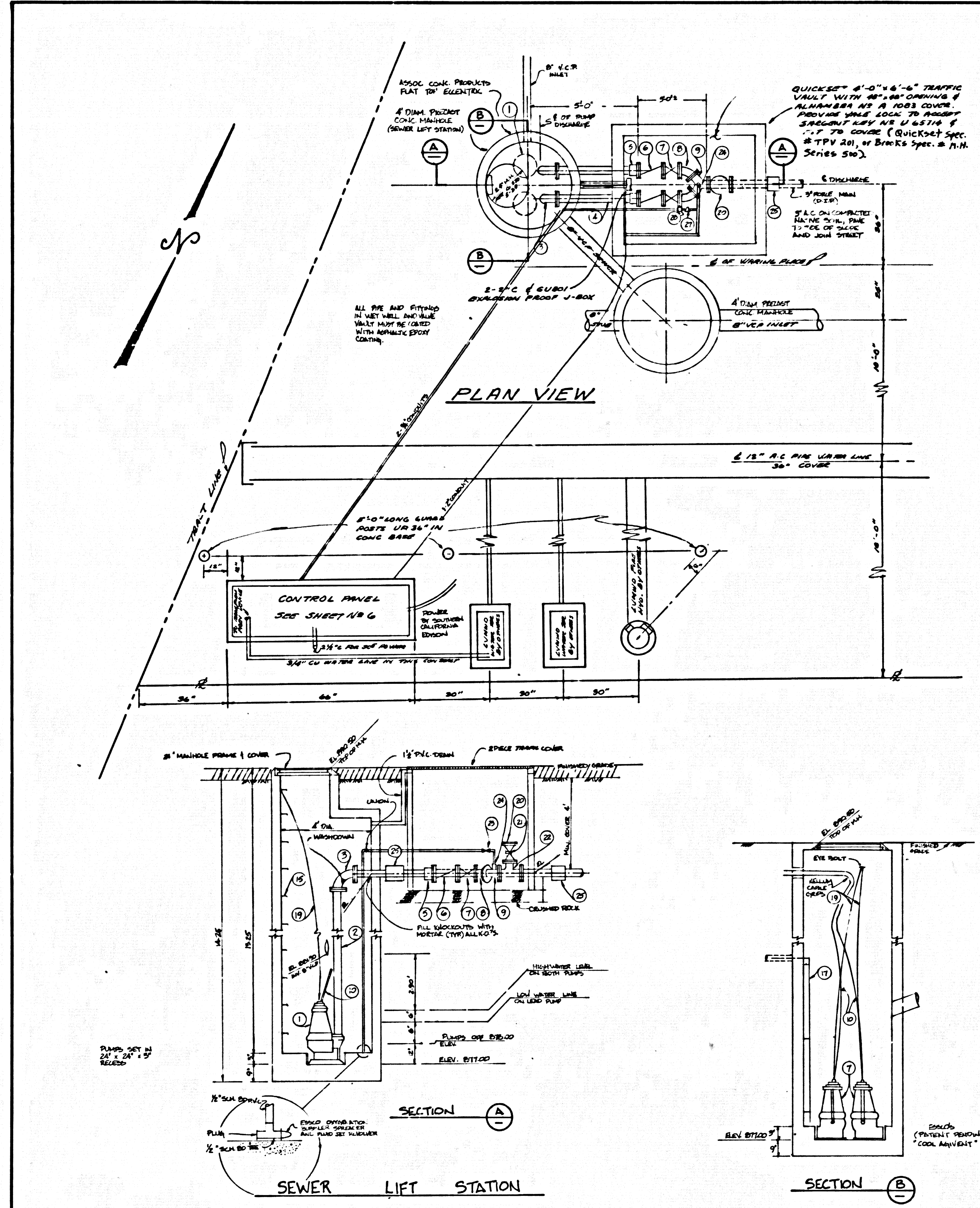
COLLECT L.A. COUNTY CHARGES AS INDICATED  
 SEE L.V.M.W.D. FOR CONNECTION CHARGES



47629



47630



**GENERAL NOTES:**

1. THE CONTRACTOR SHALL VERIFY ALL DIMENSIONS.
2. SUPERVISION FOR INSTALLATION, STARTUP AND TESTING TO BE PROVIDED BY THE MANUFACTURER'S REPRESENTATIVE AS PART OF THE EQUIPMENT CONTRACT.
3. CONCRETE SHALL BE PORTLAND CEMENT CONCRETE AND SHALL DEVELOP A MINIMUM COMPRESSIVE STRENGTH OF 3000 PSI AT 28 DAYS.
4. ALL FITTINGS AND VALVES SHALL BE FLANGED CAST IRON (C.I.) D.I. MANHOLE.
5. ALL ELECTRICAL WIRING AND EQUIPMENT INSTALLED IN THE "NET WELL" SECTION MUST COMPLY WITH ARTICLE 22 OF THE ELECTRICAL SAFETY CODES FOR CLASS 1, DIVISION 1, HAZARDOUS LOCATIONS. THE PROVISIONS OF THE NATIONAL ELECTRICAL CODE AND ALL APPLICABLE LOCAL CODES.
6. ALL CONDUITS TO BE QUALIFIED STEEL WRAPPED OR P.V.C. COATED WIRE TO BE RUN IN TUBS, COVER CONDUITS.
7. ALL PRACTICES AND PROCEDURES, MATERIALS AND PLACEMENT OF MATERIALS SHALL CONFORM IN EVERY RESPECT TO THE STANDARD PLANS & SPECIFICATIONS OF THE COUNTY OF LOS ANGELES.
8. FLOOR OF NET WELL TO BE SMOOTH AND LEVEL.
9. HOLES TO BE CUT TO LENGTH AND INSTALLED TAUT.
10. MOTOR PULL COUPLER MUST BE INSTALLED AS SHOWN.
11. ALL UNDERGROUND CONDUITS MUST BE WRAPPED OR P.V.C. COATED.
12. ELEC. PANEL CONTROL, 200 AMP.
13. PUMP COUPLER TO BE WRAPPED WITH ROOM COVERED EPOXY. SHALL BE IN VENT TUBS.
14. WIRING SHALL BE INSTALLED IN TUBS.
15. ALL CONDUITS BETWEEN MOTOR AND JUNCTION BOX AND CONTROL SHALL BE CONTINUOUS WITH NO SPLICERS.

SEWER PUMP MOUNTING  
 BUSINESS UNIT - 4975 S. GARDEN BLVD.  
 LOS ANGELES, CALIF.  
 (213) 241-2001

**EQUIPMENT AND MATERIAL SCHEDULE**

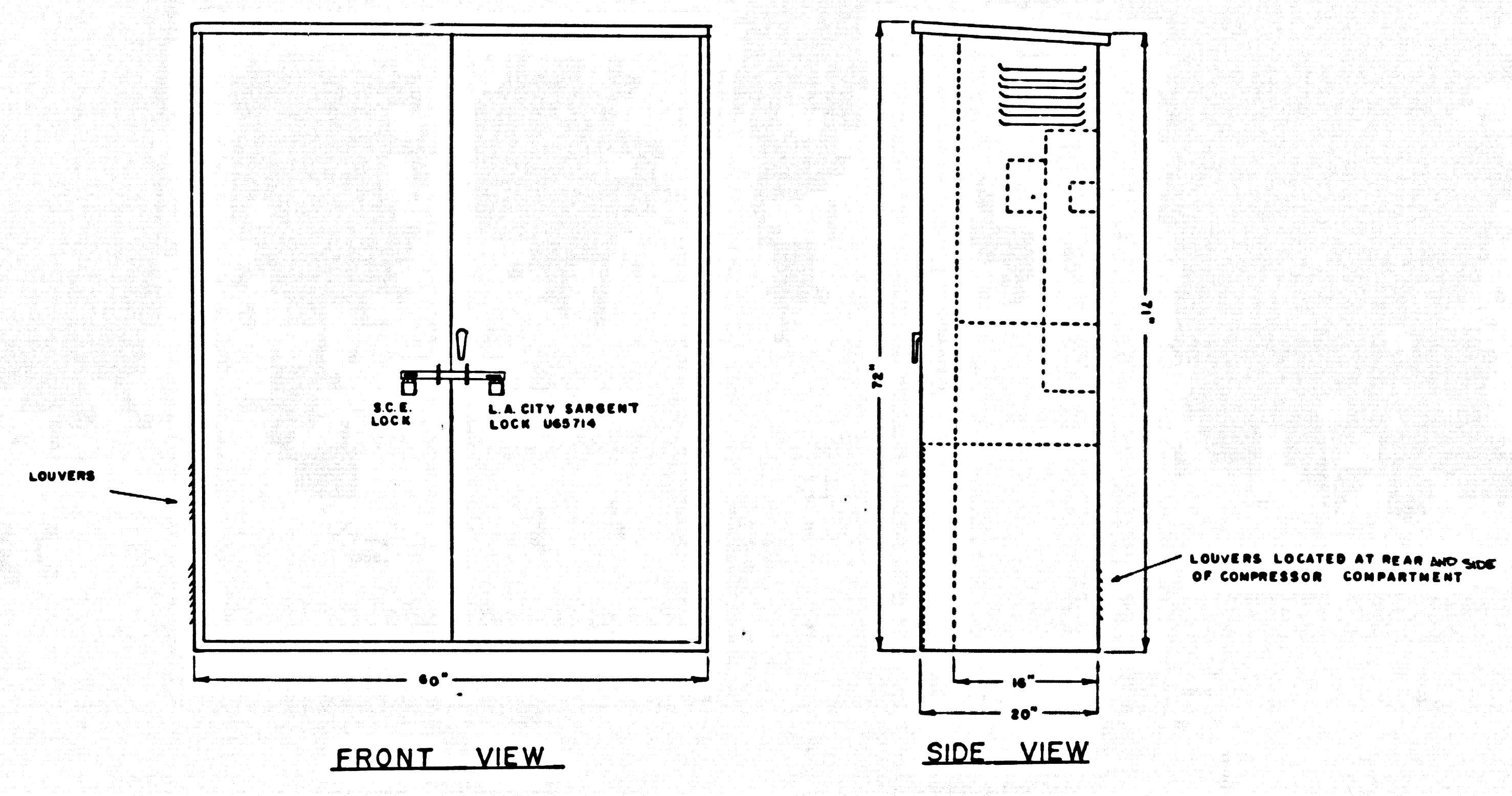
NO.	DESCRIPTION	QUANTITY
1	SUMMERALL PUMP AND MOTOR (ELECT. 440V) TORQUE FLUID COUPLER, 200HP, 3/4" DIA. MOTOR	2
2	3" ACID RESISTANT FLEXIBLE HOSE (75 PSI) WITH MALE STAINLESS STEEL BLANDED CONNECTIONS (DOWNSIZED TIGHT)	2
3	3" LOW RADIUS CAST IRON FLANGED ELBOW (10000 W/STANDARD)	2
4	3" FLANGED CAST IRON FLY WHEEL	2
5	3" FLANGED COUPLING ADAPTER 3/8" HOLES OR BRASS	2
6	3" FLEVEE AND HOSE CHECK VALVE FULL OPERATING PRESSURE POLYMER FLANGE EPOXY WOUND COUPLER OR EPOXY INSERT AS SHOWN	2
7	3" HONEYWELL GATE VALVE NON RISING STEM OR EQUAL	2
8	3" FLANGED 45° CAST IRON FLEVES	2
9	3" FLANGED CAST IRON TIE WIRE WITH 3/8" TIE	2
10	POWER SUPPLY CABLES (SCHEDULED WITH PUMP) 30' CABLE 3/8" (3 TERMINALS, 1 GROUND) 0.50 DIA. ERM PUMP 2700 RPM (PROTECTOR WINDING WIRES) 0.45 DIA. EA.	2
11	ALTERNATING RELAY (20V, 100T)	2
12	COMMUNICATION CIRCUIT BREAKER, SWITCH WITH 5 QUAK TRIP OVERLOADS, 100V COIL AND EXTERNAL RESET BUTTON	2
13	ELECTRICAL TYPE RELAY, 100V, PRIMARY COIL AND ONE NO CONTACT - AMERICA 1/2" SILENCE APPROVED EQUAL	2
14	COMPRESSOR (DISCHARGE TYPE (20V, TUBING, EPOXY L.A. CITY TEST LAB. APPROV.)	2
15	3/4" x 3/4" GALV. STEEL STEPS	1-5
16		
17	3/8" P.V.C. AIR LINE ON STAINLESS STEEL BRACKET & NYLON HANGERS TIES	1
18		
19	STANDARD STEEL CABLE WIREWACK 1/4" x 1/4" NYLON COVERED CABLE TENDON STRENGTH WITH 1/2" GALV. PLATED EYE BOLT 1 1/2" HOOK	2
20	CAST IRON FLANGED PLUNGER 3"	1
21	HONEYWELL GATE VALVE NON RISING STEM OR EQUAL	1
22	CAST IRON FLANGED TIE 3"	1
23	TRICOTTE LIGHT WITH 3/8" WIRE TO 30 LB. 1 RUN CONTINUOUSLY	1
24	1/2" COVER TUBING WITH TIGHT WIRE PROTECT WITH WHITE ALUM. COUPLER CHECK VALVE AND DISCHARGE VALVE	1
25	DRESSER COUPLING 3/4" O.D. TO D.I.	1
26	3" FLEVEE AND HOSE CHECK VALVE FULL OPERATING PRESSURE POLYMER FLANGE EPOXY WOUND COUPLER OR EPOXY INSERT AS SHOWN	1
27	REGULATOR 1/2"	1
28	FLOW METER 1/2"	1
29		
30		

47631

TERENCE O'NEILL & ASSOCIATES  
 CIVIL ENGINEERS AND LAND SURVEYORS  
 3317 ARGOS STREET, SUITE 100, LOS ANGELES, CALIF. 90018  
 (213) 991-2798  
 SCALE: NONE  
 DATE: 8-3-79  
 DRAWN BY: T.P.F.  
 REVISED: TAO SA  
**SEWAGE PUMP STATION**  
 P.C. No 9684 PAGE 5

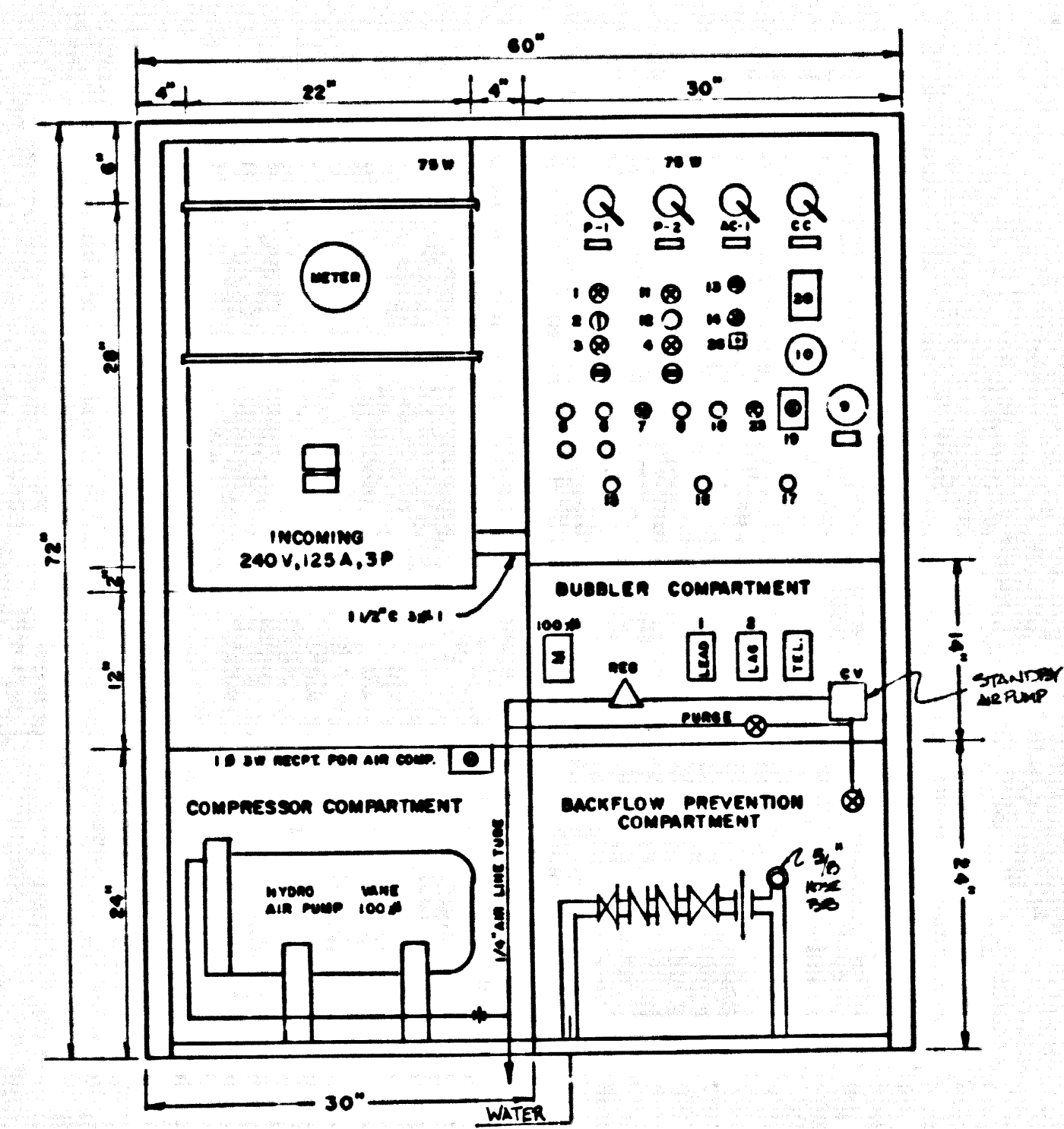
4889 11 39

47632

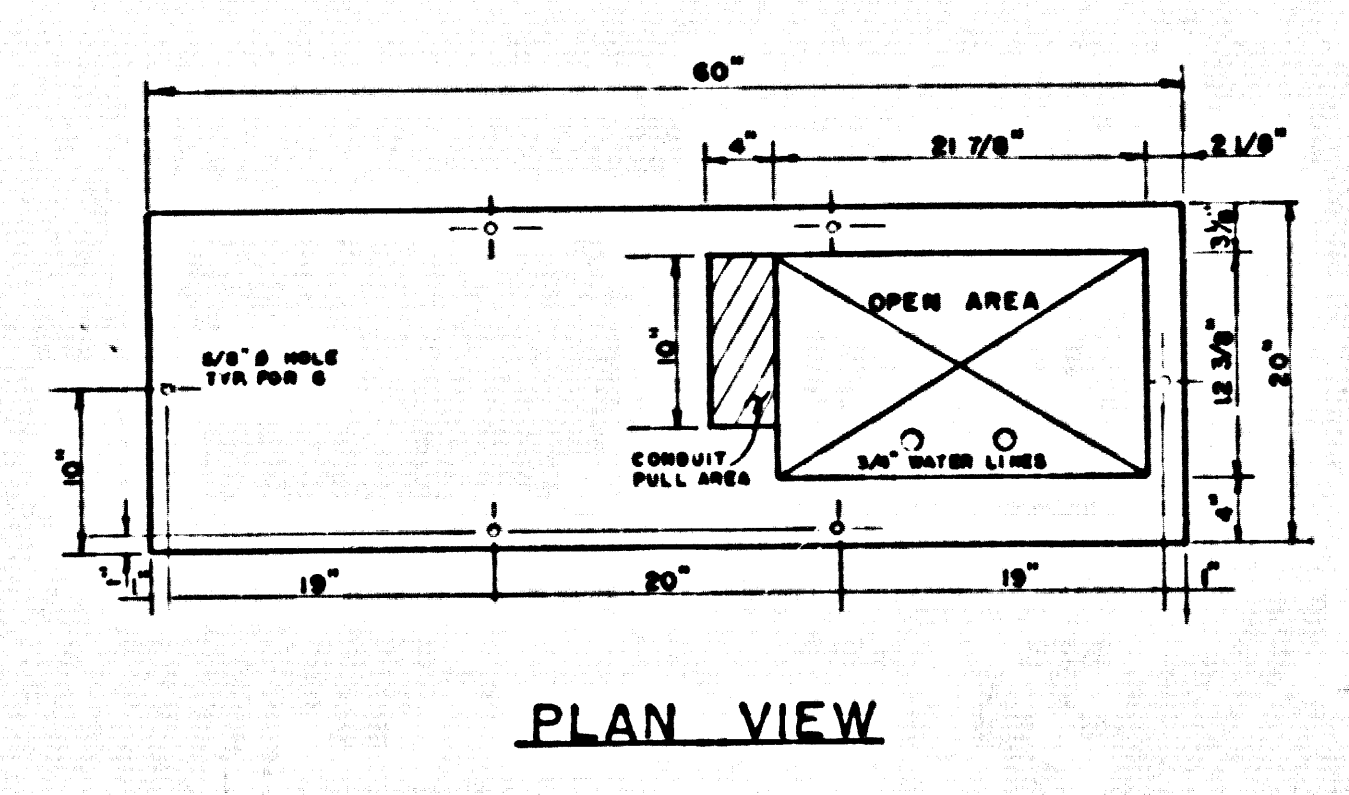


FRONT VIEW

SIDE VIEW

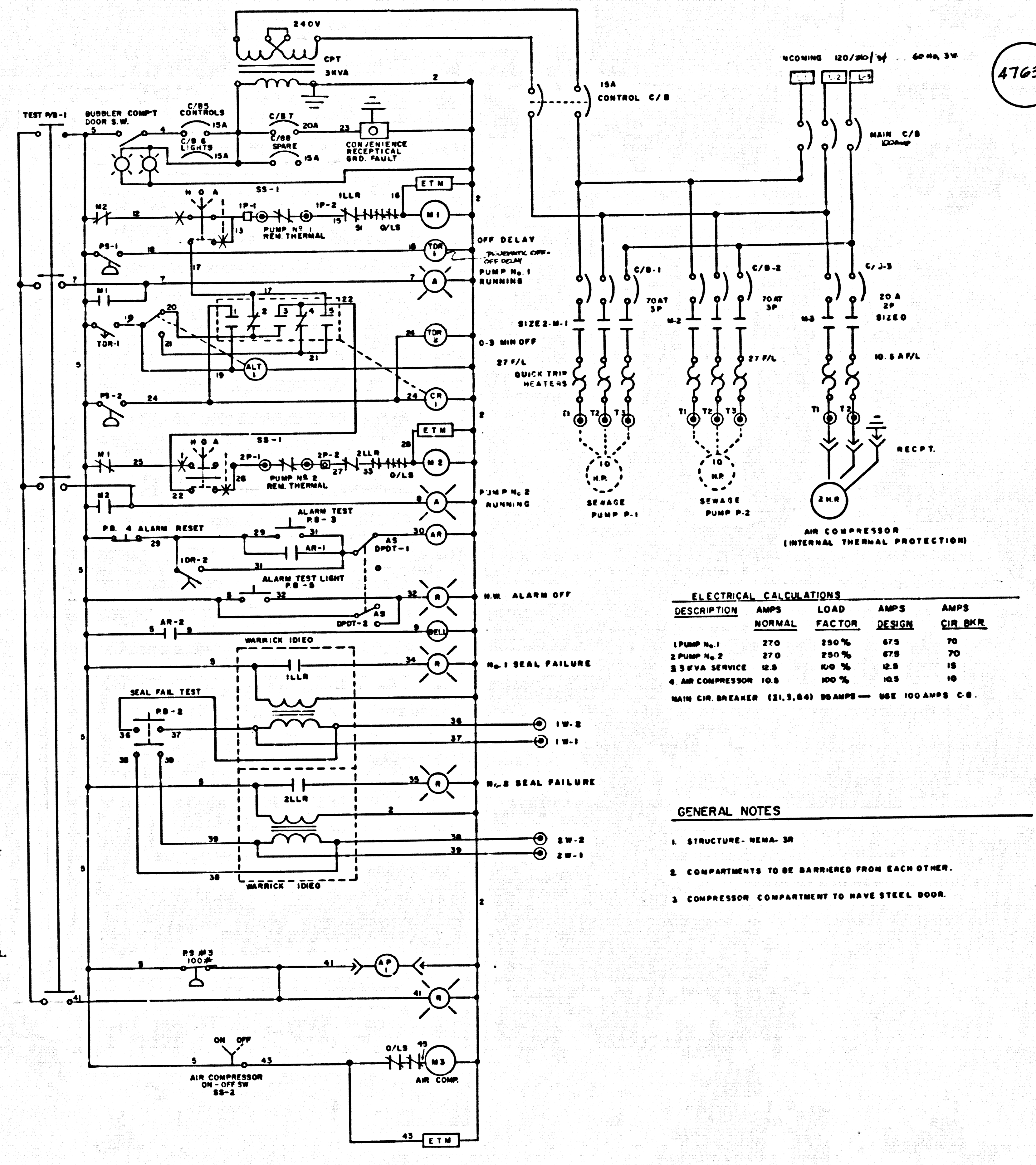


INTERIOR VIEW



PLAN VIEW

1. P-1 AMBER "RUN" LIGHT
2. P-1 H-O-S SWITCH
3. P-1 RED SEAL FAILURE LIGHT
4. P-2 RED SEAL FAILURE LIGHT
5. SEAL FAILURE TEST PB-2
6. ALARM TEST PB-3
7. RED ALARM LIGHT
8. ALARM RESET PB-4
9. ALARM BELL
10. P-1 AMBER RUN LIGHT
11. P-2 H-O-S SWITCH
12. P-2 H-O-S SWITCH
13. P-2 H-O-S SWITCH
14. A/C ON OFF SW
15. P-1 O/L RESET
16. P-2 O/L RESET
17. P-1 LIGHTS TEST
18. P-1 LIGHTS TEST
19. CONVENIENCE RECEPT
20. 50A CENTER
21. P-1 O/L
22. P-1 O/L
23. RED COMPRESSOR ALY LIGHT
24. ALARM LIGHT TEST PB-5
25. MANUAL AIR TRANSFER PB-6
26. ALARM SILENCE OPRY



SCHEMATIC DIAGRAM - RUBBLER CONTROL SYSTEM

ELECTRICAL CALCULATIONS

DESCRIPTION	AMPS	LOAD	AMPS	AMPS
	NORMAL	FACTOR	DESIGN	CIR. BRK.
1 PUMP No. 1	270	250 %	675	70
2 PUMP No. 2	270	250 %	675	70
3 55 KVA SERVICE	12.5	100 %	12.5	15
4 AIR COMPRESSOR	10.5	100 %	10.5	10

MAIN CIR. BREAKER (21,3,54) 96AMPS - USE 100AMPS C.B.

GENERAL NOTES

1. STRUCTURE - WEMA-3M
2. COMPARTMENTS TO BE BARRIRED FROM EACH OTHER.
3. COMPRESSOR COMPARTMENT TO HAVE STEEL DOOR.

SEWAGE PUMP STATION AND FORCE MAIN

CHECKED *Robert P. Steen* 5/21/77  
RCE No. 20332

APPROVED *James J. Smith* 4/14/77  
SEWER MAINTENANCE SUPERINTENDENT

TERENCE O'NEILL & ASSOCIATES

CIVIL ENGINEERS AND LEAD SURVEYORS  
5317 ARGOS STREET AGOURA CALIF 91301  
2233 83-2788

SCALE NONE APPROVED BY *Terence O'Neill* (DRAWN BY P.T.)  
DATE 3-4-78 REVISIONS 1, 2, 3, 4, 5, 6, 7, 8, 9, 10, 11, 12, 13, 14, 15, 16, 17, 18, 19, 20, 21, 22, 23, 24, 25, 26, 27, 28, 29, 30, 31, 32, 33, 34, 35, 36, 37, 38, 39, 40, 41, 42, 43, 44, 45, 46, 47, 48, 49, 50, 51, 52, 53, 54, 55, 56, 57, 58, 59, 60, 61, 62, 63, 64, 65, 66, 67, 68, 69, 70, 71, 72, 73, 74, 75, 76, 77, 78, 79, 80, 81, 82, 83, 84, 85, 86, 87, 88, 89, 90, 91, 92, 93, 94, 95, 96, 97, 98, 99, 100, 101, 102, 103, 104, 105, 106, 107, 108, 109, 110, 111, 112, 113, 114, 115, 116, 117, 118, 119, 120, 121, 122, 123, 124, 125, 126, 127, 128, 129, 130, 131, 132, 133, 134, 135, 136, 137, 138, 139, 140, 141, 142, 143, 144, 145, 146, 147, 148, 149, 150, 151, 152, 153, 154, 155, 156, 157, 158, 159, 160, 161, 162, 163, 164, 165, 166, 167, 168, 169, 170, 171, 172, 173, 174, 175, 176, 177, 178, 179, 180, 181, 182, 183, 184, 185, 186, 187, 188, 189, 190, 191, 192, 193, 194, 195, 196, 197, 198, 199, 200, 201, 202, 203, 204, 205, 206, 207, 208, 209, 210, 211, 212, 213, 214, 215, 216, 217, 218, 219, 220, 221, 222, 223, 224, 225, 226, 227, 228, 229, 230, 231, 232, 233, 234, 235, 236, 237, 238, 239, 240, 241, 242, 243, 244, 245, 246, 247, 248, 249, 250, 251, 252, 253, 254, 255, 256, 257, 258, 259, 260, 261, 262, 263, 264, 265, 266, 267, 268, 269, 270, 271, 272, 273, 274, 275, 276, 277, 278, 279, 280, 281, 282, 283, 284, 285, 286, 287, 288, 289, 290, 291, 292, 293, 294, 295, 296, 297, 298, 299, 300, 301, 302, 303, 304, 305, 306, 307, 308, 309, 310, 311, 312, 313, 314, 315, 316, 317, 318, 319, 320, 321, 322, 323, 324, 325, 326, 327, 328, 329, 330, 331, 332, 333, 334, 335, 336, 337, 338, 339, 340, 341, 342, 343, 344, 345, 346, 347, 348, 349, 350, 351, 352, 353, 354, 355, 356, 357, 358, 359, 360, 361, 362, 363, 364, 365, 366, 367, 368, 369, 370, 371, 372, 373, 374, 375, 376, 377, 378, 379, 380, 381, 382, 383, 384, 385, 386, 387, 388, 389, 390, 391, 392, 393, 394, 395, 396, 397, 398, 399, 400, 401, 402, 403, 404, 405, 406, 407, 408, 409, 410, 411, 412, 413, 414, 415, 416, 417, 418, 419, 420, 421, 422, 423, 424, 425, 426, 427, 428, 429, 430, 431, 432, 433, 434, 435, 436, 437, 438, 439, 440, 441, 442, 443, 444, 445, 446, 447, 448, 449, 450, 451, 452, 453, 454, 455, 456, 457, 458, 459, 460, 461, 462, 463, 464, 465, 466, 467, 468, 469, 470, 471, 472, 473, 474, 475, 476, 477, 478, 479, 480, 481, 482, 483, 484, 485, 486, 487, 488, 489, 490, 491, 492, 493, 494, 495, 496, 497, 498, 499, 500, 501, 502, 503, 504, 505, 506, 507, 508, 509, 510, 511, 512, 513, 514, 515, 516, 517, 518, 519, 520, 521, 522, 523, 524, 525, 526, 527, 528, 529, 530, 531, 532, 533, 534, 535, 536, 537, 538, 539, 540, 541, 542, 543, 544, 545, 546, 547, 548, 549, 550, 551, 552, 553, 554, 555, 556, 557, 558, 559, 560, 561, 562, 563, 564, 565, 566, 567, 568, 569, 570, 571, 572, 573, 574, 575, 576, 577, 578, 579, 580, 581, 582, 583, 584, 585, 586, 587, 588, 589, 590, 591, 592, 593, 594, 595, 596, 597, 598, 599, 600, 601, 602, 603, 604, 605, 606, 607, 608, 609, 610, 611, 612, 613, 614, 615, 616, 617, 618, 619, 620, 621, 622, 623, 624, 625, 626, 627, 628, 629, 630, 631, 632, 633, 634, 635, 636, 637, 638, 639, 640, 641, 642, 643, 644, 645, 646, 647, 648, 649, 650, 651, 652, 653, 654, 655, 656, 657, 658, 659, 660, 661, 662, 663, 664, 665, 666, 667, 668, 669, 670, 671, 672, 673, 674, 675, 676, 677, 678, 679, 680, 681, 682, 683, 684, 685, 686, 687, 688, 689, 690, 691, 692, 693, 694, 695, 696, 697, 698, 699, 700, 701, 702, 703, 704, 705, 706, 707, 708, 709, 710, 711, 712, 713, 714, 715, 716, 717, 718, 719, 720, 721, 722, 723, 724, 725, 726, 727, 728, 729, 730, 731, 732, 733, 734, 735, 736, 737, 738, 739, 740, 741, 742, 743, 744, 745, 746, 747, 748, 749, 750, 751, 752, 753, 754, 755, 756, 757, 758, 759, 760, 761, 762, 763, 764, 765, 766, 767, 768, 769, 770, 771, 772, 773, 774, 775, 776, 777, 778, 779, 780, 781, 782, 783, 784, 785, 786, 787, 788, 789, 790, 791, 792, 793, 794, 795, 796, 797, 798, 799, 800, 801, 802, 803, 804, 805, 806, 807, 808, 809, 810, 811, 812, 813, 814, 815, 816, 817, 818, 819, 820, 821, 822, 823, 824, 825, 826, 827, 828, 829, 830, 831, 832, 833, 834, 835, 836, 837, 838, 839, 840, 841, 842, 843, 844, 845, 846, 847, 848, 849, 850, 851, 852, 853, 854, 855, 856, 857, 858, 859, 860, 861, 862, 863, 864, 865, 866, 867, 868, 869, 870, 871, 872, 873, 874, 875, 876, 877, 878, 879, 880, 881, 882, 883, 884, 885, 886, 887, 888, 889, 890, 891, 892, 893, 894, 895, 896, 897, 898, 899, 900, 901, 902, 903, 904, 905, 906, 907, 908, 909, 910, 911, 912, 913, 914, 915, 916, 917, 918, 919, 920, 921, 922, 923, 924, 925, 926, 927, 928, 929, 930, 931, 932, 933, 934, 935, 936, 937, 938, 939, 940, 941, 942, 943, 944, 945, 946, 947, 948, 949, 950, 951, 952, 953, 954, 955, 956, 957, 958, 959, 960, 961, 962, 963, 964, 965, 966, 967, 968, 969, 970, 971, 972, 973, 974, 975, 976, 977, 978, 979, 980, 981, 982, 983, 984, 985, 986, 987, 988, 989, 990, 991, 992, 993, 994, 995, 996, 997, 998, 999, 1000

SEWAGE PUMP STATION CONTROL PANEL

P.C. N° 9684