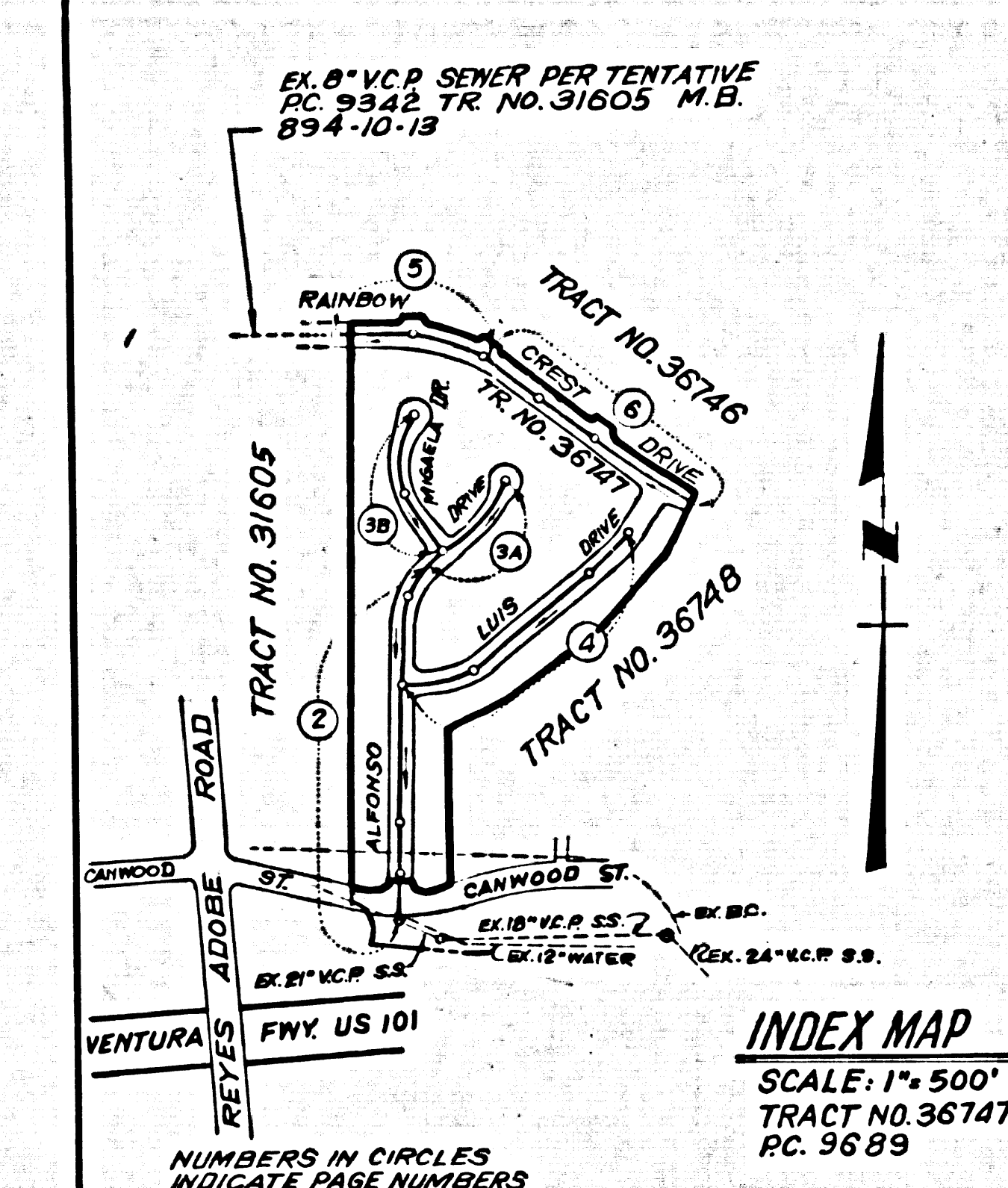


TRACT NO. 36747  
PRIVATE CONTRACT NO. 9689

W.S. 93  
3 SHEETS, 6 PAGES  
SCALE: VERT. 1" = 8'  
HORIZ. 1" = 40'  
Oct. 1979  
PREPARED IN THE OFFICES OF  
V.T.N. LOS ANGELES  
5919 VAN NUYS BLVD.  
VAN NUYS, CA 91401  
BY: J. D. HARRIS  
REG. C.E. No. 17988

49129

B.M. BY 7554 ELEV. 928.207  
RDBM TAG 2 FT. S.C.B. @ S.E. COR.  
REYES ADDBE RD. OVERCROSSING  
& WESTBOUND ON-RAMP VENTURA FWY.  
10 FT. S. & 2 FT. E. OF  
MALIBU QUAD. 1972.

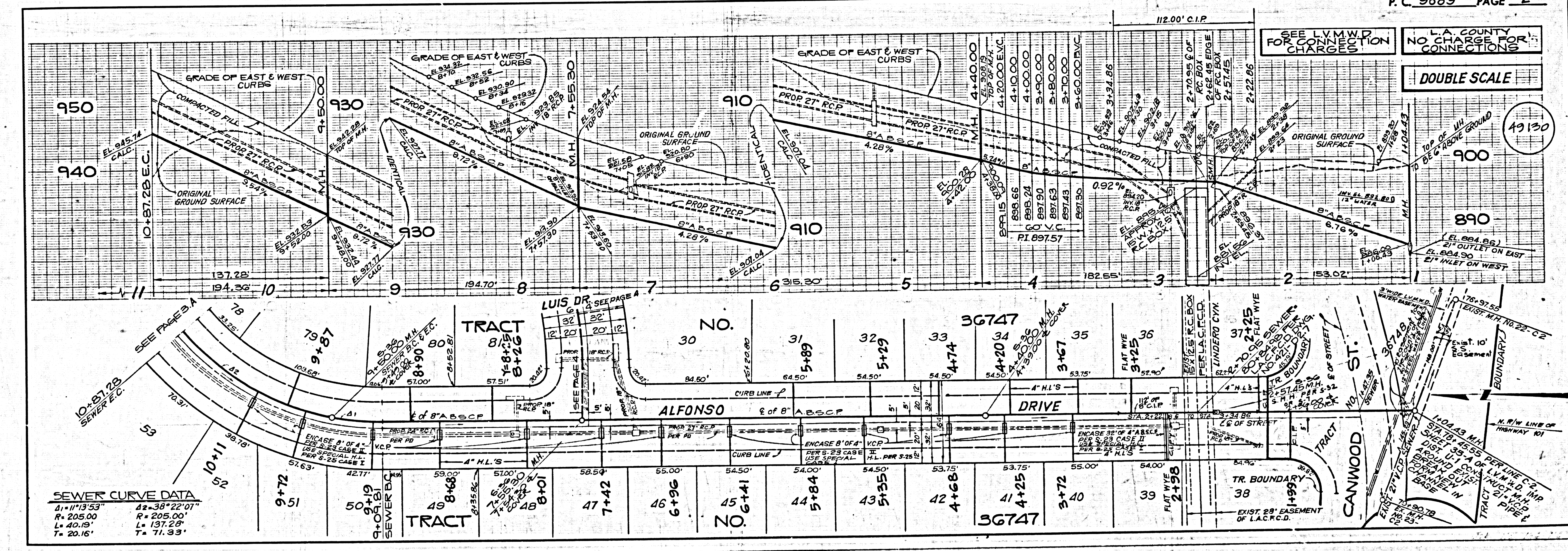


15. SPECIAL BACKFILL IN EASEMENT CONSTRUCTION  
BACKFILL TRENCH AND REPLACE OTHER EARTH SO AS TO ACHIEVE THE NATURAL OR FINISHED GRADES AND SLOPES SHOWN ON THE GRADING PLAN APPROVED FOR THIS DEVELOPMENT BY THE BUILDING AND SAFETY DIVISION.  
ALL BACKFILL AND EARTH REPLACED SHALL BE COMPACTED TO A MINIMUM OF 90% OF MAXIMUM DENSITY PER A.S.T.M. STANDARD METHOD OF TEST D698-57T AS MODIFIED. ACCEPTABLE CERTIFICATION OF SUCH COMPACTION SHALL BE SUBMITTED TO THE DESIGN DIVISION.

GENERAL NOTES:  
1. ELEVATIONS ARE IN FEET ABOVE U.S.C. & G.S. SEA LEVEL DATUM OF 1929.  
2. NO REVISIONS SHALL BE MADE IN THESE PLANS WITHOUT THE APPROVAL OF THE COUNTY ENGINEER.  
3. NO REPRESENTATIVE OF THE COUNTY ENGINEER WILL SURVEY OR LAY OUT ANY PORTION OF THE WORK.  
4. GRADES TO WHICH THE IMPROVEMENTS ARE TO BE CONSTRUCTED ARE SHOWN ON PLANS AND PROFILES. GRADE POINTS FOR TOP OF CURBS, CENTER LINE OF STREETS, OR CENTER LINE OF ALLEYS ARE SHOWN BY CIRCLES ON PROFILES AT ALL POINTS BETWEEN DESIGNATED POINTS. THE GRADE SHALL BE ESTABLISHED SO AS TO CONFORM TO A STRAIGHT LINE BETWEEN SAID DESIGNATED POINTS.  
5. THE PRIVATE ENGINEER SHALL FURNISH THE COUNTY ENGINEER WITH GRADE SHEETS AND STATIONING FOR ALL HOUSE LATERALS AND "T" OR "T" BRANCHES AND SHALL PROVIDE STAKES FOR THEM AT THEIR PROPER LOCATIONS WITH STATIONING PLAINLY MARKED. ALL HOUSE LATERALS SHALL BE CONTROLLED BY A STATIONING ALIGNMENT AT RIGHT ANGLES FROM THE MAIN LINE SEWER EXCEPT AS SHOWN ON THE PLANS. HOUSE LATERALS FROM CHIMNEYS SHALL NOT HAVE AN ANGLE OF LESS THAN 45° WITH THE MAIN LINE SEWER. ANY CHANGE IN ALIGNMENT SHALL BE REQUESTED IN WRITING BY THE PRIVATE ENGINEER.  
6. THE PRIVATE ENGINEER SHALL FURNISH THE HOUSE LATERAL DEPTH AT THE PROPERTY LINE BELOW THE TOP OF CURB ELEVATION FOR EACH HOUSE LATERAL ON THE GRADE SHEET.  
7. BEFORE WORK CAN BE STARTED, THE CONTRACTOR MUST OBTAIN A PERMIT TO EXCAVATE IN COUNTY STREETS FROM THE L.A. COUNTY ROAD DEPT., DISTRICT OFFICE NO. 4 AND PAY A FEE TO THE COUNTY ENGINEER, 550 SOUTH VERMONT, RM. 406, REGIONAL OFFICE, TO COVER THE COST OF CONSTRUCTION INSPECTION AND RECORD PLANS.  
8. IF WORK IS TO BE DONE IN A STATE HIGHWAY, A PERMIT MUST BE OBTAINED FROM THE STATE OF CALIFORNIA, DIVISION OF HIGHWAYS, 128 SOUTH BRINDLEY STREET, LOS ANGELES, CALIFORNIA.  
9. APPROVAL OF THIS PLAN BY THE COUNTY OF LOS ANGELES DOES NOT CONSTITUTE A REPRESENTATION AS TO THE ACCURACY OF THE LOCATION OF OR THE EXISTENCE OR NON-EXISTENCE OF ANY UNDERGROUND UTILITY PIPE, OR STRUCTURE WITHIN THE LIMITS OF THIS PROJECT. THIS NOTE APPLIES TO ALL SHEETS.  
10. REFER TO SECTION 17.04.01 OF THE STANDARD SPECIFICATIONS, REGARDING SAFETY BARRES.  
11. PRIOR TO THE ISSUANCE OF THE REQUIRED SEWER CONSTRUCTION PERMIT, THE CONTRACTOR SHALL OBTAIN AND FILE WITH THE COUNTY ENGINEER COPIES OF A PERMIT TO EXCAVATE IN COUNTY STREETS FROM THE LOS ANGELES COUNTY ROAD DEPARTMENT, A PERMIT FOR EXCAVATIONS AND TRENCHES FROM THE STATE OF CALIFORNIA, DIVISION OF INDUSTRIAL SAFETY AND A CERTIFICATE OF WORKER'S COMPENSATION INSURANCE WITH THE DEPARTMENT OF COUNTY ENGINEER, 550 SOUTH VERMONT, RM. 406, LOS ANGELES, CALIFORNIA 90020, NAMED AS THE CERTIFICATE HOLDER TO BE NOTIFIED 30 DAYS PRIOR TO CANCELLATION OF POLICY.

CONSTRUCTION NOTES:  
1. WORK SHALL BE CONSTRUCTED ACCORDING TO THE STANDARD SPECIFICATIONS FOR PUBLIC WORKS CONSTRUCTION (1979 EDITION) WITH SUPPLEMENTS AND COUNTY ENGINEER SPECIAL PROVISIONS FOR THE CONSTRUCTION OF SANITARY SEWERS DATED SEPTEMBER 21, 1976 AND SHALL BE PROSECUTED ONLY IN THE PRESENCE OF THE COUNTY ENGINEER.  
2. THE CONTRACTOR SHALL NOTIFY THE ENVIRONMENTAL DEVELOPMENT DIVISION BY TELEPHONE 213-738-2156 AT LEAST TWENTY FOUR HOURS BEFORE STARTING ANY WORK UNDER THIS CONTRACT.  
3. HOUSE LATERALS TO BE CONSTRUCTED WITH INVERTS AT PROPERTY LINE 6 FEET BELOW CURB GRADE EXCEPT AS NOTED.  
4. WYE OR TE BRANCHES MAY BE USED FOR CONNECTIONS TO MAINLINE SEWERS EXCEPT AS NOTED.  
5. ALL STRUCTURES SHALL BE BUILT WITH MANHOLES PER 2.0 OF PRECAST CONCRETE MANHOLES PER 2.34, EXCEPT AS NOTED.  
6. PROVIDE STAKES ON THE PROPERTY LINE OR PROPERTY LINES PRODUCED AT RIGHT ANGLES TO THE SEWER LINE AT THE CENTER LINE OF EACH MANHOLE.  
7. MAINLINE TO BE UNIMPROVED RIGHTS OF WAY TO BE 36 INCHES ABOVE FINISHED GRADE.  
8. VITRIFIED CLAY PIPE JOINTS SHALL BE TYPE "B", "C" OR "D" PER THE STANDARD SPECIFICATIONS SECTION 306-2.  
9. IF A COVER POLE IS WITHIN THREE FEET OF THE SEWER, THE SEWER SHALL BE ENCASED, PER 2.35, CASE II, TWO FEET ON EACH SIDE FROM THE POINT OF INTERFERENCE.  
10. IF DURING THE COURSE OF CONSTRUCTION IT IS DETERMINED THAT THERE IS LESS THAN FOUR FEET OF COVER OVER THE TOP OF A MAIN LINE OR HOUSE LATERAL V.C.P. SEWER WHICH IS NOT INDICATED ON THE PLANS, THE PIPE SHALL BE ENCASED PER 2.35, CASE II UNLESS OTHERWISE APPROVED BY THE COUNTY ENGINEER.  
11. ALL JOINTS BETWEEN CAST IRON PIPE AND VITRIFIED CLAY PIPE SHALL BE MADE WITH A RUBBER SLEEVE JOINT, TYPE "C" OR "D", WITH BURNING IF NECESSARY PER STANDARD SPECIFICATIONS SECTION 306-1.4.  
12. SEWERS TO BE TESTED FOR LEAKAGE PER SECTION 306-1.4 OF THE STANDARD SPECIFICATIONS AND SPECIAL PROVISIONS.  
13. RESURFACE ALL TRENCHES WITHIN PAVED AREAS TO MEET L.A. COUNTY ROAD DEPT. OR CALIFORNIA STATE HIGHWAY REQUIREMENTS IN ACCORDANCE WITH PERMITS.  
14. FULL COMPLIANCE WITH SECTION 306-1.5 OF THE SPECIAL PROVISIONS WILL BE REQUIRED FOR BACKFILL IN STREETS. CERTIFICATION OF BACKFILL COMPACTION AND SAND EQUIVALENTS BY A QUALIFIED, REGISTERED TESTING LABORATORY SHALL BE PROVIDED BY THE PERMITTEE PRIOR TO THE ISSUANCE OF A CERTIFICATE OF PARTIAL ACCEPTANCE.

THE FOLLOWING LATEST REVISED STANDARD PLANS ON FILE IN THE OFFICE OF THE COUNTY ENGINEER SHALL APPLY IN THE CONSTRUCTION OF THIS PROJECT:  
LEGEND ..... S-1  
MINIMUM PUBLIC SAFETY REQUIREMENTS ..... S-2  
BACK MANHOLE ..... S-3  
STANDARD MANHOLE SET ..... S-4  
BIDDING FOR SEWER PIPE ..... S-5  
CRACKING AND INFLAMMABILITY ..... S-6  
WYE OR TE BRANCH ..... S-7  
ALLOWABLE TRENCH WIDTHS ..... S-8  
LOCKING MANHOLE FRAME AND COVER ..... S-9  
NON-REINFORCED PRECAST CONCRETE MANHOLE ..... S-10  
WYE SADDLE FOR HOUSE LATERAL ..... S-11  
SPECIAL HOUSE LATERAL ..... S-12  
RECTANGULAR SHALLOW MANHOLE ..... S-13  
RECTANGULAR MANHOLE FRAME & COVER ..... S-14  
PRECAST CONCRETE SHALLOW MANHOLE ..... S-15  
COUNTY OF LOS ANGELES, CALIFORNIA  
STEPHEN J. KOONCE COUNTY ENGINEER  
APPROVED: [Signature] DATE: DEC 21, 1979  
CHECKED: [Signature] DATE: DEC 21, 1979  
REG. C.E. NO. 16853  
CALABASAS BLDG. DIST. 9.1.

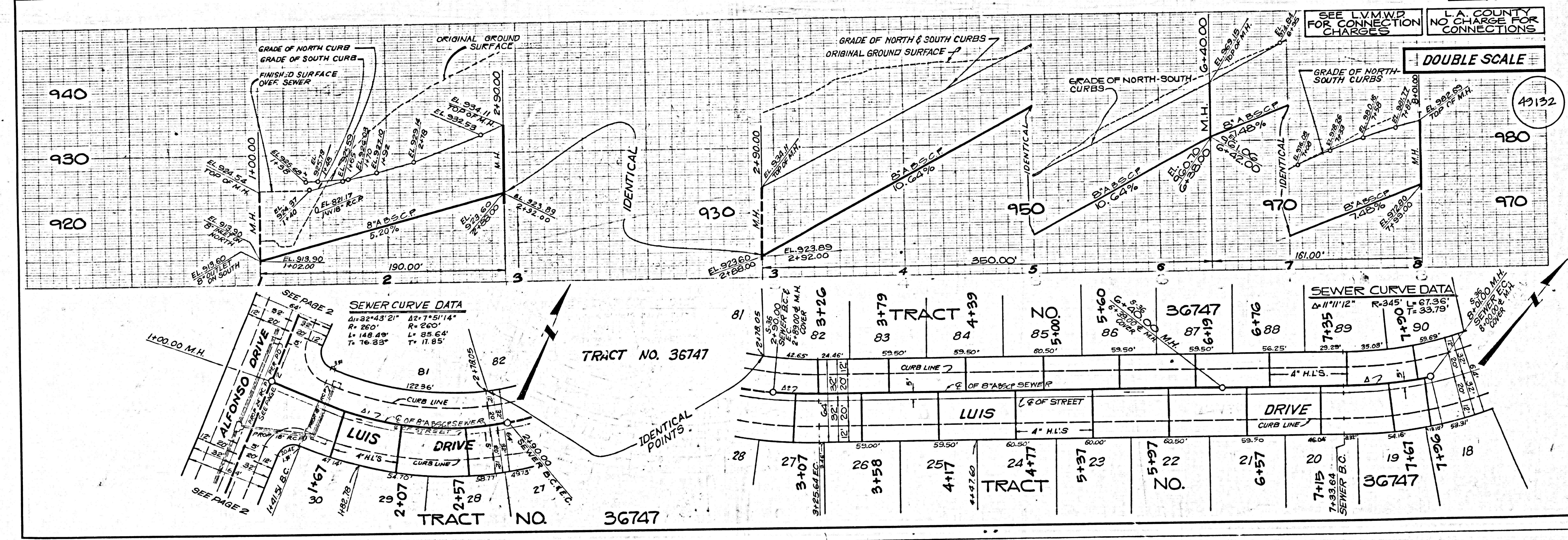
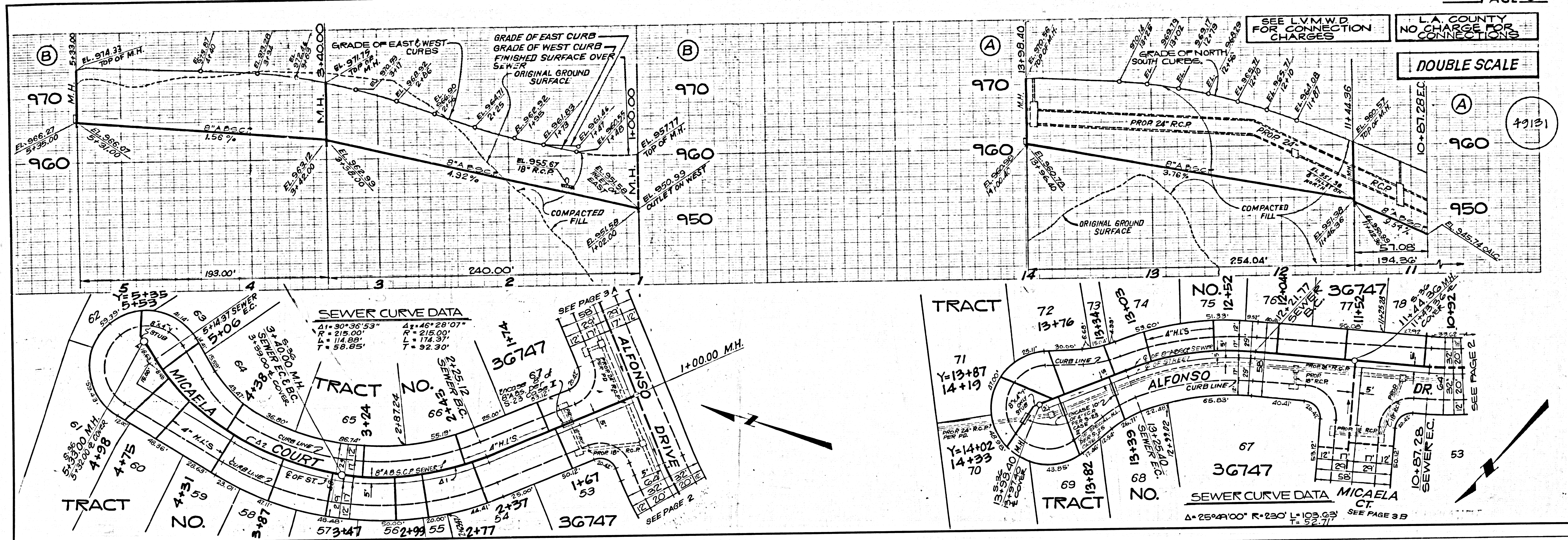


SEWER CURVE DATA

Δ1 = 11°13'53"	Δ2 = 38°22'07"
R = 205.00'	R = 205.00'
L1 = 40.19'	L2 = 131.23'
T1 = 20.16'	T2 = 71.33'

bc 088 09

36747 SEWER PLANS 12-11-79



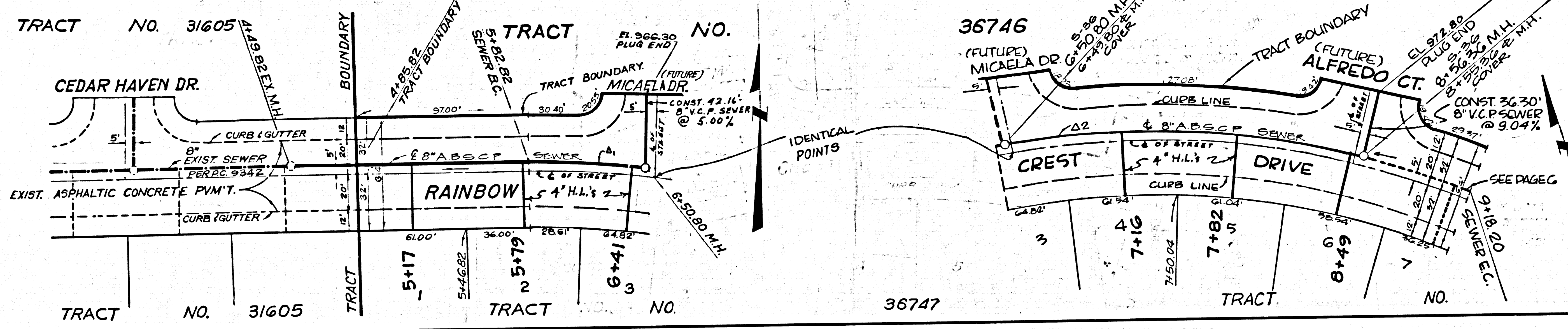
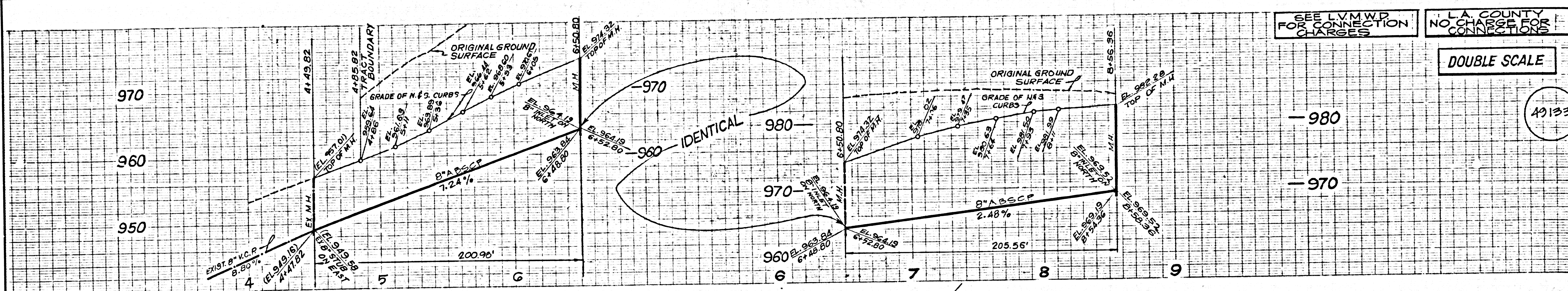
LC 3002

SEE L.V.M.W.D. FOR CONNECTION CHARGES

L.A. COUNTY NO CHARGE FOR CONNECTIONS

DOUBLE SCALE

49133



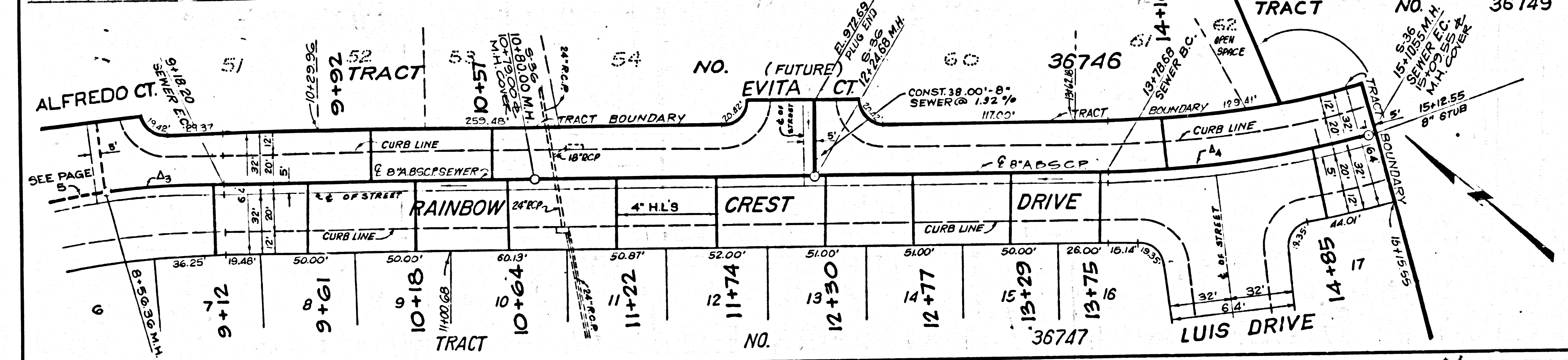
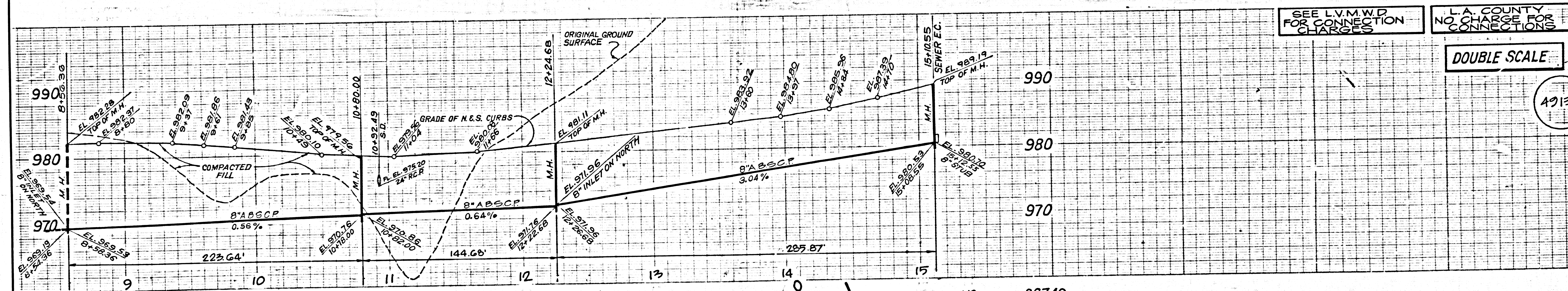
SEWER CURVE DATA  
 Δ1 = 8°50'50" R=505' L=7798' T=39.07'  
 Δ2 = 22°11'15" R=505' L=19956' T=99.02'

SEE L.V.M.W.D. FOR CONNECTION CHARGES

L.A. COUNTY NO CHARGE FOR CONNECTIONS

DOUBLE SCALE

49134



SEWER CURVE DATA  
 Δ1 = 7°00'58" R=505' L=6184' T=30.96'  
 Δ2 = 15°15'50" R=495' L=13187' T=66.33'

BC 2882