

TO BE CONSTRUCTED IN

DIAMOND BAR BLVD AND TRACT NO. 35589

PRIVATE CONTRACT NO. 9692

W.S. 37

3 SHEETS; 6 PAGES

47788

SCALE: VERT. 1"=4' HORIZ. 1"=40' MARCH, 1977 PREPARED IN THE OFFICES OF TERRA CIVIL ENGINEERS, INC. 3168 EAST LA PALMA AVE. SUITE 204 ANAHEIM, CALIF. 92806 (714) 632-6785 BY: [Signature] REG. C.E. No. 12872

THE FOLLOWING LATEST REVISED STANDARD PLANS ON FILE IN THE OFFICE OF THE COUNTY ENGINEER SHALL APPLY IN THE CONSTRUCTION OF THIS PROJECT.

Table with 2 columns: Item description and Reference number. Includes items like LEGEND, MINIMUM PUBLIC SAFETY REQUIREMENTS, RICE MANHOLE, STANDARD MANHOLE STEP, BEDDING FOR SEWER PIPE, CRABBING AND ENCASEMENT, WYE ON THE SUPPORT, ALLOWABLE TRENCH WIDTHS, LOCKING MANHOLE FRAME AND COVER, and NON-BENEFICIAL PRECAST CONCRETE MANHOLE.

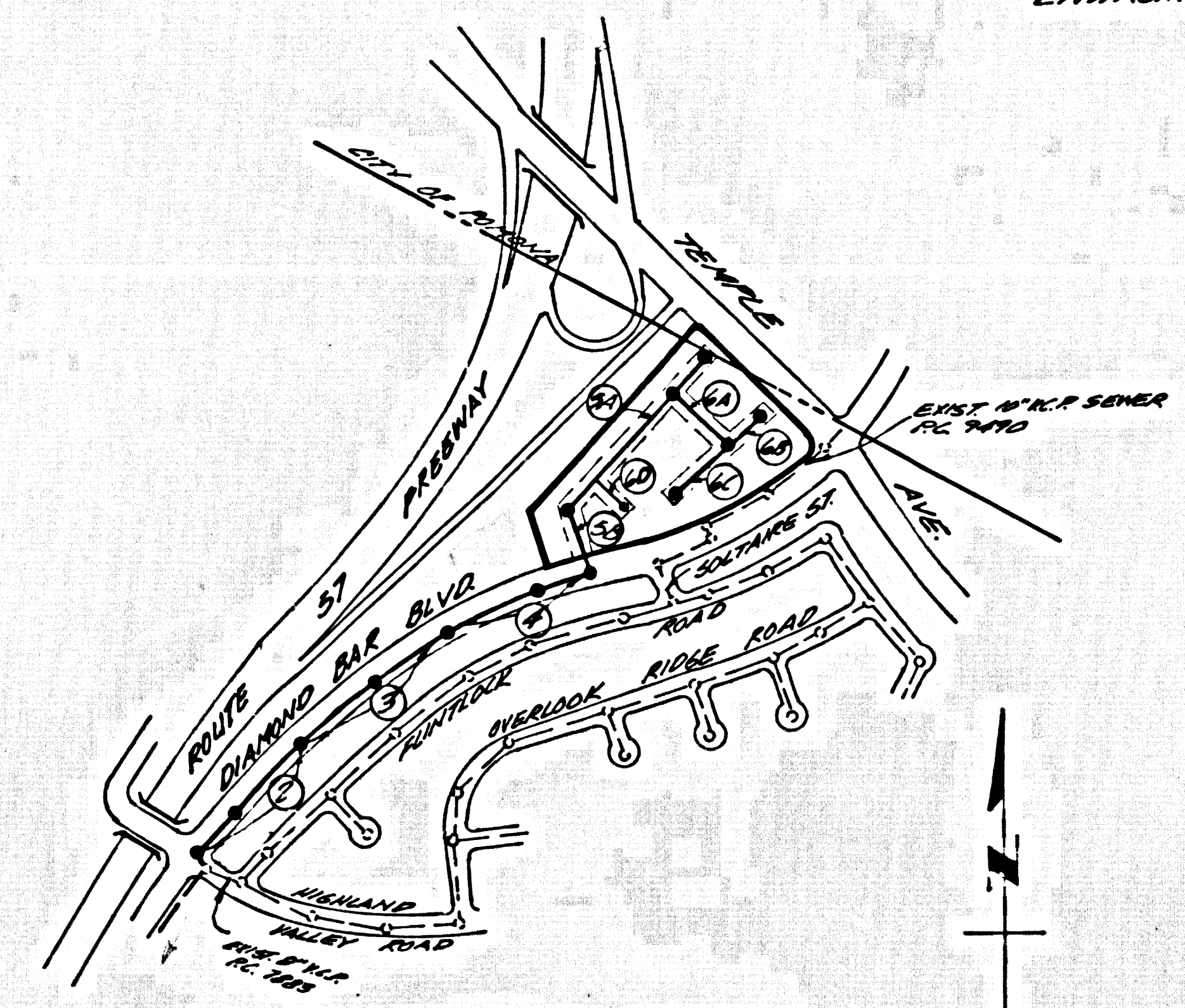
COUNTY OF LOS ANGELES, CALIFORNIA STEPHEN J. KOONCE COUNTY ENGINEER WALTER GARRISON, CHIEF ENGINEER APPROVED Gordon W. Knigge 8/6/77 APPROVED Frank R. Loda 9/6/77 CHECKED Ralph Davis 8/16/77 REG. C.E. NO. 16883 SAN DIMAS BLDG. DIST. 10

B.M. C.G. 3922 ELEV. 872.750 L.A. COUNTY ROAD DEPT. DATUM 1975 S.V.L. ON CURB 3.47' S.I.C.R. 30' TO N.Y. 1.92' FT. S.V. CL. INT. DIAMOND BAR BLVD & SOLTAIRE ST. OTTERBEIN QUAD. 19 75

SPECIAL BACKFILL IN EASEMENT CONSTRUCTION BACKFILL TRIMMED AND REGRADE OTHER EARTH SOAS TO ACQUIRE THE APPEARANCE OF FINISHED GRADES AND SHOULD SURMOUNT THE GRADING PLAN APPROVED FOR THIS DEVELOPMENT BY THE ENGINEER AND SANITARY DIVISION. ALL BACKFILL AND EARTH REGRADED SHALL BE COMPACTED TO A MINIMUM OF 90% OF MAXIMUM DENSITY OR A.S.T.M. STANDARD METHOD OF TEST PERM-577 AS MAINTAINED. ACCEPTABLE COMPACTED EARTH FOR CONSTRUCTION SHALL BE SUBMITTED TO THE ENVIRONMENTAL DEVELOPMENT DIVISION.

GENERAL NOTES: 1. ELEVATIONS ARE IN FEET ABOVE U.S.C. & G.S. SEA LEVEL DATUM OF 1929. 2. NO REVISIONS SHALL BE MADE IN THESE PLANS WITHOUT THE APPROVAL OF THE COUNTY ENGINEER. 3. NO REPRESENTATIVE OF THE COUNTY ENGINEER WILL SURVEY OR LAY OUT ANY PORTION OF THE WORK. 4. GRADES TO WHICH THIS IMPROVEMENT IS TO BE CONSTRUCTED IS SHOWN ON PLANS AND PROFILES. GRADE POINTS FOR TOP OF CURB, CENTER LINE OF STREETS, OR CENTER LINE OF ALLEYS ARE SHOWN BY CIRCLES ON PROFILES AT ALL POINTS BETWEEN DESIGNATED POINTS THE GRADE SHALL BE ESTABLISHED SO AS TO CONFORM TO A STRAIGHT LINE DRAWN BETWEEN SAID DESIGNATED POINTS. 5. THE PRIVATE ENGINEER SHALL FURNISH THE COUNTY ENGINEER WITH GRADE SHEETS AND STATIONING FOR ALL HOUSE LATERALS AND "T" OR "Y" BRANCHES AND SHALL PROVIDE STAKES FOR THEM AT THEIR PROPER LOCATIONS WITH STATIONING PLAINLY MARKED. ALL HOUSE LATERALS SHALL BE CONSTRUCTED IN A STRAIGHT ALIGNMENT AT RIGHT ANGLES FROM THE MAIN LINE SEWER EXCEPT AS SHOWN ON THE PLANS. HOUSE LATERALS FROM CHIMNEYS SHALL NOT HAVE AN ANGLE OF LESS THAN 45° WITH THE MAIN LINE SEWER. ANY CHANGE IN ALIGNMENT SHALL BE REQUESTED IN WRITING BY THE PRIVATE ENGINEER. 6. THE PRIVATE ENGINEER SHALL FURNISH THE HOUSE LATERAL DEPTH AT THE PROPERTY LINE BELOW THE TOP OF CURB ELEVATION FOR EACH HOUSE LATERAL ON THE GRADE SHEET. 7. BEFORE WORK CAN BE STARTED, THE CONTRACTOR MUST OBTAIN A PERMIT TO EXCAVATE IN COUNTY STREETS FROM THE L.A. COUNTY ROAD DEPT., DISTRICT OFFICE NO. 1 AND PAY A FEE TO THE COUNTY ENGINEER, 215 S. BOWEN AND SAN ANGELES REGIONAL OFFICE, TO COVER THE COST OF CONSTRUCTION INSPECTION AND RECORD PLANS, OR 200 S. IMPERIAL AVE., R.A. 8. IF WORK IS TO BE DONE IN A STATE HIGHWAY, A PERMIT MUST BE OBTAINED FROM THE STATE OF CALIFORNIA, DIVISION OF HIGHWAYS, 120 SOUTH SPRING STREET, LOS ANGELES, CALIFORNIA. 9. APPROVAL OF THIS PLAN BY THE COUNTY OF LOS ANGELES DOES NOT CONSTITUTE A REPRESENTATION AS TO THE ACCURACY OF THE LOCATION OF OR THE EXISTENCE OR NON-EXISTENCE OF ANY UNDERGROUND UTILITY PIPE, OR STRUCTURE WITHIN THE LIMITS OF THIS PROJECT. THIS NOTE APPLIES TO ALL PAGES. 10. REFER TO SECTION 7.1.1.1 OF THE STANDARD SPECIFICATIONS, REGARDING SAFETY ORDERS. 11. PRIOR TO THE ISSUANCE OF THE APPROVED SEWER CONSTRUCTION PERMIT, THE CONTRACTOR SHALL OBTAIN AND FILE WITH COUNTY ENGINEER COPIES OF A RECENTLY FILED STATEMENT OF WORKING INTEREST IN THE PROPERTY SUBJECTS HEREON, THE LOS ANGELES COUNTY ROAD DEPARTMENT, A PERMIT FOR EXCAVATIONS AND REPAIRS FROM THE STATE OF CALIFORNIA, DIVISION OF INDUSTRIAL SAFETY AND CONSTRUCTION, AN APPROVED AND MAINTAINED RECORD MAP FROM THE DEPARTMENT OF COUNTY ENGINEER, 530 SOUTH WASHINGTON, LOS ANGELES, CALIFORNIA, DATED AS THE CONTRACTOR HEREON. TO BE RETURNED TO SAID TRACT TO CONSTRUCTION OF PERMIT.

CONSTRUCTION NOTES: 1. WORK SHALL BE CONSTRUCTED ACCORDING TO THE STANDARD SPECIFICATIONS FOR PUBLIC WORKS CONSTRUCTION 1976 EDITION WITH 1977 SUPPLEMENTS AND COUNTY ENGINEER SPECIAL PROVISIONS FOR THE CONSTRUCTION OF SANITARY SEWERS DATED 8/20/76 AND SHALL BE PROSECUTED ONLY IN THE PRESENCE OF THE COUNTY ENGINEER. 2. THE CONTRACTOR SHALL NOTIFY THE SANITARY DIVISION BY TELEPHONE, 724-2346, AT LEAST TWENTY-FOUR HOURS BEFORE STARTING ANY WORK UNDER THIS CONTRACT. 3. HOUSE LATERALS TO BE CONSTRUCTED WITH INVERTS AT PROPERTY LINE & FEET BELOW CURB GRADE EXCEPT AS NOTED. 4. WYE ON THE BRANCHES MAY BE USED FOR CONNECTIONS TO MAINLINE SEWERS EXCEPT AS NOTED. 5. ALL STRUCTURES SHALL BE EITHER RICE MANHOLES PER 8.3 OR PRECAST CONCRETE MANHOLES PER 8.36, EXCEPT AS NOTED. 6. PROVIDE STAKES ON THE PROPERTY LINE OR PROPERTY LINES PRODUCED AT RIGHT ANGLES TO THE SEWER LINE AT THE CENTER LINE OF EACH MANHOLE. 7. MANHOLE TOPS IN UNIMPROVED RIGHTS OF WAY TO BE SIX INCHES ABOVE FINISHED GRADE. 8. VITRIFIED CLAY PIPE JOINTS SHALL BE THE "C" OR "D" PER STANDARD SPECIFICATIONS SECTION 308-3. 9. IF A POWER POLE IS WITHIN THREE FEET OF THE SEWER, THE SEWER SHALL BE ENCASED, PER 8.23, CASE II, TWO FEET ON EACH SIDE FROM THE POINT OF INTERFERENCE. 10. IF DURING THE COURSE OF CONSTRUCTION IT IS DETERMINED THAT THERE IS LESS THAN FOUR FEET OF COVER OVER THE TOP OF A MAIN LINE OR HOUSE LATERAL V.C.P. SEWER WHICH IS NOT INDICATED ON THE PLANS, THE PIPE SHALL BE ENCASED PER 8.23, CASE II UNLESS OTHERWISE APPROVED BY THE COUNTY ENGINEER. 11. ALL JOINTS BETWEEN CAST IRON PIPE AND VITRIFIED CLAY PIPE SHALL BE MADE WITH A RUBBER SLEEVE JOINT, TYPE "C" OR "D", WITH BUSHING IF NECESSARY PER STANDARD SPECIFICATIONS, SECTION 308-3. 12. SEWERS TO BE TESTED FOR LEAKAGE PER SECTION 308-4.6 OF THE STANDARD SPECIFICATIONS AND SPECIAL PROVISIONS. 13. RESURFACE ALL TRENCHES WITHIN PAVED AREAS TO MEET L.A. COUNTY ROAD DEPT. OR CALIFORNIA STATE HIGHWAY REQUIREMENTS IN ACCORDANCE WITH PERMITS. 14. FULL COMPLIANCE WITH SECTION 308-3.1.2.1.2 OF THE SPECIAL PROVISIONS WILL BE REQUIRED FOR BACKFILL IN STREETS. CERTIFICATION OF BACKFILL COMPACTION AND SAND EQUIVALENTS BY A QUALIFIED, REGISTERED TESTING LABORATORY SHALL BE PROVIDED BY THE PERMITTEE PRIOR TO THE ISSUANCE OF A CERTIFICATE OF PARTIAL ACCEPTANCE.



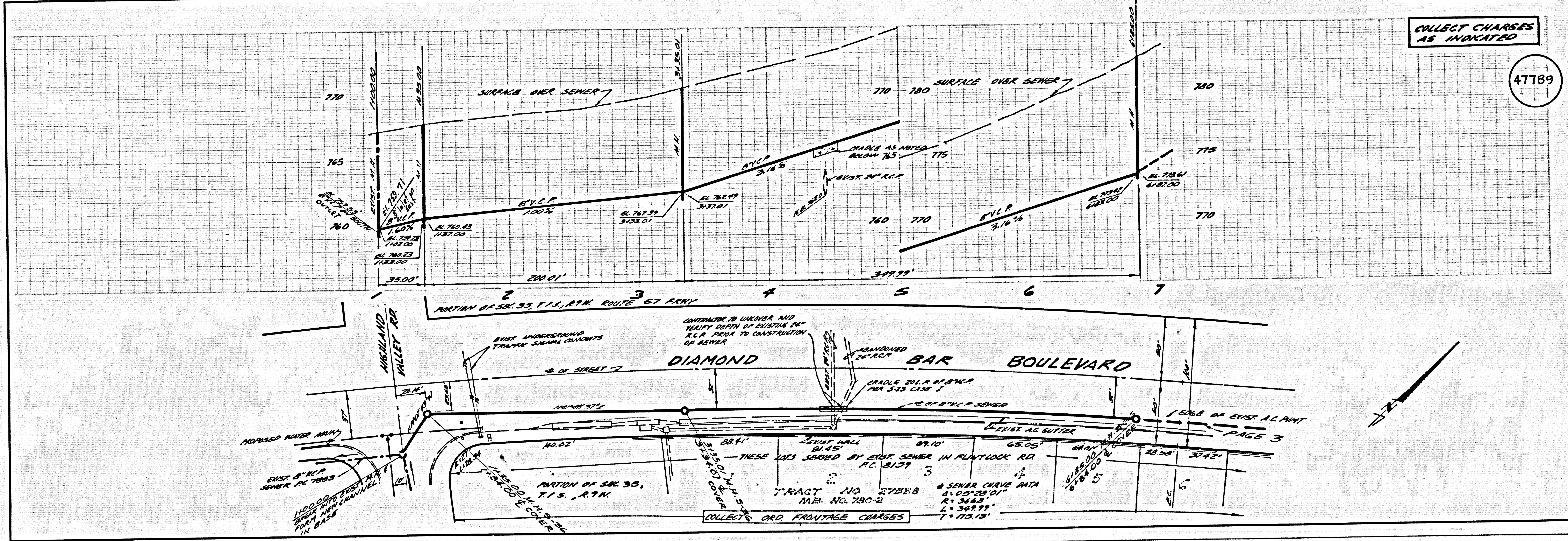
INDEX MAP SCALE: 1"=600' TRACT NO. 35589

WHERE (PRINTED) WORK IS CONSTRUCTED ON A COUNTY SANITATION DISTRICT SEWER AND PRIOR TO FINAL COMPLETION OF THE PROJECT SANITATION DISTRICT INSPECTOR SHALL BE NOTIFIED BY PHONE 922-2956 SO THAT REQUIRED INSPECTION CAN BE MADE.

NO CONNECTION FOR THE DISPOSAL OF INDUSTRIAL WASTES SHALL BE MADE TO SEWERS SHOWN ON THESE DRAWINGS UNTIL A PERMIT FOR INDUSTRIAL WASTE WATER DISCHARGE HAS BEEN ISSUED BY THE SANITATION DISTRICTS NEW SAID CONNECTION.

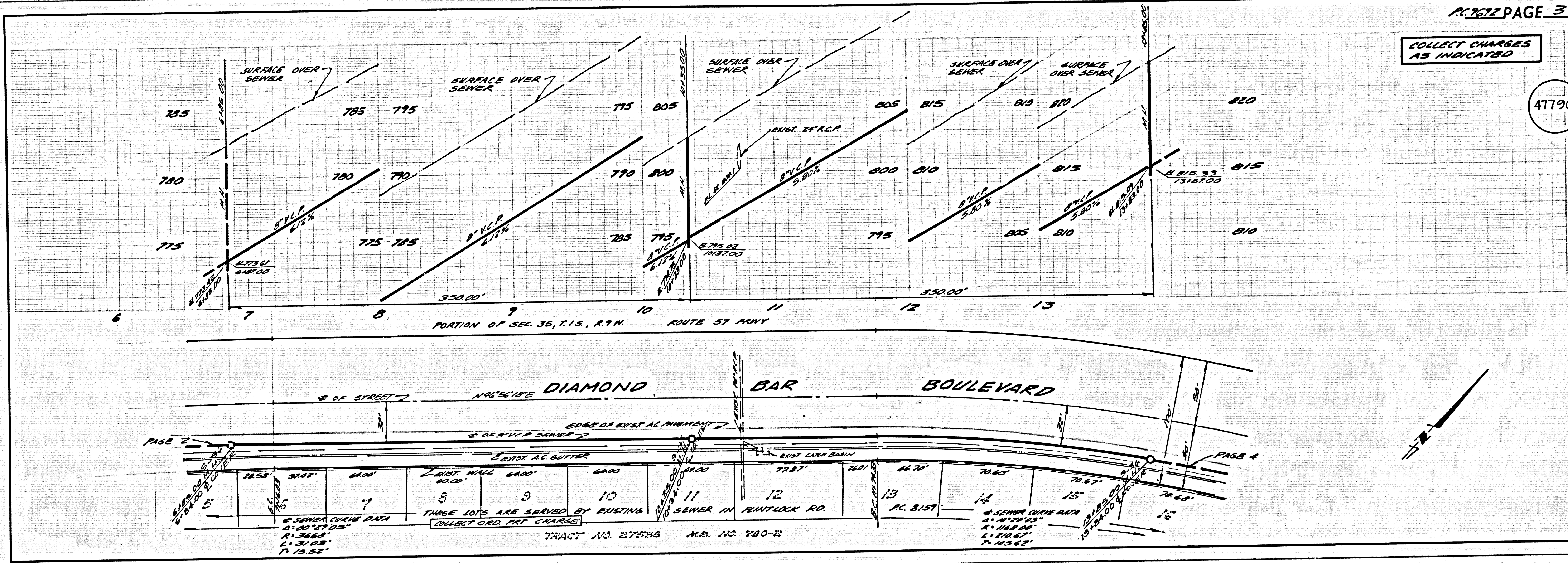
COLLECT CHARGES AS INDICATED

47789



COLLECT CHARGES AS INDICATED

47790



COLLECT CHARGES AS INDICATED

47791

