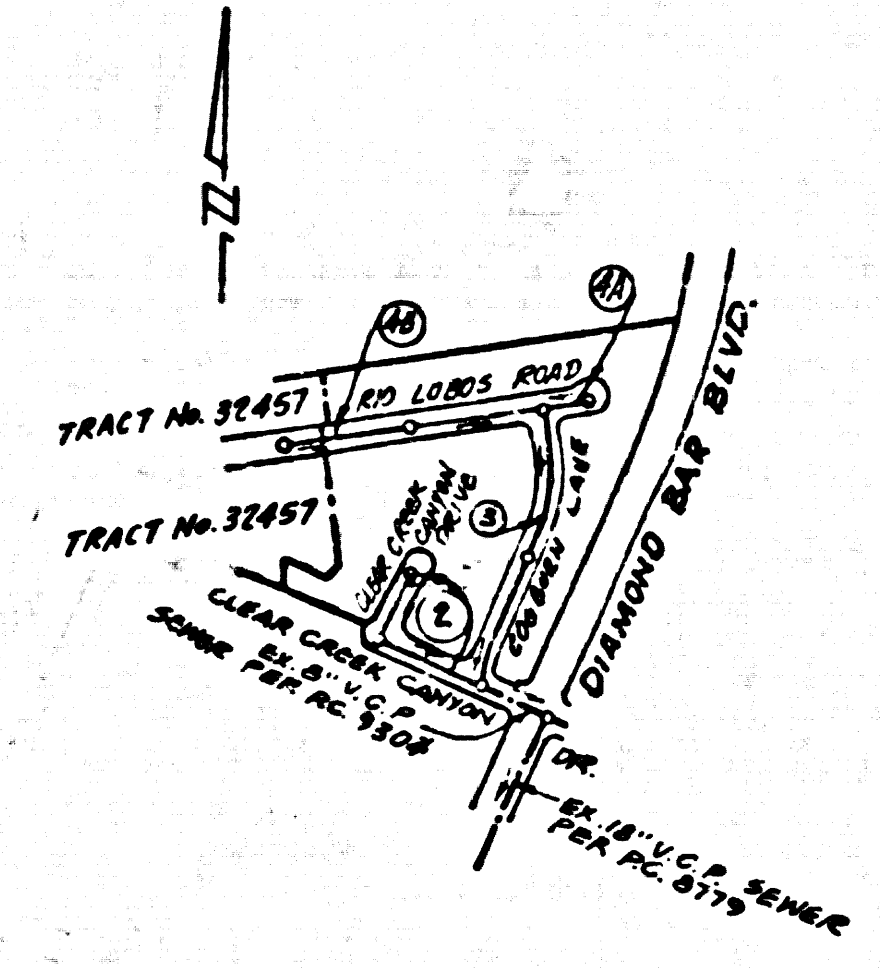


B.M. C.G. 3900 ELEV. 742.603
 R.D.B.M. tag in N. edge C.B. 65 ft
 S. of 42 ft. W. of Int. Golden
 Springs Dr. & Grand Ave.
 Offerbein QUAD. 1975 (ADJ.)



Index Map
Tract No 37034
 Scale: 1"=600'
 P.C. 9694

Note: Numbers in circles indicate page numbers

REVISIONS	DATE
1. CONSTRUCT H.L.'s FOR LOTS 1, 2, 36 & 37 OF TRACT NO. 37034, ON PAGES 1 & 2.	
2. REVISED BY: M.A. Miller, R.E. NO. 2250A	
3. APPROVED: S.G. Miller, DATE 2-18-84	

BEFORE BREAKING INTO OR CONSTRUCTION ON A COUNTY SANITATION DISTRICT SEWER AND PRIOR TO FINAL ACCEPTANCE OF THE PROJECT, SANITATION DISTRICT INSPECTOR SHALL BE NOTIFIED BY THE CONTRACTOR BY REGISTERED MAIL, SO THAT REGISTERED INSPECTION CAN BE MADE.

NO CONNECTION FOR THE DISPOSAL OF INDUSTRIAL WASTES SHALL BE MADE TO SEWER FROM OR TEST DRAINING UNTIL PERMIT BY THE SANITATION DISTRICT FOR SAID CONNECTION.

- GENERAL NOTES: DOUBLE SCALE**
- ELEVATIONS ARE IN FEET ABOVE U.S.C. & G.S. SEA LEVEL DATUM OF 1929.
 - NO REVISIONS SHALL BE MADE IN THESE PLANS WITHOUT THE APPROVAL OF THE COUNTY ENGINEER.
 - NO REPRESENTATIVE OF THE COUNTY ENGINEER WILL SURVEY OR LAY OUT ANY PORTION OF THE WORK.
 - GRADES TO WHICH THIS IMPROVEMENT IS TO BE CONSTRUCTED ARE SHOWN ON PLANS AND PROFILES. GRADE POINTS FOR TOP OF CURBS, CENTER LINE OF STREETS, OR CENTER LINE OF ALLEYS ARE SHOWN BY CIRCLES ON PROFILES. AT ALL POINTS BETWEEN DESIGNATED POINTS THE GRADE SHALL BE ESTABLISHED SO AS TO CONFORM TO A STRAIGHT LINE DRAWN BETWEEN SAID DESIGNATED POINTS.
 - THE PRIVATE ENGINEER SHALL FURNISH THE COUNTY ENGINEER WITH GRADE SHEETS AND STATIONING FOR ALL HOUSE LATERALS AND "T" OR "Y" BRANCHES AND SHALL PROVIDE STAKES PLUS THEM AT THEIR PROPER LOCATIONS WITH STATIONING PLAINLY MARKED. ALL HOUSE LATERALS SHALL BE CONSTRUCTED IN A STRAIGHT ALIGNMENT AT RIGHT ANGLES FROM THE MAIN LINE SEWER EXCEPT AS SHOWN ON THE PLANS. HOUSE LATERALS FROM CHIMNEYS SHALL NOT HAVE AN ANGLE OF LESS THAN 45° WITH THE MAIN LINE SEWER. ANY CHANGE IN ALIGNMENT SHALL BE REQUESTED IN WRITING BY THE PRIVATE ENGINEER.
 - THE PRIVATE ENGINEER SHALL FURNISH THE HOUSE LATERAL DEPTH AT THE PROPERTY LINE BELOW THE TOP OF CURB ELEVATION FOR EACH HOUSE LATERAL ON THE GRADE SHEET.
 - BEFORE WORK CAN BE STARTED, THE CONTRACTOR MUST OBTAIN A PERMIT TO EXCAVATE IN COUNTY STREETS FROM THE L.A. COUNTY ROAD DEPT., DISTRICT OFFICE NO. 1, AND PAY A FEE TO THE COUNTY ENGINEER, 301 E. BONITA AVE., SAN DIMAS REGIONAL OFFICE, TO COVER THE COST OF CONSTRUCTION INSPECTION AND RECORD PLANS.
 - IF WORK IS TO BE DONE IN A STATE HIGHWAY, A PERMIT MUST BE OBTAINED FROM THE STATE OF CALIFORNIA, DIVISION OF HIGHWAYS, 120 SOUTH SPRING STREET, LOS ANGELES, CALIFORNIA.
 - APPROVAL OF THIS PLAN BY THE COUNTY OF LOS ANGELES DOES NOT CONSTITUTE A REPRESENTATION AS TO THE ACCURACY OF THE LOCATION OF OR THE EXISTENCE OR NON-EXISTENCE OF ANY UNDERGROUND UTILITY PIPE, OR STRUCTURE WITHIN THE LIMITS OF THE PROJECT. THIS NOTICE APPLIES TO ALL PAGES.
 - REFER TO SECTION 736.4.1 OF THE STANDARD SPECIFICATIONS, REGARDING SAFETY ORDERS.
 - PRIOR TO ISSUANCE OF THE REQUIRED SEWER CONSTRUCTION PERMIT BY THE COUNTY ENGINEER, THE CONTRACTOR SHALL OBTAIN A PERMIT TO EXCAVATE FROM THE STATE OF CALIFORNIA, DEPARTMENT OF INDUSTRIAL RELATIONS DIVISION OF SAFETY, AND SHALL FILE A CERTIFICATE OF WORKERS COMPENSATION WITH THE COUNTY ENGINEER.
 - INDICATES DEPTH OF H.L. AT P.I.

- CONSTRUCTION NOTES:**
- WORK SHALL BE CONSTRUCTED ACCORDING TO THE STANDARD SPECIFICATIONS FOR PUBLIC WORKS CONSTRUCTION (1979 EDITION WITH 1980 SUPPLEMENT) AND COUNTY ENGINEER SPECIAL PROVISIONS FOR THE CONSTRUCTION OF SANITARY SEWERS DATED SEPTEMBER 1978 AND SHALL BE PROSECUTED ONLY IN THE PRESENCE OF THE COUNTY ENGINEER.
 - THE CONTRACTOR SHALL NOTIFY THE ENVIRONMENTAL DEVELOPMENT DIVISION, PARAGRAPH (B)(1)(7)(B) 215(A) AT LEAST TWENTY-FOUR HOURS BEFORE STARTING ANY WORK UNDER THIS CONTRACT.
 - HOUSE LATERALS TO BE CONSTRUCTED WITH BYPASSES AS PROPORTION LINE & FEET BELOW CURB GRADE EXCEPT AS NOTED.
 - PIPE ON THE BRANCHES MAY BE USED FOR CONNECTION TO MAINLINE SEWERS EXCEPT AS NOTED.
 - ALL STRUCTURES SHALL BE BUILT BRICK MANHOLES PER S-3 OR PRECAST CONCRETE MANHOLES PER S-3A, EXCEPT AS NOTED.
 - PROVIDE STAKES ON THE PROPERTY LINE OR PROPERTY LINES PRODUCED AT RIGHT ANGLES TO THE SEWER LINE AT THE CENTER LINE OF EACH MANHOLE.
 - MANHOLE TOPS IN UNIMPROVED AREAS OF WAY TO BE SET SIX INCHES ABOVE FINISHED GRADE.
 - VITRIFIED CLAY PIPE JOINTS SHALL BE TYPE "B" OR "C" PER STANDARD SPECIFICATIONS SECTION 300-2.
 - IF A POWER POLE IS WITHIN THREE FEET OF THE SEWER, THE SEWER SHALL BE ENCASED, PER S-23, CASE 2, TWO FEET ON EACH SIDE FROM THE POINT OF INTERFERENCE.
 - IF DURING THE COURSE OF CONSTRUCTION IT IS DETERMINED THAT THERE IS LESS THAN FOUR FEET OF COVER OVER THE TOP OF A MAIN LINE OR HOUSE LATERAL V.C.P. SEWER WHICH IS NOT ENCASED ON THE PLANS, THE PIPE SHALL BE ENCASED PER S-23, CASE 2, UNLESS OTHERWISE APPROVED BY THE COUNTY ENGINEER.
 - ALL JOINTS BETWEEN CLAY PIPE AND VITRIFIED CLAY PIPE SHALL BE MADE WITH A RUBBER SLEEVE JOINT, TYPE "C" OR "D", WITH GASKETS IF NECESSARY PER STANDARD SPECIFICATIONS, SECTION 300-2.
 - SEWERS TO BE TESTED FOR LEAKAGE PER SECTION 300-1.6 OF THE STANDARD SPECIFICATIONS AND SPECIAL PROVISIONS.
 - RESURFACE ALL TRENCHES WITHIN PAVED AREAS TO MEET L.A. COUNTY ROAD DEPT. OR CALIFORNIA STATE HIGHWAY REQUIREMENTS IN ACCORDANCE WITH PERMITS.
 - FULL COMPLIANCE WITH SECTION 301-1.6 OF THE SPECIAL PROVISIONS WILL BE REQUIRED FOR BACKFILL IN STREETS. CERTIFICATION OF BACKFILL COMPACTION AND SAND EQUIVALENTS BY A QUALIFIED, REGISTERED TESTING LABORATORY SHALL BE PROVIDED BY THE CONTRACTOR PRIOR TO THE ISSUANCE OF A CERTIFICATE OF PARTIAL ACCEPTANCE.
 - SPECIAL BACKFILL IN DESIGNATED AREAS:
 (A) BACKFILL TRENCH AND ROADWAY UNDER EXISTING PAVED AREAS TO BE CONFORM TO THE NATURAL OR FINISHED GRADES AND SURFACE FINISH IN THE DESIGNING PLANS APPROVED FOR THIS TRACT MAP BY THE BUILDING AND SAFETY DIVISION.
 (B) BACKFILL AND SANDY AREAS SHALL BE CONFINED TO A MAXIMUM DEPTH OF SIX INCHES UNLESS OTHERWISE PERMITTED BY THE COUNTY ENGINEER.
 (C) ALL BACKFILL AND SANDY AREAS SHALL BE CONFINED TO A MAXIMUM DEPTH OF SIX INCHES UNLESS OTHERWISE PERMITTED BY THE COUNTY ENGINEER.
 (D) ALL BACKFILL AND SANDY AREAS SHALL BE CONFINED TO A MAXIMUM DEPTH OF SIX INCHES UNLESS OTHERWISE PERMITTED BY THE COUNTY ENGINEER.
 (E) ALL BACKFILL AND SANDY AREAS SHALL BE CONFINED TO A MAXIMUM DEPTH OF SIX INCHES UNLESS OTHERWISE PERMITTED BY THE COUNTY ENGINEER.

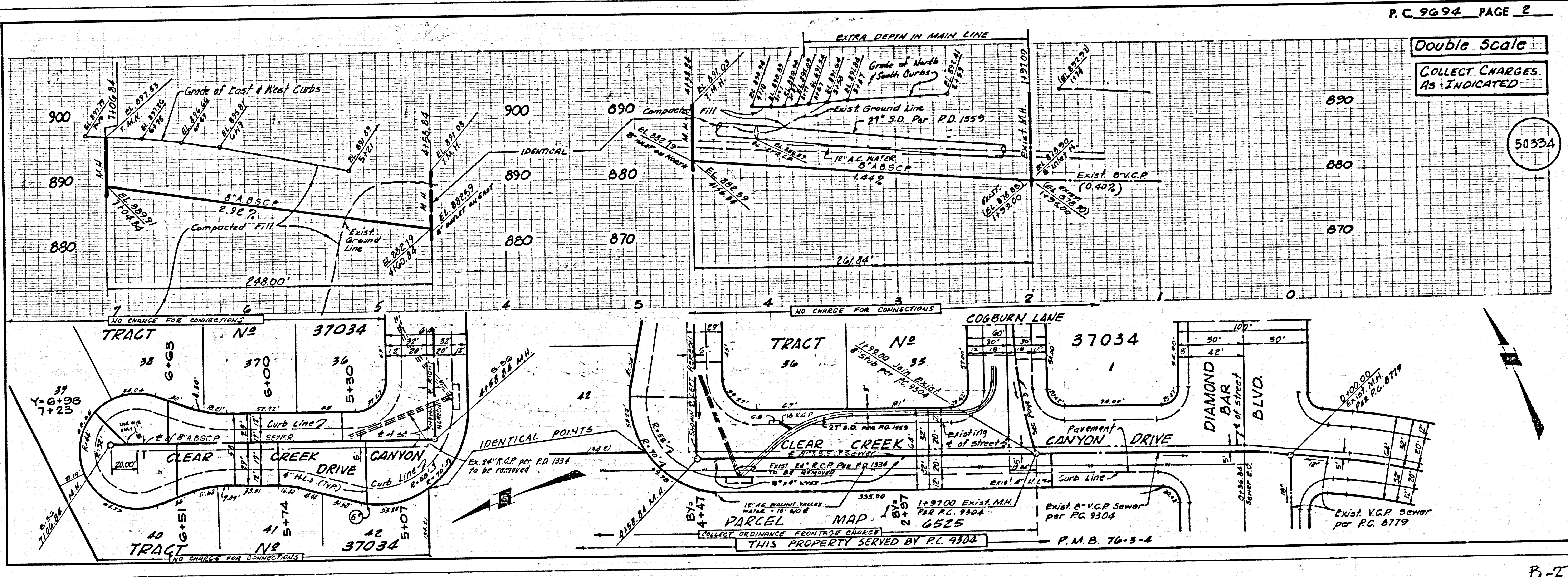
PROFILE, ALIGNMENT AND GRADE OF
SANITARY SEWERS PAGE 1
 TO BE CONSTRUCTED IN
TRACT NO 37034
 PRIVATE CONTRACT NO. 9694

W.S. 39-C-3
 2 SHEETS, 4 PAGES
 SCALE: VERT. 1"=4' HORIZ. 1"=40'
 OCTOBER, 1979
 PREPARED IN THE OFFICES OF
Largo Engineering
 17630 S. Prairie Ave., Torrance, Calif. 90504
 BY: C.M. Lead
 REG. C. E. No. 19167

THE FOLLOWING LATEST REVISED STANDARD PLANS ON FILE IN THE OFFICE OF THE COUNTY ENGINEER SHALL APPLY IN THE CONSTRUCTION OF THIS PROJECT.

LEGEND	S-1
MINIMUM PUBLIC SAFETY REQUIREMENTS	S-2
BRICK MANHOLE	S-3
STANDARD MANHOLE STEP	S-3A
SEWING FOR SEWER PIPE	S-3B
CASTING AND ENCASEMENT	S-3C
PIPE OF THE SUPPORT	S-3D
ALLOWABLE TRENCH WIDTHS	S-3E
LOCKING MANHOLE PLANS AND COVERS	S-3F
NON-REINFORCED PRECAST CONCRETE MANHOLE	S-3G

COUNTY OF LOS ANGELES, CALIFORNIA
 STEPHEN J. KOONCE, COUNTY ENGINEER WALTER E. GARRISON, CHIEF ENGINEER
 APPROVED: Sam Miller 9/1/80 APPROVED: Alan M. Fuller 9/1/80
 SAN DIMAS REGIONAL ENGINEER (DATE) OFFICE ENGINEER
 CHECKED: Ralph David Hunt 8/14/80
 REG. C.E. NO. 16813 DATE
 SAN DIMAS BLDG. DIST. 10.00



Double Scale
 COLLECT CHARGES AS INDICATED

4232 09 . 42012 ON 7 2011

