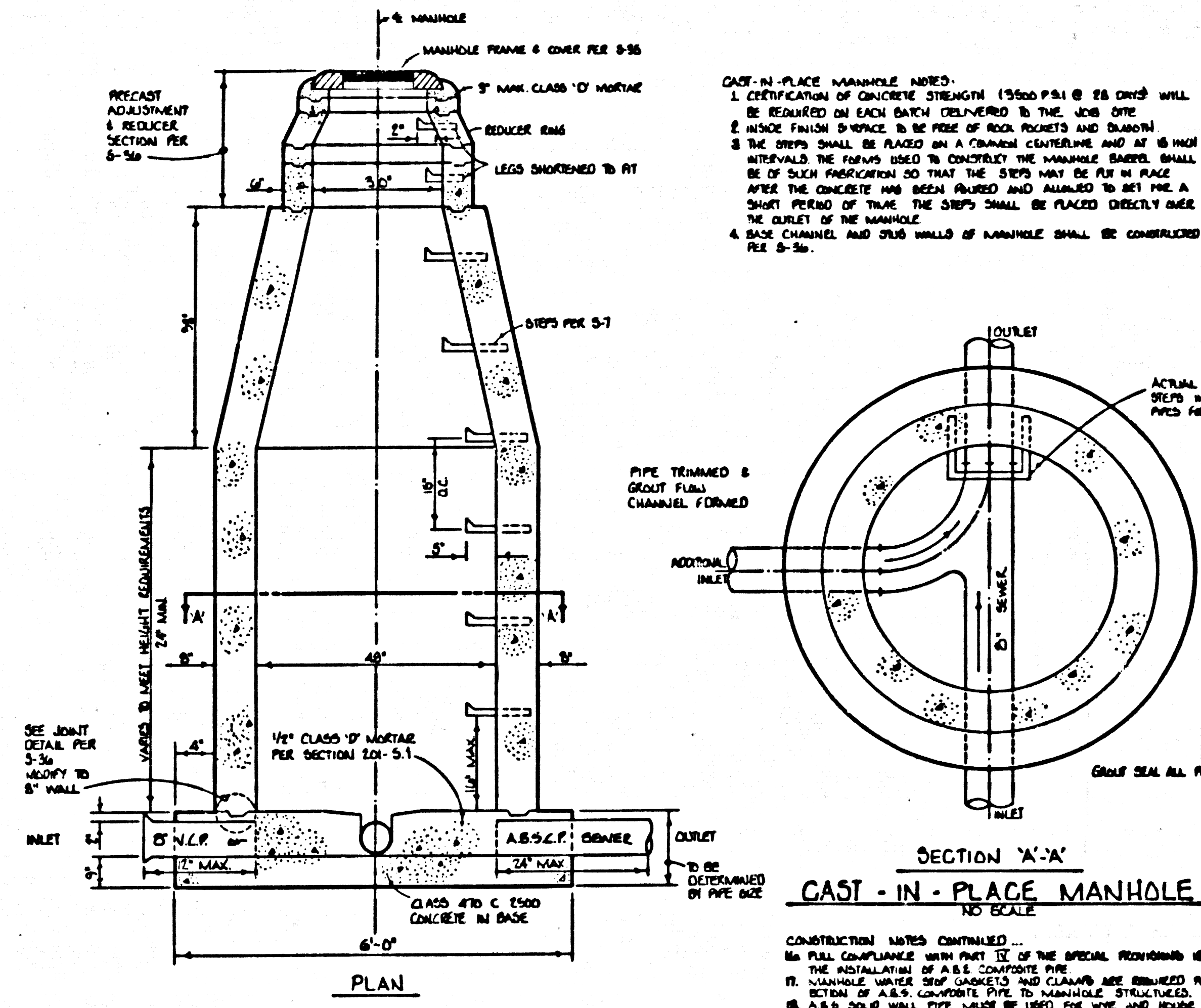
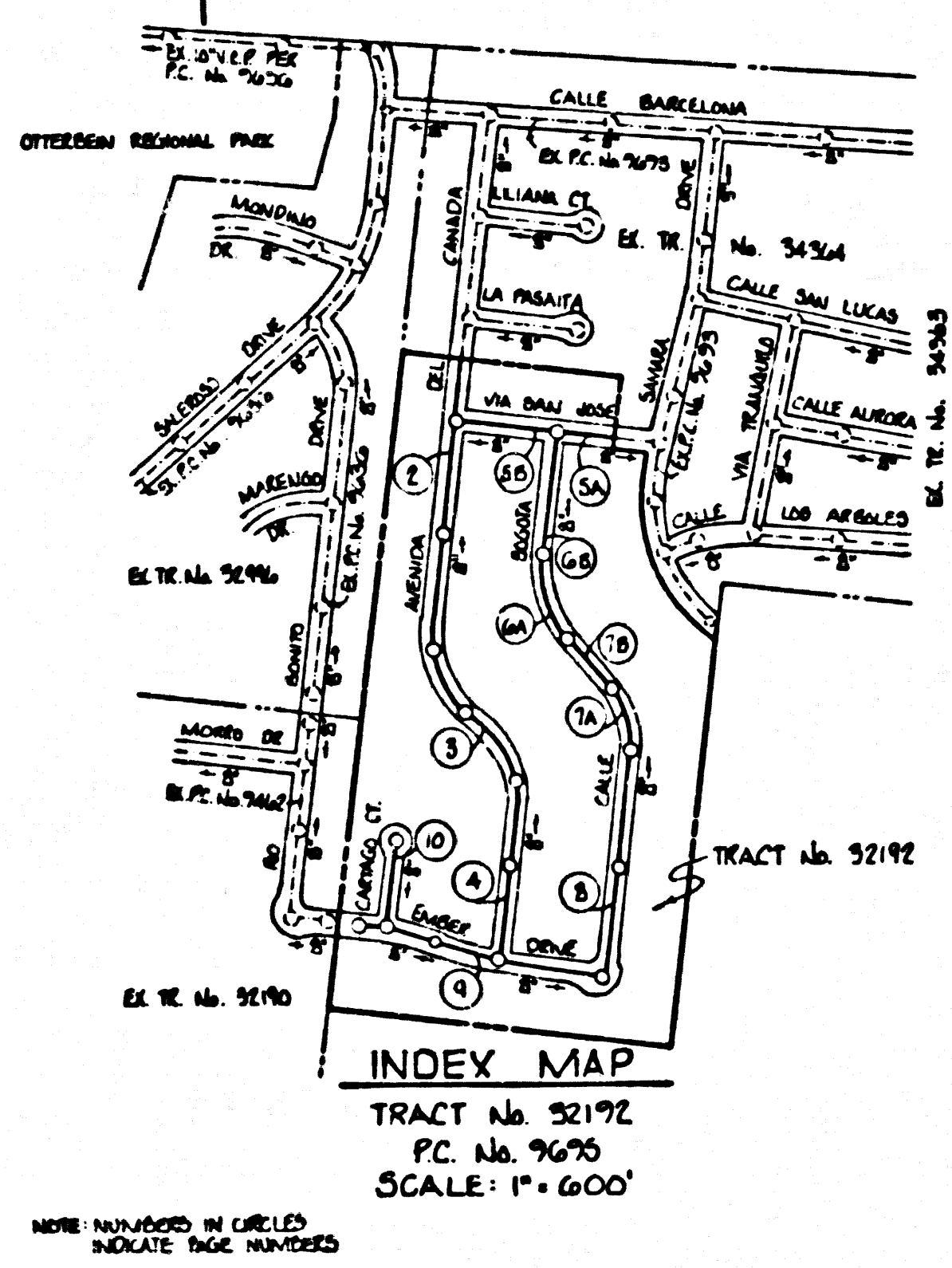


B.M. C.G. 4047 ELEV. 455.913  
 R.D. MAIN IN LUELL G. H. DOLLAN ON E. CALIFORNIA  
 ROAD 254 FT. E/D & INT. ALBATROSS  
 STREET MARK'D (1974)  
 OTTERBEIN QUAD. 19.75 ADJ.

**PRIVATE ENGINEERS NOTICE TO CONTRACTORS**  
 THE EXISTENCE AND APPROXIMATE LOCATION OF UNDERGROUND UTILITIES OR STRUCTURES SHOWN ON THESE PLANS  
 WERE DETERMINED BY A SEARCH OF AVAILABLE PUBLIC RECORDS TO THE BEST OF OUR KNOWLEDGE THERE ARE NO  
 EXISTING UNDERGROUND UTILITIES OR STRUCTURES EXCEPT AS SHOWN ON THESE PLANS.  
 THE CONTRACTOR IS REQUIRED TO TAKE THE PRECAUTIONARY MEASURES TO PROTECT THE UTILITIES AS STRUCTURED SHOWN AND  
 ANY OTHER UTILITIES OR STRUCTURES NOT OF RECORD OR NOT SHOWN ON THESE PLANS.

*Robert R. Flores*  
 ROBERT R. FLORES REG. C.E. NO. 11347



**GENERAL NOTES: DOUBLE SCALE**

1. ELEVATIONS ARE IN FEET ABOVE U.S.C. & G.S. SEA LEVEL DATUM OF 1929.
2. NO IMPROVEMENTS SHALL BE MADE IN THESE PLANS WITHOUT THE APPROVAL OF THE COUNTY ENGINEER.
3. NO REPRESENTATIVE OF THE COUNTY ENGINEER WILL SURVEY OR LAY OUT ANY PORTION OF THE WORK.
4. GRADES 1/4" INCH IN THIS IMPROVEMENT IS TO BE CONSTRUCTED AS SHOWN ON PLANS AND PROFILES GRADE POINTS FOR TOP OF CURB, CENTER LINE OF STREETS, OR CENTER LINE OF ALLEYS ARE SHOWN BY CIRCLES ON PROFILES AT ALL POINTS BETWEEN DESIGNATED POINTS THE GRADE SHALL BE ESTABLISHED SO AS TO CONFORM TO A STRAIGHT LINE BETWEEN SAID DESIGNATED POINTS.
5. THE PRIVATE ENGINEER SHALL FURNISH THE COUNTY ENGINEER WITH GRADE SHEETS AND TRACING FOR ALL HOUSE LATERALS AND 12" OR 18" BRANCHES AND SHALL PROVIDE STAKES FOR THEM AT THEIR PROPER LOCATIONS WITH STATIONING PLAINLY MARKED. ALL HOUSE LATERALS SHALL BE CONSTRUCTED IN A STRAIGHT ALIGNMENT AT RIGHT ANGLES FROM THE MAIN LINE SEWER EXCEPT AS SHOWN ON THE PLANS. HOUSE LATERALS FROM CHIMNEYS SHALL NOT HAVE AN ANGLE OF LESS THAN 45° WITH THE MAIN LINE SEWER AND CHANGES IN ALIGNMENT SHALL BE INDICATED BY WRITING BY THE PRIVATE ENGINEER.
6. THE PRIVATE ENGINEER SHALL FURNISH THE HOUSE LATERAL DEPTH AT THE PROPERTY LINE BELOW THE TOP OF CURB ELEVATION FOR EACH HOUSE LATERAL ON THE GRADE SHEET.
7. BEFORE WORK CAN BE STARTED, THE CONTRACTOR MUST OBTAIN A PERMIT TO EXCAVATE IN COUNTY STREETS FROM THE L.A. COUNTY ROAD DEPT. DISTRICT OFFICE NO. 1 AND PAY A FEE TO THE COUNTY ENGINEER, 220 E. MAIN ST., LOS ANGELES, CALIF. DISTRICT OFFICE TO COVER THE COST OF CONSTRUCTION INSPECTOR AND RECORD PLANS.
8. IF WORK IS TO BE DONE IN A STATE HIGHWAY, A PERMIT MUST BE OBTAINED FROM THE STATE OF CALIFORNIA, DIVISION OF HIGHWAYS, 120 SOUTH SPRING STREET, LOS ANGELES, CALIFORNIA.
9. APPROVAL OF THIS PLAN BY THE COUNTY OF LOS ANGELES DOES NOT CONSTITUTE A REPRESENTATION AS TO THE ACCURACY OF THE LOCATION OF OR THE EXISTENCE OR NON-EXISTENCE OF ANY UNDERGROUND UTILITY PIPE, OR STRUCTURE WITHIN THE LIMITS OF THIS PROJECT. THIS NOTE APPLIES TO ALL PAGES.
10. REFER TO SECTION 7-10.6.1 OF THE STANDARD SPECIFICATIONS, REGARDING SAFETY ORDERS.
11. PRIOR TO THE BEGINNING OF THE WORK, THE CONTRACTOR SHALL NOTIFY THE COUNTY ENGINEER OF THE LOCATION OF ALL EXISTING UTILITIES. THE CONTRACTOR SHALL OBTAIN A PERMIT TO EXCAVATE FROM THE STATE OF CALIFORNIA DEPARTMENT OF INDUSTRIAL RELATIONS, DIVISION OF OCCUPATIONAL SAFETY AND HEALTH, A CERTIFICATE OF NEARBY COMPOSITIONS ADJACENT WITH THE COUNTY ENGINEER.
12. BEFORE BEGINNING EXCAVATION OR CONSTRUCTION ON A COUNTY STREET, THE CONTRACTOR SHALL NOTIFY THE COUNTY ENGINEER OF THE LOCATION OF ALL EXISTING UTILITIES. THE CONTRACTOR SHALL OBTAIN A PERMIT TO EXCAVATE FROM THE STATE OF CALIFORNIA DEPARTMENT OF INDUSTRIAL RELATIONS, DIVISION OF OCCUPATIONAL SAFETY AND HEALTH, A CERTIFICATE OF NEARBY COMPOSITIONS ADJACENT WITH THE COUNTY ENGINEER.

**CONSTRUCTION NOTES:**

1. WORK SHALL BE CONSTRUCTED ACCORDING TO THE STANDARD SPECIFICATIONS FOR PUBLIC WORKS CONSTRUCTION (1975 EDITION) AND COUNTY ENGINEER SPECIAL PROVISIONS FOR THE CONSTRUCTION OF SANITARY SEWER SYSTEMS.
2. THE CONTRACTOR SHALL NOTIFY THE SANITATION DISTRICT ENGINEER PRIOR TO THE START OF WORK AT LEAST TWENTY-FOUR HOURS BEFORE STARTING ANY WORK UNDER THIS CONTRACT.
3. HOUSE LATERALS TO BE CONSTRUCTED WITH INVERTS AT PROPERTY LINE & FEET BELOW CURB GRADE EXCEPT AS NOTED.
4. WYS OF THE BRANCHES MAY BE USED FOR CONNECTIONS TO MAINLINE SEWER EXCEPT AS NOTED, UNLESS 18" LINED.
5. HOUSE LATERALS SHALL BE WITHIN THREE MANHOLES PER 50' OF PRECAST CONCRETE MANHOLES PER 5' IN DEPTH AS NOTED.
6. PROVIDE STAKES ON THE PROPERTY LINE OR PROPERTY LINES PRODUCE AT RIGHT ANGLES TO THE SEWER LINE AT THE CENTER LINE OF EACH MANHOLE.
7. MANHOLE TOPS IN UNIMPROVED AREAS TO BE IN INCHES ABOVE FINISHED GRADE.
8. WHENEVER CLAY PIPE JOINTS SHALL BE TYPE "B", "C", OR "D" PER STANDARD SPECIFICATIONS SECTION 7-10.2.
9. IF A POWER POLE IS WITHIN THREE FEET OF THE SEWER, THE SEWER SHALL BE ENCASED PER 5-23, CASE E, TWO FEET ON EACH SIDE FROM THE POINT OF INTERFERENCE.
10. IF DURING THE COURSE OF CONSTRUCTION IT IS DETERMINED THAT THERE IS LESS THAN FOUR FEET OF COVER OVER THE TOP OF A MAIN LINE OR HOUSE LATERAL EXCEPT WHERE INDICATED ON THE PLANS, THE PIPE SHALL BE ENCASED PER 5-23, CASE E, UNLESS OTHERWISE APPROVED BY THE COUNTY ENGINEER.
11. ALL JOINTS BETWEEN CAST IRON PIPE AND VITRIFIED CLAY PIPE SHALL BE MADE WITH A RUBBER SLEEVE JOINT, TYPE "C" OR "D". WITH RUBBER SLEEVE JOINTS, THE CONTRACTOR SHALL NOTIFY THE SANITATION DISTRICT ENGINEER PRIOR TO THE START OF WORK AT LEAST TWENTY-FOUR HOURS BEFORE STARTING ANY WORK UNDER THIS CONTRACT.
12. REINFORCE ALL TRENCHES WITHIN PAVED AREAS TO MEET L.A. COUNTY ROAD DEPT. REQUIREMENTS FOR CALIFORNIA STATE HIGHWAY IMPROVEMENTS IN ACCORDANCE WITH PERMITS.
13. FULL COMPLIANCE WITH SECTION 206.1.1.1 OF THE SPECIAL PROVISIONS WILL BE REQUIRED FOR BACKFILL IN STREETS. CERTIFICATION OF BACKFILL COMPLETION AND BANK EQUIVALENT BY A QUALIFIED, REGISTERED TESTING LABORATORY SHALL BE PROVIDED BY THE PERMITTEE PRIOR TO THE ISSUANCE OF A CERTIFICATE OF PARTIAL ACCEPTANCE.
14. SPECIAL MATERIALS - ESTIMATED HEADS:  
 A. SPECIAL HEADS AND REPLACEMENT HEADS SHALL BE PROVIDED TO REPLACE THE HEADS OF FINISHED GRADES AND SLIPPED GRADES.  
 B. SPECIAL HEADS AND REPLACEMENT HEADS SHALL BE PROVIDED TO REPLACE THE HEADS OF FINISHED GRADES AND SLIPPED GRADES.  
 C. ALL SPECIAL HEADS AND REPLACEMENT HEADS SHALL BE PROVIDED TO REPLACE THE HEADS OF FINISHED GRADES AND SLIPPED GRADES.  
 D. SPECIAL HEADS AND REPLACEMENT HEADS SHALL BE PROVIDED TO REPLACE THE HEADS OF FINISHED GRADES AND SLIPPED GRADES.  
 E. SPECIAL HEADS AND REPLACEMENT HEADS SHALL BE PROVIDED TO REPLACE THE HEADS OF FINISHED GRADES AND SLIPPED GRADES.  
 F. SPECIAL HEADS AND REPLACEMENT HEADS SHALL BE PROVIDED TO REPLACE THE HEADS OF FINISHED GRADES AND SLIPPED GRADES.  
 G. SPECIAL HEADS AND REPLACEMENT HEADS SHALL BE PROVIDED TO REPLACE THE HEADS OF FINISHED GRADES AND SLIPPED GRADES.  
 H. SPECIAL HEADS AND REPLACEMENT HEADS SHALL BE PROVIDED TO REPLACE THE HEADS OF FINISHED GRADES AND SLIPPED GRADES.  
 I. SPECIAL HEADS AND REPLACEMENT HEADS SHALL BE PROVIDED TO REPLACE THE HEADS OF FINISHED GRADES AND SLIPPED GRADES.  
 J. SPECIAL HEADS AND REPLACEMENT HEADS SHALL BE PROVIDED TO REPLACE THE HEADS OF FINISHED GRADES AND SLIPPED GRADES.  
 K. SPECIAL HEADS AND REPLACEMENT HEADS SHALL BE PROVIDED TO REPLACE THE HEADS OF FINISHED GRADES AND SLIPPED GRADES.  
 L. SPECIAL HEADS AND REPLACEMENT HEADS SHALL BE PROVIDED TO REPLACE THE HEADS OF FINISHED GRADES AND SLIPPED GRADES.  
 M. SPECIAL HEADS AND REPLACEMENT HEADS SHALL BE PROVIDED TO REPLACE THE HEADS OF FINISHED GRADES AND SLIPPED GRADES.  
 N. SPECIAL HEADS AND REPLACEMENT HEADS SHALL BE PROVIDED TO REPLACE THE HEADS OF FINISHED GRADES AND SLIPPED GRADES.  
 O. SPECIAL HEADS AND REPLACEMENT HEADS SHALL BE PROVIDED TO REPLACE THE HEADS OF FINISHED GRADES AND SLIPPED GRADES.  
 P. SPECIAL HEADS AND REPLACEMENT HEADS SHALL BE PROVIDED TO REPLACE THE HEADS OF FINISHED GRADES AND SLIPPED GRADES.  
 Q. SPECIAL HEADS AND REPLACEMENT HEADS SHALL BE PROVIDED TO REPLACE THE HEADS OF FINISHED GRADES AND SLIPPED GRADES.  
 R. SPECIAL HEADS AND REPLACEMENT HEADS SHALL BE PROVIDED TO REPLACE THE HEADS OF FINISHED GRADES AND SLIPPED GRADES.  
 S. SPECIAL HEADS AND REPLACEMENT HEADS SHALL BE PROVIDED TO REPLACE THE HEADS OF FINISHED GRADES AND SLIPPED GRADES.  
 T. SPECIAL HEADS AND REPLACEMENT HEADS SHALL BE PROVIDED TO REPLACE THE HEADS OF FINISHED GRADES AND SLIPPED GRADES.  
 U. SPECIAL HEADS AND REPLACEMENT HEADS SHALL BE PROVIDED TO REPLACE THE HEADS OF FINISHED GRADES AND SLIPPED GRADES.  
 V. SPECIAL HEADS AND REPLACEMENT HEADS SHALL BE PROVIDED TO REPLACE THE HEADS OF FINISHED GRADES AND SLIPPED GRADES.  
 W. SPECIAL HEADS AND REPLACEMENT HEADS SHALL BE PROVIDED TO REPLACE THE HEADS OF FINISHED GRADES AND SLIPPED GRADES.  
 X. SPECIAL HEADS AND REPLACEMENT HEADS SHALL BE PROVIDED TO REPLACE THE HEADS OF FINISHED GRADES AND SLIPPED GRADES.  
 Y. SPECIAL HEADS AND REPLACEMENT HEADS SHALL BE PROVIDED TO REPLACE THE HEADS OF FINISHED GRADES AND SLIPPED GRADES.  
 Z. SPECIAL HEADS AND REPLACEMENT HEADS SHALL BE PROVIDED TO REPLACE THE HEADS OF FINISHED GRADES AND SLIPPED GRADES.

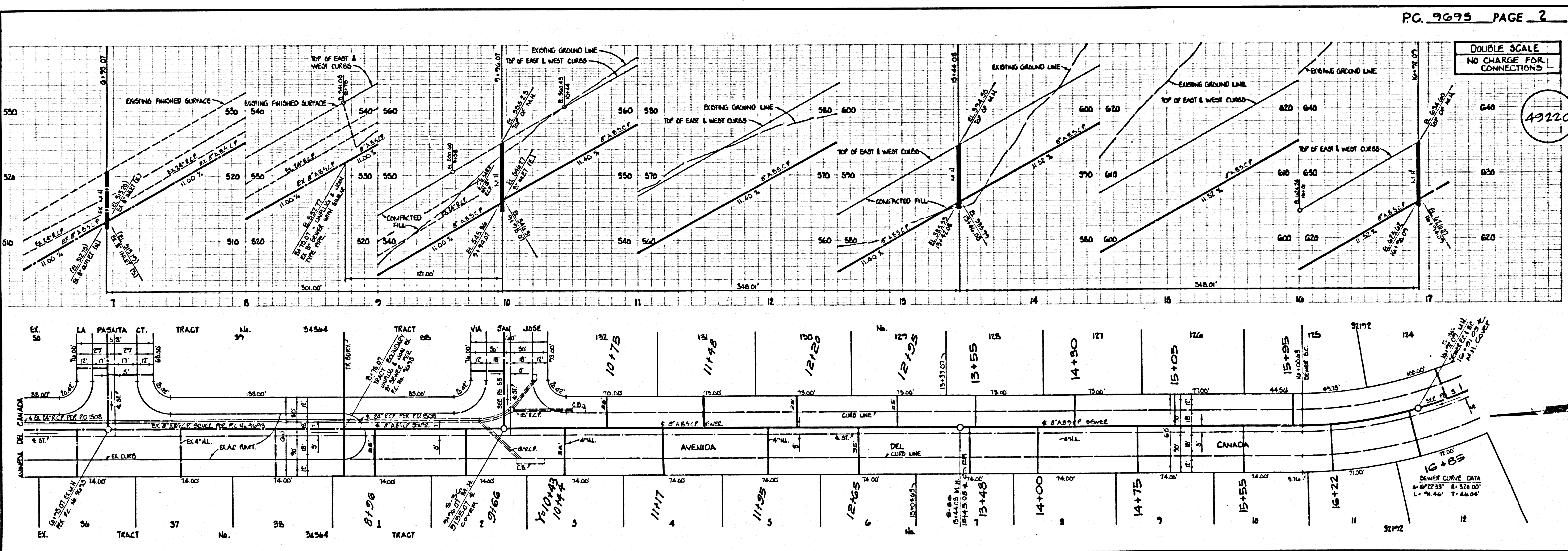
PROFILE, ALIGNMENT AND GRADE OF  
**SANITARY SEWERS** PAGE 1  
 TO BE CONSTRUCTED IN  
 TRACT No. 32192  
 PRIVATE CONTRACT NO. 9695

W.S. 38-64  
 5 SHEETS, 10 PAGES  
 SCALE: VERT. 1" = 4'  
 HORIZ. 1" = 40'  
 MARCH, 1979  
 PREPARED IN THE OFFICES OF  
 KEMMERER ENGINEERING CO., INC.  
 6105 S. PANITER AVE., WHITTIER, CALIF. 92606 (213) 678-0174  
 BY: *Robert R. Flores*  
 REG. C.E. No. 11347

THE FOLLOWING LATEST REVISED STANDARD PLANS ON FILE IN THE OFFICE OF THE COUNTY ENGINEER SHALL APPLY IN THE CONSTRUCTION OF THIS PROJECT.

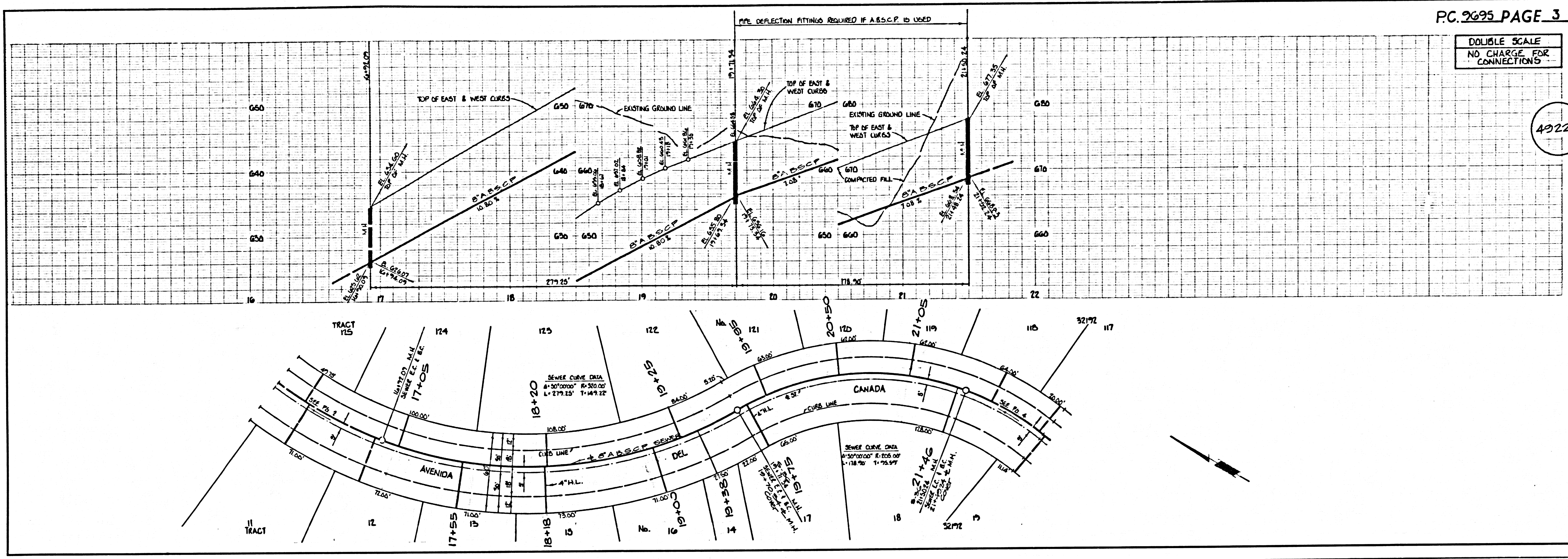
1. STANDARD MANHOLE TOPS	5-1
2. STANDARD MANHOLE SETS	5-2
3. STANDARD MANHOLE SETS	5-3
4. STANDARD MANHOLE SETS	5-4
5. STANDARD MANHOLE SETS	5-5
6. STANDARD MANHOLE SETS	5-6
7. STANDARD MANHOLE SETS	5-7
8. STANDARD MANHOLE SETS	5-8
9. STANDARD MANHOLE SETS	5-9
10. STANDARD MANHOLE SETS	5-10
11. STANDARD MANHOLE SETS	5-11
12. STANDARD MANHOLE SETS	5-12
13. STANDARD MANHOLE SETS	5-13
14. STANDARD MANHOLE SETS	5-14
15. STANDARD MANHOLE SETS	5-15
16. STANDARD MANHOLE SETS	5-16
17. STANDARD MANHOLE SETS	5-17
18. STANDARD MANHOLE SETS	5-18
19. STANDARD MANHOLE SETS	5-19
20. STANDARD MANHOLE SETS	5-20
21. STANDARD MANHOLE SETS	5-21
22. STANDARD MANHOLE SETS	5-22
23. STANDARD MANHOLE SETS	5-23
24. STANDARD MANHOLE SETS	5-24
25. STANDARD MANHOLE SETS	5-25
26. STANDARD MANHOLE SETS	5-26
27. STANDARD MANHOLE SETS	5-27
28. STANDARD MANHOLE SETS	5-28
29. STANDARD MANHOLE SETS	5-29
30. STANDARD MANHOLE SETS	5-30
31. STANDARD MANHOLE SETS	5-31
32. STANDARD MANHOLE SETS	5-32
33. STANDARD MANHOLE SETS	5-33
34. STANDARD MANHOLE SETS	5-34
35. STANDARD MANHOLE SETS	5-35
36. STANDARD MANHOLE SETS	5-36
37. STANDARD MANHOLE SETS	5-37
38. STANDARD MANHOLE SETS	5-38
39. STANDARD MANHOLE SETS	5-39
40. STANDARD MANHOLE SETS	5-40
41. STANDARD MANHOLE SETS	5-41
42. STANDARD MANHOLE SETS	5-42
43. STANDARD MANHOLE SETS	5-43
44. STANDARD MANHOLE SETS	5-44
45. STANDARD MANHOLE SETS	5-45
46. STANDARD MANHOLE SETS	5-46
47. STANDARD MANHOLE SETS	5-47
48. STANDARD MANHOLE SETS	5-48
49. STANDARD MANHOLE SETS	5-49
50. STANDARD MANHOLE SETS	5-50
51. STANDARD MANHOLE SETS	5-51
52. STANDARD MANHOLE SETS	5-52
53. STANDARD MANHOLE SETS	5-53
54. STANDARD MANHOLE SETS	5-54
55. STANDARD MANHOLE SETS	5-55
56. STANDARD MANHOLE SETS	5-56
57. STANDARD MANHOLE SETS	5-57
58. STANDARD MANHOLE SETS	5-58
59. STANDARD MANHOLE SETS	5-59
60. STANDARD MANHOLE SETS	5-60
61. STANDARD MANHOLE SETS	5-61
62. STANDARD MANHOLE SETS	5-62
63. STANDARD MANHOLE SETS	5-63
64. STANDARD MANHOLE SETS	5-64
65. STANDARD MANHOLE SETS	5-65
66. STANDARD MANHOLE SETS	5-66
67. STANDARD MANHOLE SETS	5-67
68. STANDARD MANHOLE SETS	5-68
69. STANDARD MANHOLE SETS	5-69
70. STANDARD MANHOLE SETS	5-70
71. STANDARD MANHOLE SETS	5-71
72. STANDARD MANHOLE SETS	5-72
73. STANDARD MANHOLE SETS	5-73
74. STANDARD MANHOLE SETS	5-74
75. STANDARD MANHOLE SETS	5-75
76. STANDARD MANHOLE SETS	5-76
77. STANDARD MANHOLE SETS	5-77
78. STANDARD MANHOLE SETS	5-78
79. STANDARD MANHOLE SETS	5-79
80. STANDARD MANHOLE SETS	5-80
81. STANDARD MANHOLE SETS	5-81
82. STANDARD MANHOLE SETS	5-82
83. STANDARD MANHOLE SETS	5-83
84. STANDARD MANHOLE SETS	5-84
85. STANDARD MANHOLE SETS	5-85
86. STANDARD MANHOLE SETS	5-86
87. STANDARD MANHOLE SETS	5-87
88. STANDARD MANHOLE SETS	5-88
89. STANDARD MANHOLE SETS	5-89
90. STANDARD MANHOLE SETS	5-90
91. STANDARD MANHOLE SETS	5-91
92. STANDARD MANHOLE SETS	5-92
93. STANDARD MANHOLE SETS	5-93
94. STANDARD MANHOLE SETS	5-94
95. STANDARD MANHOLE SETS	5-95
96. STANDARD MANHOLE SETS	5-96
97. STANDARD MANHOLE SETS	5-97
98. STANDARD MANHOLE SETS	5-98
99. STANDARD MANHOLE SETS	5-99
100. STANDARD MANHOLE SETS	5-100

COUNTY OF LOS ANGELES, CALIFORNIA  
 STEPHEN L. KOENIG, COUNTY ENGINEER  
 WALTER E. GARRISON, CHIEF ENGINEER  
 APPROVED: *Janet M. Miller 12/27/79*  
 SANITATION DISTRICT ENGINEER  
 CHECKED: *Ralph D. Dier 12/27/79*  
 REG. C.E. NO. 16883  
 LA PUENTE BLDG. DIST. 220



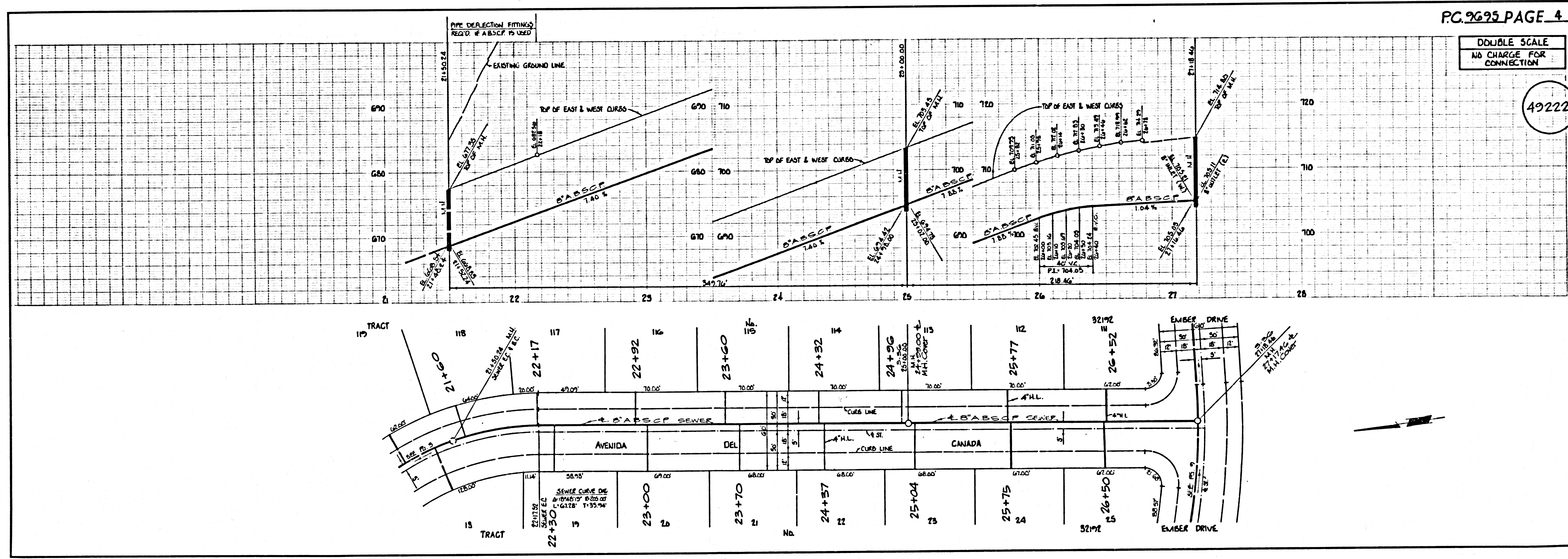
DOUBLE SCALE  
NO CHARGE FOR  
CONNECTIONS

49221

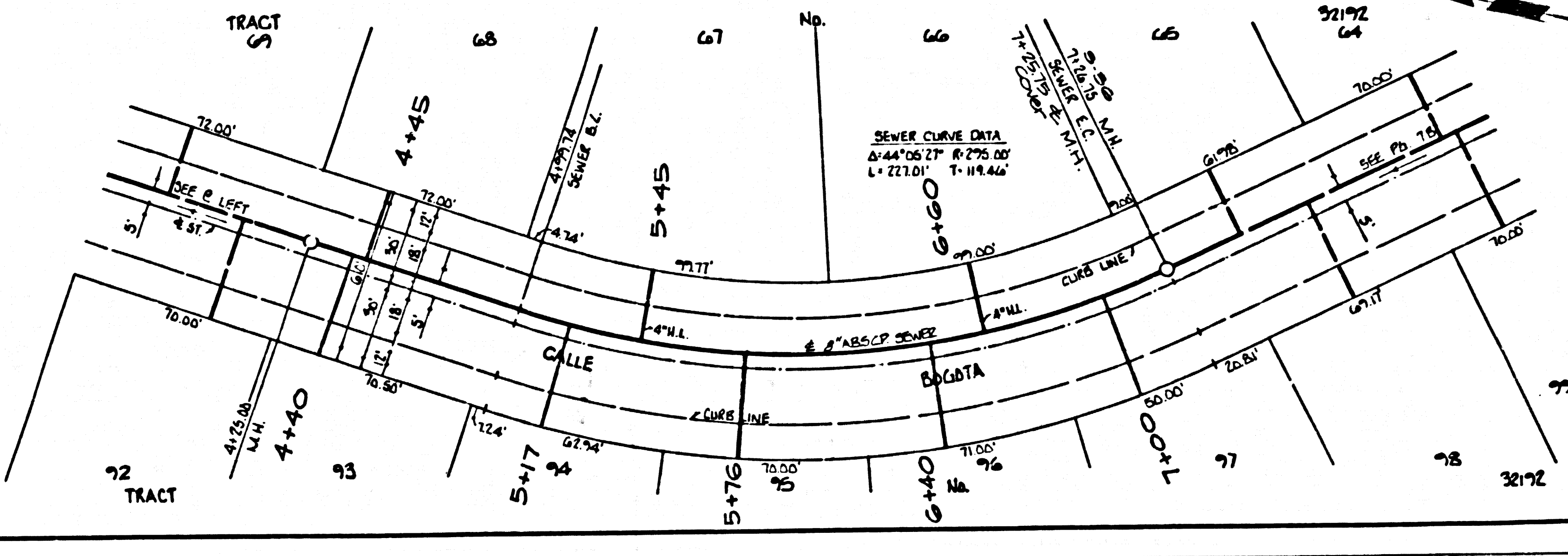
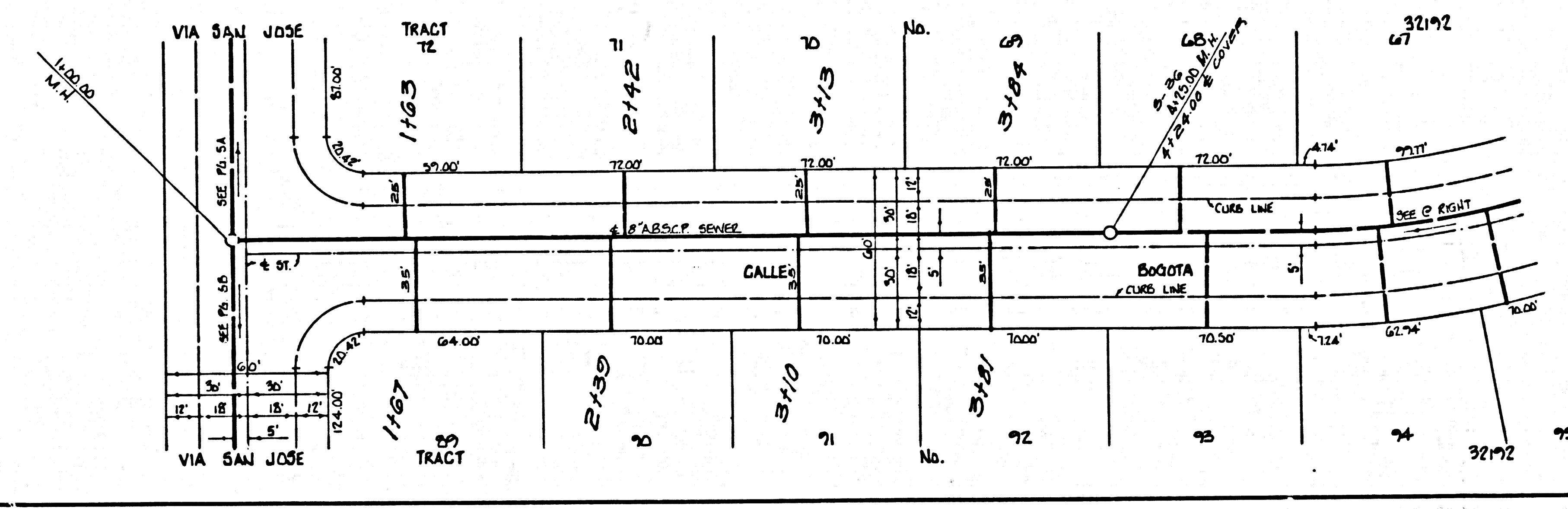
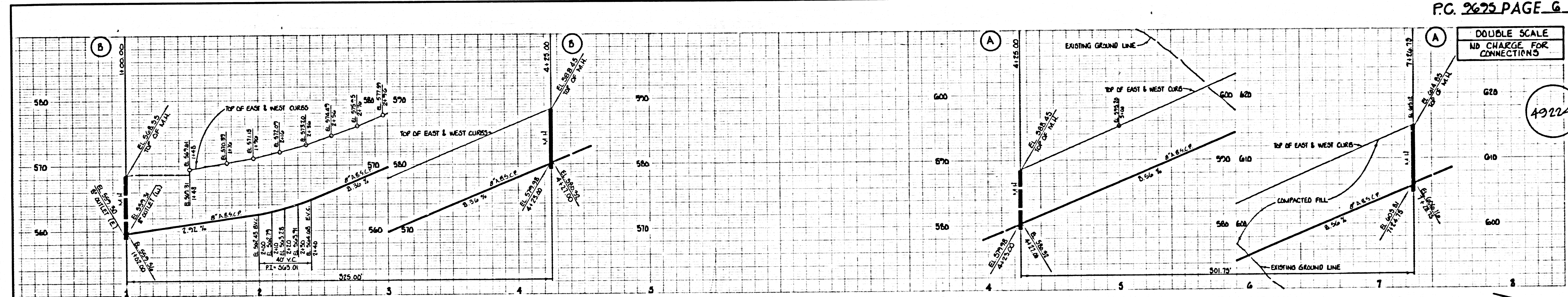
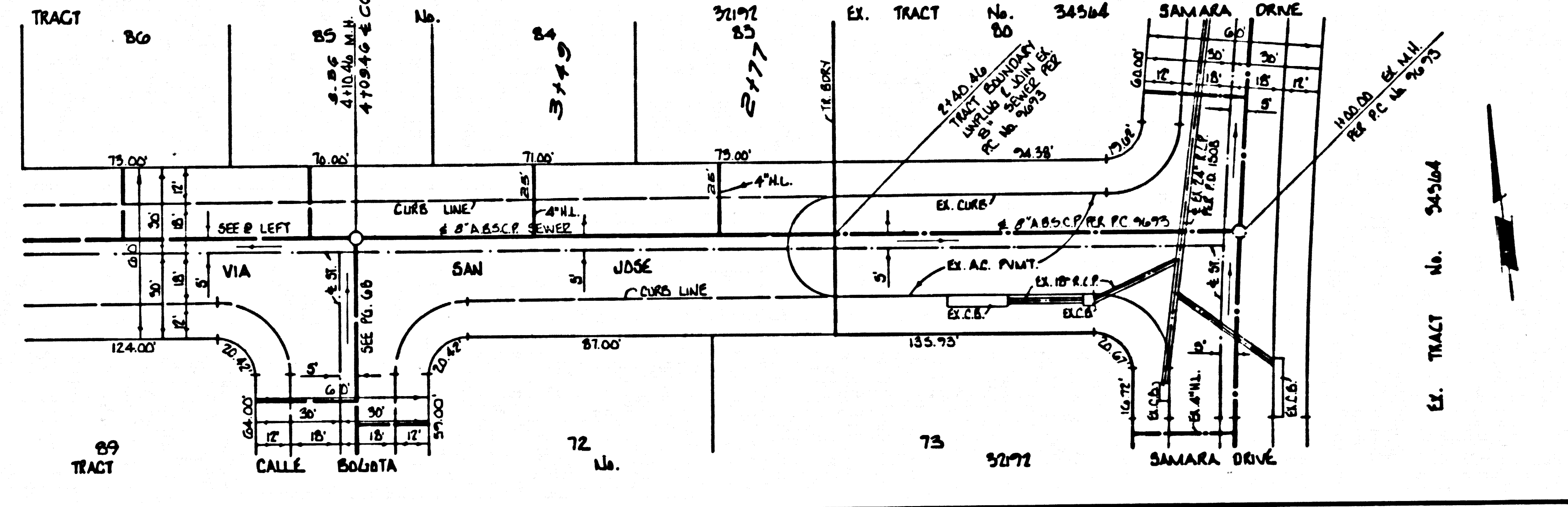
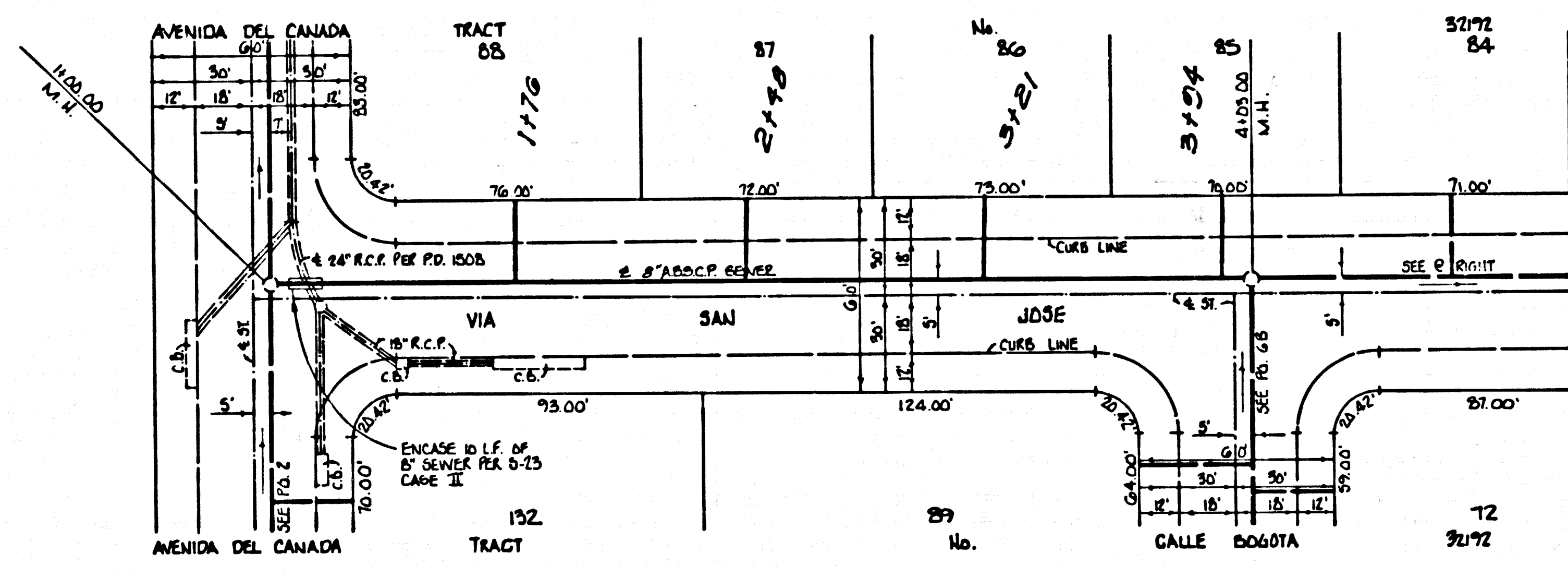
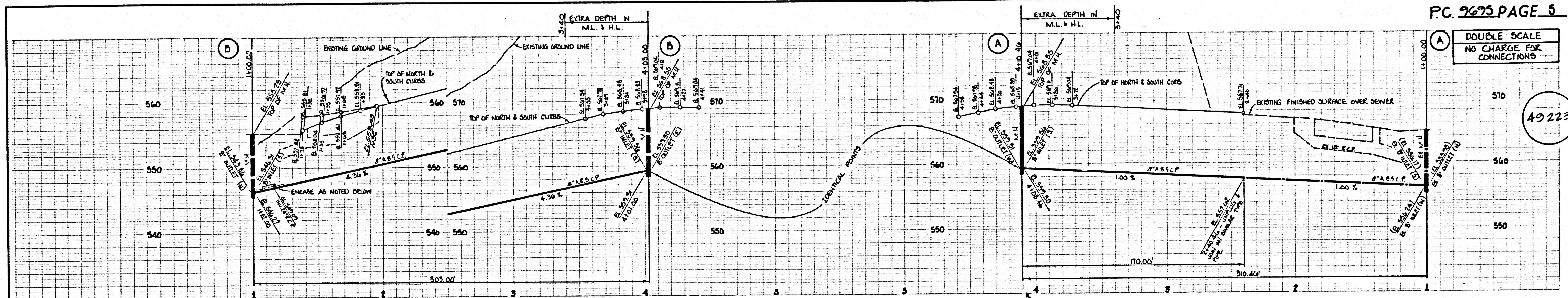


DOUBLE SCALE  
NO CHARGE FOR  
CONNECTIONS

49222



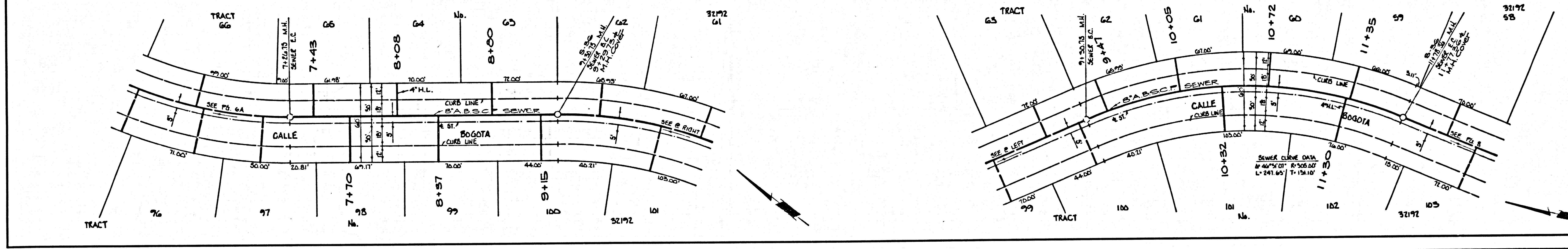
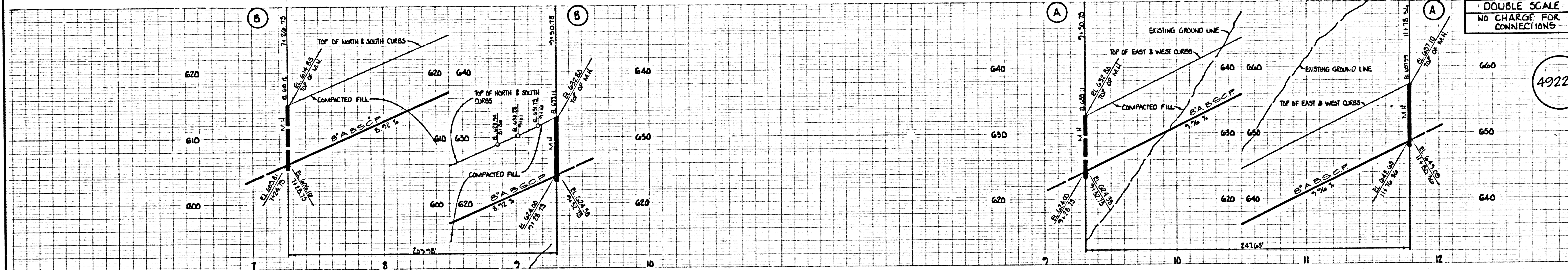
CREP 09  
SEISE ON 10A1



2020 BC 2020  
SEISS ON TRACT

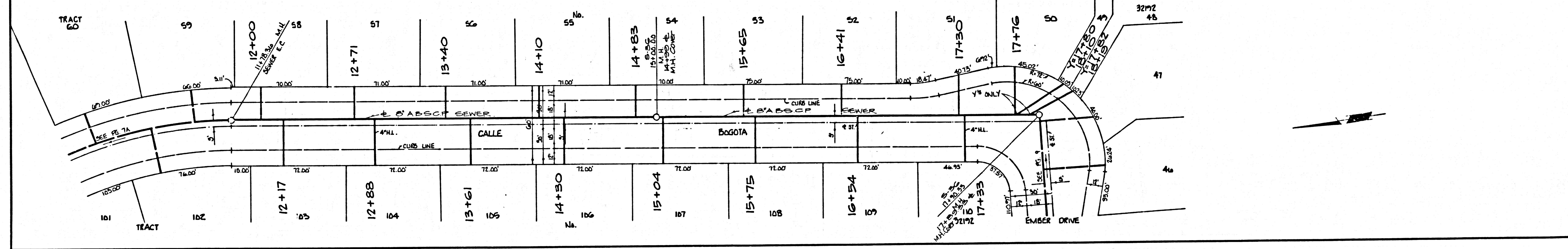
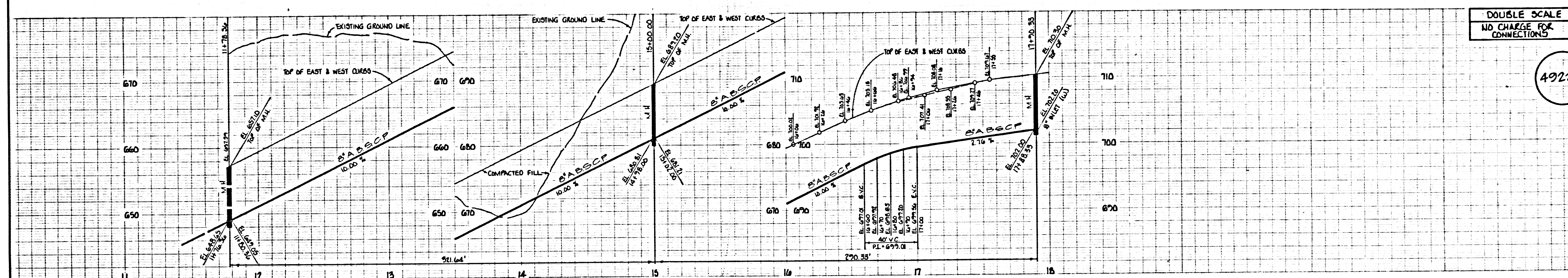
DOUBLE SCALE  
NO CHARGE FOR  
CONNECTIONS

49225



DOUBLE SCALE  
NO CHARGE FOR  
CONNECTIONS

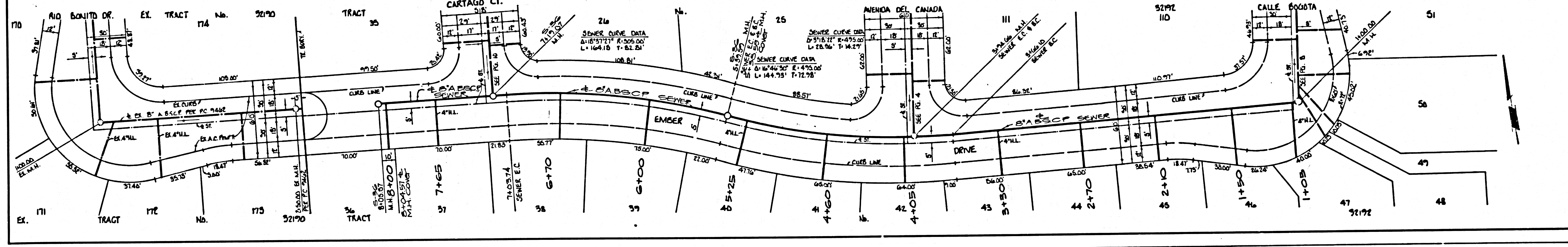
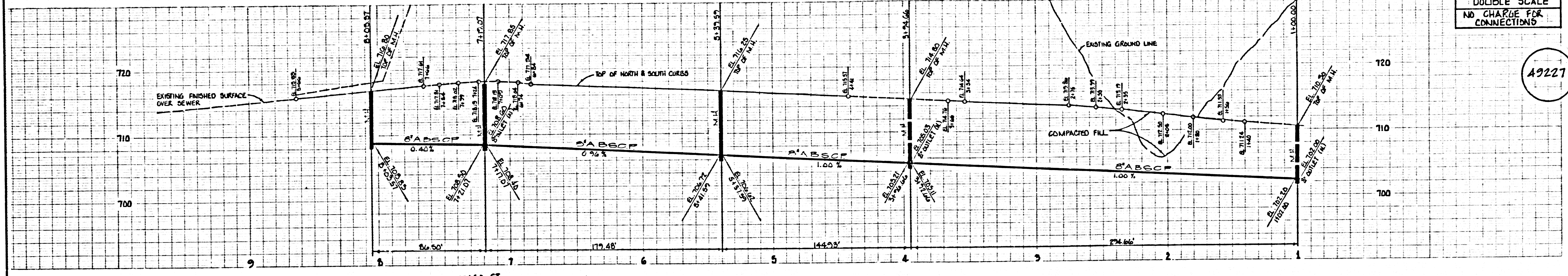
49226



2675 29  
SEISE ON TRACT

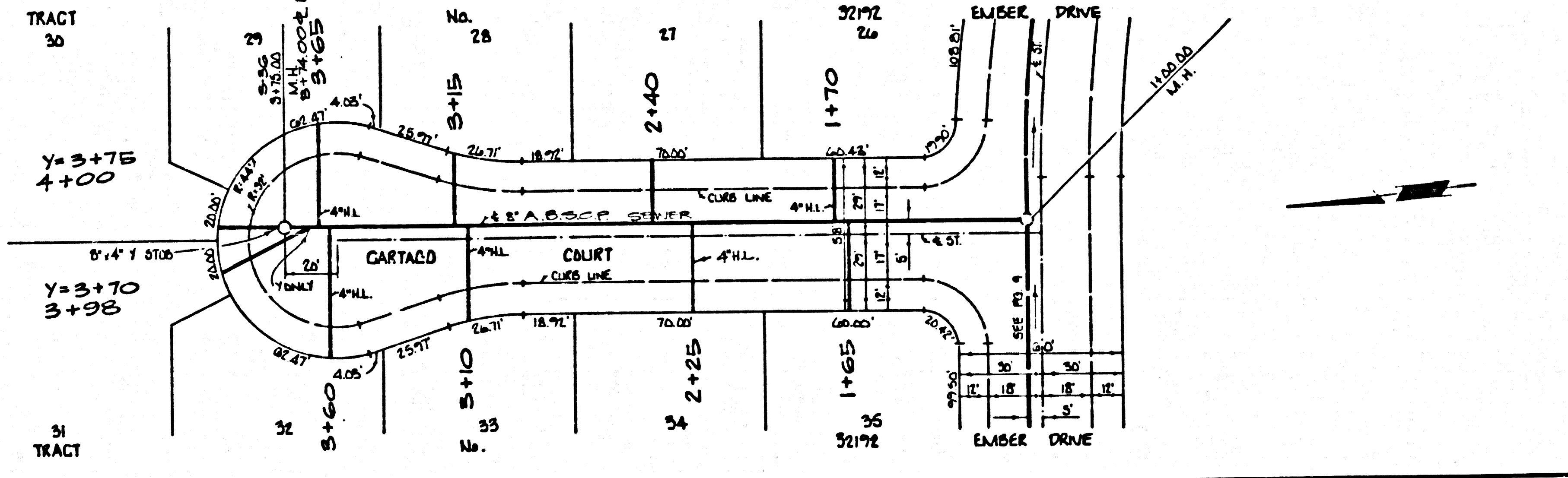
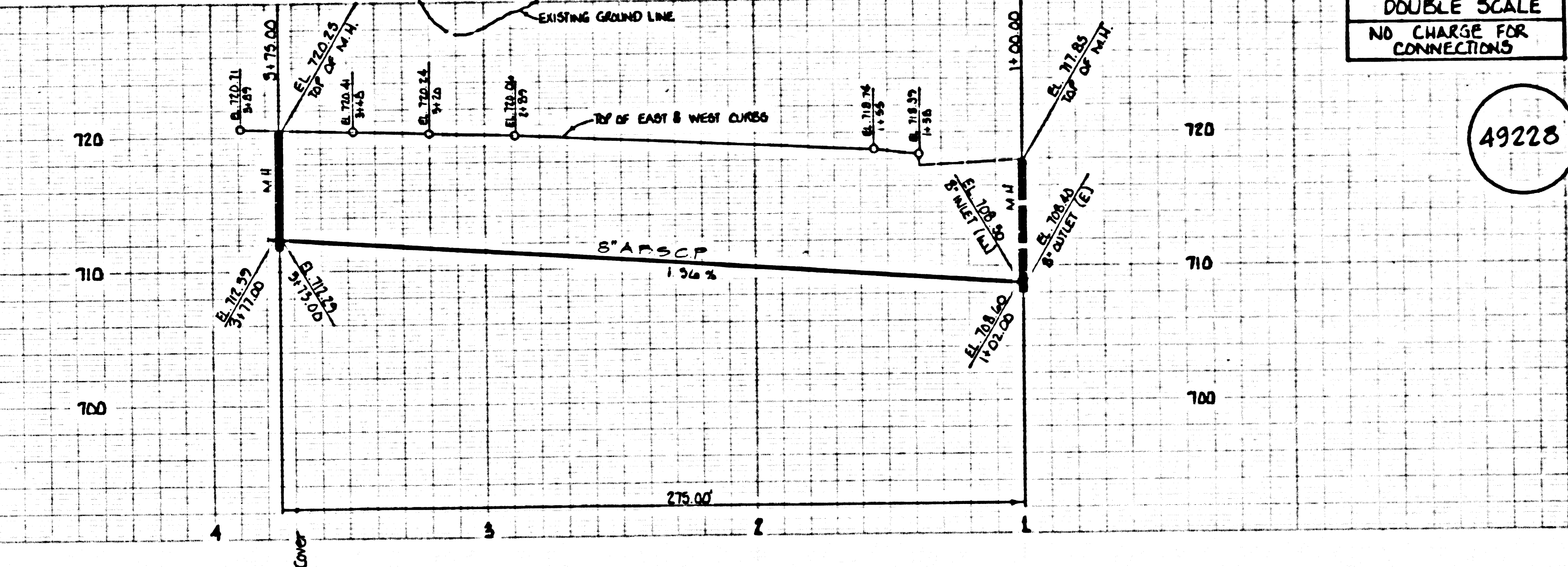
DOUBLE SCALE  
NO CHARGE FOR  
CONNECTIONS

49227



DOUBLE SCALE  
NO CHARGE FOR  
CONNECTIONS

49228



PC 7675